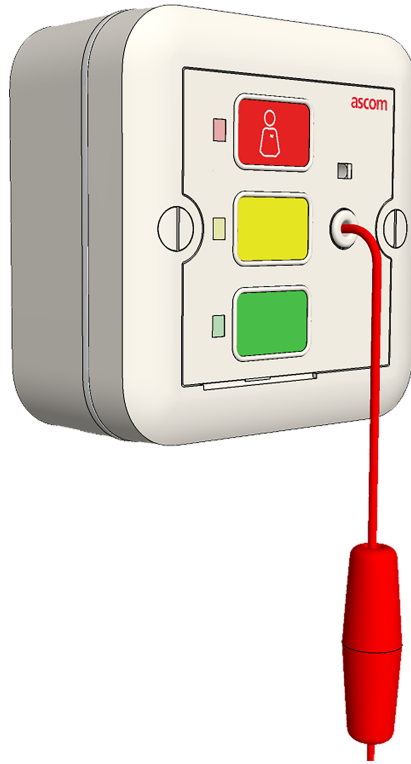


## INSTALLATION GUIDE



## Wireless Pull Cord Module (NUWPC3–Hx)

## 1 Introduction

### 1.1 Symbols



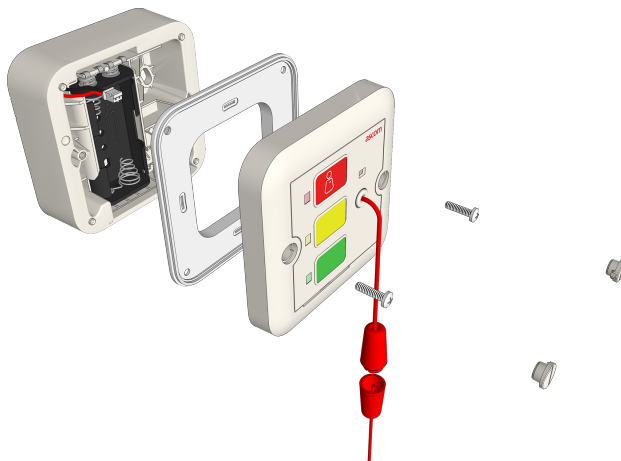
Read the manual for more information



**Caution:** Use extreme caution and follow instructions carefully.

### 1.2 Description

The Wireless Pull Cord Module NUWPC3 communicates with the controller (NIRC3/NIRC4) or a repeater (NUREP). The NUWPC3 pull cord is battery powered with two AA Alkaline batteries. The batteries can be easily replaced using the battery pack via the battery door in the spacer.



### 1.3 Installation

The NUWPC3 has an IP44 ingress protection. The areas in which NUWPC3s are to be installed must be clean, dry (during installation), and weatherproof. The walls on which devices are to be installed should be finished (painted, wall papered, tiled, etc.) before the devices are installed. It is important to mount the NUWPC3 away from any direct water ingress.

### 1.4 Important Safety Information

The Wireless Pull Cord Module (NUWPC3) Installation Instructions contain important instructions for use during installation and maintenance of the NUWPC3. To ensure a safe working environment during the installation and operation of the NUWPC3, the following safety symbols appear throughout this document to indicate dangerous conditions and important safety instructions.



**Caution:** Use extreme caution and follow instructions carefully.

## **1.5 Regulatory Compliance US/CAN**

For further information about the teleCARE system products see “System Description” TD93025, where also information regarding Regulatory compliance can be found.

## 2 Mounting

The base of the NUWPC3 mounts directly onto flat wall or ceiling surfaces.



**Caution:** To prevent a fire hazard because of dust buildup inside the NUWPC3, regular inspection and/or cleaning of the NUWPC3 is required.



**Caution:** Take proper measures to avoid spreading dust and other particles when applying maintenance to an NUWPC3 that is mounted inside a clinical area.

### 2.1 Mounting the Spacer on the wall or ceiling

When mounting the NUWPC3 on a wall or ceiling without a back box, mount the base directly to a flat wall surface using two screws suitable for the wall type.

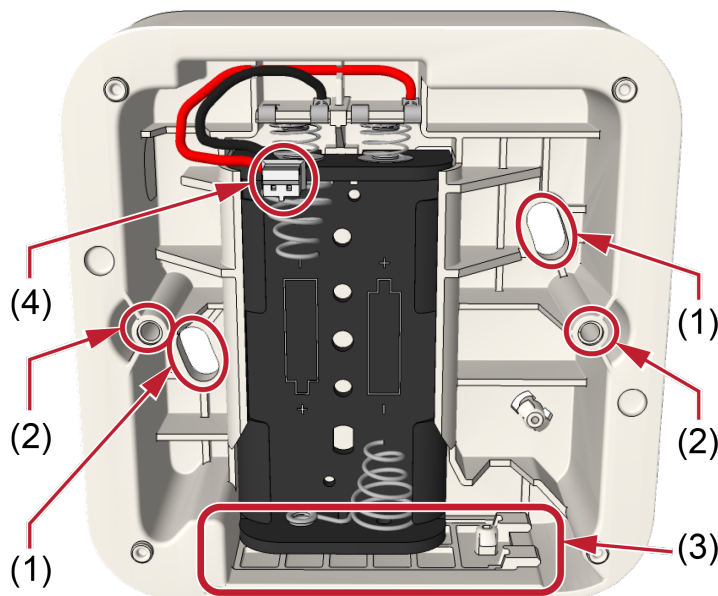
When choosing a wall location for an NUWPC3, consider the ingress protection.



The NUWPC3 shall only be mounted with the included base.

Do not distort or twist the base when mounting it to a wall. If the base is distorted, the NUWPC3–Hx module will not fit properly and may not be protected against water ingress.

Figure 1. NUWPC3 Base Orientation and mounting

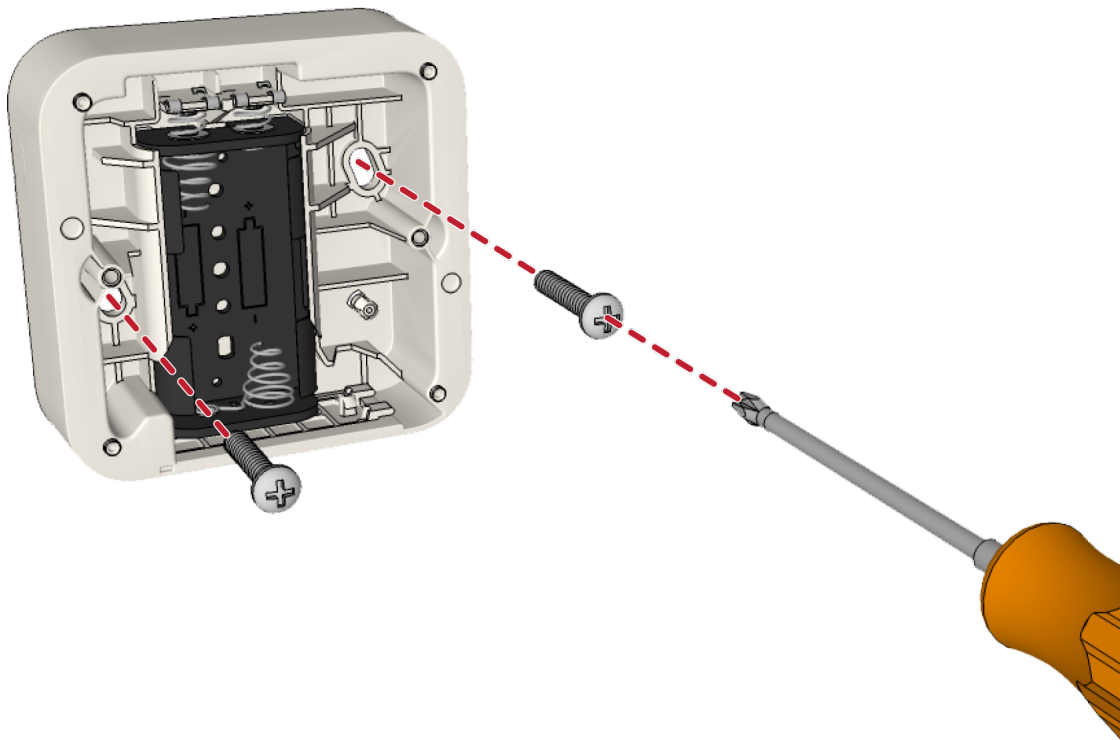


#### Legend

1. Screw holes for wall or ceiling mounting
2. Screw holes for module
3. Battery door
4. Battery connector

## To mount the NUWPC3 base on a wall

1. Place the base against a flat wall and orient it so that the battery door is pointing down and that the base is level. Or place the base against the ceiling. Use a leveling device to check, if necessary.
2. Make sure that there is room to remove the battery pack from the base before mounting the base. (See [Figure 1. NUWPC3 Base Orientation and mounting, page 3](#), item 2.)
3. Using the base as a template, mark the two slotted holes (See [Figure 1. NUWPC3 Base Orientation and mounting, page 3](#), item 1.) for the screws located in the base.
4. Remove the base spacer and drill holes for the screws that will be used, such as wood, concrete, or drywall screws, or screws with anchors.
5. Place the base over the holes, insert the screws, and then tighten.

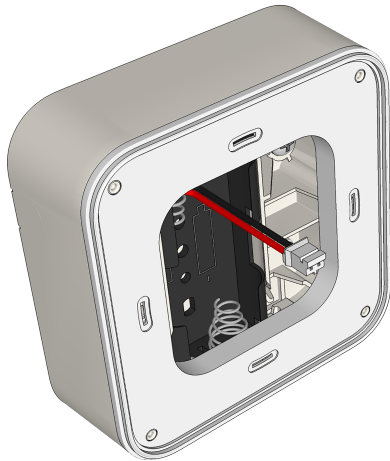


**Caution:** The NUWPC3 must be mounted in a way that the module is firmly attached to the background.

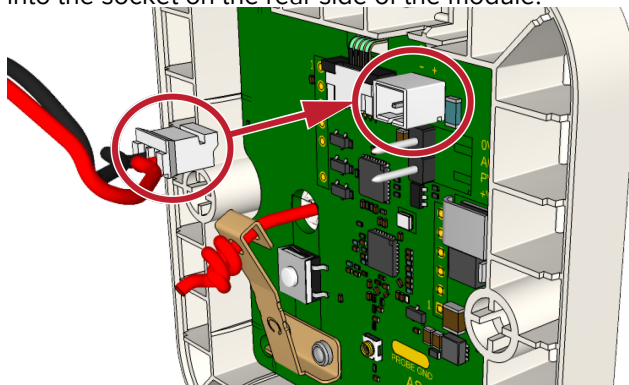
The base has a gasket to prevent water ingress from the rear. In case of uneven background, use an applicable caulk to caulk around the base and the background. Make sure that the battery door is not blocked by the caulk.

## 2.2 Mounting the module on the spacer

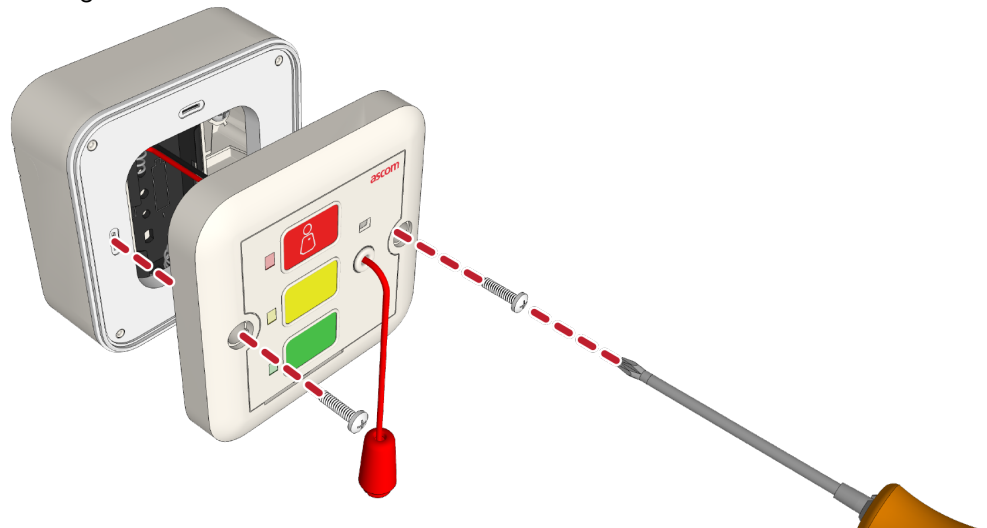
1. Place the gasket on the spacer and orient the gasket so it fits neatly.
2. Pull the battery wires and connector through the gasket.



3. Insert the battery connector (See [Figure 1. NUWPC3 Base Orientation and mounting, page 3](#), item 4) into the socket on the rear side of the module.



4. Place the module on the gasket and make sure it fits neatly.
5. Use the 2 provided screws and a Phillips screwdriver to screw the module onto the holes in the spacer (See [Figure 1. NUWPC3 Base Orientation and mounting, page 3](#), item 3). Tighten the screws, but do not over tighten them.



6. Connect the bottom half of the cord to the part coming from the module. The two halves should firmly click together.