



VISIT US ONLINE:  
Have a question?  
Need service or repair?  
Want to leave a comment?  
[PyleUSA.com/ContactUs](http://PyleUSA.com/ContactUs)



**Questions? Issues?**  
We are here to help!  
Phone: (1) 718-535-1800  
Email: [support@pyleusa.com](mailto:support@pyleusa.com)



**PWMABT550BK**

**Wireless BT Rugged & Portable Speaker System**  
Work / Job Site Stereo, Built-in Rechargeable Battery,  
MP3/USB/SD, AM/FM Radio (Black)

**User Manual**

We recommend that you read this manual carefully so that you can fully take advantage of the advanced and convenient functions of the Portable Speaker System. We also recommend that you keep this manual in a safe and handy place for future reference.

### ⚠ CAUTION

**WARNING! DON'T OPEN THE MACHINE TO AVOID ELECTRIC SHOCK, PLEASE ASK HELP FROM PROFESSIONAL TECHNICIANS.**

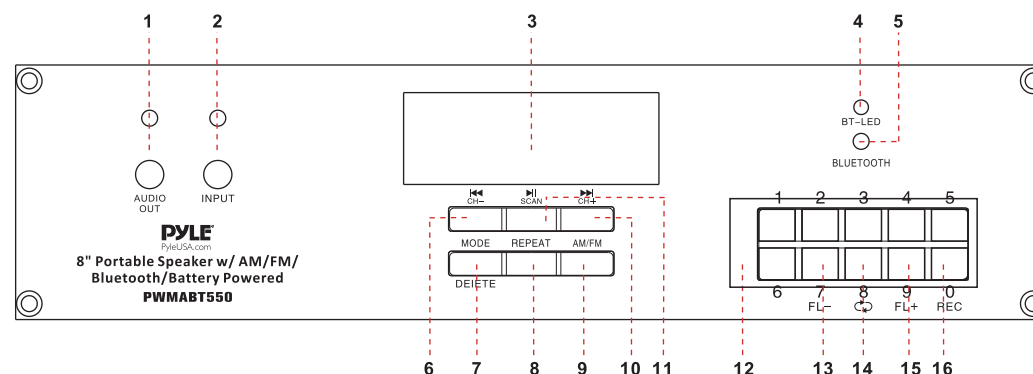


### SAFETY INSTRUCTION

1. Read this manual carefully before using. Retain for future reference.
2. All warnings on the speaker and in the operating instructions should be adhered to.
3. Do not use this apparatus near water.
4. Do not block any of the ventilation openings. Install in accordance with the manufacturers instructions. Do not install near any heat sources such as radiators, heat registers, stoves, or other apparatus (including amplifiers) that produce heat. Do not install the speaker in an airtight location.
5. Protect the power cord from being walked on or pinched particularly at plugs, convenience receptacles, and the point where they exit from the apparatus.
6. Switch OFF and unplug then use a soft cloth to clean the exterior of the unit if it becomes dirty. If necessary, use a damp cloth that has been wrung out well to wipe it.
7. Unplug this apparatus during lightning storms or when unused for long periods of time.
8. Keep foreign objects and liquid from entering the unit to avoid a short circuit, fire and electrical accidents.
9. Place the speaker in a dry location.
10. Refer all servicing to qualified service personnel. Servicing is required when the apparatus has been damaged in any way, such as power-supply cord or plug is damaged, liquid has been spilled or objects have fallen into the apparatus, the apparatus has been exposed to rain or moisture, does not operate normally, or has been dropped.

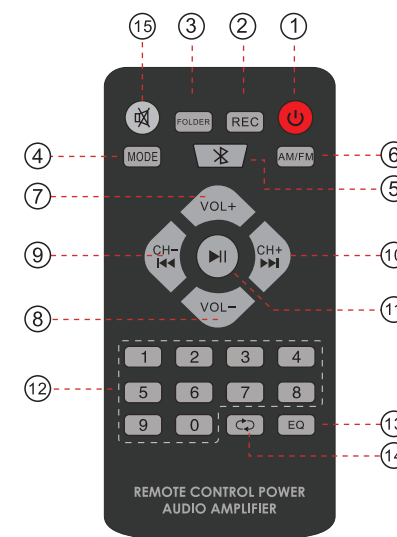
### Front Panel

- |                                     |                               |
|-------------------------------------|-------------------------------|
| 1. Audio Output                     | 9. AM/FM Selectors            |
| 2. AuxInput                         | 10. Next Song Selector        |
| 3. Display Screen                   | Next Radio Station            |
| 4. BT-LED                           | 11. Play/pause For USB/SD     |
| 5. Indicator Lights for Wireless BT | Auto Scan For Radio Stations  |
| 6. Previous Radio Station           | 12. 0-9 Selectors             |
| Previous Songs Selector             | 13. Previous folder selector  |
| 7. Input Selectors                  | 14. Folder circulate function |
| DELETE function                     | 15. Next folder selector      |
| 8. Repeat                           | 16. Record Function           |



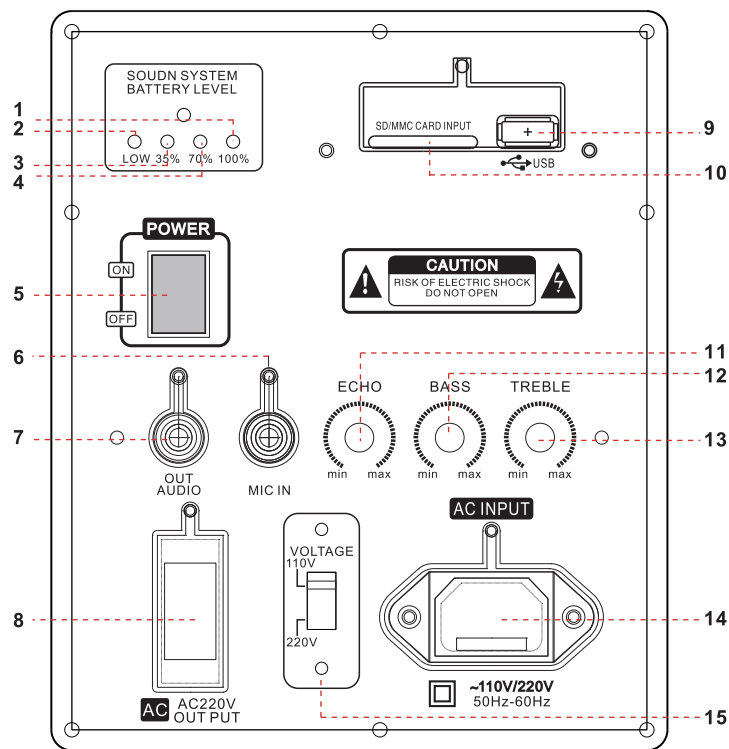
### Remote Control

- |                              |             |
|------------------------------|-------------|
| 1. Standby                   | 12. Program |
| 2. Record.                   | 13. EQ      |
| 3. Folder                    | 14. Repeat  |
| 4. Mode (MP3, FM, BT)        | 15. Mute    |
| 5. Wireless BT               |             |
| 6. AM/FM                     |             |
| 7. Vol+                      |             |
| 8. Vol-                      |             |
| 9. Previous song on Mp3 mode |             |
| Previous channel on FM mode  |             |
| 10. Next song on Mp3 mode    |             |
| Next channel on Mp3 mode     |             |
| 11. Pause/Play/Auto search   |             |
| channel on FM mode           |             |



## Rear Panel

1. Indicator lights for Low
2. Indicator lights for battery power level
3. Indicator lights for battery power level
4. Indicator lights for battery power level
5. Power switch
6. Mic input
7. Audio output
8. AC 220V output
9. USB input for Mp3 player
10. SD/MMC card input for Mp3 player
11. ECHO controller
12. Bass volume controller
13. Treble volume controller
14. Power Plug
15. 110/220 Voltage Selector



## Turning ON/OFF

The PA speaker can be powered when connected to main power or using the internal battery.

1. Connect the power cable to the unit.
2. Connect the other end of power cable to main power.
3. Turn on the switch at the main power point.
4. The unit will automatically power on when connected to main power.

## Charging

**Before using the PA speaker for the first time, charge the unit at least 8 hours.**

1. Connect the power cable at the back of the panel.
2. Recharge indicator light will be on when it is charging.

**Notes:** The internal battery will charge while the unit is being operated and the power switch is on. It is better to charge the unit while the power switch is off.

## Using the Wired Microphone

**You can connect the wired microphone to this unit using the MIC INPUT located on the top of control panel.**

1. Turn off the unit.
2. Connect your wired microphone to the MIC INPUT located on back of the control panel.
3. Adjust the microphone volume by tuning the MIC VOL/ECHO knobs located on back control panel.

### NOTES:

You can use the wired microphone and wireless microphone at the same time.

## USB/SD Card Playback

**You can play music from USB stick or SD Card using the USB/SD slot on the PA speaker.**

1. Turn on the unit.
2. Insert your USB or SD card into the slot.
3. Once inserted the USB or SD card unit will automatically play.
4. You can use the CH-/CH+/SCAN to control and play music.

**NOTES:** The speaker system can play the following audio file formats: MP3, MP4, WMA. The USB/SD Card max size is 32GB. Operation may be slower when searching large memory files. It will need several seconds to respond when your USB/SD Card full of contents.

## Recording Function

When you insert USB or SD card, insert the microphone, press REC more than 3 seconds, you can record what you say. If you don't want keep the recorded files, press Delete key, it will delete the recorded files. Press and hold REC button to enter the AUX signal recording when AUX begins to play.

### **Wireless BT Playback**

You can connect your Wireless BT phone or other device to the PA speaker.

1. Turn **ON** the unit.
2. Press the **ON/OFF** switch on front panel to turn **ON** Wireless BT, indicator light is lit.
4. Use your Wireless BT phone or other device to search for the Wireless BT name "**PYLE SPEAKER**".
5. Select the "**PYLE SPEAKER**" Wireless BT name and wait for the device to pair automatically.
6. You do not need code and get connected with unit.
7. Once paired you can play music from your Wireless BT device.
8. You can use the **VOLUME/BASS/TREBLE** to adjust the sound level for Wireless BT, also you can adjust the Wireless BT music sound through your own phone or other device.

#### **NOTES:**

Check the volume controller both on the unit and on your phone or other device if there is no sound through the PA speaker during Wireless BT.

### **Using the Radio**

1. Turn **ON** the unit.
2. Press **MODE** button to select **FM Radio**
3. Press **CH-/CH+** to select your desired radio station. Ensure that you have the extended the antenna located on the rear of the speaker. It will ensure the best possible radio quality and signal strength.
4. When you first use the radio, press and hold **SCAN** button, it will auto search and store the radio stations with the strongest signal.

### **System Features:**

- Heavy Duty Construction & Protective Rubber Frame
- Splash Proof Weather Resistant Construction
- Wireless BT Music Streaming Ability
- USB Flash & SD Memory Card Readers
- USB Doubles as Device Charging Port
- MP3 Digital Audio File Compatibility
- AM/FM Radio with Digital LCD Display
- Full Range Stereo Sound Reproduction
- Impressive Bass Performance

- Built-in Rechargeable Battery, 6+ Hour Battery Life
- Front Panel Button Control Center
- Mic Volume, Echo, Bass, Treble Audio Configuration Settings
- Aux (3.5mm) Input
- 1/4" (6.35mm) Microphone Input & Audio Output
- Connect & Stream Audio from External Devices
- 120V AC Outlet for External Device Power
- Includes Power Cable & Audio (3.5mm to RCA) Cable

### **Wireless BT Connectivity:**

- Built-in BT for Wireless Music Streaming
- Works with All of Your Favorite Devices  
(iPhone, Android, Smartphone, iPad, Tablet, Computer, etc.)
- Wireless BT Version: 3.0
- Wireless BT Wireless Range: 65'+ Ft.

### **Recording Ability:**

- Quick & Easy Digital Audio File Creation
- Records Voice from Your Connected Microphone
- Save Files via USB Flash or SD Memory Card
- Easy Transfer to PC or Mac
- Audio File-Type Created: .mp3
- \*Microphone Not Included

### **Technical Specs:**

- Sound System: 8" Full Range Speaker, 1" Tweeter
- Max Power Output: 100 Watt (50 Watt RMS)
- Battery: Rechargeable Lead Acid, 12V
- Up to 5.5 Hour Battery Life
- Sensitivity: 98 +/-2dB
- Digital Audio File Support: MP3, WMA
- Stereo Radio: AM/FM PLL Tuner
- Radio Preset Memory: 50 Stations
- Maximum USB/SD Support Size: 32GB
- Power: 110/240V