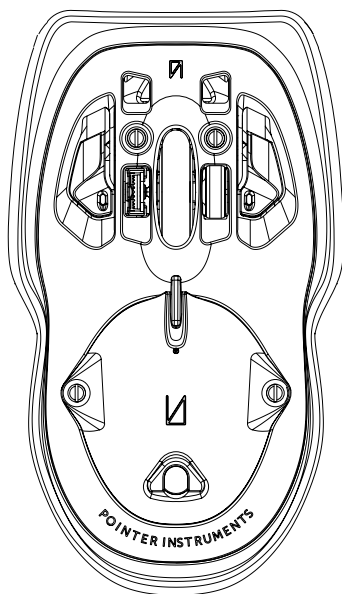


INTRODUCTION

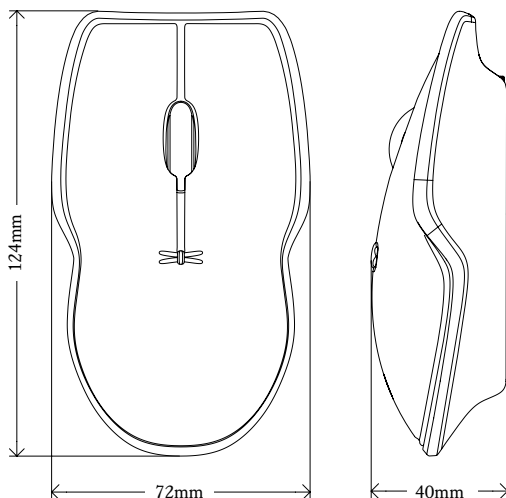


Pointer Instrument: A precise universal tool designed to last.

We took the humble computer mouse and reimagined it into a wireless Pointer Instrument. It is an exemplary: designed to a high-grade; is ergonomically comfortable; can track on almost any surface; connect via cable, dongle and Bluetooth; allows wireless charging and is even expandable for future accessories.

It is a fusion of art, practicality and precise engineering. With 4 leather colour and 2 metal base combinations there is a pointer instrument to suit all.

SPECIFICATIONS



Interface : Bluetooth 5.0 | wireless 2.4G dongle | USB-C

Sensor : Pixart PAW 3805 Optical Sensor

-Glass thickness minimum 5mm

DPI: 800 | 1200 | 2000 | 3000

Hand Orientation : Ambidextrous

Recharge :  Wireless Qi | USB-C

Dimensions : 124mm x 72mm x 40mm

Weight : Aluminium 180g | Brass 210g

Compatibility : Windows | MacOS | Linux | Android

Battery : 3.7V - 750 mAh Li-ion Rechargeable Battery

-Molex 51006 or "Losi Connector"- 9mm x 43mm x 25mm -

BOX CONTENTS

-1- The pointer instrument.

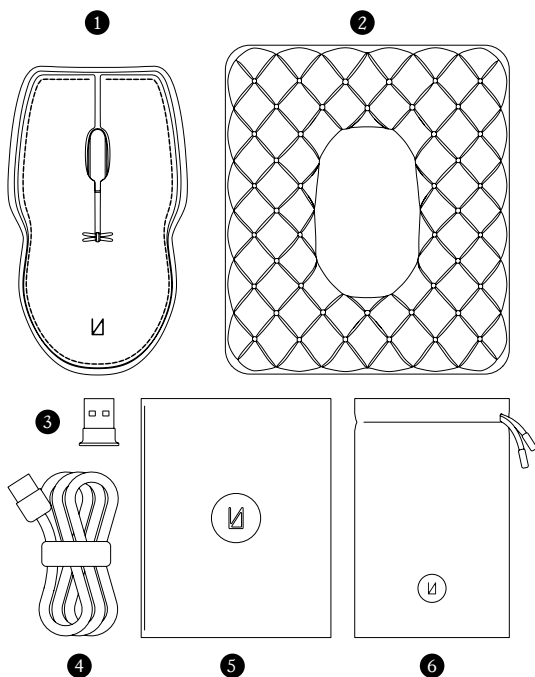
-2- Reusable frame.

-3- USB dongle

-4- USB to USB-C cable.

-5- Guide booklet.

-6- Canvas Pouch.



PRODUCT FEATURES



- Genuine Calf Leather -

Lightly treated calf leather maximises tactile comfort and ages well.



- Solid Brass or Aluminium Base -

Polished brass and aluminium allows easy maintenance and ages well.



- Replaceable Top Cover -

Allows for a customised material / colour combination.



- Triple Modes: Bluetooth 5.0 | 2.4G | Cable -

Multi modes maximise the flexibility and allow easy connections.



- Dual Charging : Wireless Qi | USB-C -

Qi standard wireless charging offers a mess free charging option.



- Track On Glass Sensor -

Track on glass sensor requires minimum 5mm glass thickness.



- Designed For Life -

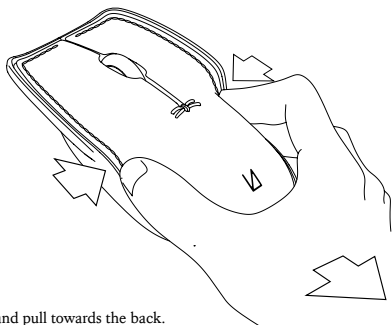
Carefully designed inside and out for easy repair and maintenance.



- Future Upgrades -

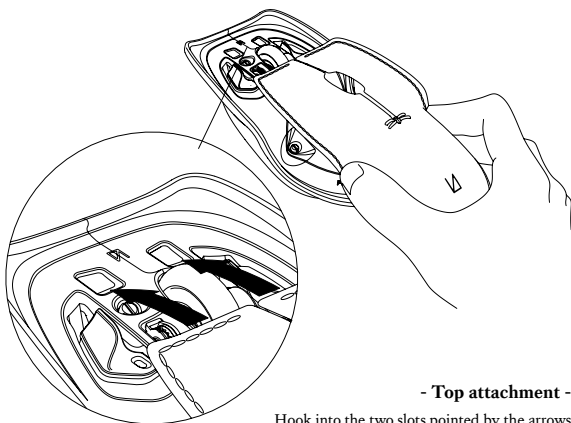
Built-in hardware allows future software upgrades such as G-sensor gestures, airmouse and easy connection etc. We will also release plugin accessories offering size adjustment for ultimate comfort. Please look out for updates on our website: www.lunarartefacts.com

REPLACING TOP COVER



- Top removal -

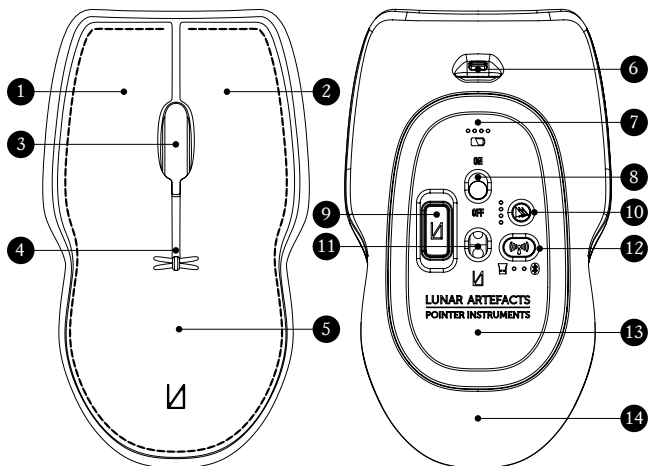
Pinch middle section and pull towards the back.



- Top attachment -

Hook into the two slots pointed by the arrows and drop the back for magnetic self adjustment.

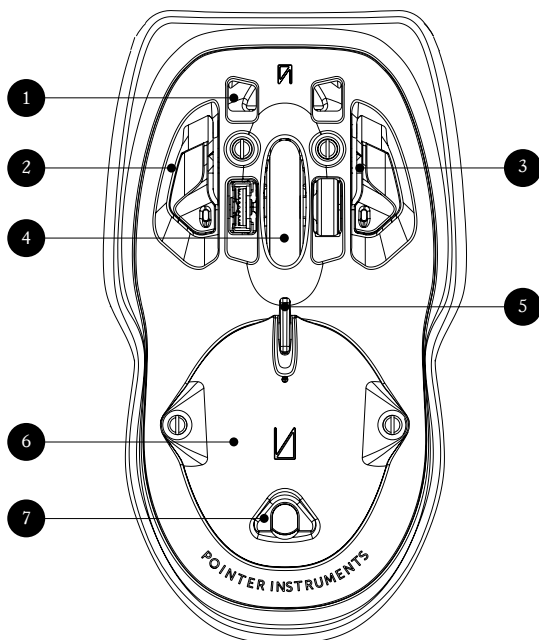
EXTERIOR OVERVIEW



- 1- Left mouse button
- 2- Right mouse button
- 3- Scroll wheel
- 4- Charge indicator
- 5- Genuine calf leather top
- 6- USB-C Socket
- 7- Battery gauge

- 8- Power switch
- 9- USB Dongle
- 10- DPI (Sensitivity) button
- 11- Tracking sensor
- 12- Connection button
- 13- Wireless charging point
- 14- Solid metal shell

INTERNAL OVERVIEW



-1- Leather top latch point

-2- Left mouse button

-3- Right mouse button

-4- Scroll wheel

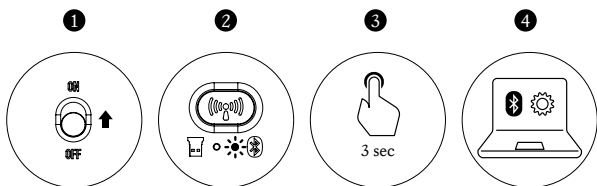
-5- Charge indicator

-6- Battery lid

-7- Magnet latch

CONNECTIONS

- Bluetooth Connection -

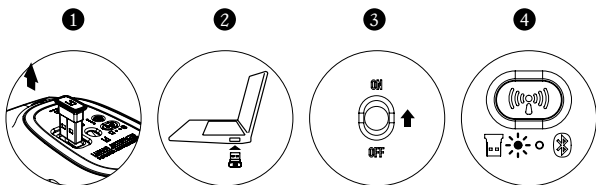


- Step 1 Turn the ON/OFF button to ON position.
- Step 2 Press the connect button to switch to Bluetooth mode with bluetooth indicator on.
- Step 3 Press and hold the connect button (same button as step 2) for 3 seconds and release. The LED light will start to flash in a fast pace. The mouse is now in pairing mode.
- Step 4 For windows, go to “Bluetooth Devices (Bluetooth Settings)” and select “Add a Bluetooth Devices (Add Bluetooth or other device)”, once the system finds “Pointer Instrument”, click to Pair.
- For Mac, go to “System Preferences” and select “Bluetooth”, once “Pointer Instrument” appears, click to Pair.
- Once pairing is successful, the LED indicator will stop flashing and stay lit for a few seconds.

*For the exact pairing process, please refer to the specific PC/MAC system for guidance.

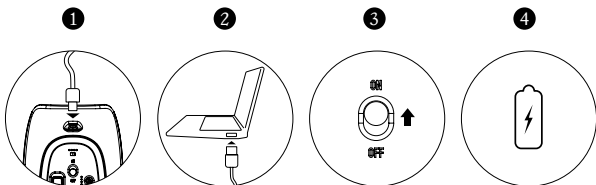
CONNECTIONS

- 2.4G Dongle Connection -



- Step 1 Retrieve the Dongle from the back of the mouse.
- Step 2 Insert the Dongle into the device.
- Step 3 Turn the ON/OFF button to ON position.
- Step 4 Press the connect button to Dongle (2.4G) mode with Dongle indicator on. The process should be plug and play.

- Cable Connection -

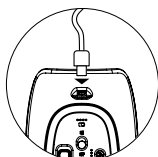


The Cable Connection is plug and play. The mouse will also charge while plugged in.

CHARGING | BATTERY

- Charging -

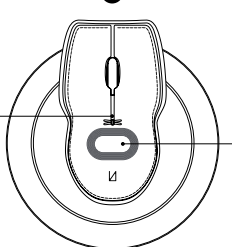
1



USB cable
(approx 1.5hrs)

Wireless charging point
is located towards rear
of the device.

2



wireless charging
(approx 2.5hrs)

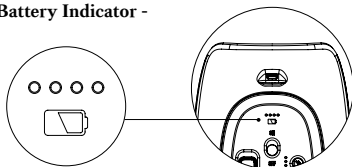
Top light indicates charging/battery state:

- ☀ Flash slowly when battery $\leq 25\%$
- ● Light on during charging
- ○ Light off when fully charged

- Battery Indicator -

By flipping the device, the built-in G sensor will activate the battery power indicator to light up for 5 seconds.

☀ flash ● on ○ off



use: ☀○○○ ●○○○ ●●○○ ●●●○ ●●●●

<3% | 3- 25% | 25- 50% | 50 - 75% | $\geq 75\%$

charging: ☀○○○ ●☀○○ ●●☀○ ●●●☀ ●●●●

<25% | 25- 50% | 50- 75% | $\geq 75\%$ | 100%

DPI SETTING

DPI stands for “dots per inch” is the typical way of measuring sensitivity of an interface device. Usually the larger the screen size, the higher the DPI, however there is no “correct” setting. We highly recommend flicking through to feel what’s comfortable.

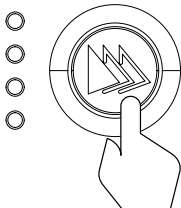
DIP SETTING: Press to switch DPI setting

800 DPI

1200 DPI

2000 DPI

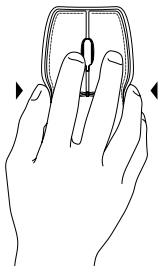
3000 DPI



COMFORT

Repetitive tensing of hand and wrist muscles for prolonged periods leads to shoulder and neck pain.

The Pointer Instrument is designed to “hook” to the shape of the hand delivering accurate movements without the need to grip.



We are all used to holding tightly so being relaxed might need a little getting used to. However the more relaxed your hand is the less stress your arm endures.

As its impossible to produce one size that fits all, we have designed sizing attachments for a better fit. So if you feel any discomfort, we recommm trying a hand grip attachment.

Please visit www.lunarartefacts.com for more details.

CARE | MAINTENANCE



The leather is intended to age, getting darker and smoother once it's been used. You can clean and condition your leather with mild leather soap and professional leather conditioner. Regular cleaning every 3-6 months will result in a pleasant tonal variation that gets better with time.



The uncoated metal shells will tanish evenly over time creating a unique patina. You can use metal polish to clean up or maintain a certain level of shine. **Note - remove leather top first before polishing as it will stain the leather!**



Gold plated shells will retain their shine for a prolonged period. Please clean gently with a soft cloth and avoid scratching. **Do not use metal polish to clean plated products!**



To extend the battery life, try to avoid draining the battery completely or keeping the mouse fully charged at all time. However, it is recommended to operate a full charge and discharge once a month.

CARE | MAINTENANCE



1

Handle
with care



2

Avoid
Moisture



3

Avoid
Heat



4

Warranty
if possible



5

Do not
throw away

1. Please handle with care and always use on a flat surface.
2. Avoid moisture and liquids as they may affect the electronics, leather and metal shell. If spillage occurs, switch off and soak up with towel and leave completely dry (24h+) before switching back on.
3. Keep under 40°C (104°F) as high temperatures will adversely affect the battery. Also avoid prolonged periods in direct sunlight, this will cause the leather to dry and crack.
4. Every effort has been made to make the device as easy to maintain as possible, however do to safety and legal reasons, please do not attempt self repair as this will void warranty. For more information please go to page 13.
5. This product is designed for life and should not be thrown away! Please sell, give, donate or even send back to us. For more information please go to page 14.

SUPPORT + WARRANTY



Please scan the QR Code above to be taken to our Help and Support:
www.lunarartefacts.com/support

Even though our products are designed to be repaired, due to safety and legal reasons we cannot allow customers to perform repairs at home. **DO NOT** attempt to repair the product yourself as it will void the warranty!

**IF YOU HAVE ANY ISSUES WITH THE PRODUCT, PLEASE
FIRST CONTACT THE PLACE OF PURCHASE OR EMAIL :
support@lunarartefacts.com**

Lunar Artefacts Limited only warrants the original purchaser of this product, when purchased from an authorized reseller or distributor, that this product will be free from defects in material and workmanship under normal use and service for the length of the warranty period, identified on your product package and/or at www.lunarartefacts.com under specifications for your product, from the date of purchase (or delivery as may be required in certain jurisdictions).

Lunar Artefacts reserves the right, before having any obligation under this warranty, to inspect the damaged product. This limited warranty does not cover any damage due to accidents, misuse, abuse or negligence. Please retain the dated sales receipt as evidence of the original purchaser and date of purchase as you will need it for any warranty services. This warranty is non-transferable and is limited to the original purchaser and the country in which the product was purchased. This limited warranty does not, under any circumstances, cover the replacement of or reimbursement for any electronic device or personal property that is not a Lunar Artefacts product.

No Lunar Artefacts reseller, distributor, agent or employee is authorized to change or extend the terms of this Limited Warranty. Lunar Artefacts reserves the right to amend the terms of this Limited Warranty at any time without notice.

RETURNING A PRODUCT



**IF THE PRODUCT IS PURCHASED FROM A LUNAR
ARTEFACTS RESELLER, PLEASE FIRST CONTACT THE
RESELLER IN REGARDS TO THE LIMITED WARRENTY
CLAIM.**

If you are unable to make the claim through the reseller, or if you have purchased the Product directly from lunarartefacts.com; Please scan the barcode above to use the Contact Form or contact us via email to support@lunarartefacts.com and include your Name, Address and Proof of Purchase.

If the problem requires servicing, we will issue you with a Merchandise Authorization Number (RMA number) and return instruction.

**DO NOT SEND OR RETURN PRODUCTS TO US WITHOUT A
RMA NUMBER!**

We advise that you select a method of shipping that is both insured and trackable (e.g. UPS, DHL, FedEx). Any expense of claiming under this Limited Warranty will be borne by the person making the claim (including any shipping and handling charges in returning the product, as well as any applicable customs, duties or taxes in relation to the claim). If the Product is validly returned under the terms of this Limited Warranty, Lunar Artefacts will be responsible for postage expenses for shipping the Product back to you (but not any customs charges, duties, or taxes).

You are responsible for ensuring that the Product is properly packaged and will bear the full risk of loss or damage for any product that is returned improperly packaged. Lunar Artefacts shall not be responsible for items damaged or lost in transit while shipping to us.

If the procedure herein is not followed, Lunar Artefacts reserves the right to reject the claim at its discretion.

FCC Statement

This device complies with part 15 of the FCC Rules. Operation is subject to the following two conditions:

(1) This device may not cause harmful interference, and (2) this device must accept any interference received, including interference that may cause undesired operation.

Any Changes or modifications not expressly approved by the party responsible for compliance could void the user's authority to operate the equipment.

Note: This equipment has been tested and found to comply with the limits for a Class B digital device, pursuant to part 15 of the FCC Rules. These limits are designed to provide reasonable protection against harmful interference in a residential installation. This equipment generates uses and can radiate radio frequency energy and, if not installed and used in accordance with the instructions, may cause harmful interference to radio communications. However, there is no guarantee that interference will not occur in a particular installation. If this equipment does cause harmful interference to radio or television reception, equipment generates, uses and can radiate radio frequency energy and, if not installed and used in accordance with the instructions, may cause harmful interference to radio communications. However, there is no guarantee that interference will not occur in a particular installation.

If this equipment does cause harmful interference to radio or television reception,
—Reorient or relocate the receiving antenna.

—Increase the separation between the equipment and receiver.

Connect the equipment into an outlet on a circuit different from that to which the receiver is connected.

—Consult the dealer or an experienced radio/TV technician for help.

FCC RF Radiation Exposure Statement

The device has been evaluated to meet general RF exposure requirement. The device can be used in portable exposure condition without restriction