



**ENG**

# **TUYA SMART LIFE APP**

For models:

ELIS  
FIRO  
RONI

**User**  
manual

# TUYA SMART LIFE APP

## User manual

### Contents

<b>HOW TO START</b>	3
Operation guideline.....	3
FCC Caution (FCC ID: 2AJCLTWAC-TYWFS).....	3
<b>PART 1. SPECIFICATION AND BASIC INFORMATION</b>	4
Minimum specifications on a Smart phone .....	4
Basic parameters for Wi-Fi module.....	4
Wi-Fi module location and appearance in indoor unit .....	4
<b>PART 2. APPLICATION CONFIGURATION</b>	5
Download and Install the App .....	5
Activate APP.....	6
Registration.....	7
Login.....	8
Forgot the password.....	10
Add Device .....	11
<b>PART 3. AIR CONDITIONER CONTROL</b>	13
Control form 1 .....	14
The main control interface.....	14
Mode setting .....	14
Select fan speed.....	15
Function setting.....	15
Timer adding .....	16
Timer Management.....	17
Control form 2 .....	17
The main control interface.....	17
Mode setting .....	18
Fan speed selection .....	18
Air Flow control .....	19
ECO function .....	20
Sleep function.....	21
Timer (on) setting .....	22
Timer (off) setting .....	23
Timer management.....	24
More functions .....	24
Device details and device management.....	28
<b>PART 4. ACCOUNT MANAGEMENT</b>	31
Account Profile setting.....	31
2. Home (Family) management .....	32
<b>PART 5. TROUBLE SHOOTING</b>	33
<b>IMPORTANT NOTICES</b>	34

## HOW TO START

### 1. OPERATION GUIDELINE

Please take below simple guideline instruction as reference.

Operation Steps	Operation Items	New Account	Re-install APP (registered before)
Step 1	Download and Install APP	YES	YES
Step 2	Activate APP	YES	YES
Step 3	Registration Account	YES	NO
Step 4	Login	YES	YES
Step 5	Add Device to control	YES	Registered Device will remain

**Note:**

*If you registered the account and added device before, when you re-install the APP again and login, the added device will remain.*

### 2. FCC CAUTION (FCC ID: 2AJCLTWAC-TYWFS)

This device complies with part 15 of the FCC Rules. Operation is subject to the following two conditions: (1) This device may not cause harmful interference, and (2) this device must accept any interference received, including interference that may cause undesired operation.

Any Changes or modifications not expressly approved by the party responsible for compliance could void the user's authority to operate the equipment.

**NOTE:** This equipment has been tested and found to comply with the limits for a Class B digital device, pursuant to part 15 of the FCC Rules. These limits are designed to provide reasonable protection against harmful interference in a residential installation. This equipment generates uses and can radiate radio frequency energy and, if not installed and used in accordance with the instructions, may cause harmful interference to radio communications. However, there is no guarantee that interference will not occur in a particular installation. If this equipment does cause harmful interference to radio or television reception, which can be determined by turning the equipment off and on, the user is encouraged to try to correct the interference by one or more of the following measures:

- Reorient or relocate the receiving antenna.
- Increase the separation between the equipment and receiver.
- Connect the equipment into an outlet on a circuit different from that to which the receiver is connected.
- Consult the dealer or an experienced radio/TV technician for help.

The distance between user and device should be no less than 20cm.

PART 1. SPECIFICATION AND BASIC INFORMATION

1. MINIMUM SPECIFICATIONS ON A SMART PHONE

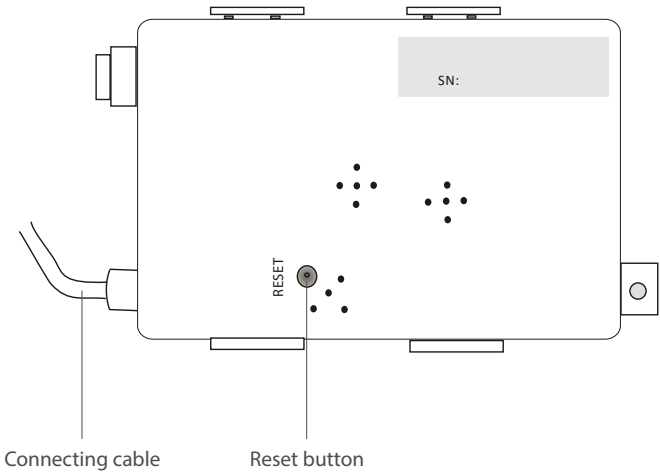
Android 5.0 version or higher  
IOS 9.0 version or higher

2. BASIC PARAMETERS FOR WI-FI MODULE

Parameters	Details
Network frequency	2.400 - 2.500GHz
Standards of WLAN	IEEE 802.11 b/g/n(channels 1-14)
Protocol stack support	IPv4/IPv6/TCP/UDP/HTTPS/TLS/MulticastDNS
Security support	WEP/WPA/WPA2/AES128
Network type support	STA/AP/STA+AP

3. WI-FI MODULE LOCATION AND APPEARANCE IN INDOOR UNIT

Open the front panel, the Wi-Fi module is nearby the electric box cover or on the panel.





## PART 2. APPLICATION CONFIGURATION

### 1. DOWNLOAD AND INSTALL THE APP



Smart Life

#### 1.1. FOR ANDROID SMART PHONE

**Method1:** Please scan the QR code with a browser scanner, download and install the application.

**Method2:** Open the Google "Play Store" on your smart phone and search "Smart Life".



#### 1.2. FOR IOS SMART PHONE

**Method1:** Please scan the QR code and follow the tips to get into AppStore , download and install the APP.

**Method2:** Open the Apple "AppStore" on your smart phone and search "Smart Life", download and install the APP.



### NOTE

Please enable the permissions of Storage/Location/Camera for this APP when installing. Otherwise it will have some problems when operating.

The air conditioner can also be controlled using the TUYA SMART LIFE application, which other ROTENSO® devices are controlled. However, due to the inability to control all the functions of the air conditioner in TUYA SMART APP we recommend, to use the application described in this user manual, which is optimized to work with air conditioners. However, if you decide to use the TUYA application, you can download it from GoogleStore / AppStore or using the QR code below.



PART 2. APPLICATION CONFIGURATION

2. ACTIVATE APP

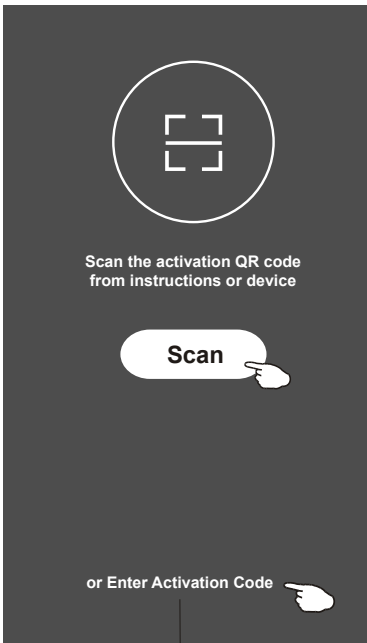
1. Launch the APP “Smart Life” on your smart phone.



Smart Life

2. **Method1:** Tap button “Scan” and scan the right Activate QR code

**Method2:** Tap “or Enter Activation Code” in bottom of the screen, then enter the activate code and tap “CONFIRM”.



or Enter Activation Code

\*\*\*\*\*

CANCEL CONFIRM

Activate QR code and activation code

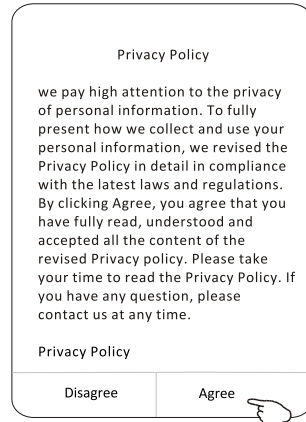
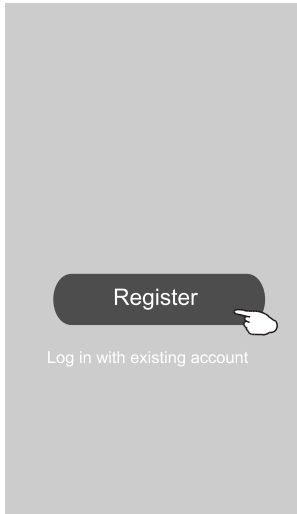


**NOTE:**  
Without the QR code or activation code, you can't activate the APP and using it, please keep them safe.

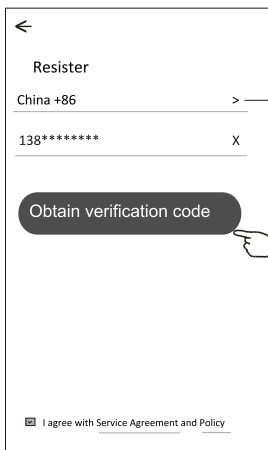
## PART 2. APPLICATION CONFIGURATION

### 3. REGISTRATION

1. If you don't have any account please tap button „Register“.
2. Read the Privacy Policy and tap „Agree“.

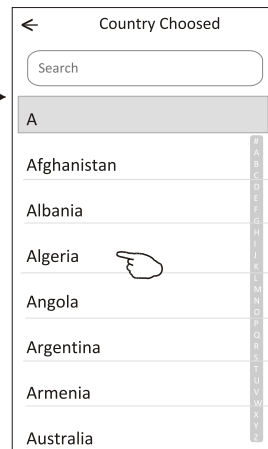


3. Tap ">" and choose the country.
4. Enter your phone number or e-mail address.
5. Tap the button „Obtain verification code“.



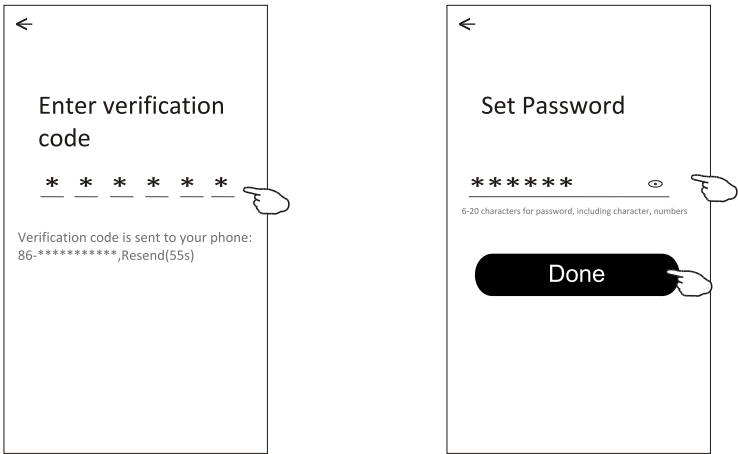
Enter your mobile phone number  
or e-mail address here

Search the country or slide  
the screen up/down to find  
and choose the Country.



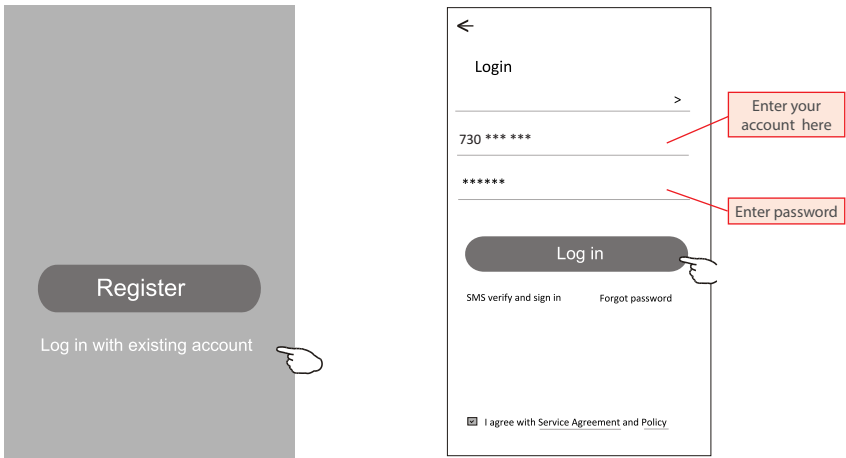
PART 2. APPLICATION CONFIGURATION

- 6. Enter the verification code you received from phone message or e-mail.
- 7. Set the Password with 6-20 characters including characters and numbers.
- 8. Tap “Done”



4. LOGIN

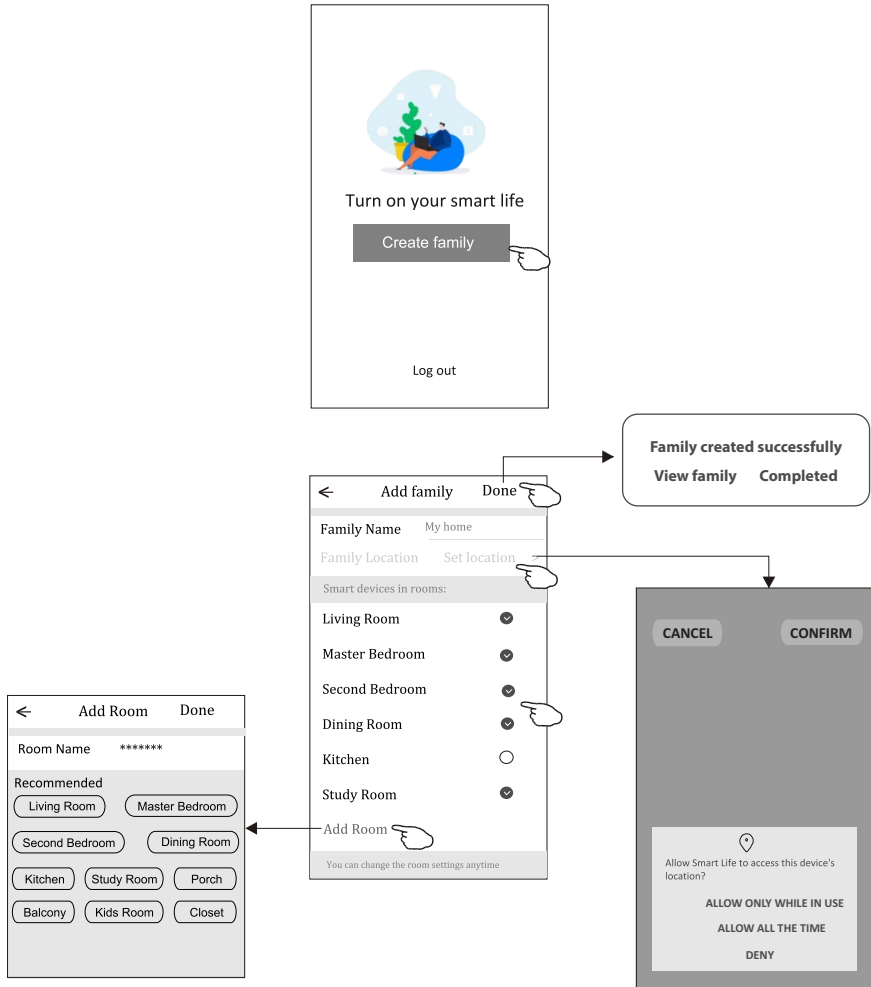
- 1. Tap “Log in with existing account”.
- 2. Enter your registered account and password.
- 3. Tap “Log in” button.



## PART 2. APPLICATION CONFIGURATION

**The first time the APP is used, Create family is needed:**

4. Tap "Create family".
5. Make name for the family.
6. Set the location.
7. Choose default rooms or add new rooms.
8. Tap "Done" and "Completed".



**NOTE:**

The app can open the map on your phone and you can set the location where you are.

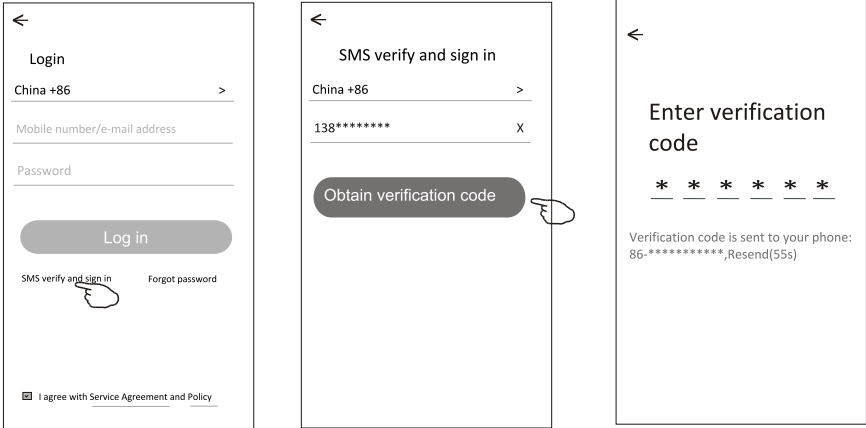
PART 2. APPLICATION CONFIGURATION

5. FORGOT THE PASSWORD

If you forgot the password, you can login as below:

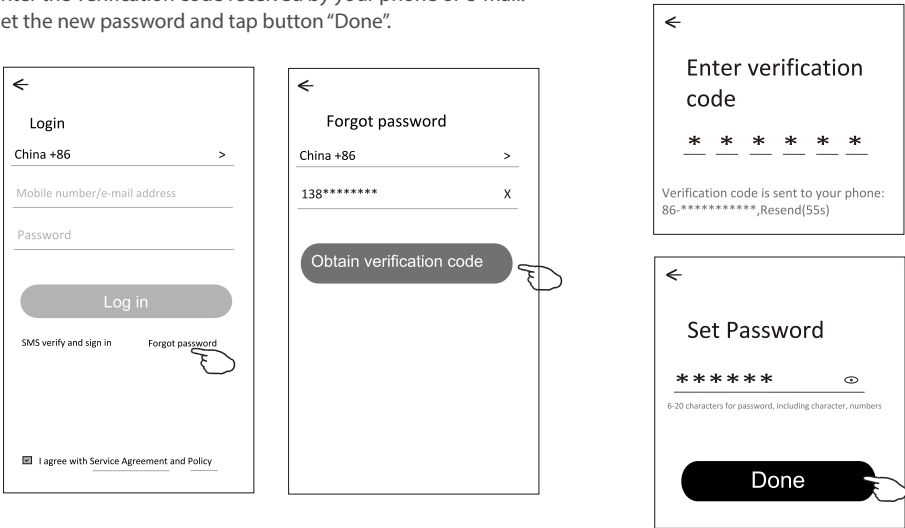
(Only for phone number accounts)

- 1. Tap “SMS verify and sign in”.
- 2. Enter your phone number and tap button “Obtain verification code”.
- 3. Enter the verification code received by your phone.



Or you can reset the password as below:

- 1. Tap “Forgot password”.
- 2. Enter your account(phone number or e-mail address) and tap button “Obtain verification code”.
- 3. Enter the verification code received by your phone or e-mail.
- 4. Set the new password and tap button “Done”.



## PART 2. APPLICATION CONFIGURATION

### 6. ADD DEVICE

There are 2 modes CF(Quick connection) and AP(Access Point) for adding device.

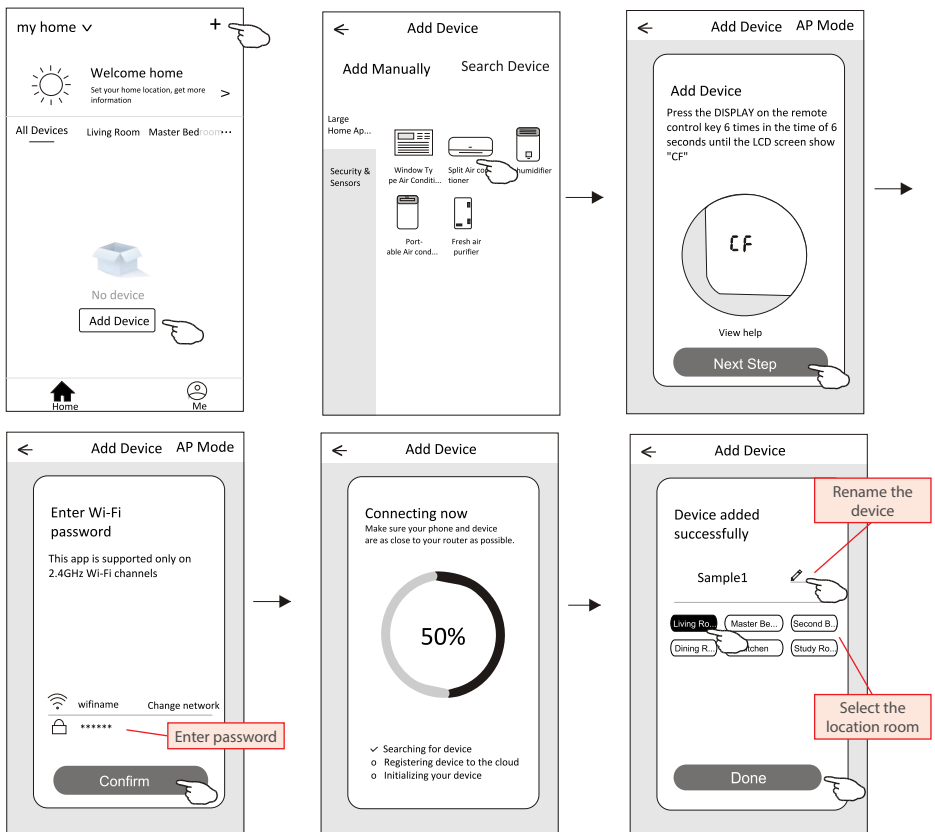
#### 6.1. CF MODE

1. Power on the indoor unit, no need to launch the air conditioner.
2. Click "+" in the upper right corner of the "Home" screen or tap "Add device" on the room which has no device.
3. Tap the "Split Air conditioner" logo.
4. Reset the Wi-Fi module by pressing the "DISPLAY" on the remote controller 6 times , or use a suitable tool to press the reset button on the Wi-Fi module, until it shows "CF" on the indoor display, then tap "Next Step".
5. Input the password of the Wi-Fi which the same as your smart phone connected, tap "Confirm"(You can change network if needed).
6. You can see the percent rate of connecting process, at the same time PP","SA","AP" shining in turn on the indoor display.

"PP" means "Searching the router"

"SA" means "connected to the router"

"AP" means "connected to the server"



## PART 2. APPLICATION CONFIGURATION

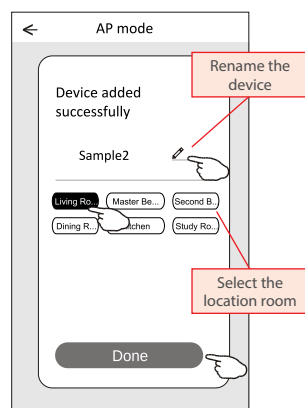
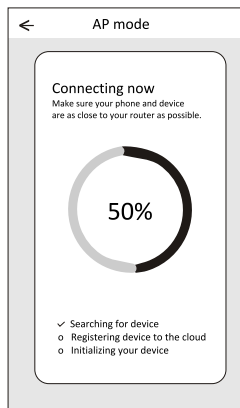
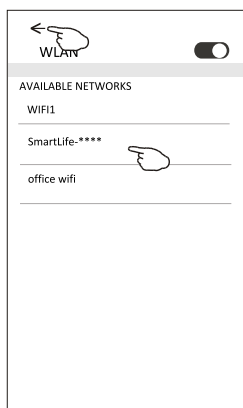
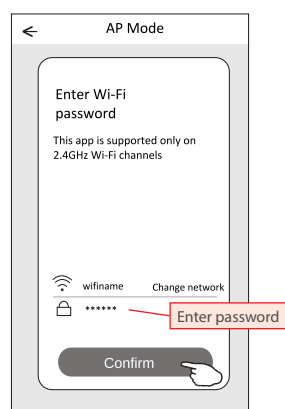
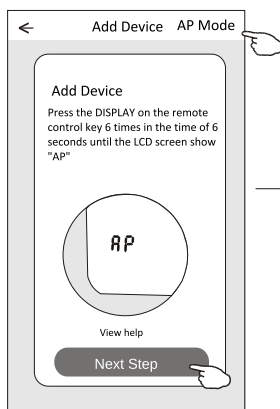
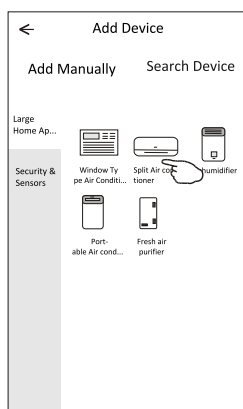
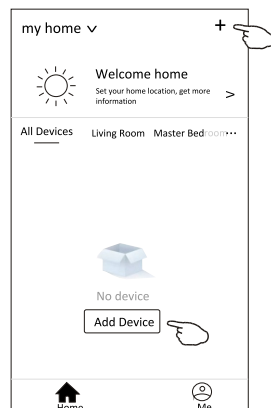
### 6.2. AP MODE

1. Power on the indoor unit, no need to launch the air conditioner.
2. Click "+" in the upper right corner of the "Home" screen or tap "Add device" on the room which has no device.
3. Tap the "Split Air conditioner" logo.
4. Reset the Wi-Fi module by pressing the "DISPLAY" on the remote controller 6 times , or use a suitable tool to press the reset button on the Wi-Fi module, until it shows "AP" on the indoor display, then tap "Next Step".
5. Input the password of the Wi-Fi which the same as your smart phone connected, tap "Confirm".
6. In the network setting screen, select "SmartLife-\*\*\*\*", and tap "<".
7. You can see the percent rate of connecting process, at the same time

"PP" means "Searching the router"

"SA" means "connected to the router"

"AP" means "connected to the server"

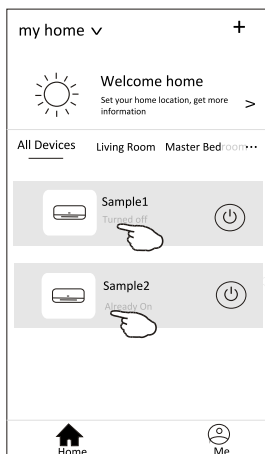




## PART 3. AIR CONDITIONER CONTROL

The device control screen will pop up automatically after adding the device.

The device control screen will pop up manually by tapping the device name on the home screen.

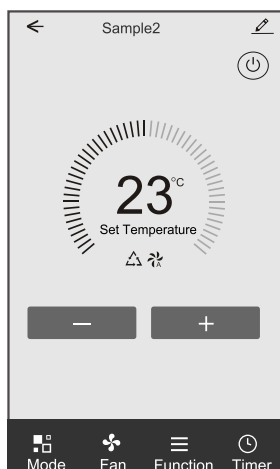


### NOTE:

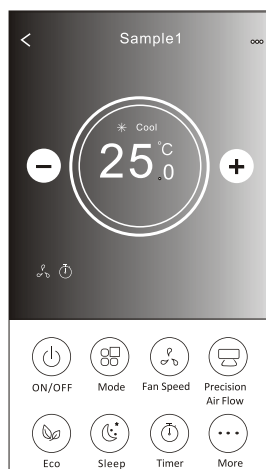
There are two different control forms base on different software or Wi-Fi module firmware.

Please read the manual carefully base on the real control interface.

Control form 1



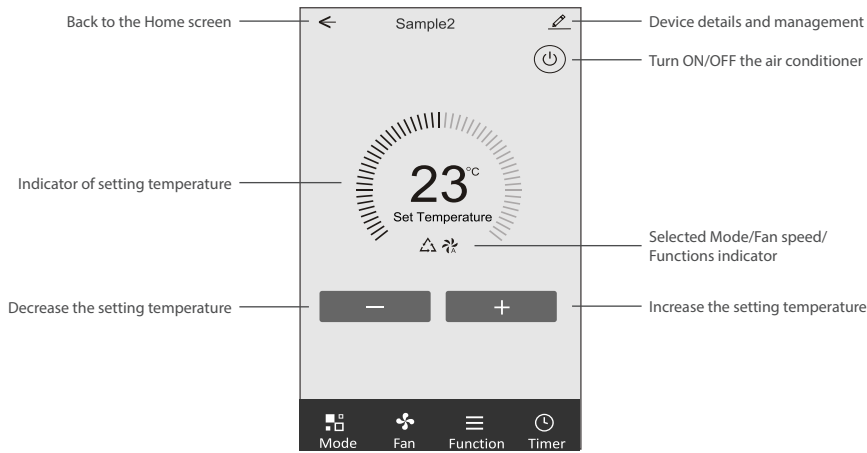
Control form 2



## PART 3. AIR CONDITIONER CONTROL

### 1. CONTROL FORM 1

#### 1.1. THE MAIN CONTROL INTERFACE



#### 1.2. MODE SETTING

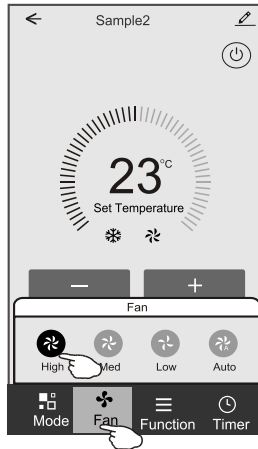
1. Tap Mode to pop up the Mode screen.
2. Select one of the mode Feel/Cool/Heat/Dry/Fan.
3. Tap anywhere around the setting temperature to cancel the Mode setting.



## PART 3. AIR CONDITIONER CONTROL

### 1.3. SELECT FAN SPEED

1. Tap Fan to pop up the Fan screen.
2. Select one of the fan speed High/med/Low/Auto.
3. Tap anywhere around the setting temperature to cancel the selection.



### 1.4. FUNCTION SETTING

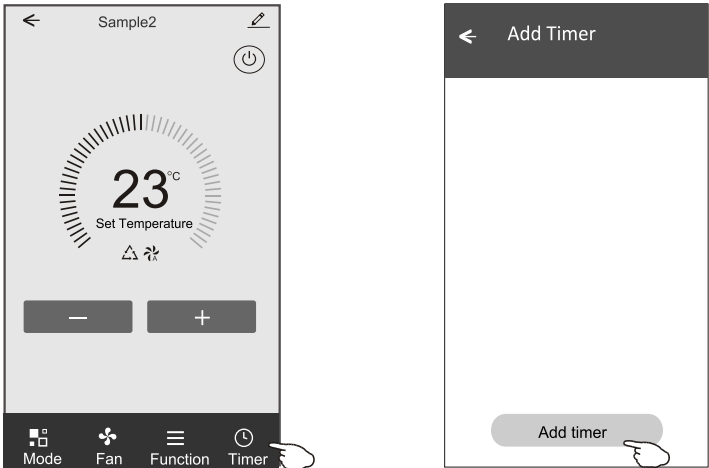
1. Tap Function to pop up the Function screen.
2. Select one of the functions Sleep/Turbo/ECO.
3. Select UP-DOWN/LEFT-RIGHT for auto swing with direction of UP-DOWN/LEFT-RIGHT.
4. Tap anywhere around the setting temperature to cancel the Function setting.



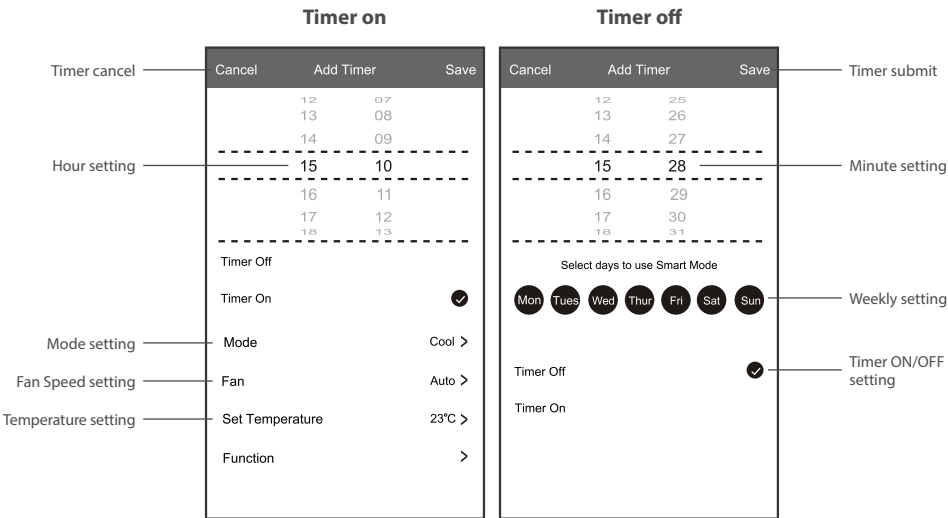
PART 3. AIR CONDITIONER CONTROL

1.5. TIMER ADDING

- 1. Tap Timer to pop up the Add Timer screen.
- 2. Tap Add Timer.



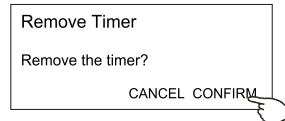
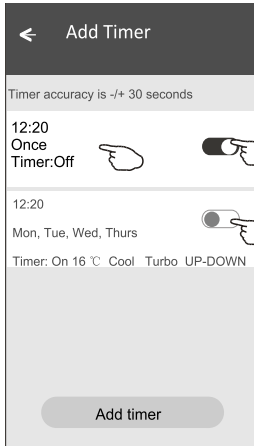
- 3. Select the time, select the repeat days and Timer on/off.
- 4. Select the Mode/Fan speed/Function and select the setting temperature for Timer on.
- 5. Tap Save to add the timer



## PART 3. AIR CONDITIONER CONTROL

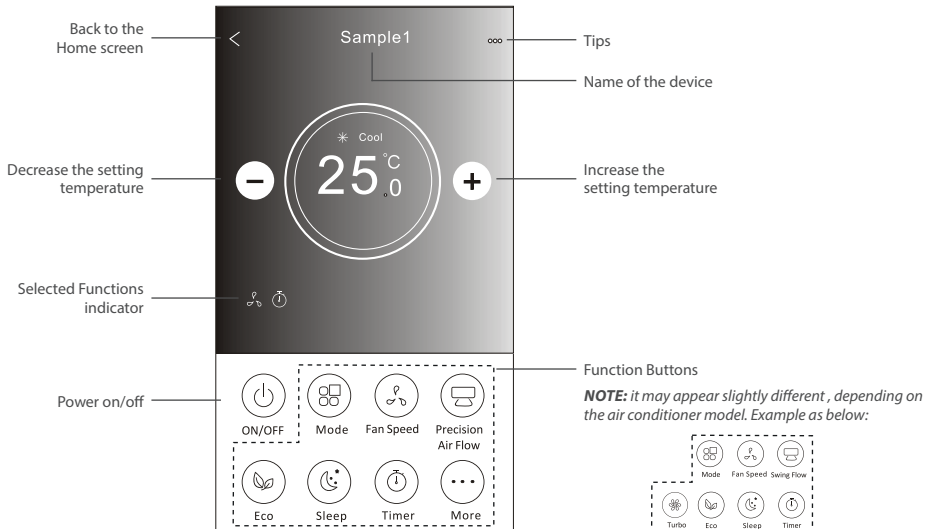
### 1.6. TIMER MANAGEMENT

1. Tap the bar of timer to edit the Timer like the Timer adding process.
2. Click the switch to enable or disable the Timer.
3. Holdind the bar of Timer about 3seconds and pop up the Remove Timer screen, tap CONFIRM and remove the Timer.



## 2. CONTROL FORM 2

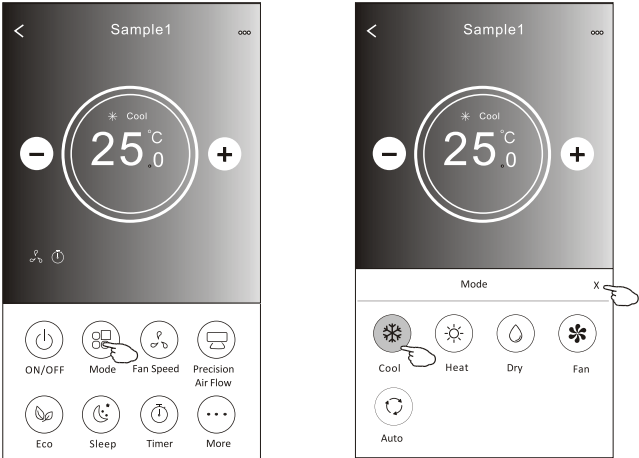
### 2.1. THE MAIN CONTROL INTERFACE



PART 3. AIR CONDITIONER CONTROL

2.2. MODE SETTING

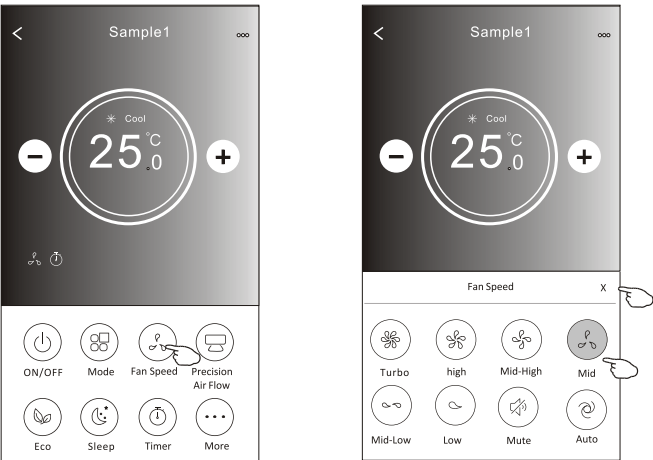
- 1. Tap the Mode button.
- 2. There are 5 modes on the Mode screen, tap one button to set the Air conditioner working mode.
- 3. Tap the X button to back the main control screen.
- 4. The mode and background will change on the screen.



2.3. FAN SPEED SELECTION

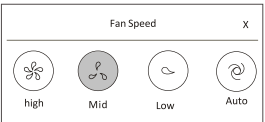
- 1. Tap the Fan speed button.
- 2. Choose your desired fan speed and tap it.
- 3. Tap the X button to back the main control screen.
- 4. The selected fan speed indicator will appear on the screen.

**NOTE:** Fan Speed can't be adjusted on Dry mode .



Mode	Fan Speed
Cool	All speeds
Fan	All speeds
Dry	-
Heat	All speeds
Auto	All speeds

**NOTE:** Fan Speed screen may appear slightly different, depending on the air conditioner model.  
Example as below:

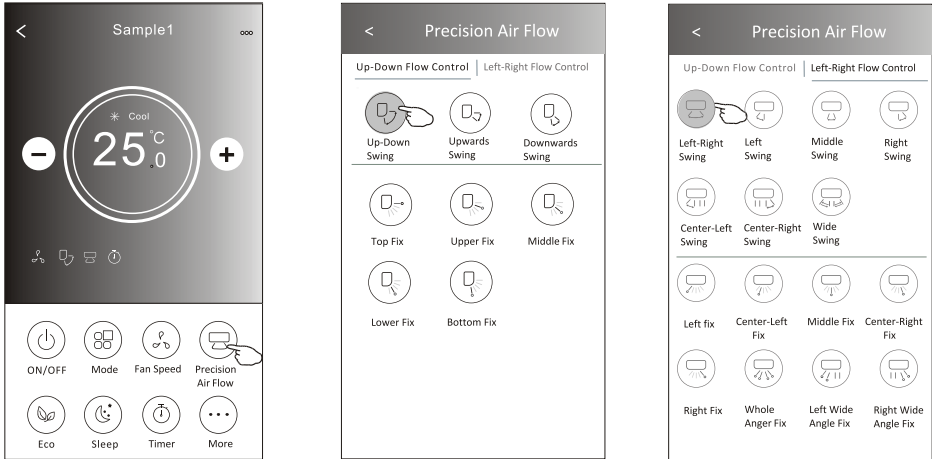


## PART 3. AIR CONDITIONER CONTROL

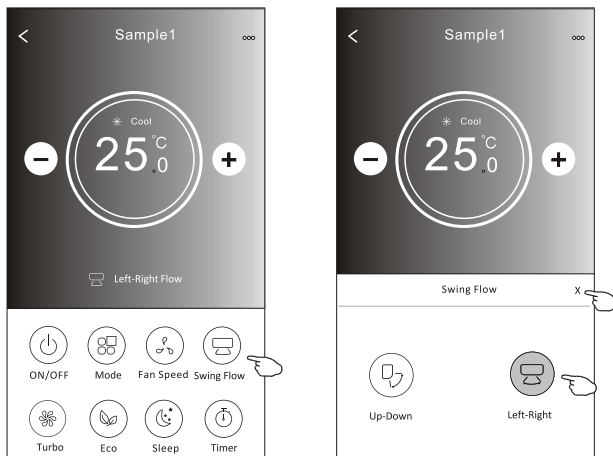
### 2.4. AIR FLOW CONTROL

1. Tap the Precision Air Flow button or Swing Flow button.
2. Choose your desired air flow and tap it.
3. Tap the X button to back to the main control screen.
4. The selected air flow indicator will appear on the screen.

**NOTE:** For some models without auto Left-Right wind, If you active it, you will hear a beep, but no any actions.



**NOTE:** The Main control screen and Air Flow screen may appear slightly different, depending on the air conditioner model. Example as below:

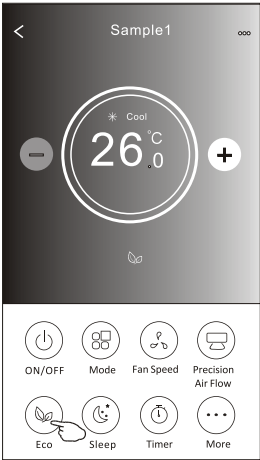
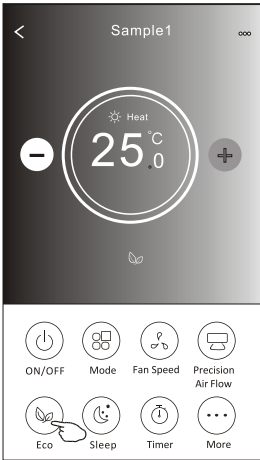


PART 3. AIR CONDITIONER CONTROL

2.5. ECO FUNCTION

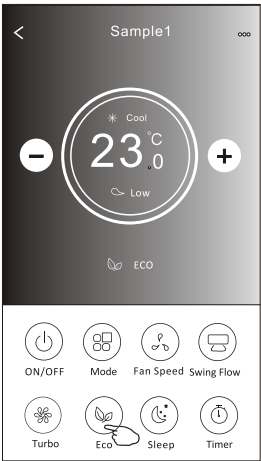
- 1. For Eco function, just tap the button to activate the function, the button will be lighting and the indicator will appear on the screen.
- 2. Tap again to disable the function.
- 3. Temperature controlled for some air conditioner model:  
In Cooling mode, the new setting temperature will  $\geq 26^{\circ}\text{C}$ .  
In heating mode, the new setting temperature will  $\geq 25^{\circ}\text{C}$ .

**NOTE:** ECO is disabled on Fan/ Dry/Auto mode.



Mode	ECO enabled
Cool	Yes
Fan	-
Dry	-
Heat	Yes
Auto	-

**NOTE:** The Main control screen and ECO control method may appear slightly different, depending on the air conditioner model. Example as below:



**NOTE:** ECO is disabled on Turbo/Sleep mode too for some air conditioner model.

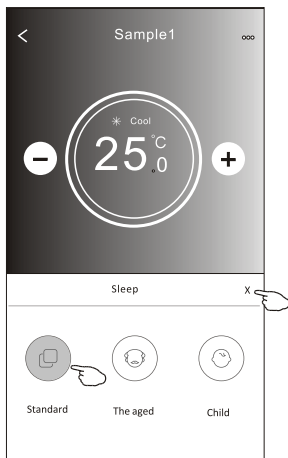
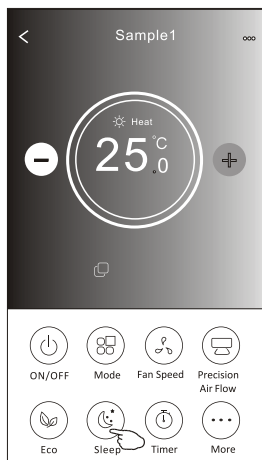


## PART 3. AIR CONDITIONER CONTROL

### 2.6. SLEEP FUNCTION

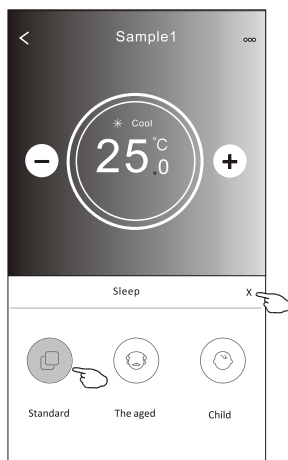
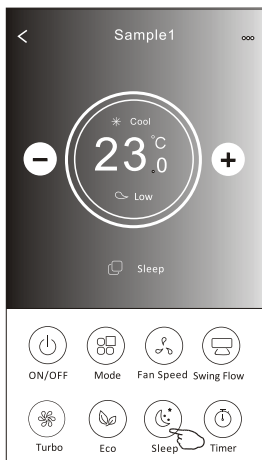
1. Tap the Sleep button.
2. Choose your desired sleep mode and tap it.
3. Tap the X button to back to the main control screen.
4. The selected sleep mode indicator will appear on the screen.

**NOTE:** Sleep is disabled on Fan/ Dry/Auto mode.



Mode	Sleep enabled
Cool	Yes
Fan	-
Dry	-
Heat	Yes
Auto	-

**NOTE:** The Main control screen may appear slightly different ,depending on the air conditioner model. Example as below:



**NOTE:** Sleep is disabled on Turbo/Sleep mode too for some air conditioner model.

PART 3. AIR CONDITIONER CONTROL

2.7. TIMER (ON) SETTING

- 1. Tap the Timer button.
- 2. Tap + in the upper right corner of the Timer main screen.
- 3. Choose the Time/Repeat/Switch OFF then tap Save.
- 4. The Timer (off) will appear on the Timer main screen.

<

Sample1

∞

-

Cool

25.0

+

🔊

🔄

🌬️

🔌

🔌

ON/OFF

🔄

Mode

🌬️

Fan Speed

🌬️

Precision Air Flow

🌿

Eco

🌙

Sleep

⌚

Timer

⋮

More

<

Timer

+

🕒

No Timer

<

Timer

+

1927

2028

21:29

2230

2331

Repeat

Monday....>

Switch

OFF>

Save

Cancel

Repeat

Confirm

Once

Monday

✓

Tuesday

✓

Wednesday

✓

Thursday

✓

Friday

✓

Saturday

Sunday

Cancel

Switch

Confirm

ON

OFF

Tap Switch > then slide the screen to choose ON and Confirm.

<

Timer

+

21:29

OFF, Weekday

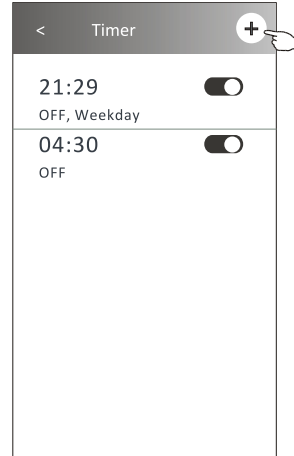
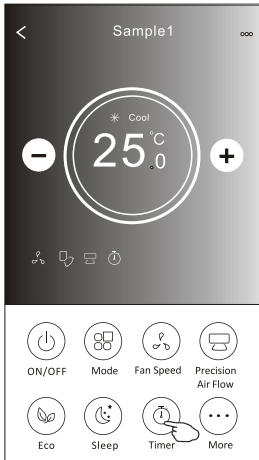
🔌

Tap Repeat > then tap your desired repeat days or Once, then tap Confirm your selection.

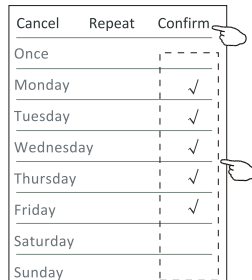
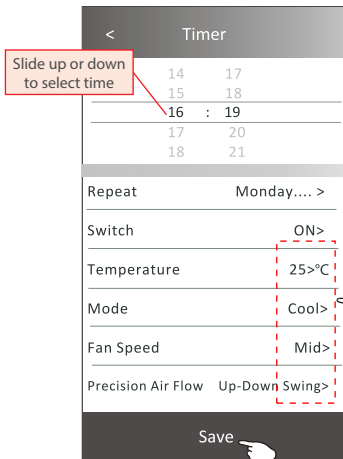
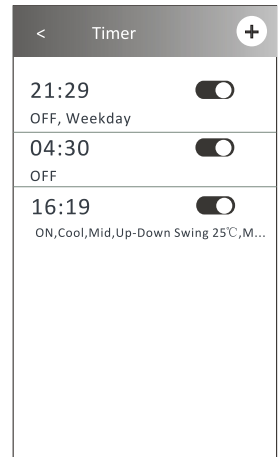
## PART 3. AIR CONDITIONER CONTROL

### 2.8. TIMER (OFF) SETTING

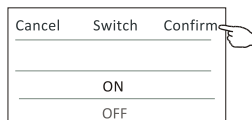
1. Tap the Timer button.
2. Tap + in the upper right corner of the Timer main screen.
3. Set the Time/Repeat Date/Switch(ON)/Temperature/Mode/Fan speed/Air Flow as your desired and then tap Save.
4. The timer will appear on the Timer main screen.



Tap Repeat > then tap your desired repeat days or Once, then tap Confirm your selection.



Tap Switch > then slide the screen to choose ON and Confirm.

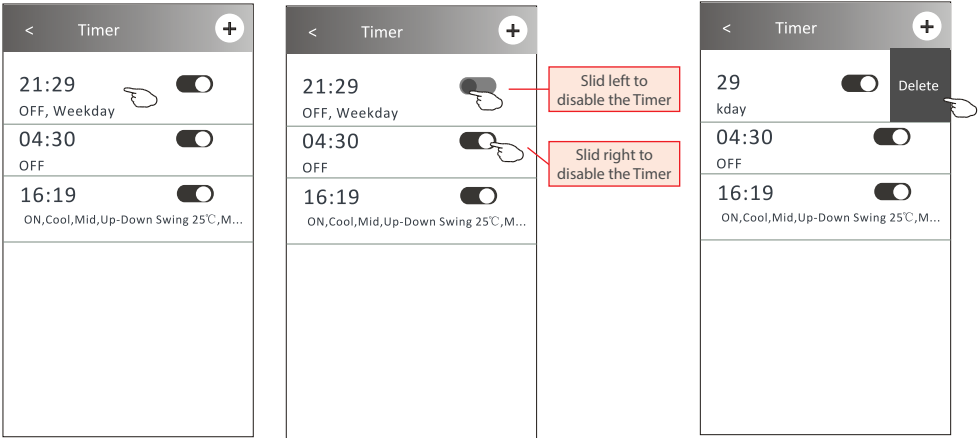


Tap Temperature/Mode/Fan Speed/ Air Flow > one by one then set as your desired as mentioned on the previous chapter and tap Confirm the setting.

PART 3. AIR CONDITIONER CONTROL

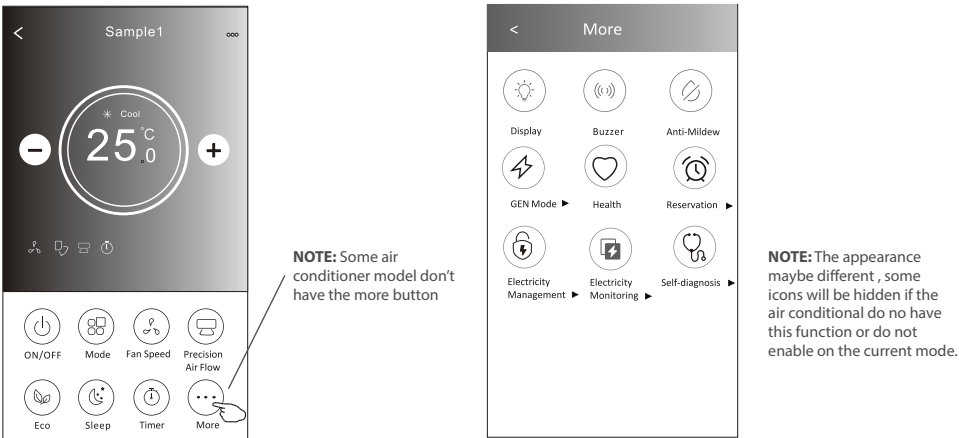
2.9. TIMER MANAGEMENT

- 1. Change the Timer setting:  
Tap anywhere of the timer list bar except the switch bar to get into the Timer setting screen, change the setting and then tap save.
- 2. Enable or Disable the Timer:  
Tap the left of the switch to disable the Timer.  
Tap the right of the switch to enable the Timer.
- 3. Delete the Timer:  
Slide the list bar of the Timer from right to left until Delete button appear, then tap delete.



2.10. MORE FUNCTIONS

- 1. Tap the More button to operate additional functions if it appears on the screen.



## PART 3. AIR CONDITIONER CONTROL

2. Tap the "Display" to switch on/off the indoor LED display.



Display

3. Tap the "Buzzer" to switch on/off the buzzing when operating through Wi-Fi APP.



Buzzer

4. Tap the "Anti-Mildew" button to activate the Anti-Mildew function, if it is available on the screen.  
After AC turning off, it will start drying, reduce residual moisture and prevent mould, after function finish, it will automatically turn off.



Anti-Mildew

5. Tap the Health button to switch on/off the healthy function, if it is available on the screen.  
It activate the antibacterial ioniser function. This function only for models with the ioniser generator.

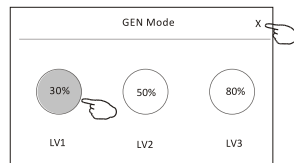


Health

6. Tap the "GEN Mode" button, if it is available on the screen.  
In this Mode, you can choose one of the three levels of current.  
The air conditioner will maintain proper current to save energy.



GEN Mode ►



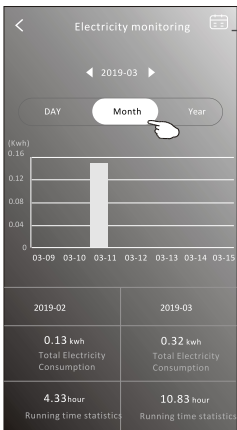
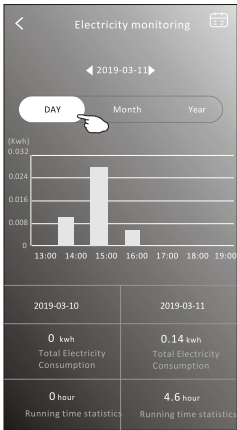
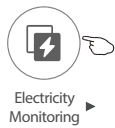
7. Tap the "Self-Cleaning" button, if it is available on the screen.  
Check the details of the Self-Cleaning function on User Manual.



Self-Cleaning

PART 3. AIR CONDITIONER CONTROL

8. Tap the “Electricity Monitoring” button if it is available on the screen.  
In this function, you can monitor the air conditioner electricity consumption.



You can tap this button to pop up the calendar then select the date.

9. Tap the “8°C Heat” button , if it is available on the screen.  
This function help keep the room temperature over 8°C.  
Check the details of the 8°C Heat function on User Manual.



8°C Heat

10. Tap the “Reservation” button , if it is available on the screen.  
You can set the time, repeat day, temperature, mode, fan speed, air flow as you desired and then tap “Save” to activate the function.  
The air conditioner will automatically reach your settings at the appointment time.



Reservation	
14	17
15	18
16	19
17	20
18	21
Repeat setting	Monday....>
Temperature	25°C>
Mode	Cool>
Fan Speed	Mid>
Precision Air Flow	Up-Down Swing>
Save	

16:19:00

ON,Cool,Mid,Up-Down Swing 25°C,M...

After the reservation is set up, the air conditioner will automatically reach your set requirement at your appointment time.

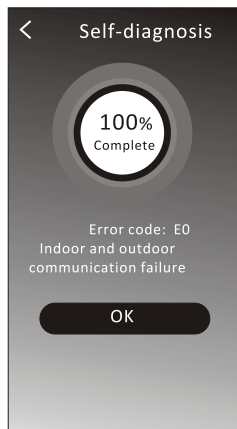
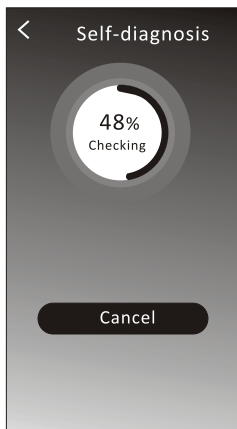
## PART 3. AIR CONDITIONER CONTROL

11. Tap the Self-diagnosis button, if it is available on the screen.

The air conditioner will automatically diagnosis itself and indicate the Error code and the problem instructions if possible.



Self-diagnosis ▶

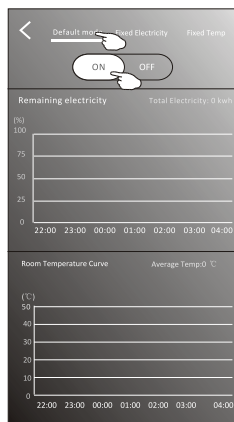


12. Tap the "Electricity Management" button if it is available on the screen.

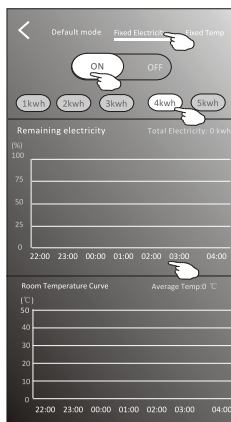


Electricity Management ▶

Fix Mode	Air conditioner actions
Default mode	AC auto operate. Ultimate smart energy saving, have a comfortable and cooling sleep at night
Fixed Electricity	AC auto operates per the fixed electricity power, the user can select the fixed electricity power every night.
Dry	AC auto operates per the fixed temp, the user can select different temp every night.



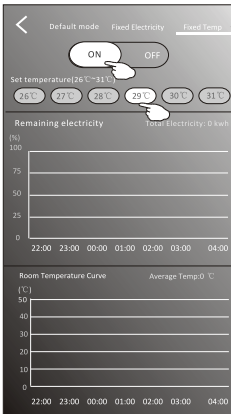
1. Choose Default mode
  2. Switch ON
- The other 2 modes will be deactivate.



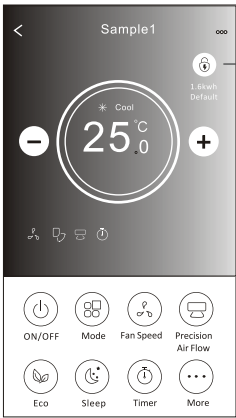
1. Choose Fix Electricity mode
  2. Select the fixed power consumption
  3. Switch ON
- The other 2 modes will be deactivate.

The time can be slide left or right to show more list.


PART 3. AIR CONDITIONER CONTROL



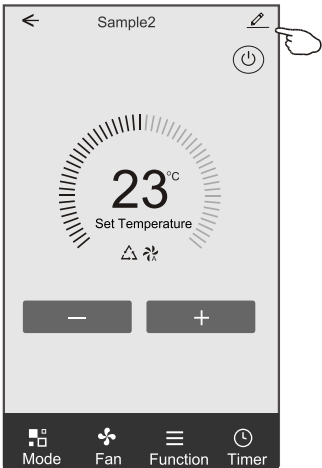
- 1. Choose Fix Temp mode
  - 2. Select the fixed temperature
  - 3. Switch ON
- The other 2 modes will be deactivate.



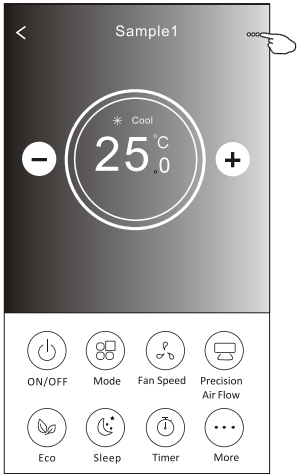
3. DEVICE DETAILS AND DEVICE MANAGEMENT

Tap  on control form1 or tap ... on control form2 , get into the device details screen. Here you can get some useful information and sharing the device to other accounts. Check the following pictures and instructions carefully.

Control form 1

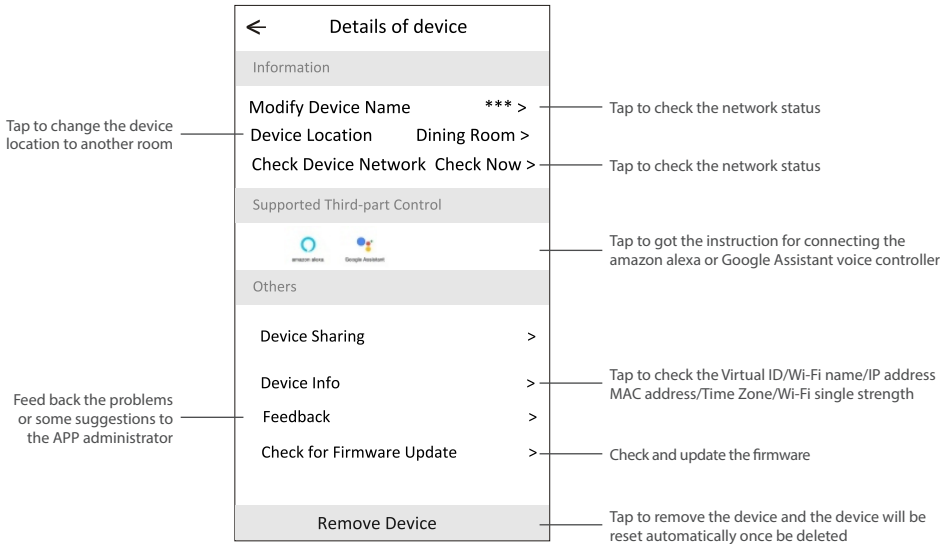


Control form 2



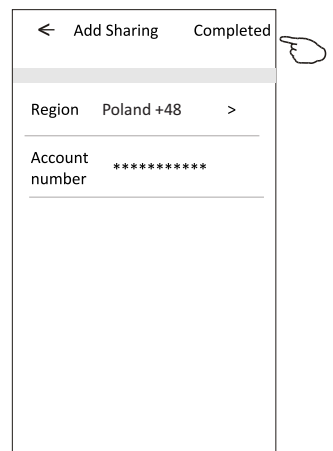
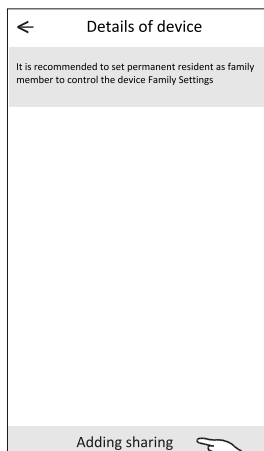
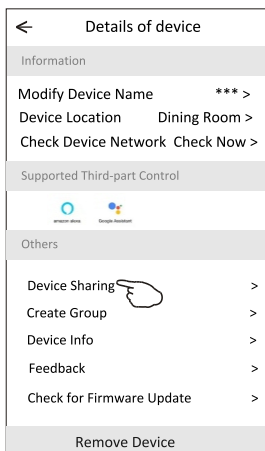


## PART 3. AIR CONDITIONER CONTROL

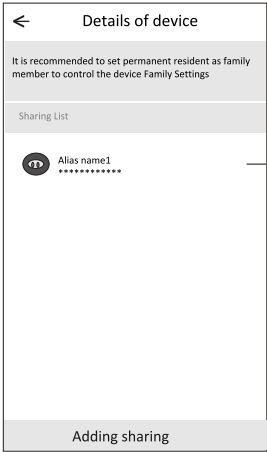


### How to share the devices to other accounts?

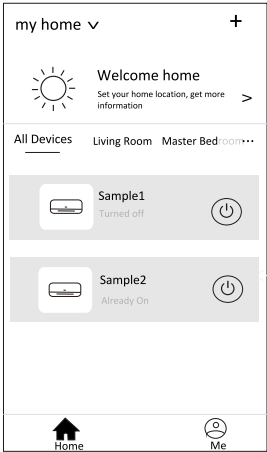
1. Tap "Device Sharing" and pop up Device Sharing screen.
2. Tap "Add Sharing".
3. Select the region and enter the account which you want to sharing.
4. Tap "Completed", the account will appear on your sharing list.
5. The received sharing members should hold pressing the home screen and slide down to refresh the device list, the device will appear on the device list.



PART 3. AIR CONDITIONER CONTROL



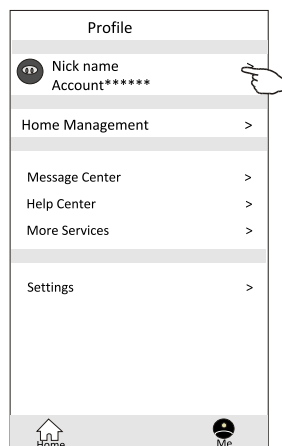
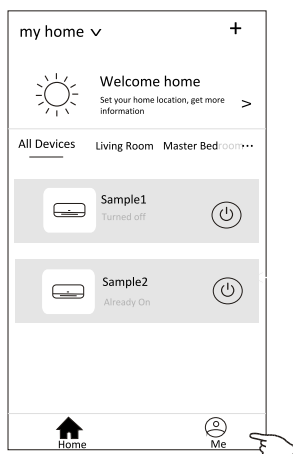
old the bar about 3s then you can delete the sharing account.



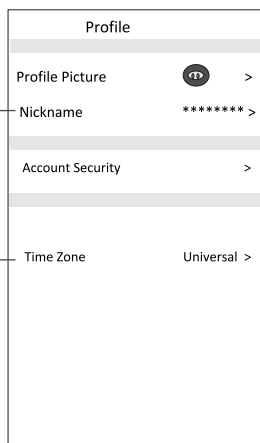
Hold on and slide down to refresh the device list

## PART 4. ACCOUNT MANAGEMENT

## 1. ACCOUNT PROFILE SETTING

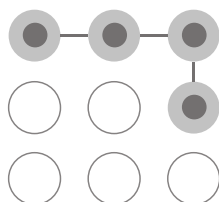


Change the nick name of your account

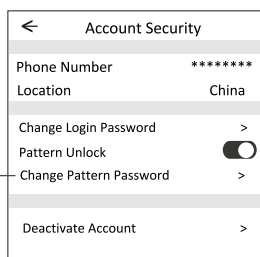


Select a picture for the account from local album

Select the time zone



Set a pattern password for launching the APP



Change the password like reset password on page 10

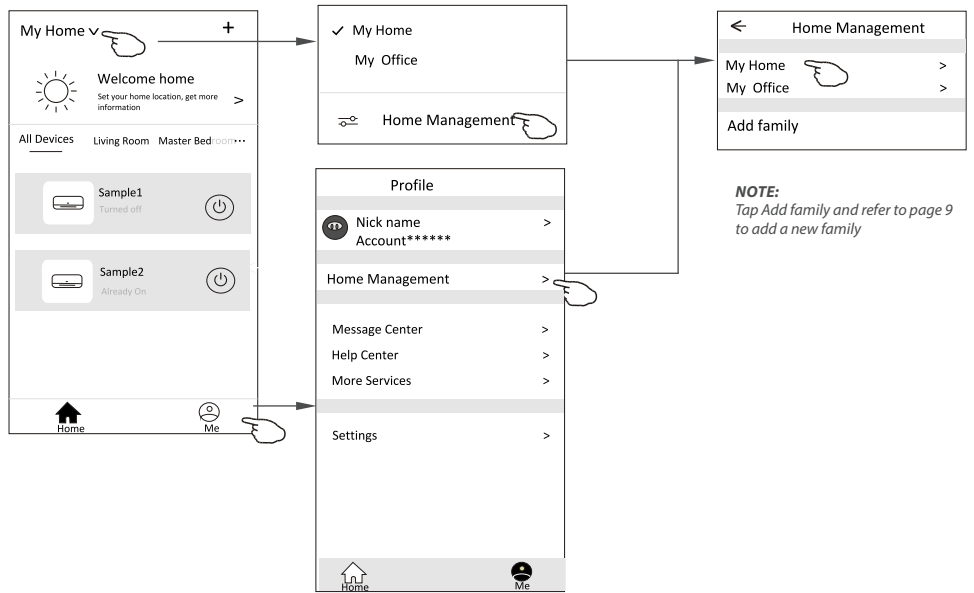
Tap the switch to enable or disable the Pattern password

Please carefully to deactivate the account for all data will be deleted.

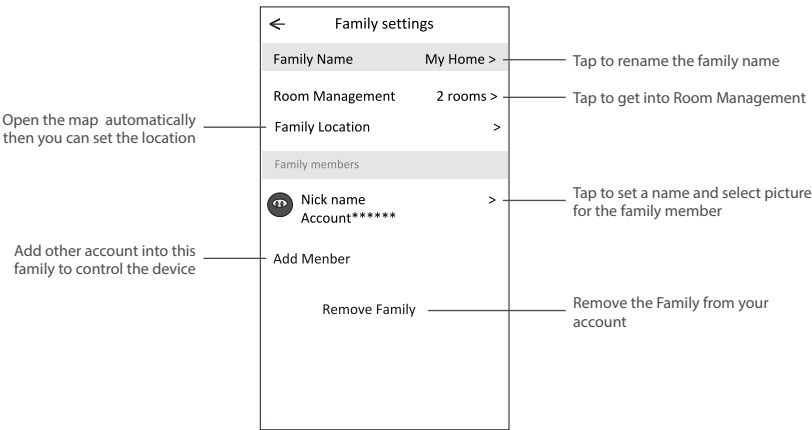
PART 4. ACCOUNT MANAGEMENT

2. HOME(FAMILY) MANAGEMENT

- 1. Tap the name of home at the left upper corner of the Home Screen and select the Home Management.  
Or tap Me and tap Home Management.
- 2. Tap one of the families in the family list and get into Family Settings screen.



- 3. Set the family as the following indicators.



## PART 5. TROUBLE SHOOTING

Description	Analysis of cause
<b>Air conditioner can't be configured successfully</b>	<ol style="list-style-type: none"> <li>1. Check the mobile connected Wi-Fi address and password is correct;</li> <li>2. Check the air conditioner under configuration status;</li> <li>3. There are any firewall or other restrictions have been set or not;</li> <li>4. Check the router work normally;</li> <li>5. Make sure air conditioner, router and mobile work within signal scope;</li> <li>6. Check router shielding App or not;</li> </ol>
<b>Mobile can't control air conditioner</b>	<p>Software display: Identification failed, It means the air conditioner has been reset, and the mobile phone lost control permission. You need to connect Wi-Fi to get permission again. Please connect the local network and refresh it. After all still can't work, please delete air conditioner and wait its refresh.</p>
<b>Mobile can't find air conditioner</b>	<p>Software display: Air conditioner out of line. Please check network working;</p> <ol style="list-style-type: none"> <li>1. The air conditioner has been reconfiguration;</li> <li>2. Air conditioner out of power;</li> <li>3. Router out of power;</li> <li>4. Air conditioner can't connect to router;</li> <li>5. Air conditioner can't connect to network through the router (under remote control mode);</li> <li>6. Mobile can't connect to router(Under local control mode);</li> <li>7. The mobile phone can't connect to network (under remote control mode).</li> </ol>

## IMPORTANT NOTICES

1. For technical update, there is maybe deviation of the actual items from what is on the manual. We express our apologies. Please refer to your actual product and APP.
2. Smart air conditioner APP can be altered without notice for quality improvement and also be deleted depending on the circumstances of manufacturing firms .
3. In case Wi-Fi signal strength is weakened, smart App may be disconnected. So make sure the indoor unit near to wireless router.
4. DHCP server function should be activated for wireless router.
5. The internet connection may fail because of a firewall problem. In this case, contact your internetservice provider.
6. For smart phone system security and network setting, make sure Smart air conditioner APP is trusted.

[illegible]



Installer stamp

**[www.rotenso.com](http://www.rotenso.com)**  
email: [info@rotenso.com](mailto:info@rotenso.com)