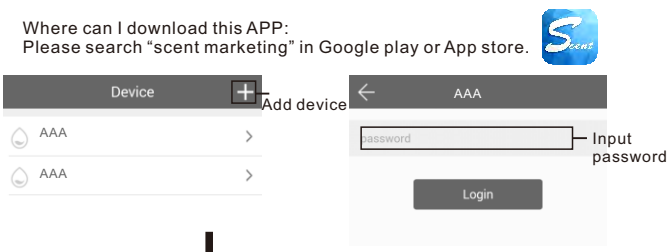
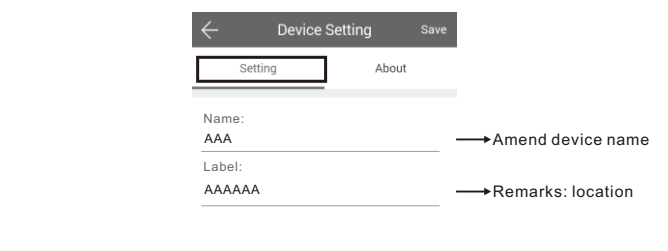


APP instructions

Where can I download this APP:
Please search "scent marketing" in Google play or App store.



↓




Delete working period ← X + → Add working period

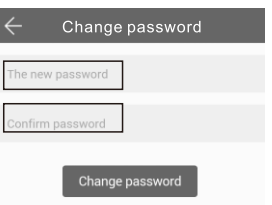
07:00-21:00 Grade: 09
Mon Tue Wed Thur Fri Sat Sun

(PS: There are 5 working periods available to be set.)

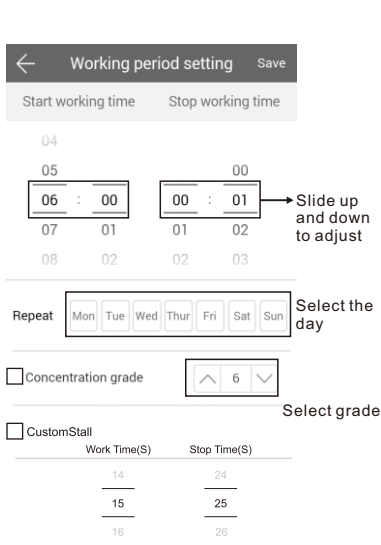
Amend password



↓



If you forget the password, please press the reset button to restore the factory settings. The factory settings password is 8888.

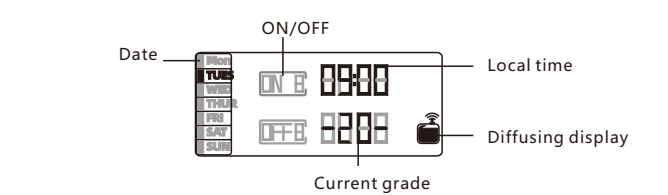


Slide up and down to adjust

Select the day

Select grade

Time setting



ON/OFF

Date

Local time

Diffusing display

Current grade

Power on/off
Connect power supply, power on with a sound "beep", and the screen displays initial time and current grade. The screen will be off when disconnect the power.

Fan on/off
Touch ▲ button (3s) to turn on fan, touch ▼ button (3s) to turn off fan.

Auto-lock and un-lock
Button will be locked automatically if there is no any further manual manipulation in 60s; Touch SET (about 5s) comes out with sound "beep" and screen lights on to unlock machine.

Local time setting
Touch SET button (about 3s) till a sound "beep" comes out for day setting; touch ▲ or ▼ to adjust the day; touch ENT button for local time setting, touch ▲ or ▼ to adjust the time (Figure 1)

Concentration grade setting
There are 20 grades available. Touch ▲ to increase grade, touch ▼ to decrease grade(Figure 2).

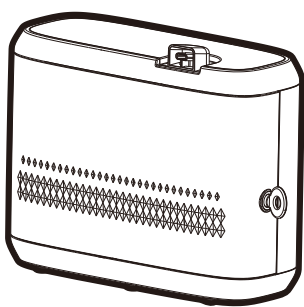
Work time period setting
There are 5 working periods available to be set every day (Figure 3).
Touch SET button to set working period (ON1) , touch ▲ or ▼ to choose working period (1-5); touch ENT button for the working period switch, touch ▲ or ▼ to choose ON or OFF, touch ENT button again to move to the operation time, touch ▲ or ▼ to adjust number.
Touch ENT again for grade. Next touch ENT to choose the day (MON), touch ▲ button to turn on the working period (ON1) (Figure4), touch ▼ button to turn off the working period (OFF1) (Figure5).
Touch ENT to move to the next day and repeat the steps for TUES to SUN.
Once finish, touch SET to confirm and exit, Repeat the same setting steps of ON1 for ON2, ON3 ON4 and ON5. PS:Grade display with "-Cu-" is for customized grade set by APP only(Figure6).
Machine doesn't work when the start working period is as same as stop working time

Working time period	00:00 00:00	00:00 00:00	00:00 00:00	00:00 00:00	00:00 00:00
Mon	ON/OFF	ON/OFF	ON/OFF	ON/OFF	ON/OFF
Thues	ON/OFF	ON/OFF	ON/OFF	ON/OFF	ON/OFF
Wed	ON/OFF	ON/OFF	ON/OFF	ON/OFF	ON/OFF
Thur	ON/OFF	ON/OFF	ON/OFF	ON/OFF	ON/OFF
Fri	ON/OFF	ON/OFF	ON/OFF	ON/OFF	ON/OFF
Sat	ON/OFF	ON/OFF	ON/OFF	ON/OFF	ON/OFF
Sun	ON/OFF	ON/OFF	ON/OFF	ON/OFF	ON/OFF

(PS: The first working period is factory defaults with start working time 07:00 and stop working time 19:00, Grade1, the rest are all with 00:00.)

PRODUCT MANUAL

SCENT MARKETING
A305S/M/L



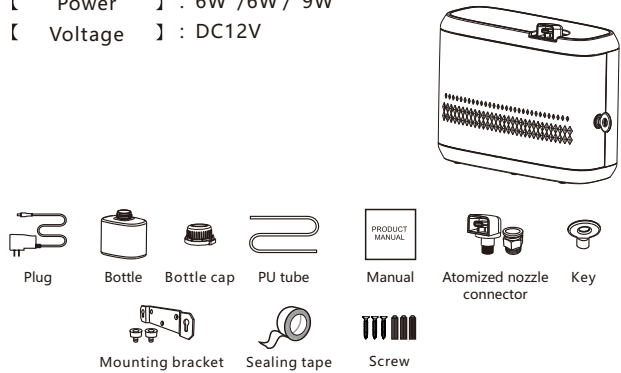
Concentration and Consumption

Grade	work(s)	intervals(s)	Consumption(ml/h)		
			A305S-BLE	A305M-BLE	A305L-BLE
G1	15s	300s	0.10	0.1	0.2
G2	15s	150s	0.14	0.2	0.3
G3	20s	120s	0.18	0.3	0.5
G4	20s	85s	0.22	0.4	0.6
G5	25s	80s	0.26	0.5	0.8
G6	30s	75s	0.30	0.6	0.9
G7	30s	60s	0.34	0.7	1.0
G8	30s	50s	0.38	0.8	1.2
G9	30s	40s	0.45	0.9	1.3
G10	30s	33s	0.50	1.0	1.5
G11	33s	30s	0.55	1.1	1.8
G12	40s	30s	0.60	1.2	2.0
G13	50s	30s	0.65	1.3	2.3
G14	60s	30s	0.70	1.4	2.5
G15	75s	30s	0.75	1.5	2.8
G16	80s	25s	0.80	1.6	3.0
G17	85s	20s	0.85	1.7	3.3
G18	120s	20s	0.90	1.8	3.5
G19	150s	15s	0.95	1.9	3.8
G20	300s	15s	1.00	2.0	4.0
Cu	5-500s	5-500s			

▲ Up grade ▼ Down grade
Notice:1. Above date is base on test trial.
2. Consumption data is for reference only. Different fragrance may be coming with different consumption.

Specification

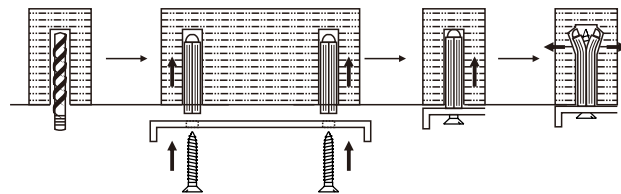
【Product Name】：Aroma diffuser
【Model】：A305S/ A305M/ A305L
【Coverage】：200m²/600m³ 400m²/1200m³ 800m²/2400m³
【Dimension】：295*222*112.5mm
【Bottle】：850ml
【Weight】：2.05kg 2.45kg 2.60kg
【Power】：6W /6W/ 9W
【Voltage】：DC12V



Usage of sealing tape:
1.Before replacing atomizing core, wrap sealing tape around atomized core thread about 3-5 turns to avoid air leakage;
2.Before connecting atomized connector, wrap sealing tape around atomized connector thread about 3-5 turns to avoid air leakage.

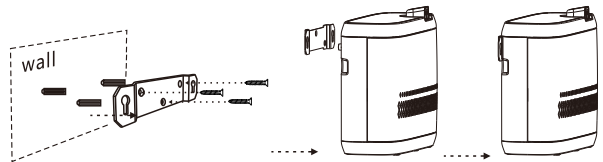
Installation

The method of using expansion bolts



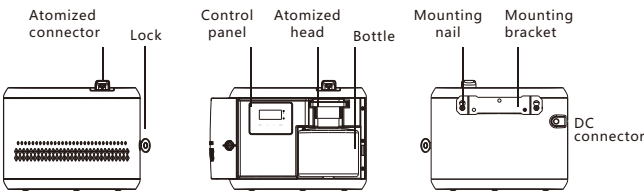
Drill the wall, insert the expansion tube into the hole, put the screw into the expansion tube and tighten it

Installation steps

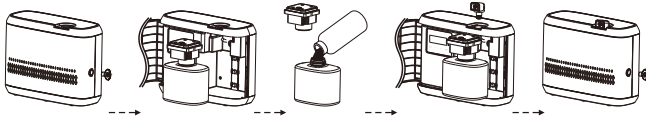


1.Aim at the position of the mounting bracket, then drill the hole in the wall and insert the expansion bolts into the hole in the wall;
2.Install the mounting bracket on the wall with screws, and finally hang the machine on the mounting bracket.

Overview



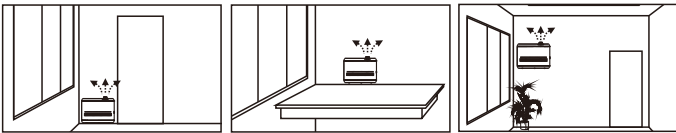
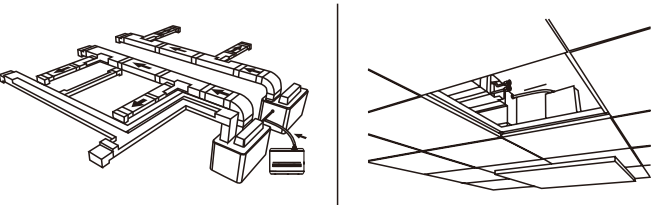
Instruction



1. Open the door by key
2. Unscrew the atomized nozzle, take out the bottle
3. Twist the bottle and fill essential oil
4. Put atomized head to bottle and screw the atomized nozzle
5. Finish time setting and lock machine

Direction

Idea for Hotels, Conference rooms, Malls, Exhibition halls, Major retailers, Bars, SPAs, Business places or anywhere you want a fragrance experience.



Caution

- Shall not modify, disassemble or repair the machine arbitrarily. Any failure happens, please contact technician in time.
- Shall not damage the power cord, force to bend, yank, heavy load, clip or reprocess.
- Shall not use damaged plug or unmatched with the socket;
- Shall not wet the machine or the plug;
- Shall not use overloaded power socket, wire or broken plug.
- Shall not touch the wire or product shell when thundering or/and lightening.
- Shall not disassemble the machine when it is under operating.

Warning

- Please keep the machine vertical. Tilt or lie flatly may cause oil over flow. The machine efficiency may be affected.
- Shall not modify, disassemble or repair the machine if you are not a technician. If any failure happens to the machine, please contact our technical personnel.
- The machine is stop during off work time period, even the Atomization display is on
- The button is invalid and no display on screen when machine locked
- If the display is cluttered, freezes or other problem, please restart machine to reset to defaults(Method: Press ENT button and hold on about 5 seconds till hear a sound "beep")



Troubleshooting

Before asking to have the machine repaired, please try to diagnose the problem first following to below instructions.

Breakdown	Solution
Does not diffuse	-Check whether the mode you choose is correct or not. -Check if the machine is during "Non-Working period" -Air pump may be damaged, change a new one. -Check whether the tube is loose or not
Weak diffuse	-The atomizing core is blocked, clean by alcohol or change a new component. -Check whether the gasket is damage/loose or not. -Check whether the tube is loose or not
Oil leaking	-Check whether the bottle is loose or not -The gasket in the atomized head is damaged or
Oil sprinkle	-The atomized head is damaged, change a new one -The machine is tilted or lie down, keep the machine
Abnormal noise	-The air pump is loose, retighten the pump -The air pump is damaged, change a new one.

Equipment cleaning

The machine needs to be cleaned when below situations happen:

- You're about to change to another kind of essential oil.
- The atomization volume becomes weak.

Cleaning steps:

- Pull out the atomized head, loose the bottle.
- Find a larger container and fill the industrial alcohol up, then soak the atomized head and the bottle for 5-10mins.
- Airing the atomized head and the bottle.

签字受控:

尺寸:297*210mm
材质:128g铜版纸

FCC Warning

This device complies with Part 15 of the FCC Rules. Operation is subject to the following two conditions:

(1) This device may not cause harmful interference, and (2) this device must accept any interference received, including interference that may cause undesired operation.

NOTE 1: This equipment has been tested and found to comply with the limits for a Class B digital device, pursuant to part 15 of the FCC Rules. These limits are designed to provide reasonable protection against harmful interference in a residential installation. This equipment generates, uses and can radiate radio frequency energy and, if not installed and used in accordance with the instructions, may cause harmful interference to radio communications. However, there is no guarantee that interference will not occur in a particular installation. If this equipment does cause harmful interference to radio or television reception, which can be determined by turning the equipment off and on, the user is encouraged to try to correct the interference by one or more of the following measures:

- Reorient or relocate the receiving antenna.
- Increase the separation between the equipment and receiver.
- Connect the equipment into an outlet on a circuit different from that to which the receiver is connected.
- Consult the dealer or an experienced radio/TV technician for help.

NOTE 2: Any changes or modifications to this unit not expressly approved by the party responsible for compliance could void the user's authority to operate the equipment.

The device has been evaluated to meet general RF exposure requirement.

CE Caution

Use the product in the environment with the temperature between -10°C and 50°C; Otherwise, it may damage your phone. It can be operated under 2000m. For the following equipment:

Product Name: Aroma diffuser

Model: A305

Guangzhou Chiyang Scent Technology Co., LTD. hereby declares that this [Name: Aroma diffuser, Model: A305] is in compliance with the essential requirements and other relevant provisions of Directive 2014/53/EU.



This product can be used across EU member states.

CAUTION: RISK OF EXPLOSION IF BATTERY IS REPLACED BY AN INCORRECT TYPE.
DISPOSE OF USED BATTERIES ACCORDING TO THE INSTRUCTIONS.

Do not use other unauthorized chargers power supply for charging.

Do not use the product in environment below -10°C or above 50°C for charging.

Bluetooth	
Support Standard:	802.15.1
Frequency Range:	2402-2480MHz
Max. RF Output Power:	1.87dBm (EIRP)
Type of Modulation:	GFSK
Data Rate:	1Mbps
Quantity of Channels	40