

#### APPLICATION

Today's ever-changing water quality issues demand that point-of use water treatment systems become an essential component of equipment applications. Because municipal water treatment facilities are designed to reduce mainly biological contaminants, they do not decrease contaminants that affect the performance of water dependent equipment. The Watts HS-Series water treatment systems are designed specifically for use on applications found throughout the healthcare industry, such as point-at-use steam generators, instrument and cart washers. When used as suggested by the manufacturer, The Watts HS-Series water treatment systems significantly reduce or eliminate boiler scaling and instrument spotting.

#### BENEFITS

- Extends equipment life
- Provides 'spot-free' rinse water at a fraction of the cost of Deionization (DI water)
- Reduces or eliminates boiler scale
- Increases boiler heating element life and efficiency

#### EQUIPMENT FEATURES

- Complete pre-treatment
- Sediment filtration removes dirt, sand, and rust
- KDF media filter reduces iron
- Carbon filtration removes chlorine and other VOCs
- TFC reverse osmosis membrane reduces up to 99% of TDS
- Complete post-treatment
- PH adjusted
- TDS balanced to ensure proper conductivity of water
- 1-year warranty
- Factory performance tested and sanitized
- UL listed controls

#### SYSTEM PERFORMANCE

When used as suggested by the manufacturer, the Watts HS-Series water treatment systems eliminate up to 99% of the following contaminants:

- Total Dissolved Solids(TDS)
- Volatile Organic Chemicals
- Hardness(CaCO<sub>3</sub>)
- Chlorine additives

**Note Limitation:** Not intended for drinking water.

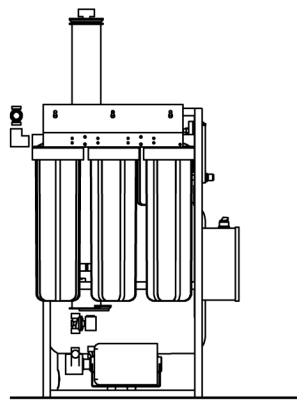
## **HS-2400** **Water Treatment System** **FT# 61301604725** **PT# 61301605526**



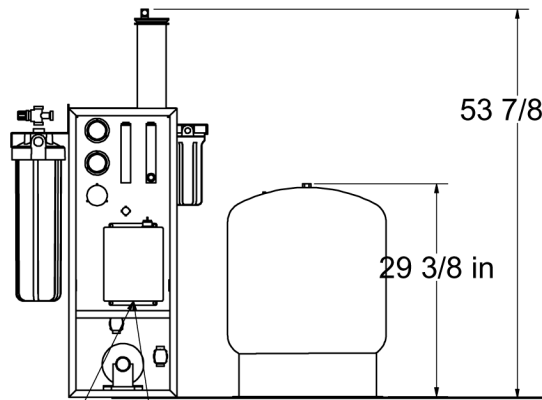
#### WARRANTY

Watts HS-Series water treatment systems are warranted for One year. Labor for repairs are provided for the first 90/days following equipment installation and start up. Warranty repairs are performed Monday-Friday from 8:00a.m. - 5:00p.m., Excluding national holidays.

To order an HS-Series Water Treatment System or for more information, please call:  
Phone: 800-950-9912  
Fax: 800-950-2570  
Getinge USA Inc,  
1777 East Henrietta Rd.  
Rochester, NY 14623



115VAC  
10A  
60Hz  
(14/3 wire, plug provided)



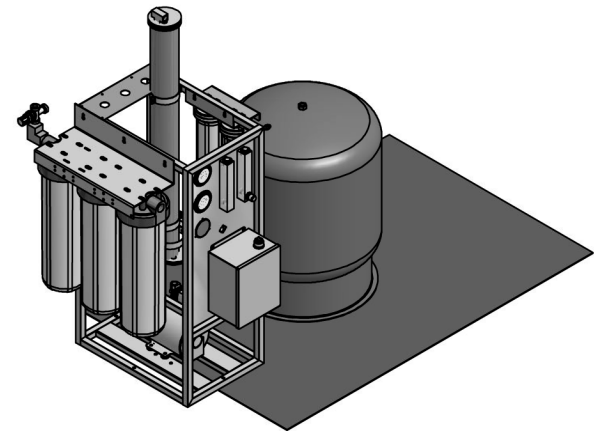
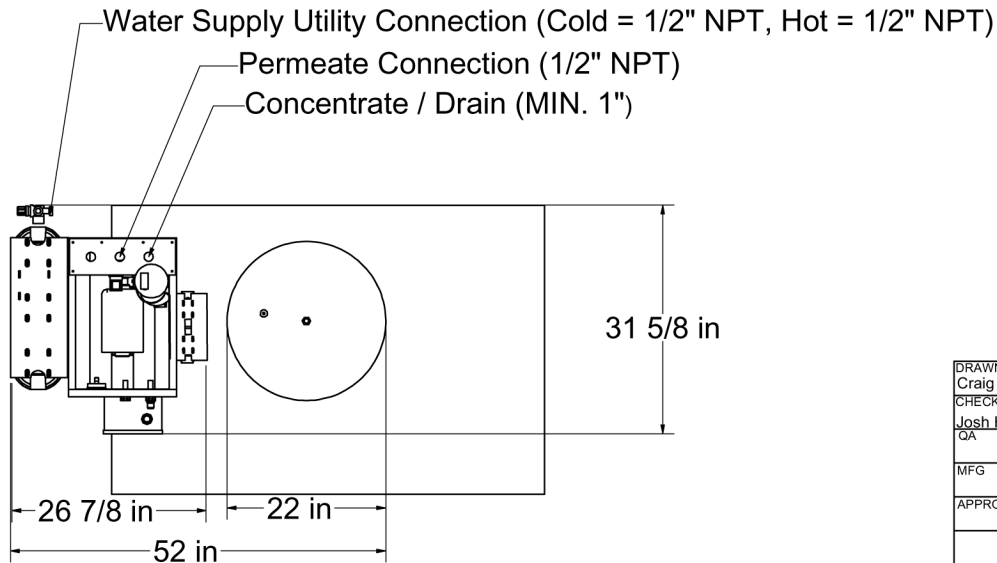
(Optional)  
230VAC  
4.9A  
60Hz  
(14/3 wire, plug not provided)

53 7/8 in

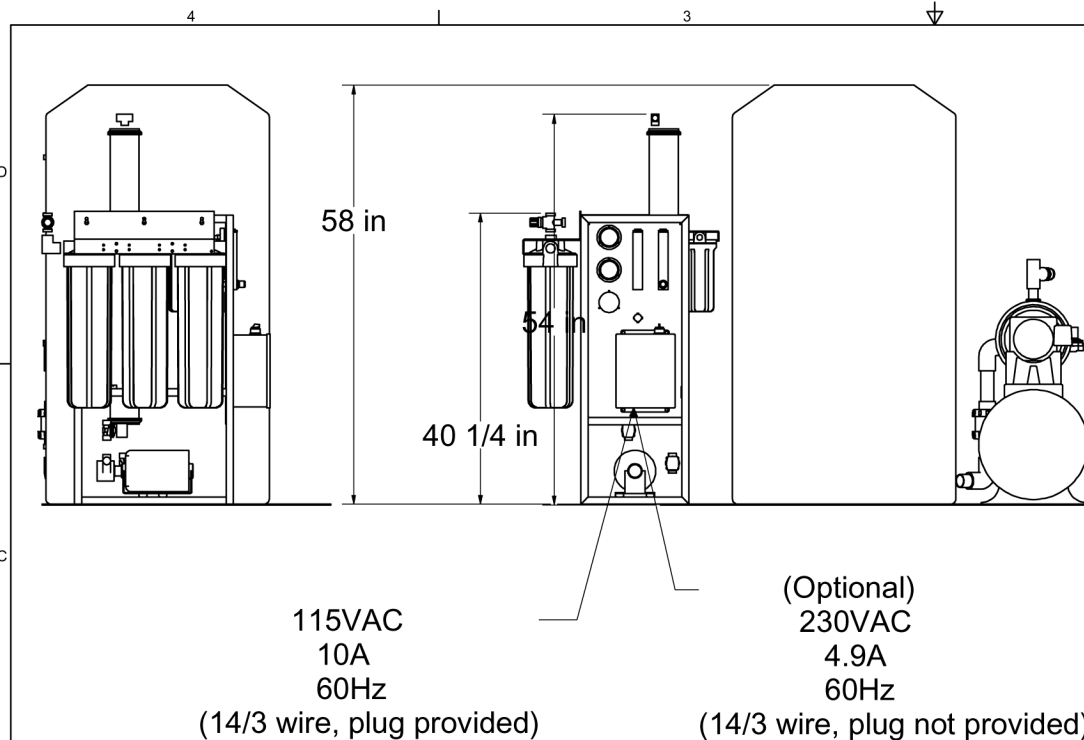
29 3/8 in

#### NOTES:

- 1) **INLET WATER:** Designed to handle potable water up to 2000 ppm TDS; hardness 14 grains max.
- 2) Permeate water will have 5 to 50 ppm TDS.
- 3) **WATER TEMPERATURE:** 35 - 100 deg F
- 4) **WATER PRESSURE:** 30 - 85 psig. A pressure regulator P/N 134030 will be required if over 85 psig.
- 5) **MEMBRANE RECOVERY RATE:** 1 to 1 or better.
- 6) Inlet water to be tempered to 70 deg F with supplied blending valve.
- 7) **CODES:** UL & CSA 508A
- 8) First year preventative maintenance kit is included (P/N 501054)
- 9) Minimum 18 inches service clearance on sides.
- 10) Minimum 40 inches service clearance on top.
- 11) **FLOOR SINK DRAIN:** 1-1/4" dia. within 10' of processor.
- 12) **APPROVED PIPING MATERIAL:** Schedule 80 PVC for washer applications and "L" copper for boiler feed applications.
- 13) **PRETREATMENT:** 20" Sediment 5 micron (P/N 204019 - Qty 1), 20" Carbon Block 10 micron (P/N 201012 - Qty 1), 20" GAC/KDF (P/N 201018 - Qty 1)
- 14) **POST TREATMENT:** 10" Calcite 32 oz (P/N 107016 - Qty 2)

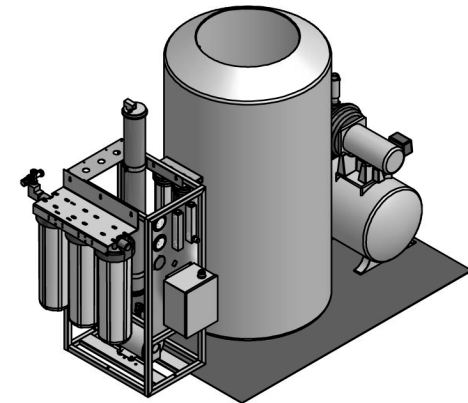
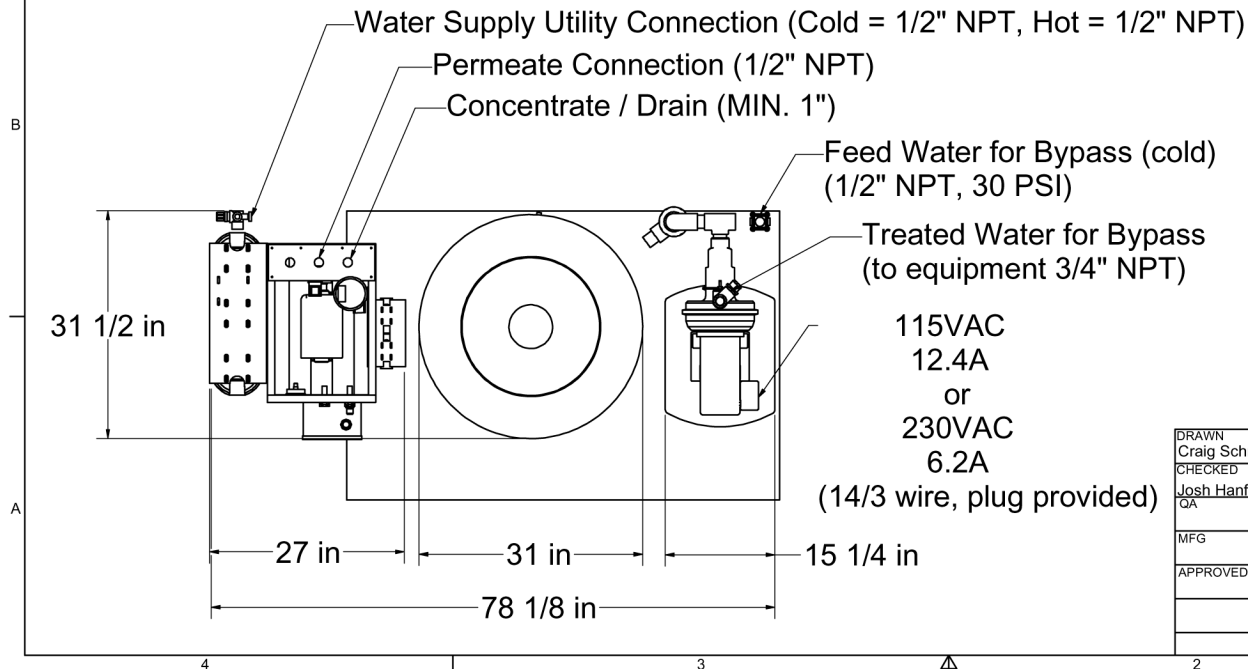


DRAWN Craig Schmitt	4/10/2003	Watts Pure Water, Phoenix, AZ USA	
CHECKED Josh Hanford	12/16/2003	TITLE	
QA		<b>HS-2400PT</b>	
MFG			
APPROVED		SIZE C	DWG NO 501621
		SCALE	REV 01/02/2004
			SHEET 1 OF 1



#### NOTES:

- 1) **INLET WATER:** Designed to handle potable water up to 2000 ppm TDS; hardness 14 grains max.
- 2) Permeate water will have 5 to 50 ppm TDS.
- 3) **WATER TEMPERATURE:** 35 - 100 deg F
- 4) **WATER PRESSURE:** 30 - 85 psig. A pressure regulator P/N 134030 will be required if over 85 psig.
- 5) **MEMBRANE RECOVERY RATE:** 1 to 1 or better.
- 6) Inlet water to be tempered to 70 deg F with supplied blending valve.
- 7) **CODES:** UL & CSA 508A
- 8) First year preventative maintenance kit is included (P/N 501054)
- 9) Minimum 18 inches service clearance on sides.
- 10) Minimum 40 inches service clearance on top.
- 11) **FLOOR SINK DRAIN:** 1-1/4" dia. within 10' of processor.
- 12) **APPROVED PIPING MATERIAL:** Schedule 80 PVC for washer applications and "L" copper for boiler feed applications.
- 13) **PRETREATMENT:** 20" Sediment 5 micron (P/N 204019 - Qty 1), 20" Carbon Block 10 micron (P/N 201012 - Qty 1), 20" GAC/KDF (P/N 201018 - Qty 1)
- 14) **POST TREATMENT:** 10" Calcite 32 oz (P/N 107016 - Qty 2)



DRAWN Craig Schmitt	4/10/2003	Watts Pure Water, Phoenix, AZ USA	
CHECKED Josh Hanford	12/16/2003	TITLE	
QA		<b>HS-2400FT</b>	
MFG			
APPROVED		SIZE C	DWG NO 501622
		SCALE	REV 01/02/2004
			SHEET 1 OF 1

## **Model HS-2400-PT # 501621 Replacement Parts**

<b><u>Item #</u></b>	<b><u>Item Description</u></b>	<b><u>Qty Per unit</u></b>
61301605494	Processor Pump 330 GPH	1
61301605497	Processor Motor 3/4 HP	1
61301605488	Solenoid 1/2" FPT (24VAC)	2
61301605490	Feed Low Pressure Switch	2
61301605481	Valve Check 1/4" FPT Plastic	1
61301605475	Valve Check 1/4" FPT Brass	1
61301605485	Valve Needle 3/8" FPT	1
61301605476	Valve Check 1/2" FPT Brass	3
61301605544	Valve Ball 1/2"	1
61301605512	Guage 0-300 Gly. 1/4" Pnl. Mt.	2
61301605467	Vessel Clousure Kit 4"	1
61301605464	Membrane Filter 4X40	1
61301605502	Fuse 20 Amp	2
61301605507	Control Box Motor Relay 30 Amp	1
61301605506	Control Box Transformer	1
61301605508	Control Box Circuit Board	1
61301605504	Switch Contact Block	1
61301605535	24v Coil for Plastic Solenoid	1
61301605487	Plastic Soleniod Body 1/2"	1
61301605491	Tank Switch 40-60psi	1
61301605511	Gauge 0-100 psi Gly. 1/4" Pnl. Mt.	1
61301605451	Housing Filter 10" Standard	2
61301605448	Filter Calcite 10"	2
61301605452	O-Ring for Standard Housing	2
61301605461	Filter Sediment 5 micron 20" BB	1
61301605457	Filter Carbon Block 10 micron 20" BB	1
61301605459	Filter GAC/KDF 20" BB	1
61301605465	Housing Filter 20" BB	3
61301605469	O-Ring for 20" BB Housing	3
61301605484	Blending Valve 1/2"	1
61301605454	Wrench for Standard Housing	1
61301605535	Wrench for 20" BB Housing	1
61301605544	HS-2400-Processor PM Kit	1

## **Model HS-2400-FT # 501620 Replacement Parts**

<b><u>Item #</u></b>	<b><u>Item Description</u></b>	<b><u>Qty Per unit</u></b>
61301605494	Processor Pump 330 GPH	1
61301605497	Processor Motor 3/4 HP	1
61301605488	Solenoid 1/2" FPT (24VAC)	2
61301605490	Feed Low Pressure Switch	1
61301605481	Valve Check 1/4" FPT Plastic	1
61301605475	Valve Check 1/4" FPT Brass	1
61301605485	Valve Needle 3/8" FPT	1
61301605476	Valve Check 1/2" FPT Brass	1
61301605512	Guage 0-300 Gly. 1/4" Pnl. Mt.	2
61301605467	Vessel Clousure Kit 4"	1
61301605464	Membrane Filter 4X40	1
61301605502	Fuse 20 Amp	2
61301605507	Control Box Motor Relay 30 Amp	1
61301605506	Control Box Transformer	1
61301605508	Control Box Circuit Board	1
61301605504	Switch Contact Block	1
61301605535	24v Coil for Plastic Solenoid	1
61301605487	Plastic Soleniod Body 1/2"	1
61301605451	Housing Filter 10" Standard	2
61301605448	Filter Calcite 10"	2
61301605452	O-Ring for Standard Housing	2
61301605461	Filter Sediment 5 micron 20" BB	1
61301605457	Filter Carbon Block 10 micron 20" BB	1
61301605459	Filter GAC/KDF 20" BB	1
61301605465	Housing Filter 20" BB	3
61301605469	O-Ring for 20" BB Housing	3
61301605484	Blending Valve 1/2"	1
61301605454	Wrench for Standard Housing	1
61301605535	Wrench for 20" BB Housing	1
61301605509	Horizontal Reed Float	3
61301605479	Valve Check PVC 80 1 1/4"	1
61301605480	Valve Check PVC 40 1/2"	1
61301605478	Valve Check PVC 80 1"	1
61301605472	Tank for Repressurizer (RP-12)	1
61301605498	Injector for Repressurizer	1
61301605498	Pump/Motor for Repressurizer	1
61301605544	HS-2400-Processor PM Kit	1