

ARST-W

Keypad

120-277 V~ 50/60 Hz 0.25 A

### Lutron contact numbers

U.S.A. | Canada | Caribbean

1.844.LUTRON1 (24/7)

Mexico

+1.888.235.2910

Others

+1.610.282.3800

### Install with confidence

Use our mobile friendly self-paced installation tool.

[lutron.com/wiringwizard](http://lutron.com/wiringwizard)

### Find the right LED



[lutron.com/LEDfinder](http://lutron.com/LEDfinder)

### Important Notes

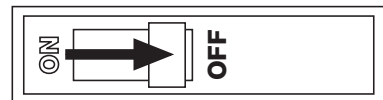
- Codes:** Install in accordance with all local and national electrical codes. Type 1 action independently mounted operating control. Pollution degree 2, Impulse voltage 4 kV.
- Environment:** Ambient operating temperature: 32 °F to 104 °F (0 °C to 40 °C), 0 to 90% humidity, non-condensing. Indoor use only.
- Wallplates:** Use only Lutron wallplates with these keypads. The mechanical design of the keypad may not be compatible with non-Lutron wallplates. Non-Lutron wallplates may not sit flush against the wall. Claro and Satin Colors wallplates are designed for best color match and clean aesthetic appearance. Do not paint controls, buttons, or wallplates.
- Cleaning:** For disinfecting keypad, please refer to [www.lutron.com/cleaning](http://www.lutron.com/cleaning).
- Wallboxes:** All keypads require a U.S. wallbox. 3 1/2 in (89 mm) deep recommended, 2 1/4 in (57 mm) deep minimum.
- RF Device Placement:** For reliable performance in a system, this device should be placed within 25 ft (7.6 m) of two additional compatible wireless devices, such as Athena or myRoom XC Sunnata products, Ketra, and the Clear Connect Gateway – Type X.
- System Programming:** Programming and activation (addressing) must be accomplished through the Lutron Designer software.

## 1 Turn power OFF at circuit breaker



#### WARNING: ELECTRIC SHOCK HAZARD.

May result in Serious Injury or Death. Turn off power at circuit breaker or fuse before installing.



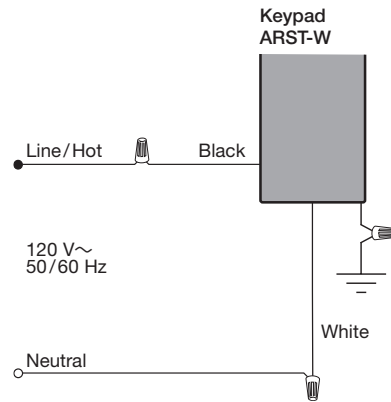
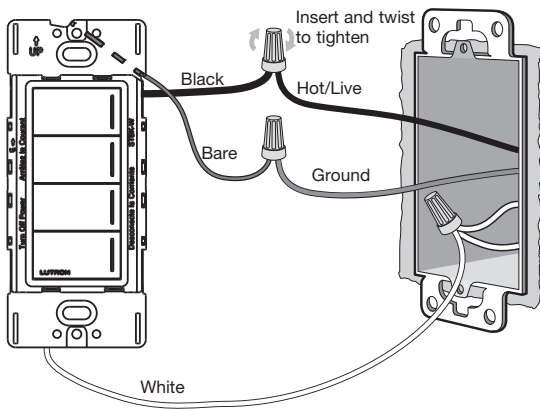
## 2 Prepare the wires

When making wire connections, follow the recommended strip lengths and combinations for the supplied wire nuts.

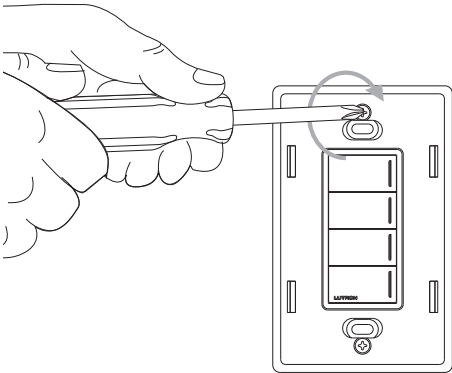
**Note:** Wire nuts provided are suitable **for copper wire only**.

AWG	
12 & 14 AWG (2.5 & 1.5 mm²)	3/8 in (10 mm)
18 AWG (0.75 mm²)	7/16 in (11 mm)

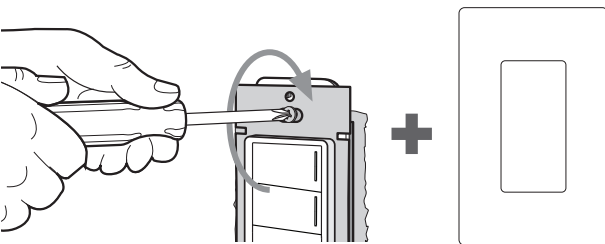
### 3 Wire the control



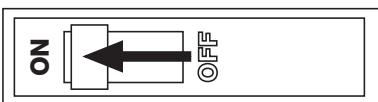
### 4 Mount the wallplate adapter



### 5 Mount the keypad and attach the wallplate



### 6 Turn power ON at circuit breaker



## 7 System setup

This keypad must be used in an Athena or myRoom XC system with a Clear Connect Gateway – Type X for control of dimmers, switches, and shades. Use the Lutron Designer software to setup the system (training is required to access the software).

For reliable performance in a system, Clear Connect-Type X devices must be placed within 25 ft (7.6 m) of two additional compatible Clear Connect-Type X devices. Clear Connect-Type X devices include, for example, Athena & myRoom XC Sunnata dimmer, switch, keypad and Athena & myRoom XC wireless processor / gateway devices. Companion devices are excluded from the list of compatible devices because they are not Clear Connect-Type X devices. Companion devices have wired communication with the main device.

### Troubleshooting

Symptom	Cause	Action
Status LEDs on the keypad don't light up when buttons on it are pressed.	Power not present at keypad	Circuit breaker OFF. Turn ON breaker.
	Incorrect wiring	Wire the keypad according to Step 3.
A specific dimmer, switch or shade/drapery is not controlled when a button is pressed on the keypad.	The dimmer, switch or shade/drapery is not assigned to the keypad	Refer to the Lutron Designer software and ensure the device is assigned to the keypad. Perform a transfer and make sure it is successful.
	Failure has occurred on the lamp(s) controlled by the dimmer/switch	Replace the lamp(s).
	Devices are out of range	Ensure this device is placed within 25 ft (7.6 m) of two additional compatible wireless devices, such as Athena or myRoom XC Sunnata products and the Athena or myRoom XC Clear Connect Gateway – Type X.
Dimmer, switch or shade/drapery does not go to the desired level or position when a button on the keypad is pressed.	The button was not programmed correctly	Refer to the Lutron Designer software and ensure the device is assigned to the keypad. Perform a transfer and make sure it is successful.
	Devices are out of range	Ensure this device is placed within 25 ft (7.6 m) of two additional compatible wireless devices; see Application Note #745 (P/N 048745) and the Athena or myRoom XC Clear Connect Gateway – Type X.
All status LEDs on the keypad flash when any button is pressed.	The keypad is in the Factory Settings mode and has not been configured to work in a system	Refer to the Lutron Designer software and ensure the device is assigned to that keypad. Perform a transfer and make sure it is successful.

**Note:** Refer to the system setup guide for additional troubleshooting suggestions.

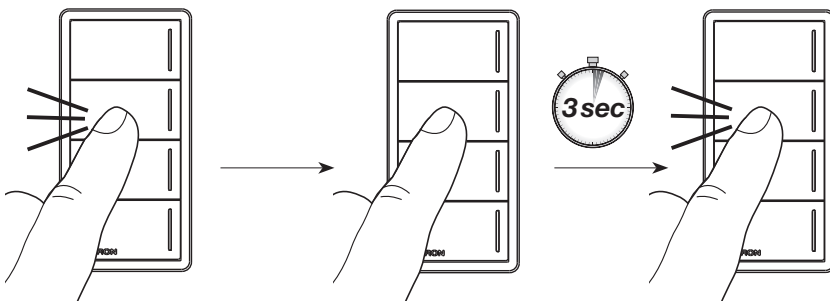
### Reset to factory settings

**Note:** Returning a keypad to its factory settings will remove the keypad from the system and erase all programming.

**Step 1:** Triple tap any button on the keypad (except raise/lower). DO NOT release after third tap.

**Step 2:** Keep the button pressed on the third tap until all the status LEDs start to flash slowly (approximately 3 seconds).

**Step 3:** Immediately release the button and triple tap the button again. The status LEDs on the keypad will flash quickly. The keypad has now been returned to its factory settings.



## FCC/IC/IFT Information

This device complies with part 15 of the FCC Rules and Innovation, Science and Economic Development Canada license-exempt RSS standard(s). Operation is subject to the following two conditions:

- (1) This device may not cause interference, and
- (2) This device must accept any interference, including interference that may cause undesired operation. Modifications not expressly approved by Lutron Electronics Co., Inc. could void the user's authority to operate this equipment.

NOTE: This equipment has been tested and found to comply with the limits for a Class B digital device, pursuant to part 15 of the FCC Rules. These limits are designed to provide reasonable protection against harmful interference in a residential installation. This equipment generates, uses and can radiate radio frequency energy and, if not installed and used in accordance with the instructions, may cause harmful interference to radio communications. However, there is no guarantee that interference will not occur in a particular installation. If this equipment does cause harmful interference to radio or television reception, which can be determined by turning the equipment off and on, the user is encouraged to try to correct the interference by one or more of the following measures:

- Reorient or relocate the receiving antenna
- Increase the separation between the equipment and receiver
- Connect the equipment into an outlet on a circuit different from that to which the receiver is connected
- Consult the dealer or an experienced radio/TV technician for help.

Clear Connect - Type X devices - This equipment complies with FCC/ISED radiation exposure limits set for an uncontrolled environment. The user should avoid prolonged exposure within 7.9 in (20 cm) of the antenna, which may exceed the FCC/ISED radio frequency exposure limits.

### Limited Warranty:

[www.lutron.com/warranty](http://www.lutron.com/warranty) or call 1.844.LUTRON1 for a printed copy.

Lutron, Athena, Claro, Clear Connect, myRoom, Pico, Satin Colors, Sunnata, and any related trade dress and logos are trademarks or registered trademarks of Lutron Electronics Co., Inc. in the US and/or other countries.

App Store is a service mark of Apple Inc., registered in the U.S. and other countries.

All other product names, logos, and brands are property of their respective owners.

©2025 Lutron Electronics Co., Inc.