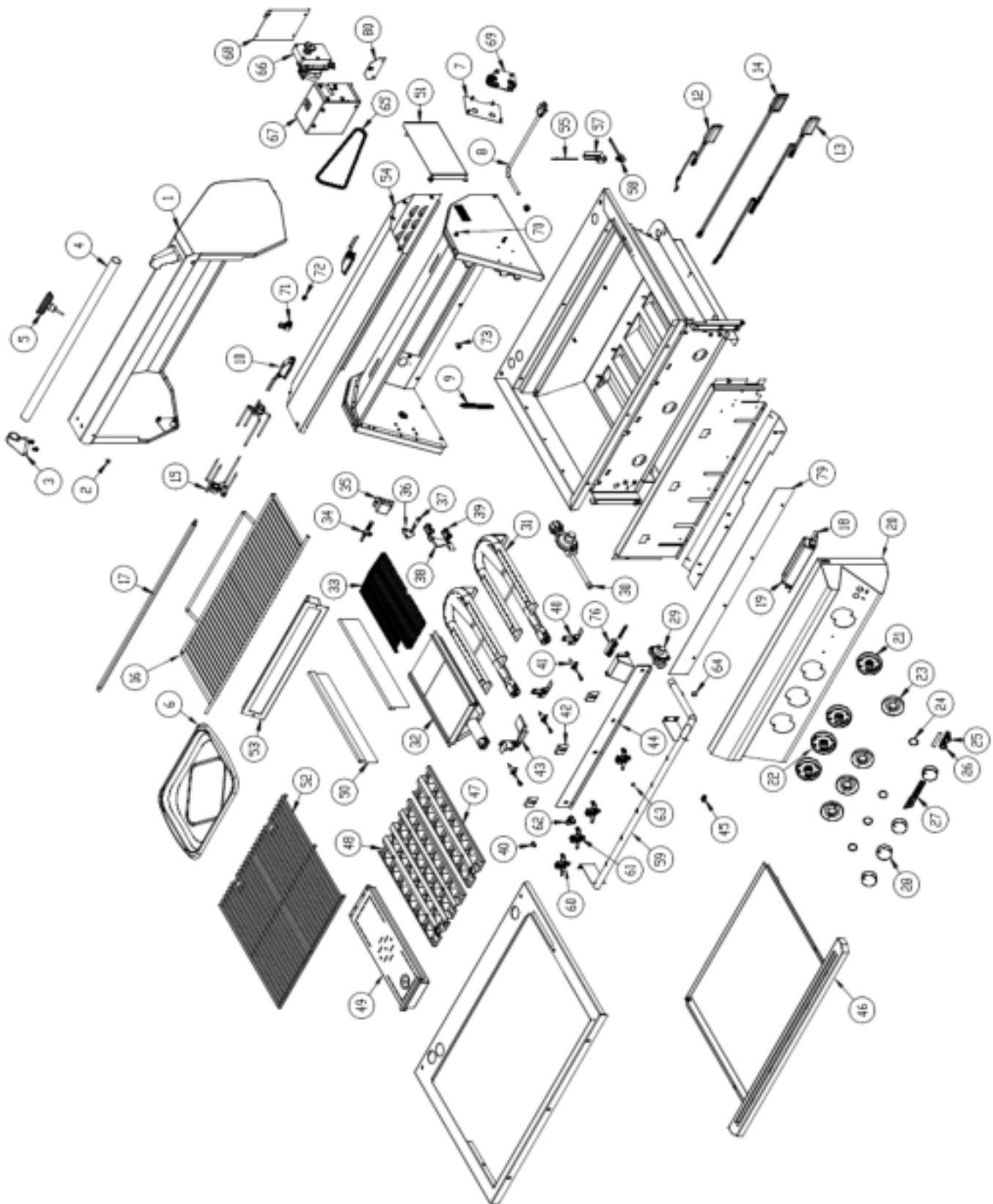


# EXPLODED VIEW



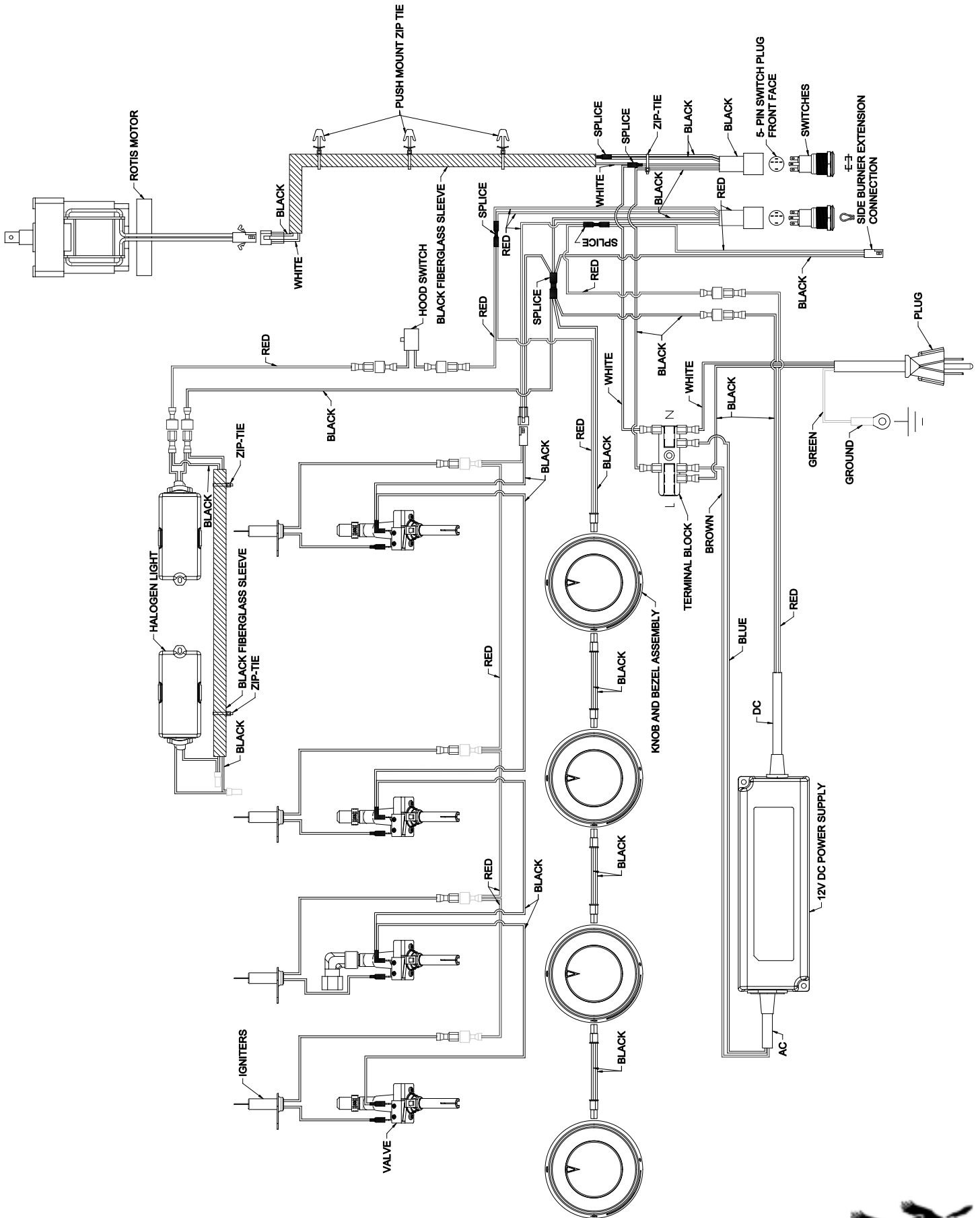
# REPLACEMENT PARTS LIST

Item No.	TE Part Number	Description	TEBQ 30G	TEBQ 30R	TEBQ 36G	TEBQ 36R	TEBQ 42G	TEBQ 42R	TEBQ 54R
1	26312-30WY	30" Front Hood Welded Assembly	1	1	-	-	-	-	-
	26312-36WY	36" Front Hood Welded Assembly	-	-	1	1	-	-	-
	26312-42WY	42" Front Hood Welded Assembly	-	-	-	-	1	1	-
	26312-54WY	54" Front Hood Welded Assembly	-	-	-	-	-	-	1
2	14128	Hood Bumper	4	4	4	4	4	4	4
3	13258	Handle Endcap, Tri to Rod	2	2	2	2	2	2	2
4	12315	Hood Handle (1.25D x 18 GA x 24)	1	1	-	-	-	-	-
	12339	Hood Handle (1.25D x 18 GA x 30)	-	-	1	1	-	-	-
	12316	Hood Handle (1.25D x 18 GA x 36)	-	-	-	-	1	1	-
	12347	Hood Handle (1.25D x 18 GA x 48)	-	-	-	-	-	-	1
5	15354	Thermometer	1	1	1	1	1	1	1
6	14421	Basting Pan	-	1	-	1	-	1	1
7	26311	Plate, Chain Cover	-	1	-	1	-	1	1
8	16111	Electrical Cord	1	1	1	1	1	1	1
9	14226	Hood Spring A-286	2	2	2	2	2	2	2
10	4490030061	Halogen Light	2	2	2	2	2	2	3
11*	16270-1	Halogen Bulb	2	2	2	2	2	2	3
12	16270-30RY	RH Halogen Light Assembly	1	1	-	-	-	-	-
	16270-36RY	RH Halogen Light Assembly	-	-	1	1	-	-	-
	16270-42RY	RH Halogen Light Assembly	-	-	-	-	1	1	-
13	16270-54RY	RH Halogen Light Assembly	-	-	-	-	-	-	1
14	16270-CY	Center Halogen Light Assembly	-	-	-	-	-	-	1
15	13865	Meat Holder Forks (pair), 9/16" spit rod	-	1	-	1	-	1	2
16	13929-30	Warming Rack (30") (s/s)	1	1	-	-	-	-	-
	13929-36	Warming Rack (36") (s/s)	-	-	1	1	-	-	-
	13929-42	Warming Rack (42") (s/s)	-	-	-	-	1	1	-
	13929-54	Warming Rack (54") (s/s)	-	-	-	-	-	-	1
17	13928-30	Spit Rod (30") (s/s)	-	1	-	-	-	-	-
	13928-36	Spit Rod (36") (s/s)	-	-	-	1	-	-	-
	13928-42	Spit Rod (42") (s/s)	-	-	-	-	-	1	-
	13928-54	Spit Rod (54") (s/s)	-	-	-	-	-	-	1
18	26354Y	Transformer Bracket Assembly	1	1	1	1	1	1	1
19	16385	Transformer	1	1	1	1	1	1	1
20	26331-30WY	Front Panel Weld Assembly (30") G	1	-	-	-	-	-	-
	26316-30WY	Front Panel Weld Assembly (30") R	-	1	-	-	-	-	-
	26331-36WY	Front Panel Weld Assembly (36") G	-	-	1	-	-	-	-
	26316-36WY	Front Panel Weld Assembly (36") R	-	-	-	1	-	-	-
	26331-42WY	Front Panel Weld Assembly (42") G	-	-	-	-	1	-	-
	26316-42WY	Front Panel Weld Assembly (42") R	-	-	-	-	-	1	-
	26316-54WY	Front Panel Weld Assembly (54")	-	-	-	-	-	-	1
21	13270	Light Bezel Housing Assembly	3	3	4	4	4	4	6
22	13267	Light Bezel Assembly, Rotis	-	1	-	1	-	1	2
23	13224	Lens, Light Bezel	3	3	4	4	4	4	6
24	13226	Rubber Retention Ring, Light Bezel	3	3	4	4	4	4	6
25	16365	Switch, 110V, Rotis	-	1	-	1	-	1	1
26	16196	Switch, 12V, Lights	1	1	1	1	1	1	1
27	13203	Emblem, Twin Eagles	1	1	1	1	1	1	1
28	13235Y	Knob Assembly	3	3	3	3	4	4	6
29	15303	Regulator, NG	1	1	1	1	1	1	1
30	15302	Regulator, LP	1	1	1	1	1	1	1
31	13301	U6-Burner	2	2	-	-	3	3	3
	13350	U5-Burner	-	-	3	3	-	-	-
32	13345	Sear Burner Assembly (Optional Addition)	1	1	1	1	1	1	1
33	13144	Mesh Screen for Sear Burner	1	1	1	1	1	1	1
34	16322	Hot Surface Igniter, Rotisserie	-	1	-	1	-	1	1
	16423	Hot Surface Igniter, Rotisserie, RH	-	-	-	-	-	-	1
35	26334	I.R. Igniter Hood - LH	-	1	-	1	-	1	1
	26377	I.R. Igniter Hood - RH	-	-	-	-	-	-	1
36	26306	Bracket, Warming Rack Stowed	2	2	2	2	2	2	2
37	14340	Hood Sleeve	2	2	2	2	2	2	2
38	26307	Bracket, Warming Rack HI/LOW Position	2	2	2	2	2	2	2
39	14420	Roller Bearing	-	4	-	4	-	4	4
40	21750WY	Flash Tube Assembly	2	2	3	3	3	3	3
41	16321	Igniter, Main Burners	2	2	3	3	3	3	4
42	26344	Ignition Cover	2	2	3	3	3	3	4
43	21765WY	Flash Tube Assembly (Optional Sear Burner Only)	1	1	1	1	1	1	1

44	26326-30	Lower Front Air Baffle (30")	1	1	-	-	-	-	-
	26326-36	Lower Front Air Baffle (36")	-	-	1	1	-	-	-
	26326-42	Lower Front Air Baffle (42")	-	-	-	-	1	1	-
	26326-54	Lower Front Air Baffle (54")	-	-	-	-	-	-	1
45	15121	Microswitch, Valve Burner	2	2	3	3	3	3	4
46	26319-30	Drip Pan Assembly	1	1	-	-	-	-	-
	26319-36	Drip Pan Assembly	-	-	1	1	-	-	-
	26319-42	Drip Pan Assembly	-	-	-	-	1	1	-
	26319-54	Drip Pan Assembly	-	-	-	-	-	-	1
47	21761Y	5" Briquette Tray Assembly	-	-	2	2	-	-	-
	21752Y	6" Briquette Tray Assembly	2	2	-	-	2	2	2
48	21759Y	10" Briquette Tray Assembly	-	-	2	2	-	-	-
	21753Y	12" Briquette Tray Assembly	1	1	-	-	2	2	2
49	22735Y	Smoker Box Assembly (30", 42", 54")	1	1	-	-	1	1	1
	22737Y	Smoker Box Assembly (36")	-	-	1	1	-	-	-
50	21743	Zone Divider	1	1	2	2	2	2	3
51	26352	Chain Guard	-	1	-	1	-	1	1
52	13875	10 9/16" SS Hex Grate	-	-	3	3	-	-	-
	13802	12" SS Hex Grate	-	-	-	-	1	1	2
	13801	13" SS Hex Grate	2	2	-	-	2	2	2
53	13330	I.R. Burner Small	-	1	-	1	-	-	2
	13331	I.R. Burner Large	-	-	-	-	-	1	-
TECHNICIAN ORDER PARTS									
54	4490050021	Cover, Rear Hood, 30	1	1	-	-	-	-	-
	4490050022	Cover, Rear Hood, 36	-	-	1	1	-	-	-
	4490050023	Cover, Rear Hood, 42	-	-	-	-	1	1	-
	4490050024	Cover, Rear Hood, 54	-	-	-	-	-	-	1
55	12112	Hood Switch Striker	1	1	1	1	1	1	1
56*	14232	Self-locking Retaining Ring	3	3	3	3	3	3	3
57	21756	Bracket, Hood Switch	1	1	1	1	1	1	1
58	16194	Switch, Hood, Carling P2267T-ID-RD	1	1	1	1	1	1	1
59	12734	Manifold (30")	1	1	-	-	-	-	-
	12736	Manifold (36")	-	-	1	1	-	-	-
	12735	Manifold (42")	-	-	-	-	1	1	-
	12745	Manifold (54")	-	-	-	-	-	-	1
60	15149Y	Valve Burner	2	2	3	3	3	3	4
61	15151Y	Rotis Valve Burner	-	1	-	1	-	1	2
62	12601	Elbow, 3/8CC x 1/2FIP	-	1	-	1	-	1	1
63	12606	Plug, 1/8	*	*	*	*	*	*	*
64	12665	Plug, Hex Socket, 1/4 NPT	1	1	1	1	1	1	1
65	13932	Chain	-	1	-	1	-	1	1
66	16366Y	Rotisserie Motor with Sprocket	-	1	-	1	-	1	1
67	26349	Rotisserie Motor Housing	-	1	-	1	-	1	1
68	26351	Cover, Rotis Motor Housing	-	1	-	1	-	1	1
69	26807Y	Sprocket Assembly	-	1	-	1	-	1	1
70	14194	Spring Stand Off	2	2	2	2	2	2	2
71	12640	Elbow, 3/8 CC X 3/8 FNPT	-	1	-	1	-	1	2
72	15108-57	Orifice #57 I.R. LP	-	1	-	1	-	-	2
	15108-48	Orifice #48 I.R. NG	-	-	-	-	-	1	-
73	15110-41	Orifice, #41 NG (Main Burner)	2	2	3	3	3	3	4
	15110-53	Orifice, #53 LP (Main Burner)	2	2	3	3	3	3	4
74*	16006	8" Bezel Loop Harness	-	2	-	2	-	2	4
75*	16007	14" Bezel Loop Harness	1	-	2	1	2	1	1
76	16386	Terminal Block	1	1	1	1	1	1	1
77*	16391	12V Harness	1	1	1	1	1	1	1
78*	16392	110V Harness	-	1	-	1	-	1	1
79	26336-30	Front Heat Shield (30")	1	1	-	-	-	-	-
	26336-36	Front Heat Shield (36")	-	-	1	1	-	-	-
	26336-42	Front Heat Shield (42")	-	-	-	-	1	1	-
	26336-54	Front Heat Shield (54")	-	-	-	-	-	-	1
80	4490050477	Cover, Motor Junction Box	-	1	-	1	-	1	1
Non-Shown Parts									
	13129-12	Briquettes (12 pack)	(4)	(4)	(6)	(6)	(6)	(6)	(6)



# WIRING DIAGRAM





TWIN EAGLES



DOMETIC

## GRILL WARRANTY

**LIMITED LIFETIME WARRANTY:** Dometic Residential US warrants the stainless-steel main burners, hexagonal grates and all fabricated stainless-steel components, to be free from defects in materials and workmanship under normal residential use for the lifetime of the product. This warranty excludes discoloration, surface scratches, weather and atmospheric related staining, and minor surface rust and oxidation which are normal conditions and are to be expected with any outdoor product. The actual part will be repaired or replaced, free of charge, with the owner paying for all other costs including labor, shipping, and handling.

**LIMITED FIVE YEAR WARRANTY:** Dometic Residential US warrants the stainless steel briquette trays, sear zone burners, rotisserie burners and drip pans to be free from defects in materials and workmanship under normal residential use for a period of five years from the original date of purchase. The actual part will be repaired or replaced, free of charge, with the owner paying for all other costs including labor, shipping, and handling.

**LIMITED TWO YEAR WARRANTY:** Dometic Residential US warrants all other grill components to be free from defects in materials and workmanship under normal residential use for a period of two years from the original date of purchase. The actual part will be repaired or replaced, free of charge, with the owner paying for all other costs including labor, shipping, and handling.

**ONE-YEAR FULL WARRANTY:** Dometic Residential US warrants the outdoor gas grill and all other components to be free from defects in materials and workmanship under normal residential use for a period of one year from the original date of purchase. Dometic Residential US will repair or replace parts found to be defective at no cost to the original purchaser. Warranty service must be performed by a Dometic Residential US authorized representative during normal business hours.

**NINETY (90) DAY RESIDENTIAL PLUS WARRANTY:** This warranty applies to applications where use of the product extends beyond normal residential use such as bed and breakfast inn and private clubs. The actual part will be repaired or replaced, free of charge, with the owner paying for all other costs including labor, shipping and handling. This warranty excludes all commercial locations such as restaurants and food service locations.

### WARRANTY LIMITATIONS & EXCLUSIONS

This warranty shall apply only to the products purchased and located in the continental United States and Canada. Service must be provided in the country where the product is purchased. The warranty coverage begins on the original date of purchase and proof of date of purchase is required. To activate the warranty, we require that you send in the attached warranty registration card. This warranty applies only to the original purchaser and may not be transferred.

This warranty does not apply to damages resulting from negligence, alteration, misuse, abuse, accident, natural disaster, loss of electrical power to the product for any reason, improper installation or improper operation, unauthorized adjustments or calibrations, dings, dents, scratches, or damages due to harsh cleaning chemicals. This warranty does not apply to commercial use, or to products with altered or removed serial numbers. Display models are generally sold "as is" and are subject to the following warranty exclusions: missing components, scratches, dents and other exterior or cosmetic damages, electrical, gas and ignition system. All other warranties (five year and lifetime) will remain in effect). Twin Eagles shall not be liable for incidental, consequential, special or contingent damages resulting from its breach of this written warranty or any implied warranty.

**WARRANTY SERVICE & REPLACEMENT PARTS:** Call your authorized selling dealer or call Dometic Residential US directly at **800-789-2206**. Be prepared to furnish the following information: Purchaser's name, model and serial number of the grill, date of purchase and the accurate description of the problem. Dometic Residential US will not pay for service calls for correcting an installation problem. Owner shall be responsible for proper installation, providing normal care and maintenance, providing proof of purchase upon request and making the grill accessible for service. In the event of any warranty replacement, all removal, replacement, installation and shipping costs are the responsibility of the grill owner. If the unit is located in a remote area where Dometic Residential US factory authorized service is not available, you may need to bring the unit to a Twin Eagles authorized service location at your own cost and expense.

Some states do not allow limitations on how long an implied warranty lasts, or the exclusions of or limitations on consequential damages. This warranty gives you specific legal rights and you may have other rights, which vary.

