

# SCAR GONE™

## Scar Management Massager

Reduces the appearance of  
scars and promotes optimal  
healing with massage



## Quick Start Guide

# Welcome

Thank you for choosing Scar Gone™.

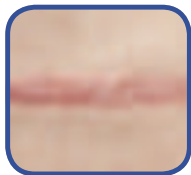
Vibrating at 5,500 cycles per minute, your Scar Gone™ Management Massager can help to restore motion, strength and mobility to injured tissue, as well as diminishing the appearance, texture and tone of both new and old scars.

## Massage Therapy & Scar Types



### **Keloid scars**

Massage helps to soften and flatten raised keloid scar tissue, keeping it flexible and preventing it from adhering to the underlying muscles, tendons, blood vessels, nerves and even bones. Acne scars are keloid scars.



### **Hypertrophic scars**

The most common form of scar tissue that forms after an injury. Massage can help to increase blood flow to the area and speed up the healing time.



### **Contracture scars (burn scars)**

Once a burn scar has matured, massage is effective for maintaining mobility and faster healing.

# Instructions

1. Twist and release the base of the Scar Gone™ Scar Management Massager.
2. Insert a C-battery and replace the base.
3. Clean your chosen massage head before and after use in warm, soapy water.
4. Remove the protective cap and insert your chosen massage head.
5. Push the switch upwards to turn the device on.
6. Move in circular motions across your scar for as long as desired, making sure not to press too hard which could cause discomfort.
7. Push the switch down to turn off the device. Remove your massage head and replace the protective cap before storing.

**Top Tip:** Use with Scar Gone™ Scar Balm for faster healing and improved scar appearance.



## Choosing Your Massage Head

Your Scar Gone™ Scar Management Massager comes with 3 massage heads:



**Domed Head**  
To stimulate cell repair



**Flat Head**  
To relax scar tissue



**Cone Head**  
To relieve tightness and pain

## Cautions & Contraindications

- > Keep out of direct sunlight or strong heat.
- > Keep out of humidity and do not immerse the unit in water or any other substance.
- > Remove battery when not in use to preserve battery life.
- > Do not use the device on the throat or eye.
- > If pregnant, check with a physician before using the device.

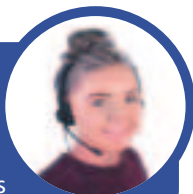
## Specifications

Power Source .....	DC 1.5V Battery
Cycles Per Minute (CPM) .....	Approx. 5,500/min
Amplitude .....	0.06mm
Battery Life .....	Approx. 90 minutes of continual operation
Size .....	42 x 33 x 135mm
Weight .....	3.5oz (100g) without battery

## Contact

Email: [sales@stressnomore.co.uk](mailto:sales@stressnomore.co.uk)

[www.stressnomore.co.uk/contactus](http://www.stressnomore.co.uk/contactus)



[www.stressnomore.co.uk](http://www.stressnomore.co.uk)