

dyson hepa big+quiet formaldehyde

Dyson HEPA Big+Quiet
Formaldehyde logo.

User guide

SV12 JN.00000 PN.000000-00-00
00.00.00 VERSION NO.01

The Dyson HEPA
Big+Quiet
Formaldehyde purifier.
Power button on an LCD
screen, mesh filter cover
and CO₂ sensor on the
side.



Contents

Getting started

Assembling your machine

Positioning your machine

Using your machine

CO₂ monitoring

Changing your HEPA filter

Changing your carbon filter

Looking after your machine

Getting started

Real-time LCD screen
LCD screen reports indoor
air quality in real time.

A real-time LCD display
screen reports indoor
air quality.

Arrow pointing at the
power button,
positioned on the LCD
display screen.

Power button
Press to turn on or off.

CO₂ sensor
Senses and reports CO₂ levels
and notifies when they exceed
recommended volumes.

CO₂ sensor positioned
on the side of the conic
amplifier senses levels.

360° HEPA H13 filter

Image of the 360°
HEPA H13 filter in the
Dyson HEPA Big+Quiet
Formaldehyde.

The selective catalytic
oxidisation filter, that will
never need replacing.

**Selective catalytic
oxidisation filter**

K-carbon filter

The pleated K-carbon
filter is wrapped
around the central
body of the purifier.

Below the machine are
ergonomic wheels, for easy
manoeuvrability on hard
surfaces and carpets.

Ergonomic wheels
Easy to manoeuvre across
a room – designed for
hard surfaces and carpets.

Assembling your machine

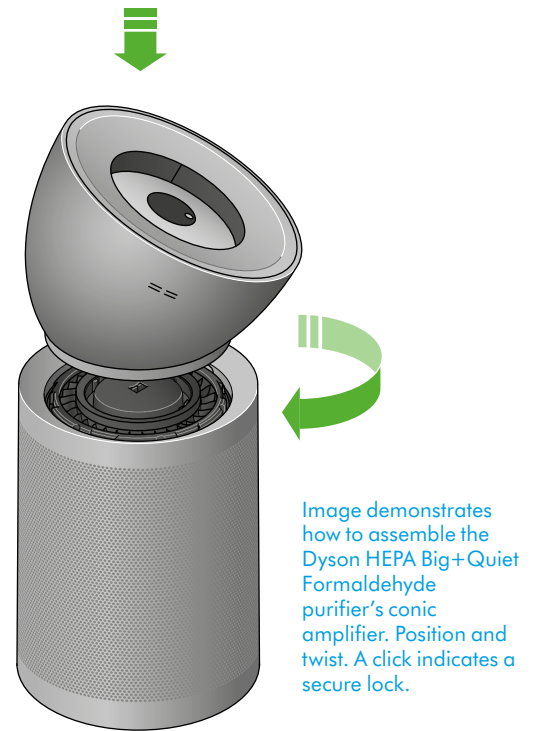
Use both hands to lift your machine out of the box, by its base.

Your machine comes with a HEPA filter, carbon filter and permanent catalytic filter. These are already installed in your machine.

Lift the conic amplifier out of the box and place it on the top of your machine.

Rotate the conic amplifier until it clicks securely into place.

Plug in and press the power button.



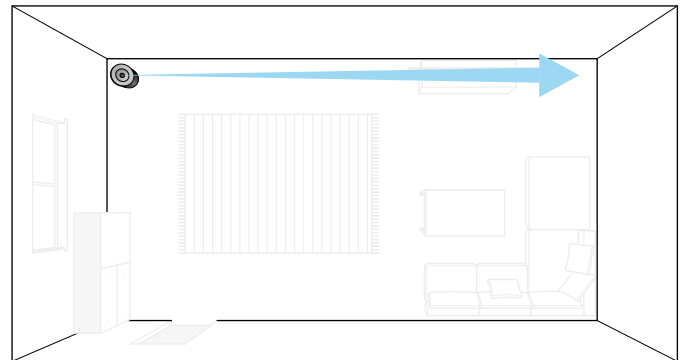
Positioning your machine

Your machine is fitted with wheels to make it easier to move.

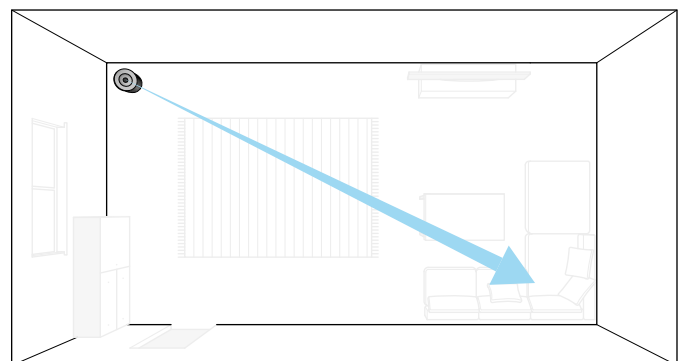
Position your machine on a level floor.

For the most effective purification, position your machine on the edge of the room with the conic amplifier pointing to the furthest point, along the wall.

You can also position your machine facing diagonally across the room.



The purifier positioned on the edge of a room. A blue arrow shows the conic amplifier direction, pointing to furthest point, along the wall.



The purifier positioned on the edge of a room. A blue arrow shows the conic amplifier direction, pointing diagonally across the room.

Using your machine

Power and Airflow speed

Press the Power button on the screen to switch on your machine.

Press the Power button again for Airflow speed 1.

Press the Power button a second time for Airflow speed 2.

Press and hold the Power button to switch off your machine.

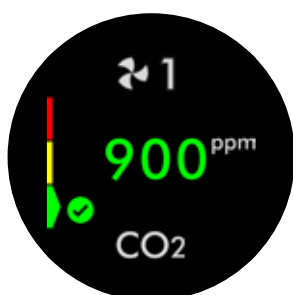


Finger point illustrates where the power button is positioned, on the conic amplifier.

CO₂ monitoring

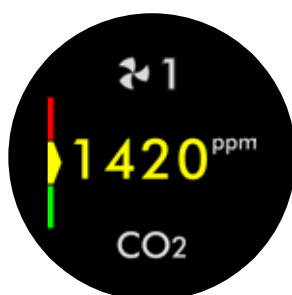
The LCD screen displays the power mode setting and the CO₂ level in the room – reporting it in real time.

LCD screen display showing that CO₂ is at a safe level. This is indicated by green-coloured numbers.



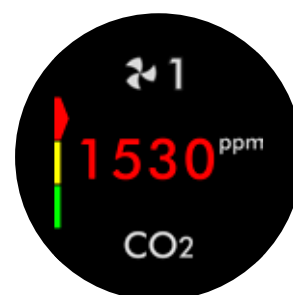
Low CO₂
CO₂ is at a safe level.

LCD screen display showing that CO₂ is building up. This is indicated by yellow-coloured numbers.



Medium CO₂
CO₂ has built up. It's advisable to take action, like opening a door or window.

LCD screen display showing that CO₂ is at a concerning level. This is indicated by red-coloured numbers.



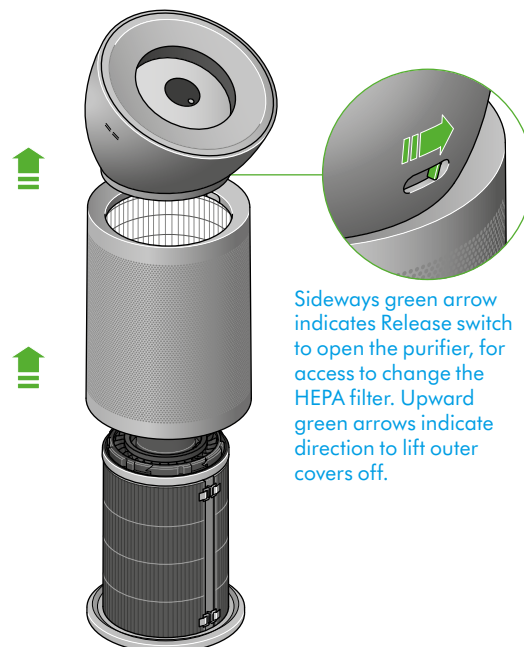
High CO₂
CO₂ has built up to a level of concern. It's advisable to take action, like opening a door or window.

Changing your HEPA filter

Remove the conic amplifier

Slide the Release button on the back of the conic amplifier to unlock. Lift the conic amplifier off your machine.

Lift the outer cover off the base of your machine.

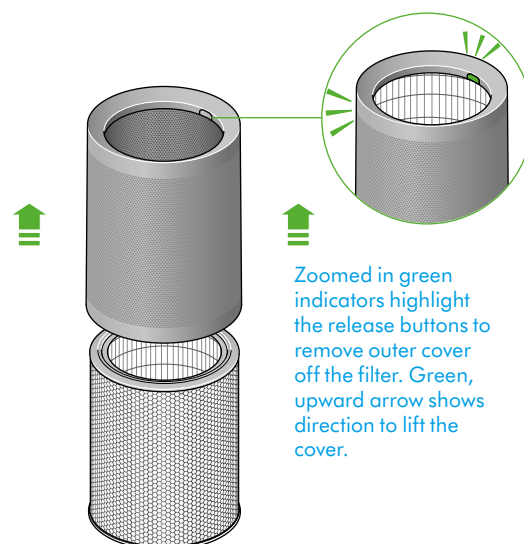


Sideways green arrow indicates Release switch to open the purifier, for access to change the HEPA filter. Upward green arrows indicate direction to lift outer covers off.

Remove the filter

The HEPA filter is located in the outer cover. Press the filter release buttons located on the inner rim and lift the outer cover off the filter.

Dispose of the filter.



Zoomed in green indicators highlight the release buttons to remove outer cover off the filter. Green, upward arrow shows direction to lift the cover.

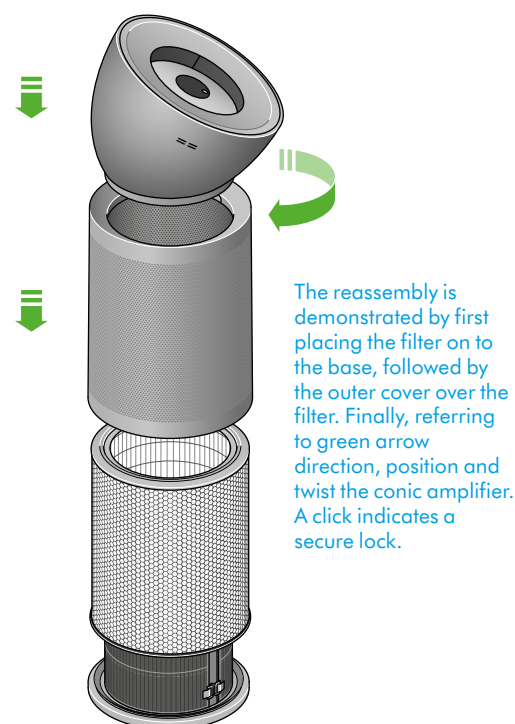
Install a new filter

Remove your replacement filter from any packaging. Place the filter on the base of your machine.

Place the outer cover over the filter and press down until it clicks securely into position.

Place the conic amplifier on your machine and rotate until it clicks securely in position.

Plug in and press the power button.



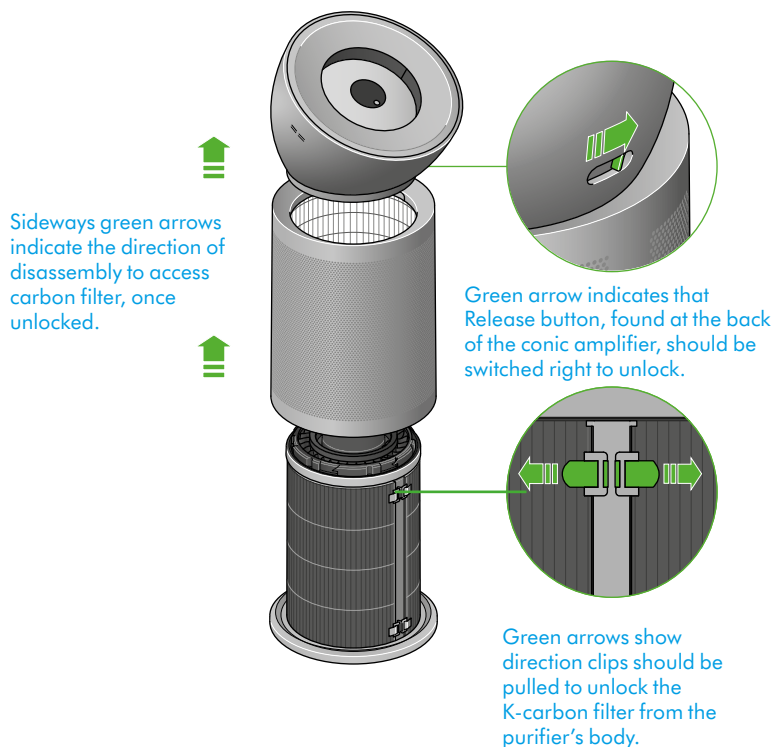
The reassembly is demonstrated by first placing the filter on to the base, followed by the outer cover over the filter. Finally, referring to green arrow direction, position and twist the conic amplifier. A click indicates a secure lock.

Changing your carbon filter

Remove the conic amplifier

Slide the Release button on the back of the conic amplifier to unlock. Lift the conic amplifier off your machine.

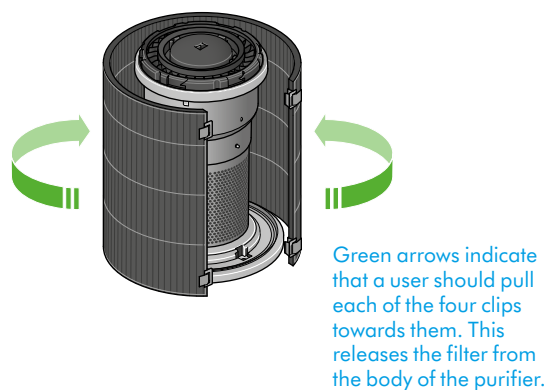
Lift the outer cover off the base of your machine.



Remove the filter

The carbon filter is wrapped around the central body of your machine. Pull each of the four clips towards you to release the filter.

Dispose of the filter.



Install a new filter

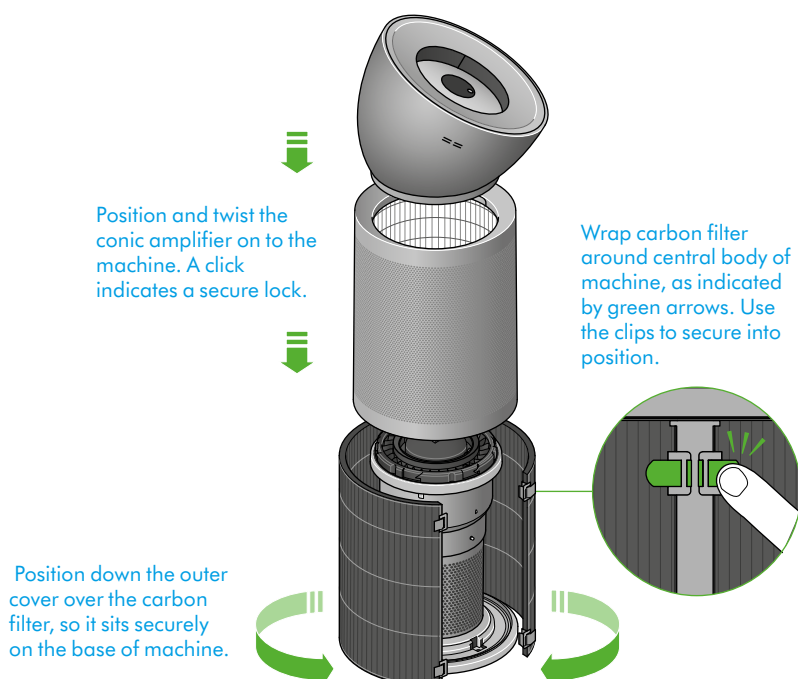
Remove your replacement filter from any packaging. Place the filter on the base of your machine.

Wrap the filter around the central body of your machine, fit the clips into position and push each one to secure the filter.

Place the outer cover back in position on the base of your machine.

Place the conic amplifier on your machine and twist until it clicks securely in position.

Plug in and press the power button.

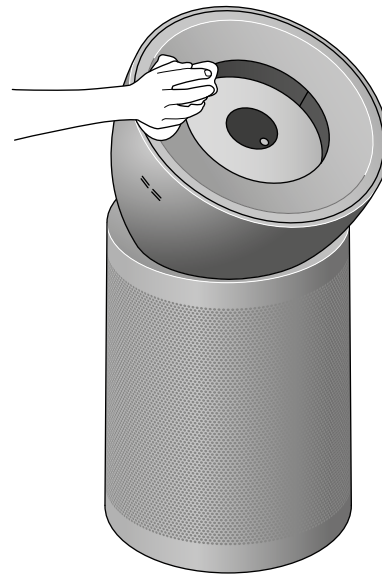


Looking after your machine

To always get the best performance from your Dyson air purifier, it's important to regularly clean it and check for blockages.

Cleaning your machine

If your machine is dusty, wipe with a damp, lint-free cloth.



Clean the machine regularly using a damp, lint-free cloth.

Check the sensor inlets on the left hand side of the conic amplifier for dust and debris.

Look for dust and debris in the outer cover and in the conic amplifier.

Use a soft brush to remove dust and debris.

Don't use detergents or polishes to clean your machine.

