

Modern Dual Monitor & Laptop Stand with Adjustable Width

KAMTRSDUALA

Components



A Cam Connector (x8)



B Cam Screw (x8)



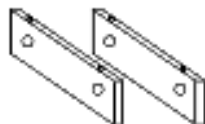
C Pin (x2)



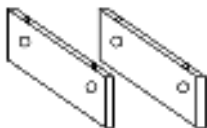
D (x2)



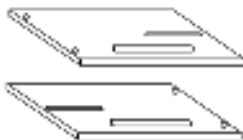
E Allen Key Screwdriver



F Short Panel (x2)



G Long Panel (x2)



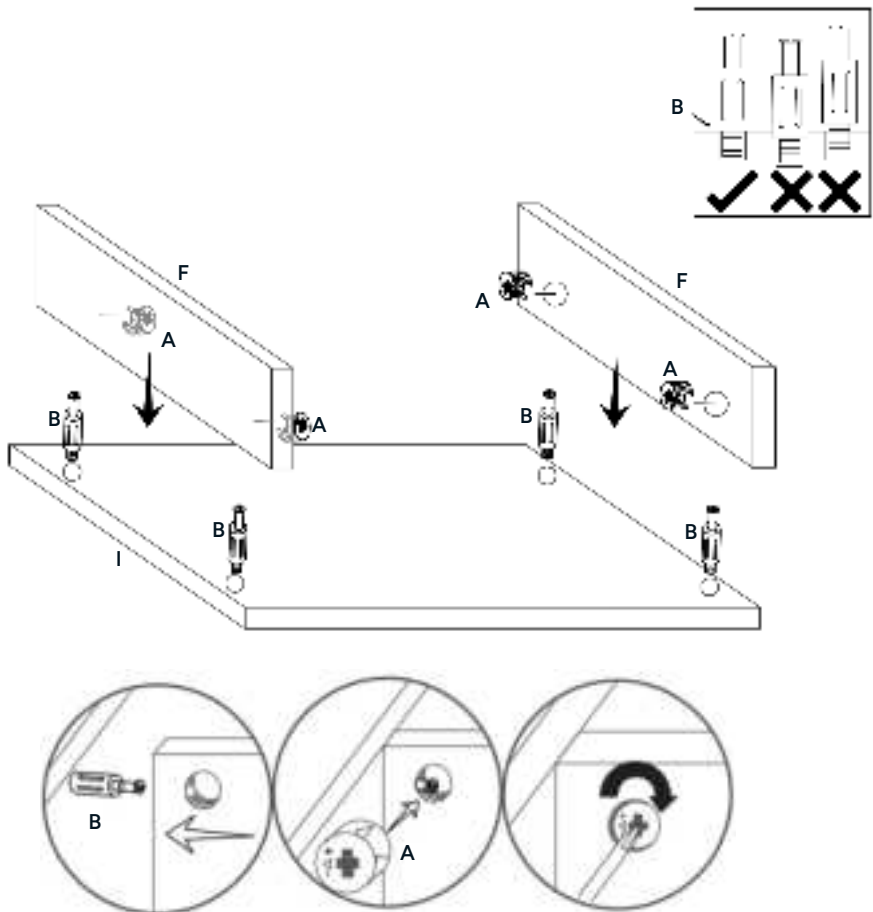
H Platform (x2)
(Left x1, Right x1)



I Centre Platform

Assembly

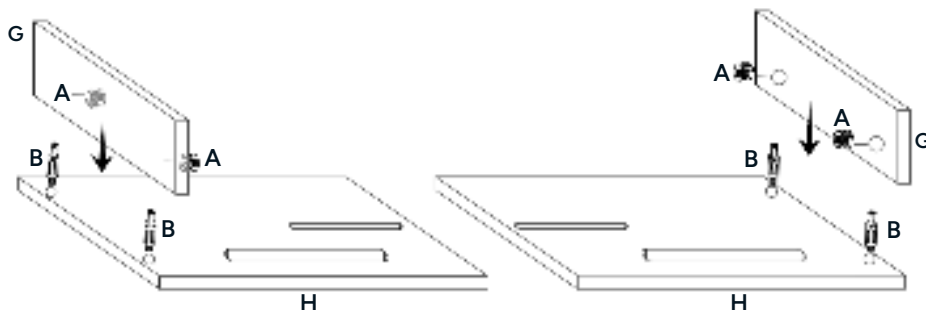
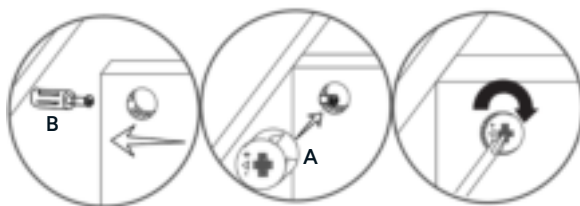
1. Attach x4 Cam Screws **(B)** to the Centre Platform **(I)**. Tighten using the Allen Key Screwdriver. Ensure the Cam Screws **(B)** are properly inserted so the body of the screw sits flush with the panel's surface.
2. Attach the Short Panels **(F)** to Centre Panel **(I)** by aligning the Cam Screw **(B)** with the holes in the side of the Short Panel **(F)**.
3. Insert x4 Cam Connectors **(A)** into the holes in the Short Panels **(F)** ensuring the arrow on the Cam Connector **(A)** is pointing towards the head of the Cam Screw **(B)**.
4. Lock the panels together by rotating the Cam Connectors **(A)** in a clockwise direction using the Allen Key Screwdriver.



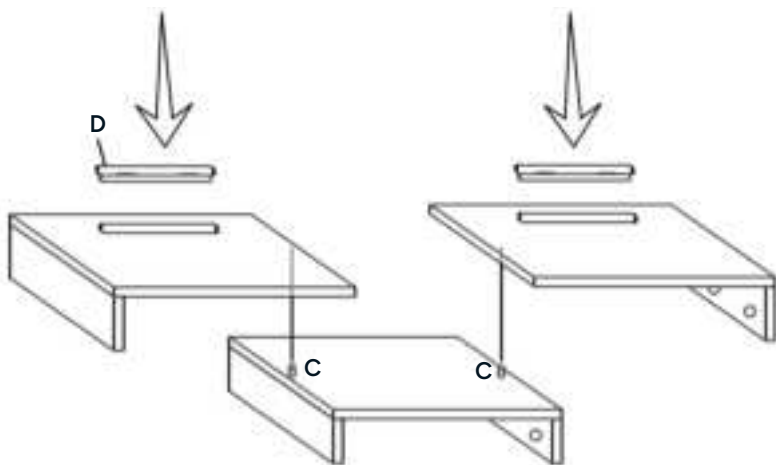
5. Flip the assembly over and insert x2 Pins **(C)** in the holes on the top surface.



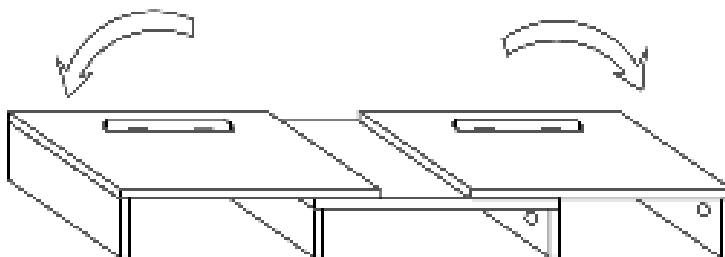
6. Attach x4 Cam Screws **(B)** to Left & Right Platforms **(H)**. Tighten using the Allen Key Screwdriver. Ensure the Cam Screws **(B)** are properly inserted so the body of the screw sits flush with the panel's surface.
7. Attach the Long Panels **(G)** to Centre Panel **(I)** by aligning the Cam Screw **(B)** with the holes in the side of the Short Panel **(F)**.
8. Insert x4 Cam Connectors **(A)** into the holes in the Long Panels **(G)** ensuring the arrow on the Cam Connector **(A)** is pointing towards the head of the Cam Screw **(B)**.
9. Lock the panels together by rotating the Cam Connectors **(A)** in a clockwise direction using the Allen Key Screwdriver.



10. Attach the x2 outer platform assemblies to the centre assembly ensuring the Pins (C) are aligned with the slots on the underside of the outer platforms.
11. Insert x2 part (D) to slots on the top surface of the outer platforms.



12. Adjust the width and angle of the stand to your requirements by sliding the outer platforms to the desired position.



WARNING: The weight capacity of each side of the stand is 10kg. Do not exceed the weight capacity.

Notes

[illegible]

Need more information?

We hope that this user guide has given you the assistance needed for a simple set-up.

For the most up-to-date guide for your product, as well as any additional assistance you may require, head online to **help.Kogan.com**.

