

Aesty

Redefining Hair Devices



Aesty Dual Heater



reddot award 2021
winner



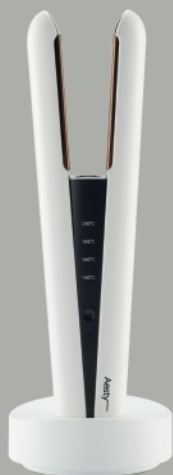
Travel Pouch

Charging Cradle
(may not be included)

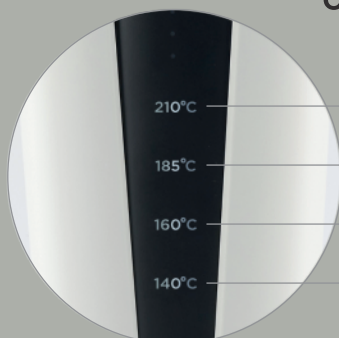
Power Cable

Aesty Dual Heater Flat Iron

Power Adapter



Optimal Temperature Controls



210°C

210°C

Curly, coarse hair

185°C

185°C

Thick, long hair

160°C

160°C

Smooth, silky hair

140°C

140°C

Thin, fine hair



MuJin Choi (@mujin_a)

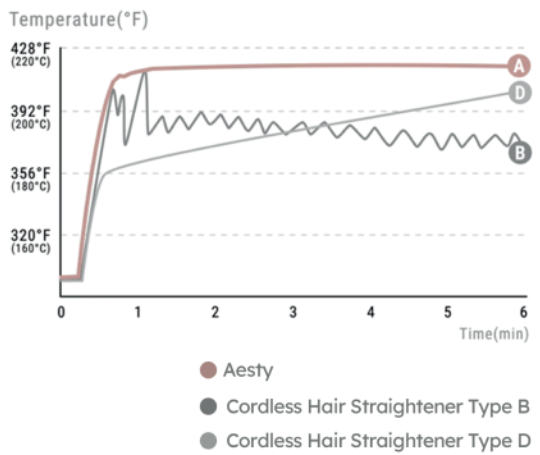
celebrity hairstylist,

who has been working with numerous **A-list K-Pop groups**

"With advanced cordless technology
and the Dual Heaters evenly distributing heat to hair,
flawless styling is possible wherever you are.
I take it almost everywhere I go;
music video sets, photoshoots - I've even used it in my car."

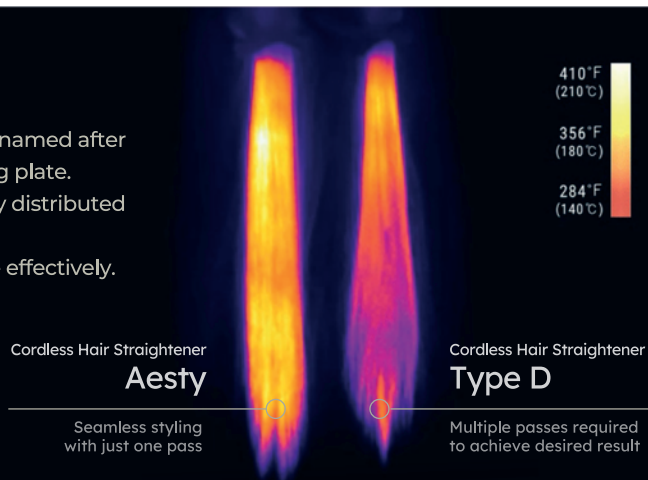
Temperature Control

At Aesty,
we truly care about your hair,
which is why we created a device
that creates accurately-maintained
temperatures, resulting in
minimal heat damage.
Aesty's advanced technology means
a heat-up time of approximately
40 seconds, and temperature regulation
150 times/second to stop any fluctuations
in temperature.



Comparison Chart

Our Dual Heater technology is named after
the two heaters in each heating plate.
They allow for heat to be evenly distributed
across the plate and to hair,
requiring only one pass to style effectively.



Drop Us a Line

Have a question about our product,
partnerships/distribution, or anything else?
Please don't hesitate to send us an email
at info@aesty.com. We'd love to chat.

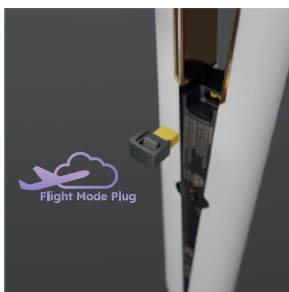


KEY FEATURES



DUAL HEATER

The Dual Heater shortens the preheating time to approximately 40 seconds & evenly distributes heat to hair, allowing you to achieve perfectly-styled hair.



FLIGHT MODE PLUG HYBRID MODE

With a Flight Mode Plug that meets airline criteria, it can be included as carry-on baggage during travel.



When using Hybrid Mode, the device operates through a direct power supply, rather than its battery. It can extend battery life.



4 CELL LITHIUM ION BATTERY

Aesty uses a high-power 4-cell lithium-ion battery, so you can style for longer periods of time without compromising temperature control.

It can maintain the maximum temperature of 210°C constantly for up to 40 minutes, enabling continuous, worry-free styling.



NO MORE SAFETY CONCERNS

Our technology detects motion, and shuts off automatically when not in use for more than 5 minutes.

*If there is no movement for more than 20 minutes while the device is charging, the device will be automatically shut off.



LIVE HEAT CONTROL

Our Live Heat Control system measures the device's temperature 150 times per second, resulting in a precisely-controlled temperature.

SPECIFICATIONS



Plates	Premium Titanium
Size	11.5in x 1.8in x 1.4in (292mm x 46mm x 35mm)
Weight	1.06lb (480g)
Battery	Samsung SDI 4-Cell Lithium Ion Battery 2,500mAh, 14.4V (36Wh)
Wattage	230w (Max)
Temperature Settings	285°F, 320°F, 365°F, 410°F (140°C, 160°C, 185°C, 210°C)
Temperature Control	150 times per second
Run Time	35~40mins (at 410°F)
Usage	Cordless, Hybrid Mode (Corded)
Components	Aesty Dual Heater™ Flat Iron (Titanium) Flight Mode Plug Power Adapter Power Cable Travel Pouch



Aesty — Dual Heater

Aesty —

www.aesty.com

Made by MANGOSLAB Co.,Ltd.

Made in Korea

