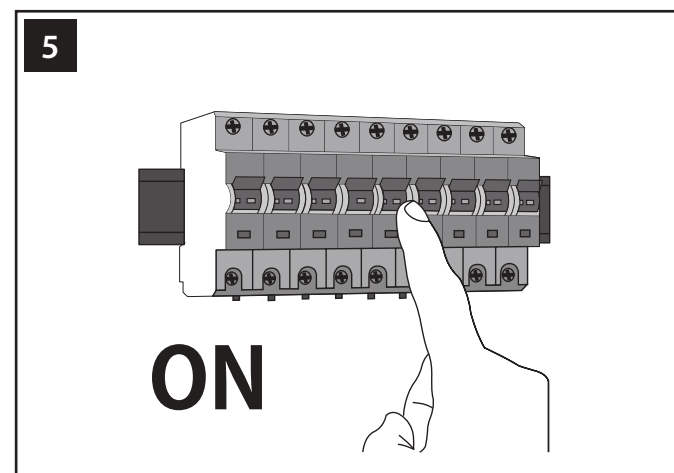
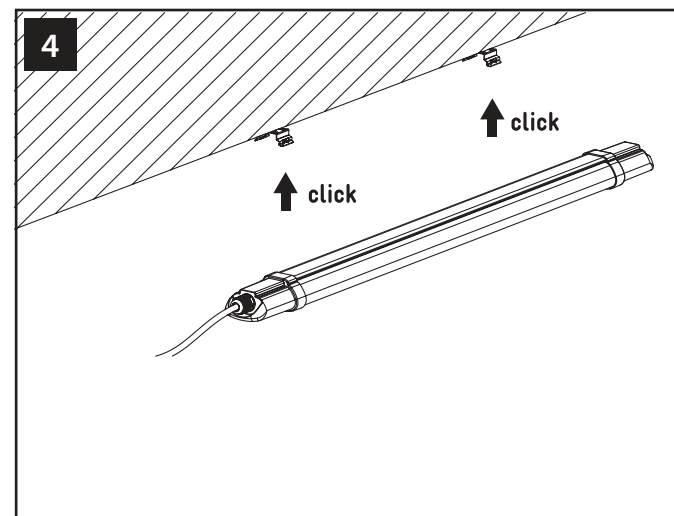
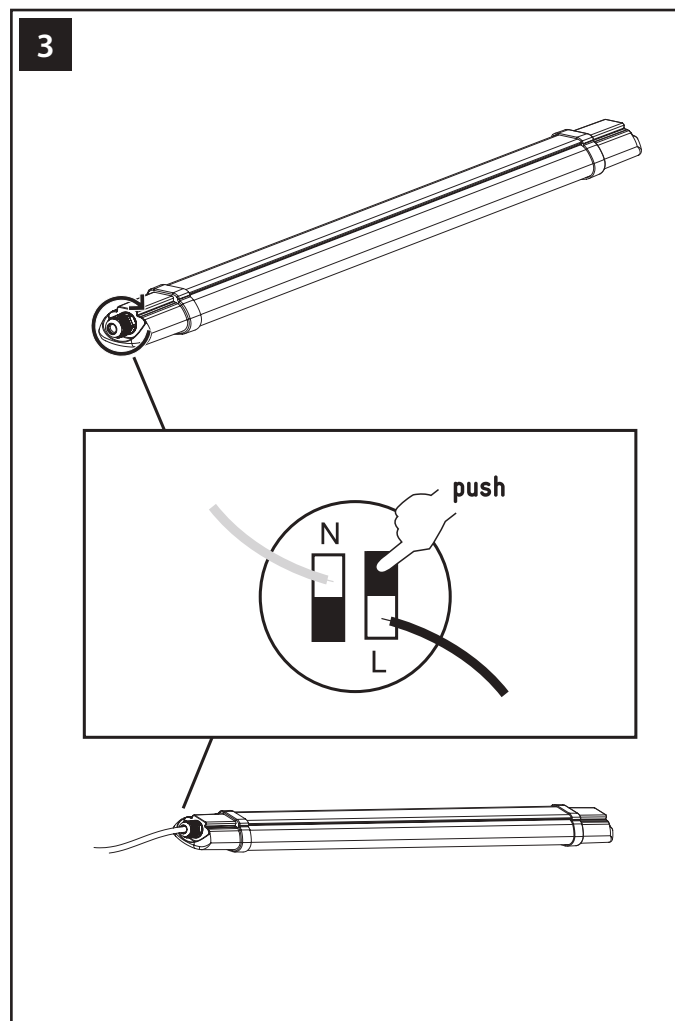
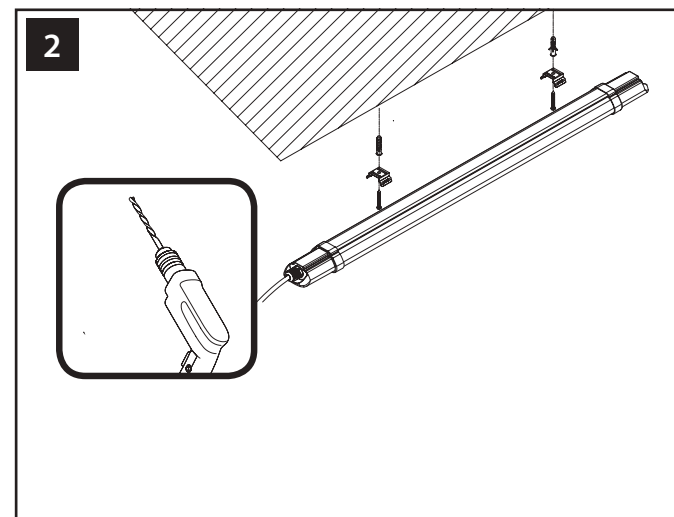
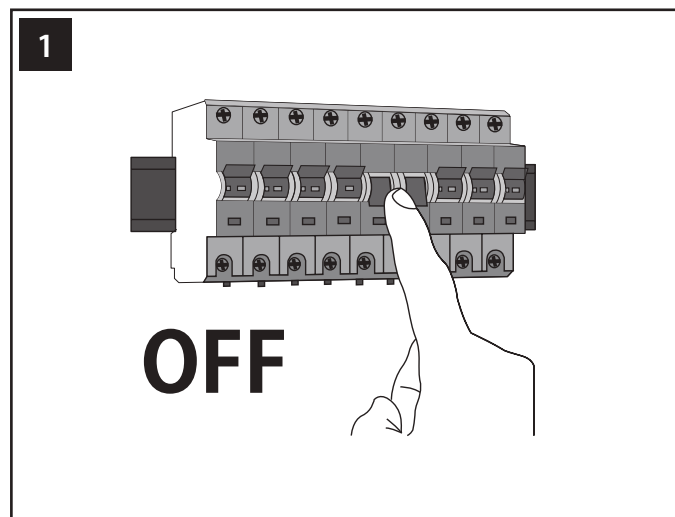
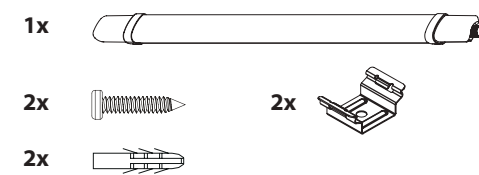




Installation instructions

IP65 LED TRI-PROOF BATTEN

Scope of delivery



Safety information

Please read this information carefully before installing or commissioning this product. You should keep these assembly instructions for future use.

This item should be fitted by a qualified electrician.

Please always observe the technical information on the nameplate and in this assembly instructions.

IP65 luminaires are dust-proof and protected against jet water and suitable for use in damp rooms. It is permitted to use and operate these luminaires in covered outdoor areas.

Caution: Before starting the installation work, disconnect the mains cable: switch off the fuse box or switch off the mains cable. unscrew the fuse. Secure against restarting.

Protection class II: This lamp is insulated.

The individual conductors of the external power supply cable must be correctly connected to the corresponding connectors (see Fig. 3):
Name of terminal blocks: L-Phase, N-Neutral conductor

Electrical connection 220-240V~to50/60Hz.

It is forbidden to change the mechanical or electrical structure of the luminaires.

Luminaires are suitable for use in rooms with ambient temperatures of -15°C – 45°C.

Luminaires must not be mounted on damp surfaces.

Make sure Sile does not damage the installation and connection cables during assembly.

The pledge of luminaires refers exclusively to the surfaces, no moisture may enter the connection tower or parts running to the grid.

In case of damage caused by non-compliance with the safety and assembly instructions, the warranty claim expires. The manufacturer assumes no liability for consequential damages resulting from this.

These assembly instructions correspond to the technical state at the time of printing. Changes in technology and equipment are subject to change. Only suitable for private use and not for commercial use.

The light source and operating device of the surrounding product cannot be replaced by the user. When the light source has reached its end of life, the entire lamp must be replaced. This product contains a light source of energy efficiency class E.

Correct disposal of this product