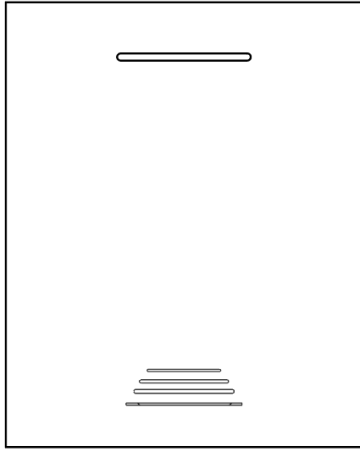
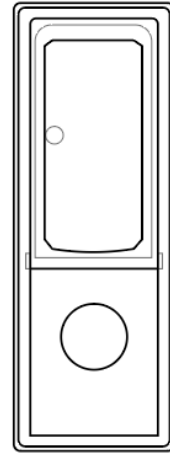


RG-120T DC doorbell



RG-120R



RG-120T

Features

- Power supply: RX 4.5V (AA1.5V x 3),TX 3V(AAA1.5 x 2)
- Transmission range:200m (inroom 150m) .
- Frequency: 433.92MHz ± 150 KHz Tolerance
- Alarm mode: Music 48
- Matching method: learning coding
- Applications: Villas, hotels, apartments, office buildings, elderly and child care

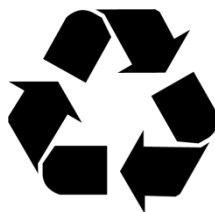
• Important

• information

- Take the time to read this user manual before using this control switch module

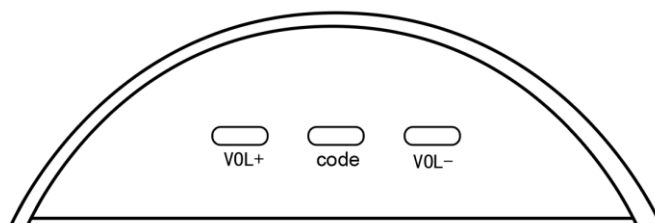
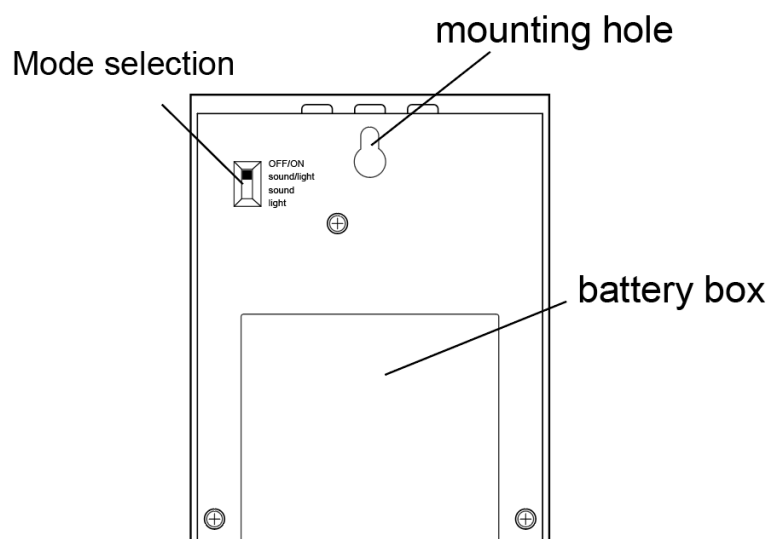
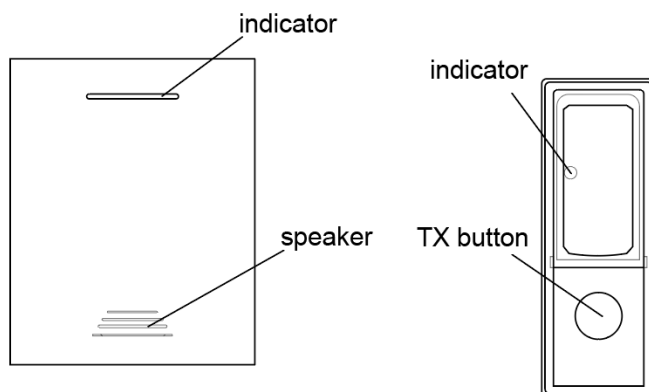


- Recycling your old device Your device is designed and manufactured with high quality materials and components that can be recycled and reused.
- If a product or its packaging has this symbol with a crossed-out wheeled container, this means that it is under the CE 2002/96 directive.
- inform your municipality about the selective classification system implemented for electrical and electronic equipment.
- Observe current regulations and do not throw your appliances in the trash, the disposal of your old appliance in accordance with these regulations helps to prevent possible negative consequences for the environment and health. Batteries should not be thrown away with domestic garbage. Return them to a collection point for used batteries.



- The <recycling materials> symbol on the plastic packaging elements indicates that these components are recyclable.
- Do not throw them away as normal household garbage.
- This symbol on the carton packaging means that the company that has put this product on the market is financially involved in the selective collection of packaging.

1.RG-001 Function diagram

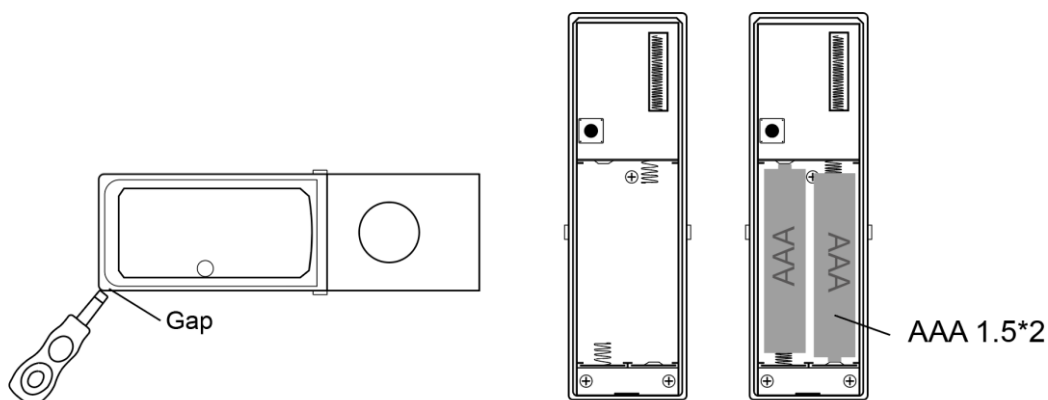


2 .Installation and configuration

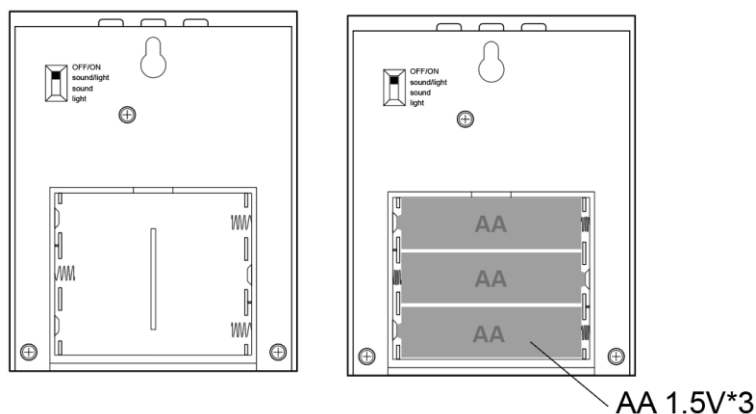
2.1. first time to use

Open the RG-120R battery box, install AA1.5V×3, and then open the RG-120T remote control battery box (rear cover) to install AAA1.5V×2 batteries.

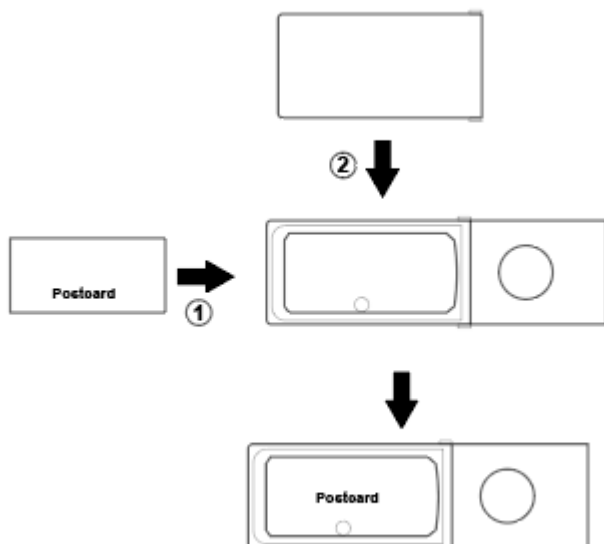
1.



.There is a notch on the top of the push button. Use the included screwdriver to pry up slightly.

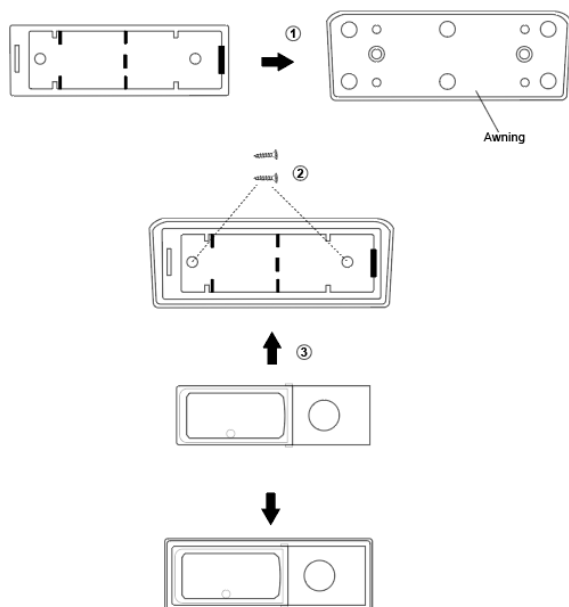


3.



The transparent cover can be removed and a business card can be inserted to let visitors know that this is the doorbell of your home ,Fully show your personality

4.



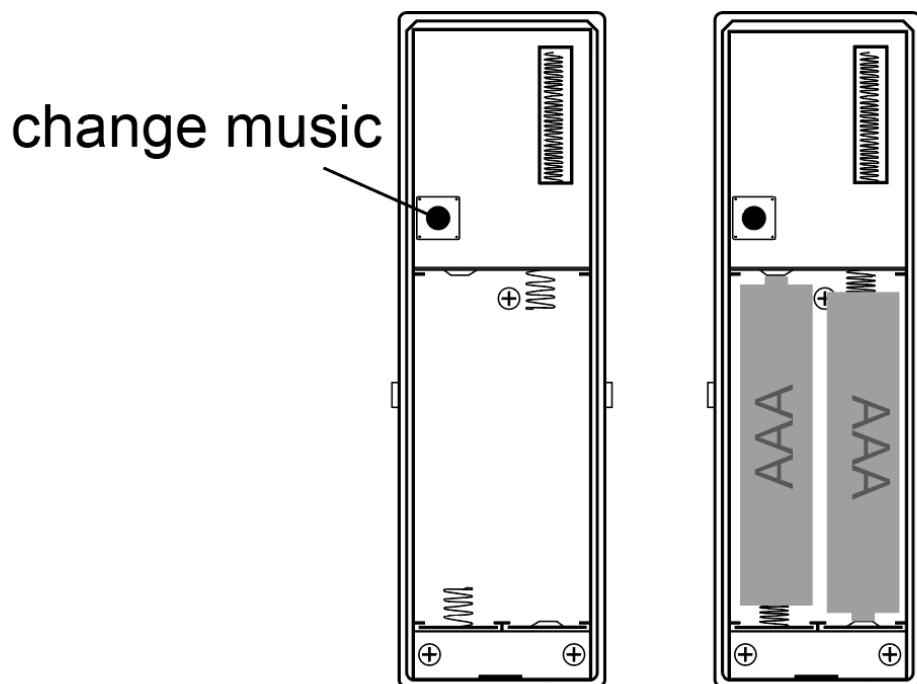
The transmitter button can be installed with double-sided stickers or screws (included). The transmitter button adopts an awning design, which is rainproof

Note:

Please install the transmitter button one meter above the ground;

Don't install the transmitter button directly on the iron door, but on the wall next to it, so as not to affect the distance of the remote control.

Don't install the transmitter button next to other electrical appliances.

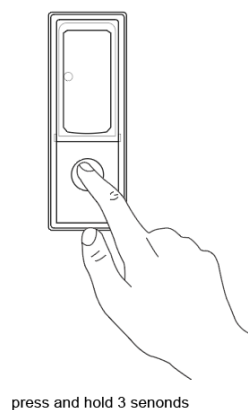
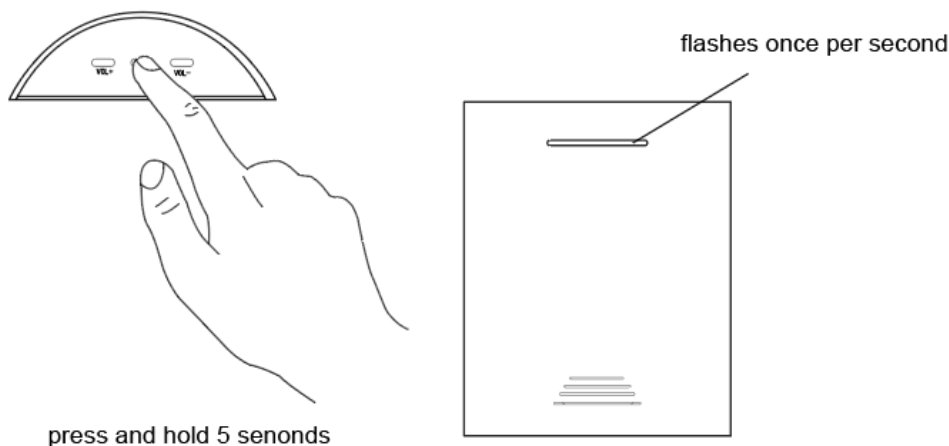


2.2 Reconfiguration of RG-120T and RG-120R.

Important note: The new factory RG-120T/R wireless doorbell transceiver has been configured, so there is no need to re-configure. You can skip this step.

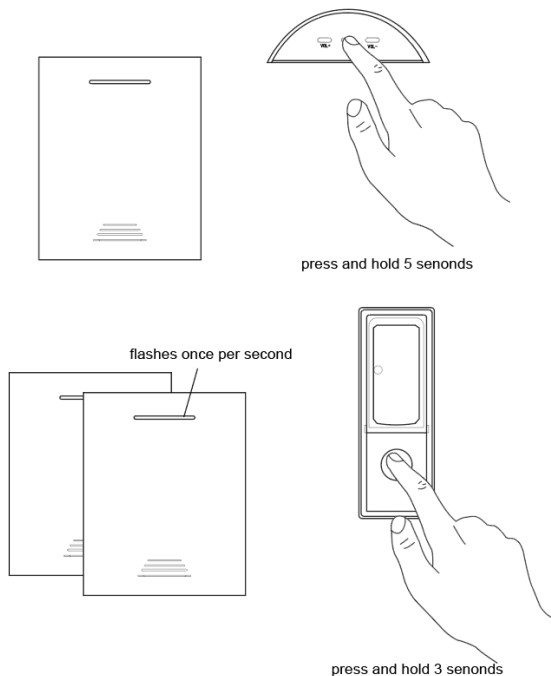
2.2.1 Reconfiguration of RG-120T/R

2.2.1.1 After installing the battery, press and hold the CODE button of the RG-120R for 5 seconds, the receiver LED indicator flashes (once per second), the receiver enters the waiting configuration state, and then quickly press the transmitter to match the receiver. When the RG-120R LED indicator is off, the configuration is complete



2.2.2 Reconfiguration of RG-120, Add second and third receivers

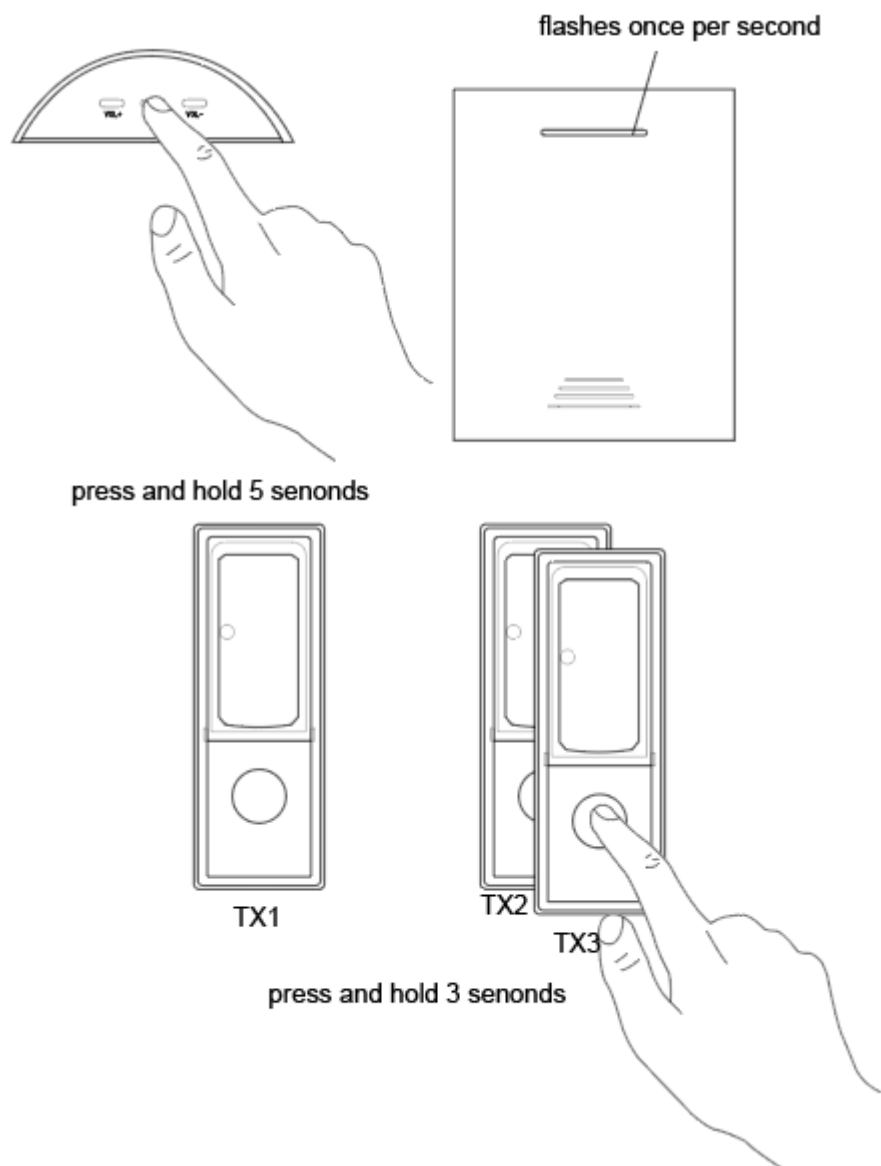
After installing the battery, press and hold the CODE button of the second RG-120R (5 seconds), the receiver LED indicator flashes (once per second), the receiver enters the waiting configuration state, then quickly press RG-120 T button, to configure with the receiver. When the RG-120R LED indicator is off, the second receiver configuration is complete. Repeat this step to complete the third receiver configuration.



2.2.3 Reconfiguration of RG-120T/R, Add Second and third transmitter .

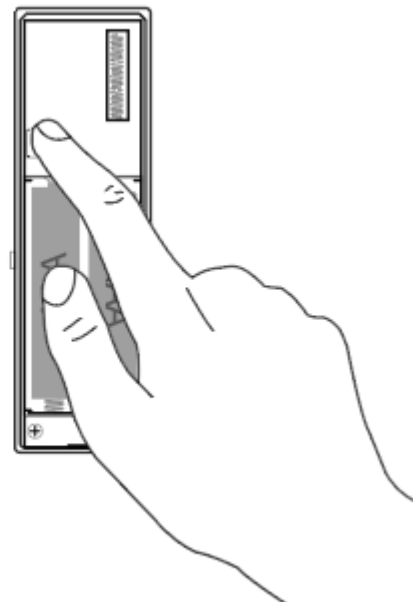
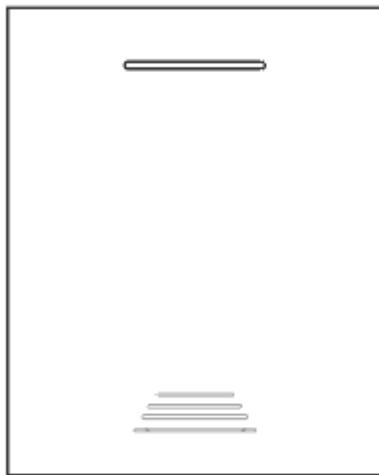
After installing the battery, press and hold the CODE button of the RG-120R for 5 seconds, the receiver LED indicator flashes (once per second), the receiver enters the waiting configuration state, and then quickly press the second RG-120T button ,to configure with the receiver. When the RG-120R LED indicator is off, the

second transmitter configuration is completed . Repeat this step to complete the third transmitter button



2.2.4 Reconfiguration of RG-120T/R, Change music

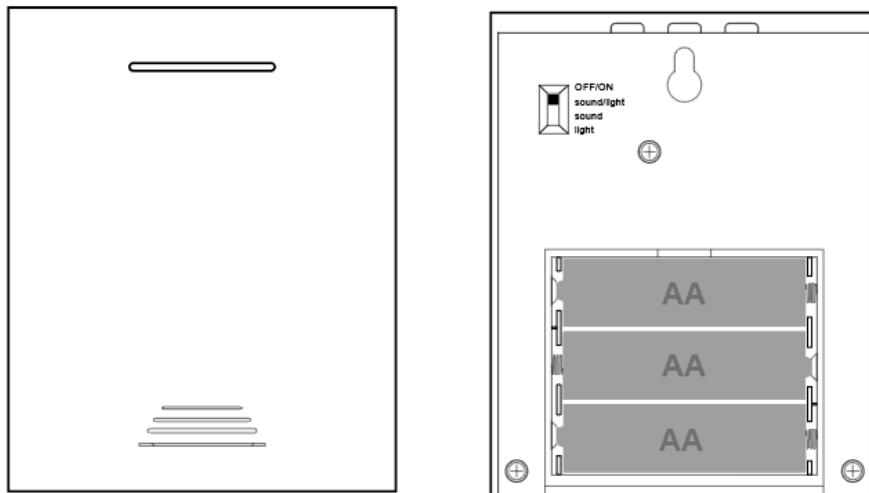
Open the back cover (battery box) of the RG-001T, and change the music every time you press the button on the PCB, There are 48 types of music.(When the song selection button is pressed for the first time, the original music will be played, and when it is pressed again, it will switch to the next song.)



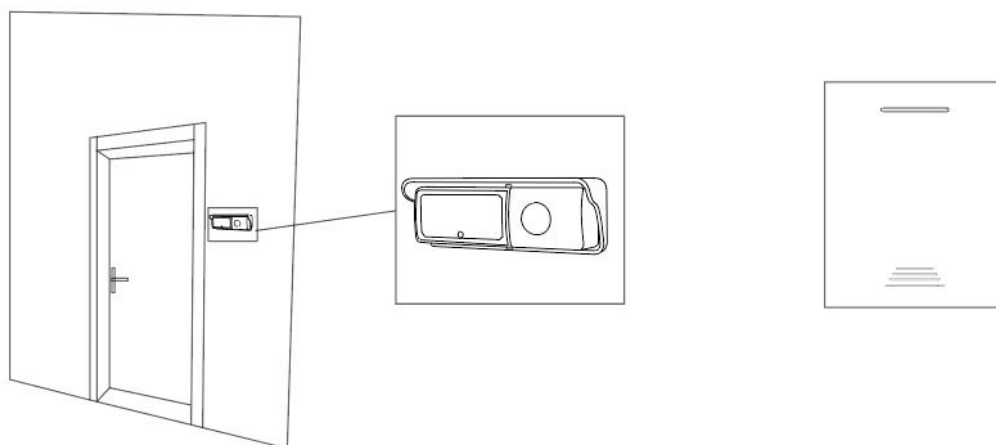
press it and change the music

2.3.RG-120T/R low voltage reminder

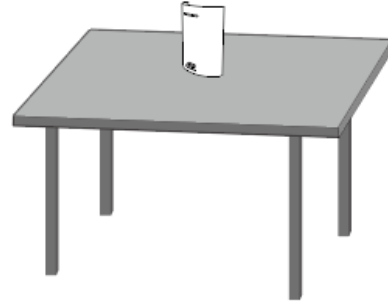
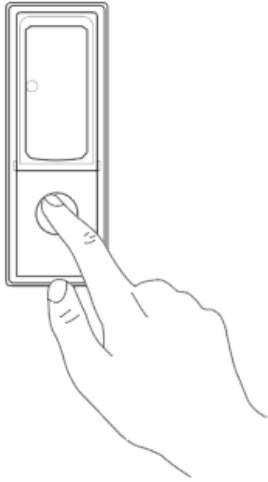
If the RG-120T is not working, when the indicator light of the RG-001R flashes (twice in 5 seconds), the receiver battery needs to be replaced.



3 . Application



Villas, hotels, apartments



office buildings

4. Technical Details

Manufacturer	NARUIGER
Part Number	RG-120T & RG-120R
Item Weighjt	RG-120R:64g, RG-120T:46g
Dimensions	RX:1000*80*27mm, TX:90*30*223mm
Item moder number	RG-120T & RG-120R
Frequency	433.92MHz \pm 150KHz Tolerance
Power Supply	RX:4.5V(AAA 1.5V*3),TX: 3V(AA 1.5V*2)
Matching Method	Learning coding
Sound source	48 types
MODE	ON/OFF; Music
Working temperature	-10-60℃
Working humidity	<90%
Status indication:	LED light
Color	RED/GREEN
Meterial:	PC-100N
Certification	CE,RED 2014/53/EU
Installation Method	Double-sided tape
Item Package quantity	1PCS
Type of bulb	LED
Coverage	200 meters
Switch Style	Magnetic switch
Included Components	Magnetic switch and transmitter
Batteries Inclcluded	TX:AAA*2 RX:AA*3
FCC ID	2AZSERG120T

FCC COMPLIANCE STATEMENT:

This device complies with part 15 of the FCC Rules.

Operation is subject to the following two conditions:

- (1) This device may not cause harmful interference, and
- (2) this device must accept any interference received, including interference that may cause undesired operation.

Note: This equipment has been tested and found to comply with the limits for a Class B digital device, pursuant to Part 15 of the FCC Rules. These limits are designed to provide reasonable protection against harmful interference in a residential installation. This equipment generates, uses and can radiate radio frequency energy and, if not installed and used in accordance with the instructions, may cause harmful interference to radio communications.

However, there is no guarantee that interference will not occur in a particular installation. If this equipment does cause harmful interference to radio or television reception, which can be determined by turning the equipment off and on, the user is encouraged to try to correct the interference by one or more of the following measures:

- Reorient or relocate the receiving antenna.

- Increase the separation between the equipment and receiver.

- Connect the equipment into an outlet on a circuit different from that to which the receiver is connected.

- Consult the dealer or an experienced radio/TV technician for help.

Warning: Changes or modifications to this unit not expressly approved by the part responsible for compliance could void the user's authority to operate the equipment.

FCC Radiation Exposure Statement

The device has been evaluated to meet general RF exposure requirement.

The device can be used in portable exposure condition without restriction.