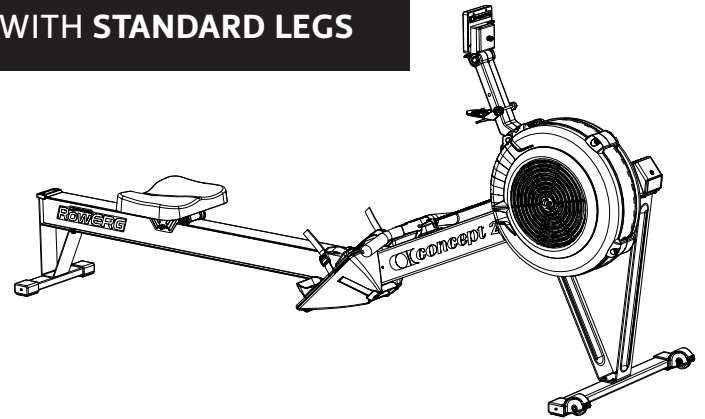


# concept 2 **ROWERG** ASSEMBLY INSTRUCTIONS

Weight: 57 lb (26 kg)  
Dimensions: 8 ft x 2 ft (244 cm x 61 cm)  
Space Required for use: 9 ft x 4 ft (274 cm x 122 cm)  
Weight Capacity: 500 lb (227 kg) as tested by Concept2\*  
\*300 lb (135 kg) as tested per European Stationary Fitness  
Equipment Testing Standard EN 20957-7

## WITH STANDARD LEGS



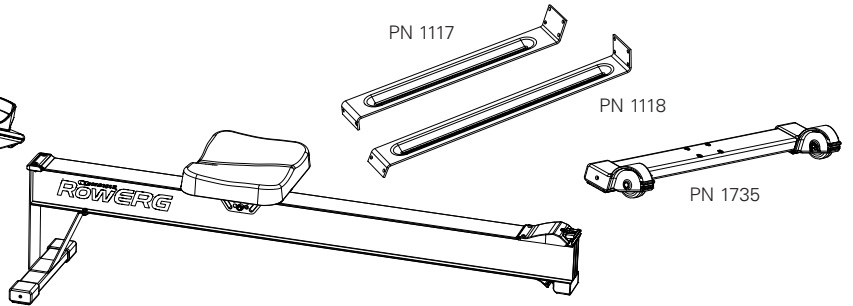
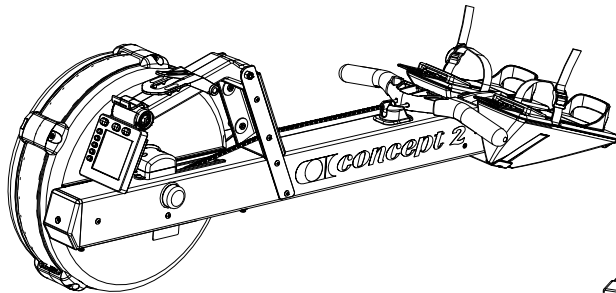
## PARTS \*not to scale



T-27 DRIVER  
PN 2230



x 8  
3/4" (1.9 cm)  
PN 2233



PN 1117

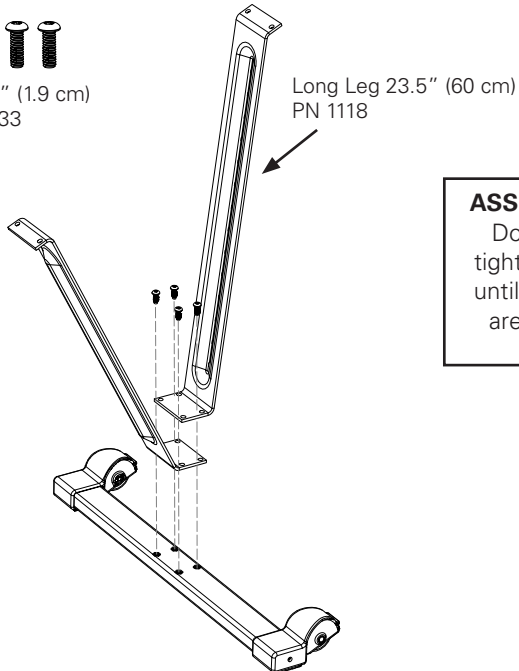
PN 1118

PN 1735

1



(4) 3/4" (1.9 cm)  
PN 2233

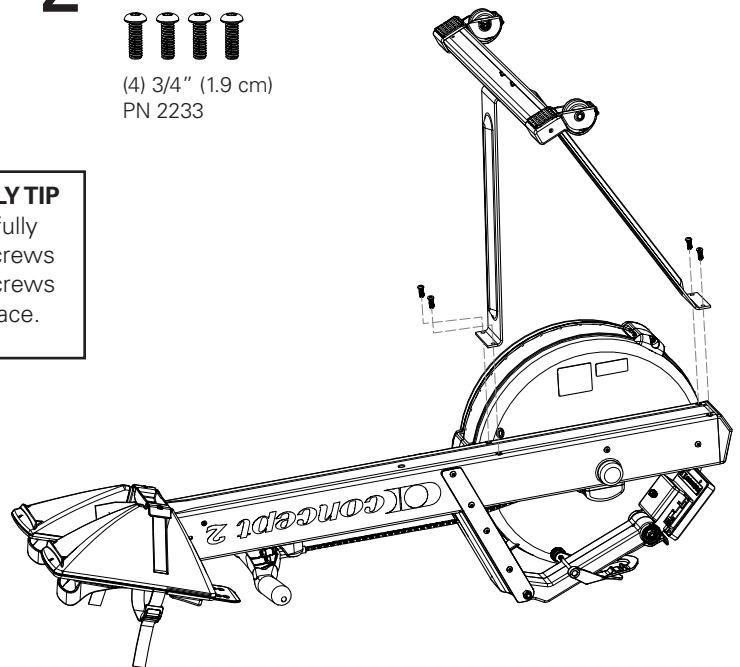


Long Leg 23.5" (60 cm)  
PN 1118

2



(4) 3/4" (1.9 cm)  
PN 2233



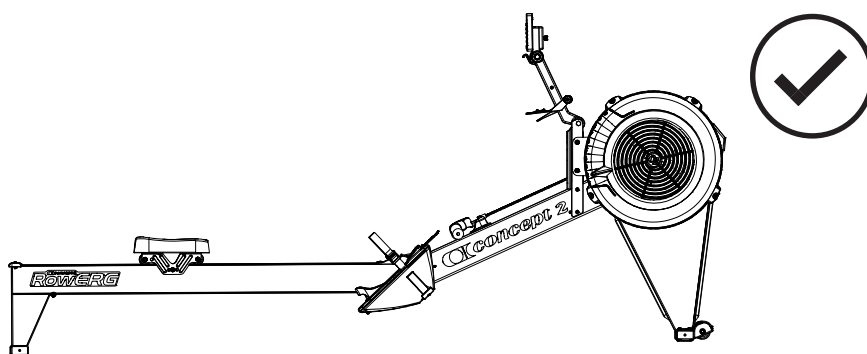
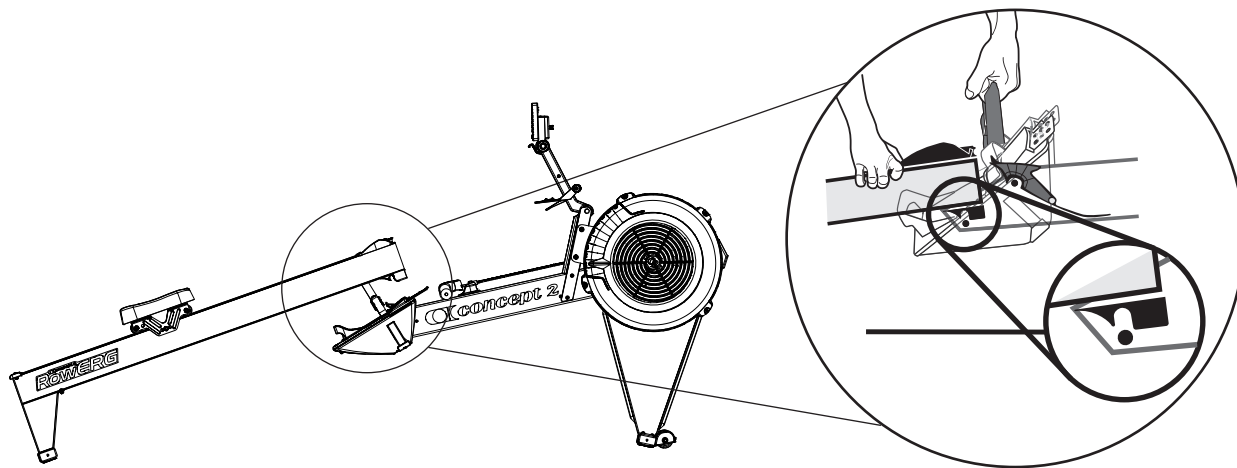
### ASSEMBLY TIP

Do not fully  
tighten screws  
until all screws  
are in place.



### Questions? Comments? Problems?

Contact Concept2 directly at **800.245.5676** (US and Canada)  
Or visit us online: **concept2.com**



## How to Use the Device Holder

