

USER MANUAL

# Cool & Warm Mist Ultrasonic Humidifier

LCD-MH-2301J

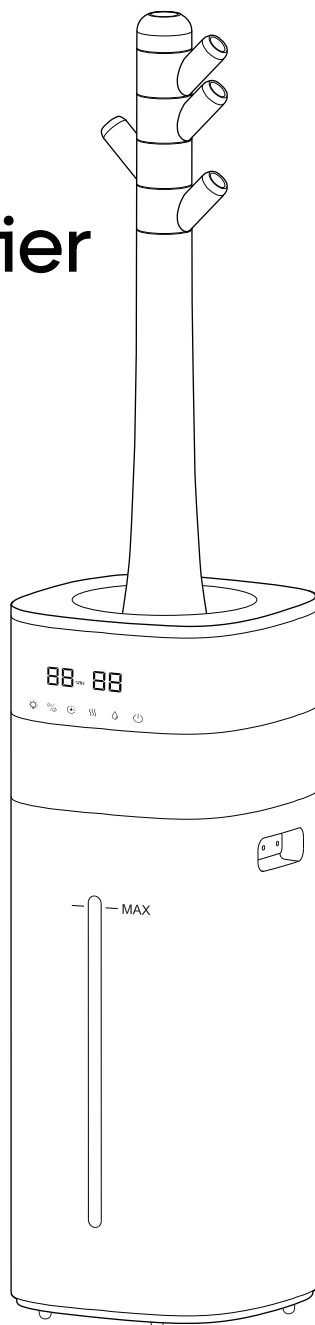
**Need Assistance?**

We're here to help!

+1 888-405-0087

support@lacidoll.com

Mon–Fri, 9 AM–5 PM (EST)





Your support means the world to us.  
We hope you enjoy our product as much as  
we enjoyed creating it.

Please read this manual carefully before use  
and keep it for future reference.

All images shown are for illustration purposes only.  
The actual product may vary due to enhancements.

# Contents

---

<b>Important Safety Instructions</b>	1-2
<b>Knowing Your Humidifier</b>	
Package Contents	3-4
Specifications	5
LED Display & Control Panel	6-8
Remote Control	9-10
<b>Using Your Humidifier</b>	
Before Use	11-12
Extension Tube	13
Filling Water	14
White Dust (Mineral Residue)	15
Adding Essential Oil	16
<b>Cleaning &amp; Maintenance</b>	
Regular Cleaning	18
Descaling Instructions	19
Aroma Pad Tray Cleaning	19
Pump Check and Replacement	20
Seasonal Storage	20
<b>Troubleshooting</b>	21-24
<b>Warranty Policy</b>	25-27

# Important Safety Instructions

---

Please read and retain the following safety instructions before using this humidifier. Always follow these basic precautions to reduce the risk of fire, electric shock, and personal injury.

## 1. General Safety

### Placement

- Place the humidifier on a firm, flat, and waterproof surface to ensure stability and prevent tipping.
- If using on a wooden floor, a waterproof mat is recommended to prevent excessive moisture buildup.
- Keep the humidifier at least **12 inches** (30 cm) away from walls or wooden furniture.
- Place the humidifier where children and pets cannot access it. Children should not operate or clean the humidifier without supervision.
- **Do not** place the humidifier near heat sources such as stoves, ovens, radiators, or direct sunlight.
- **Do not** use outdoors. Intended for indoor household use only.

### Temperature

- Before first use, let the humidifier sit at room temperature for **30 mins** to prevent potential damage to the water tank caused by sudden temperature changes.
- Operate the humidifier within a room temperature range of **41°F - 104°F** (5°C - 40°C).
- If the temperature drops below **32°F** (0°C), empty the water tank to prevent freezing and potential damage.

### Operation

- The water temperature inside the tank will heat up during the heater operation of the warm mist function. Do not touch it directly as there is a risk of burns.
- **Do not** clean the humidifier immediately after turning it off, especially if it has been diffusing warm mist. Allow the humidifier to cool down completely before cleaning.
- Avoid running it in a closed room for extended periods without supervision.

# Important Safety Instructions

---

## 2. Power and Cord Safety

- **Do not** handle the power cord or plug with wet hands.
- **Do not** damage, bend, pull, twist, bundle, or attempt to modify the power cord.
- **Do not** let power cord hang over the edge of a table or counter or touch hot surfaces.
- **Do not** immerse the humidifier main unit, power cord, or plug in water.
- Ensure the plug fits securely into the outlet to prevent overheating.
- Always unplug the humidifier before refilling, moving, cleaning, or when not in use for an extended period.

## 3. Special Precautions

### Avoid Over-Humidification

- If condensation appears on walls, windows, or around the device, turn off the humidifier or lower the mist output.

### Do Not Inhale Mist Directly

- Avoid inhaling mist directly or directing mist toward people or objects.

### Do Not Add Substances

- **Do not** add essential oils, medications, or other additives to the water tank or mist outlet, as this may damage the unit or affect health.

## 4. Maintenance and Repairs

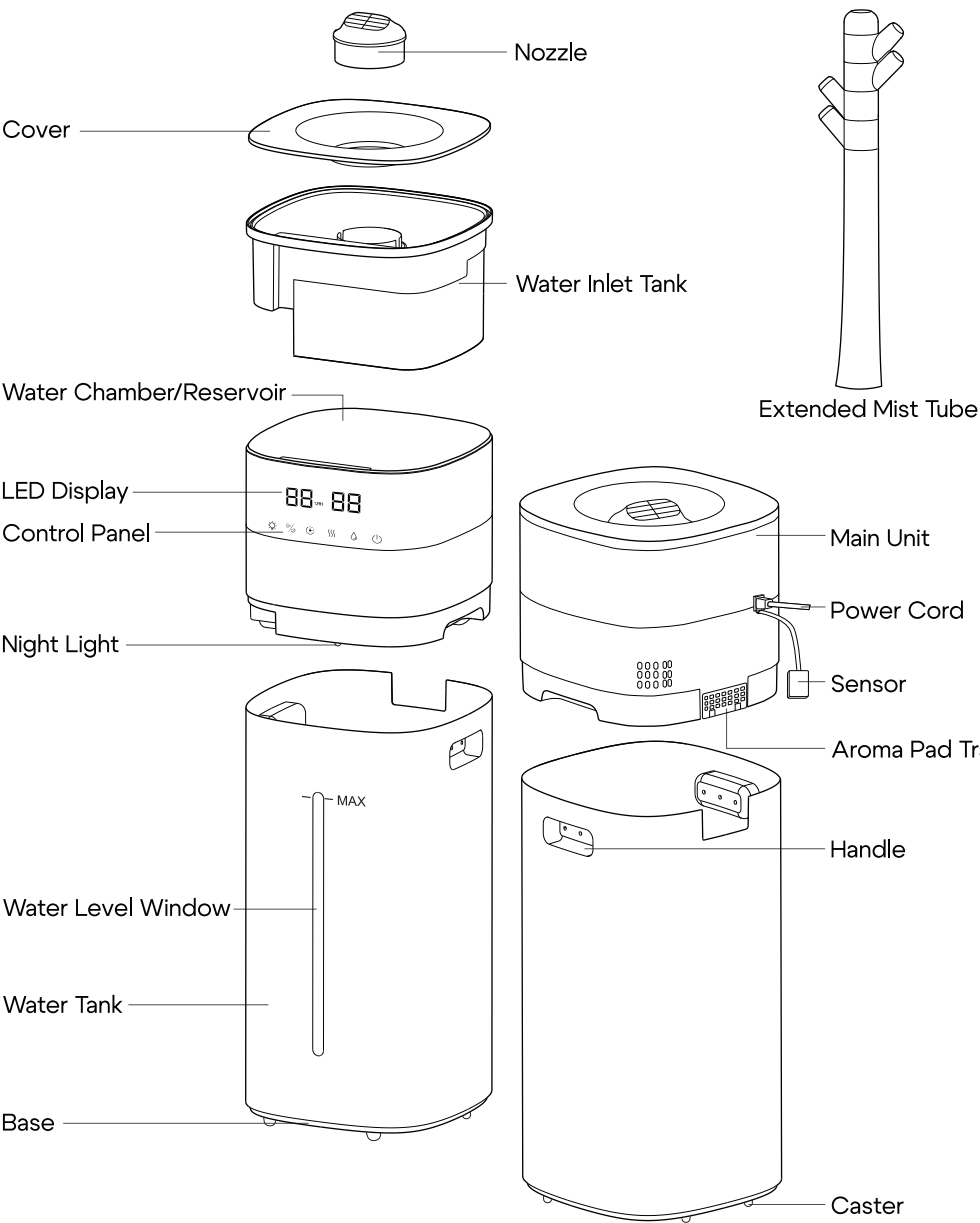
### No Self-Repair

- **Do not** disassemble, modify, or repair the humidifier yourself. Repairs should only be performed by the manufacturer or a qualified professional.

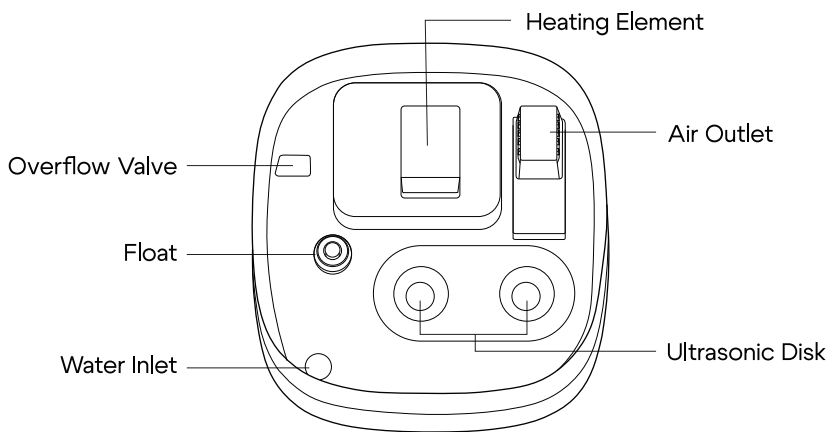
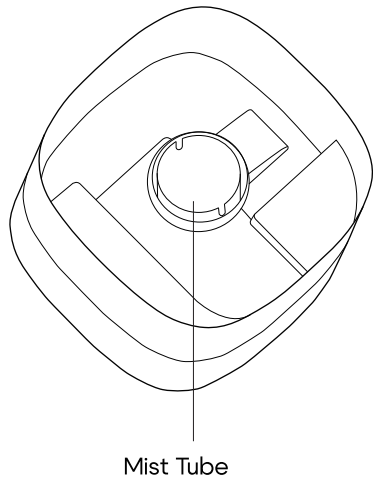
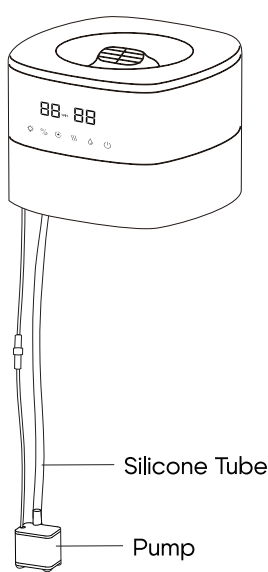
### Routine Inspections

- Regularly check the power cord, plug, and water tank for any signs of damage. If any issues are detected, stop using the humidifier and contact customer service.

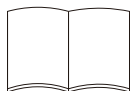
# Package Contents



# Package Contents



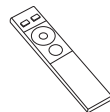
Soft Cloth



User Manual



Mineral  
Absorption Pad



Remote Control

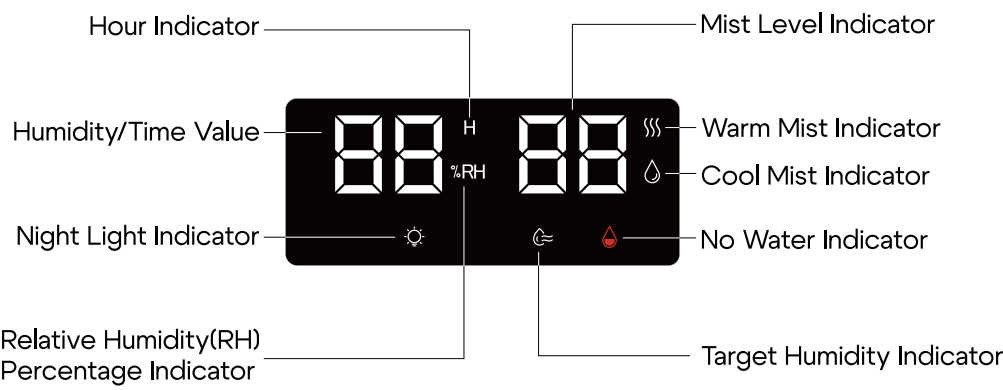


# Specifications

---

Product Name	Cool and Warm Mist Humidifier
Model Number	LCD-MH-2301J
Mist level	Low   Medium   High
Rated Power	290W (Warm Mist)
Rated Voltage	120V~
Rated Frequency	60Hz
Noise	<35 dB
Tank Capacity	5.3Gal/20L
Safety Functions	1-12 Hours Timer
	Waterless Auto Shut-off
	Automatic Shutdown When Falling

# LED Display & Control Panel



Night Light Button



Target Humidity/Sleep Button



Timer Button



Warm Mist Button



Cool Mist Button



Power Button

# LED Display & Control Panel

## **Power (ON/OFF)**

- Press the button to turn the humidifier on or off.
- If the tank is empty, the "💧" icon will blink **5 times**, and the humidifier will shut off automatically.



If the humidifier has been in storage or transit for a long time, the sensor may briefly display a "💧" warning—even when the tank is full. Restart the humidifier **2–3 times** to reset the sensor.

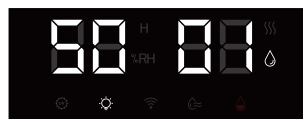
## **Timer**

- Press the button to set your desired time (adjustable between **1-12 hours**).
- The "H" icon on the screen will light up.
- To cancel or reset the timer, press the button repeatedly until the screen displays "00".
- The timer function is off by default when the humidifier is turned on.



## **Night Light**

- Press the button to enable or disable night light function.
- The "💡" icon on the screen will light up.
- The night light function is on by default when the humidifier is turned on.



## **Cool Mist**

- Press the button to enable cool mist function.
- Press repeatedly to cycle through mist level settings: high(03), medium(02), and low(01) mist.



The room may be too humid if you see water pooling near the humidifier. Lower the mist setting to avoid excess moisture.

# LED Display & Control Panel

---

## ))) Warm Mist

- Press the button to enable warm mist function.
- Press repeatedly to cycle through mist level settings: high(☁☁), medium(☁), and low(☁) mist.
- The humidifier may take **15 min** to warm up before producing warm mist.



Mist may be hot. **Do not** place your bare hands, face, or other exposed skin over the nozzles while using warm mist.

## ☾ Sleep Mode

- Press and hold for **3s** to turn sleep mode on.
- When sleep mode is enabled, the screen will flash several times and then turn off. Press any button to reactivate the screen.
- The sleep mode function is off by default when the humidifier is turned on.



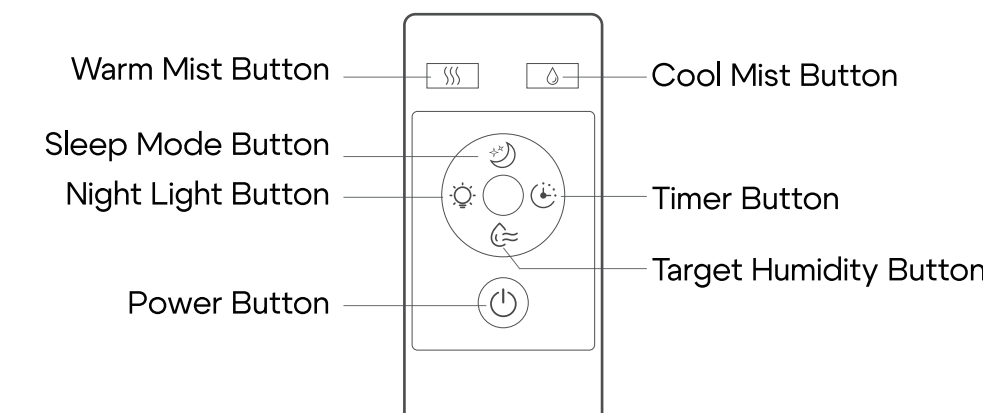
## ☁ Target Humidity

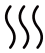






- Press the button to set your desired humidity level (adjustable between **40%-90%**).
- The "☁" icon on the screen will light up.
- To cancel this function, press the button repeatedly until the screen displays "--".
- The target humidity function is off by default when the humidifier is turned on.




- A comfortable humidity range is **40%–60%**.
- After setting a target humidity, the display will show the **current ambient humidity**, not the target.
- The humidifier will automatically pause misting when reaching target humidity and resume when humidity falls below the set level.

# Remote Control



	<b>Warm Mist Button</b> Turn the warm mist on and adjust mist level.
	<b>Cool Mist Button</b> Turn the cool mist on and adjust mist level.
	<b>Sleep Button</b> Enable or disable the sleep mode.
	<b>Night Light Button</b> Control the night light function.
	<b>Timer Button</b> Set the misting duration ( <b>1–12 hours</b> ).
	<b>Target Humidity Button</b> Adjust the desired humidity level ( <b>40%–90%</b> ).
	<b>Power Button</b> Turn the humidifier on or off.



For safety during transportation, the remote control does not include batteries. Please install **AAA 1.5V batteries** before use.

# Remote Control

---

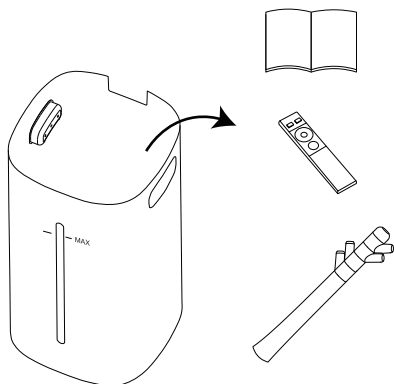
## Battery Safety Instructions

- ❗ Install dry batteries strictly according to the polarity indication (+ and -) in the battery compartment.
- ❗ Incorrect installation may cause device malfunction or battery leakage.
- ❗ **Do not** mix new and used dry batteries, or different brands/types (e.g., alkaline, carbon - zinc). Mixed use may reduce performance and increase leakage risk.
- ❗ Replace depleted dry batteries promptly. Recycle or dispose of used batteries following local regulations. **Do not** discard them in household trash.
- ❗ If battery leakage occurs, remove batteries from the remote control immediately and keep them away from the device. If skin or eyes contact the leakage, rinse with clean water thoroughly and seek medical help if needed.

# Before Use

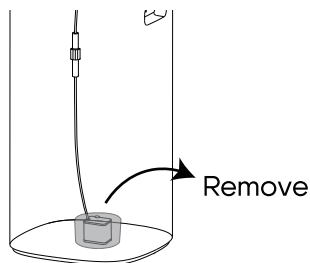
When using your humidifier for the first time, remove the wraps and follow the steps below.

1



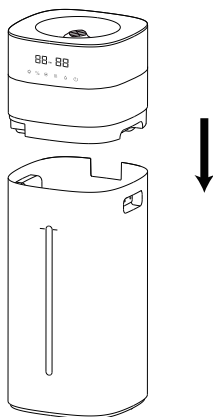
Remove the tube, remote control, and user manual from the water tank.

2



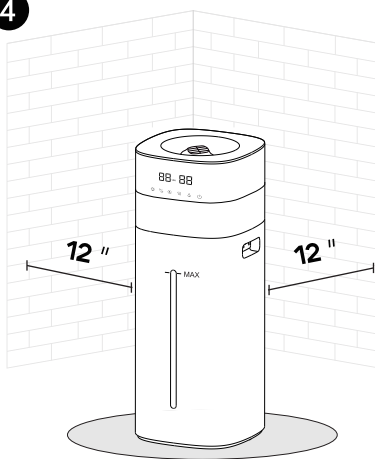
Remove the protective packaging from the water pump.

3



Place the main unit onto the tank. No need to secure the water pump to the bottom of the tank.

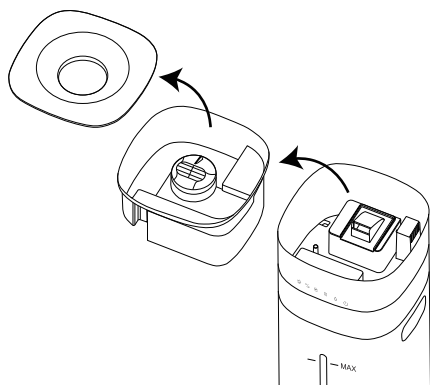
4



Place on a flat surface **12+ inches** from walls. Use a waterproof mat underneath to catch spills.

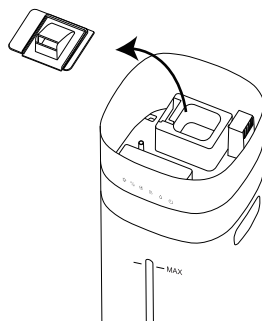
# Before Use

5



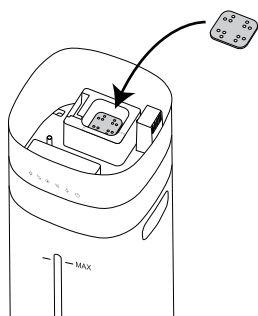
Remove the top cover and water inlet tank.

6



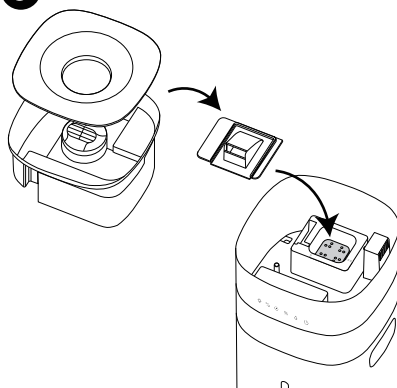
Remove the heating element cover.

7



Place a mineral absorption pad into the heating element slot.

8



Reattach the heating element cover, water inlet tank, and top cover.

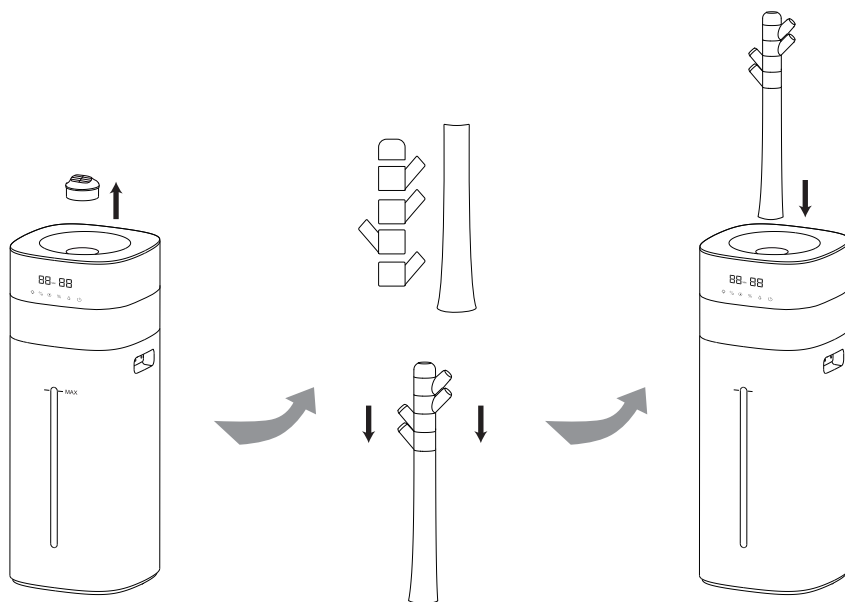


- The mineral absorption pads help reduce mineral buildup (scale) inside the humidifier, especially on the heating element.
- The absorption pads shall be cleaned and replaced regularly.



# Extension Tube

If you want to increase the mist height or extend the mist range, please install the included extension mist tube.



- ❶ Remove the mist nozzle.
- ❷ Assemble the extension mist tube.
- ❸ Place the extension mist tube onto the mist outlet.



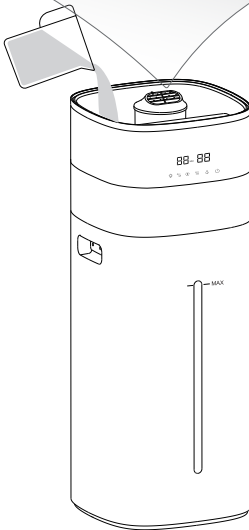
- The extension tube should simply be placed on the mist outlet; there is no need to secure it tightly, allowing for easy adjustment of the mist direction at any time.
- If water droplets collect on the edge of the extension tube, it indicates that the humidity may be too high. It is recommended to lower the humidity setting or adjust the mist level.

# Filling Water

There are two ways to add water:

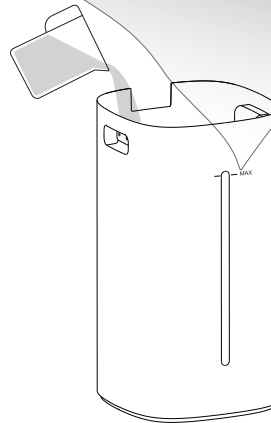
## ① Top Fill

⊘ Do not add water through the mist nozzle.



## ② Bottom Fill

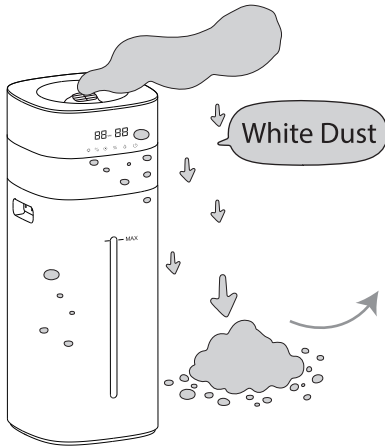
⊘ Do not fill past the MAX line.



## Note

- ❗ Use **purified or distilled water** to minimize white dust accumulation.
- ❗ Place a **waterproof mat** beneath the humidifier to contain spills.
- ❗ Fill with **room-temperature water** only - never use hot water, boiling water, or other liquids.
- ❗ Avoid pouring water through the **mist outlet** to prevent internal damage and operational failure.
- ❗ Never add **essential oils** directly to the water tank as this may damage the tank components.

# White Dust (Mineral Residue)

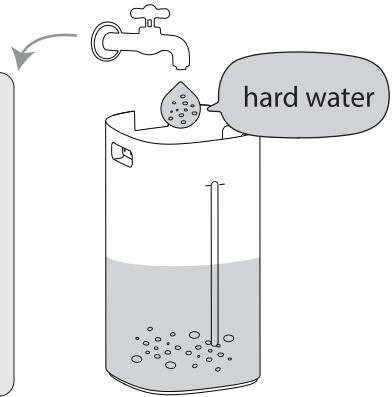


## What Is White Dust?

White dust, also called mineral residue, is a powdery buildup that can appear near your humidifier. It's caused by minerals (like calcium and magnesium) in your water—a common issue in areas with "hard water." The harder your water, the more likely you'll see this dust.

## Why Does It Happen?

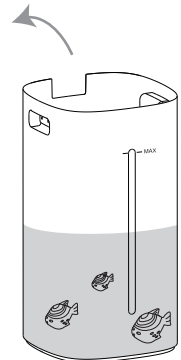
- The humidifier doesn't create this dust—it simply releases minerals that are already in your water.
- If you live in a hard water area, switching to distilled water can greatly reduce or even eliminate white dust.
- It's a natural process, not a problem with your humidifier.



## How To Reduce It?

The demineralization cartridge can minimize white dust buildup.

- Replace the cartridge **every 30-40** water refills
- Replace more often if you have very hard water
- Switch to distilled water if dust persists after replacement
- To purchase replacement cartridges, contact our customer support team.

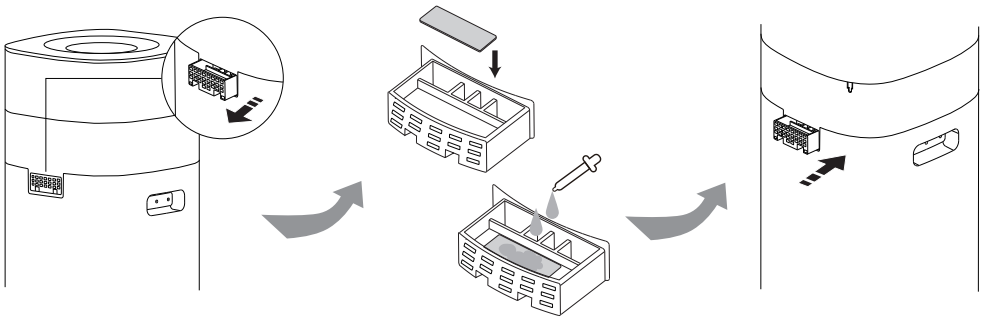


## Still Experiencing Issues?

Contact our customer support team.

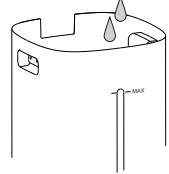
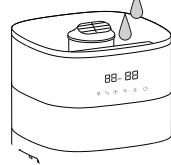
# Adding Essential Oil

- 1 **Locate & Remove** - Press and slide out the aroma pad tray.
- 2 **Insert Pad** - Place an aroma pad inside the tray.
- 3 **Add Oil** - Add **2-5 drops** of essential oil directly onto the pad.
- 4 **Reinsert** - Slide the aroma pad tray back into place securely.
- 5 **Activate** - Turn on the humidifier to release scented mist.



- **Only use the aroma pad**

Never add oils directly to the tray, water tank or other components.



- **No pad?**

Use a same-sized sponge or folded paper towel as a substitute.

- **Scent intensity**

This humidifier is not a dedicated diffuser; fragrance will be subtle.

# Cleaning & Maintenance

---

## Before You Begin

- Always unplug the unit before maintenance.
- Work on a waterproof surface.

## ✔ Cleaning Do's

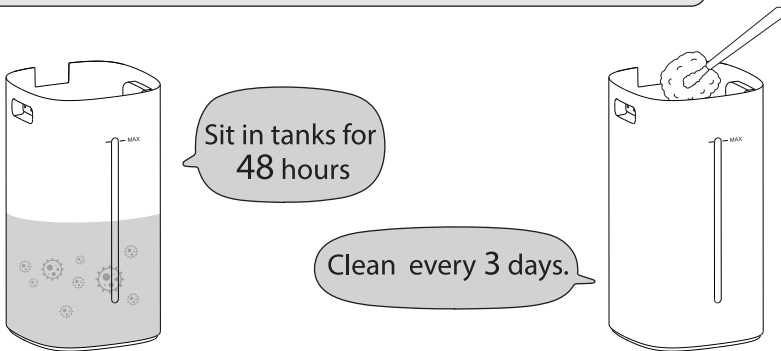
- Wipe surfaces with a damp cloth.
- Clean the mist nozzle regularly with a soft tissue
- Change water regularly to prevent bacteria.
- For storage: Empty all water and dry completely.

## ✘ Cleaning Don'ts

- Never submerge or rinse the main unit.
- Keep water away from air outlet.
- Avoid using detergents, gasoline, thinners, solvents, or other chemicals for cleaning.

## Mold Buildup

Mold spores naturally exist in air and water.  
When water sits in tanks for **>48 hours**, spores multiply rapidly.



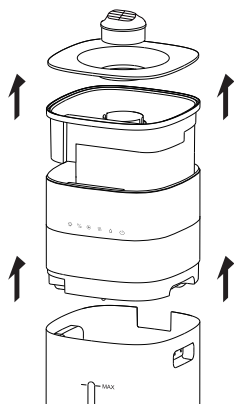
Regular cleaning is one of the most important steps you can take. According to the Environmental Protection Agency (**EPA**), homeowners should clean their humidifiers at least every **3 days** to prevent mold buildup.

- Use distilled or demineralized water (reduces mineral deposits that mold thrives on).
- Dry the tank completely between uses.
- Deep clean weekly with white vinegar.

# Cleaning & Maintenance

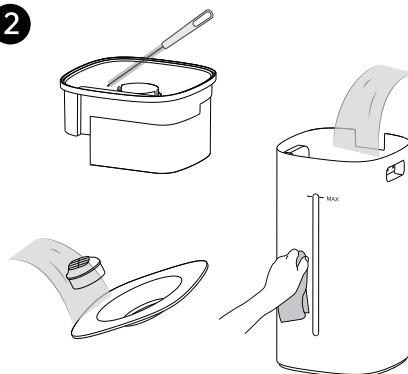
## 1. Regular Cleaning

1



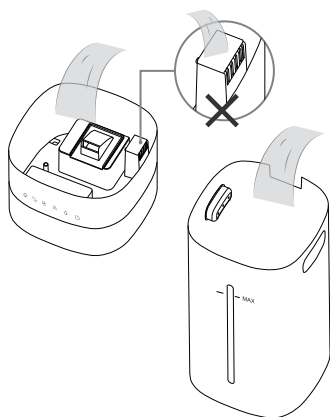
Remove the humidifier main unit from the water tank and empty any remaining water.

2



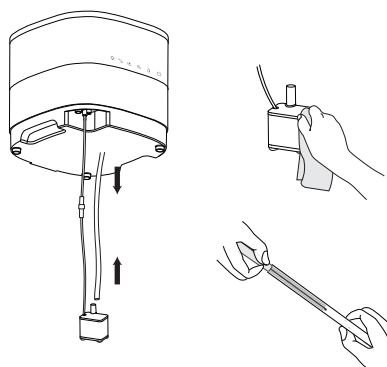
Clean the water inlet tank, and water tank using a soft cloth or brush.

3



Gently clean the water chamber interior with a soft brush, ensuring no water enters the air outlet.

4



Clean the water pump with a soft brush and use a long, narrow brush to clean the silicone tube.

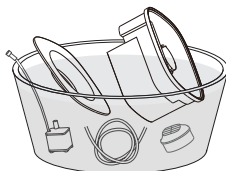
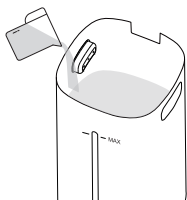
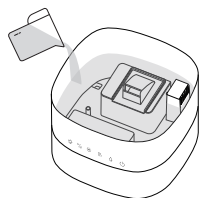


**Note:** Ensure all parts are **fully dry** before reassembling or storing the humidifier.

# Cleaning & Maintenance

## 2. Descaling Instructions

⌚ 20-30Min



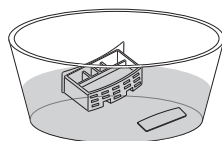
- 1 Pour **white vinegar** into the **water chamber** and **water tank**.
- 2 Soak the **water inlet tank**, **water pump** and **silicone tube** in white vinegar.
- 3 Let the solution sit for **20-30 minutes**.
- 4 Scrub away scale buildup with a **soft cloth or brush**.
- 5 **Rinse thoroughly** with clean water



- **Do not** allow water to enter the **air outlet** during cleaning.
- Avoid harsh scrubbing of the **ultrasonic disk** to prevent damage.
- White vinegar may leave a **slight odor**—ensure proper ventilation and let all parts **air-dry completely** before reuse.
- **Citric acid** can be used as an alternative descaler; follow the product instructions for proper usage.

## 3. Aroma Pad Tray Cleaning

- 1 Push and pull out the aroma pad tray from the back of the humidifier.
- 2 Rinse the tray and pad with water and dry it before placing it back.

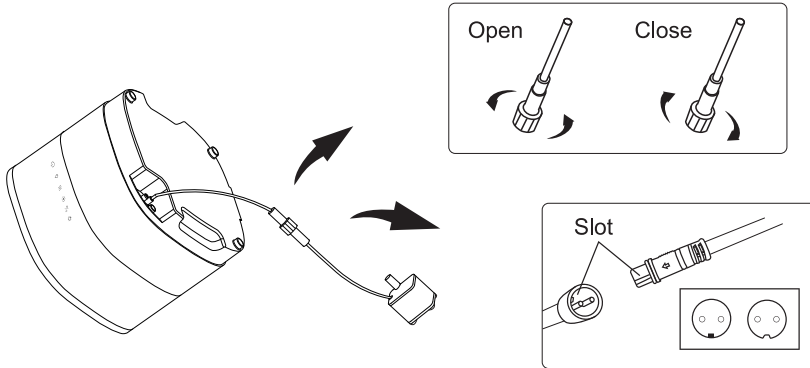


- If the aroma pad remains stiff after cleaning, it needs to be replaced.
- **No pad?** Use a same-sized sponge or folded paper towel as a substitute.

# Cleaning & Maintenance

## 4. Pump Check And Replacement

If the water pump stops working, first try removing and reinstalling it.



- ❶ **Disconnect:** Turn the locking nut counterclockwise, hold the cable near the connector, and firmly pull to separate the plug (pin end) from the socket (jack).
- ❷ **Reconnect:** Align the plug and socket, push in until secure, then tighten the locking nut clockwise.



- If the pump is damaged, contact our customer support team to purchase a replacement.
- Still experiencing issues? Contact our customer support team.

## 5. Seasonal Storage

- Before storing the humidifier at the end of the season, follow the above cleaning steps.
- Ensure all parts are completely dry before storing.
- Pack the unit securely and store it in a cool, dry place.



# Troubleshooting

---

## No Power / Unable To Turn On

- **Check Power Supply**

Make sure the humidifier is plugged into a working electrical outlet.

- **If Recently Cleaned**

Water may have entered the unit during cleaning, preventing startup. Place in a well-ventilated area to dry for at least **24 hours** before retrying.

- **Still Getting Weak Mist?**

Contact customer support.

## Low Mist Output

- **Check Water Level**

Make sure the tank is filled with enough water.

- **Adjust Mist Settings**

Turn up the mist level if set too low.

- **Check Humidity Setting**

In Auto Mode, misting stops when target humidity is reached, increase mist level or raise target humidity setting.

- **Clean Ultrasonic Disk**

If clogged, follow cleaning steps in "Descaling Instructions" (**Page 19**)

- **Still Getting Weak Mist?**

Contact customer support.

## Mist Escaping From The Water Tank

- **Check Tank Installation**

Ensure the tank is properly placed.

- **Adjust Mist Level**

Reduce the mist output to prevent excessive mist buildup.

# Troubleshooting

## No Mist Output With Red Light Flashing

- **Water Level**

Ensure water tank is adequately filled.

- **Sensor Reset**

After long storage/transit, sensor may falsely show "💧".

Restart unit **2-3 times** to recalibrate.

- **If Issue Persists**

- **Inspect Water Pump**

If failing to move water from tank to water chamber:

Follow "Descaling Instructions" & "Pump Check And Replacement" (Page 19-20) procedures.

- **Check Main Unit Float**

Clean with cotton swab if stuck to verify float moves freely up/down.

- **Examine Ultrasonic Disk**

Clean per "Descaling Instructions" (Page 19) if clogged.

Pour water into water chamber while powered on - check for mist production.

- **Still Not Working?**

Contact customer support for pump or main unit replacement options.

## Insufficient Humidification

- **Adjust Mist Level**

Increase the mist output.

- **Check Room Size**

If the room is too large, the humidifier may not effectively increase humidity. Consider using a larger unit.

- **Check Environmental Humidity**

If the air is very dry, it may take longer for humidity levels to rise.

# Troubleshooting

---

## Inaccurate Humidity Reading

- **Normal Range**

A difference of **5–10%** between displayed and actual humidity is normal.

- **Check The Humidity Sensor**

Ensure the sensor is free from dust or moisture; wipe it dry if necessary.

- **Check Placement**

Avoid placing the humidifier in corners or near walls. Ensure good airflow.

- **For Large Errors**

If the humidity reading is significantly inaccurate, contact customer support.

## Water Leakage

- **Inspect Water Tank**

Check for cracks/damage.

Never fill water past the MAX line.

- **Verify Placement**

Place on perfectly flat, level surface.

## Water Accumulation Around Unit

- **Check Humidity Settings**

If set too high, excess moisture may form

Use extension tube / Reduce mist level.

For smallest settings: Move to larger space or use waterproof mat.

- **Verify Placement**

Place on flat, stable surface.

Keep minimum **12 inches** from walls/furniture for proper airflow.

- **Inspect Water Tank**

Ensure proper installation to prevent leaks.

Never fill past MAX water line.

# Troubleshooting

## Scale buildup / Unpleasant Odor

- **Clean Regularly**  
Clean the water tank and main unit frequently to remove scale buildup.
- **Use White Vinegar**  
Soak parts with mineral deposits in distilled white vinegar for **20–30 minutes**, then rinse thoroughly.
- **Check The Aroma Pad**  
If using essential oils, clean or replace the aroma pad regularly.  
See the "Aroma Pad Tray Cleaning" (Page 19) section for details.

## White Mist Or White Dust

- **Check Water Quality**  
Use purified or distilled water instead of tap water with high mineral content.
- **Clean The Humidifier**  
Regularly clean the water tank and base to remove mineral deposits.  
See the "White Dust" (Page 15) section for details.

## Furnace Malfunctions

- **Tap Water Minerals Dispersed As "White Dust" Can:**  
Clog furnace air filters faster.  
Coat sensitive sensors/electronics.
- **How To Prevent It**
  - ✔ Only use distilled/demineralized water.
  - ✔ Replace furnace filter monthly during humidifier use.
  - ✔ Wipe down furnace exterior weekly.

## Noisy Sound

- A slight noise during water intake is normal.
- If the noise is excessive, Contact customer support.

# Warranty Policy

---

## Warranty Coverage

- We warrant to the original purchaser that this product shall be free from defects in material and workmanship under normal use and conditions for a period of **1 year** from the date of purchase.
- During the warranty period, we will, at its sole discretion, repair or replace the product if such defects occur.

## Warranty Exclusions

This warranty does not cover the following:

- Unauthorized repairs/modifications: Any repair, modification, or disassembly not authorized by the manufacturer voids the warranty.
- Misuse or abuse: Damage caused by accidents, misuse, improper maintenance, or failure to follow instructions in the user manual.
- Commercial use: Products used for commercial, rental, or non-household purposes.
- Normal wear & tear: Deterioration due to regular use or consumable parts (e.g., filters, bulbs).
- External factors: Damage from natural disasters, shipping, power surges, or other external causes.
- Unauthorized sellers: Products purchased from unauthorized dealers or distributors.

## Warranty Claim Process

If your product exhibits a defect during the warranty period:

- **Contact Customer Support**  
Provide the product model, proof of purchase (invoice/order number), and photos/videos of the issue.
- **Repair or Replacement**  
We will evaluate the claim and provide a repair or replacement if eligible.

## Product Registration


- To streamline warranty services, register your product promptly on our official website.


# Warranty Policy


---


## Customer Support

For warranty claims or inquiries

 +1 888-405-0087

 [support@lacidoll.com](mailto:support@lacidoll.com)

 Mon–Fri, 9 AM–5 PM (EST)



## Important Notes

- Voiding conditions**  
Unauthorized repairs, use of chemicals/oils, or improper cleaning void the warranty.
- Safety alert**  
Discontinue use and contact support if the product exhibits abnormal noise, odors, or malfunction.
- Your Rights**  
This warranty provides specific legal protections. Additional rights may apply under your state's consumer laws.

# Warranty Policy

---

Model	LCD-MH-2301J		
Warranty Period	Within 1 year from the date of purchase		
Order Placed	Month	Date	Year
Sold by			
Order Number			
Customer	Name		
	Address		
	Phone Number		

