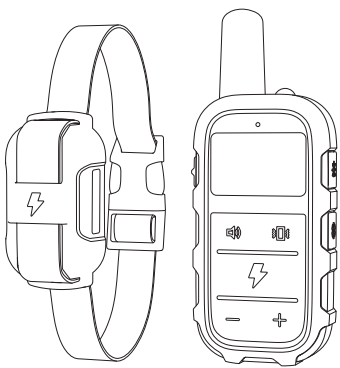


尺寸：118x80mm

# User Manual

## Ver-C1.0



Thank you for purchasing this product. To ensure properly use and trouble-free operation, please read this manual carefully and store it in a safe place for future reference.

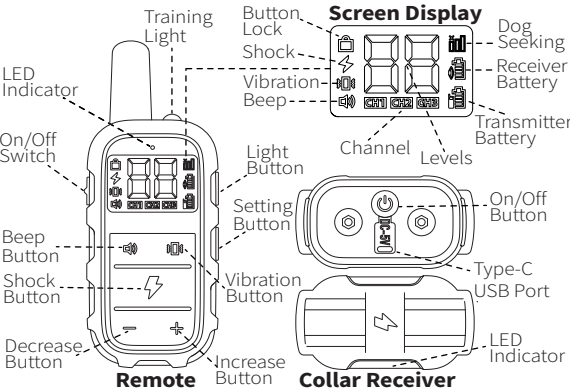
### PACKAGE CONTENTS

- 1 X Remote
- 1 X Collar Receiver
- 1 X Power Adapter
- 1 X Contact Point Tool
- 1 X Spare Part Kit
- 1 X USB Charging Cable
- 1 X User Manual

### TECHNICAL SPECIFICATIONS

- Input voltage: DC 5V
- Input current: 1000mA
- Standby power : <0.5W
- Operating temperature: 14~113 °F (-10~45°C)
- Please use the original adapter

### PRODUCT OVERVIEW



### OPERATING INSTRUCTIONS

- 1. Remote Power On/Off**  
Switch the ON/OFF Button to on/off the remote.
- 2. Collar Receiver Power On/Off**  
Press & hold Button until the green light is on to turn on. Press & hold Button until the red light is on to turn off.
- 3. Lock/unlock the Remote buttons**  
Press and hold button to lock/unlock the buttons. The buttons are invalid when the shown on the screen. It will unlock after the remote restart.
- 4. Switching Training Modes**  
Press button to switch the training functions in sequence for shock , vibration and beep . It will not activate during switching. Press **+**/**-** button to increase/decrease the vibration/sound/shock level, it will not activate during adjustment.
- 5. Vibration Training Mode**  
Press button to activate the vibration training. The vibration level shows on the screen. **Adjust the level:** Press **+**/**-** button to increase/decrease the vibration level (0~10 levels), the vibration will not activate during adjustment.

- 6. Beep Training Mode**  
Press button to activate the beep training. The beep sound level shows on the screen. **Adjust the level:** Press **+**/**-** button to increase/decrease the sound level(0~2 levels),the beep will not activate during adjustment.
- 7. Shock Training Mode**  
Press button to activate the shock training. The shock level shows on the screen. **Adjust the level:** Press **+**/**-** button to increase/decrease the shock level(0~99 levels),the shock will not activate during adjustment.
- 8. Light Training Mode**  
Press button to turn on/off the training light on the remote.
- 9. Dog Seeking Mode**  
Press and hold button 2 seconds to enter/quit the dog seeking mode. The icon on the remote screen and the white light on the receiver keep flashing when it's in dog seeking mode.
- 10. Power Recharge**  
1) Remote: Please recharge the remote when the on the screen is flashing.

Collar Receiver : Please recharge when the LED indicator red light keep flashing. It's charging when the Red light is continuous on. It's fully charged when the Green light is continuous on.

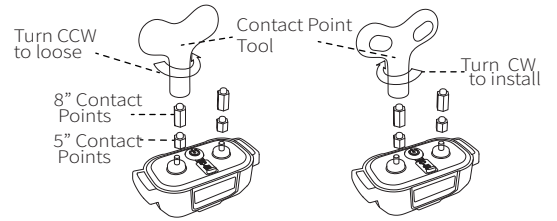
**11.Switching Channel**  
Press and hold button ,and short press the button at the same time to switch the receiver channel in sequence **CH1 CH2 CH3** .

**12. Pairing Method**  
1) Turn the collar receiver off. Press and hold button for 10 seconds until it vibrate and the LED indicator keep flashing Green light.  
2) Turn the remote on. Switch to the channel you prefer. Keep the remote close to the collar receiver and press button.  
3) When the collar receiver connect successfully, it will beep 3 times with green light flashing.

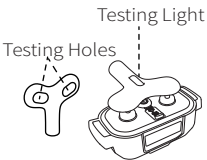
**13.For Multiple Receivers**  
One Remote can connect with up to 3 Receivers. The icons **CH1 CH2 CH3** on the screen indicate the connection of the receivers. When the icon shown on the screen, it means the receiver it stand for is activate.

### INSTALLATION & TESTING

- 1. Contact Point Installation**  
1)Select the contact points based on the size of your dog. 8" is for big dog and 5" is for small dog.  
2)Remove the protection cover on the contact point.  
3) Use the contact point to install the contact points. Turn CW(Clockwise) to install. ( Turn CCW / Counter-clockwise to loose the contact point.)



- 2. Test the shock before use**  
1)Put the contact point tool on the contact points. Make sure the contact point are well fit into the testing holes.  
2) Activate the shock. The testing light will be on if the shock work. Note: Shock level is below level 5, it will not hurt by your hands.



### TROUBLESHOOTING

Problems	Possible causes	Solutions
Not able to turn the collar receiver on.	No power	Recharge the collar receiver before use.
Not able to turn the remote on.	No power	Recharge the remote before use.
Collar receiver get no shock /beep / vibration	No power	Ensure the collar receiver is fully charged and turn on.
The collar receiver is not respond to the remote	Receiver no power.	Re-pair the collar receiver. Ensure it's connecting to the remote.
	The remote select wrong receiver	Switch and try all the channels on the remote to find the correct one.
	The collar is not paired to the remote.	Re-pair the collar receiver. Ensure it's connected to the remote.

### WARRANTY INFORMATION

If you have any product question, or you have any product issues, please contact our e-mail:

Your name: \_\_\_\_\_ Order number: \_\_\_\_\_  
E-mail: \_\_\_\_\_ Phone: \_\_\_\_\_

**BETTER FOR YOUR DOGS**  
Greetings!Thanks for your support! Here are 3 tips for you!

**Tip 1:Shocked Dog Doesn't Respond**  
Please ensure the metal contact point is touching your dog's skin. If shock level is too low,the shock feels weak. Increase the shock level step by step to see your dog's reaction.

**Tip 2: How to adjust the level without activate training fuctions?**

- 1) Press button to switch to the training fuction you prefer to adjust.
- 2) Use +/- button to adjust the levels.

**Tip 3: The receiver no respond.**  
1) Check if the receiver is paired and turn on.  
2) Check if the remote connect to the right channel and match the right receiver.

This device complies with Part 15 of the FCC Rules. Operation is subject to the following two conditions: (1) this device may not cause harmful interference, and (2) this device must accept any interference received, including interference that may cause undesired operation

NOTE: This equipment has been tested and found to comply with the limits for a Class B digital device, pursuant to Part 15 of the FCC Rules. These limits are designed to provide reasonable protection against harmful interference in a residential installation. This equipment generates, uses and can radiate radio frequency energy and, if not installed and used in accordance with the instructions, may cause harmful interference to radio communications. However, there is no guarantee that interference will not occur in a particular installation.

If this equipment does cause harmful interference to radio or television reception, which can be determined by turning the equipment off and on, the user is encouraged to try to correct the interference by one or more of the following measures:

- Reorient or relocate the receiving antenna.
- Increase the separation between the equipment and receiver.
- Connect the equipment into an outlet on a circuit different from that to which the receiver is connected.
- Consult the dealer or an experienced radio/TV technician for help.

Warning: changes or modifications not expressly approved by the party responsible for compliance could void the user's authority to operate the equipment

The devices has been evaluated to meet general RF exposure requirement , the device can be used in portable exposure condition without restriction