

# Gosvor®

## ***User Manual***



***Gosvor Pivot***

***Cordless Pool Vacuum***

Thank you for choosing the Gosvor Pivot Cordless Pool Vacuum.  
Please take a few moments to read through this user manual.

If you have any questions, please contact our customerservice team.

### **Gosvor Customer Service:**

 US Toll Free:(866) 866-8806

 Email: [Service@gosvor.com](mailto:Service@gosvor.com)

# CONTENTS

Important Precautions	3
1. Introduction	5
2. Specifications	7
3. Operations	8
3.1. Getting Started	8
3.2. Cleaning the Filter Bag	10
3.3. Cleaning the Rotor	12
4. Troubleshooting	13
5. Warranty	14

## Important Precautions

When installing and using this electrical equipment, basic safety precautions should always be followed, including the following:

1. Read the manual carefully and use the product according to the instructions. Gosvor will not be held responsible for any loss or injury caused by improper use or care of this device.
2. Only use authorized accessories recommended or sold by the manufacturer or approved affiliates
3. Ensure that children do not attempt to access cleaner while it is operating
4. Only use 36112 adapters for the device.
5. If needed, the adapter cord should only be replaced by a qualified electrician.
6. Do not turn on the device when it is out of the pool.
7. The charging adapter must be connected to a surge protector when charging.
8. Do not operate the cleaner when people or animals are in the pool.
9. Always clean and wash the filter tray after using the device.
10. Turn off the cleaner when performing maintenance on or cleaning the device.
11. The cleaner should be stored in a cool and well-ventilated place, away from direct sunlight.
12. While charging, the cleaner should be kept in a cool place and not directly covered by cloth or other objects, as this may overheat components in the device.
13. Only certified professionals are permitted to disassemble the sealed driving kit of the cleaner.
14. Do not operate the device while the pool filter is running.
15. The motor's oil sealing contains grease, which may cause a small discharge of grease if the component is damaged.
16. The device is only suitable for swimming pools up to 1292 sq. ft (120 m<sup>2</sup>). Using the device on larger pools may reduce the cleaning effectiveness.
17. If the cleaner needs to be stored for an extended period of time, it should be charged every three months to maintain battery life between 40%-60%. If the cleaner is not charged for an extended period, the battery voltage may lower to levels that could be dangerous when recharging.
18. Do not use or store the cleaner near any heat source
19. Do not pierce, bludgeon, or throw the device, as this may cause irreparable damage.
20. Make sure the charging socket is dried before charging

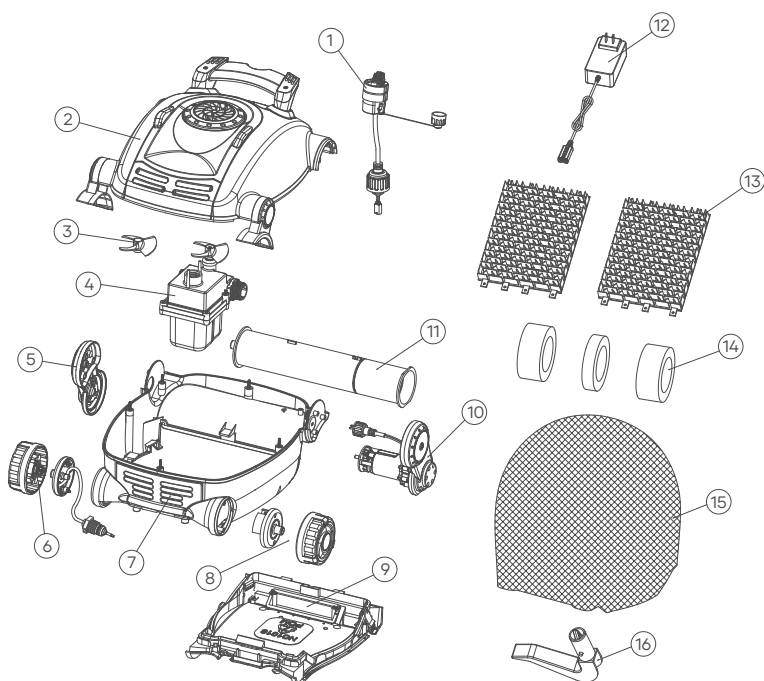
21. Do not bury the charging cable.
22. Ensure the device is turned off before attempting to charge the device.
23. If this device is damaged, liquid may leak from the battery and should not be touched.
24. If the device is damaged, cease operations immediately.
25. Do not modify or attempt to replace the battery pack.

**SAVE THESE INSTRUCTIONS.**

## 1. Introduction

The Gosvor Pivot is an energy-saving, environmentally friendly Cordless Pool Vacuum. Highly efficient, this device can clean pool walls and floors automatically without replacing the pool water.

**Read this user manual carefully before use.**



Item	Part Number	Parts Description
1	64001	Charging Port
2	64012	Top Shell
3	NC1015	2.5" Rotor
4	85020	Pump Motor Block with Built-in Battery
5	64030	Right Roller Support Bracket, No Drive
6	64060	Right Front Wheel, with Sensor
7	64051	Bottom Shell – Black
8	64040	Left Front Wheel, No Sensor
9	NC1026	Bottom Lid
10	64191	Left Roller Support Bracket, with Drive Motor
11	64100	Drive Roller Tube
12	36112	1A Plug-in wall charger
13	64080	Rubber Brush Pad 2 Pcs Set, Black
14	64120	Foam Collar 3 Pcs Set
15	NC1017	Filter Bag
16	64110	Retrieval Hook

## 2. Specifications

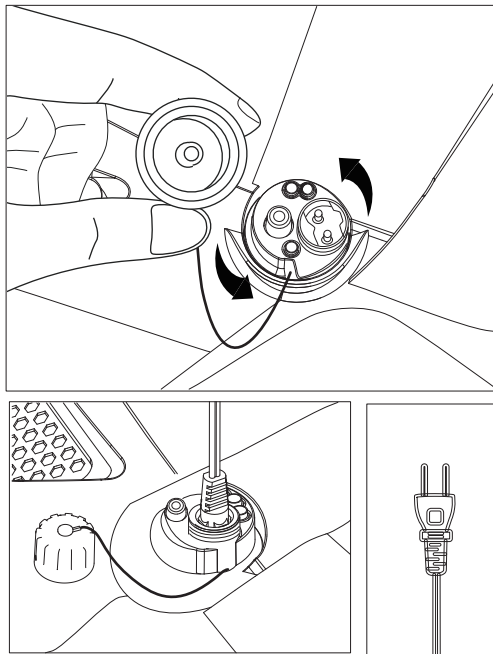
1. Model	Gosvor Pivot
2. Rated Working Voltage	25.9V
3. Power	90W
4. Battery Life	100 Minutes
5. Charger Input	100~240V, 50/60Hz
6. Charger Output	25V/1A
7. Battery Capacity	2600mAh x 6
8. Charging Time	3 Hours
9. Pool Size	100m <sup>2</sup> /1076sq.ft
10. Filter Capacity	71GPM(267LPM)
11. Filter Density	180μm
12. Moving Speed	32.8ft/min (10m/min)
13. Waterproof Grade	IPX8
14. Pool Water Temperature	50°F~77°F (10°C~25°C)
15. Pool Water PH Value	7.0~7.4
16. Charging Environment Temperature	41°F~95°F (5°C~35°C)
17. Max Water Depth	3m (10feet)
18. Product Size	430(L)x390(W)x220(H) mm
19. Storage Temperature	-4°F~113°F (-20°C~45°C), RH ≤ 75%



## 3. Operations

### 3.1 Getting Started

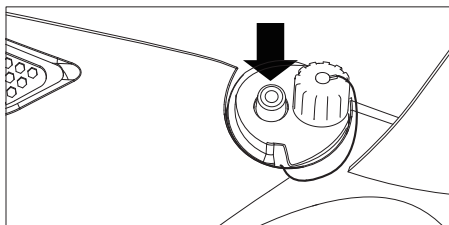
1. Find a working electrical outlet.
2. Wipe the charging port with a towel to prevent water from entering the charging port.
3. Twist off the plastic cap to plug in the charging cord.
4. The charger indicator light will turn red, indicating the device is charging. Allow 3 hours to fully charge your device, at which time the indicator will turn green. Charging takes 3 hours to charge the device fully. The indicator light will turn green when charging is complete.



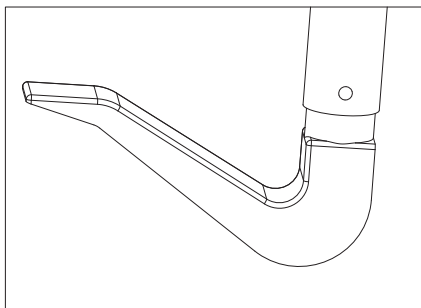
5. Unplug the charger and screw the plastic cap onto the device ensuring a firm fit. Now you're ready!

**WARNING:** Do not operate the device out of the water as it may damage some components.

**Press to start cleaning**

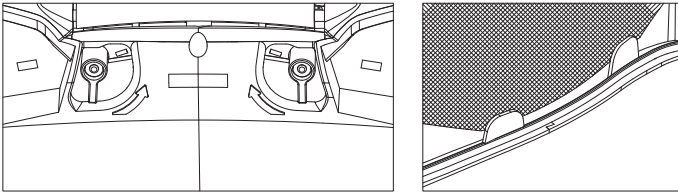


6. At your pool, press the button, and the blue LED indicator will blink for ten seconds. Place your device into the water, and rock it side-to-side to help any air trapped in the body to escape, then fully submerge the device.
7. If you need to stop the cleaning process for any reason, you can manually shut the device down by pressing the button for three seconds.
8. After your device has completed its cleaning cycle, it will automatically park near your pool's wall. Use the provided hook to retrieve the device.



## 3.2 Cleaning the Filter Bag

1. Place the device on the ground, top side down.



2. Press the two red tabs at the front of the device inwards and towards the front.
3. Press in the two red clips at the rear and lift up the lid.
4. Pull the red ribbon near the front marked "PULL TO REMOVE BAG."
5. Empty any debris inside the bag.
6. Flip the bag inside out and use a hose to spray the bag to remove any lingering debris. In some instances, washing the bag by hand may be necessary.
7. Hose clean the lid and body of the device.
8. Return the bag to its original position and return the cleaned filter back into the lid.
9. Starting with the sides, attach the lid back to the device's body and secure the tabs in reverse order. Ensure the body is properly latched and snugly fits with the base of the device.

