

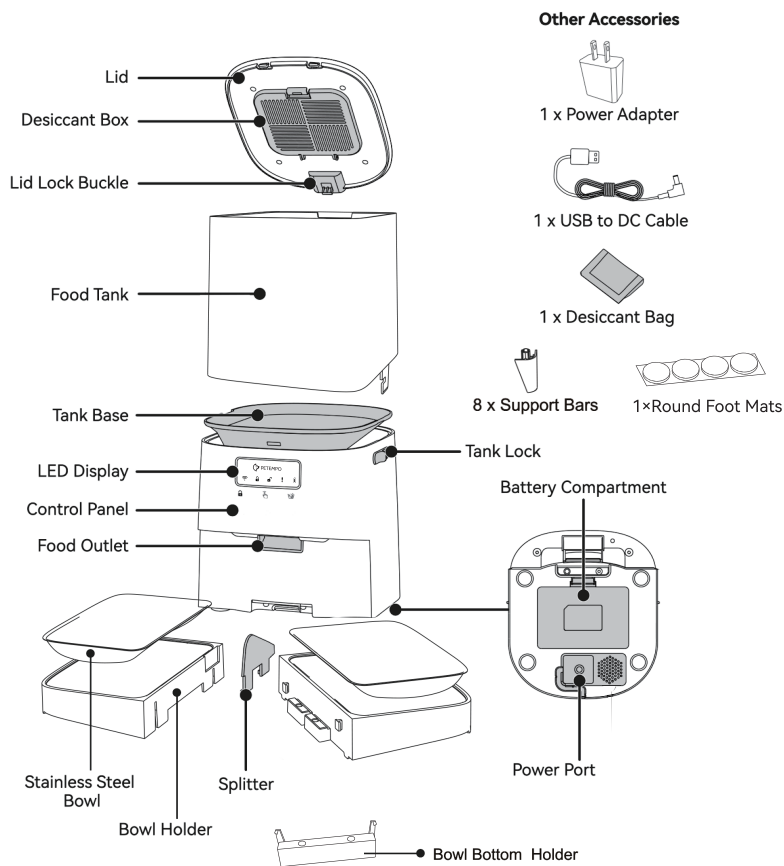
PAF-02

Automatic Pet Feeder User Manual

CONTENTS

1. Exploring Your Pet Feeder	01
1.1 Specifications	01
1.2 Assembling Your Pet Feeder	02
1.3 LED Display	04
1.4 Control Panel	04
2. Using Your Pet Feeder	04
2.1 Add Pet Food & Power on	04
2.2 Before Configuration	05
2.3 Download App & Sign Up	06
2.4 Connect App	06
2.5 Feeder Sharing	08
2.6 App Sharing	09
3. Care and Cleaning	10
3.1 Cleaning Bowls & Holders	10
3.2 Cleaning Lid, Tank & Tank Base	10
4. Important Safety Instructions	13
4.1 Intended Use	13
4.2 Electricity Safety	13
4.3 Related To Use	13
5. Troubleshooting	14
6. NOTE	16

1. Exploring Your Pet Feeder

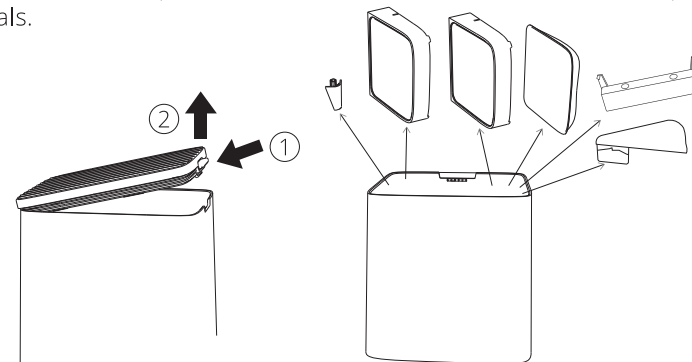


1.1 Specifications

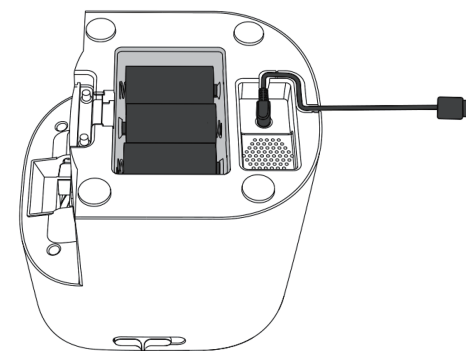
Capacity	5L/1.32 Gal
Applicable Kibble	0.118-0.709 inch / 3-18 mm dry food
Power Supply	DC 5V Power Adapter 3 x Alkaline D Battery for backup (Battery is not included in this device accessories)

1.2 Assembling Your Pet Feeder

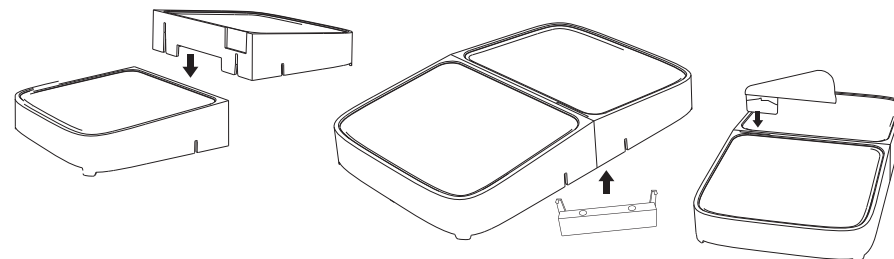
① Press lock buckle to open lid. Take out all accessories and remove all packing materials.



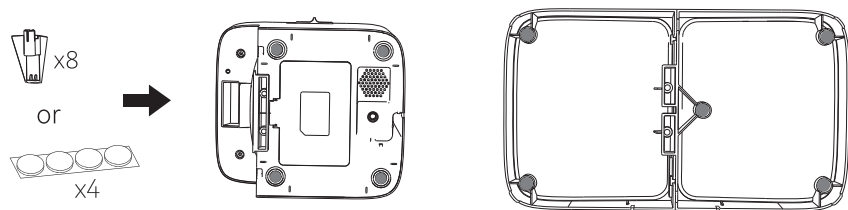
② Plug in DC cable. Install 3 x D batteries for back-up power in case of power outage.



③ Align the notches and then snap splitter into the middle of the bowl holder.

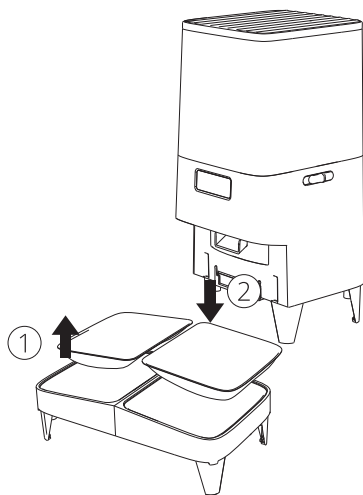


- ④ The support bars can be installed through the holes at the bottom of the base so as to raise the height.

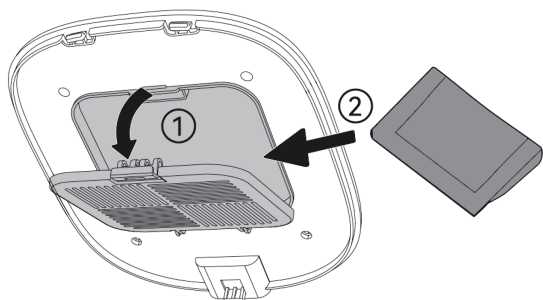


Tip: The bottom hole position can be added to support bars, or paste round foot mat.

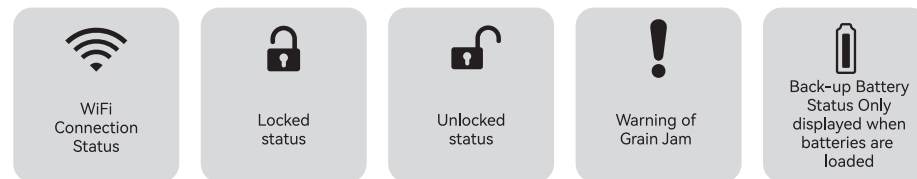
- ⑤ Place bowls in bowl holders. Lift feeder and attach the bowls to the notch underneath the base.



- ⑥ Take desiccant bag out from packaging and open desiccant box and place it in. Put the lid back on. The desiccant bag is recommended to be changed once a month.



1.3 LED Display



1.4 Control Panel



Lock / Unlock

Hold for 3s to lock or unlock the control panel.



Manual Feeding

Unlocked Status:
Double Tap to dispense one portion of food.



Unlock the Food Slider

Unlocked Status:
Hold for 3s to unlock the food slider.

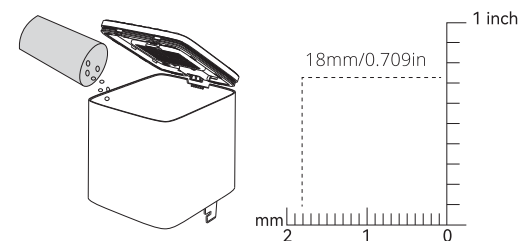
2. Using Your Pet Feeder



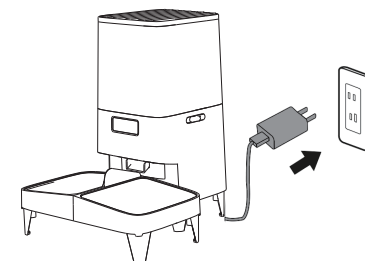
Make sure that per feeder is properly installed before filling the food tank.

2.1 Add Pet Food & Power on

- ① Fill food tank with dry pet food (0.118-0.709 inch).
Cap the lid back and press to snap in place.



- ② Plug in the equipped power adapter.
The LED display will light up, indicating the feeder is on.




2.2 Before Configuration

- 1 Please use indoors only to avoid direct exposure to sunlight. Place the feeder as close to the router as possible; we recommend that the distance between them is no more than 10 meters, and try to minimize any obstacles like walls in between.
- 2 Wi-Fi Configuration: Connect your phone to Wi-Fi and check the Wi-Fi frequency. This feeder only supports the 2.4GHz Wi-Fi frequency. If your Wi-Fi frequency is only 5GHz, please use the router's control interface to set it to be compatible with the 2.4GHz frequency.

The reference page for router side settings is as follows:

Wi-Fi Settings


Wi-Fi multi-frequency integration ☐ On ☒ Off



2.4G and 5G wireless networks use the same wireless name and password. When the terminal connects to Wi-Fi, the router will automatically select the best Internet band for the terminal according to the network conditions.

Save

Network Status


 2.4G Wi-Fi ☒ ON

Connected devices: 0

Name

Password

Save

 5G Wi-Fi ☒ ON

Connected devices: 0

Name

Password

Save

Please assign distinct names and passwords for the 2.4GHz and 5GHz Wi-Fi networks in order to differentiate between the two frequency bands, facilitating subsequent selection of the 2.4GHz network for device connectivity.



Please consult your home router's web page for specific instructions, as different router models may vary.

2.3 Download App & Sign Up

- 1 Download the Tuya/ Smart Life app from the iOS or Android app store. Sign up or log into your account.




2.4 Connect App

- 1 Power on the feeder. Long-press "Lock/Unlock"  button for 3-5s to unlock, and then long-press "Manual Feeding"  for 3-5s until the Wi-Fi icon blinks. Wait for connecting.
- 2 Please connect your phone to 2.4GHz Wi-Fi. Open the Tuya or Smart Life app and enable both Bluetooth and location services. Click 'Add Device,' the system will automatically search for nearby devices. Add the 'PAF-02' device, input the Wi-Fi name and password for the device's connection on the pop-up page, then click 'Next,' and wait for the device to be added.

Add Device

Done

1 device(s) being added






PAF-02
Tap to add this device

+

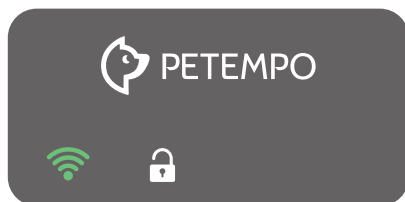
Cancel

Choose Wi-Fi and enter password

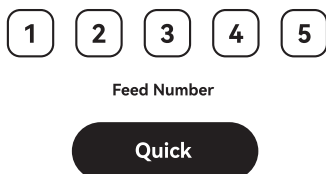
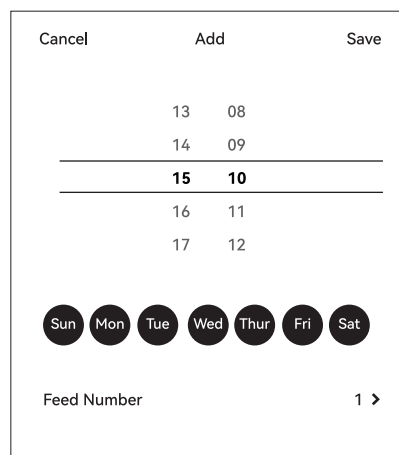
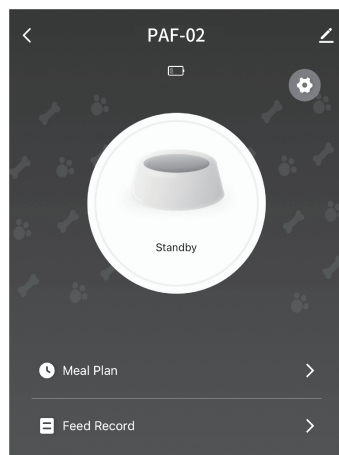
 Wi-Fi Name 

 Password

- The feeder Wi-Fi icon remains lit, and the phone shows 'added successfully,' confirming a successful device connection. (Note: If the device fails to be added, please check whether Wi-Fi is compatible with the 2.4GHz network. If Wi-Fi only supports 5GHz, please set it to be compatible with the 2.4GHz network before connecting.)



- After the device is successfully connected, you can start to formulate a feeding plan:
 - Meal Plan: You can add up to 10 feeding schedules and set up to 60 portions at a time.
 - Feed Record: Click to view the feeding history. When the device has no external network, there is no feeding history, but the device will still feed normally.
 - You can also feed manually by the APP.

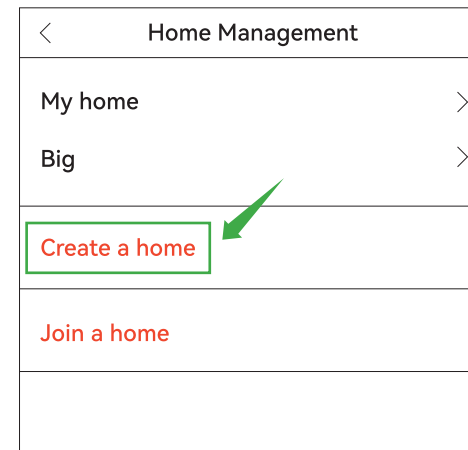


2.5 Feeder Sharing

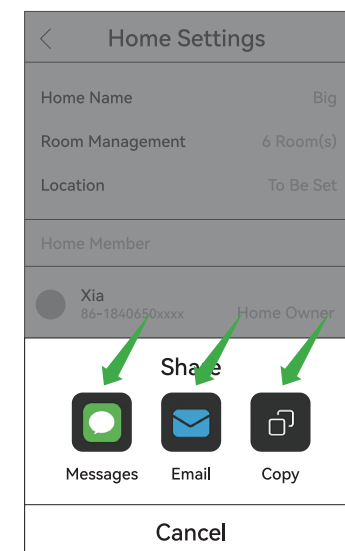
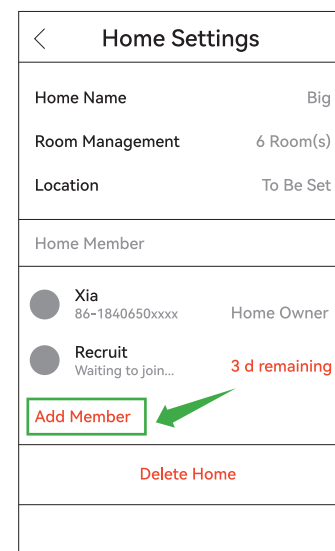
Multiple users, control one feeder

Create and invite to join the home:

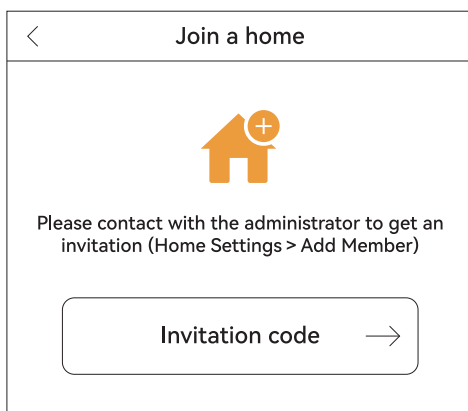
- Open the app, go to the "My" page, and select "Home Management." You will be directed to the "Home Management" page; then, click on "Create a home." After creating a home, add the feeder to the home.



- Enter the "Home Settings" page, and click on "Add Member." (Note: All family members should use the same app to jointly control the device.) You will be directed to the "Share" page; choose a method to share the invitation code.



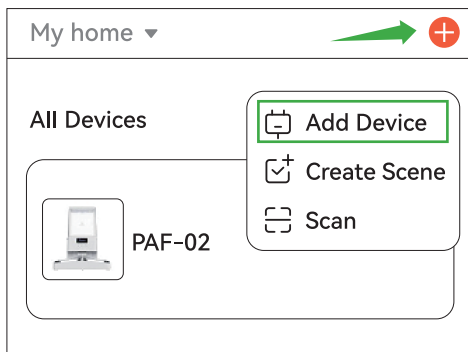
- The invitee receives the invitation code and copies it. The invitee opens the app, goes to the "My" page, selects "Home Management," and clicks "Join a home." Enter the invitation code. After successful joining, multiple users can control the same feeder. (Note: To control the feeder, users must join the family created by the initial feeder owner. Up to 20 users can control the same feeder simultaneously.)



2.6 App Sharing

Multiple feeders, controlled by one app

- Open the Tuya or Smart Life app.
- Click on 'Add Device' and locate the 'PAF-02' device you wish to add. Tap to add it and enter the corresponding Wi-Fi password. After a successful connection, click 'Finish Adding,' which allows you to control the feeder through the app.
- Repeat step②; one phone can connect to and control multiple feeders. (Recommended: One phone can control up to 20 feeders.)



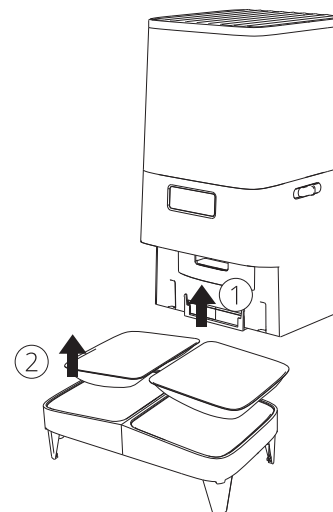
3. Care and Cleaning



- Always dry all parts thoroughly before reassembling for next use.
- It is recommended to clean the feeder regularly for the health of your pets.

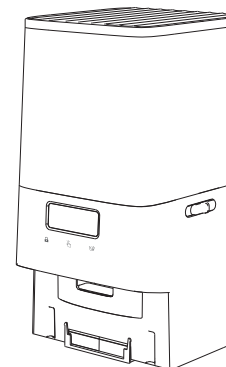
3.1 Cleaning Bowls & Holders

- Lift the feeder and remove the bowl holder. Rinse the bowls off and dry them.

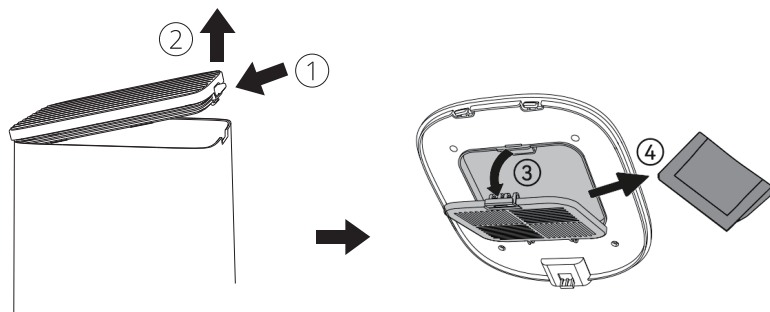


3.2 Cleaning Lid, Tank & Tank Base

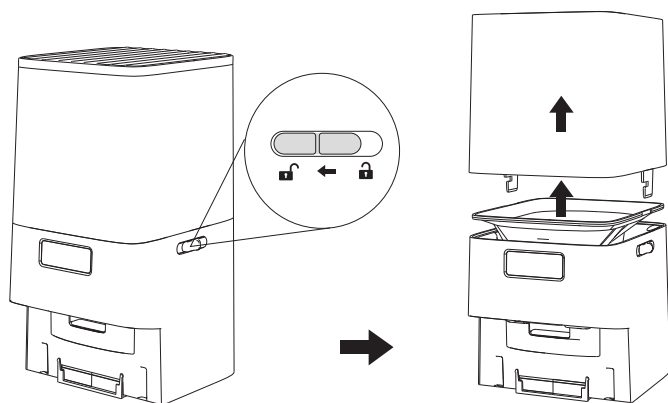
- In the unlocked status, hold the power button for 3s until a beep is heard to unlock the food slider. Before cleaning the feeder, please remove the battery and turn off the power.



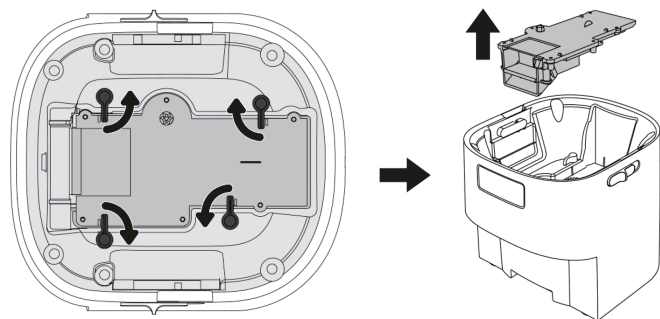
- ③ Press the lock buckle to open the lid. Take out the desiccant bag.



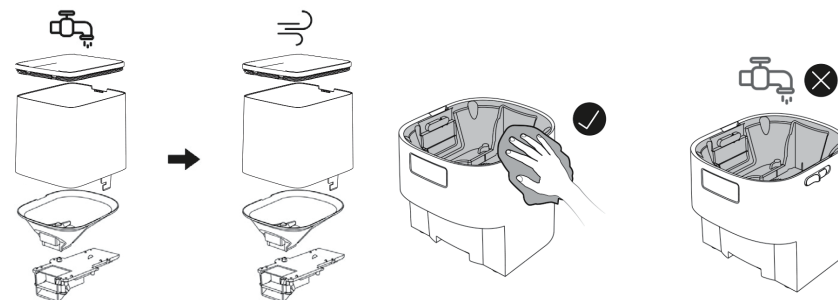
- ④ Slide the lock latches on both sides to remove the tank and tank base.



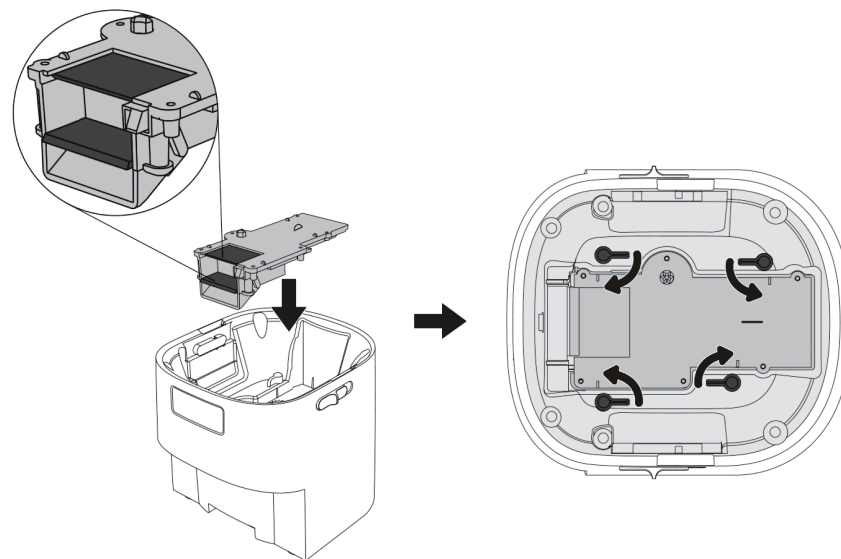
- ⑤ Rotate the four lock latches to unlocked position, then take out the food slider.



- ⑥ ● Rinse the lid, tank, tank base and food slider, then dry them thoroughly.
● Wipe the base with a soft and damp cloth. Do not rinse or immerse the tank base in water.



- ⑦ Hold the food slider and place it back to the base. Rotate the lock latches to lock the slider in place.



- ⑧ Refer to the forth step and reinstall the feeder in the same way.

4. Important Safety Instructions

4.1 Intended Use

- Children should be supervised to ensure that they do not play with, in or around the appliance.
- Intended for use with dogs or cats only. Do not use this pet feeder with puppies, kittens, dogs or cats not able to reach the food tray or with any physical disability.
- Use the appliance only for intended household purposes as described in this User Manual.

4.2 Electricity Safety

- DO NOT operate the appliance if it has a damaged power cord or plug, or if it is malfunctioning or has been damaged in any manner
- DO NOT immerse power cord, plugs, or the device base in water or other liquid or allow moisture to come into contact with these parts.
- In order to reduce the risk of electrical shock, do not place or store an appliance where it can fall or be pulled into a tub or sink.
- Always unplug the appliance when not in use, before putting on or taking off parts and before cleaning. Never unplug by pulling on power cord.
- Use ONLY the provided power adapter and charging cable.

4.3 Related To Use

- DO NOT attempt to disassemble, repair, modify or replace any part of your product. All servicing should be performed by qualified personnel only. No user serviceable parts inside.
- DO NOT allow pets to chew on or swallow any parts. Cover or hide the power cord with care to prevent pets from biting.
- DO NOT lift the pet feeder by lid, hopper, bowl or bowl holder. Lift and carry feeder using both hands and hopper base, while keeping unit in upright position.
- Install or store pet feeder on a level surface against wall or in a corner to avoid tripping.
- For dry food use only. Do not use wet, canned, moist food or pet food with special shapes, holes or diameter above 18mm/0.709 inch.
- Install 3 alkaline D batteries (not included) for back-up power in case of a power outage.
- Before leaving for extended time, always replace batteries with new batteries. Check operation frequently to be sure the pet feeder is dispensing properly.
- Dispose of all packaging materials properly. Keep away from children and pets.

5. Troubleshooting

Networking is not successful

1. Please confirm whether it is visitor mode, please register APP account to use it for the first time.
2. Please make sure the network password is entered correctly.
3. Please make sure the WiFi signal is good, and it is recommended that the distance should not exceed 10 meters to avoid poor network signal.
4. Please make sure to use 2.4GHz WiFi network, this product does not support 5GHz WiFi network at this time.


(1) How to confirm if your Wi-Fi is 2.4GHz or 5GHz:

First, click on 'Settings' and then select 'WLAN' on your phone. Choose the Wi-Fi network that is already connected from the Wi-Fi list. Inside the Wi-Fi details page, you can check the frequency information, which will indicate whether the Wi-Fi connection is on the 2.4GHz or 5GHz band.

(2) To change to 2.4GHz following these steps:

Locate your home router. Note down the management IP address and device password found on the router's back. Open your mobile browser and enter the router's IP address. Access router settings by providing the password. If you forget the password, use the "Forgot Password" option to initiate device initialization and log in to the router. Within the router management interface, navigate to Wi-Fi settings to find the 2.4GHz frequency band. Click "Save," and the router will reboot.

Searching for devices not available

Reset the device. Unlock it and press the Manual Feeding  button for about 5 seconds, and the WiFi indicator will go out. Release the button, the WiFi indicator will flash, indicating the reset was successful.


No grain, stuck grain

1. Please check if the remaining food is sufficient.
2. Please make sure that the grain outlet is not too full, in this case, you can reduce the number of servings of grain.
3. After the grain jam, please clean up the grain bucket to ensure that the phenomenon of grain jamming is lifted before normal use.

Does not work when connected to the power supply

1. Please check if the power plug is properly connected
2. The power indicator will light up automatically when the plug is properly connected.

Feeder shows "offline"

1. Please check whether your own cell phone network is connected properly
2. Please check that the distance between the feeder and router is no more than 10 meters and probably no concrete walls between them.
3. If the feeder is disconnected, please don't worry, the machine will reconnect after a while. Even if the network is disconnected, the chip has a memory storage function, so the feeding plan will go on as usual.
4. If only using backup batteries, the feeder may shut off its network function after a few minutes of inactivity, displaying an offline status. You can manually wake up it by pressing the Manual Feeding  button. Then, refer to step 2.4 (Page 06) to start reconnecting Wi-Fi.

6. NOTE

This equipment has been tested and found to comply with the limits for a Class B digital device, pursuant to part 15 of the FCC Rules. These limits are designed to provide reasonable protection against harmful interference in a residential installation.

This equipment generates uses and can radiate radio frequency energy and, if not installed and used in accordance with the instructions, may cause harmful interference to radio communications. However, there is no guarantee that interference will not occur in a particular installation. If this equipment does cause harmful interference to radio or television reception, which can be determined by turning the equipment off and on, the user is encouraged to try to correct the interference by one or more of the following measures:

- Reorient or relocate the receiving antenna.
- Increase the separation between the equipment and receiver.
- Connect the equipment into an outlet on a circuit different from that to which the receiver is connected.
- Consult the dealer or an experienced radio/TV technician for help changes or modifications not expressly approved by the party responsible for compliance could void the user's authority to operate the equipment.

This device complies with Part 15 of the FCC Rules. Operation is subject to the following two conditions:

- (1) this device may not cause harmful interference, and
- (2) this device must accept any interference received, including interference that may cause undesired operation.