

ROBE®



iESPRITE® LTL

Building on our award-winning iFORTE® LTX WB, we're thrilled to introduce the smaller, lighter iESPRITE® LTL WB WashBeam and FS luminaires, crafted to meet customer demand.

Retaining the acclaimed design and durability of the iSERIES, the iESPRITE® LTL WB will deliver powerful medium to Long-Throw performance without straining your truss or wasting space, indoors or out, even in the harshest weather.

The iFORTE® LTX set new standards for intensity, optical excellence, and precision. The IP65-rated iESPRITE® LTL WB maintains these qualities to join our next generation of unmatched Robe multi-use WashBeam luminaires, offering a clear edge for concert touring, broadcast, and theatrical productions.

Designed, developed and manufactured within our own factory, patented iSET™ TRANSFERABLE ENGINE IP65-rated technology offers swappable, task specific LED solutions - XP for maximum brightness or HCF for superior colour fidelity. These data capturing, self-referencing engines permit cost-effective engine updates, maintain light quality and future-proof your investment.

Generating 260.000 lux at 5 meters, the iESPRITE® LTL WB pairs exceptional output from the 750W LED engine with advanced thermal management, ensuring output stability and luminaire longevity.

As with the iFORTE® LTX WB, our innovative optical design offers remarkable versatility. The standard Optical Range Mode delivers a zoom range of 3° - 57°, while narrowing the iris allows coverage from 2° - 52°. The Long-Throw Mode, using patented xR7™ technology, provides an ultra-tight beam from 0.7 - 2° incredibly without any intensity loss usually found when engaging an iris over long distances, making it the perfect partner for our industry-standard RoboSpot™ remotely controlled follow spot system.

The iESPRITE® LTL WB features camFIT™, meaning the fixtures is prewired and pre-balanced to enable quick, seamless integration of the IP65-rated RoboSpot™ camera. Or you can select the iESPRITE® LTL FS for a ready-to-use fixture with a pre-installed, parCoat™-protected digital camera, to ensure clear visuals in any weather. An additional Epass™ ethernet port allows for camera output while maintaining network connectivity.

Packed with features, including CMY colour mixing, ChromaTint™ green control, Plano4 FC™ FC full-curtain framing rotatable shutter module, dual gobo wheels, dual 6-facet prisms, and interchangeable frosts, the iESPRITE® LTL WB has a full toolkit providing unlimited creative potential.

With MAPS™ (Motionless Absolute Positioning System), pan and tilt calibration occurs without movement, ensuring distraction-free resets during performances and allows calibration within tight spaces.

Our RAINSTM active climate management system protects internal components by preventing moisture buildup, provides easy maintenance and self-pressure testing without specialized tools. When activated, POLAR+™ technology gives instant operability in temperatures as low as -50°C.

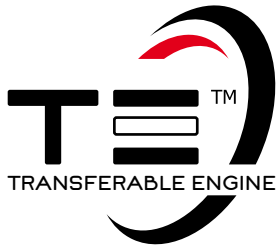
The iESPRITE® LTL WB combines unmatched class leading performance, features, versatility, and durability in a compact package, engineered for both indoor and outdoor excellence.

Josef Valchar
CEO

ROBE®

iESPRITE[®]
LTL WB





Robe's iSE-TE™ – TRANSFERABLE ENGINE guides performance lighting into the great outdoors.

Our reputation for innovative design, hard-earned over more than 30 years, results from asking questions, listening to customers, and repeatedly redefining the boundaries of technology.

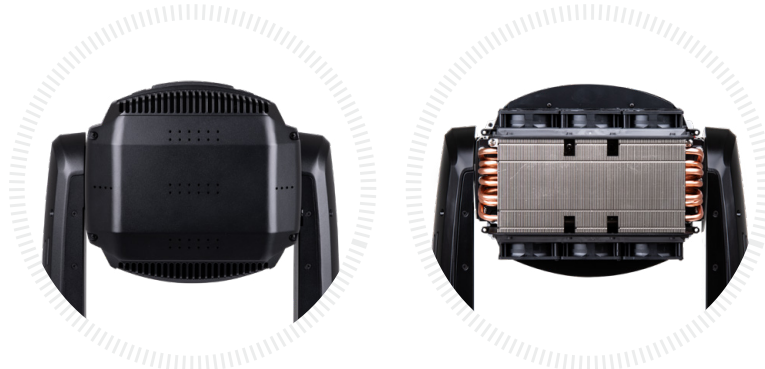
We have the most forward-thinking engineers and designers in our industry. **TRANSFERABLE ENGINES** addressed the problem that white source LED engines do not last forever and vary in colour consistency over time. We then met the clamour to extend these to task-specific engines, such as the HCF (High Colour Fidelity) variant. Finally, we wanted to extend these engines and all their inherent advantages to our outdoor luminaires.

Exploiting the advantages of **TRANSFERABLE ENGINES** without introducing complicated procedures to handle the challenges of humidity and moisture, an intensive developmental process resulted in the IP65-rated iSE-TE™ White LED engines for our iSERIES range of outdoor profiles- the iFORTE®, iESPRITE® and iPAINTE®. With identical DMX maps and performance, similar weights and form factors, these **TRANSFERABLE ENGINE** equipped IP65 protected fixtures can be seamlessly interchanged with their indoor equivalents and be used together, even on the same truss, without consequence.

The IP65-rated **iSE-TE™** engines still enable easy, rapid engine exchange, data harvesting and source selection without compromising their protection, allowing engine changes in the field. To ensure the very best performance and consistency, they are again designed, developed, patented and manufactured within our factory in the Czech Republic.

Every Robe **iSE-TE™ TRANSFERABLE ENGINE** has its own, unique, memory. All engine data stays with the engine, meaning when you transfer it to a new fixture, the data travels with it.

All data stored on the **iSE TRANSFERABLE ENGINE** is easily accessible through Near Field Communication (NFC) technology via the ROBE COM app. This provides direct access to the engine information. This includes engine type and serial number; full module installation history; intensity compared to initial performance; hours worked, and much more.





All data is available without powering the engine while sitting on your shelf, giving you the same instant accessibility. Furthermore, when the module is installed in a fixture, the data is available directly from the fixture display.

Our **iSE TRANSFERABLE ENGINES** are fast-changing, taking under 5 minutes. They require no special tools, complex procedures or return to workshop or agent. With no alignment or calibration needed you have a rapid “lamp-like” exchange.

Robe **iSE TRANSFERABLE ENGINES** are very economical, costing approximately twice the price of high-performance discharge lamps.

Combined with the advantages of LED, you now have the tools available to maintain a high level of light consistency across your inventory.

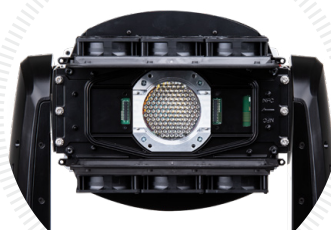
Transferable means a new engine at a lower cost, compared to a replacement engine at a far higher price. With no warranty or reduced LED lifetime issues, they carry a four-year 20.000-hour warranty.

Another benefit of the self-referencing engines is their ability, via our unique software, to give you a visual performance reference. Being able to quickly set the outputs to a consistent level, even while the fixtures are up in the rig, will save you a lot of time in the pressurised world of touring.

Robe fixtures utilising the **iSE TRANSFERABLE ENGINES** technology have been deliberately designed with built in capacity to take advantage of possible future LED engine development. This forethought, combined with their ease of transfer, will give you an even greater luminaire longevity.

In line with our stringent Green Policy, when the engines have reached the end of their life, we have the Robe **iSE TRANSFERABLE ENGINES** free return for recycling offer, making them very Eco-friendly.

The **iSE TRANSFERABLE ENGINES** concept pioneers a new era in IP-rated luminaires using white source LED engines. It gives you the ability to cost-effectively maintain a high level of quality light consistency across your inventory while ensuring the highest level of return on your investment.





Inspired by the award-winning iFORTE® LTX and maintaining the renowned design and durability of the iSERIES, the smaller and lighter iESPRITE® LTL WB WashBeam and FS luminaires deliver a powerful advantage in their class for live concert-touring, theatrical productions, and broadcast designs, indoors or out.

With exceptional form-factor, impressive output, optical precision with an imposing 200mm front lens and rich feature set, this fixture will fit deliver high performance without occupying excessive space or overloading your truss, at just 37.5 kg.

Both are available with a choice of patented, IP65-rated iSE-TE™ 750W White LED TRANSFERABLE ENGINES. Choose between the XP (High Performance) engine, which delivers a 6.700 K colour temperature, a fixture output of 35.000 lm (integrating sphere), for an impressive 250.000 lx at 5 m with a CRI of 70 for maximum brightness; or the HCF (High Colour Fidelity) engine, offering a 6.000 K colour temperature, 22.750 lm output (integrating sphere), for illuminance of 140.000 lx at 5 m with an exceptional CRI of 96 for superior colour rendition.

Engineered for durability, the TRANSFERABLE ENGINE delivers stable output, field exchangeability and possible future LED upgrade capability. Its advanced, stable thermal management system means we can offer a 50.000-hour L70/B50 rating and a 4-year, 20.000-hour warranty. They are designed to endure.

The innovative optical design offers remarkable versatility. The standard Optical Range Mode delivers a zoom range of 3° - 57°, while narrowing the iris allows coverage from 2° - 52°. The Long-Throw Mode, using patented xR7™ technology, provides an ultra-tight beam from 0.7° - 2° incredibly without any intensity loss usually found when engaging an iris over long distances.

With CMY colour mixing system, combined with dual colour wheels and a variable CTO range of 3.000 to 6.700K, seamless transitions from bold saturates to delicate pastels are guaranteed. ChromaTint™ patented green content control technology allows rapid adjustment for broadcast environments.

They are packed with effects, including rotating and static gobo wheels, an aluminium animation wheel with variable speed and directional control, and two stackable prisms—a six-facet circular and a six-facet linear. Two MagFrost™ interchangeable frosts, at 1° and 5°, enhance its versatility. Precision framing is achieved with the Plano4 FC™ system, which offers four-plane blade control, full curtain capability, and module rotation up to 120 degrees.

Advanced features like our L3™ Low Light Linearity 18-bit dimming system, Cpulse™ flicker-free management for compatibility with modern camera systems, and Epass™ network connectivity safeguards ensure smooth, reliable operation in any scenario.

The standard iESPRITE® LTX WB features CamFIT™, meaning it is pre-wired and pre-balanced for the addition of the dedicated IP65-rated RoboSpot™ camera if required.

The FS FollowSpot version comes equipped with a full HD digital camera mounted on the head. parCoat™ lens protection to ensure a clear picture in inclement weather. The IP65-rated camera features 32x optical and 32x digital zooms and is suitable for light levels down to 0.05 lux. Together with EMS™ (Electronic Motion Stabiliser) technology for instant stop and hysteresis elimination, it's the perfect medium to Long-Throw RoboSpot™ partner.

Removing the need for pre-use pan and tilt calibration, MAPS™ (motionless Absolute Positioning System) allows fixtures to be calibrated without movement. This also removes audience distraction while resetting during a performance.

Robe's patented RAINS™ protection system actively manages the fixtures internal microclimate to prevent moisture buildup, ensuring reliability in outdoor use. The self-pressure test function verifies seals and locking screws in under three minutes, requiring no special tools for easy maintenance.

To maintain consistent optical performance, the unique parCoat™ lens coating repels water, dirt, dust, haze, and smoke from the front lens while allowing easy cleaning without damage. For extreme cold conditions, patented standby POLAR+ technology keeps sensors and communication channels active and ensures instant operability in temperatures as low as -50 degrees Celsius.

Remote control and monitoring are enabled through REAP™, (Robe Ethernet Access Portal), which provides real-time fixture data and diagnostics. NFC technology allows setup and adjustments directly from your mobile device using the Robe Com app, even when the fixture is unpowered.

For easier handling of larger fixtures, optional clip on/off handles are available.

The iESPRITE® LTX WB and FS combine unmatched power, precision, and durability in a single package, delivering exceptional WashBeam and long-throw follow-spot performance for indoor and outdoor use.

iESPRITE® LTL WB and FS - Robe reliability in all weathers.



Source

- Light source type: **TE™ 750W XP White LED Engine** (Patented)
 - XP - Xtra Performance Engine for maximum light output and optimal colour characteristics
 - LED Engine output: 57.000 lm
 - Fixture total lumen output: 35.000 lm (integrating sphere) 27.500 lm (goniophotometer)
 - Colour temperature output: 6.700K
 - CRI: 70, remotely selectable filters for CRI 80 and CRI 90
 - Illuminance: 260.000 lx @ 5 m
- Light source type: **TE™ 750W HCF White LED Engine** (Patented)
 - HCF - High Colour Fidelity Engine for the best light quality and colour reproduction
 - LED Engine output: 37.000 lm
 - Fixture total lumen output: 22.750 lm (integrating sphere) 17.900 lm (goniophotometer)
 - Colour temperature output: 6.000K
 - CRI: 97, TLCI: 97, TM-30-18 Rf: 92, TM-30-18 Rg: 99
 - Illuminance: 140.000 lx @ 5 m
 - LED life expectancy: min. 50.000 hours
 - Colour temperature: 6.700K
 - Typical lumen maintenance: L70/B50 @ 50.000 hours
 - Light source warranty: 4 years or 20.000 hours

Optical System

- Robe's proprietary optical design
- High-efficiency 13-lens zoom optical system, ratio: 19:1
- Zoom range: □ 3° - 57° (Standard optical range)
 - 2° - 57° (Optical zoom + iris)
 - 0.7° - 2° (Long-Throw mode)
- Output lens diameter: 200 mm
- parCoat™ - (particle resistant coating) unique hydrophobic and oleophobic coating helps prevent water, dirt, dust, haze and smoke from adhering to the output lens

Dynamic Effects and Features

- Cyan: 0 - 100%
- Magenta: 0 - 100%
- Yellow: 0 - 100%
- Variable CTO: 3.000K - 6.700K
- Colour Wheel 1: 5 fixed dichroic colours + white
- Colour Wheel 2: 5 fixed dichroic colours + white
- ChromaTint™ - Patented plus / minus green correction function
- Full curtain framing shutters: Patented Plano4 FC™ framing shutters module with 4 individually positionable blades plus rotation of the complete framing system +60°
- Static gobo wheel: 9 static and replaceable gobos + open
- Rotating gobo wheel: 7 rotating, indexable and replaceable

- Animation wheel: Aluminium animation wheel, used alone or in combination with gobos, rotating in both directions at variable speed
- MLP™ - Patented Multi-Level Prisms allow multiple prisms to be "stacked" while retaining individual speed and direction control. With variable shape and size it creates unlimited dynamic, multi-level flower and beam effects:
 - Prism 1: Independent 6 facet linear prism rotating in both directions at variable speed
 - Prism 2: Independent 6 facet circular prism rotating in both directions at variable speed
- Iris: Motorized, stepless, pulse effects up to 3 Hz
- MagFrost™ - magnetic paddle fast change system providing exchangeable frosts containing as standard a very light 1° for instant softening of the projected gobo or framing shutters, and a medium 5° for even wash, both specifically selected for theatre and TV use
- Motorised zoom and focus
- Electronic strobe effect with variable speed up to 20 Hz
- L3™ - (Low Light Linearity) Imperceptible 18 bit dimming for ultra smooth fade to black
- Cpulse™ special flicker-free management for HD and UHD cameras, ready for 8K and 16K
- AirLOC™ (Less Optical Cleaning) technology greatly reduces the level of airborne particles drawn over the optical elements. This increases the overall performance, light quality and time between routine cleaning and maintenance.

- Extremely quiet operation suitable for all types of production in Theatre and TV
- POLAR+™ for power saving and instant operation in extremely cold weather conditions
- xR7™ eXtreme Reach Follow Spot technology enables you to achieve unprecedented light levels, even the narrowest beam angle of 0.7 degrees
- CamFit™ Prewired for later camera installation
- UpLift™: To ease handling, clip on UpLift handles are designed to ease the burden. Handles are easily attached and removed, greatly easing carrying and lifting of larger fixtures.

Control and Programming

- Setting & Addressing: ROBE Navigation System 2 (RNS2)
- Display: QVGA Robe touch screen with battery backup, gravitation sensor for auto screen positioning, operation memory service log with RTC, stand-alone operation with 2 editable programs (each up to 80 steps), built-in analyser for easy fault finding, NFC app controller
- Protocols: USITT DMX-512, RDM, ArtNet, MA Net, MA Net2, sACN
- REAP™ - Robe Ethernet Access Portal
- Wireless CRM™ technology from Lumen Radio
- Epass™: Ethernet pass through switch which sustains Ethernet integrity, when the fixture has no power, to automatically maintain network connectivity
- RAINS™ (Robe Automatic Ingress Neutralization System) manages humidity, temperature and pressure control using an active monitoring system to automatically remove any moisture detected within the fixture and provides constant monitoring to ensure peak performance
- DMX Protocol modes: 1
- Control channels: 53
- Pan & Tilt resolution: 16 bit
- CMY & CTO: 8 bit
- + - Green correction: 8 bit
- Colour wheel positioning: 8 or 16 bit
- Static gobo wheel positioning: 8 or 16 bit
- Rotating gobo wheel positioning: 8 bit
- Gobo indexing & rotation: 8 or 16 bit
- Animation wheel: 8 bit
- Animation wheel rotation: 8 bit
- Prism indexing & rotation: 8 bit
- Iris: 8 or 16 bit
- Frost: 8 bit
- Zoom: 8 or 16 bit
- Focus: 8 or 16 bit
- Dimmer: 16 bit (internal 18 bit)

Movement

- Pan movement: 540°
- Tilt movement: 270°
- Controllable speed of Pan & Tilt movement
- EMS™: Electronic Motion Stabilizer system for Pan & Tilt reducing beam deviation caused by truss movement or vibration (Patented)
- Automatic Pan & Tilt position correction
- MAPS™ - Motionless absolute positioning system for Pan and Tilt (Patented)

Static Gobos

- Patented slot & lock system for easy replacement of gobos
- Aluminium wheel with 9 fixed gobos + open position

Rotating Gobos

- Glass gobos: 7 rotating gobos + open
- Outside diameter: 21.3 mm
- Image diameter: 18 mm
- Thickness: 1 mm
- Max. thickness: 3.5 mm
- High temperature borofloat or better glass
- Patented slot & lock system for easy replacement of gobos

Effect Wheel

- Single animation wheel
- Material: Aluminium
- Can be used alone or in combination with rotating gobos
- Rotating in both directions at variable speed

Camera

- Type: XNZ-L6320A
- Resolution: 1920 x 1080, 16:9 Full HD (1080p) resolution support
- Zoom:
- 32x optical zoom
- 32x digital zoom
- Vision: Day & Night (ICR), WDR (120dB), Defog
- Streaming: H.264, MJPEG dual codec, Multiple streaming
- Minimum illumination: 0.05 Lux
- parCoat™ (particle resistant coating) unique hydrophobic and oleophobic coating helps prevent water, dirt, dust, haze and smoke from adhering to the output lens

Framing Shutters System

- Full curtain framing shutters: 4 Blades, each with separate movement and rotation control
- Movement: Smooth with variable speed, ultrafast blade movements for creating mid-air effects
- Rotation: +- 60° of the complete framing system

Thermal Specification

- Maximum ambient temperature: 50°C (122°F)
- Maximum surface temperature: 80°C (176°F)
- Minimum operating temperature: -50°C (-58°F)

Electrical Specification and Connections

- Power supply: Electronic auto-ranging
- Input voltage range: 100-240 V, 50/60 Hz
- Power consumption: max. 950 W
- Power connector in: Neutrik powerCON TRUE1
- DMX and RDM data in/out: IP65 Locking 3-pin & 5-pin XLR connectors
- Ethernet port out: IP65 RJ45 - camera video output
- Ethernet port in/out: IP65 RJ45, for Embedded Epass™ switch 10/100 Mbps
- USB connector (series C) for lightmaster purposes

Approvals

- CE Compliant
- cETLus Compliant

Mechanical Specification

- Height: 760 mm (29.92") - head in vertical position
- Width: 458 mm (18.03")
- Depth: 289 mm (11.37") - head in vertical position
- Weight: 37.5 kg (82.7 lbs)
- Ingress protection rating: IP65

Rigging

- Mounting positions: Horizontally or vertically
- Mounting points: 5 pairs of 1/4-turn locking points
- 2x Omega adaptors with 1/4-turn quick locks
- Universal operating position
- Safety cable attachment point
- Pan & Tilt transport locks

Included Items

- User Manual
- Omega Adaptor CL-regular 2 pcs: 10980033
- Power cord including powerCON TRUE1 In connector
- RoboSpot Camera (IESPRITE® LTL FS)
- Balancing Weight Cover for CamFit (IESPRITE® LTL FS)

Optional Accessories

- UpLift™ Removable Handles (2 pcs): 10981219
- iESprite LTL WB ISE-TE™ 750W XP White LED Engine: 14080103
- CamFit kit: 10980885
- Doughty Trigger Clamp: 17030386
- Frost 0.5° (exchange) assembled: 10980583
- Frost 10° (exchange) assembled: 10980497
- Frost 20° (exchange) assembled: 10980574
- Frost 30° (exchange) assembled: 10980584
- Safety wire 36 kg
- Single Top Loader Case
- Dual Top Loader Case
- Foam Shell

Legal

- iESPRITE® LTL WB and iESPRITE® LTL FS are Trademarks of Robe lighting s. r. o.
- iESPRITE® LTL WB and iESPRITE® LTL FS are patented by Robe lighting s. r. o. and is protected by one or more pending or issued patents



Colour Wheel 1

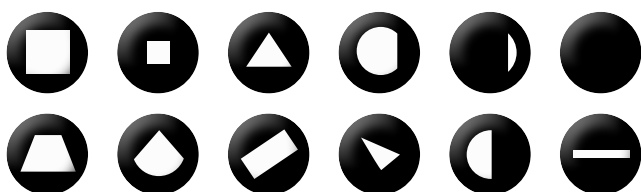


Static Gobo Wheel



Full Curtain Framing Shutters

The next-generation, patented Plano4 FC™ framing shutter system enables complete beam curtaining with each individual blade, offering unmatched flexibility and enhanced effect capabilities.



UpLift™

To ease handling, clip-on UpLift handles are designed to ease the burden. The handles are easily attached and removed, greatly easing carrying and lifting of larger fixtures.

Colour Wheel 2

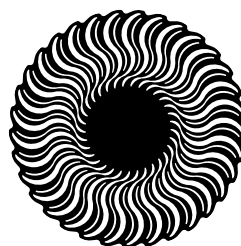


Rotating Gobo Wheel



Animation Wheel

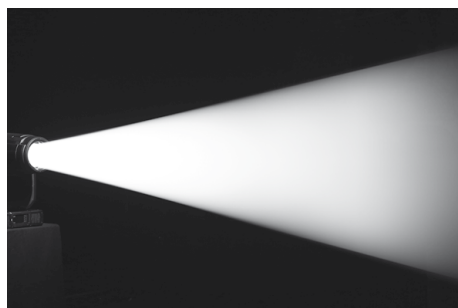
Designed for maximum versatility with minimal light loss, the animation wheel offers bi-directional rotation and speed control. It can be used alone or combined with gobos to create dynamic, high-impact visual effects.



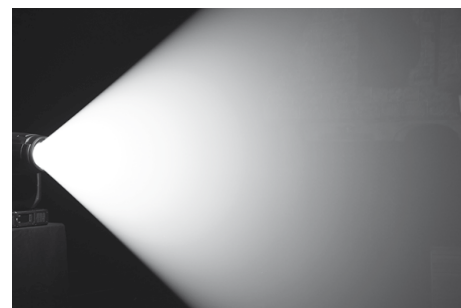
3.5° Min. Zoom



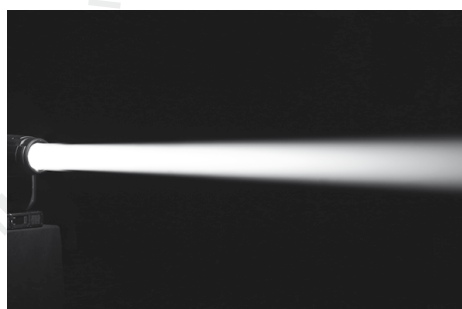
25° Mid. Zoom



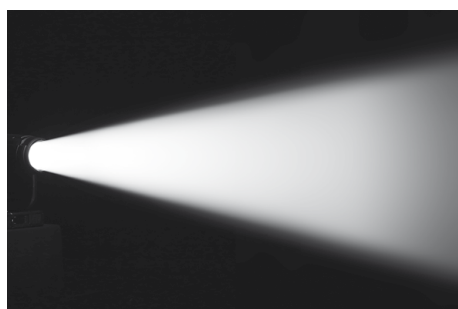
55° Max. Zoom



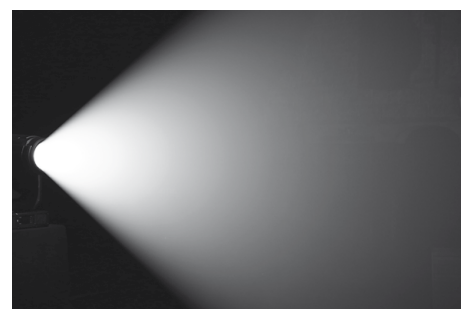
3.5° Min. Zoom with 5° Frost



25° Mid. Zoom with 5° Frost

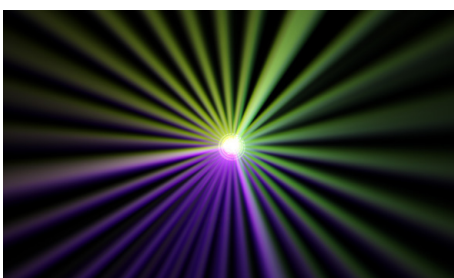
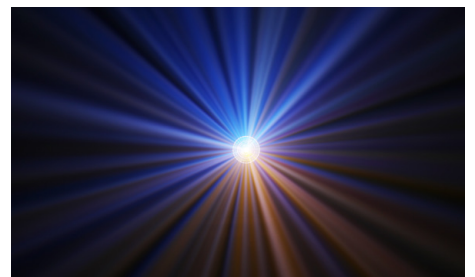
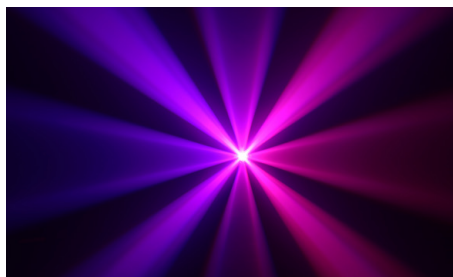
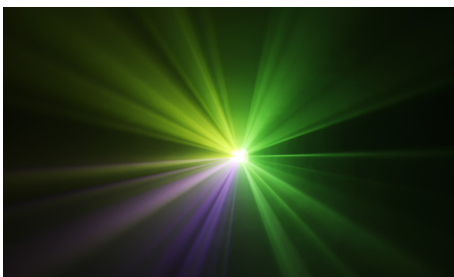
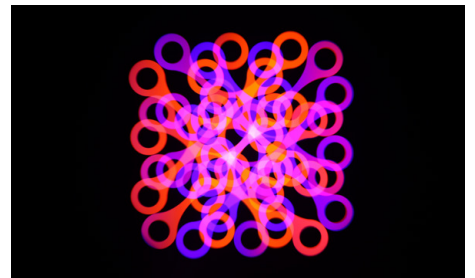
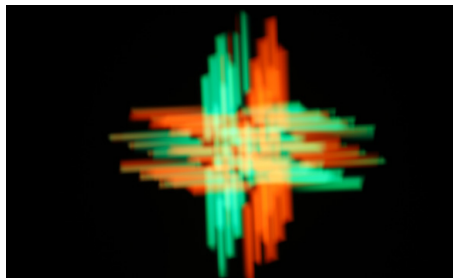
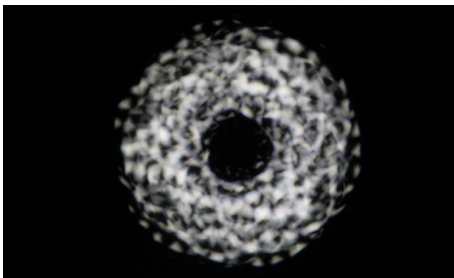
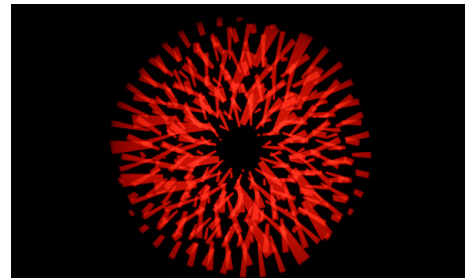
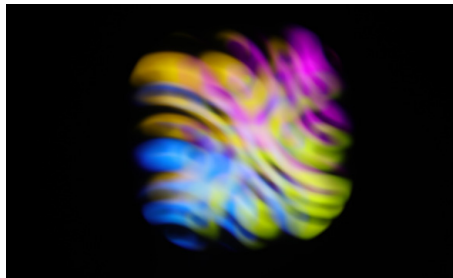
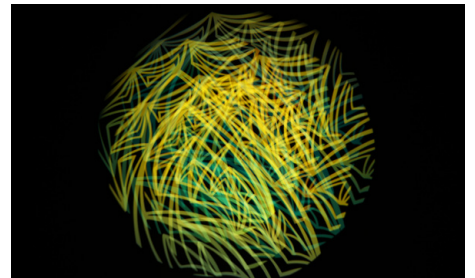
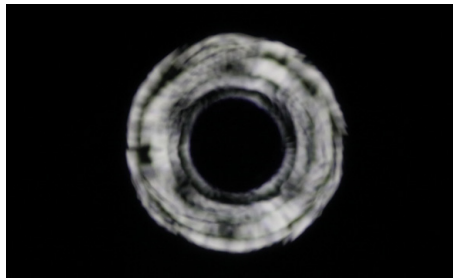
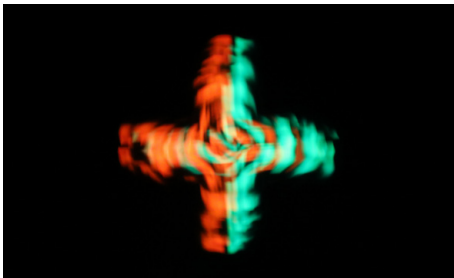
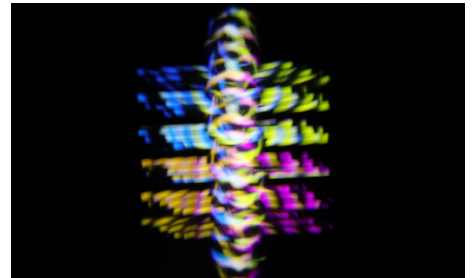
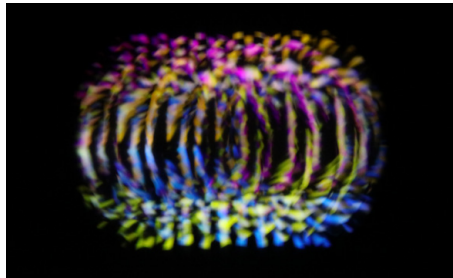


55° Max. Zoom with 5° Frost

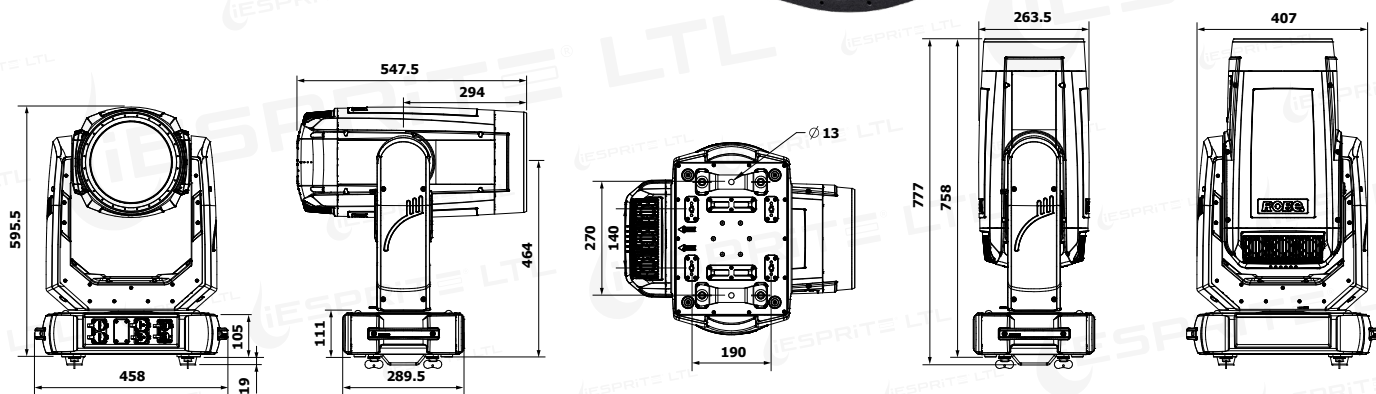


Impressive Aerial and Graphic Effects

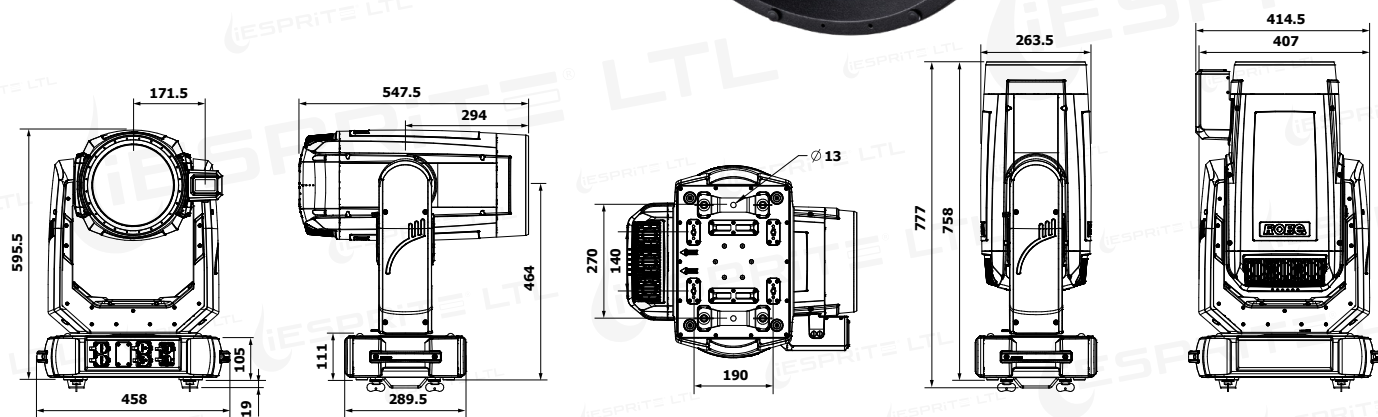
iESPRITE® LTL unlocks endless possibilities for breathtaking animations and mid-air effects, offering unparalleled creative potential. With two gobo wheels featuring meticulously selected break-up and aerial gobos, you can craft mesmerizing visuals that captivate any audience. Enhance your designs further with a 6-facet circular or linear rotating prism-or both-along with an animation wheel, split colours, and a unique multi-colour filter. When combined, these features allow you to create stunning effects, from drifting clouds and cascading rain to shimmering water, roaring fire, and abstract morphing imagery.



IESPRITE[®] LTL WB



IESPRITE[®] LTL FS



iESPRITE® LTL FS TRANSFERABLE ENGINE



www.robe.cz



Head office: ROBE lighting s. r. o. | Házovice 2090 | 756 61 Rožnov pod Radhoštěm | Czech Republic
Tel.: +420 571 751 500 | E-mail: robe@robe.cz

Factory: ROBE lighting s. r. o. | Palackého 416 | 757 01 Valašské Meziříčí | Czech Republic

September 2025 © ROBE lighting s. r. o. All specifications subject to change without notice.