



INSTRUCTION MANUAL

COFFEE GRINDER



MODEL 300105RRK

PLEASE READ THIS MANUAL CAREFULLY BEFORE OPERATING
THIS APPLIANCE AND RETAIN IT FOR FUTURE REFERENCE

IMPORTANT SAFETY INSTRUCTIONS

1. Before using this product, please peruse these instructions carefully, including all illustrations.
2. Make sure that your home output voltage corresponds to the voltage stated on the rating label of the appliance. If it does not, please do not use this product.
3. Do not use if the power supply cord, plug or any other electrical parts are damaged. Contact the product distributor or your local service centre for repair.
4. Do not allow the power cord to hang over the edge of the table or come into contact with hot surfaces, as this may damage it.

5. This product cannot be used on the high temperature gas, electric stove and its side, also forbidden in the oven.
6. When this product is in use, it should be placed securely out of the reach of children as injury may be caused by knocking it over or coming into contact with the blades.
7. To avoid fire, leaks and other damage, only use spare parts recommended by the manufacturer.
8. Unplug the appliance from the socket when not in use and before cleaning.
9. When using the grinder, do not add water or other liquids. Do not immerse this product in water or

other liquids to clean it. This product is not dishwasher-safe. Never allow the power plug to become wet. When cleaning or using the blade, do not touch the edge to prevent injury.

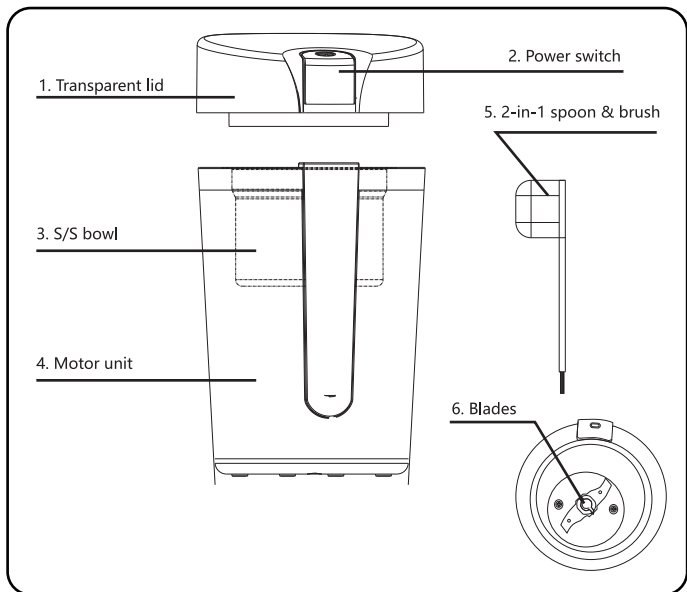
10. Do not use chemicals, iron content, wood chips or other abrasive products to clean the grinder.

TECHNICAL SPECIFICATIONS

Model No.	300105RRK
Power Supply	220-240 V ~ 50-60Hz
Power Consumption	200 W
Dimensions	L101*W101*181 mm

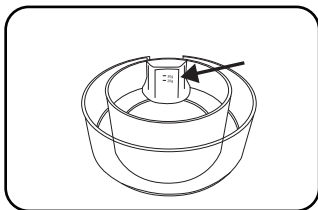
The specifications and design are subject to change without notice.

PRODUCT OVERVIEW

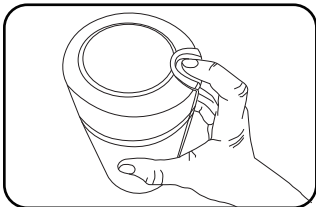


OPERATING INSTRUCTIONS

1. Open the top cover and clean the cup, blade, cover and other parts.
2. Use the cover to measure the coffee to be processed (maximum capacity 60g) and pour into the grinding cup.
3. Replace the cover. The appliance only works when the cover has been installed correctly.



4. Plug the appliance in, and press and hold the power switch to start the grinder. Do not exceed 30s per working cycle and stop for 30s to allow the appliance to cool down between cycles.
5. When the processing is complete, disconnect the power supply and pour the fine powder out of the grinding cup.



CLEANING AND MAINTENANCE

1. Be sure to turn off the switch and disconnect the power before cleaning the product.
2. Remove the lid, rinse under running water and dry completely. The lid cannot be cleaned in a dishwasher.
3. The outside of the appliance can be wiped down with a wet cloth. The appliance must not be immersed or rinsed in water or any other liquid.
4. Before storing the product, make sure it is clean and dry.
5. This product should be stored in a dry place and not exposed to direct sunlight.

DISPOSAL



As a responsible retailer, we care about the environment.

As such, we urge you to follow the correct disposal procedures for the appliance and its packaging materials. This will help conserve natural resources and ensure that these items are recycled in a manner that protects health and the environment.

You must dispose of the appliance and its packaging according to local laws and regulations.

As this appliance contains electronic components, it and its accessories must be disposed of separately from household waste when the appliance reaches the end of its life.

Contact your local authority to learn about your disposal and recycling options.

The appliance should be taken to your local recycling centre. Some collection points accept appliances free of charge.

WARRANTY: 2 YEARS



AIGOSTAR INTERNATIONAL LIMITED
UNIT 4 TEES VALLEY COURT GLENARM ROAD
WYNYARD TS22 5FE GB
GB311003583

[HTTP://WWW.AIGOSTAR.COM](http://www.aigostar.com)
MADE IN CHINA