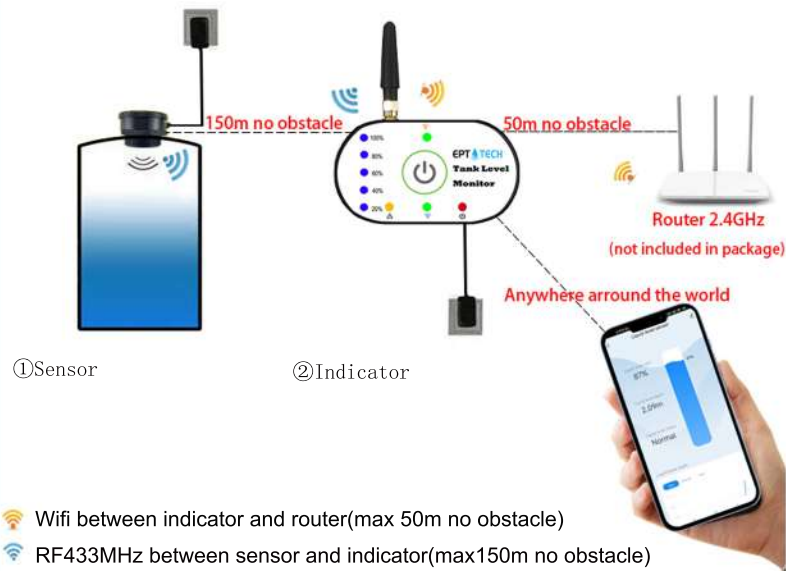


USER MANUEL



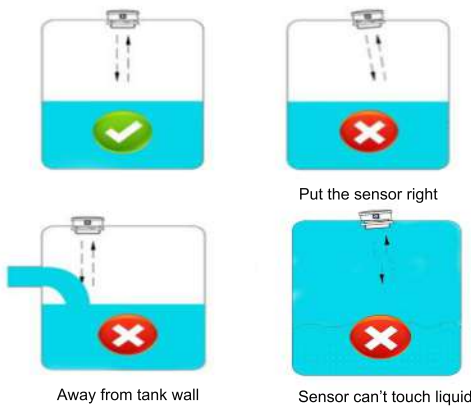
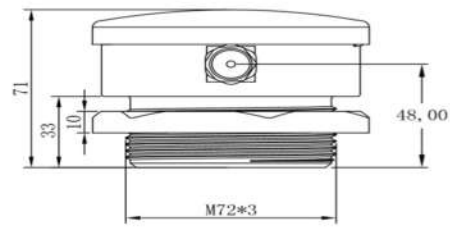
1. DEFINITION



- Wifi between indicator and router(max 50m no obstacle)
- RF433MHz between sensor and indicator(max150m no obstacle)
- Power
 - Blue LED: 20%,40%,60%,80% and 100%
- Yellow LED on/off: Pump on/off
- Yellow LED flash: Alarm and buzzer beeping.
- Pump Refilling: only alarm when tank is high level
- Pump Draining: only alarm when tank is low level
- Button: 1)Press 3 seconds for wifi connection
2)click to turn off the alarm

2. INSTALLATION

- 1) Tear off the 3M tape on the Indicator and mount on wall.Connect the indicator to power adapter and power on.
 - 2)Mount the sensor on top of the tank.Connect the sensor to power adapter and power on.
- Notice: 1)Power on the indicator first, and then power on the sensor.
2) The sensor should be in the middle of the tank and not on a liquid inlet.Please refer to the following pictures for the best installation positions. The hole should be 72mm.

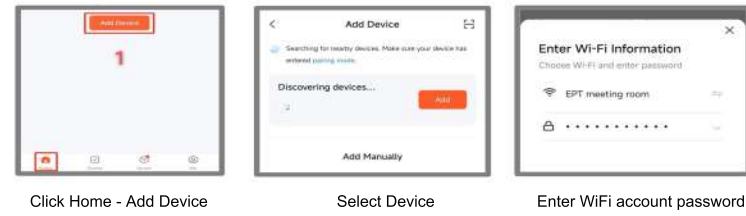


3. CONNECTION

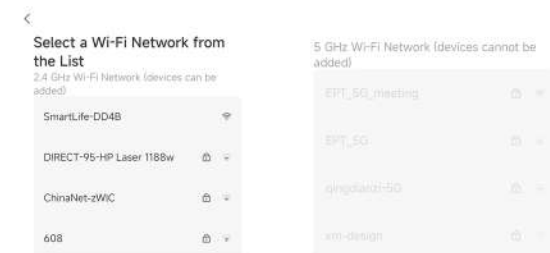
- 1) Scan code to download "TUYA Smart APP"or "Smart Life APP" on mobile device.



- 2) Turn on the W-Fi and bluetooth of your phone,enter the app and add device



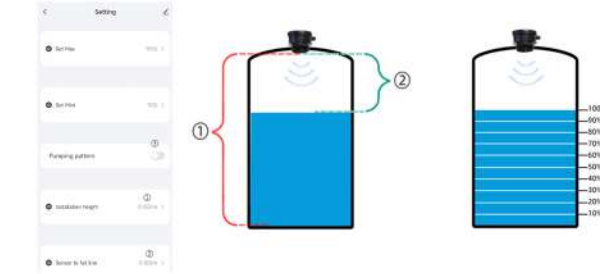
Note: WIFI frequency can only be 2.4GHz, not 5GHz:



When adding device, make sure that the indicator and the mobile are connected to the same WIFI.
After setting,the indicator must work under wifi.If the mobile phone can't find the device or fails to connect the device, please press the button of the indicator until beep sounds to add the device again

4.SETTING

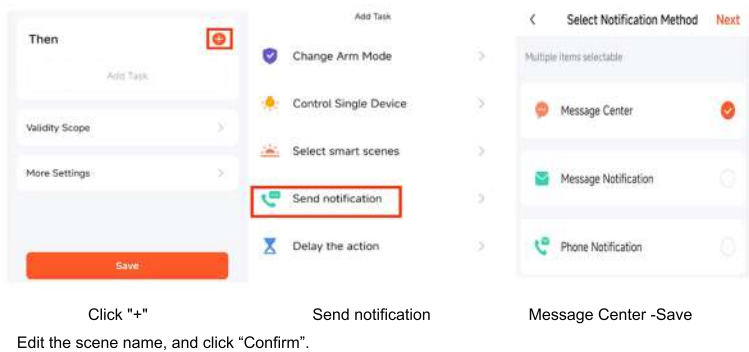
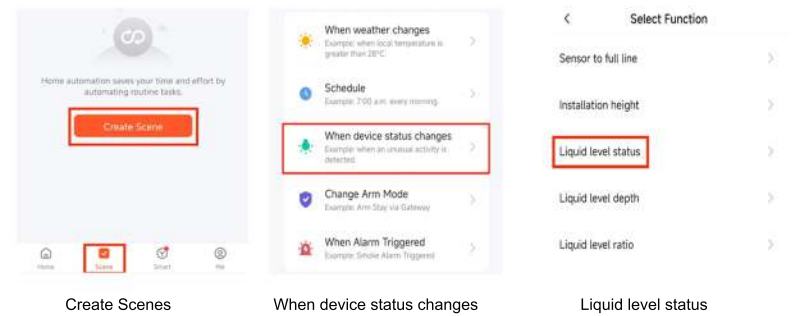
- 1) Set Installation height ①
It is distance from sensor to tank bottom
- 2)Set sensor to liquid full line ②
It is distance from sensor to full line
- 3) Select the pump working mode (Refilling by default) or drainage mode ③
- 4) Set Max for high level alarm
- 5) Set Min for low level alarm



Note:The installation height is different with tank height because the sensor may be install over the tank height.

- 6) Set Alarm

Go back to the home page, click "Scenes",



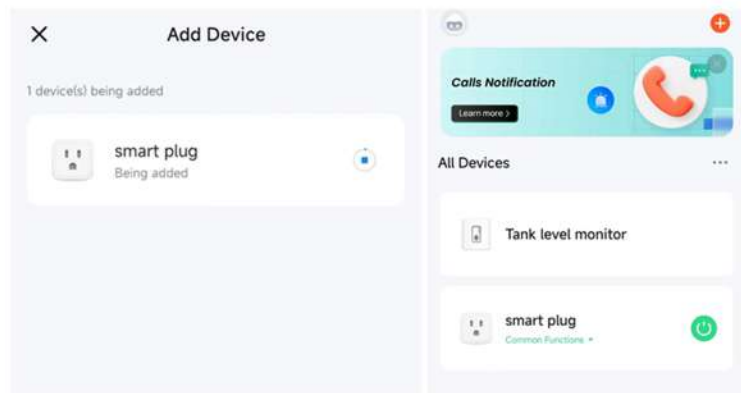
5. MULTI-TANK MONITORING



◆Be able to monitor several tanks in one time

6. WIFI SMART SOCKET(OPTIONAL)

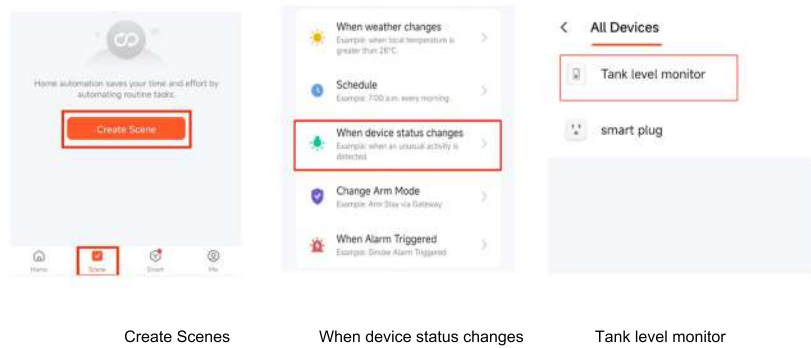
- 1) Power on smart plug,LED flashes to enter connection mode.If it doesn't flash, please press the button of plug for 10 seconds.
- 2) Open the APP to add smart plug.



Add Device

Home Page

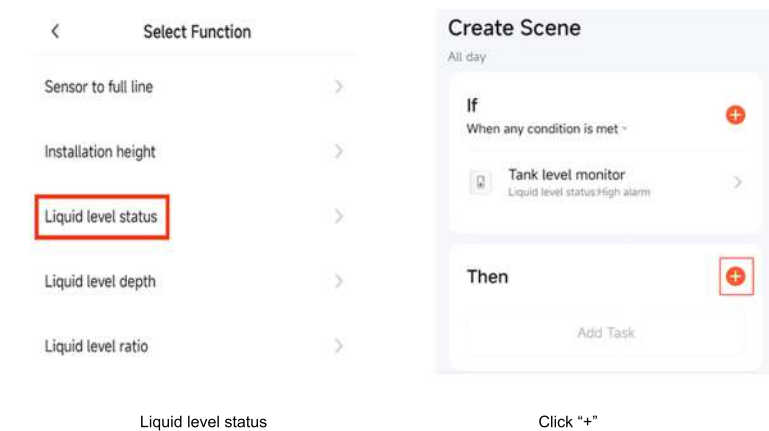
2)Create a scene



Create Scenes

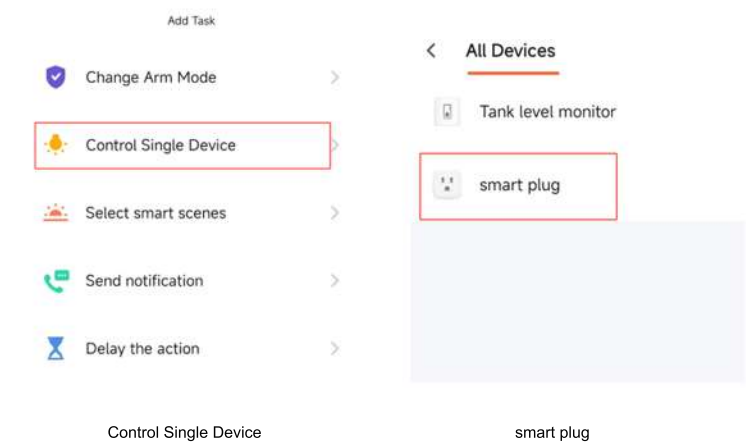
When device status changes

Tank level monitor



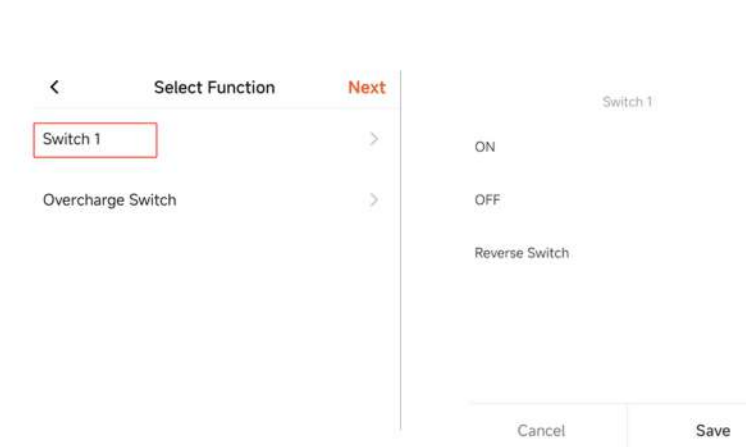
Liquid level status

Click "+"



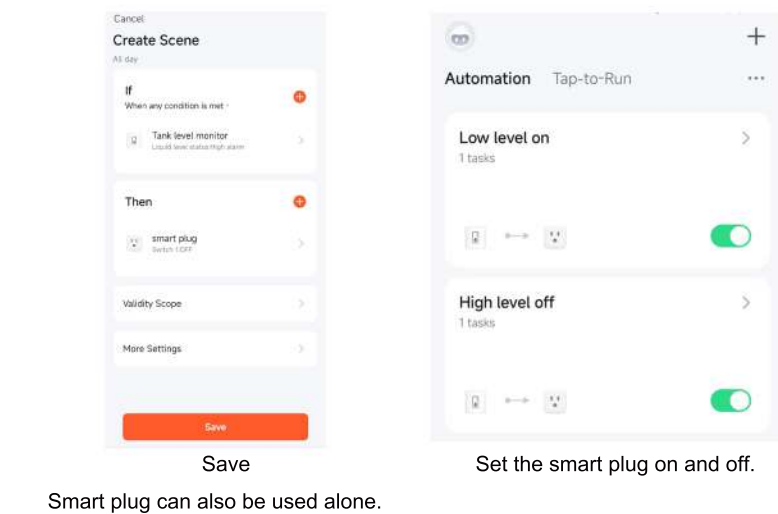
Control Single Device

smart plug



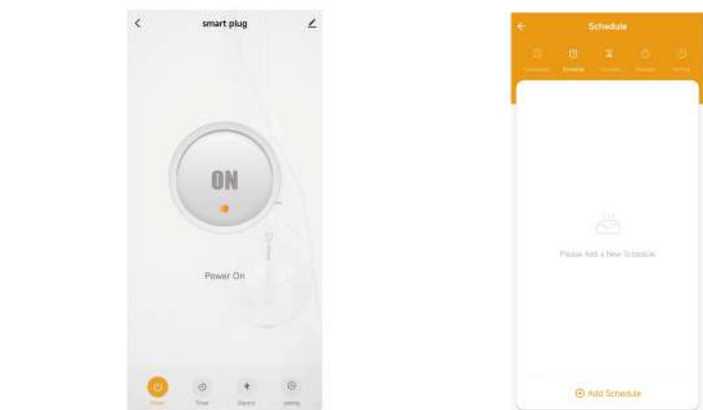
Switch 1

ON/OFF-Save



Save

Smart plug can also be used alone.



◆APP control, free your hands

◆It can be timed, saving labor and electricity.

◆For details, please refer to the smart plug User Manual.