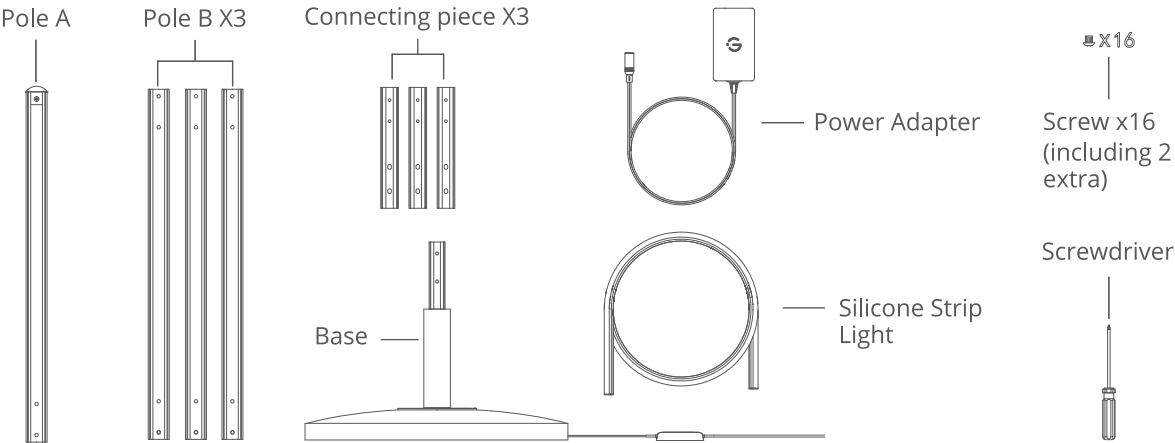
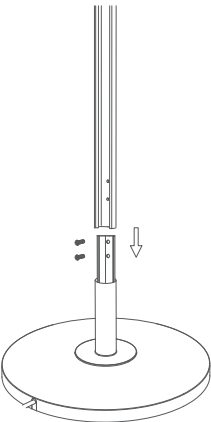


Quick Start Guide

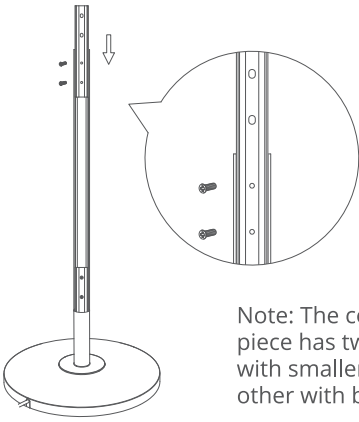
Govee Lyra Basic Floor Lamp



Step1 Slide the metal slots of the first Pole B onto the base, and tighten them with two screws.

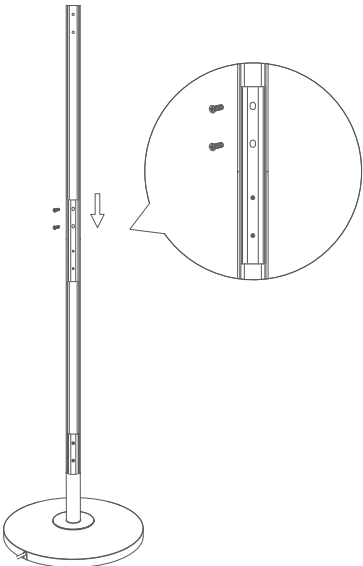


Step2 Insert a connecting piece with the end showing the smaller holes into the pole. Align its holes with the pole and tighten them with two screws.

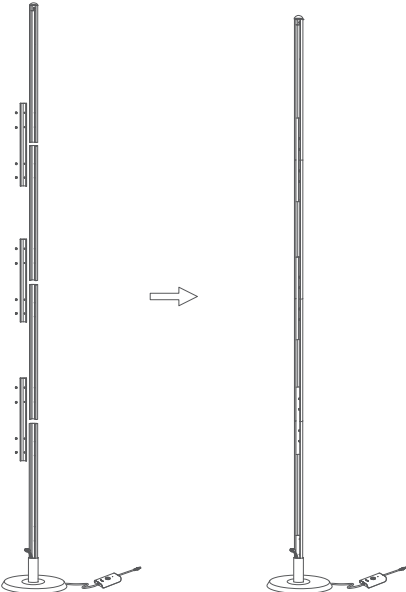


Note: The connecting piece has two ends: one with smaller holes and the other with bigger holes.

Step3 Take the second Pole B, align its metal slots with the bigger holes of the connecting piece, and tighten them with two screws. Make sure the two poles are closely aligned and tightened.

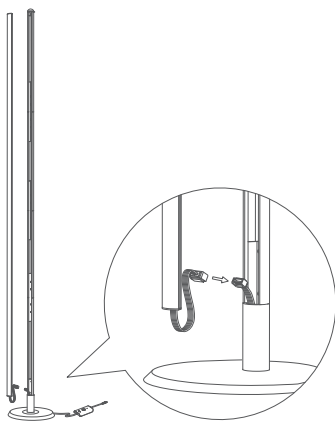


Step4 Repeat the process of steps 2 and 3 with the third Pole B. Pole A should be the last one to be attached.



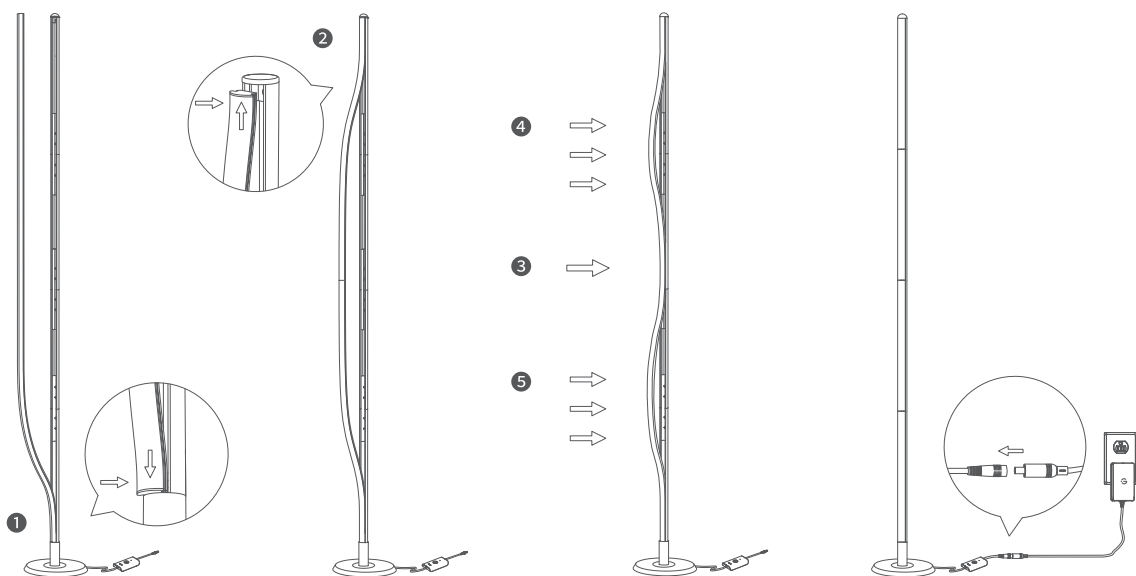
Step5

Straighten the silicone strip light. Connect the wires on the silicone strip light to the wires in the lamp base (wires should be connected by color)



Step6

Ensure the exposed wires are inside the lamp base. Attach the silicone strip light by following the image above. Finally, press the strip light from the middle outwards to the two ends. Connect the adapter to the cable of the lamp base and plug the adapter into a power outlet.

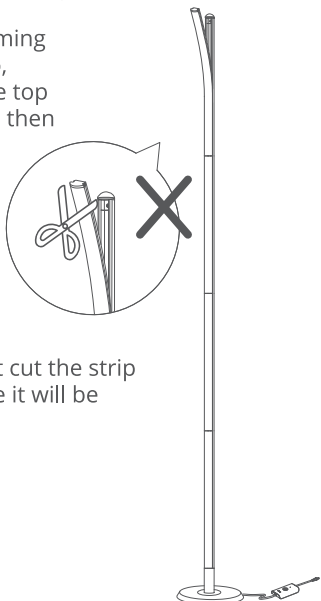


Troubleshooting

1. The silicone light strip is too long.

- Take out the strip from the pole;
- Follow step 6 to reinstall.

Note: To avoid deforming the silicone light strip, please press from the top and bottom first, and then press the middle.



2. After installing all the poles, the gap between them is large or they are skewed.

- Remove the screws and connecting pieces;
- Follow step 2 to step 4 to reinstall.

Note: The connecting piece has two ends: one with smaller holes and the other with bigger holes. Please tighten the smaller hole into the screw first, and then the bigger hole. Make sure the two poles are closely aligned and tightened.

