

# MOTORCYCLE INTELLIGENT NAVIGATION MANUAL

## Operating Instructions

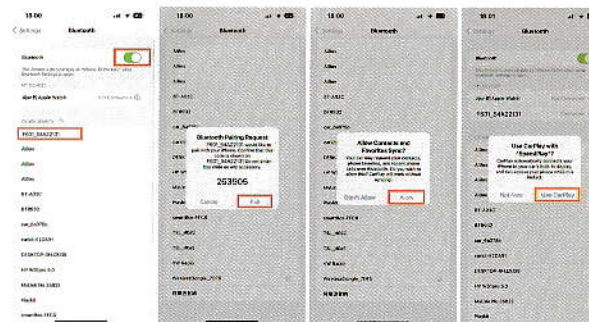
### 1.CarPlay

Click the CarPlay icon application icon to enter the application interface and connect the device according to the prompts.



① Turn on iPhone WLAN

② Turn on the Bluetooth of the iPhone, search for the bluetooth device naming "F601\_xxxxxxx", Pair it and allow the sync, finally click "Use CarPlay"



③ After successful connection, enter the CarPlay interface, you can use carplay call, navigation, music and so on

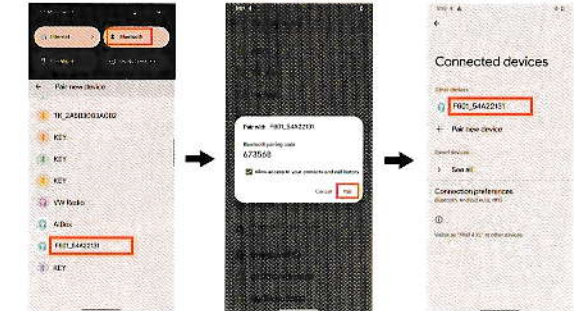
### 2.Android Auto

Click the Android Auto icon application icon to enter the application interface and connect the device according to the prompts.



① Turn on Phone WiFi

② Turn on the Bluetooth of the Phone, search for the bluetooth device naming "F601\_xxxxxxx", Pair it and allow the sync, Waiting for a connection to come in.

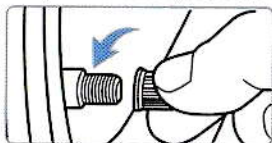


③ After successful connection, enter the Android Auto interface, you can use Phone call, navigation, music and so on

### 3. Tire pressure monitoring

First click Match on the tire pressure application interface, then install the corresponding tire sensor

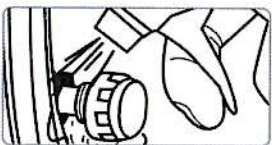
Easy installation in just 3 steps



1. Remove the existing valve cover



2. Click "Pair" on the tire pressure interface and then install the tire pressure sensor



3. Check air tightness

## Tire Pressure Monitoring Sensor



### 4. Wiring method

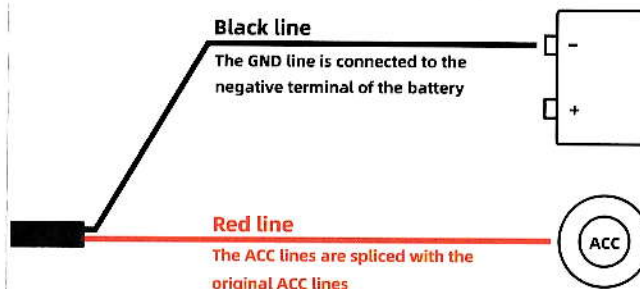
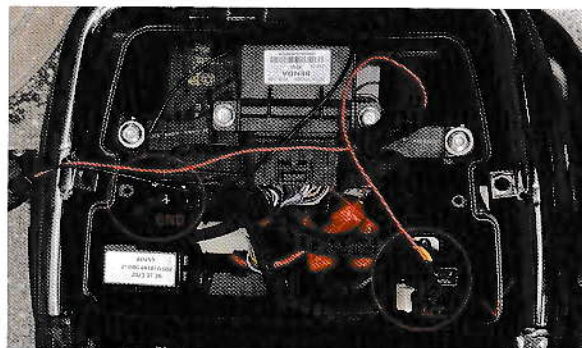


Illustration:



## Precautions

To avoid injury or property loss to the user or other persons, please read and follow the following precautions carefully.

1. Read the operating instructions: Before operating the machine, you must read and understand all the operating instructions.
2. Save this instruction manual: After reading this manual carefully, you must keep it properly for future reference.
3. Comply with all warnings and instructions: All warnings and instructions on this product and the manual must be strictly followed.
4. Accessories: Please do not use accessories not recommended by this manufacturer. If inappropriate accessories are used, accidents may occur.
5. Do not dismantle or modify the product: It is strictly forbidden to dismantle or modify the machine, or cut the power cord and connect it to other power sources, which will cause the product to smoke, catch fire, electric shock or cause malfunctions.
6. Do not insert foreign objects into the machine: If metal objects (coins, tools, etc.) or flammable materials enter the machine, it may cause heating, fire, electric shock and malfunctions due to short circuits.
7. When a fault or abnormality occurs: When the machine is in an abnormal condition such as smoke or odor, please stop using it immediately, turn off the power supply and contact the dealer to avoid dangers such as fire or electric shock.
8. Avoid heat sources: Do not install the machine in a place exposed to direct sunlight or high temperature.
9. Use an appropriate power supply: The machine is designed to use a 12v DC cathode grounded battery system.
10. Safety check: Do not attempt to repair the machine yourself. Let the maintenance personnel perform a safety check after repair to ensure that the machine is able to operate normally.
11. Do not operate while driving: If you operate while driving, it will cause a traffic accident due to lack of attention in front. Be sure to park the car in a safe place before operating.
12. When washing the car: Do not expose the machine and other supporting equipment, to water and make it excessively wet.
13. When parking: Parking the car in the sun will cause the temperature inside the car to be too high. When turning on the machine, please cool it down first.