



JLAB  
GO  
KEYBOARD

**We love that you are rocking JLab!**  
**We take pride in our products and fully stand behind them.**



#### YOUR WARRANTY

All warranty claims are subject to JLab authorization and at our sole discretion. Retain your proof of purchase to ensure warranty coverage.



#### CONTACT US

Reach out to us at [support@jlab.com](mailto:support@jlab.com) or visit [jlab.com/contact](http://jlab.com/contact)

### REGISTER TODAY

[jlab.com/register](http://jlab.com/register)

Product updates | How-to tips  
FAQs & more

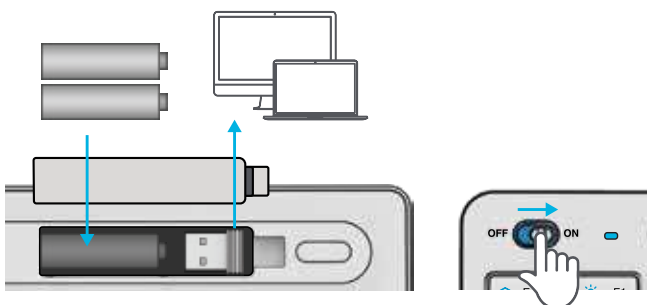
## 1 CONNECT WITH DONGLE

#### Install included batteries

2 batteries included in package

#### Install 2.4 dongle and turn keyboard on

GO Keys will auto connect



#### Have a JLab GO Mouse?

Scan the QR code to learn how to pair both your devices with just one dongle.

## 2 CONNECT WITH BLUETOOTH

#### Quick Press CONNECT

Switch to preferred connection:

Purple = 2.4

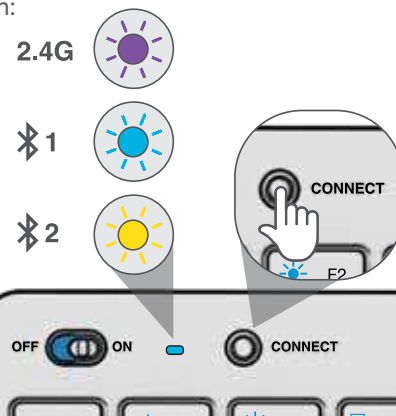
Blue = 1

Yellow = 2

#### Press and hold CONNECT

LED will blink in pairing mode

Select "JLab GO Keys" in device settings



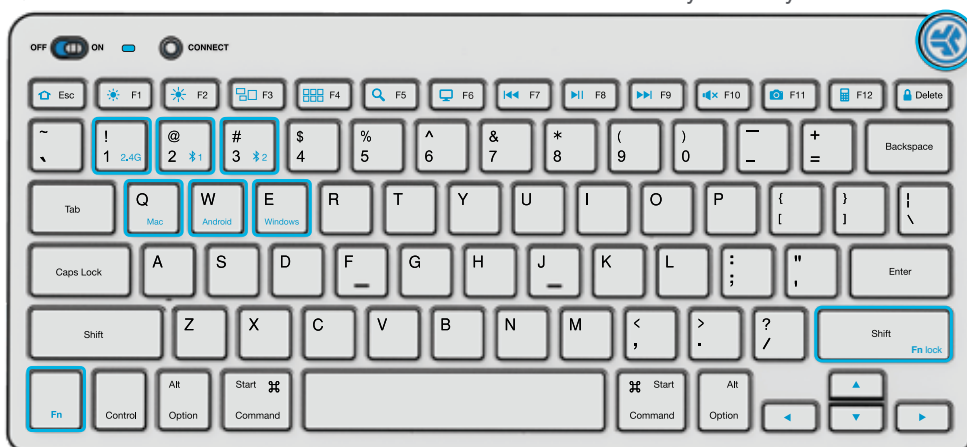
## 3 KEYS

#### Fn + 1 / 2 / 3:

Quick connection switch

#### Fn + Q / W / E:

Switch to Mac / Android / Windows keyboard layout



#### MEDIA DIAL

Vol +/- : Rotate

Play/Pause: Single press

Track Forward: Double press

Track Back: Press and hold

#### Fn + Right Shift:

Lock / Unlock Fn key (See Shortcut Keys)

## SHORTCUT KEYS

<b>Fn +</b>	<b>MAC</b>	<b>PC</b>	<b>Android</b>
<b>Esc</b>	N/A	Homepage	Homepage
<b>F1</b>	Brightness -	Brightness -	Brightness -
<b>F2</b>	Brightness +	Brightness +	Brightness +
<b>F3</b>	Task Control	Task Control	N/A
<b>F4</b>	Show Applications	Notification Center	N/A
<b>F5</b>	Search	Search	Search
<b>F6</b>	Desktop	Desktop	N/A
<b>F7</b>	Track Back	Track Back	Track Back
<b>F8</b>	Play/Pause	Play/Pause	Play Pause
<b>F9</b>	Track Forward	Track Forward	Track Forward
<b>F10</b>	Mute	Mute	Mute
<b>F11</b>	Screenshot	Screenshot	Screenshot
<b>F12</b>	Dashboard	Calculator	N/A
<b>Delete</b>	Screen lock	Screen lock	Screen lock

## QUICK TIPS

- When connecting through Bluetooth on Mac/PC/Android, GO Keyboard should be in Bluetooth 1 or Bluetooth 2 setting. Press hold CONNECT button until the light starts blinking. Enter your Bluetooth device settings to connect.
- If your device is not connecting, Forget the “JLab GO Keys” in you device settings. Turn off and on the the GO Keyboard. Press hold the CONNECT button until blinking light to enter pairing mode. Reenter your device settings to repair.
- If the 2.4G USB dongle is not registering connection:
  1. Remove dongle
  2. Press Fn + 1 to enter 2.4G connection
  3. Press and hold CONNECT button until purple light blinks
  4. Plug dongle back in
- Keys are non-removeable. Do not try to remove in any circumstance.
- To clean the keyboard, do not use spray cleaner directly on the keyboard. Lightly spray a cloth or microfiber fabric and then wipe the keyboard.
- To completely disconnect all wireless devices and return to factory settings, press hold "T"+"H"+"J" for 3+ seconds.



[Shop products](#) | [Product alerts](#) | [Burn-in your headphones](#)

JLab Store + Burn-in Tool

