

Smart Sports Bracelet

Instruction Manual



Lead a Healthy Life

Pre-use Notes

1. The company reserves rights to modify the instruction manual without any further notification. Some functions may be different in specific software versions, which is normal;
2. Please charge the product for 2 hours prior to your use;
3. Download the mobile APP that is used to connect to bracelet before your use. The APP can synchronize time and allow you to set personal information. For detailed information, please refer to the subsequent instructions involving software synchronization;
4. Keep away from hot water, tea water and any other corrosive liquid. Although it is IP67 waterproof, it isn't suitable for diving (> 2m), which may lead to water inflow. Any damage incurred by the above-mentioned issues won't be covered by the product quality warranty and free maintenance scope;
5. The product only serves as electric detection function. All data is for daily reference, but not medical use;
6. Keep a proper tightness between bracelet and your arm; too tight or loose may lead to inaccurate measurement. If it is wore too tight or too loose, blood flow and sensor detection may be separately affected;
7. Avoid to crash into hard items, which may break its glass.

Special Notes

1. iOS: If it isn't used for more than 2 hours ($\geq 2h$), in standby or sleep state (the mobile phone isn't used for a long time and its display is off), WillWatch2 will be removed by iOS system. At this time, the APP is disconnected with the bracelet, making the APP fail to use. Open the APP again, then it will automatically connect to the bracelet;
2. Android: Enable permissions of the APP on mobile settings after a successful APP installation. Each mobile phone is different and we take Huawei as an example: settings - APP - enable APP management - WillWatch2. Find the APP - change automatic management to manual management - enable all permissions (enable self-starting, association start-up and background activity). This work is only used to keep the connection between the mobile phone and bracelet Bluetooth when the mobile phone is in standby state (its display is off), but not be removed by Android system. In addition, no data flow and mobile electricity will be used.

Recommended Systems

- Support 5.1 operating system and more advanced systems
- Support 10.0 operating system and more advanced systems

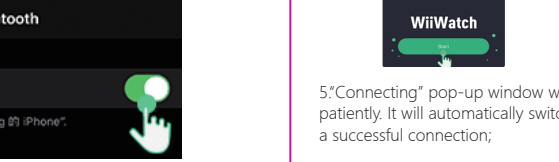
How to Connect

Use browser to scan and download the APP (data flow is required). Enable the corresponding permissions which are important for Bluetooth connection during APP downloading and installation. You can also scan the QR code on the bracelet end to download the APP.

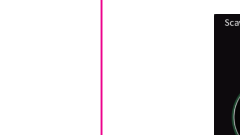


WILLWATCH2

1. Open mobile "settings", click and open Bluetooth;



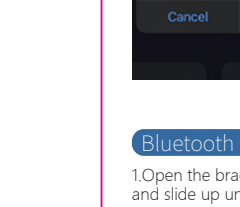
2. Open the bracelet. Slide left to enter the bracelet main interface and slide up until "pairing" is found;



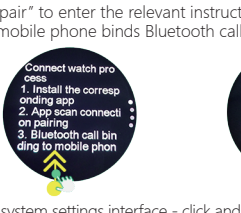
3. Click "pair" to enter the relevant instruction page, then slide up to the QR code interface of "Bind the App";



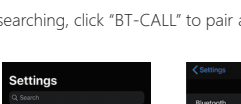
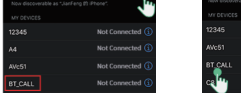
4. Open the APP - click "start" - enter the connection interface - use the mobile phone to scan the QR code to connect;



5. "Connecting" pop-up window will occur at this time. Please wait patiently. It will automatically switch to the APP home page after a successful connection;

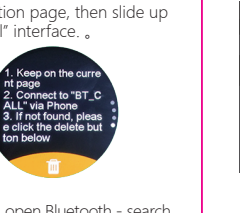
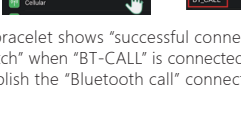


6. After the first successful connection, please click "pair" key, then press "enable" key to accomplish the connection.

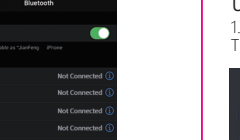


Bluetooth Call Connection

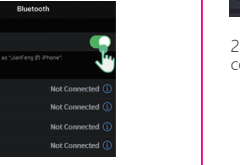
1. Open the bracelet. Slide left to enter the bracelet main interface and slide up until "pair" is found;



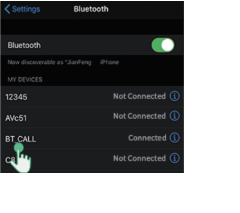
2. Click "pair" to enter the relevant instruction page, then slide up to the "mobile phone binds Bluetooth call" interface. .



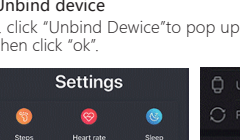
3. Open system settings interface - click and open Bluetooth - search Bluetooth devices until "BT-CALL" is found;



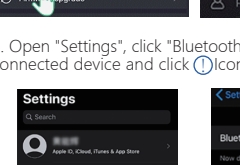
4. After searching, click "BT-CALL" to pair and wait for a successful pairing;



5. The bracelet shows "successful connection, please work with WillWatch" when "BT-CALL" is connected. Click and tick the icon accomplish the "Bluetooth call" connection and pairing.



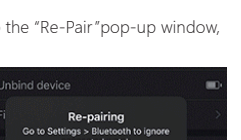
6. After the first successful connection, please click "pair" key, then press "enable" key to accomplish the connection.



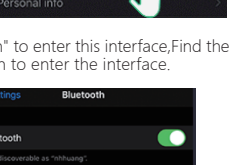
7. After searching, click "BT-CALL" to pair and wait for a successful pairing;



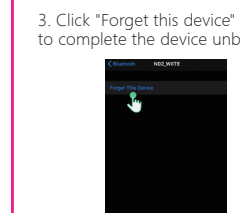
8. After the first successful connection, please click "pair" key, then press "enable" key to accomplish the connection.



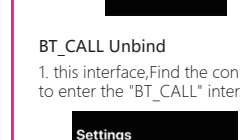
9. After searching, click "BT-CALL" to pair and wait for a successful pairing;



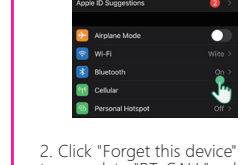
10. After searching, click "BT-CALL" to pair and wait for a successful pairing;



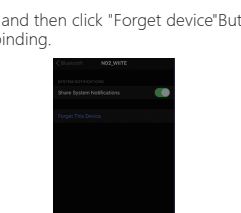
11. After the first successful connection, please click "pair" key, then press "enable" key to accomplish the connection.



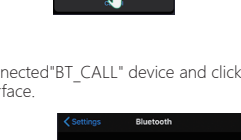
12. After searching, click "BT-CALL" to pair and wait for a successful pairing;



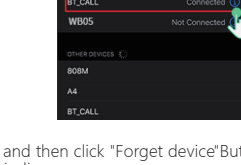
13. After searching, click "BT-CALL" to pair and wait for a successful pairing;



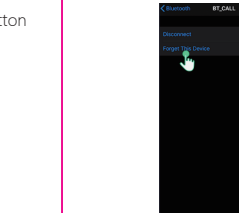
14. After the first successful connection, please click "pair" key, then press "enable" key to accomplish the connection.



15. After searching, click "BT-CALL" to pair and wait for a successful pairing;



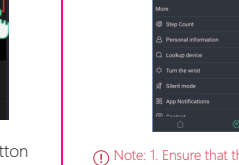
16. After searching, click "BT-CALL" to pair and wait for a successful pairing;



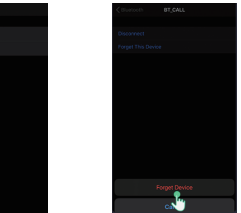
17. After the first successful connection, please click "pair" key, then press "enable" key to accomplish the connection.



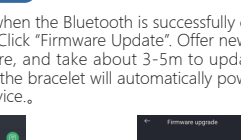
18. After searching, click "BT-CALL" to pair and wait for a successful pairing;



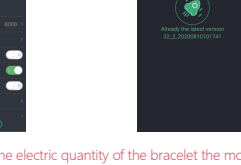
19. After searching, click "BT-CALL" to pair and wait for a successful pairing;



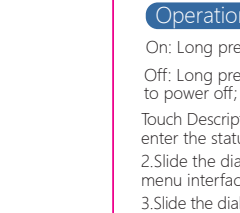
20. After the first successful connection, please click "pair" key, then press "enable" key to accomplish the connection.



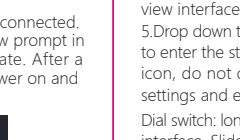
21. After searching, click "BT-CALL" to pair and wait for a successful pairing;



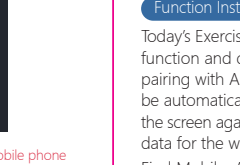
22. After searching, click "BT-CALL" to pair and wait for a successful pairing;



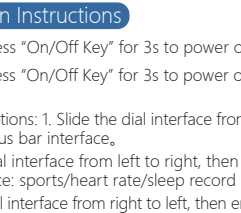
23. After the first successful connection, please click "pair" key, then press "enable" key to accomplish the connection.



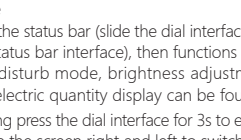
24. After searching, click "BT-CALL" to pair and wait for a successful pairing;



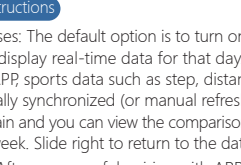
25. After searching, click "BT-CALL" to pair and wait for a successful pairing;



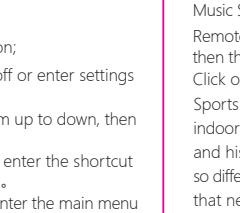
26. After the first successful connection, please click "pair" key, then press "enable" key to accomplish the connection.



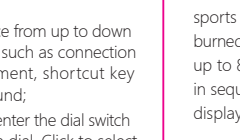
27. After searching, click "BT-CALL" to pair and wait for a successful pairing;



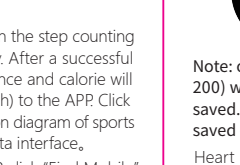
28. After searching, click "BT-CALL" to pair and wait for a successful pairing;



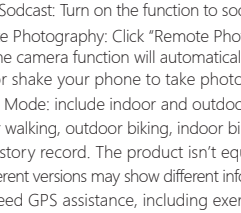
29. After the first successful connection, please click "pair" key, then press "enable" key to accomplish the connection.



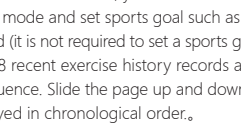
30. After searching, click "BT-CALL" to pair and wait for a successful pairing;



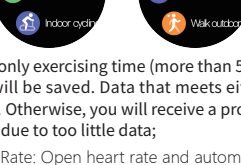
31. After searching, click "BT-CALL" to pair and wait for a successful pairing;



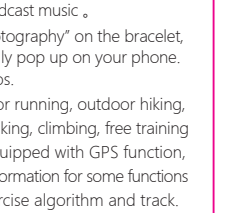
32. After the first successful connection, please click "pair" key, then press "enable" key to accomplish the connection.



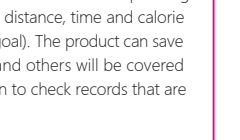
33. After searching, click "BT-CALL" to pair and wait for a successful pairing;



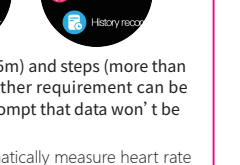
34. After searching, click "BT-CALL" to pair and wait for a successful pairing;



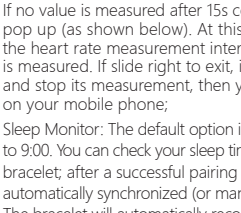
35. After the first successful connection, please click "pair" key, then press "enable" key to accomplish the connection.



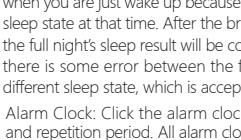
36. After searching, click "BT-CALL" to pair and wait for a successful pairing;



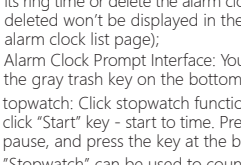
37. After searching, click "BT-CALL" to pair and wait for a successful pairing;



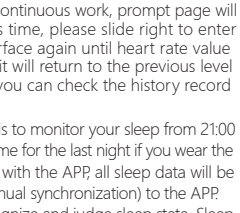
38. After the first successful connection, please click "pair" key, then press "enable" key to accomplish the connection.



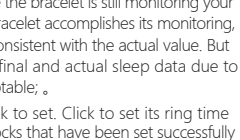
39. After searching, click "BT-CALL" to pair and wait for a successful pairing;



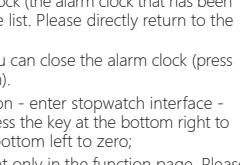
40. After searching, click "BT-CALL" to pair and wait for a successful pairing;



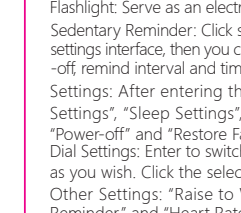
41. After the first successful connection, please click "pair" key, then press "enable" key to accomplish the connection.



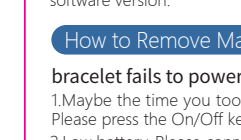
42. After searching, click "BT-CALL" to pair and wait for a successful pairing;



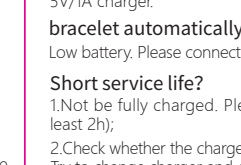
43. After searching, click "BT-CALL" to pair and wait for a successful pairing;



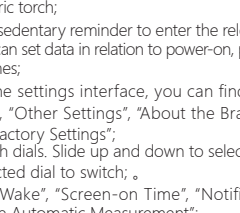
44. After the first successful connection, please click "pair" key, then press "enable" key to accomplish the connection.



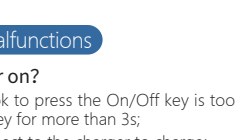
45. After searching, click "BT-CALL" to pair and wait for a successful pairing;



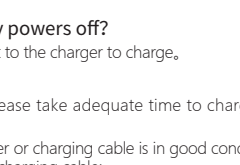
46. After searching, click "BT-CALL" to pair and wait for a successful pairing;



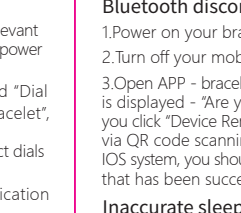
47. After the first successful connection, please click "pair" key, then press "enable" key to accomplish the connection.



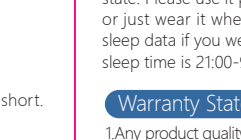
48. After searching, click "BT-CALL" to pair and wait for a successful pairing;



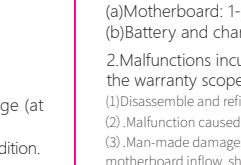
49. After searching, click "BT-CALL" to pair and wait for a successful pairing;



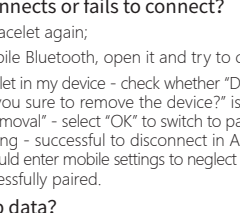
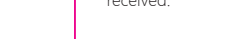
50. After the first successful connection, please click "pair" key, then press "enable" key to accomplish the connection.



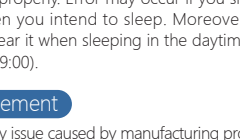
51. After searching, click "BT-CALL" to pair and wait for a successful pairing;



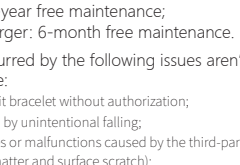
52. After searching, click "BT-CALL" to pair and wait for a successful pairing;



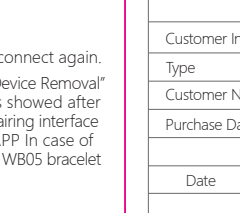
53. After the first successful connection, please click "pair" key, then press "enable" key to accomplish the connection.



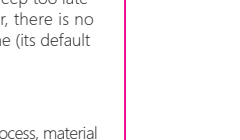
54. After searching, click "BT-CALL" to pair and wait for a successful pairing;



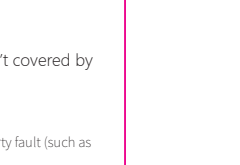
55. After searching, click "BT-CALL" to pair and wait for a successful pairing;



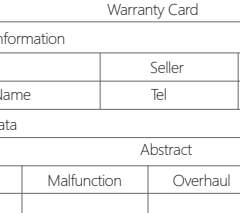
56. After the first successful connection, please click "pair" key, then press "enable" key to accomplish the connection.



57. After searching, click "BT-CALL" to pair and wait for a successful pairing;



58. After searching, click "BT-CALL" to pair and wait for a successful pairing;



59. After the first successful connection, please click "pair" key, then press "enable" key to accomplish the connection.



60. After searching, click "BT-CALL" to pair and wait for a successful pairing;



61. After searching, click "BT-CALL" to pair and wait for a successful pairing;



62. After the first successful connection, please click "pair" key, then press "enable" key to accomplish the connection.



63. After searching, click "BT-CALL" to pair and wait for a successful pairing;



64. After searching, click "BT-CALL" to pair and wait for a successful pairing;



This device complies with part 15 of the FCC Rules. Operation is subject to the following two conditions:

(1) This device may not cause harmful interference, and

(2) this device must accept any interference received, including interference that may cause undesired operation.

Any Changes or modifications not expressly approved by the party responsible for compliance could void the user's authority to operate the equipment.

Note: This equipment has been tested and found to comply with the limits for a Class B digital device, pursuant to part 15 of the FCC Rules. These limits are designed to provide reasonable protection against harmful interference in a residential installation. This equipment generates uses and can radiate radio frequency energy and, if not installed and used in accordance with the instructions, may cause harmful interference to radio communications. However, there is no guarantee that interference will not occur in a particular installation. If this equipment does cause harmful interference to radio or television reception, which can be determined by turning the equipment off and on, the user is encouraged to try to correct the interference by one or more of the following measures:

- Reorient or relocate the receiving antenna.

- Increase the separation between the equipment and receiver.

- Connect the equipment into an outlet on a circuit different from that to which the receiver is connected.

- Consult the dealer or an experienced radio/TV technician for help.

The device has been evaluated to meet general RF exposure requirement. The device can be used in portable exposure condition without restriction.