



INSTRUCTION MANUAL



HELMET BLUETOOTH
INTERCOM SYSTEM

G-Max

Table of Contents

1. Introduction	01
2. Features	01
3. Installation	02
3.1 Clip mount	02
3.2 Adhesive mount	02
4. Buttons	02
5. How to use	03
5.1 Power on/off	03
5.2 Factory reset	03
5.3 Switch modes	03
5.4 Adjust the volume	03
5.5 Connect to a phone	03
5.6 Flowing light	04
5.7 Phone calls	04
5.8 Music	04
5.9 Activate voice assistant	04
5.10 Group intercom mode	05
5.11 Two-rider intercom mode	06
5.12 FM radio	07
6. Function priority	07
7. Parameters	08
8. Precautions	08

1. Introduction

Thank you for choosing our motorcycle outdoor product. This product is a Bluetooth intercom system installed on motorcycle helmets. After being connected to phones, it allows you to listen to music/FM radio, make calls, and share music. What's more, the one-key multi-person intercom feature lets you keep in touch with your companions at any time, bringing better experiences for your riding journey.

2. Features



Stereo Music



USB C Fast
Charging Port



CVC Active Noise
Cancellation



2-6 Rider



Bluetooth 5.2



1,500mAh Battery



Cool Flowing Lights



Music Sharing



Dual Phone
Connection



2,000m Range



Smart Display



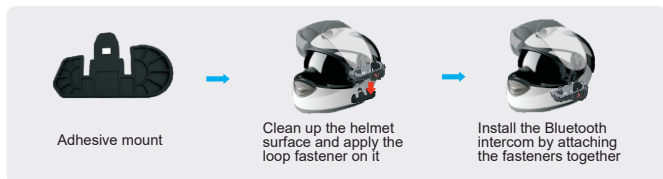
IP67 Waterproof

3. Installation

3.1 Installation using the clip mount



3.2 Installation using the adhesive mount (hook fastener and loop fastener)



4. Buttons



5. How to Use

5.1 Power on/off

5.1.1 Power on: In the power-off state, press and hold the Power button for 3 seconds, the blue indicator light will light up once, and the battery level and current mode will appear on the display.

5.1.2 Power off: In the power-on state, press and hold the Power button for 3 seconds, the red indicator light will light up once, and you will hear a 'Power off' voice prompt.

5.2 Factory reset

Reset to factory settings: In the power-on state, press and hold the Power button for 7 seconds (do not release even when the intercom turns off after holding the Power button for 3 seconds, hold for 4 more seconds) until you hear sound prompts, which indicates the Bluetooth connection history has been cleared and the factory reset is finished.



5.3 Switch modes

Mode adjustment: In the power-on state, press the Intercom button to switch between 4 modes: group intercom mode - third party intercom mode - music sharing mode - Bluetooth intercom mode.

Group intercom mode  Third party intercom mode 
Music sharing mode  Bluetooth intercom mode 

5.4 Adjust the volume

Press and hold the '-' button to decrease the volume and the '+' button to increase the volume (sound prompts when the volume reaches the highest).

5.5 Connect to a phone

5.5.1 In the power-off state, press and hold the Power button for 5 seconds, the blue light will light up once and you will hear a 'Bluetooth pairing' voice prompt.

5.5.2 In the power-on state, press the hold the Power button and the Multifunction button for 2 seconds, and you will hear a 'Bluetooth pairing' voice prompt.

5.6 Flowing light

5.6.1 In standby mode, press and hold the Multifunction button and the Intercom button to turn on the colorful lights, and hold the two buttons for 2 seconds to turn off the lights.

5.6.2 Pressing the Multifunction button and the Intercom button at the same time can realize the cycle of red flowing light, blue flowing light, green flowing light, always-on red light, always-on blue light, and always-on green light.

5.7 Phone calls

5.7.1 Answer calls: When there is an incoming call, press the Multifunction button to answer it.

5.7.2 Reject calls: When there is an incoming call, press and hold the Multifunction button for 1 second to reject the call.

5.7.3 Hang up calls: During a phone call, press the Multifunction button to hang up the call.

5.7.4 Last number redial: In standby mode, double-click the Power button to redial the last number.

5.7.5 Turn on auto answer: When the intercom is not connected to a phone via Bluetooth, press and hold the Multifunction button for 2 seconds until the display reads 'A-ANSWER ON'. Reboot the intercom to save the setting (valid after next boot).

5.7.6 Turn off auto answer: When the intercom is not connected to a phone, press and hold the Multifunction button for 2 seconds until the display reads 'A-ANSWER OFF'. Reboot the intercom to save the setting (valid after next boot).

5.8 Music

Play/pause: When the intercom is connected to the phone and the music player is turned on, press the Multifunction button to pause/play music.

Next/previous song: press the '-' button for the previous song and '+' button for the next song.

5.9 Activate voice assistant: When in standby, press and hold the Multifunction button for 2 seconds to wake up the voice assistant on your phone (your phone should feature a voice assistant, and the voice assistant must be turned on).

5.10 Group intercom mode

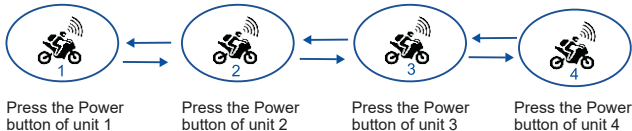
5.10.1 Pairing

Step 1: (Take 4 units as an example) After all units are turned on, press the Intercom buttons to switch all units to the 'Group intercom mode'.

Step 2: Press and hold the Intercom button of all units to enter intercom pairing state, and the displays read 'ICOM PAIRING'.

Step 3: Press the Intercom button of one of them (No. 1) to initiate a search. After searching for No. 2, No. 1 will display 'STANDBY'. No. 2 will display 'STANDBY' shortly and then "ICOM PAIRING" again to automatically search for No. 3. After No. 3 has been searched, No. 2 will display 'STANDBY' and No. 3 will display 'STANDBY' shortly and then 'ICOM PAIRING' to automatically search for No. 4. After No. 4 has been searched, No. 4 will display 'STANDBY' shortly and then 'ICOM PAIRING' to automatically search for the next unit (By now, all 4 units are connected successfully. The search will automatically stop after about 10 seconds, so the next step will not be affected).

Step 4: Press the Power button of each unit in turn. There will be a voice prompt, meaning that the group connection is ready. Then press the Power button of each unit in turn. You will hear two sounds indicating the group intercom mode is turned on. (If the group intercom mode is not turned on successfully, press the Power button again, wait for a few seconds until you hear the two sounds.)



5.10.2 Power-off memory: After entering multi-person intercom mode, if one of the units shut down and boot again, you need to press its Power button once. And you will hear 2 sounds indicating that unit has entered intercom mode again.

5.10.3 Disconnect/reconnect manually: During multi-person group intercom mode, press the Power button twice to disconnect the group intercom mode. Then you can press the Power button to enter the group intercom mode.

5.10.4 Voice broadcast of unit number: When in group intercom mode, press the Power button and Multifunction button at the same time, the unit will broadcast which unit it is.

5.10.5 Diagram of group intercom rules:

When No. 1, 2, 3 and 4 are in the group intercom mode

- ① If No. 2 disconnects or makes a call, No. 3 and 4 will resume the intercom mode after a 5-second disconnection. At this time, No. 1 cannot join the group intercom mode until No. 2 joins the intercom mode again;
- ② If No. 1 disconnects, No. 2, 3, and 4 can re-connect to intercom mode;
- ③ If No. 4 disconnects, No. 1, 2, and 3 can re-connect to intercom mode;
- ④ If No. 2 and 3 disconnect at the same time, the entire group intercom link is completely disconnected.

5.11 Two-rider intercom mode

5.11.1 Third party intercom mode

Step 1: Switch a 3rd party helmet intercom to pairing state. After turning on G-MAX, press the Intercom button to enter Bluetooth pairing mode.

Step 2: In 3rd party intercom pairing mode, press and hold the Intercom button of the G-MAX to enter searching state, and the display will read ICOM PAIRING. Then press the Intercom button to start pairing with third party intercoms. After the pairing is successful, you can directly start talking with others. (If you reboot the G-MAX, just press the Intercom button to start talk.)

5.11.2 Music sharing

Step 1: In the power-on state, press the Intercom buttons of the two units to enter Music sharing mode.

Step 2: In music sharing mode, press and hold the Intercom button of the two units to enter searching state, and the display will read ICOM PAIRING.

Step 3: Press the Intercom buttons of one of the devices (the sharer) for searching and pairing intercoms. After the pairing is successful, you can share music with other riders (the sharer needs to be connected to a phone in advance and music should be paused).

5.11.3 Bluetooth intercom mode

Step 1: In the power-on state, press the Intercom buttons of two G-MAX units to enter Bluetooth intercom mode.

Step 2: In Bluetooth intercom mode, press and hold the Intercom buttons of the two units to enter the search state, and the display reads ICOM PAIRING.

Step 3: Press the Intercom button of one of the units for searching and pairing intercom. After the pairing is successful, you can directly start talking with others. (If you reboot the G-MAX, just press the Intercom button to start talk.)

5.11.4 Power-off memory: for two units that have been paired for communication, you need to press the Intercom button to enter intercom mode after the unit reboots.

5.11.5 Manual disconnection/reconnection: when two intercoms are connected, press the Power button to disconnect and again to re connect them.

5.12 FM radio

5.12.1 Turn on/off FM radio: In the no audio state, press the FM button twice to start searching stations. Press the FM button twice again to exit FM radio.

5.12.2 Switch FM radio stations: press the - button for the next station and the + button for the previous station.

6. Function Priority

The G-MAX operates in the following order of priority:

Highest Phone calls

Group intercom, 2-rider intercom

Music from phones

Music sharing

Lowest FM radio

Note: Pair G-MAX units before pairing with phones.

7. Parameters

Bluetooth version: 5.2	Intercom range: up to 2,000 meters
Supported intercom rider: 2-6 riders	Protection grade: IP67 waterproof
Standby time: 600 hours	Noise cancellation: CVC 8.0
Working time: 50 hours at intercom mode	Music time: 60 hours
Speaker: 40mm in diameter, 32Ω	Battery capacity: 1,500 mAh
Charging time: about 2.5 hours	Charging port: USB Type C
Battery type: rechargeable lithium polymer battery	Power requirement: 5V=1A
Working temperature: 14~131 °F (-10~55 °C)	Storage temperature: -4~140 °F (-20~60 °C)

- The actual time may vary depending on the type of phones and usage status.
- The working distance will have some deviation due to the influence of environment and climate.

8. Precautions

8.1 The applicable storage temperature of this product is -20 degrees C to 60 degrees C. Do not store in an environment with too high or too low temperature, otherwise it will affect the service life of the product.

8.2 Do not expose this product to open flames to avoid explosions.

8.3 If you do not use this product for a long time, please store it in a dry place and charge the product regularly (once every three months) to ensure that the product can work normally.