

MAJORITY

PETERSFIELD

Digital & FM Pocket Radio

CB1A-DAB-BLK



Instructions Guide

Contents

Box Contents	1
Controls And Functions.....	2
Support	3
Instructions Guide	5
Basic Operation	5
DAB/DAB+ Radio Mode	7
Setting DAB Radio Preset Stations	8
DAB Station Information.....	9
FM Radio.....	10
Setting FM Radio Preset Stations.....	12
FM Station Information	13
Settings	14
Additional Features	15
Troubleshooting	16
Specifications	17
Warranty	17
Safety Information.....	18

**3 YEAR
WARRANTY**

Watch video tutorials and register
your product for a FREE 3-year warranty
at www.majorityradios.co.uk

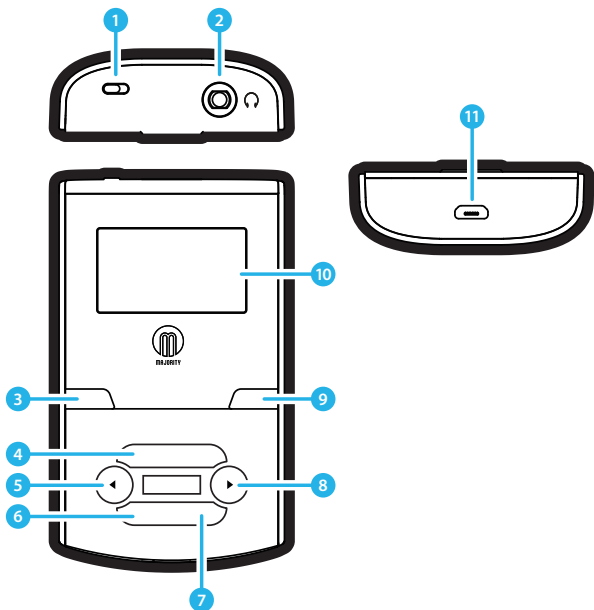
Box Contents

1. Majority Petersfield Pocket DAB
2. USB Cable
3. Earphones
4. User Guide



Controls And Functions

Control Buttons



- | | | |
|-------------------|---------------|--------------------|
| 1. Power (On/Off) | 5. Previous | 9. Menu/Info |
| 2. Earphone jack | 6. Volume - | 10. Display screen |
| 3. Standby/Mode | 7. Enter/Lock | 11. DC IN jack |
| 4. Volume + | 8. Next | |

Support

Thank you for your purchase of the Majority Petersfield.

Please follow the guidance of the manual to set up your new purchase and begin enjoying its features.

If you require further assistance with your new radio, please contact our support team on the Majority website:

<https://www.majorityradios.co.uk/support>

Controls And Functions

Navigation Controls

ON/OFF Button

Switch your radio ON or OFF by moving the switch on the top of the radio.

Standby/Mode

Press the 'Standby/Mode' button to put the radio out of standby.

To put the radio back into standby, press and **hold** the 'Standby/Mode' button.

When in working mode, switch between DAB and FM mode by pressing the Standby/Mode button.

Previous/Next

Use the Next and Previous buttons to navigate around the radio and browse through your selections and stations available.

In FM mode these buttons can be held down to autoscan to the next or previous available stations.

Menu/Info Button

Hold down the Menu/Info button to enter system settings.

Select repeatedly when on a DAB or FM station to view station information.

Enter/Lock button

Press the 'Enter' button when in working mode to lock and unlock the buttons.

Basic Operation

Please note all (Ref.) refer to the Controls and Functions mapping guide on Page 1.

Switch the 'ON/OFF' (**Ref.1**) button on top of the system to 'ON'. "Welcome to Digital Radio" will show on the display, followed by the clock time.

Ensure the system has been charged, the battery life will show on the display when you turn on. If the battery icon shows all of the bars illuminated then the system is fully charged.

To charge the device, use the USB cable provided and plug it into a computer or a plug (not supplied) that accepts USB connectors.

Press the 'Standby/Mode' button to turn on the unit (**Ref.3**). The system should go straight to DAB Radio and automatically start scanning for stations. The display will show "Searching" and can take a few minutes to scan.

Press the 'Standby/Mode' button (**Ref.3**) to switch to FM or again to switch back to DAB.

Ensure that the earphones are connected into the top of the system correctly (**Ref.2**) as they are also the antenna of your radio. Without them, no DAB/FM signal will be received.

Use the Vol -/Vol + buttons to control the volume of the radio.

Standby

To change the radio back into standby, press and **hold** the 'Standby/Mode' button (**Ref.3**). To turn off fully, switch the button on top of the unit (**Ref.1**) to Off.

DAB/DAB+ Radio Mode

Press the 'Standby/Mode' button (**Ref.3**). On first use DAB Radio will automatically start scanning all stations and save them.

To auto scan (if the unit hasn't automatically done so, or shows no signal) press and **hold** the 'Info/Menu' button (**Ref.9**) and when the display shows "FULL SCAN", press the 'Enter' button (**Ref.7**).

The unit will start scanning up the frequency band and store all stations that have a good signal. Please note: if you are not in a good DAB signal area then you won't get a strong signal, if any.

The radio will automatically save all those stations that have a strong signal. After searching has finished it will automatically play the first station stored.

To listen to any of the stations that have been stored, use the 'Next' (**Ref.8**) and 'Prev' (**Ref.5**) buttons to navigate through the stations.

The radio will display station information when you press the 'Info/Menu' button (**Ref.9**). Press multiple times to view all information available (See page 11).

When you turn the radio on again after switching it off, it will automatically tune to the same station (DAB or FM) that was last selected.

Setting DAB Radio Preset Stations

How to preset a radio station

Up to 10 preset stations can be set. To store a station that you are currently playing:

Press and **hold** 'Enter' button (**Ref.7**).

"Preset Empty '1'" will show on the display, the number flashing.

Press 'Prev' (**Ref.5**) or 'Next' (**Ref.8**) button to change the '1' to the number you want to store the station as.

Then press and **hold** 'Enter' button (**Ref.7**) to save.

The display will then show "Preset (1) stored".

To set more preset stations, repeat the above process but use the 'Previous' or 'Next' buttons (**Ref.5/8**) to browse to the number you want to store the station as.

How to play a preset radio station

Press and **hold** 'Enter' (**Ref.7**).

Press 'Prev' (**Ref.5**) or 'Next' (**Ref.8**) button to scroll through your preset stations.

Press 'Enter' button (**Ref.7**) to select the preset station you wish to play.

DAB Station Information

When listening to a DAB station, you can access station information. To do this, press the 'Info/Menu' button (**Ref.9**) repeatedly to show the programme information.

Bit Rate: Shows the data rate at which the signal is being transmitted.

Bit Error Rate (BER): Provides details of the signal error rate.

Channel and Frequency: Displays the station's transmission channel number and frequency.

PTY (Programme Type): Shows the type and description of the programme provided by the DAB station.

Time and Date: Displays the time and date information provided by the broadcaster.

DAB indication: Indicates DAB mode.

Dynamic Label Segment (DLS): Displays scrolling text information supplied by the broadcaster.

FM Radio

Press the 'Standby/Mode' button (**Ref.3**) to switch on from standby.

Follow by pressing the 'Standby/Mode' button (**Ref.3**) to switch to FM mode. The first time you go on FM mode, the FM frequency "87.5 MHz" will be displayed on the screen.

To auto scan to the next available station, press and **hold** the 'Previous' button (**Ref.5**) and then release.

After searching has finished the unit will automatically play the first station stored with a good signal.

How to tune a specific frequency manually

To listen to a specific frequency, you can search quickly by pressing and **holding** the 'Next' button (**Ref.8**) to search up and 'Prev' button (**Ref.5**) to search down the bandwidth. It will stop searching when you press the button again.

To search slowly, press the 'Next' (**Ref.8**) and 'Prev' (**Ref.5**) button multiple times instead of holding.

Mono and Auto

In working mode press and **hold** the 'Info/Menu' button (**Ref.9**). Use the 'Prev' button (**Ref.5**) to highlight your selection.

Choose "SET TO MONO/SET TO AUTO" and press the 'Enter' button (**Ref.7**).

The display will show "Audio Mode: Mono/Auto".

The default audio setting for all stations is stereo mode. If you want to improve the quality use the above instructions to change it to Mono mode.

Setting FM Radio Preset Stations

How to preset a radio station

Up to 10 preset stations can be set. To store a station that you are currently playing:

Press and **hold** the 'Enter' button (**Ref.7**) until "Preset Empty '1'" will show on the display, the number flashing.

Press the 'Prev' (**Ref.5**) or 'Next' (**Ref.8**) button to change the "1" to the number you want to store the station as. Then press and **hold** the 'Enter' button (**Ref.7**) to save.

The display will then show "Preset (1) stored".

To set more preset stations, repeat the above process but use the 'Previous' or 'Next' buttons (**Ref.5/8**) to browse to the number you want to store the station as.

How to play a preset radio station

Press and **hold** the 'Enter' button (**Ref.7**).

Press 'Prev' (**Ref.5**) or 'Next' (**Ref.8**) button to scroll through your preset stations that have been set.

Press the 'Enter' button (**Ref.7**) to select the preset station you wish to play.

FM Station Information

When listening to an FM station, you can access station information. To do this, press the 'Info/Menu' button (**Ref.9**) repeatedly to show the programme information.

Signal Strength: Displays a signal bar with the strength of the current station.

Time and Date: Displays the time and the date.

Frequency: Displays the station's transmission frequency.

Audio Type: Displays the audio type of the station you are listening to. It will either be Stereo or Mono.

Radio Text: Displays scrolling text information supplied by the broadcaster.

Programme Type: Displays a description of the type of programme provided by the broadcaster.

Settings

Time and Date

On first use of DAB Radio, the time and date will automatically update once put into DAB mode.

System Reset

Press and **hold** the 'Info/Menu' button (**Ref.9**) to enter radio settings. Use the 'Prev' or 'Next' button (**Ref.5/8**) to scroll to the "SYSTEM RESET" option. Press the 'Enter' button to select (**Ref.7**).

To confirm the factory reset, the display will show "Press Enter Key to Reset". Press 'Enter' button to confirm (**Ref.7**).

SW Version – Software Version Display

Press and **hold** the 'Info/ Menu' button (**Ref.9**) to open the radio settings. Use the 'Prev' button (**Ref.5**) to scroll through to 'Software Version' and press Enter to confirm (**Ref.7**). The radio will now show software version 'SW Ver. V1.02'.

Display

When listening to a DAB or FM station, press the 'Info/Menu' button (**Ref.9**) repeatedly to display station information such as: RDS radio text; Programme type; Station name; Mono/Stereo; Time and Date.

Additional Features

Charging the Radio

Connect the small end of the USB cable (supplied) into the charging port at the bottom of the radio (**Ref.11**). Then connect the other end of the USB cable into a free USB port on your computer or another mains charger (not supplied).

Your radio includes an internal re-chargeable battery. The battery level is shown on the display, and is advised to fully charge the battery before removing from charge.

The radio should be recharged at first opportunity once the battery level is at minimum charge.

From low, the battery can take up to two hours for a full charge - please refer to the charging icon on the display screen. Once charged, the radio will have 10-12 hours of battery portability.

The radio has a built-in rechargeable lithium battery. Voltage DC5V, current 500mA.

Lock/Unlock function

Press the 'Enter' button to lock the keys, and press 'Enter' again to unlock the keys.

Troubleshooting

Malfunction	Possible causes/measures
No power / function	Check that the radio is charging and use when fully charged. Ensure radio is switched on by holding down the ON/OFF button.
No sound	Check whether unit is set to MUTE or not. A station may not be tuned in. Do a rescan of the DAB or FM mode and ensure that you are in an area with good signal.
Device not working	Perform a reset of the radio and try rescanning for DAB and FM stations.
Trouble receiving stations	Please ensure that your earphones are plugged in and extended as these act as the antenna. Perform a rescan for available stations.

Specifications

USB Charger Wire	5V 0.5A
Lithium battery	3.7V/1000mAh
Frequency Range	DAB: Band III 5A-13F FM: 87.5MHz to 108 MHz
Earphone output power	2 mW (32Ω)
Battery portability	9-12 hours from a full charge and dependent on DAB or FM mode.
Dimensions	9.5 x 5.5 x 1.5 cm ; 99.8 g

Warranty

All products come with a standard 12 month warranty. All items must be registered on www.majorityradios.co.uk for the warranty to be valid. Once on the web page, use the menu to find “register your product”. You will also be given the chance to extend your warranty for an additional 24 months, free of charge.

Safety Information

1. Read these instructions.

- Keep these instructions. Instructions are also available for download at www.majorityradios.co.uk
- Heed all Warnings
- Follow all instructions
- Do not clean the apparatus near or with water
- Do not block any ventilation openings. Install in accordance with the manufacturer's instructions
- Do not block any ventilation openings. Install in accordance with the manufacturer's instructions.
- Do not install near any heat sources such as radiators, heat registers, stoves, or other apparatus (including amplifiers) that produce heat.
- Protect the power from being walked on or pinched particularly at plugs, convenience receptacles, and the point where they exit from the apparatus.
- Only use attachments/accessories specified by the manufacturer.
- Unplug this apparatus during light storms or when unused for long periods of time.
- Refer all servicing to qualified service personnel. Servicing is required when the apparatus has been damaged in a way, such as power-supply cord or plug is damaged, liquid has been spilled or objects have fallen into the apparatus, the apparatus has been exposed to the rain or moisture, does not operate normally or has been dropped.
- No naked flame sources, such as lit candles, should be placed on the apparatus.
- Dispose of used electrical products and batteries safely according to your local authority and regulations.

ADDITIONAL WARNINGS

The apparatus shall not be exposed to dripping or splashing and no objects filled with liquid, such as vases, shall be placed on the apparatus.

Main plug is used to disconnect device and it should remain readily operable during intended use. In order to disconnect the apparatus from the main mains completely, the mains plug should be disconnected from the main socket outlet completely.

Battery shall not be exposed to excessive heat such as sunshine, fire or the like.

RECYCLING ELECTRICAL PRODUCTS

You should now recycle your waste electrical goods and in doing so help the environment.



This symbol means an electrical product should not be disposed of with normal household waste.

Please ensure it is taken to a suitable facility for disposal when finished with.

IMPORTANT: Please read all instructions carefully before use and keep for future reference.



Risk of electric shock.
Do not open



Read all instructions carefully before use and keep for future reference



When servicing, use only identical replacement parts



CAUTION

RISK OF ELECTRIC SHOCK
DO NOT OPEN



ATTENTION

RISQUE D'ELECTROCUTION
NE PAS OUVRIR



IMPORTANT: Please read all instructions carefully before use and keep for future reference

MAJORITY

www.majorityradios.co.uk

MAJORITY

PETERSFIELD

Digital Pocket Radio

CB1A-DAB-BLK



Instructions guide ist in deutscher Sprache auf
unserer website verfügbar: www.majorityradios.de

Bedienungsanleitung