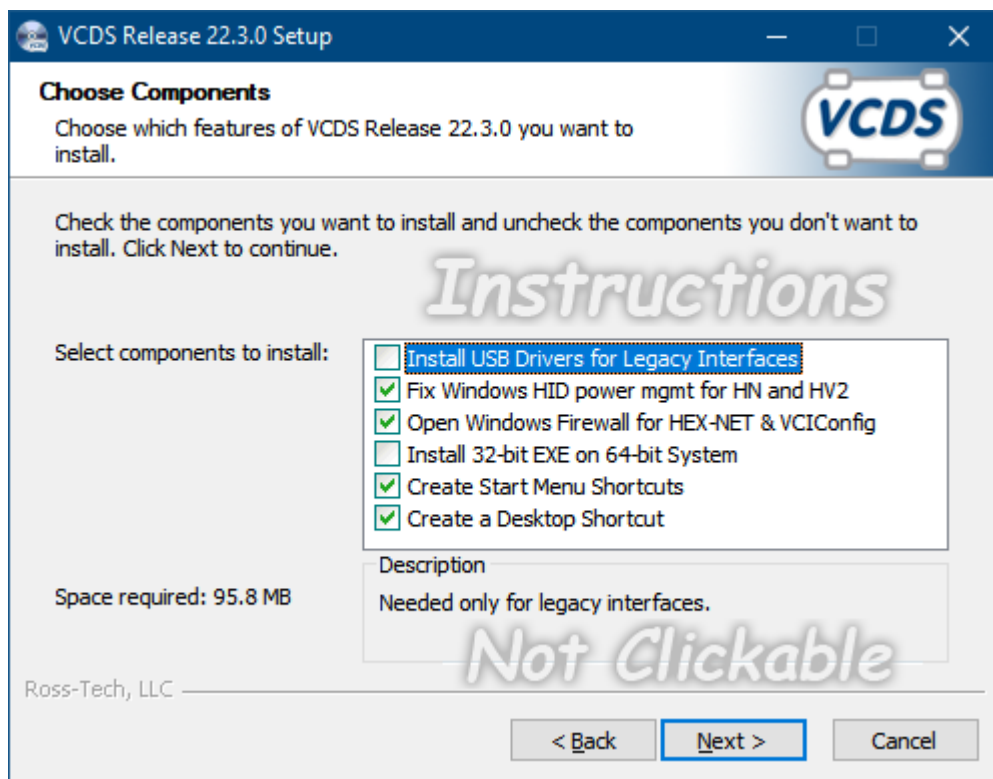




**PLEASE NOTE:** All model-year 2019 and newer cars require one of our [current interfaces](#). Although this Release of VCDS still supports every interface Ross-Tech has sold since 2004, none of our [legacy interfaces](#) such as the HEX+CAN and Micro-CAN will work properly with 2019 model cars. If you intend to work with 2019 or newer cars and do not yet have a current interface, please contact your [distributor](#) or see [this page](#) for upgrade options.

## Installation Instructions for VCDS® Release 22.3+



**Most users who are installing VCDS do not need to change anything on this screen and can simply click the “Next” button.** However, to avoid countless phone calls and e-mails asking what these options do, we present this guide:

**Install USB Drivers for Legacy Interfaces:** is needed only you’re using any of our older interfaces such as a HEX+CAN, in which case you must manually select it. This option cannot be selected on systems with an ARM-architecture CPU because there are no legacy interface drivers available for those systems.

**Fix Window HID power management:** is only available if the installer is run on Windows 8.1 or Window 10, where it is selected by default. It is required for the HEX-NET and HEX-V2 interface to communicate reliably via USB on systems running Windows 8.1 or 10.

**Open Window Firewall for HEX-NET & VCIconfig:** is useful if you will be using either of our current-generation interfaces (HEX-NET or HEX-V2). This option is selected by default will attempt to allow VCDS and VCIconfig to establish outgoing connections from your PC, which are necessary to locate HEX-NET(s) on your network and for firmware updates from our server.

**Install 32-bit EXE on 64-bit Systems:** can only be selected if your PC is running a 64-bit Windows. The vast majority of users with 64-bit Windows do not need this option and should use the 64-bit EXE files which are installed by default on those systems. However our 64-bit EXE may not work properly on a small percentage of 64-bit systems, and this option gives those users an immediate work-around.

**Create Start Menu Shortcuts:** is selected by default and will put the usual entries in your Start Menu. However, if you don't want to clutter up your Start Menu, you can de-select this.

**Create a Desktop Shortcut:** is selected by default and will put the usual shortcut on your desktop. However, if you don't want to clutter up your Desktop, you can de-select this.