

HATHASPACE

Smart True HEPA
Air Purifier

User Guide

Model HSP001

CONTENTS

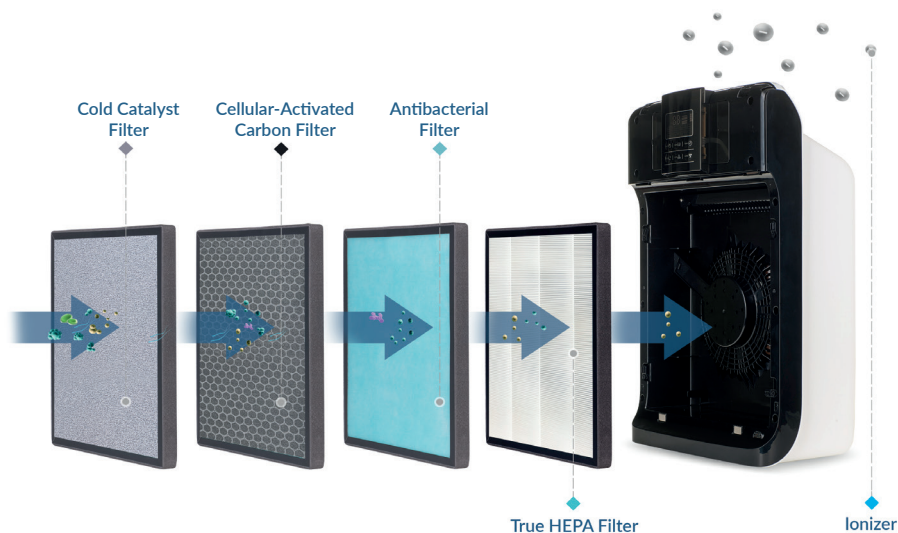
Specifications	1
Features	1
Product Diagram	3
Smart Air Quality Sensor	4
Filter Installation	5
Filter Maintenance	6
Operation	7
Precautions	9
Troubleshooting	11

SPECIFICATIONS

Product Name	Smart True HEPA Air Purifier
Rated Voltage	120V Please refer to the nameplate on the back of machine.
Rated Frequency	60HZ
Rated Power	45W
Room Coverage	Replaces the air 2x per hour in 350 Sq Ft Replaces the air 1x per hour in 700 Sq Ft
CADR	160 m ³ /hr

FEATURES

5-in-1 Purification System



■ Cold Catalyst Filter

First, a Cold Catalyst Filter targets and removes large particles including but not limited to dust mites, pet hair, skin cells, and mold spores. Additionally, it assists in the decomposition of formaldehyde, ammonia, benzene, and TVOC's.

■ Activated Carbon Filter

High Grade Active Carbon absorbs smoke, odors, gases, and volatile organic compounds (VOC's). We don't skimp on the carbon. Every filter contains over 300 grams of high grade active carbon, meaning more absorption, and a longer useful life of the filter.

■ Antibacterial Filter

Nano-materials in the antibacterial filter target bacteria and germs.

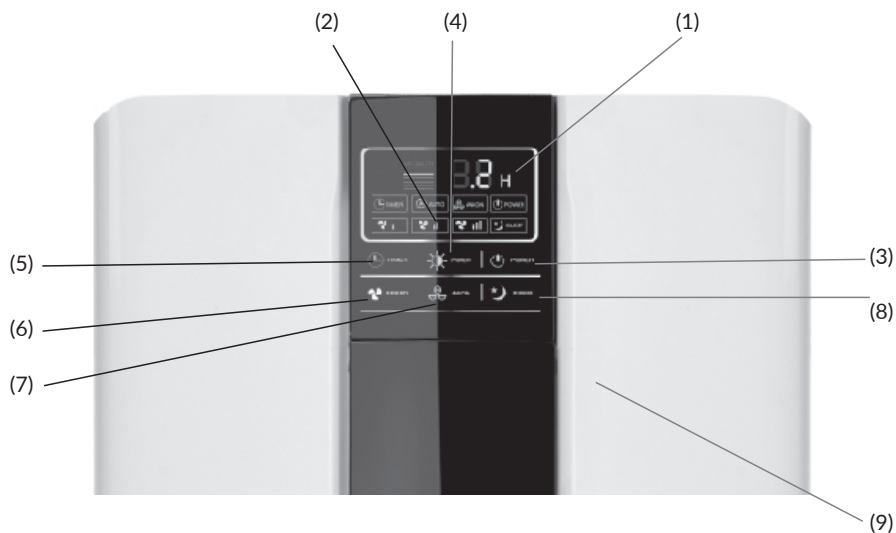
■ True HEPA Filter

Hathaspace HEPA material is the trusted standard in high efficiency particulate air purification. 99.97% of airborne particles as small as 0.3 microns are eliminated from air passing through. These include but are not limited to dust mites, pollen, mold spores, pet dander, pet hair, and much more.

■ Ionizer/Anion Generation

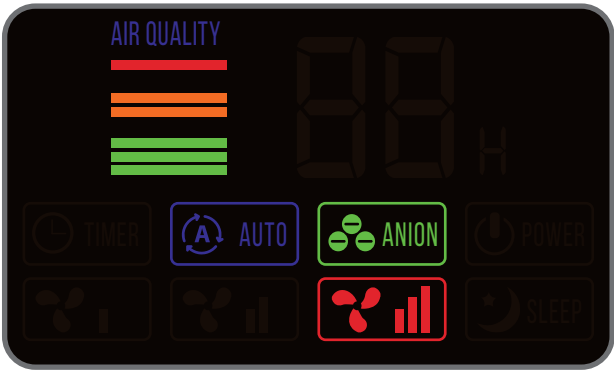
Hathaspace's California Air Resources Board (CARB) approved anion feature uses voltage to electrically charge air molecules and can be turned on or off anytime. When on, negative ions are released, which are particles with one or more extra electron. This eliminates odors, smoke, and gases in the air. It also makes smaller particles easier to capture within the physical filters.

PRODUCT DIAGRAM



(1)	Display	(7)	Ionizer
(2)	Control Panel	(8)	Sleep Mode
(3)	Power	(9)	Front plate
(4)	Light	(10)	Air Inflow
(5)	Timer	(11)	Handle
(6)	Fan Speed	(12)	Air Outflow

SMART AIR QUALITY SENSOR



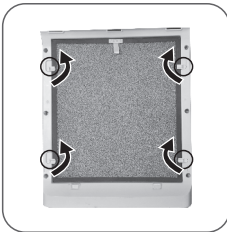
The Smart Air Quality Sensor detects particles and odors in real time, feeding that info to the purifier so it can adjust. This keeps your air quality consistently clean, while reducing power consumption and your electric bill.

Color	 Air Quality	 Fan Speed
Green	Good	Low
Yellow	Moderate	Medium
Red	Bad	High

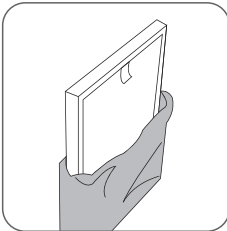
FILTER INSTALLATION



Pull the front plate toward you from its base and its magnets will release the bottom of the front cover. Then lift upward on the front plate to remove it completely, exposing the filter.



Turn buckles and remove filter gently by pulling outward.

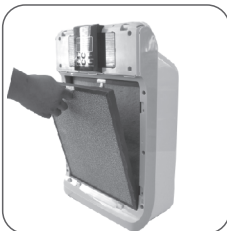


Remove packaging film from filters before use.



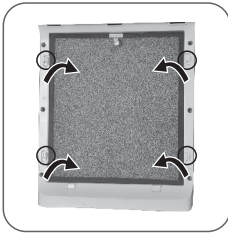
Place Filter 2 (Antibacterial and HEPA Filter) back into the unit.

Note: ensure tab is facing you.

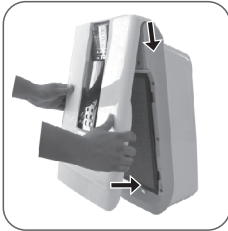


Place filter 1 (Cold Catalyst Filter) back into the unit.

Note: ensure tab is facing you.



Make sure filters are installed correctly, with tabs facing you. Lock filters in place by turning the buckles to secure them.



Reinstall the front plate by first placing the top of the front plate into the notches on the top of the purifier. Next, let the bottom magnets connect. Make sure the front plate is secure before powering on.

FILTER MAINTENANCE

Note: To ensure your warranty remains active and to avoid shortening the life of your air purifier, use only certified Hathaspace filters.

Guidelines:

- Replace filters every 4 months for optimal performance.
- Do not clean the filters with water or other liquids. Use a keyboard duster to gently remove any physical debris such as lint and hair.

Purchasing Additional Air Filters

Hathaspace Direct

<https://hathaspace.com/collections/filters>

OR

Scan below using your phone's camera.



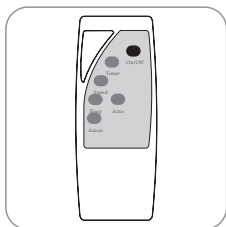
Amazon

<https://amazon.com/hathaspace>

OR

Scan below using your phone's camera.





Your included remote gives full control of your purifier from across the room and is powered by 2 AAA batteries (not included).



Plug in the purifier. The red power indicator will light up. Use the Power button on the unit or remote to turn on/off. The purifier will start in AUTO mode and the smart sensor will automatically initiate when the unit is turned on. The unit will adjust the fan speed automatically, beginning in high for a few minutes and moving down as needed.

Note: When restarting the air purifier in AUTO mode, the unit will always start back in high mode and slowly adjust down to make sure the air is clean. Once in low mode, it will adjust in real time according to your air environment.



The timer allows you to set your purifier to turn off after a set amount of time. You can choose up to 12 hours, or not use it at all and let the purifier run continuously. The time interval is displayed on the unit. It will turn off once the timer runs out.



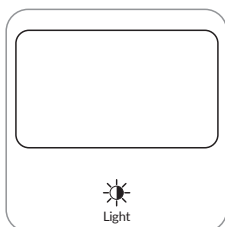
Press the Speed button on the unit or remote to adjust the fan speed. A faster speed increases the airflow through the unit, thus purifying your air faster. Choose from Low (Green), Medium (Orange), High (Red), and AUTO mode. In AUTO mode, the fan speed will automatically adjust based on the air quality in the room.



Press the Sleep button on the unit or remote to put the purifier in sleep mode. In sleep mode, the unit will run at a whisper-quiet speed with the lights off, and the smart sensor will turn off. If you would like to have the lights off while operating in other fan modes, then just press the Light button in your preferred mode and the lights will shut off. Press any of the buttons to exit sleep mode.



Press the Anion button on the unit or remote to turn on the ionizer. The Anion light will turn green on the display when the ionizer is on.



Press the Light button on the unit or remote to turn on/off the lights on the display. You can turn the lights off in any of the fan modes (Low, Medium, High, or AUTO), giving you more control over your purifier. If you power off the unit, the unit will always restart with the lights back on.

Before use, read entire manual thoroughly and keep it for future reference.

Hazardous

To avoid electric shock or fire, ensure that the product is dry at all times and keep the product away from water or any other liquid.

Warning

1. Make sure the local power supply voltage is the same as indicated on the nameplate on the back of machine.
2. If the power cord is damaged, do not plug in or turn on the purifier. Email team@hathaspace.com.
3. Do not block the air inlet or outlet with any objects.
4. For safety, do not allow children to handle the purifier unsupervised.
5. Keep the filters away from high temperatures or sparks/flames.
6. To reduce the risk of electric shock, this equipment has a polarized plug (one blade is wider than the other). This plug will fit in a polarized outlet only one way. If the plug does not fit fully in the outlet, reverse the plug. If it still does not fit, contact qualified personnel to install the proper outlet. Do not alter the plug in any way.

Notice

1. Do not use the purifier as a chemical ventilator, dust cleaner, or cooker ventilation hood.
2. Ensure your power outlet is functioning properly.
3. Place the purifier on a dry, stable, and flat surface.
4. Keep 8 inches of space on either side of the purifier while in operation, to allow proper airflow through the unit. Leave 12 inches of space above the top of the air purifier. Containing the purifier in a small space will restrict airflow and efficiency of the unit.

6. Do not place the purifier under an air conditioning unit, or any place where water may drip onto it.
7. Do not drop or hit the product, handle it gently.
8. Do not operate this product while using flammable gas sprays such as insect repellent, and common household cleaning chemicals.
9. Do not use this product near gas appliances, heating devices, or near a stove.
10. Unplug the power cord when cleaning or changing filters.
11. Do not operate the purifier in a space where temperature changes are drastic. This will cause condensation to form in the unit and ruin electrical components.
12. This product is intended for household use under normal operating conditions.
13. Do not use this product in a space with high humidity, such as a bathroom with the shower on, sauna, or steam room.

Smart Air Quality Sensor System memory reset instructions:

If the air quality indicator displays red color and the machine is cut off suddenly, you may have to reset the memory. Otherwise, the red color display will remain.


1. Unplug the machine and wait for 15-20 seconds. Plug again and start the machine.
2. Keep the machine running for 1 minute. The air quality indicator should begin functioning normally again.
3. Please perform the reset steps above in a clean environment without air pollution. Otherwise, the air quality display lights will be disrupted.

TROUBLESHOOTING

Problem	Solution
No air comes out from the outlet	Check if purifier is on using the red power indicator on the display. Test outlet.
Decreased Airflow	The filters are dirty and they need to be cleaned or replaced.
	The filter packaging bag is not removed. Please remove the filter packaging bag.
Air quality has not improved after running the purifier	Make sure the filters are installed in the proper order and positioned correctly in the unit.
	Filters are worn out, please replace all the filters.
When to replace the filters	When the surface of the first filter is dirty and fades in color, it has collected many particles, and will perform better if replaced with a clean filter. Typical operating conditions require changing the filter every 4 months .
	Change the filter when the HEPA filter becomes discolored, or every 4 months .
	The filter replacement period is dependent on the air it filters, time used, and amount of particles collected. For optimal air purification, it is best to replace the filters every 4 months .
	If you notice a chemical/burning like smell after using the unit for a while, this can be from the active carbon being overly saturated with gas. It is time to replace the filters."

HATHASPACE

In harmony.

www.hathaspace.com
team@hathaspace.com
1-800-446-0535
 @Hathaspace