

Polaroid



8" Wi-Fi Digital Picture Frame User Manual

PDWX-800CD



Get our help line
1-800-244-4241



Or visit us at
www.mypolaroid.com
or
www.polaroid.com

Polaroid is a registered trademark of Polaroid Corporation. All other trademarks are the property of their respective owners. Polaroid is a registered trademark of Polaroid Corporation. All other trademarks are the property of their respective owners. Polaroid is a registered trademark of Polaroid Corporation. All other trademarks are the property of their respective owners.

© 2015 All Rights Reserved.
Made in China.
Distributed by: The Polaroid Company, Waltham, MA 01901.

Download the App
Polaroid Wi-Fi Photo Frame 3.0



Available on the App Store or Google Play
for your Android/iOS smartphones and iPad

Congratulations on purchasing your new Wi-Fi Digital Photo Frame. With this Wi-Fi Digital Photo Frame, you can easily and quickly receive photos/videos directly from your Android/iOS smartphones and iPad through the included (Free downloadable) App. You can also view photos, videos or listen to music directly from an external memory card or USB Flash Drive. The Wi-Fi Digital Photo Frame is compatible with the following memory cards and flash drive (not included): Secure Digital (SD) card, Secure Digital High Capacity (SDHC), SDXC (64GB only), microSD (adapter required but not included) and USB Flash Drives.

TABLE OF CONTENTS:

| | |
|--|----|
| PRODUCT SPECS / SYSTEM REQUIREMENTS | 5 |
| WHAT'S IN THE BOX? / PARTS | 6 |
| PRODUCT FEATURES / IMPORTANT SAFETY PRECAUTIONS | 7 |
| SAFETY INSTRUCTIONS | 8 |
| CARE AND MAINTENANCE | 9 |
| WALL MOUNTING | 10 |
| CONNECTING A USB DRIVE / INSERTING A MEMORY CARD | 10 |
| SETUP AND INSTALLATION | 12 |
| Wi-Fi SETUP | 12 |
| APP SETUP (CONNECTING YOUR MOBILE DEVICE) | 14 |
| SENDING PHOTOS & VIDEOS | 17 |
| SENDING PHOTOS TO THE Wi-Fi PHOTO FRAME | 17 |
| TAKING PHOTOS FROM THE APP | 20 |
| ADDING PHOTOS FROM YOUR DEVICE'S ALBUM | 21 |
| PREVIEWING AND ADJUSTING PHOTOS | 24 |
| ADDING COMMENTS (CAPTIONS) TO YOUR PHOTOS | 26 |
| VIEWING YOUR SENT HISTORY | 27 |
| SENDING VIDEOS TO THE Wi-Fi PHOTO FRAME | 28 |
| PREVIEWING AND ADJUSTING VIDEOS | 29 |
| SENDING PHOTOS DIRECTLY FROM A PHOTO ALBUM | 32 |
| SENDING PHOTOS DIRECTLY FROM GOOGLE PHOTOS | 34 |
| SENDING PHOTOS DIRECTLY FROM EMAIL | 35 |

| | |
|--|----|
| VIEWING PHOTOS & VIDEOS | 37 |
| RECEIVING PHOTOS AND VIDEOS ON THE FRAME | 37 |
| VIEW PHOTOS IN THE PHOTO ALBUM | 38 |
| VIEW VIDEOS IN THE VIDEO ALBUM | 40 |
| SETTINGS/OPTIONS | 41 |
| SLIDESHOW | 42 |
| STORAGE PATH | 43 |
| MUSIC | 43 |
| NEW PHOTO ALERT | 43 |
| SLEEP MODE | 43 |
| DATE & TIME | 43 |
| DISPLAY MODE | 43 |
| MANAGE USERS | 44 |
| COMMENTS | 44 |
| DEVICE INFORMATION | 44 |
| TIPS FOR THE FRAME | 44 |
| POWER BUTTON | 44 |
| DELETING FILES FROM YOUR FRAME | 44 |
| FORGET WI-FI NETWORKS | 45 |
| CHOOSE MEMORY SOURCE FOR PHOTOS | 45 |
| EXPORTING AND IMPORTING PHOTOS | 45 |
| CLEARING "NEW" NOTIFICATION FROM YOUR PHOTOS | 46 |
| REMOVING AND BLOCKING LINKED DEVICES FROM YOUR FRAME | 46 |
| VIEWING COMMENTS AND INFORMATION ON YOUR PHOTOS | 47 |
| WEATHER | 47 |
| KEEP YOUR FRAME UP-TO-DATE | 48 |
| TIPS FOR THE APP | 49 |
| PERSONALIZING FRAME NAMES | 49 |
| UNLINK A LINKED FRAME | 49 |
| SENDING IMAGES TO MULTIPLE FRAMES | 49 |
| NAMING YOUR ANDROID / IOS SMART PHONES AND IPAD | 49 |
| SNAP CHAT - HOW TO SAVE PHOTOS AND VIDEOS | 50 |
| FCC STATEMENT | 51 |
| PRODUCT WARRANTY | 52 |

PRODUCT SPECS:

- FCC ID: VAC-PDWX08
- Wi-Fi: WLAN built-in Wi-Fi module; supports IEEE 802.11 b/g/n
- Photo file format: JPG/JPEG, BMP, PNG
- Video file format: MP4, MOV, MKV
- Audio file format: FLAC, AAC, MP3, OGG, WAV
- File sharing: send up to 9 photos or 9 (15-second) videos at a time
- I/O interface: 1-USB 2.0 port, 1-SD port
- Power: adaptor input (100-240v, 50/60Hz); adaptor output (DC power output; 5V/2A)
- Screen: touchscreen functionality & intuitive UX design
- Storage: 8GB of internal memory
- Operating temp: 0°C to 40°C; storage temp: -10°F to 60°F
- Operating humidity: 10-90% (non-condensing)
- Resolution: 1024x768 (182 PPI)
- Supported external memory: SD, SDHC, SDXC (64GB only), microSD (adapter required but not included) and USB flash drive

SYSTEM REQUIREMENTS

- Wi-Fi router with a 2.4GHz internet connection
- Android mobile device with OS 4.0 or higher, or Apple mobile device with iOS 8 or higher

NOTE: These products are NOT compatible with Linux or Windows phones or PCs

WHAT'S IN THE BOX?



8in Wi-Fi touchscreen
photo frame



Power adapter



Detachable
Frame Stand
and Knob

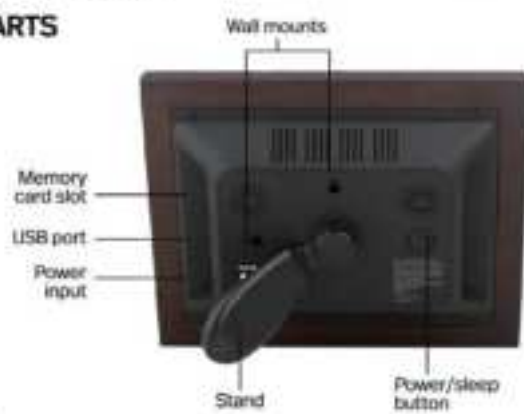


User manual /
warranty



Quick start
guide

PARTS

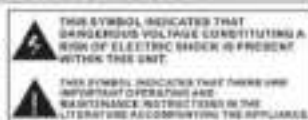
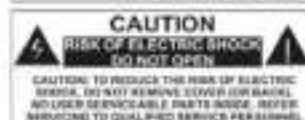


PRODUCT FEATURES

- Hi-resolution IPS touchscreen
- Decorative frame
- Wi-Fi-enabled internet photo/video frame
- Wi-Fi internet connected photo/video frame allows you to receive pictures and 15-second videos from Android/iOS smart phones & iPad
- Get notified when new pictures and videos arrive
- Pair multiple phones/devices (Android/iOS) to one frame or one phone/device to multiple frames
- Programmable sleep mode turns display on/off automatically
- Photos and videos can be stored on 8GB of internal memory
- Expandable external memory optional via SD card/USB flash drive (not included)
- Customizable slideshow transition effects and optional photo blur feature
- Add comments (captions) to your photos
- Watch fun Snapchat photos and videos
- Play royalty free videos & movies via SD card/USB
- Listen to imported music with (or without) photo slideshow
- Clock and real-time weather display
- Compatible with Google Photos and many Snapchat video filters

IMPORTANT SAFETY PRECAUTIONS

WARNING: TO REDUCE THE RISK OF FIRE OR ELECTRIC SHOCK, DO NOT EXPOSE THIS APPLIANCE TO RAIN OR MOISTURE.



- High voltage inside. Do not open the casing of the digital photo frame. Refer servicing to qualified personnel only.
- To reduce the risk of fire or electric shock, do not expose this product to rain or moisture.
- To avoid permanent loss of data, do not insert or remove memory cards or USB device when the power is on.

SAFETY INSTRUCTIONS

- Do not expose the product to dripping or splashing liquids or objects filled with liquids, such as vases. Use in a dry location only.
- Keep product away from open flames, such as candles.
- Keep the digital photo frame clean and never store it near a heat source or in dirty, humid or wet places. Keep it out of direct sunlight.
- Touch the touchscreen gently. Pressing the screen too hard can damage the digital photo frame.
- Do not use the product in an extremely dry environment as this can lead to static discharge, which can damage the digital photo frame.
- Do not subject the product to harsh impacts. Do not drop the product. These may result in damage to the product and loss of data.
- Do not attempt to repair or disassemble the unit yourself. Only qualified service personnel should perform repairs.
- The digital photo frame is for indoor use only.
- Use only the DC 5V (2A) power adapter supplied with this product. Do not unplug the adapter without first powering off the frame.
- Do not block the ventilation holes on the back of the digital photo frame.
- Children should be supervised to ensure that they do not play with the product.
- To prevent overheating and damage to the screen, unplug the product when you do not intend to use it for a long period of time.
- Please insert the plug into the DC IN jack on the unit completely before connecting the AC adapter to an electrical outlet.
- This product can only display files with the listed/specified compatible formats.

- Do not use the product in temperatures over 105° F (40° C).
- Do not allow metallic objects to touch the DC plug when the player is on.

CARE AND MAINTENANCE

- Always turn off the unit and remove the power adaptor from the electrical outlet before cleaning the unit.
- Use a soft dry cloth to clean this product.
- Never spray or pour liquids directly onto the screen or casing.
- Do not use abrasive materials or chemical cleaners such as alcohol, benzene, etc. Do not allow any water or other liquid to enter the device.
- Do not drop the device; it contains fragile electronics and cannot withstand shock from falls.
- Do not hit or scratch the screen. Handle it with care. The LCD panel of the photo frame is sensitive to excessive force and contact with sharp objects.
- For best user experience, please shut down/restart your frame every few days or if your frame becomes slow to respond. Like all electronics, shutting down and restarting your Wi-Fi Digital Photo Frame will refresh the internal RAM for better performance after extended use.

IMPORTANT: Before you install your Wi-Fi frame

- Peel back and remove plastic screen protector from the LCD panel using the tab in the upper right corner.
- Setup your Wi-Fi frame as close to your wireless router as possible (preferably within 20ft to ensure best connection).
- If you are going to place your frame more than 20 feet from your router or on another floor you may require a Wi-Fi extender (not included).

WALL MOUNTING

1. Insert a nail, screw, or hook into the wall in a location that will support the frame's weight.
2. Leave at least $\frac{1}{4}$ " (about 12mm) of the nail or screw exposed.
3. Hang the Wi-Fi Digital Photo Frame onto the nail, screw, or hook in either landscape or portrait orientation.



CONNECTING A USB DRIVE

To view photos from a USB flash drive, insert it into the USB port on the side of the frame.

NOTE:

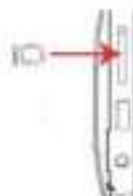
- Not all USB storage devices are compatible with this digital photo frame.
- USB drive must be formatted using the FAT32 file system. Drives formatted as NTFS or exFAT will not be recognized.
- The maximum USB flash drive size is 64GB.



INSERTING A MEMORY CARD

To view the pictures from a Secure Digital (SD), insert it into the memory card slot on the side of the Digital Photo Frame with the metal contacts of the card facing the LCD Display.

Please note that a microSD card requires an adapter (not included).



NOTE:

- Do not force the memory card into the slot. If you are not able to insert the memory card easily, you may have inserted it incorrectly; turn the card over and try again.
- Do not remove a memory card immediately after inserting it or when the frame is processing files. Wait until the screen is stable.
- Maximum SD card size is 64GB.

SETUP AND INSTALLATION

STEP 1: Wi-Fi Setup

Setup the Wi-Fi Picture Frame and connect to a Wi-Fi network

1. Locate the picture frame as close to the Wi-Fi router as possible, preferably within 20 feet.

2. Connect the included wall power adapter to the picture frame and plug the adapter into the wall (the unit will automatically turn on).

NOTE: When the frame powers on the Polaroid logo will flash twice on the screen while system initializes.

3. Please follow the on-screen prompts to continue set-up, then press Start.

4. Touch the screen, then the back arrow on the top left to take you to the home screen/main menu.

NOTE: If the frame changes to the slide show, tap anywhere on the screen to return to the home page.



5. On the home screen, tap the "Network" icon to reveal available Wi-Fi networks.



6. Tap the primary network you'd like to connect the Wi-Fi Picture Frame to.



Note: The Wi-Fi connection MUST be a 2.4GHz connection. If your wireless router is setup as a 5GHz network, you will need to setup a second 2.4GHz

network. See your router manufacturer documentation. There are also many videos on YouTube.com on how to perform this setup. Enter the Wi-Fi network password and click "Connect" to finalize the connection.



Note: A green check mark will appear next to the chosen Wi-Fi network if connection was successful. If it doesn't appear, the password has not been entered correctly. You must re-enter the correct password.

Once connected tap the back arrow in the upper left corner to return to the home screen. You should see that the Wi-Fi Network icon in the upper right part of the screen is green in color again signifying you have established an internet connection.

STEP 2: App Setup (Connecting Your Mobile Device)

Connecting Your Mobile Device

1. Download the Polaroid Wi-Fi Photo Frame 3.0 App from the Apple App Store or Google Play store.
2. Search for "Polaroid Wi-Fi Photo Frame 3.0"



3. Click the "Get" icon to install the App on your Apple device, or the "Install" icon on your Android device.
4. Once the installation is complete, open the App.



5. Next, tap "Link Frames" in the App.
6. On the frame, tap the "Link" icon from the home screen.



7. Enter the secure 8-digit Photo Frame Code found under step 3 on the "Link Frames" menu in the app. Then tap "Link".
Note: You can also scan the QR code from the "Link Frames" menu in the app by tapping the icon in the upper right corner to Scan QR code.



8. Enter the code and tap "OK".
9. The App will respond with the following notice after a successful secured connection with the frame: "Linked!". You can then type in a name to personalize your frame.

NOTE: The 8-digit code and QR code automatically change after 10 minutes so the 8-digit code needs to be used to link to the frame right away or the code will no longer work and



you will need to enter the new code. If you exit from the link screen, back to the main menu, and then go back into the link screen, the code will change and the prior code will not work even if it has not been 10 minutes. Your frame must have an internet connection to display a new 8-digit code and QR code.

10. Please be sure to check the Notifications section in the app for important communications about app updates as well as information pertaining to either required or unplanned temporary service disruptions.

SENDING PHOTOS & VIDEOS

STEP 1: Sending Photos to the Wi-Fi Photo Frame

Once Setup is complete you may send photos from your mobile device to the frame.

1. From the App main menu, tap the "Album" menu item.



2. Next, select the frame(s) you want to send the photos to by checking the circle next to the frame name or ID number.
NOTE: If multiple frames have been linked to the App you can select additional frames by checking the circle next to each frame.




*See the Tips section to learn how to personalize your frame's name in the App.

3. Tap the "+" icon to choose the photo(s) you want to send.



There is an option to either take a new photo or choose photos from your device's album(s)



- a. To take a new photo, tap "Camera".
Tap the circle on the screen to capture an image. (For selfies, tap the camera reverse icon ) Then tap the check mark to accept the photo, then tap "Complete" to add your photo to send.



Note: To record a video, press and hold the circle on the screen. As you record, the outer edge of the circle will display a blue or green line that progresses around the circle to show you approximately how much time you have left to record before you reach the maximum 15 second video. Once you have finished recording, press the check mark to accept the video or the back arrow to re-record the video.

- b. To add photos from your device's album, tap "Add Photos from Album". Select the photo(s) by tapping each desired photo. A highlighted check mark will appear for each photo selected. Tap "Complete" at the top right corner of the app to complete your selection.

NOTE: You can transfer up to 9 photos to the frame(s) each time you send. The transfer speed will vary on the strength of the Wi-Fi connection and speed of your internet service.



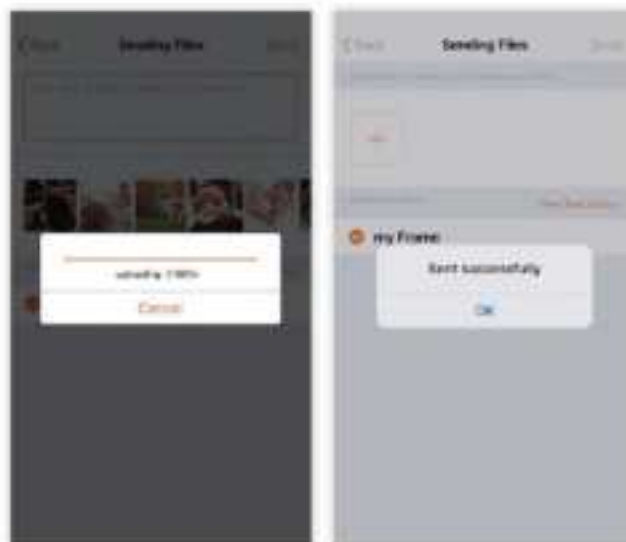
The App will return to the "Sending Files" screen as shown. Tap "Send" at the top right of the App to send the photos. The App will display the following messages indicating the photos were sent to the frame.

NOTE: If you are using an Android smart phone and you have input comments, the keyboard on some Android phones may cover up the "Select Frames" area on the app. If this happens to your Android smart phone, you will need to enable the floating keyboard so the keyboard can be moved on the screen allowing you access the "Select Frames" area where you can select which frame(s) to send photos/videos to.

4. The App will display the following messages indicating the photos were sent to the frame. *NOTE: If you are using an Android smartphone and you have input comments, the keyboard on some Android phones may cover up the "Select Frames" area on the app. If this happens to your Android smartphone, you will need to enable the floating keyboard so the keyboard can be moved on the screen allowing you access to the "Select Frames" area where you can select which frame(s) to send photos/videos to.*



5. The App will display the following messages indicating the photos were sent to the frame.



6. To preview and adjust photos before sending:
a. Tap "Preview".



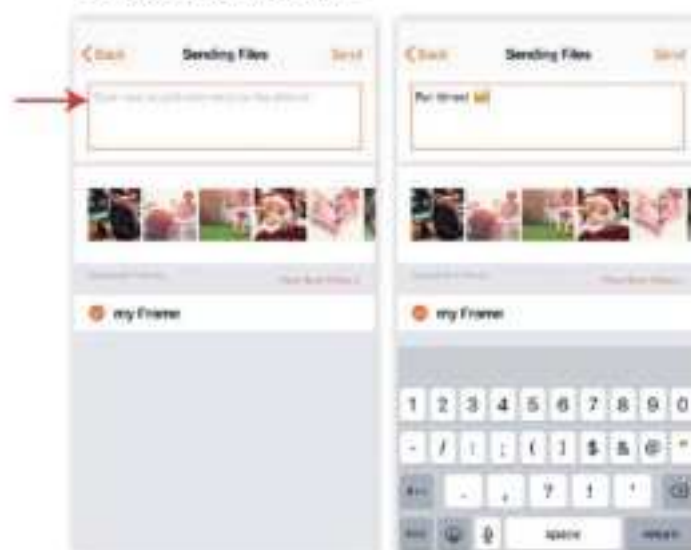
- b. Tap the crop icon below the selected image.



- c. Drag and zoom in on the image so the important area is centered in the highlighted area. Then tap "OK". (For multiple images added from your device's album, you can swipe to the desired image or select it from the thumbnails along the bottom.)
NOTE: This step is important when viewing photos in full screen mode on the frame, ensuring that the important area of the photo is not cut off (for example, photos that were shot in portrait orientation). When the display mode of the frame is set to "original" the frame will show the original photo without any cropping.

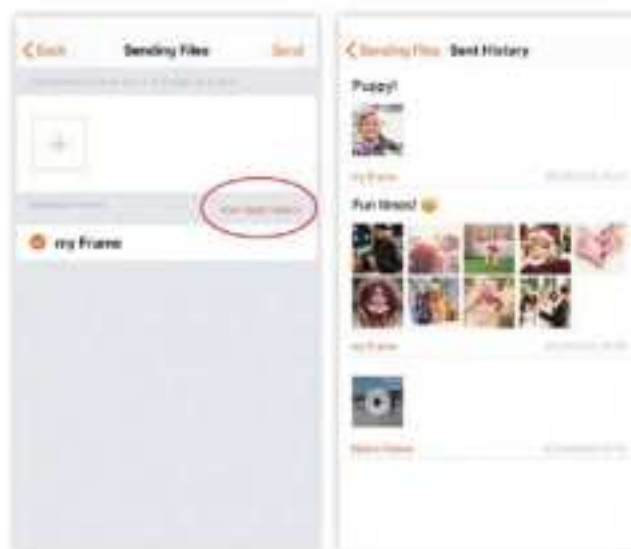


7. To add comments (captions) to your photos, tap in the comment box from the "Sending Files" screen. Use the keyboard to add your personal comments (including emojis) to the photos you want to send. Tap "Send". Comments will appear along the bottom of the image displayed on your photo frame.



*See the Settings/Options section to learn how to customize the comments settings on your frame.

8. To view your sending history, tap "View Sent History" from the "Sending Files" screen.



STEP 2: Sending Videos to the Wi-Fi Photo Frame

1. From the App main menu, tap the "Album" menu item.
2. Next, select the frame(s) you want to send the photos to by checking the circle next to the frame name or ID number.
NOTE: If multiple frames have been linked to the App you can select additional frames by checking the circle next to each frame.
3. Tap the "+" icon to choose the photo(s) you want to send.
4. Select "Add Videos from Album"



5. The app will access all of the videos and video albums on your phone.

NOTE: You must select each video one at a time, but you can add up to 9 videos in total before sending.



6. If the video is longer than 15 seconds, select the most important 15-second section of the video by sliding the frames with the selector at the bottom to the portion of video you most desire.
Note: You can also edit the length of the video to anything less than 15 seconds by dragging the sides of the selector to the portion and length of the video you choose.



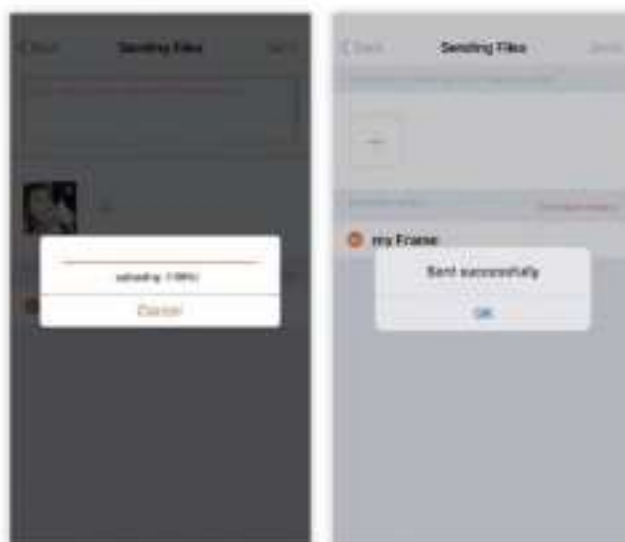
7. Tap "Save" to add the video to send to the frame.

8. To add another video, tap the "+" icon to add another video and repeat the process. You can add up to 9 videos or photos to send to the frame at one time.



9. Tap "Send" when all desired videos have been selected/added. The App will display the following messages indicating the videos were sent to the frame.

NOTE: Videos take longer to send than photos. If you have set your phone to 'Auto-lock,' please ensure your phone stays 'on' long enough for the videos to send. If your phone turns off by itself due to an 'Auto-lock' timer while the app is still sending the videos/photos, they will not go out and will need to be resent to the frame.



STEP 3: Sending Photos Directly from a Photo Album

If you choose to send photos directly from your device's photo album you can send up to 9 photos at one time.

For iOS devices:

Open the Photos app and choose an image you want to send to the frame and tap the "Send" icon. Then scroll through the photos and select up to 8 additional images for transfer, then tap the Polaroid App icon. The Polaroid Wi-Fi Photo Frame 3.0 App will briefly open so you can select the frames you want to send the photos to and add comments if you would like. Once complete, press 'Send' to transfer the photos.



For Android devices:

Access the photo album on the device and select the photos to transfer. Then tap the "Share" icon.



Tap the Polaroid App icon and then tap "Send".

The Polaroid Wi-Fi Photo Frame 3.0 App will open the Sending Picture screen to select the frame and send the photo.

If you choose to send photos directly from Google Photos you can send up to 9 photos at one time.

Open the Google Photos App and choose an image you want to send to the frame. If you want to send more than one image, long press the image and you will see a small checkmark on the photo you selected, then simply select up to 9 total images and tap the "Send" icon. Select the Polaroid Wi-Fi Frame 3.0 icon. The Polaroid Wi-Fi Photo Frame 3.0 App will briefly open so you can select the frames you want to send the photos/videos to and you can also add comments if you would like. Once complete, press "Send" to transfer the photos/videos.



For iOS smartphones and iPad



For Android smartphones

STEP 4: Send Photos to your Frame by Email

While it is easiest to send photos to your frame using the App, your frame does have an email address assigned to it which allows photos to be sent to the frame by email.

1. Not all email providers' software is compatible with the frame. To send photos to the frame by email please use only Outlook, Hotmail, or Gmail.
2. When sending a photo to the frame by email, do not include text, numbers or special characters in the subject or body of the email as this will prevent the email from being accepted by the frame. If you are prompted that your email is missing a subject please select to send it anyway.
3. You can find the email address for your frame by selecting settings from the Main Menu, then select Device Information from the list, and your email address will be listed on the Device Information screen.
4. You can send up to 6 MB in attachments (photos or videos), with a limit of 9 attachments per email. If you have more than 1 attachment (no more than 9 total), they must not add up to more than 6 MB.

NOTE: There are ways to change the size of photos if they are too large to email. See below for some examples, but you can also search google for "how to resize images" for your operating system as there are many ways to resize images and you might find another way that is easier for you.

Resize Photos using Windows 10

- a. Before opening the image, right click on your image file. When a pop-up menu box appears, click on Open With, then select Photos. Your image will open in the Photos app.
- b. Right click anywhere on the opened photo. Another pop-up menu will appear. Select Resize.
- c. The Resize image tool will open. Here you can select S (small), M (medium), L (large), or C (custom). Choose the best option to resize your photos so that they will fit within the 6 MB total attachment size for all attachments (up to 9 attachments at a time).

Resize Photos using a Mac

- a. If you want to keep a copy of your original sized photo, make a duplicate copy of the photos in another folder before resizing or you may overwrite your original photos with the resized photo.
- b. Open the Preview app on your Mac, open/select your photo, then choose Tools > Adjust Size
- c. Force the image to keep its original proportions: Select "Scale proportionally." If you change either the width or height, the other value changes to maintain the proportions.
- d. Resize the image by pixels: Choose "pixels" from the pop-up menu next to the Width and Height fields, then enter the pixel count in those fields. A good size for even the highest resolution Polaroid Wi-Fi frame is 1280 pixels for the Width and a resolution of 72

Tip: To resize multiple images at the same time, display the images in the same window, select them in that window's sidebar, then choose Tools > Adjust Size.

VIEWING PHOTOS & VIDEOS

RECEIVING PHOTOS AND VIDEOS ON THE FRAME

When you use the Polaroid Wi-Fi Photo Frame 3.0 App to send photos and/or videos to a linked frame, the frame will receive them automatically if the frame is connected to a Wi-Fi network with an internet connection. Once the frame receives the files, the frame will briefly display a blue banner at the top of the display showing "New Files Received". Additionally, during a slideshow, a new photo alert on the lower right side of the screen will display a count of how many new files have been received. The new photos will automatically be incorporated into the slideshow. A slideshow runs automatically on the frame if you do not touch the screen for 30 seconds, except when viewing individual photos or videos from the Photo or Video albums. During a slideshow, if there are new photos or new photos and videos and you touch the new photo alert, the frame will take you to the Photo album. If there are only new videos when you touch the new photo alert the frame will take you to the Video album.



VIEW PHOTOS IN THE PHOTO ALBUM

1. Select Photo icon on the home screen.



2. Received new photos are inserted at the beginning of the Photo album, swipe left on the screen to scroll through the album.
3. The Photo album automatically displays photos from all sources, including internal memory and any expandable memory you connect such as SD card and/or a USB flash drive. You can filter the photos displayed in the album by selecting an individual memory source from the top center of the album screen.



4. Tap the thumbnail of a photo for a larger view. Double tap the screen to zoom in, double tap to zoom in a second time to zoom in further, and double tap the screen again to return to the original size.
5. Swipe left to go to the next photo or swipe right to go to the previous photo.
6. Tap the screen anywhere and you can either select the back arrow to return to the photo album or select the trash can icon to delete the photo.

NOTE: Selecting a memory source in the Photo album will only affect the photo album while you are using it and will not change the slideshow settings. To change the memory source for a slideshow follow these steps:

1. Select "Settings" from the main menu.
2. Select "Slideshow"
3. Select the "Source" icon on the upper right side of the screen.
4. When the dialog box opens, select the desired memory source.
5. Turn on "Shuffle Playback" to have photos displayed in a random order for slideshows.
6. Select the X in the upper right corner to exit after making your selections.
7. Select "Apply" in the upper right corner of the slideshow settings to save your changes.



VIEW VIDEOS IN THE VIDEO ALBUM



1. Select Video icon on the home screen.
2. Select the video you would like to view.
3. While video is playing, you can tap anywhere on the screen to access the video controls (e.g. play, pause, volume control).

NOTE: If you want to view all videos as a continuous slideshow follow these steps:

1. Select "Settings" from the home screen.
2. Select "Slideshow"
3. Tap the video icon on the right side of the screen to select it and click "Apply" in the upper right corner.



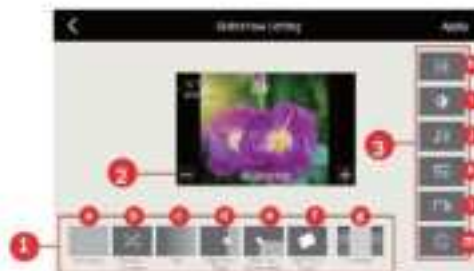
SETTINGS / OPTIONS

Other features and settings can be found in the "Settings" option on the main menu. To access the main menu from the slideshow, tap anywhere on the display, then tap the back arrow ↶.



Slideshow

1. Change the way the frame transitions from one photo to the next. Choose from: (a) Still photo, (b) Random Transition; (c) Fade; (d) Slide from Right; (e) Slide from Bottom Right; (f) Spin from Center; (g) Photo Blur. The Photo Blur feature changes the black bars (present on photos with a different aspect ratio than the frame) to be blurred bars using a blurred section of your photo to create complimentary colored bars that are more visually desirable than standard black bars.
2. Adjust the amount of time each photo is shown by adjusting the time on the preview screen, then tap "Apply" to save settings.



3. You can also choose what to display/play in the slideshow.
(h) Source; (i) Brightness; (j) Music; (k) Photos; (l) Videos; (m) Clock
4. In the preview screen you can drag the clock and move it to another position you would like to have it displayed during a slideshow.
5. The slideshow will play photos, videos and music in sequence. You can play photos / videos / music in random order by selecting the 'Source' icon, and then turn on "Shuffle Playback" in the dialog box. Select the 'X' in the upper right corner of the dialog box, and then select "Apply" on the slideshow setting screen to save your changes.

NOTE: To play music during a photo slideshow, select both the music and photo icons. Music will play during the slideshow if music is saved on the memory source that is selected with the source icon.

Storage Path

Select where photos/videos are received and stored by the frame. Choose from the frame's internal memory, USB (frame supports up to 64GB) or SD card (frame supports up to 64GB). Storage space (remaining memory) is displayed below each storage path. *(Note: The digital photo frame operating system and the sample photos/video utilize a portion of the 8GB total internal memory, so available memory will always be less than 8GB even if all sample photos/video are deleted from the frame.)*

Music

Songs for all memory sources are displayed here and can be played by selecting the thumbnail of the song. To import music, insert USB flash drive or SD card that contains music files. Select "Music" in the Settings menu. Tap "Menu" in the upper right corner, then select "Import" to bring up the list of music files. Select "All" or tap on each file individually to select which files to import. Compatible with audio file formats: FLAC, AAC, MP3, OGG, and WAV.

New Photo Alert

New Photo Alert will allow you to select how long the "New Photo" icon is displayed after new photos are received. Choose from 24, 48 or 72 hours.

Sleep Mode

The sleep timer can be set to put the frame to 'sleep' to conserve energy. You can set multiple times or ranges the display will be automatically turned on/off.

Date & Time

You can select the date and time settings and set the time zone, date and time formats. The frame will automatically adjust for daylight savings time.

Display Mode

Display Mode allows you to select how your photos are displayed, either in the original format/size or full screen.

NOTE: We recommend you take photos in the same orientation that you use your frame (Landscape is the most common). Due to the original photo resolution and format, some photos may NOT be able to fill the entire screen. We encourage you to experiment with the settings or photo blur feature.

Manage Users

This setting allows you to manage (edit, delete) the mobile devices you have linked to your frame.

*See the Tips section (*Removing and blocking linked devices from your frame*) for more information.

Comments

You can choose how long you want the comments to be displayed on your photos: Do not show comments, Show comments for 10 seconds (comments will appear when you tap on a photo and disappear after 10 seconds), or Always show comments.

Device Information

Here you can find your frame's information including frame name, SN number, Email address and Hardware version. You can also check for firmware updates for your frame to keep it up-to-date.

TIPS FOR THE FRAME

Power button

- Press the power button on your frame to put it into screen sleep mode. Tap anywhere on the screen to turn the screen back on.
- Press and hold the power button, then choose to "Power Off" or "Restart" your frame. If powered off, press the power button to turn it back on.
- For best experience, power off the frame or restart every few days or more often if preferred.

Deleting files from your frame

From the main menu, select either photo/video, scroll through the album to find the file you would like to delete and tap on it. When the photo/video is shown in full screen, touch the screen to see a trash can icon in the upper right corner. To delete the photo/video, select the trash can icon and then select "YES" to confirm delete.

You can also delete all photos/videos or multiple photos/videos at one time. In the Photo/Video album screen, tap on "Menu" in the upper right

corner, then select "Delete". Tap the file you want to delete. A check mark will appear on that file. You can then select each additional file you want to delete by tapping on them. Then tap "OK" to delete those photos/videos. A message will pop up asking "Confirm to delete?". Tap "YES" to confirm.

If you want to delete all files at one time, tap on "Menu" in the upper right corner, then select "Delete". Tap "All" in the upper right corner, all files will be selected. Tap "OK" to delete all photos/videos, then tap "YES" in the pop-up message to confirm delete.

Forget Wi-Fi Networks

You can forget networks you have previously connected. From the main menu, select "Wi-Fi", select the name of the network you would like the frame to forget and select "Forget".

Choose memory source for photos/videos/music

If an external memory card and/or USB flash drive is connected to the frame, the frame will automatically display photos from all memory sources connected. This includes the internal memory, USB flash drive, and memory card. You may choose to limit the photos shown on the frame by the memory source. From the main menu, select "Settings", then select "Slideshow" on the Settings menu. In the Slideshow settings select the "Source" icon on the upper right side of the screen. When the dialog box opens, select the desired memory source. Select the X in the upper right corner to exit. Select "Apply" in the upper right corner of the slideshow settings to save your changes.

Slideshows will now only feature photos, videos and music found on the memory source you selected.

Exporting and importing photos

You can import photos to your frame's internal memory from a USB flash drive or an SD card.

1. When either a USB or SD card is inserted, select "Album" from the main menu.
2. Tap "Menu" in the upper right corner, then select "Import" from the drop down menu. Only images from your external memory device will appear on your screen.
3. Tap each photo you want to import. A check mark will appear on each



selected photo. Or you can select "All" in the upper right corner to select all photos.

4. Tap "OK". A message will pop up while your images are being imported. When the import is complete, a message will pop up saying "Import Success". Tap "OK" to exit the message, then tap the back arrow in the upper left corner to return to your album.

You may also want to export photos from your frame's internal memory to a USB flash drive or an SD card for printing, or other storage purposes.

1. When either a USB or SD card is inserted, select "Album" from the main menu.
2. Tap "Menu" in the upper right corner, then select "Export" from the drop down menu.
3. Tap each photo you want to export. A check mark will appear on each selected photo. Or you can select "All" in the upper right corner to select all photos.
4. Tap "OK". A message will pop up while your images are being exported. When the export is complete, a message will pop up saying "Export Success". Tap "OK" to exit the message, then tap the back arrow in the upper left corner to return to your album.




Clearing "New" notification from your photos

Once the frame receives new photos, you will see a notification on the display that new photos were received. The new photos will appear at the beginning in your photo album. They will be marked with a "New" notification in the corner of each new photo. To remove this notification select "Album" from the main menu. Tap "Menu" in the upper right corner, then select "Clear New". This also clears the notification in the lower right corner of the display during the slideshow.



Removing and blocking linked devices from your frame

If you decide you no longer want to receive photos/videos from a particular device, you can remove and block that device from sending photos/videos to your frame.

1. Select "Settings" from the main menu.
2. Select "Manage Users"
3. Tap on the delete icon  next to the name of the linked device you want to remove. A message will pop up asking "Confirm to delete?" Tap "YES" to confirm.

NOTE: Once you have removed the device it can no longer link to the frame again without having a new secure 8-digit Photo Frame Code.

Viewing comments and information on your photos/videos

Photo comments and information will appear along the bottom of each photo in the slideshow (See Settings/Options: Comments Settings to learn how to display comments). See image below for details:



1. Comments (captions)
2. Linked device
3. Date received

Weather

From the main menu select "Weather". The frame will initially display the weather for your location based on your internet connection. Sometimes, the city displayed may be not be accurate, if so, tap anywhere on the screen and select 'City' at the top right of the screen. Type in the name of your city, and if available select it from the drop down. Not all US cities are listed in the drop down, if your city is not listed try entering another nearby city.

Low Resolution Photos

If the frame detects a photo that is of a low enough resolution to cause a poor quality image to be displayed, the frame will display a yellow warning icon in the photo album thumbnail view. When viewing the image in large format on the frame, if you tap on the screen you will also see the warning icon in the bar, if you tap on the icon a dialog box will open which explains the reason for the icon.



Keep your frame up-to-date

To upgrade your frame to the latest software, select "Device Information" from the Settings menu. Then select "Check for updates".

TIPS FOR THE APP

Personalizing frame names

When you link a frame, a confirmation will pop up saying "Linked!". At that time you can enter a name for your frame in the text field on the pop-up.

You can always name a frame at another time or edit a frame name from the Link Frames screen. In the list of linked frames, select the edit icon next to the Photo Frame ID number/name you wish to edit, then select "Modify". On the "Name your frame" pop-up, type in the desired name, then select "OK".



This is especially useful if you have linked to more than one frame.

Unlink a linked frame

You can delete a linked frame in the Photo Frame App if needed. In the list of linked frames, select the edit icon next to the Photo Frame ID number/name you wish to unlink. Confirm by selecting "OK". If you accidentally deleted a linked frame, you will need to link the frame again using a newly generated Photo Frame Code which can be found in the Link screen on the digital photo frame.

Sending images to multiple frames

You can send images to more than one frame at a time. In the Sending Pictures screen, tap each frame you want to send your images to. An orange check mark will appear next to each selected frame. Add your photos and click "Send".

Naming your Android / iOS smart phones and iPad

It is recommended to name your device(s) before linking to a Wi-Fi photo frame. The name of the device will appear in the comments window along the bottom of each photo during the slideshow, indicating who sent the photo to your frame.

If you don't know how to name your compatible smart phone or iPad, you can search the internet for step-by-step instructions for your model. Please be aware that some android smart phones do not allow the phone name to be changed or will not allow a changed name to be repeated within the Polaroid Wi-Fi Digital Photo Frame 3.0 App.

For example, to name your iPhone or iPad, follow these steps:

1. On your iOS device, go to Settings > General > About.
2. Tap the first line, which shows the name of your device.
3. Rename your device, then tap Done.

(<https://support.apple.com/en-us/HT201997>)

If a device does not have a personalized name, it will show up as the device's default product name.

If a device does not have a personalized name, it will show up as the device's default product name such as 'XT1530'.

Snap Chat – How to save Photos and Videos

There are many ways to save and share your Snapchat photo and video filters to your Android smartphone, iPhone or iPad so that you can view them on your Polaroid Wi-Fi Photo Frame. We list out a few ways below but please note that many devices operate differently so if troubled please search the internet for the way that is most compatible for your listed device.

1. Before you send your snap out, open Snapchat settings. From there, go to memories.
2. You should have the option to either save to memories or to save to camera roll/photo album. Saving to memories will back up your photo/video on the Snapchat servers. Choosing to save to the camera roll/photo album will allow you to access the snap on your Android smartphone, iPhone or iPad camera roll. You can also save them to both.
3. If you're saving to camera roll be sure to select the save icon that appears on your screen.



4. Once the snap appears in your camera roll you will be able to share it with your Polaroid Wi-Fi Photo Frame 3.0 app which will allow you to send it to any compatible Polaroid Wi-Fi Photo Frame.

FCC WARNING STATEMENT

This equipment has been tested and found to comply with the limits for a Class B digital device, pursuant to part 15 of the FCC Rules. These limits are designed to provide reasonable protection against harmful interference in a residential installation. This equipment generates, uses and can radiate radio frequency energy and, if not installed and used in accordance with the instructions, may cause harmful interference to radio communications. However, there is no guarantee that interference will not occur in a particular installation. If this equipment does cause harmful interference to radio or television reception, which can be determined by turning the equipment off and on, the user is encouraged to try to correct the interference by one or more of the following measures:

- Reorient or relocate the receiving antenna.
- Increase the separation between the equipment and receiver.
- Connect the equipment into an outlet on a circuit different from that to which the receiver is connected.
- Consult the dealer or an experienced radio/TV technician for help.
- Caution: Any changes or modifications to this device not explicitly approved by manufacturer could void your authority to operate this equipment.

This equipment complies with FCC RF radiation exposure limits set forth for an uncontrolled environment.

This equipment should be installed and operated with minimum distance 20cm between the radiator and your body.

For service assistance and product information please call:
1-855-544-4841 (Toll Free)

PA Brands
216 Route 206, Suite 1, Hillsborough, NJ 08844-4136

UNITED STATES LIMITED WARRANTY TO ORIGINAL CONSUMER

This Product (including any accessories included in the original packaging) as supplied is warranted by RA Brands to the original consumer purchaser against defects in material and workmanship ("Warranty") as follows:

| Product Type | Parts Warranty | Labor Warranty |
|------------------------|----------------|----------------|
| Digital Picture Frames | 90 Days | 90 Days |

To obtain Warranty Service and Troubleshooting information: Visit our website at www.polaroid.com or contact the Consumer Care Center at 1-855-544-4841.

To receive Warranty service, the original consumer purchaser must contact RA Brands for problem determination and service procedures. Proof of purchase in the form of a bill of sale or receipted invoice from RA Brands or its authorized resellers, evidencing that the Product is within the applicable Warranty period(s), MUST be presented to RA Brands, in order to obtain the requested service.

Exclusions and Limitations

Shipping expenses to the RA Brands service center are not covered by this warranty. This Warranty covers manufacturing defects in materials and workmanship encountered in the normal, noncommercial use of the Product, and does not cover consumer instruction, delivery, installation, set-up, adjustments, cosmetic damage or damage due to acts of nature, accident, misuse, abuse, negligence, commercial use or modification of, or to any part of the Product. In addition, this Warranty does not cover images "burnt" into the screen. This Warranty applies to the original consumer only and does not cover products sold AS IS or WITH ALL FAULTS, or consumables (e.g., fuses, batteries, bulbs, etc.), and the Warranty is invalid if the factory-applied serial number has been altered or removed from the Product. This Warranty is valid only in the United States, and only applies to products purchased and serviced in the United States.

NO WARRANTIES, WHETHER EXPRESS OR IMPLIED, INCLUDING, BUT NOT LIMITED TO, ANY IMPLIED WARRANTIES OF MERCHANTABILITY OR FITNESS FOR A PARTICULAR PURPOSE, OTHER THAN THOSE EXPRESSLY DESCRIBED ABOVE, SHALL APPLY. MANUFACTURER FURTHER DISCLAIMS ALL WARRANTIES AFTER THE EXPRESS WARRANTY PERIOD STATED ABOVE. NO OTHER EXPRESS WARRANTY

OR WARRANTY GIVEN BY ANY PERSON, FIRM OR ENTITY WITH RESPECT TO THE PRODUCT SHALL BE BINDING ON P&B BRANDS. REPAIR, REPLACEMENT, OR REFUND OF THE ORIGINAL PURCHASE PRICE—AT P&B BRANDS' SOLE DISCRETION—ARE THE EXCLUSIVE REMEDIES OF THE CONSUMER. P&B BRANDS SHALL NOT BE LIABLE FOR ANY INCIDENTAL OR CONSEQUENTIAL DAMAGES CAUSED BY THE USE, MISUSE OR INABILITY TO USE THE PRODUCT. NOTWITHSTANDING THE FOREGOING, CONSUMER'S RECOVERY AGAINST P&B BRANDS SHALL NOT EXCEED THE PURCHASE PRICE OF THE PRODUCT SOLD BY P&B BRANDS. THIS WARRANTY SHALL NOT EXTEND TO ANYONE OTHER THAN THE ORIGINAL CONSUMER WHO PURCHASED THE PRODUCT AND IS NOT TRANSFERABLE.

Some states or provinces do not allow the exclusion or limitation of incidental or consequential damages or allow limitations on warranties, so limitation or exclusions may not apply to you. This warranty gives you specific legal rights, and you may have other rights that vary from state to state or province to province. Outside the 50 United States, this warranty does not apply. Contact your authorized retailer to determine if another warranty applies.



This product is manufactured, distributed and sold by P&B Brands.

Polaroid, Polaroid Color Spectrum and Polaroid Classic Border logos are trademarks of P&B IP Holdings, LLC, used under license. All other trademarks are the property of the respective owner, who has not sponsored, endorsed or approved this product. P&B IP Holdings, LLC does not manufacture this product or provide any Manufacturer's Warranty or support.

© 2021 All Rights Reserved

Made in China

Distributed by P&B Brands, Minneapolis, MN 55340

SD, SDHC, SDXC, and microSD are trademarks of SD-3C LLC in the United States and/or other countries.
Wi-Fi is a trademark of Wi-Fi Alliance.
IOS is a trademark or registered trademark of Cisco in the U.S. and other countries and is used under license.
Apple, Mac, Mac OS, iPad are trademarks of Apple Inc., registered in the U.S. and other countries.
Android and Gmail are trademarks of Google Inc.
Google Photos and the related logo are trademarks of Google LLC.
SNAPCHAT and the Ghost Logo are trademarks of SNAP INC.
Windows, Hotmail, and Outlook are trademarks of Microsoft Corporation.
Linux is a trademark of Linus Torvalds.

Polaroid