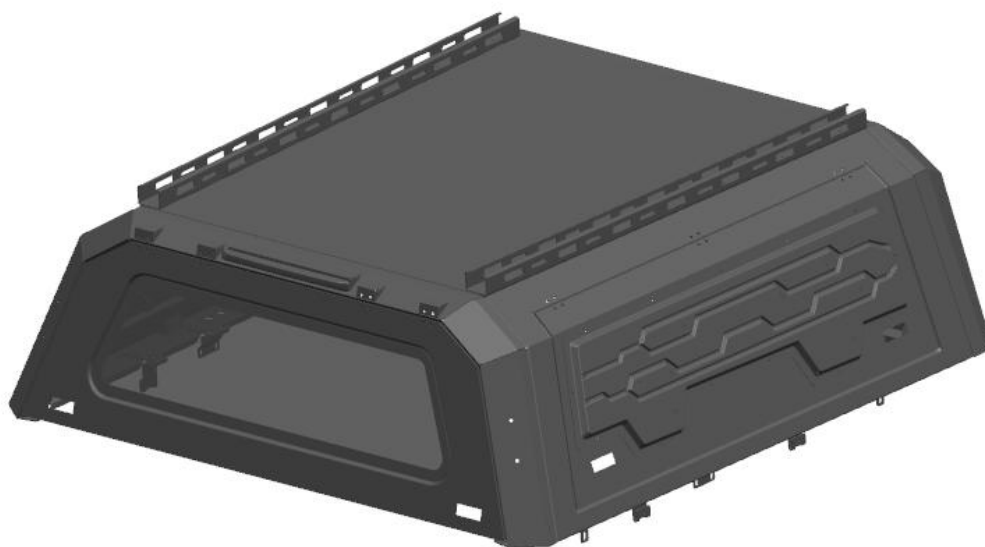









CANOPY INSTRUCTION MANUAL



Please read the instruction manual carefully to avoid damaging parts or vehicles, thank you.

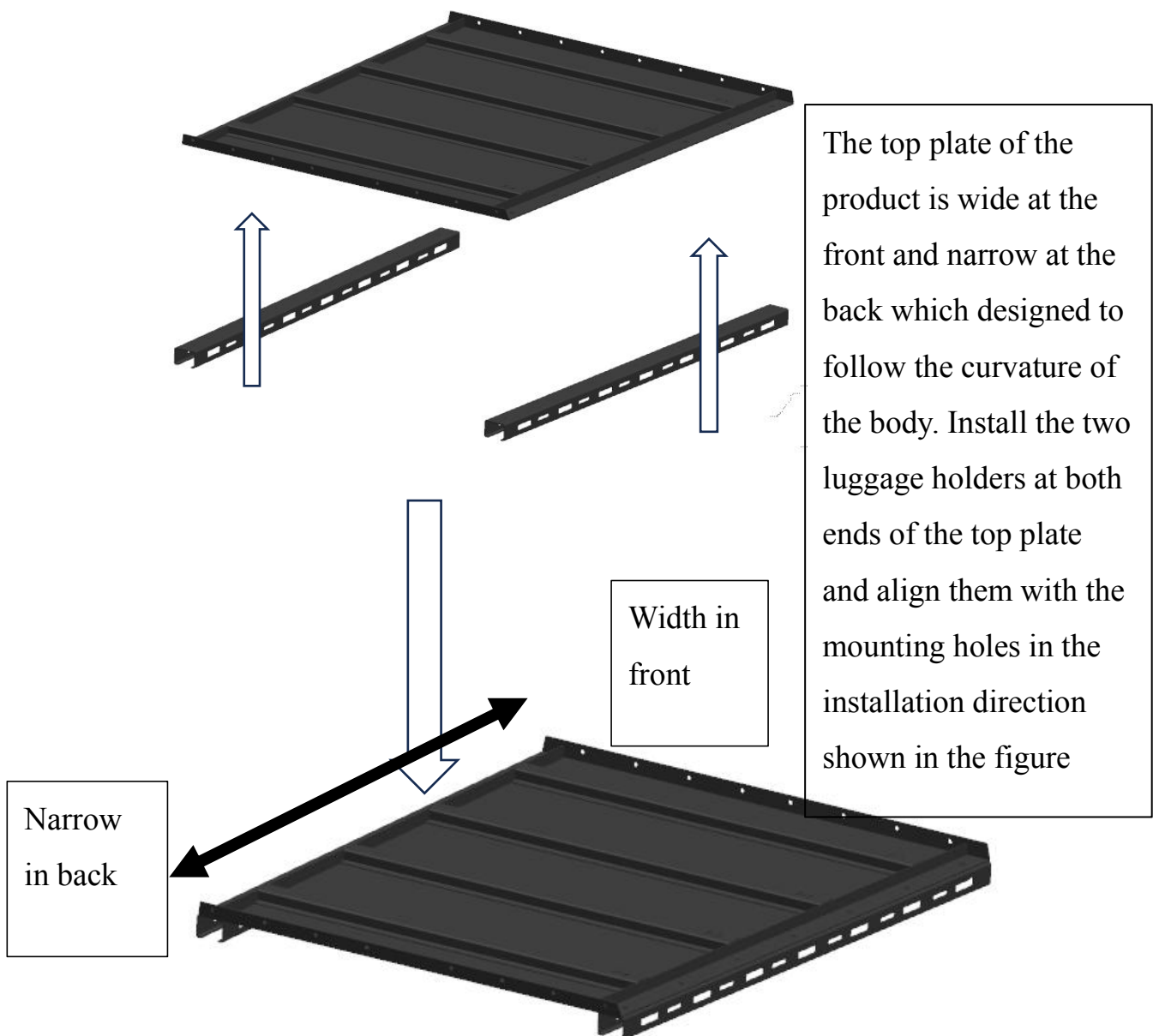
1 , List of installation manifests

The following is a list of installation checklists for this product, When you receive this package, please check the number of parts with this list carefully. If there is any discrepancy, please contact us in time to avoid the wrong installation or missing installation of parts during the installation of this product.)

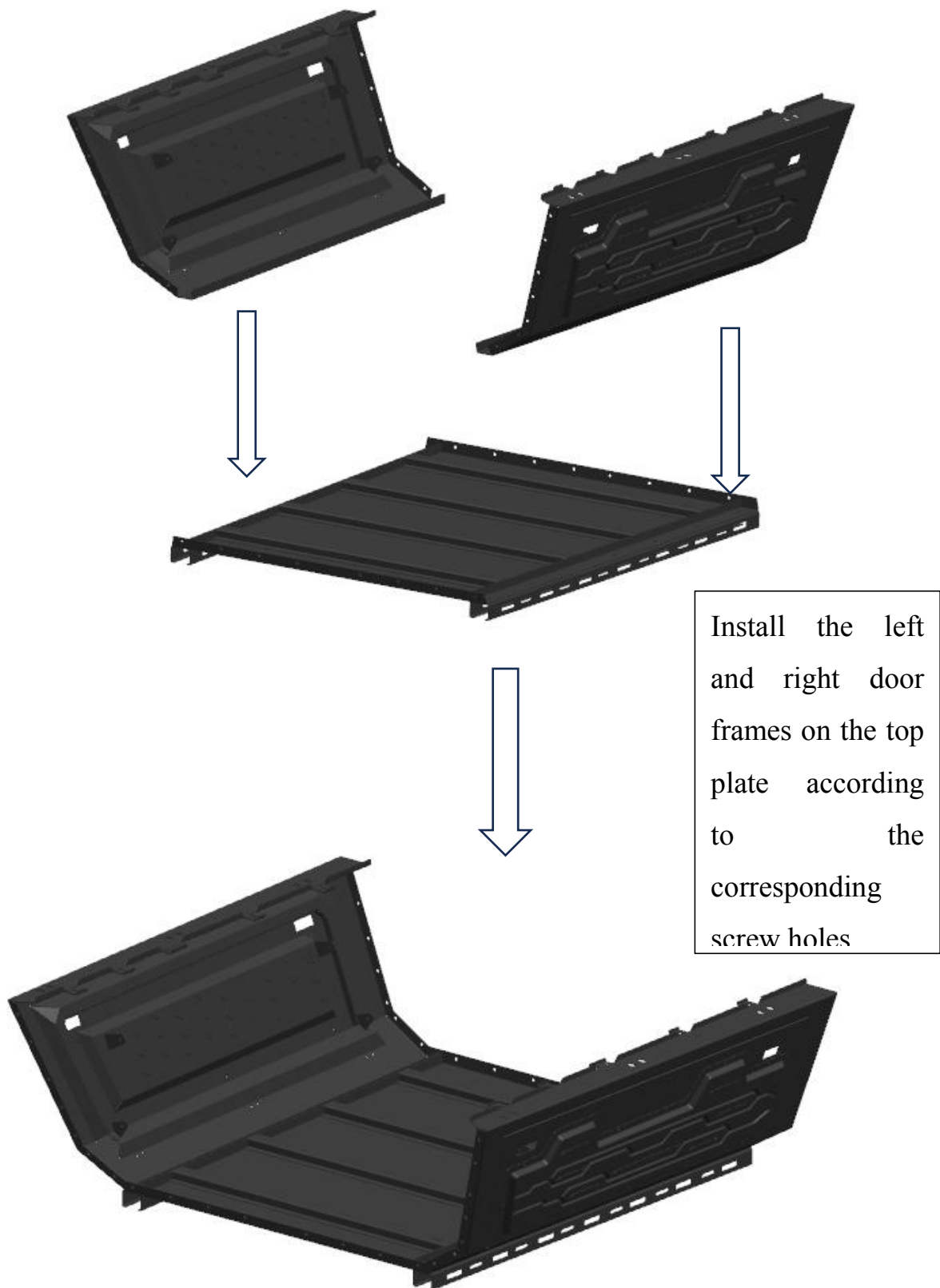
Name of Parts	Photo	Quantity
Front door		1
Rear door		1
Left door		1
Right door		1
Roof plate		1
Luggage holder		2
Fixed bottom plate		2

2, Installation Steps

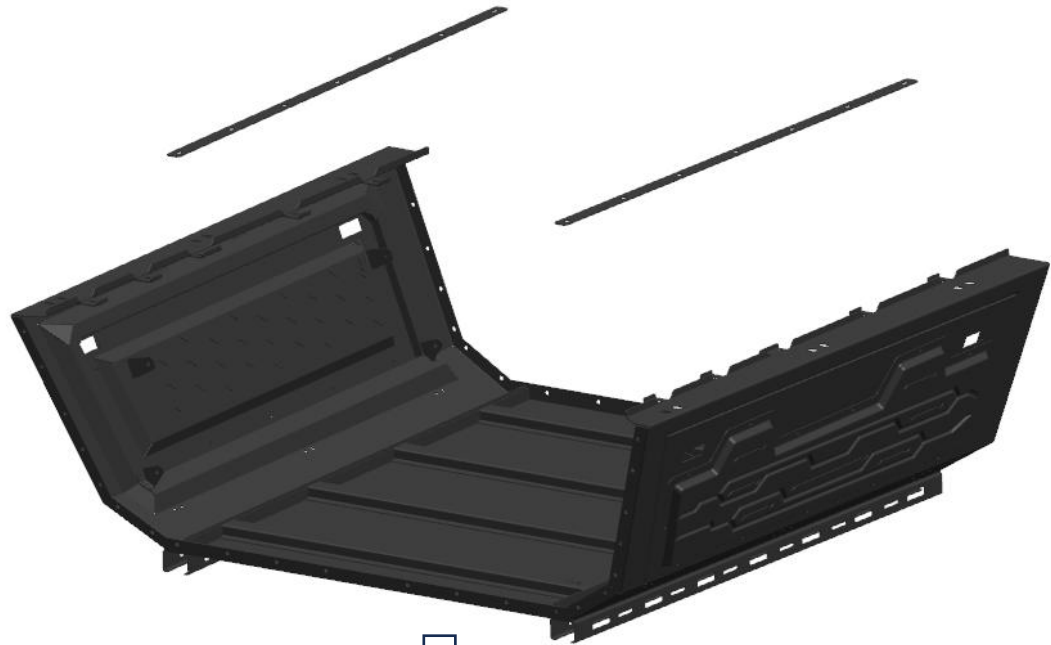
Step 1: Install top plate and luggage holder



Step 2: Install the left and right door frames

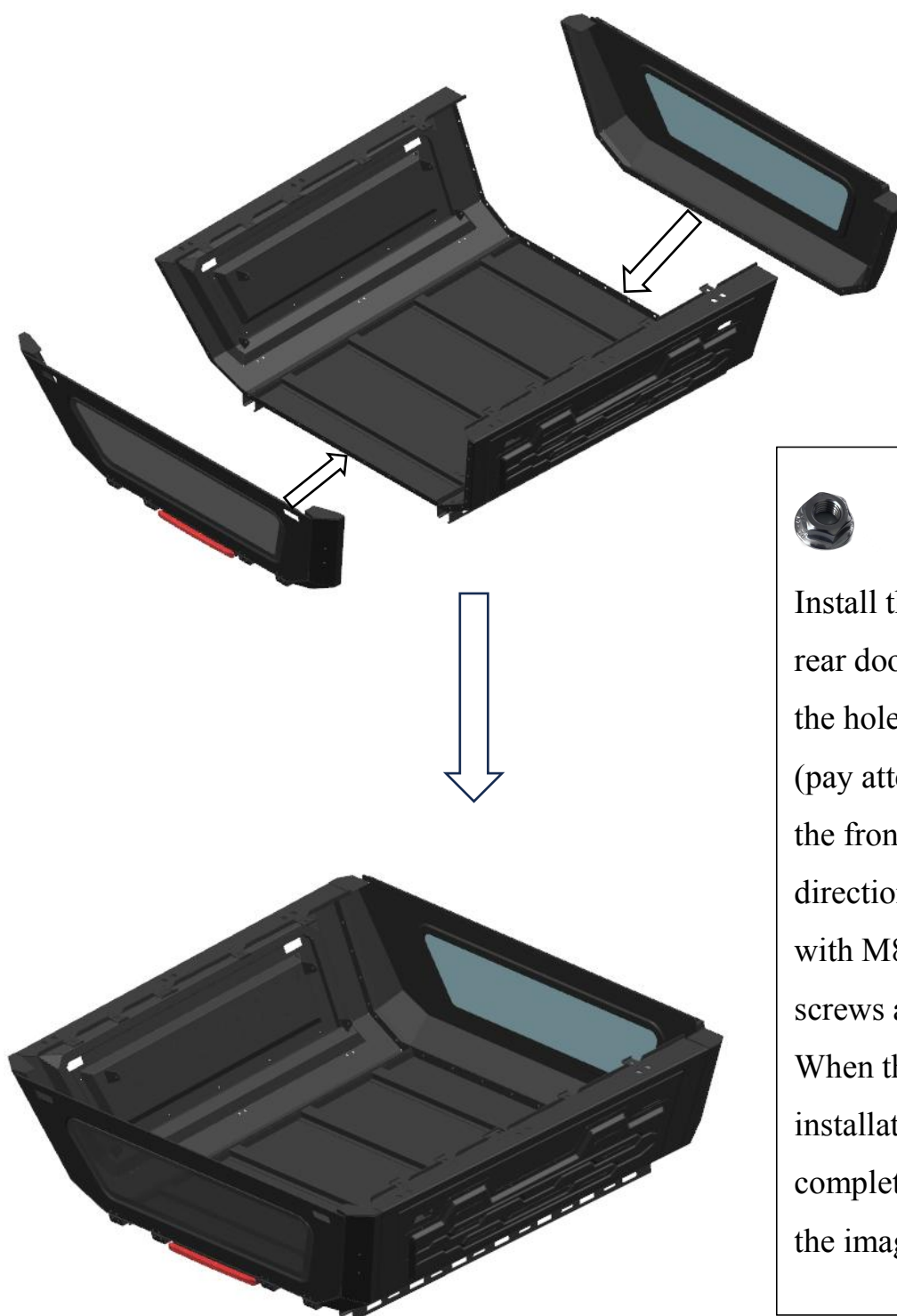


Step 3: Install the fixed base plate above the left and right door frames.



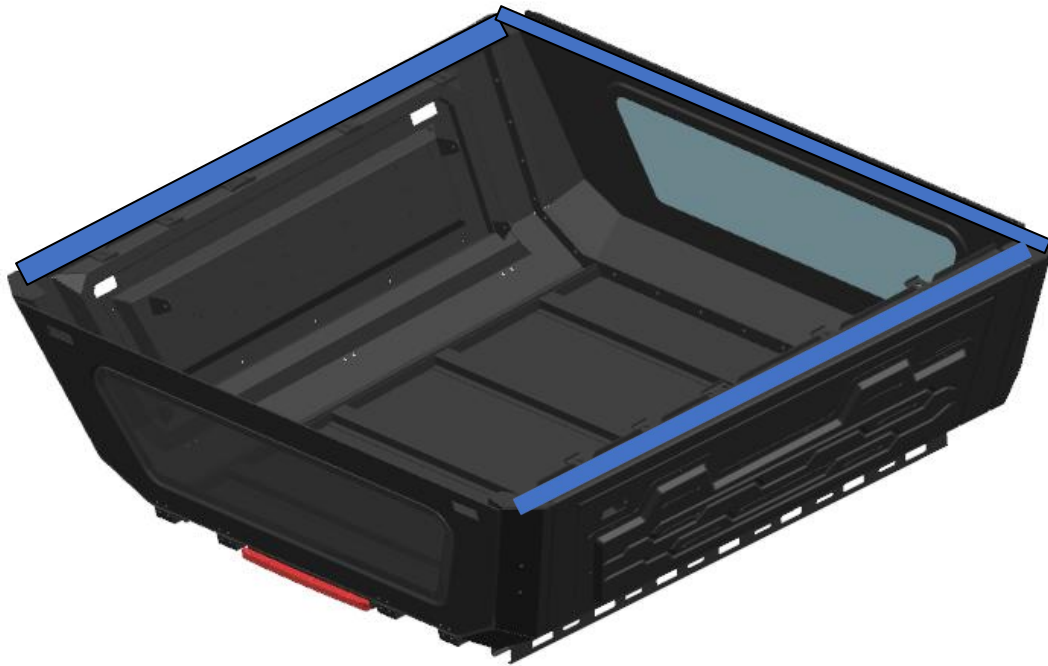
After the fixed base plate is installed, use sealant to glue each screw, finally, fix with an M6 nuts

Step 4: Install front and rear door frames



Install the front and rear door frames in the hole position (pay attention to the front and rear directions!) Fixed with M8 type screws and nuts, When the installation is complete, this is the image below:

Step 5: Install a type B rubber strip on the bottom of the canopy.



When the main body installation is complete, glue with a type B rubber stipe on the bottom of the canopy (the blue area selection is shown in the figure)

Step 6: Glue sealing is carried out in the splicing part of the main body of the product



The front and rear frames and the side frame splicing parts of the top plate are bonded with beautiful seam tape on both sides.



After the bonding is completed, the glue is used to seal the splicing.



After the glue is finished, use auxiliary tools to sew the glue and tear the sewing tape.

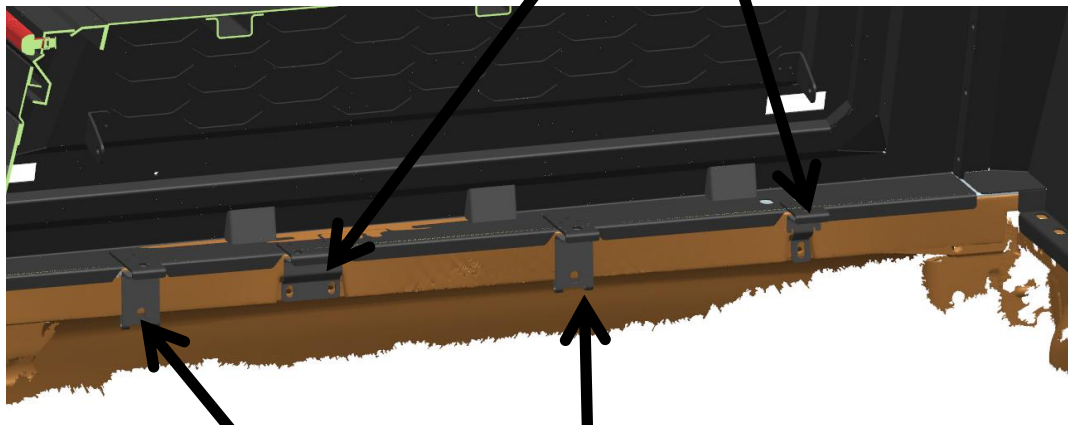




Step 7: The product is assembled and installed on the car.



Secured with original bore and auxiliary snaps for non-destructive installation

  Install with the original hole bracket and fixed with the M8 type screw and anti-release nuts.



  Install using snap-on brackets and fixed with the M8 type screw and