

Tools Required
16mm, 10mm Socket
19mm, 10mm Wrench
Ratchet
Torque Wrench



Before Installation:

Read this instruction carefully before starting installation.

Proper tools will improve the quality of installation and reduce the time required.

If missing parts or any damage found, please take a picture, and contact us. Professional installation would be highly recommended.

Periodic check to ensure all mounting hardware remains secure and tight.

The front spot light require self-wiring, the harness is not include.

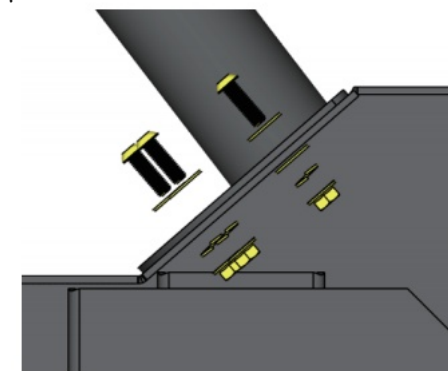
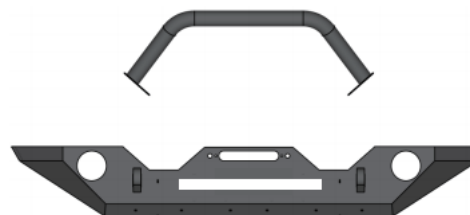
For more towing and off-road recovery information, please check the vehicle owner's manual.

Step 1:

1. Remove (6) rivets and (2) bolts securing the frame cover between the grille and front bumper.
2. Remove (7) rivets and (2) bolts holding the splash guard and remove the splash guard cover. Remove (2) bolts securing the splash guard panel.
3. Disconnect fog lamp connectors.
4. Remove (8) M12 hex nuts holding the bumper onto the frame rail.
5. Carefully remove the front bumper.
6. Remove factory fog lamps.

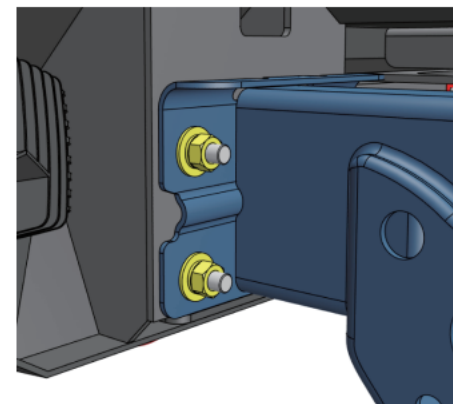
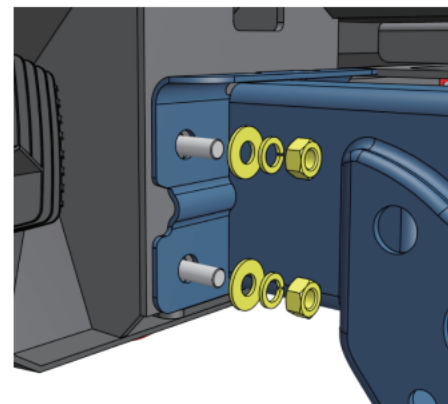
Step 2:

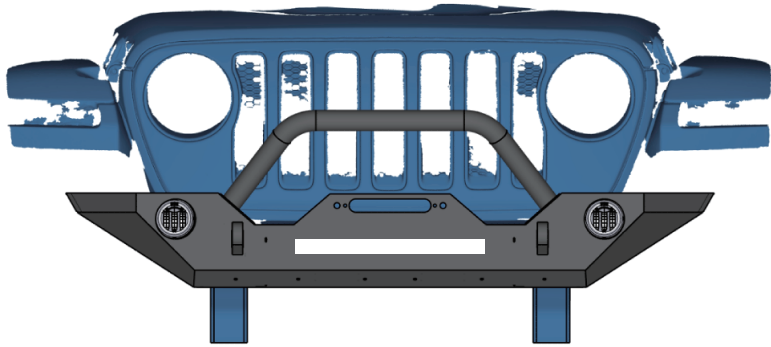
1. Position the bull bar to the front bumper.
2. Secure the bull bar using (6) M6 hexagon bolts, (12) M6 flat washers, (6) M6 lock washers, (6) M6 hexagon nuts.
3. Tighten M6 hardware with 7 ft. lbs. torque.



Step 3:

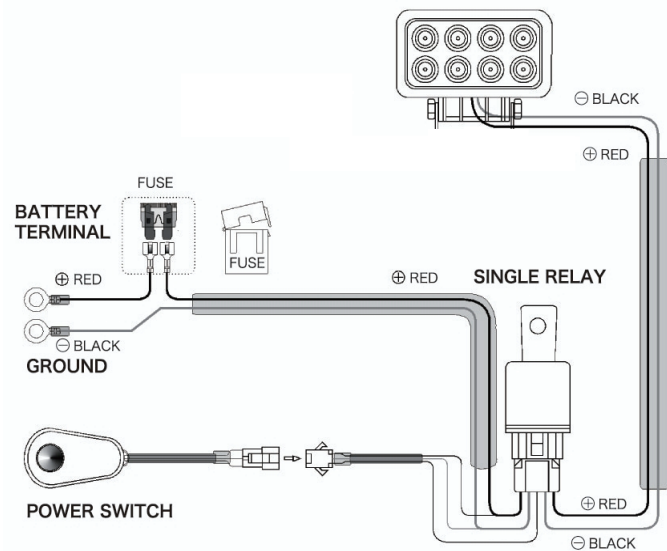
1. With assistance, place the bumper onto frame rail.
2. Secure the bumper to frame rail with (8) M10 flat washers, (8) M10 lock washers, (8) M10 hexagon nuts.
3. Tighten M10 hardware with 31 ft. lbs. torque..





Step 5:

1. Wiring the LED light bar refer to following diagram.
2. Install (2) D-rings to shackle mounting brackets.
3. After the bumper installed, periodic check to ensure all mounting hardware remains secure and tight.



Part List:

	Qty.	Description
①	×8	M10×30 Flat Washer
②	×8	M10 Lock Washer
③	×8	M10 Hexagon Nut
④	×6	M6×16 Hexagon Bolt
⑤	×12	M6×18 Flat Washer
⑥	×6	M6 Lock Washer
⑦	×6	M6 Hexagon Nut
⑧	×1	Wire Harness
⑨	×2	D-Ring Shackle
⑩	×1	Bull Bar

