

Folding Bluetooth keyboard With Touchpad

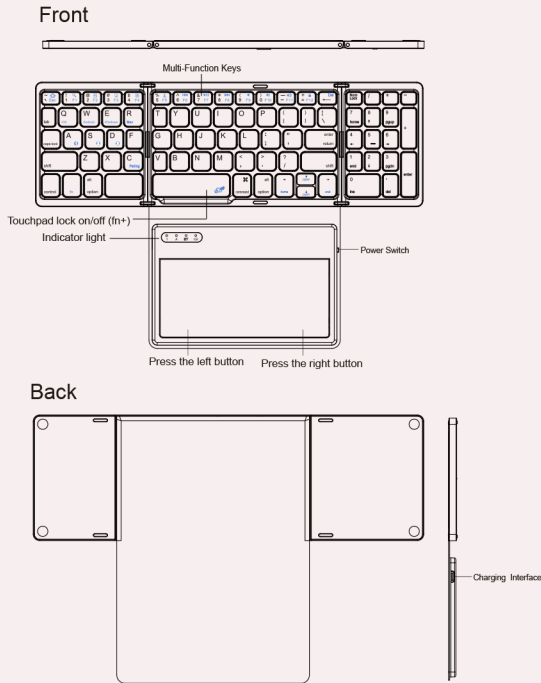
User's Manual

Compatible System

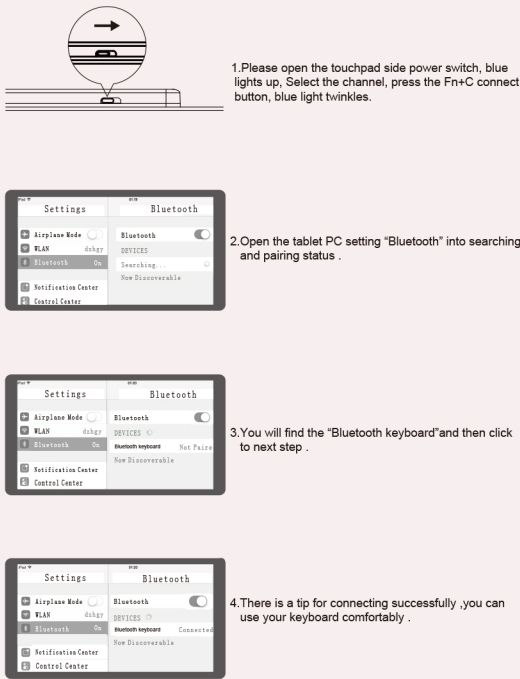
Win /iOS /Android/Mac

Note: Please read the user manual carefully before you start using this product

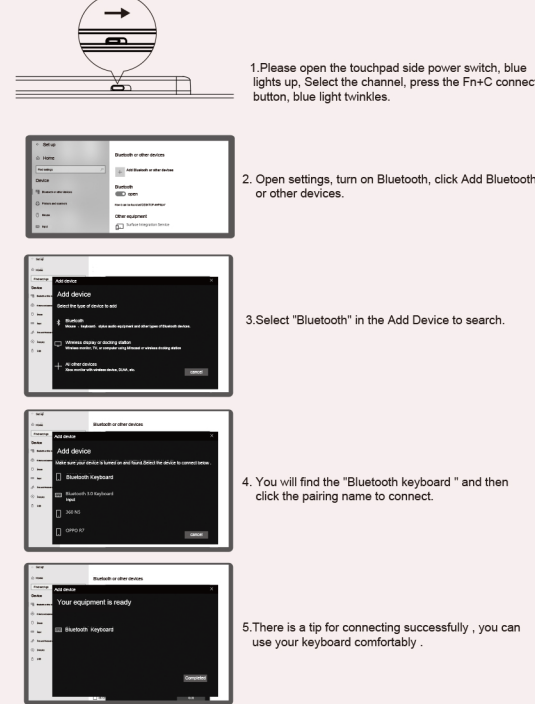
Product introduction



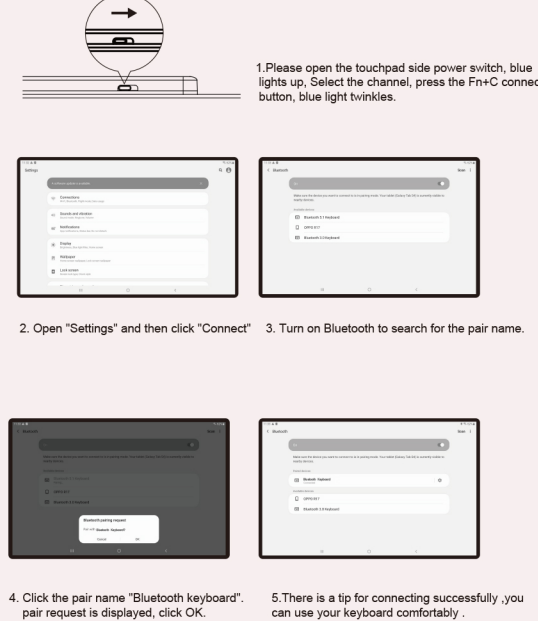
• iOS Connection Instructions:



• Win 10 Connection Instructions:



• Android Connection Instructions:



• MasOS connection instructions:



Remarks: After connecting successfully the next time you don't need match code, just open the Bluetooth keyboard power switch and the tablet PC 'Bluetooth.' The BT keyboard will search the device and automatic connects.

Product features

iOS/Android		Windows		Windows	
Fn+	Corresponding function	Fn+Shift+	Corresponding function	Fn+	Corresponding function
~⇧	Return to Desk	~⇧	Home Page	~⇧	Esc
! 🔍	Search	! 🔍	Search	! 🔍	F1
1 F1		1 F1		1 F1	
@ 📄	Select	@ 📄	Select	@ 📄	F2
2 F2		2 F2		2 F2	
# 📄	Copy	# 📄	Copy	# 📄	F3
3 F3		3 F3		3 F3	
\$ 📄	Stick	\$ 📄	Stick	\$ 📄	F4
4 F4		4 F4		4 F4	
% 📄	Cut	% 📄	Cut	% 📄	F5
5 F5		5 F5		5 F5	
⏮ ⏪	Previous track	⏮ ⏪	Previous track	⏮ ⏪	F6
6 F6		6 F6		6 F6	
& ⏮ ⏪	Play/Pause	& ⏮ ⏪	Play/Pause	& ⏮ ⏪	F7
7 F7		7 F7		7 F7	
* ⏮ ⏪	Next track	* ⏮ ⏪	Next track	* ⏮ ⏪	F8
8 F8		8 F8		8 F8	
(⏮	Mute	(⏮	Mute	(⏮	F9
9 F9		9 F9		9 F9	
) 🔊	Volume-) 🔊	Volume-) 🔊	F10
0 F10		0 F10		0 F10	
← 🔊	Volume+	← 🔊	Volume+	← 🔊	F11
- F11		- F11		- F11	
+ 🔒	lock	+ 🔒	lock	+ 🔒	F12
= F12		= F12		= F12	

Three system input method switch

iOS/Mac: control+ Space key

Windows : control+ Shift

Android : control+ Shift

Three system switching languages

iOS/Mac : control+Space key switch language

Windows : Alt+Shift switch language

Android : Shift+Space key switch language

Technical Specifications

Keyboard size: 304.09 x 97.79 x 6.1 mm (open) 152 x 100 x 20 mm (folding)

Touchpad size: 132.3 x 61 mm

Key working current: < 4 mA

Touchpad working current: 15 mA

Working distance: 10 m

Lithium battery capacity: 140 mAh

Working voltage: 3.7 V

Charger specifications: 5V --- 1A or 2A

Weight: 274 g

Standby current: < 0.65 mA

Sleep current: 27 μA

Sleep time: Ten minutes

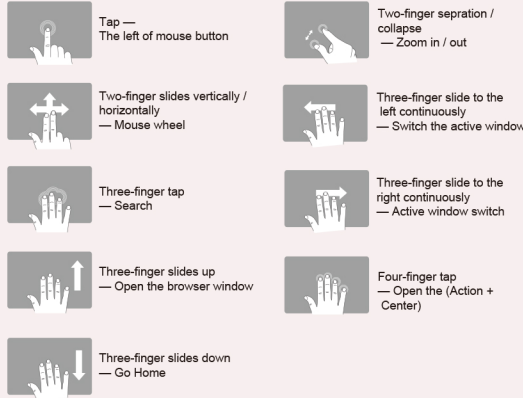
Awaken way : Press key

Low Voltage Indication : When the voltage is below 3.3 V, red light twinkles.

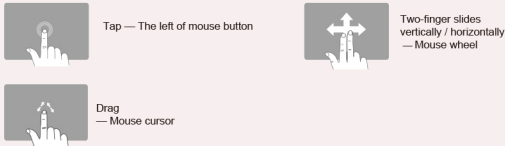
Charging : Indicator light will be on green, after fully charging, the light crush out.

Low Voltage Indication : When the voltage is below 3.3 V, red light twinkles.

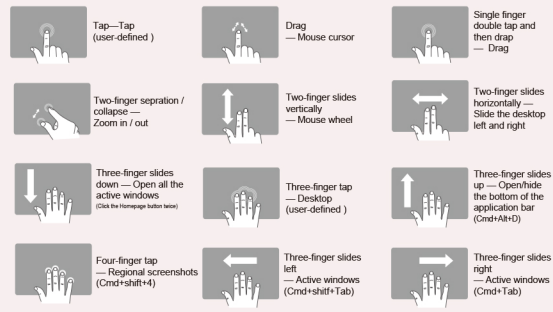
Touchpad function description (Windows10), must be switched to Windows system



Touch pad function description (Android), must be switched to Android system



Touch pad function description (iOS 13.4.1 and above), must be switched to iOS system



User-defined:

Settings - Auxiliary Functions - Touch - Auxiliary Touches - Device - Click the keyboard's pairing name, and then customize the function of 'single finger,Three-finger'.

Multi-channel connection

- When connecting the first device, first press Fn+ ❶ and then press Fn+C to start the connection.
- Before connecting the second device, press Fn+ ❷ once, then press Fn+C to start the connection.
- Before connecting the third device, press Fn+ ❸ once, then press Fn+C to start the connection.
- To use multiple devices at the same time, press Fn + ❶ / ❷ / ❸ to switch to the connected devices freely .

Troubleshooting

Please contact the after-sales service.

Copyright

It is forbidden to reproduce any part of this manual without the permission of seller.

Safety instructions

Do not open or repair this device, Do not use the device in a damp environment. Clean the device with a dry cloth.

Warranty

The device is provided with one-year limited hardware warranty from the purchase day.

Keyboard Maintenance

- Please keep the keyboard away from liquid or humid environment,saunas, swimming pool, steam room and don't let the keyboard get wet in the rain.
- Please don't expose the keyboard at too high or too low temperature condition.
- Please don't put keyboard under sun for a long time.
- Please don't put keyboard close to the flame, such as cooking stoves,candles or fireplace.
- Avoid sharp objects scratching products, timely to recharge products to ensure the normal use.

FAQ

- The tablet PC can't connect the BT keyboard?
 - At first check the BT keyboard is into match code state, then open the table PC Bluetooth searching.
 - Checking the BT keyboard Battery is enough, the battery low is also lead to can't connect, you need charge.
- The keyboard indication light always flashing when use?

Keyboard indication always flashing when use, is means the keyboard will be no power ,please charge the power as soon as possible.
- The table PC display BT keyboard is disconnect?

The Bluetooth keyboard is not used for a period of time, the device will automatically enter the sleep state in order to save power. Press any key on the keyboard to wake up, and the Bluetooth connection will be automatically restored.

Warranty Card

User information

Company or personage full name _____

Contact address _____

TEL _____ Zip _____

The purchased product name and model NO. _____

Purchased date _____

This reason due to the product broken and damage is not include on the warranty.
(1) accidents, misuse, improper operation, or any unauthorized maintenance, alteration, or disassembly;
(2) improper operation or maintenance, violation of product instructions or improper connection of power during use;
(3) Or use consumables (such as spare batteries) that are not provided by the company but applicable laws Except where such restrictions are prohibited.

