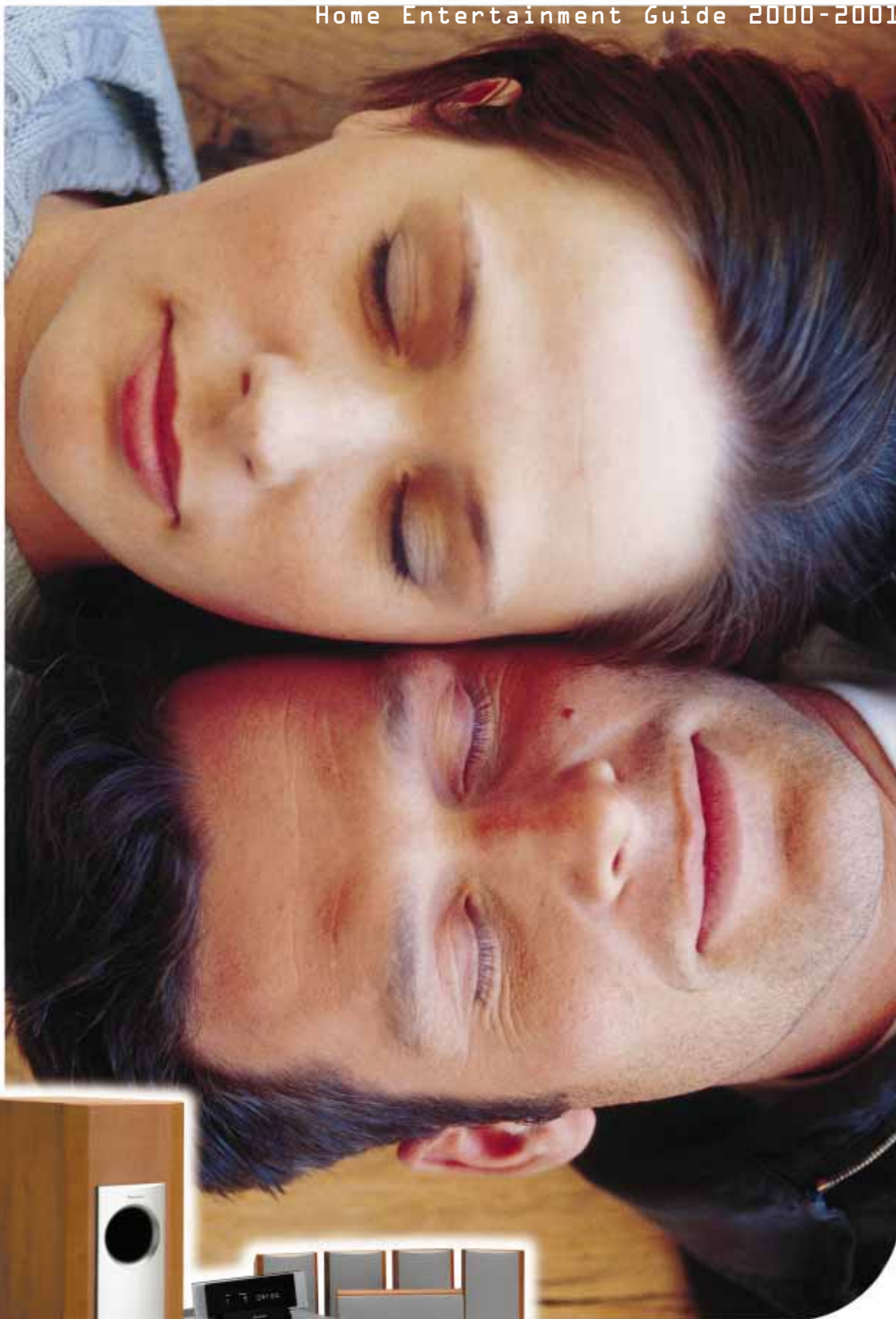


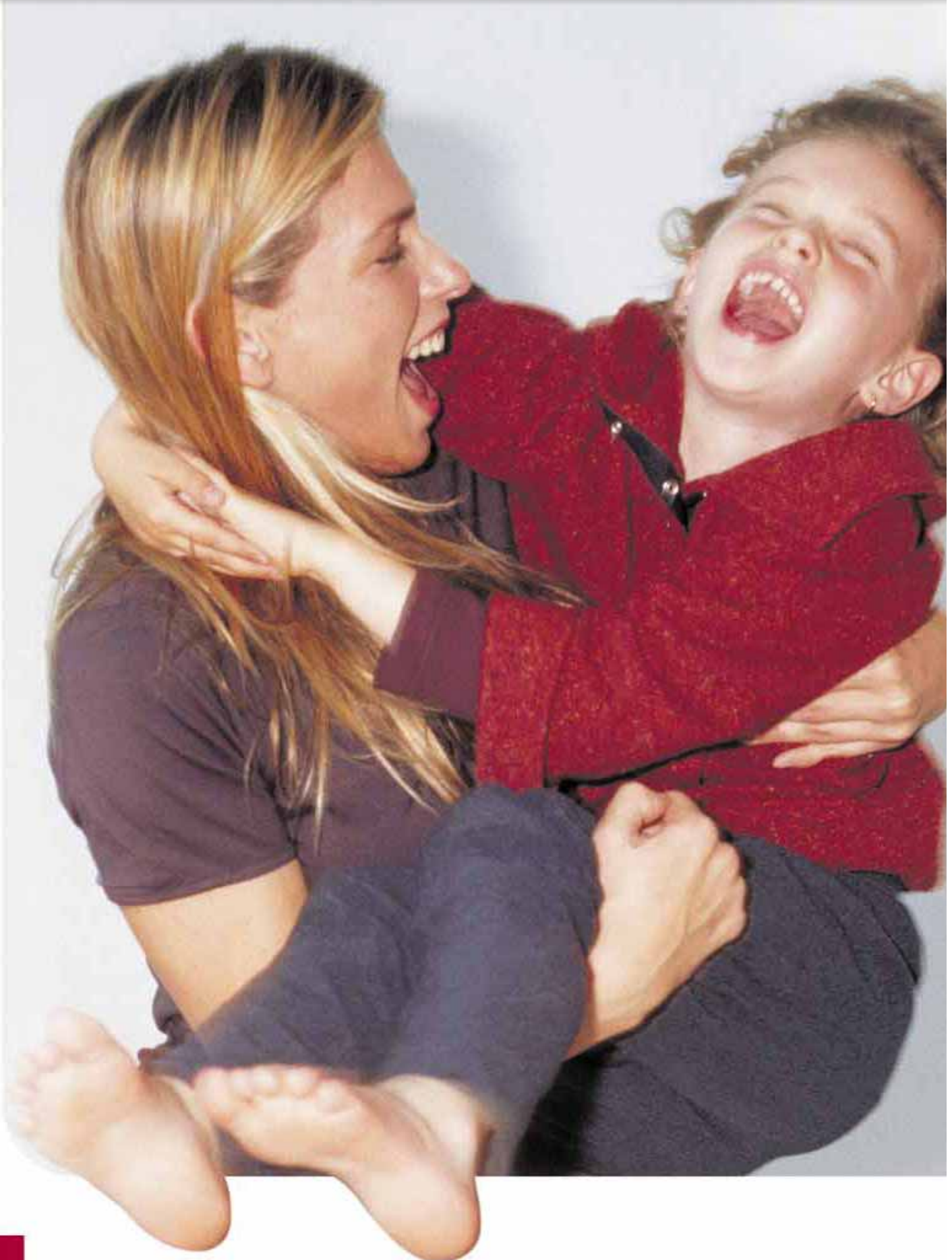
Pioneer

Home Entertainment Guide 2000-2001



Your Life. Your Choice. Your Fun.

Pioneer Home Entertainment





Dynamical DVD Reality.

DIGITAL HOME CINEMA >>> 4 > 21



Piece by Piece.

HI-FI COMPONENTS >>> 22 > 35



Look. Listen. Live.

NS SERIES >>> 36 > 41



Hip and Happening.

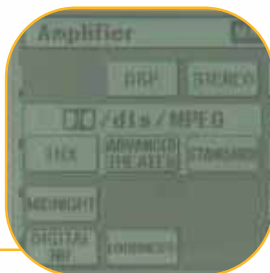
HI-FI SYSTEMS >>> 42 > 47

LIVE YOUR LIFE TO THE FULLEST. ENJOY YOURSELF AND LET YOUR FEELINGS SHOW. Laugh OUT LOUD AT COMEDY, Cry AT GREAT DRAMA, FEEL THE Adrenalin-Rush OF SPORTS AND GET Goosebumps WHEN YOU HEAR THE MUSIC YOU LOVE. PIONEER HAS SOMETHING FOR EVERYONE: FROM INDIVIDUAL HI-FI COMPONENTS TO FULL-FLEDGED, DIGITAL HOME CINEMA SYSTEMS. RAZOR-SHARP TECHNOLOGY, STUNNING DESIGNS AND OPTIONS ENOUGH TO PLEASE EVERYONE. IF YOU ARE LOOKING FOR INSPIRATION, EMOTION, Passion AND SIMPLY INCOMPARABLE HOME ENTERTAINMENT, YOU HAVE FOUND IT IN PIONEER. Life is too short to waste your free time.

Pioneer

Your personal Home Cinema Style





PIONEER'S Digital Home Cinema Systems bring the total movie experience into your living room thanks to excellent DVD picture quality and full surround sound — the peak of entertainment possibilities. Something for everybody from the liveliest live film action, through the most stirring musical sounds, to sports coverage so up close and personal that you'll feel like you've had a work-out. It is so real that it is like having an entire cinema, concert hall and stadium all-in-one in your living room.

Whether you are looking for the entire home cinema experience in one stylish package or want to develop your system step-by-step, Pioneer offers numerous options and components, including market leading DVD expertise. Pioneer's wide range of leading DVD solutions fit anywhere, anytime and anyplace. Please see pages 8 and 9 for more information.

Digital Home Cinema



NS-DV55
DIGITAL HOME
CINEMA SYSTEM



Cinema you can Live in



The latest in multimedia digital technology, DVD, guarantees second-to-none picture quality and sound. The digital picture is twice as sharp as standard VHS videotape. Home cinema ready, DVD enables surround sound as impressive as in the cinema, right in your home. The media itself is more durable than VHS tape and doesn't need to be rewound. Plus DVD is packed with useful features – multiple language and soundtracks and subtitles, support for various audio encoding technologies such as DTS and Dolby Digital, multiple camera angle viewing selection, parental blocking, return-to-pause and view-per-chapter and support for both virtual or digital surround sound. With all of this, DVD is clearly the future.



A new arrival on the multi-channel, multimedia audio format scene, DTS 5.1 channel playback encoding technology is rapidly gaining popularity thanks to its dynamic sound impact that flies at the listener from left, right and centre surround sound speakers. Open up the doors of digital home cinema and super surround sound with any Pioneer DVD player and A/V amplifier/receiver* because they can handle DTS encoded discs.

*Except VSX-409RDS



The current surround sound quality encoding standard, Dolby Digital means movie theatre sound performance for your home cinema. Its 5.1 channel audio sound compression technology wraps you in sound. The front left and right, centre, rear left and right speakers span frequencies from 20Hz – 20kHz and there is a dedicated low frequency channel for extra sound clarity. Extra features mean not only stunning soundtracks but also additional language tracks on one disc. And Dolby Digital has gone a step further with THX Surround EX, a co-development between Dolby Digital and THX, which adds another audio channel to the soundtrack behind the listener, meaning more depth and localisation for even more sound perfection.

NS-DV55 HOME CINEMA SYSTEM



LIVING CINEMA IN YOUR LIVING ROOM, THE PIONEER NS-DV55 SYSTEM IS DEFINITELY THE ALL-IN-ONE STYLISH DESIGN SOLUTION YOU ARE LOOKING FOR. ITS VARIOUS INPUT TERMINALS MAKE IT EASY TO CONNECT YOUR OTHER FAVOURITE COMPONENTS. AND WITH A CHOICE OF BLACK* OR WARM WOOD-TONE SPEAKERS, IT WILL CERTAINLY SLIDE RIGHT INTO ANY INTERIOR. SLEEK, COMPACT, AND CD-R COMPATIBLE, OPT FOR A HOME CINEMA STATEMENT PACKED WITH EXCITING FEATURES LIKE DTS SURROUND SOUND AND DOLBY DIGITAL. ALL THAT CAN BE SAID IS THAT THE NS-DV55 MEANS MORE DIGITAL HOME CINEMA SURROUND SOUND – FROM YOUR FAVOURITE SOFA.

* NS-DV55-K

XV-DV55



DISPLAY + REMOTE CONTROL

The perfect combination of function and design, a separate ice blue display adds the finishing touch.

The remote control with its presets and colour illuminated keys ensures easy operation. Plus its learning feature means that you can teach it to operate a multitude of remote controlled products.

30 W x 5 + 50 W



DVD/VCD/CD/TUNER

Sophisticated design and sleek curves define the understated style of this home cinema system. Hidden inside the central unit are the Pioneer DVD/VCD/CD player and RDS tuner, convenient digital input and output connections for hooking up a TV, VCR, CD recorder or a MiniDisc player. In addition — the separate system display plus Dolby Digital and DTS sound capability...



S-DV55ST-Q + S-DV55SW-Q

WOOD-TONE SATELLITE SPEAKERS + WOOD-TONE SUBWOOFER/AMPLIFIER

30 W x 5 + 50 W

You won't even notice them... until you turn on the surround sound. You can choose black or a wood-toned finish to complement your home.

The minimalist satellite speakers combine with the centre speaker unit to produce five times 30 Watts of output for pure home cinema pleasure.

The sleek subwoofer, housing the system's 5.1 channel surround amplifier, completes the surround sound experience. Place it where you want, sit back and enjoy all the thrill and excitement of the cinema in the comfort of your home.



S-DV55ST-K + S-DV55SW-K

BLACK SATELLITE SPEAKERS + BLACK SUBWOOFER/AMPLIFIER

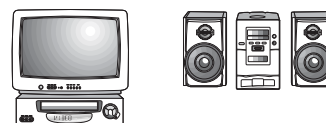
30 W x 5 + 50 W



Build towards the Ultimate in Digital Home Cinema

A HOME CINEMA SYSTEM DOES NOT MEAN STARTING OVER. SIMPLY BEGIN WITH WHAT YOU HAVE: YOUR VCR, TV SET AND HI-FI SPEAKERS. THE FIRST STEP IS TO ADD A DVD PLAYER FOR DRASTICALLY IMPROVED IMAGE QUALITY AND DIGITAL SOUND. PLUS DVD PLAYERS COME IN MANY DIFFERENT FORMS – SUPER COMPACT PORTABLE PLAYERS TO TAKE ANYWHERE, STANDARD COMPONENT UNITS AND EVEN SLEEK DESIGN MODELS. YOU WON'T BELIEVE YOUR EYES! NEXT, YOU'LL WANT TO ADD A RECEIVER OR AMPLIFIER FOR VIRTUAL SURROUND SOUND THROUGH YOUR HI-FI SPEAKERS. CINEMA REALISTIC, IT IS BETTER THAN THE REAL THING. FINALLY, SPLURGE ON A 5.1 SURROUND SOUND SYSTEM – SIX SPEAKERS IN TOTAL FOR COMPLETE DOLBY DIGITAL OR DTS WRAP-AROUND SOUND – THE ULTIMATE IN HOME ENTERTAINMENT.

Most European homes have separate stereo and TV/VCR installations.



STEP 1

To start, add a DVD player or a portable DVD unit to your TV/VCR combination. You can create a surround sound effect with your TV stereo speakers if your DVD player is equipped with a Virtual Surround decoder. Besides outstanding image quality and superb sound, DVD lets you view films in various languages with a selection of soundtracks and enjoy other easy and convenient features, such as viewing per chapter and movie angle selection.



STEP 2

The next step, adding a Pioneer A/V amplifier or receiver, is the central component in any home cinema experience. The A/V amplifier or receiver connects all the units, amplifying any sound source in the system – TV, DVD, CD, MiniDisc... A Pioneer A/V amplifier or receiver not only provides powerful sound, but you also can connect a variety of image sources, such as a video camera (easy if your A/V amplifier or receiver has a front panel input).



STEP 3

The final touch, the 5.1 channel surround sound speakers, completes the ultimate home cinema experience. The two front and two rear speakers, one centre speaker above the monitor or TV and one subwoofer for low frequencies will wrap home viewers in digital surround sound – just like in the movie theatre.



STEP 4

NS-DV55 DESIGN HOME CINEMA SYSTEM

Or maybe you're feeling like a new sophisticated system in one package? The NS-DV55 is definitely the right direction and a super stylish way of experiencing home cinema. The entire package includes a stylish DVD player with built-in RDS tuner, 5 corresponding black or wood-tone satellite speakers and a subwoofer – everything you need for the best in digital surround sound.





pioneer Recommends



DON'T MISS OUT ON THE ENTERTAINMENT OPTIONS YOU DESERVE. PIONEER KNOWS AUDIO... AND VIDEO... AND EVERYTHING IN-BETWEEN. WITH PIONEER'S RECOMMENDED COMBINATION PACKAGES, YOU BENEFIT FROM EXPERT ADVICE ON HOW TO MIX AND MATCH DIFFERENT COMPONENTS TO GET THE BEST POSSIBLE SOUND, PICTURE, STYLING AND TECHNOLOGY. MULTI-COMPONENT PACKAGES WITH A SINGLE PURPOSE: TO GIVE YOU THE TOTAL DIGITAL HOME CINEMA EXPERIENCE.

1: DESIGN SOLUTION (DOLBY DIGITAL + DTS)



NS-DV55/NS-DV55-K

If you can't wait for the ultimate digital home cinema experience, why not consider the NS-DV55, a very stylish way of experiencing home cinema? The entire package includes a stylish DVD player with built-in RDS tuner, 5 corresponding black or wood-tone satellite speakers and a subwoofer – everything you need for the best in digital surround sound.

See page 7 for the full story.



2: DOLBY DIGITAL + DTS PACKAGE

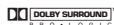


DV-535 + VSX-609RDS + S-V30 (= S-F30 + S-CR30 + SUBWOOFER S-W80S)

A great home cinema system with Dolby Digital and DTS surround sound, this package starts with the quality easy-to-use DV-535 player and the highly functional VSX-609RDS A/V receiver with 5.1 channel input. Add the wood-tone satellite S-F30, S-CR30 speakers and a S-W80S subwoofer to bring cinema to your home in one simple step.



3: DOLBY PRO LOGIC PACKAGE



DV-535 + VSX-409RDS + S-F30 + S-CR30

Or maybe a Dolby Pro Logic system is more your style. Then this starter package is perfect. It starts with the quality DV-535 player and the VSX-409RDS A/V receiver with 5.1 channel input. The compact S-F30 and S-CR30 speakers add quality Dolby Pro Logic sound to the system.



Dynamically Digital DVD Reality



DVD AUDIO DVD-Audio is a brand new, high quality multi-channel audio format offering even better quality than CDs. This means superb surround sound, longer playing time and the same type of interactivity found on DVD-Video.

A dual layer DVD-Audio can play at least 2 hours of full surround sound audio and 4 hours of stereo audio.

Pioneer is planning to launch a top of the line DVD player that can play DVD-Audio early next year. Pioneer guarantees the best sound in your future.



DVD PLAYERS



GUARANTEED FIRST-CLASS PICTURE AND SOUND QUALITY FROM THE LEADER IN DVD TECHNOLOGY. ENJOY A DIGITAL PICTURE MORE THAN TWICE AS SHARP AS STANDARD VHS VIDEOTAPE ALONG WITH IMPRESSIVE CINEMA-STYLE SOUND. PIONEER DVD PLAYERS EVEN PLAY BACK YOUR OWN CDs AND OFFER FULL CD-R PLAYBACK COMPATIBILITY THANKS TO THE TWIN-WAVE LASER PICK-UP. YOU'VE ALWAYS EXPECTED HIGH QUALITY VIDEO AND SOUND FROM PIONEER. NOW YOU CAN HAVE THE OUTSTANDING VIDEO QUALITY AND SUPREME AUDIO QUALITY, PLUS BENEFITS YOU COULD ONLY DREAM OF: MULTIPLE LANGUAGE AND SOUNDTRACKS AND SUBTITLES, SUPPORT FOR VARIOUS ENCODING TECHNOLOGY SUCH AS DTS AND DOLBY DIGITAL, MULTIPLE CAMERA ANGLE VIEWING SELECTION, PARENTAL BLOCKING, RETURN-TO-PAUSE AND VIEW-PER-CHAPTER AND SUPPORT FOR BOTH VIRTUAL OR DIGITAL SURROUND SOUND AND MUCH MORE.

DON'T FORGET THAT YOU CAN ENJOY PIONEER DVD ANYWHERE AND ANYTIME, THANKS TO PIONEER'S DIVERSE RANGE OF DVD PLAYERS INCLUDING PORTABLE DVD PLAYERS AND AN IN-CAR DVD CHANGER MODEL.



DV-737

DOLBY DIGITAL DTS VIRTUAL DOLBY DIGITAL PAL/NTSC SR

Top of the line DVD, this clean-cut unit equally delivers high quality images and the purest sound. We know that sound is important to you, which is why this forward thinking DVD player has separately designed audio circuits that perfectly complements its video enhancing features. Combined, this means pure perfection in audio and visual design... and it looks good, too.

Also available as DV-737-K with black finish.



DVL-919E

DOLBY DIGITAL AC-3 OUT DIGITAL DTS VIRTUAL DOLBY DIGITAL BOTH SIDE PLAY PAL/NTSC TruSurround SRS (SR) Hi-bit LITHIUM ION BATTERY

The ultimate combination player for DVD/LD/CD and VCD. Enter into the fabulous DVD world and still play your Laser Discs. Support for all your existing media is what you need. Provided with DTS and Dolby Digital output, it even allows you to enjoy virtual surround sound.



**NEW****DV-636D**

Both Dolby Digital and DTS! This DVD player is heaven for real movie buffs. With its built-in Dolby Digital and DTS decoder, this DVD player can handle all the latest audio-encoding technology, which means more cinema effects without the extra equipment.

**NEW****DV-535**

Entering the world of DVD? This player is the perfect starting point. Cool and convenient, this easy-to-use model comes with a simplified remote control. And there are optical and coaxial digital outputs to enjoy pure digital home cinema sound.

**NEW****DV-530**

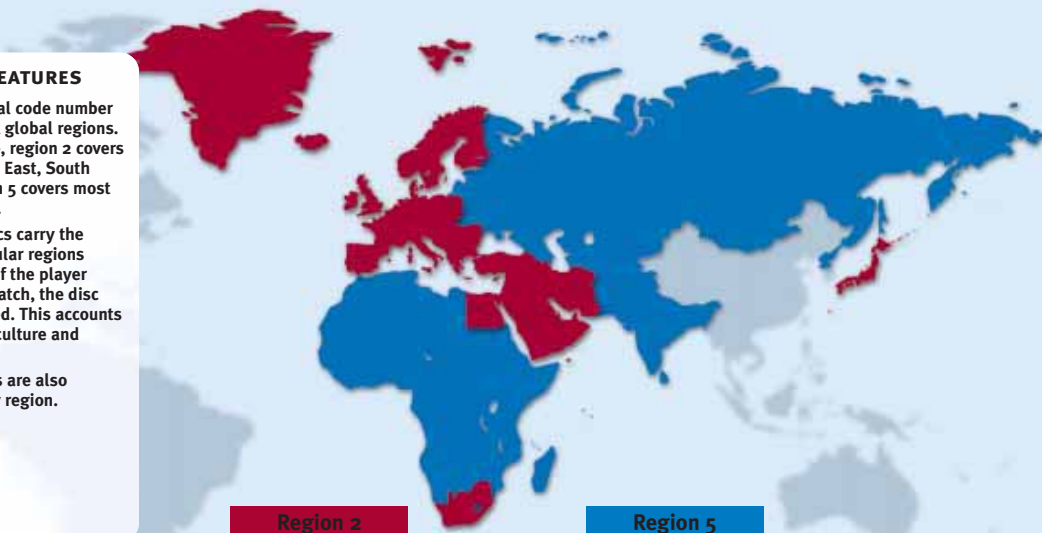
Or maybe you want to follow the new trends or match existing units and go with silver components for your entertainment centre? Then this DVD player is the answer. Just click the user friendly remote control button and fly into the DVD world of high quality image and theatre-like sound.

BUILT-IN SECURITY FEATURES

DVD players carry a regional code number corresponding to one of six global regions. For example as shown here, region 2 covers most of Europe, the Middle East, South Africa and Japan and region 5 covers most of Africa, the CIS and India.

Additionally, most DVD discs carry the respective codes for particular regions where viewing is allowed. If the player code and the disc do not match, the disc will not be able to be played. This accounts for differences in regional culture and parental guidance.

Region code-free DVD discs are also available for playing in any region.



Region 2

Region 5

Portable DVD PLAYERS

Anytime, Anywhere!



190 mm

PDV-LC10

DOLBY DIGITAL DTS Hi-Fi Hi-RES VIDEO LINK COMPATIBLE PAL/NTSC 5.1

Truly portable DVD with a 7.0-inch wide LCD display. Take it on the road and enjoy 3.5 hours playback or plug into any TV or A/V amplifier/receiver at home. Compatible with DTS and Dolby Digital, of course.



FOR MOVIE ENTHUSIASTS, WHAT COULD BE BETTER? DVD AT HOME OR ON THE GO. FEEL LIKE STAYING IN? NO WORRIES. JUST CONNECT YOUR DVD PORTABLE UP TO ANY TV, KICK OFF YOUR SHOES AND PUT YOUR FEET UP. FEEL LIKE GOING OUT? WITH A PORTABLE DVD PLAYER THIS SLIM AND LIGHTWEIGHT, YOU CAN ALSO HAVE MOVIES "TO GO" — TO A PARTY, TO A FRIEND'S HOUSE, ON VACATION... PIONEER'S PDV RANGE IS READY TO GO ALONG FOR THE RIDE.



190 mm



142 mm

18 mm

PDV-10

DOLBY DIGITAL DTS Hi-Fi Hi-RES VIDEO LINK COMPATIBLE PAL/NTSC 5.1

DTS and Dolby Digital output together in a sleek, super designed space-saving DVD unit. Extremely thin (DVD jacket sleeve) and light (only 370 g!), it will give you many years of full home cinema entertainment. Simply plug it into any TV and A/V amplifier/receiver for pure DVD pleasure.



EASILY CONNECTED

With its easy connection, just plug your Pioneer portable DVD player into a TV or A/V monitor in any room to watch your favourite films. This new technology offers you second-to-none picture quality and sound including S-video output and state-of-the-art digital audio transfer.

PURELY PORTABLE

Why not slip it into your bag so you'll have your Pioneer DVD on that next trip? Feel free to take your new DVD player wherever you want, the sub-notebook format will fit even in the smallest bag.



EVEN IN YOUR CAR!

Dreaming about a movie right in your car? Pioneer already has it — a car A/V system that includes a multi-DVD player, easy-to-mount screens and complete 5.1 channel surround sound.

For more information, please check out "www.pioneer-eur.com" or ask your local Pioneer car audio dealer.



For full product features and specifications, please see pages 49 to 50.



Digital Home Cinema

DIGITAL HOME CINEMA

Turn it Up!

Digital Home Cinema Sound



Technology is taking off and the home cinema audience is most certainly listening. Thanks to Lucasfilm's THX division, DVD home cinema audiences can enjoy similar high-tech sound effects found in movie theatres. The THX label guarantees that the system can handle 5.1 channels for quality wrap-around surround sound performance.



Going a step further, THX joined forces with Dolby Laboratories to develop the THX Surround EX system. This innovation adds an extra Surround Back channel to the soundtrack, meaning that one additional sound path is decoded and actually flies right over the listener. Sound surrounding you — plus sound flying right over your head. Now, that's realistic.

DTS-ES

Early this year, DTS introduced a new cinema decoder: DTS-ES. Using low data compression and a high data transfer rate, DTS-ES adds an additional sound channel to digitised films, allowing filmmakers to be even more creative with sound.

This translates to better special effects that truly surround the audience like never before. The third channel flies over the head of the viewers, putting them right in the middle of the action. Used now only in cinemas, this exciting technology will most certainly be implemented in future DVD home cinema products.





A/V AMPLIFIERS & Receivers



AMPLIFIERS AND RECEIVERS ARE KEY TO ANY HOME CINEMA SYSTEM. THIS IS WHERE IT HAPPENS, WHERE THE CINEMA SOUND EXPERIENCE IS DECODED AND TRANSFERRED TO THE SPEAKERS IN YOUR LIVING ROOM. PIONEER HAS HI-TECH AMPLIFIERS AND RECEIVERS FEATURING DOLBY DIGITAL AND DTS DECODERS OR EVEN SUPPORTING THX SURROUND EX. WITH SOUND THIS GOOD, YOU DEFINITELY BEGIN TO FEEL LIKE YOU'RE INSIDE THE MOVIE.

VSA-Eo8

NEW



130 W x 5

What you have been dreaming of... exists. THX Ultra certified, this A/V surround sound processing amplifier is packed with every feature imaginable including DTS-ES and THX Surround EX decoders for the ultimate digital home cinema sound experience. This new model has more connection possibilities, including component video in/out for the highest quality A/V installations, while audio and video circuits are shielded in separate chambers for pure multi-channel sound. Perfect for movies and music!



The feature-packed remote control unit offers an improved user interface, including a preset recall guide, item memo and key rename possibilities. Its lock switch prevents activation by mistake.

VSX-909RDS-G

NEW



110 W x 5

This top-of-the-line, feature-packed A/V receiver has everything, and we mean everything you'd expect: THX Ultra certification, THX Surround EX and DTS-ES, plus an RDS tuner. On top of this, thanks to top-of-the-line THX Ultra certification, this quality system produces 110 watts of quality cinema surround sound with 7.1 channels in/out — perfect even in larger rooms.

Also available as VSX-909RDS with black finish.



NEW

VSX-859RDS



100 W x 5

This A/V receiver is ready for what the future brings. Completely versatile, this unit can handle the latest and future digital sources — up to 7.1 channels in/out. Plus, there's THX Surround EX and it's DTS-ES compatible. Its THX Select certification makes it the perfect choice for your digital home cinema centre, today and tomorrow.

Also available as VSX-859RDS-G with gold finish.



NEW

VSX-839RDS



100 W x 5

THX Select certified, this A/V receiver is a top quality "5.1" surround system. Universal DVD player ready, it has a 5.1 channel input for stereophonic surround sound. And it can decode Dolby Digital and DTS encoded discs for a great digital home cinema experience.



7.1 Channel Surround ADD-ON AMPLIFIERS

NEW



M-10X

120 W x 2

You're probably thinking THX Surround EX, right? This is why we've designed this golden amplifier specifically to enhance the additional 2 Surround Back channels, in the THX Surround EX system. And the gold finish perfectly matches the other components — VSA-Eo8 and VSX-909RDS-G. Just the extra touch you'd expect.



A-509R

90 W x 2

If you are looking for a black model to do the same job of amplifying the extra channel which creates the THX Surround EX sound, you might want to consider the A-509R. This model can be used with the VSX-909RDS and VSX-859RDS.



A/V AMPLIFIERS & Receivers

VSX-709RDS



80 W x 5

Here's cutting-edge technology in an A/V receiver: Dolby Digital and a DTS decoder plus a front A/V input with S-video and a digital output – all combined with an RDS tuner.



VSX-609RDS



80 W x 5

This A/V receiver with RDS tuner incorporates Dolby Digital surround sound and DTS superior sound localisation. It also features a 5.1 channel input for multi-channel audio like future DVD-A players.

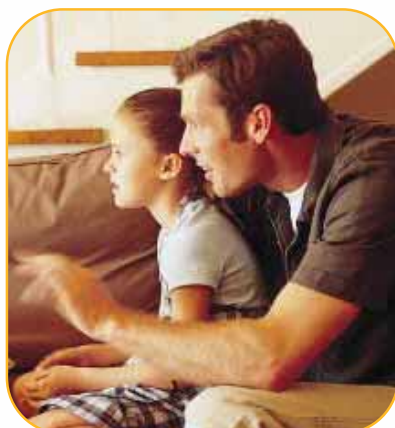


VSX-409RDS



80 W x 5

Looking for Dolby Pro Logic surround at an affordable price? Then this A/V receiver with its 5.1 channel input is designed for you. And it's a perfect partner for the DV-636D DVD player which has built-in Dolby Digital and DTS decoders.



For full product features and specifications, please see pages 51 to 53.



Digital Home Cinema

Truly, three dimensional Sound



WRAP-AROUND SOUND

Wrap yourself in the most overwhelming surround sound reproduction and be amazed how sound can colour your home cinema experience. So pure and realistic, it makes you feel like part of the action. Dolby Digital and DTS – they paint your walls and ceilings with sound.

A/V SPEAKERS



A SUPERB SYSTEM DESERVES HIGH PERFORMANCE SPEAKERS. THE QUALITY OF PIONEER SPEAKERS LETS YOU ENJOY THE FULL SPECTRUM OF SOUND. BACKING UP BRILLIANT COMPONENTS, THE SUPERB SUBWOOFERS, AND ALL FRONT, CENTRE AND REAR SPEAKERS ARE DESIGNED TO DELIVER THE BEST POSSIBLE SOUND. YOU'LL HEAR ACTION MOVIE EFFECTS THAT MAKE YOU WANT TO RUN FOR COVER, DRAMATIC MUSICAL SCORES THAT PUT YOU IN THE CENTRE OF THE AUDIENCE, MUSICAL ARIAS THAT STIR THE SENSES, AND SPORTS SO LIVE YOU'LL FEEL LIKE CHEERING.

THE ENTIRE LINE OF PIONEER SPEAKERS PRESENTED HERE IN PACKAGES IS ALSO AVAILABLE SEPARATELY. SO FEEL FREE TO BUY A FABULOUS NEW SET FOR YOUR BRAND NEW DIGITAL HOME CINEMA EXPERIENCE OR JUST ADD THE REAR OR CENTRE SPEAKERS NEEDED TO CREATE GREAT 5.1 CHANNEL SURROUND SOUND.



S-V59T

100 W (front), 100 W (rear, centre)

Enjoy the full sound spectrum through 3 powerful cone woofers in the stylishly designed front speakers. Feel the dynamism of the movie soundtrack, supported by superb centre and rear satellite speakers. The S-V59T consists of S-H509V (floorstanding front speakers) and S-CR59 (centre and rear satellite speakers).



S-V59

100 W (satellite), 110 W (subwoofer)

Feel the real surround sound through the 5 sleekly designed satellite speakers, which blend into any interior thanks to their small size and warm wood-tone finish, and high performance subwoofer with built-in amplifier. The S-V59 consists of S-F59 (front satellite speakers), S-CR59 (centre and rear satellite speakers) and S-W80S (subwoofer).



S-V39T

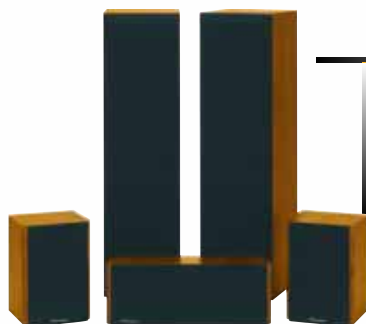
80 W

Two cone woofers on the front speakers supported by centre and rear speakers will envelop you with the true digital home cinema feeling. With black finish to match your existing components. The S-V39T consists of S-H309V (floorstanding front speakers) and S-CR39 (centre and rear satellite speakers).

S-V39

80 W

Compact size for subtle and easy placement and superb sound – all at an affordable price. This complete satellite speaker system brings intense surround sound to anyone considering the digital home cinema experience and its passive subwoofer means that an extra amplifier is not necessarily needed. The S-V39 consists of S-F39 (front satellite speakers), S-CR39 (centre and rear satellite speakers) and S-W39 (subwoofer).



S-V30T

80 W

The sleek look of the main units screams digital home cinema. The new compact rear units easily fit on any shelf or subtly mount on the wall. And looks aside, these 2-way speakers add outstanding audio performance and sound quality to any home entertainment system. The S-V30T consists of S-H210V (tall boy bookshelf front speakers) and S-CR30 (centre and rear satellite speakers).

Note: The S-H210V can be replaced by the S-H309V-W (floorstanding front speakers).

NEW

NEW

S-V30

80 W (satellite), 110 W (subwoofer)

Stylishly compact. The new design of these powerful home cinema speakers is ideal for shelf or wall placement. And add in the booming 110 watt active subwoofer for dynamic bass reproduction with your surround sound system. The S-V30 consists of S-F30 (front satellite speakers), S-CR30 (centre and rear satellite speakers) and S-W80S (subwoofer).



S-W80S

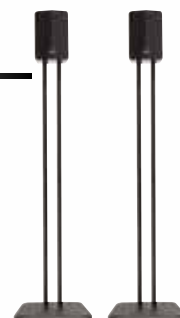
110 W

Tailored to the S-V59 home cinema speaker system, this power-packing 110 watt active subwoofer is also available separately, a perfect match with any hi-fi system. Connect it to an audio amplifier to reproduce the deepest bass on normal stereo speakers. Or use it in your surround sound system.

CP-HC10

SPEAKER STAND

Pioneer design goes beyond just the speakers. Perfect for any of the following satellite speakers — S-V59, S-V39, S-V707, S-V606 and the speakers in the NS-DV1. Place the speakers in this stylish stand, forget about drilling holes in the wall and hide the cables in the stand itself for total flexibility and style.



picture Perfect Displays



PDP-502MXE

PAL/SECAM/NTSC

PLASMA DISPLAY PANEL

Pure style to the finest detail reaches a pinnacle with this super-thin, 50-inch diagonal plasma display panel. Delivering high resolution images in 16:9 format, this smooth screen is unquestionably the ultimate in colour, contrast and brightness.

STREAMLINED...

The thin, light design makes it easy to place the screen anywhere – on the wall, floor, a stand or even the ceiling.

BRIGHTER IMAGES, HIGHER CONTRAST

The Pioneer PDP-502MXE features a unique cell structure that emits light on the anode and cathode sides for 1.6 more illumination in total. True black stripes provide noticeably improved contrast and the waffle structure barrier ribs mean better pixel efficiency, outstanding brightness and improved clarity.

WIDE VIEWING ANGLE

Flat plasma screens offer a significant advantage over LCD and rear projection displays. With flat plasma, the phosphor-coated screen is stimulated directly. The image is not projected onto the screen. The plasma screen delivers an exceptionally wide viewing angle – more than 160° vertically and horizontally. Plus the brightness across the screen is virtually uniform.

OUTSTANDING COLOUR

Using 256 greyscale definition levels and 16.7 million colours, Pioneer plasma technology reproduces an incredible amount of sharpness and detail in its images for very realistic viewing.

FUTURE AND MULTIMEDIA COMPATIBILITY

This high definition XGA panel can process all types of signals – VGA, SVGA, XGA as well as SXGA and UXGA formats.

The PDP-502MXE can support various screen sizes and can reproduce PAL, NTSC, SECAM and HDTV. And its wide range of input/output terminals matches the vision of any digital home cinema system.



SD-T50W1

3-Line 1/3
Digital Comb Filter

PAL/SECAM/NTSC

PROJECTION TELEVISION

You won't miss a moment with this super-size 16:9 widescreen television. This 50-inch projection screen unit is loaded with options – worldwide multi-system reception, a built-in stereo amplifier, 2-way speakers and teletext decoder. Plus there's a handy remote control.



Hi-Fi

“À la Carte”





When you want to choose individual components, PIONEER comes through. High quality units with the latest features and technology plus performance compatibility all around. No set formulas, no limited menu of options — just endless possibilities. With quality you can depend on and components to meet your every hi-fi need, all you've got to do is choose. PIONEER has the quality and experience to offer a wide selection of speakers, headphones, cassette decks, MiniDisc, file-type CD changers, CD players and, best of all, CD recorders. Your system. Your way.

Hi-Fi Components



PDR-W839
3+1 CD RECORDER

Endless Possibilities with CD Recording



PDR-W839



Record from one to three CDs onto your own personalised CD. Just select the tracks you want to record and press the "Copy Start" button. It is easy! The new "Rec This" button automatically records the track you are listening to at the touch of a button and stops when finalised. The improved 2 x finalisation process and double speed dubbing enables fast recording. The front panel input connection for a keyboard makes creating and editing personalised CD Text a breeze.

Replacing the PDR-W739.



PIONEER'S PDR-W739 WON THE EISA EUROPEAN AUDIO RECORDER OF THE YEAR 2000-2001 AWARD.

For more details, please see pages 66-67.



3-TO-1 TECHNOLOGY

With a Pioneer CD recorder, you can build a music collection that reflects your own personal style in no time. Select the desired tracks from one to three CDs, press the "Copy Start" button and record your selections onto one CD. It's that easy to digitally record selections from three CDs to one. You'll never have to settle for a mass-produced compilation CD or struggle with complex programming ever again.



1 Insert the pre-recorded music CD or CDs.



2 Place the recordable disc in the CD recorder.



3 Choose the selections you want to record from up to 3 separate CDs. (Up to 60 or 74 minutes of total recording time.) Push 'Record' and get on with your life. When the recording is finished...



4 ...you have your own customised CD for playback over and over again!

CD RECORDERS

PDR-609

LEGATO LINK
CONVERSION

CD TEXT SR

NEW

COMPACT disc Recordable (RW) Rewritable Quality CD recording and playback at its finest — thanks to a 24-bit A/D converter and Legato Link Conversion. This technology includes double speed finalisation, analogue sync recording for easy vinyl or cassette recording and automatic level adjustment. Of course, there is CD Text display and input possibilities.



TAKE IT ANYWHERE

Takin' it to the street! ...or any place you want to be. Once you've recorded your compilation discs, take them anywhere you want to go. You can play them at home, on your PC, in the car, in your portable CD or DVD player, or at a party.



NEVER ENDING PARTY

Want to expand your possibilities? Then hook up your CD recorder to a File-Type CD player and select from up to 301 CDs. Build a unique library of compilation CDs. CD recording — you're on your way.



CD TEXT

CD Text is a neat new feature found on the PDR-W839, PDR-609 and PDR-F10. Add CD titles, track titles and artist names to the audio CD. CD Text reads and records the information on the disc itself, making it easy to find the track or artist you want to play later.

RDD-80B

CD-RECORDABLE AUDIO 80 MIN.

A high quality recordable audio format for applications requiring maximum capacity — greatest hits compilations, classical music special editions, concerts... .



RDD-60B

CD-RECORDABLE AUDIO 60 MIN.

For the most demanding hi-fi listeners: high recording and playback fidelity from this 60 min. Recordable Compact Disc. The lower information density improves the recording quality.



RDD-74B

CD-RECORDABLE AUDIO 74 MIN.

Reach the highest performance with a Pioneer CD recorder.



RDW-74

CD-REWRITABLE AUDIO 74 MIN.

Make your own musical mock-up with this 74 min. Rewritable Compact Disc. Compatible with audio recorders carrying the symbol identification.



COMPACT disc Recordable (RW) Rewritable For Consumer or For Consumer Use: Recording is not possible on a CD-R/CD-RW disc without the above marks, which means it is a disc for professional use.

Compatible with SCMS (Serial Copy Management System): SCMS makes possible digital direct CD-R recording of CD, MD or DAT audio sources. However, such CD-R recordings cannot be used as source material for digital re-recording (in order to restrict digital dubbing).

CD RECORDERS

CD-R "3-to-1" in a System

50 W x 2

X-MR7



A complete system that is ready to record. You have a 3 CD changer, an easy-to-use CD recorder, an AM/FM tuner with RDS, and two 50 watt speakers. Just plug it in and create your own compilation CDs. And there is even a front optical connection for your MiniDisc player!



NEW

PDR-F10

CD TEXT SR



Perfectly matched, this CD recorder adds an extra element of art, and recording capabilities, to your sleek NS-F10 CD system. The PDR-F10 records only in combination with the XC-F10.



NS-F10 with PDR-F10



PDR-L77

SR



Another perfect match, when considering the NS-8 or NS-9. This CD-R component lets you record in style.



NS-9 with PDR-L77



For full product features and specifications, please see pages 55 to 56.

File-Type CD PLAYERS

Your own Private Jukebox

NEW



WITH FILE-TYPE CD PLAYERS THAT OFFER YOU THE POSSIBILITY OF 301 CDS IN A COMPACT SPACE, IT'S CLEAR THAT PIONEER DOESN'T BELIEVE IN LIMITING YOUR LISTENING PLEASURE. ENJOY THE REPRODUCTION OF THE ORIGINAL SOUND, MORE FAITHFUL THAN EVER BEFORE, THANKS TO LEGATO LINK CONVERSION. IT'S LIKE HAVING A JUKEBOX IN YOUR HOME — EXCEPT YOU CAN'T LEAN ON IT.

PD-F1009



With its unique loading roulette rack system and single loader, easily store 301 CDs in a surprisingly compact unit for immediate playing of your collection. A selection of listening modes, CD Text and CD-RW playback capability, low power consumption and Legato Link Conversion make this component an excellent choice for quality and convenient CD enjoyment.



PD-F1007



More than 301 CDs? No problem. This CD player is connectable to another 301-CD changer for a grand total of 602 CDs. Almost a month of continuous listening pleasure. Organise your collection using the custom filing system and input your text via a keyboard or the remote control.



PD-F958



Store up to 101 CDs in this compact CD player. Its single loader means a track within moments. It is easy to keep your favourite CDs organised using custom filing for up to 3 CD groups and the component can handle CD Text.



For full product features and specifications, please see page 57.

HI-FI COMPONENTS



File-Type CD PLAYERS



PD-F706



A compact unit, this rolling rack system stores 25+1 discs. Almost a full day of audio enjoyment. Plus you can program 24 tracks from 24 different discs for the perfect mix.



PD-F607



Just a bit smaller for easy placement, load this CD player with 25 discs and enjoy your favourite music continuously. You'll be surprised at its price tag as well as its features, which include CD Text.



Multi CD PLAYERS

PD-M603*



This CD player offers six disc capacity with excellent sound performance thanks to Pioneer's 1-bit DLC (Direct Linear Conversion) featuring a high speed and high density pulseflow D/A converter. With automatic digital level control, the sound level is automatically adjusted. Plus the 6 disc key on the remote lets you access any one of the six CDs directly.

* Only available in the U.K.



PD-M426*



Put sets of your favourite CDs in separate loaders and off you go. This multiple Compact Disc player stores 6 discs per loader and features anti-resonance and anti-vibrating design and last disc memory. Just press the remote to start playing your selection.

* This product is not available in the U.K.



PD-M406*



With a six disc storage capacity, this multi Compact Disc player offers superb sound with anti-resonance, anti-vibration design and last disc memory. A system remote terminal is also available.

* This product is not available in the U.K.



For full product features and specifications, please see page 57.

CD Players

Surpassing Expectations

CD PLAYERS HAVE BEEN AROUND FOR MORE THAN 15 YEARS NOW. HAVEN'T WE DONE EVERYTHING WE CAN WITH THEM? THERE'S NO END TO PIONEER'S INNOVATION. WITH HI-BIT CONVERSION AND LEGATO LINK CONVERSION, RECORDED SOUND IS RESTORED TO ITS ORIGINAL, STUDIO QUALITY. FLEXIBILITY AND INNOVATION ARE COMBINED TO CREATE CD PLAYERS THAT ARE LIGHTYEARS AHEAD OF WHAT THEY USED TO BE.

PD-So6*



Unquestionable quality. This is the ideal CD player for the most demanding listener. Every golden detail is aimed at exceptional sound reproduction. This includes the Pioneer Z-concept design that features extremely low digital signal transmission distortion thanks to its accurate transmission system, stable platter mechanism and acoustic damper tray mechanism which significantly reduce jitter noise inside and out. This CD player also offers Hi-Bit Legato Link Conversion S for exceptionally natural sound. And to top it off, there is also coaxial and optical digital output and an analogue or digital output selector.

* This product is not available in the U.K.



PD-S707*



Or would you prefer classic black? This top model features everything a demanding listener requires. Perfect digital audio sound is present thanks to Pioneer's Z-concept and anti-resonance and anti-vibration features. And it is easy to use with a convenient jog dial.

* This product is not available in the U.K.



PD-S507*



This quality CD player has a wealth of features like Legato Link Conversion, and exceptional quality for this price range thanks to the Pioneer Z-concept. This highly accurate transmission system, stable platter mechanism and acoustic damper tray mechanism significantly reduce jitter noise inside and out for the ultimate music enjoyment.

* This product is not available in the U.K.



PD-207



Easy-to-use, this CD player operates at a touch of a button. Its extremely affordable price tag makes it even more attractive.



Power Packed Pure Sound

Integrated AMPLIFIERS & Receivers

WHEN IT COMES TO AMPS AND RECEIVERS, PIONEER'S LINE-UP OFFERS SOUND OPTIONS THAT MAKE MUSIC SOUND BETTER THAN EVER. PIONEER AMPLIFIERS ARE WHAT THE DREAMS OF AUDIO LOVERS ARE MADE FROM — INNOVATIVE HIGH PERFORMANCE COMPONENTS WITH EXTRA FEATURES AND ADDITIONAL CONNECTIONS TO ALL TYPES OF SPEAKERS AND HOME ENTERTAINMENT SYSTEMS. AMPLIFICATION WITHOUT DISTORTION AND STABLE SOUND LOCALISATION LEAD TO WHAT YOU WANT: PURE SOUND.

A-607R



Packed with power – 120 watts + 120 watts DIN, this integrated amplifier pumps out pure sound with a superb low frequency range and exceptionally low noise thanks to the toroidal transformer. The high quality Direct Energy MOSFET circuit drives low impedance loudspeakers and its wide range linear circuit delivers clean hi-fi sound throughout the frequency range. Its symmetrical design adds to the perfect stereo sound.



Toroidal transformer

120 W x 2



A-509R



The new look of this 90 watt integrated amplifier brings powerful performance to any system. Its wide-range linear circuit means a wider frequency response and its short signal path translates to a pure natural sound. It can be combined with the black VSX-909RDS or VSX-859RDS to drive the surround sound back speakers for a full 7.1 THX Surround EX* experience.

* When in the Surround Back mode, the A-509R does not accept any remote control signals, including those from the main amplifiers, VSX-909RDS or VSX-859RDS.

90 W x 2



A-307R



The symmetrical construction of this 80 watt integrated amplifier brings perfect stereo sound to your ears. And the short signal path adds to the reality of the experience.

80 W x 2



NEW

A-209R



The new design features of this 60 watt integrated amplifier include a stabiliser for the transformer and chassis. Add this to the other features, such as a wide-range linear circuit and short signal path, for excellent sound performance.

60 W x 2



NEW

A-109

The new design of this 40 watt integrated amplifier adds a stabiliser for the transformer and chassis. And its symmetrical design results in excellent stereo imagery.

40 W x 2



SX-209RDS



Less is more. This RDS quartz-synthesiser receiver does double duty — a convenient tuner with RDS functions and a high quality 50 watt amplifier.

50 W x 2



MiniDisc

High Tech, Small Disc, Pure Sound!

MJ-D508



Pioneer's advanced parameter processing, which controls ATRAC compressed data increasing the music signal information to provide audio recordings of the highest quality, the Pioneer Z-concept, and digital noise reduction mean a superior quality MiniDisc recorder. The convenient editing modes and features like "name clip" and "medley playback" let you get the most out of your music.



Tuners

Tune-in To Real Sound

F-208RDS



An RDS-EON tuner with all the works. Store up to 30 AM/FM stations in this sleek unit. RDS provides a wide variety of information services and automatic tuning functions, including automatic traffic and news reports, displaying the station name and text messages, and searching and displaying programme types.



F-104*



This quality tuner lets you store 36 AM/FM stations. With its SR terminal, simply connect a cable to use the amplifier remote to operate this receiver.

* This product is not available in the U.K.



Cassette DECKS

New Sounds For Your Favourite Cassettes

Digital Input
Terminal



Digital
Processing
System board



Digital
Processing
System IC



CT-W806DR

DIGITAL PROCESSING SYSTEM LEGATO LINK CONTROLLER SUPER AUTO BLE XD FLEX FREQUENCY LEVEL EXPANDER CO-PROCESS STEREO SR

Applying the latest digital developments to the analogue format results in surprising quality sound. This double cassette deck has everything you need for high performance recording and playback, including a digital processing system for lower signal deterioration, a digital input terminal and easy ALCA (Automatic Level Control - Performed In Digital Domain) and TDNS (Tape Duplication Noise Suppression) digital dubbing.



CT-W706DR*

DIGITAL PROCESSING SYSTEM LEGATO LINK CONTROLLER SUPER AUTO BLE XD FLEX FREQUENCY LEVEL EXPANDER CO-PROCESS STEREO SR

A great idea. This double cassette deck uses digital technology such as digital noise reduction and digital TDNS (Tape Duplication Noise Suppression) to obtain the best possible results from your cassettes.

* This product is not available in the U.K.



CT-W606DR

DIGITAL PROCESSING SYSTEM SUPER AUTO BLE XD FLEX FREQUENCY LEVEL EXPANDER CO-PROCESS STEREO SR

A double cassette deck with Pioneer's advanced digital processing system and Legato Link pulls every last bit of sound from your cassettes.



CT-W505R*

FLEX FREQUENCY LEVEL EXPANDER AUTO BLE CO-PROCESS STEREO SR

The very best of analogue sound reproduction, this double cassette deck uses ALCA (Automatic Level Control - Performed In Digital Domain) for a constant recording level and TDNS (Tape Duplication Noise Suppression) for deleting bias noise.

* This product is not available in the U.K.



CT-W208R

SR

This quality double cassette deck is a perfect addition to any system.



CT-S250

FLEX FREQUENCY LEVEL EXPANDER SR

Of course, you still want to play all those favourite cassettes. So why not add this affordable single cassette player to your system?



For full product features and specifications, please see pages 60 to 61.

Quality Sound in all Shapes and Sizes

Speakers

A GREAT SET OF SPEAKERS MAKES ALL THE DIFFERENCE IN THE WORLD. THIS IS WHY PIONEER OFFERS A WIDE SELECTION OF FANTASTIC HIGH PERFORMANCE SPEAKERS DESIGNED FOR ALL TYPES OF SYSTEMS FROM HI-FI TO 7.1 CHANNEL SURROUND SOUND. AND PIONEER SPEAKERS ARE DESIGNED FOR ALL TYPES OF INTERIORS — SMALL SIZE SATELLITE SPEAKERS, WOOD TONES AND VARYING COLOURED GRILLES. PIONEER SPEAKERS LET YOU ENJOY THE FULL SPECTRUM OF SOUND FROM THE COOL, SMOOTH TONES OF VINTAGE JAZZ TO THE HIGH POWERED SOUNDTRACK OF AN ACTION FILM...

S-H509V

100 W

The perfect accessory for any living space. Add these elegant 2-way, 100 watt speakers to your system for high performance sound. They are also magnetically shielded to prevent interference so they can double as A/V speakers.



S-H309V

80 W

Enjoy the new look of classic black floor speakers. These high performance, 2-way, 80 watt speakers can double as A/V speakers because they are magnetically shielded to prevent interference.



S-H309V-W

80 W

Are warm wood-tones more your style? Then opt for 80 watts of high performance 2-way speakers in the exclusive Calvados wood finish.



S-H210V

80 W

Perfectly packaged 2-way speakers for shelf placement. Not only do they fit into any interior – they also sound fantastic with 80 Watt power handling and magnetic shielding.



CS-9070

220 W

Crystal clear sound is what you'll hear from these super powerful 3-way, 220 watt speakers. They are also magnetically shielded so you can forget about interference with other electronics and use them as A/V speakers.



CS-7070

190 W

Maximum music at 190 watts. These quality 3-way speakers are also magnetically shielded to prevent interference and can be used as A/V speakers.



CS-5070

140 W

Designed for sound, these 3-way 140 watt speakers are an excellent choice for any hi-fi system.



CS-3070

120 W

Something slightly smaller? Then you'll want these subtle 120 watt, 3-way speakers for your system.



For full product features and specifications, please see page 61.

Add-on Equipment & ACCESSORIES

The Final Detail of Sounds

PL-990

TURNTABLE

Sometimes you can't beat a vinyl classic. This high-tech, fully automatic stereo turntable features a low-mass straight tone arm, precise DC servo motor and built-in phono equaliser. Simply connect to any auxilliary/line input on your amplifier or mini system.



GR-209

GRAPHIC EQUALISER

Its updated design and LED in the slider tips makes it easy to monitor your sound blend on this 7-band graphic equaliser.



JD-M300

6-CD MAGAZINE

Sort your favourite CDs into separate loaders to use with the PD-M426*, PD-M406* and PD-M603 multi Compact Disc players. It couldn't be easier.

* These products are not available in the U.K.



Headphones

SE-M350



SE-M250



SE-A40



SE-A10



SE-F5



SE-F5-L



SE-F5-Y



For full product features and specifications, please see pages 60 to 61.

Designed for your Style





YOUR STYLE IS SELECTIVE, WHICH IS WHY YOU'LL GO OUT OF YOUR WAY TO FIND SOMETHING SPECIAL. THIS PHILOSOPHY STRETCHES TO YOUR APPROACH TO MUSIC. YOUR SOUND SYSTEM NEEDS TO NOT ONLY SOUND LIKE ART, BUT LOOK THE PART, TOO. YOU'LL CERTAINLY WANT TO MEET PIONEER'S NS SERIES, THEN. THESE STYLISHLY DESIGNED SYSTEMS BLEND PERFECTLY IN ANY LIVING ENVIRONMENT. AND PIONEER'S NS SERIES SYSTEMS FEATURE OPTIONAL CD RECORDERS THAT ALLOW YOU TO PLAY AND RECORD HIGH QUALITY PERSONALISED CDS.

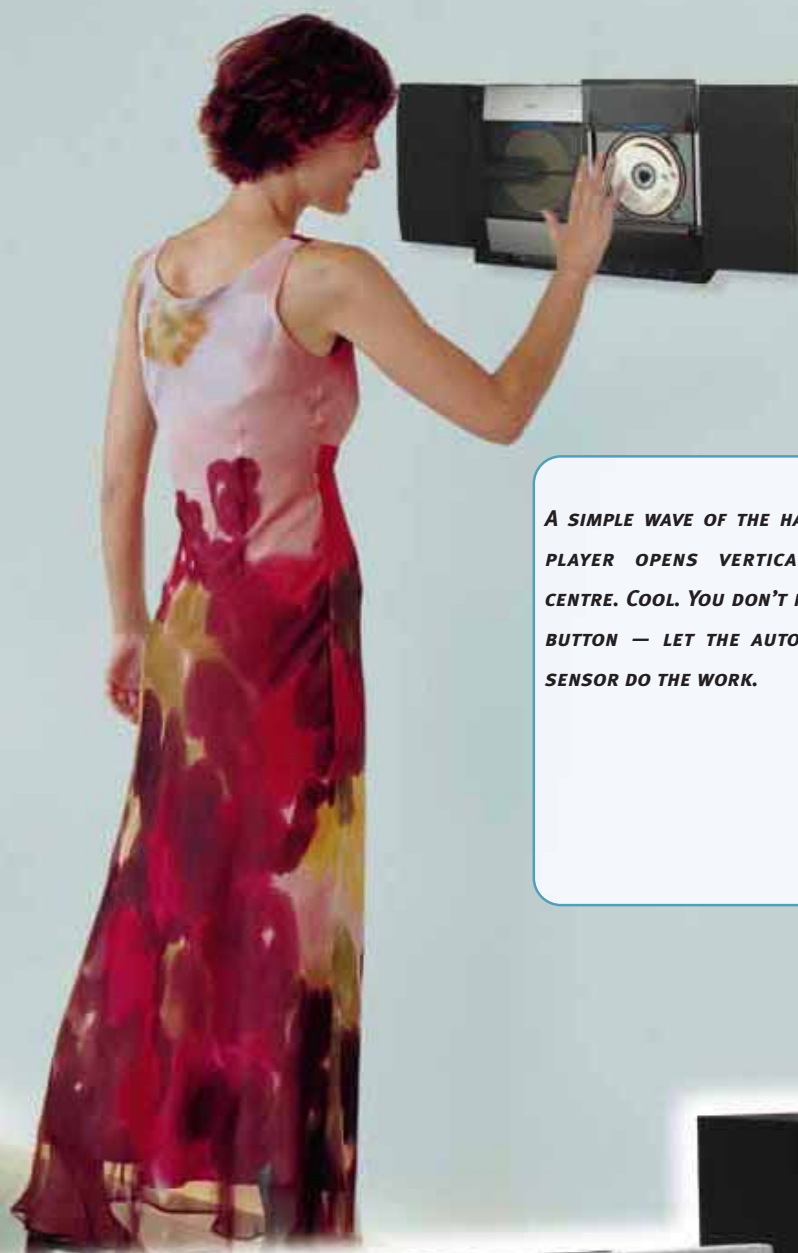
NS Series



NS-F10
WITH CD RECORDER

NS SERIES

Follow your Passion



*A SIMPLE WAVE OF THE HAND AND THE CD
PLAYER OPENS VERTICALLY FROM THE
CENTRE. COOL. YOU DON'T HAVE TO TOUCH A
BUTTON — LET THE AUTOMATIC INFRARED
SENSOR DO THE WORK.*



NS-F10 DESIGN AUDIO SYSTEM

IS IT SOUND OR IS IT ART? BOTH. PIONEER'S NS-F10 AUDIO SYSTEM IS A VISUAL FEAST WITH SLEEK, VERTICALLY EXPOSED COMPONENTS. ULTRA-MODERN, MOUNT YOUR WORK OF ART ON THE WALL AND PLACE THE AMP AND SUBWOOFER DISCREETLY IN THE CORNER. OR USE THE STAND THAT CONVENIENTLY CONCEALS THE CABLES. THIS QUALITY PERFORMER FEATURES AN OPTIONAL CD RECORDER AND EXCELLENT SOUND CAPABILITIES. TURN IT ON. PERFECT SOUND IS PERFECT ART.



NEW

30 W x 2 + 50 W

RDS

CD-DECK
STANDARD

SR

XC-F10

CD-RECEIVER

A clean vertical line meant to be hung on the wall. Art in itself. The head unit features an RDS tuner with a CD player and a slim stylish remote. When displayed vertically with the CD recorder, the stand easily hides the additional connection cable.



M-F10

AMPLIFIER

And Pioneer offers an extra sound bonus. This power amplifier can be placed underneath the subwoofer to produce the best audio performance in its class.

S-F10-LRW

SPEAKER SYSTEM

High quality sound packaged in perfect design, these two trendy matching satellite speakers with black or grey changeable grilles, will certainly become the talk of the town. The subwoofer reproduces the strongest bass tones for pure musical enjoyment.



NEW

PDR-F10

CD RECORDER

(optional)

Create your own compilation CDs with a unique Pioneer CD recorder to enjoy your personal CD recordings wherever you go. This optional component adds yet another panel to the cool, clean line of the NS-F10. Don't even hesitate to add it to the system.



NEW

JC-F10

EXTENSION CORD

(optional)

Add the optional 5 metre extension cord — just in case you decide to move the main CD unit further from the amplifier.



NEW

CT-F10

CASSETTE DECK

(optional)

Want to enjoy your favourite cassettes in this stylish package? Don't worry! It comes with an optional slot-in cassette player for the ultimate in convenience.



For full product features and specifications, please see pages 62 to 63.

Listen in Style



NS-9/NS-8

DESIGN AUDIO SYSTEMS

STREAMLINED AND SOPHISTICATED. CURVING GENTLY IN FRONT. AND HIGHLIGHTED IN ICE BLUE. TAILOR MADE FOR MODERN LIVING, NS-9 AND NS-8 ARE A DELIGHT TO BEHOLD – AND BE HEARD. THE SLIM SEPARATE DISPLAY DEFTLY HOUSES THE REMOTE. THE SUBWOOFER TUCKS OUT OF SIGHT. AND THE SPEAKERS COME WOOD-TONED (NS-9) OR SILVERY (NS-8). COMPOSED AND COLLECTIBLE, THE NS SERIES STRIKES ALL THE RIGHT CHORDS.

NS-9

30 W x 2 + 50 W



S-L9-LRW

SPEAKER SYSTEM NS-9

Warm, rich sounds accompany the warm wood tones of this speaker system – available in pine-colour (S-L9-LRW) and rosewood-colour finish (S-L9-A-LRW). Two sets of speaker grilles are included in blue and grey to match any interior.

XC-L77

CD/RECEIVER + SEPARATE DISPLAY NS-9 AND NS-8

Sleek curves and a separate display with detachable remote controller define the concept of style and convenience.

NS-8

30 W x 2 + 50 W



S-L8-LRW

SPEAKER SYSTEM NS-8

This cool silver-coloured satellite and subwoofer speaker system rings out with a full range of musical notes.

PDR-L77

CD RECORDER FOR NS-9 AND NS-8

(optional)

Essential for music lovers, a Pioneer CD recorder allows you to record your favourites onto a recordable or rewritable CD.



CT-L77

CASSETTE DECK FOR NS-9 AND NS-8

(optional)

Expand your listening pleasure with a matching cassette deck, featuring a compact horizontal loading tray to play your collection of tapes.



MJ-L77

MINIDISC RECORDER FOR NS-9 AND NS-8

(optional)

Made to match the centre unit design, this MiniDisc recorder enables easy recording and editing.



JC-L7

EXTENSION CORD

(optional)

Make sure you don't forget the optional extra 5 metre cable. When you get home, you might decide to move the separate display further away from the main unit.

**Listen to
your Music!**





DECIDE WHAT YOU WANT. THE CHOICE IS COMPLETELY UP TO YOU. PIONEER HI-FI MEANS MUSIC WITH NO LIMITS. AS LOUD AS YOU WANT IT, WHATEVER YOU WANT TO PLAY – CDs, MDs OR CASSETTES. AND IT LOOKS TRENDY, TOO. GET A CD PLAYER, ONE OR TWO CASSETTE DECKS, SEPARATE AMPS AND A 3-WAY SPEAKER SYSTEM. SET IT UP THE WAY YOU WANT! IT IS YOUR CALL. WANT MORE? THEN PLUG IN YOUR GAMES CONSOLE, PORTABLE MD, CD OR CASSETTE PLAYER. IT'S NOT ABOUT DOING IT THE RIGHT WAY, IT'S ABOUT DOING IT YOUR WAY.



Hi-Fi Systems

IS-21MD
WITH OPTIONAL CASSETTE DECK
AND ACCESSORY CASE

Get it your Way go Pioneer

IS series

www.isseries.pioneer-eur.com
Check this out!

100 W x 2 **CD-RDS**

IS-21T

Or try this. A CD player and horizontal tray-type cassette deck, separate amplifier and 3-way loudspeaker system.

IS SERIES

IF YOU WANT POWER, YOU'VE GOT TO HAVE BLASTING BASS. GET WHAT YOU WANT WITH THE SEPARATE AMPS AND SUPER-SIZED SUB-WOOFERS STANDARD IN PIONEER'S IS SERIES. FUTURISTIC SILVER STYLING WITH ICE BLUE ILLUMINATION THAT TAKES THE LOOK FAR INTO THE 21ST CENTURY. OPTIONS CAN BE EXPANDED TO KEEP THE BASS BOOMING FOR YEARS. SO GO PIONEER, YOU'VE GOT THE POWER AND THE CHOICE.



100 W x 2

IS-21MD



All in. You get a CD player, a slot-in MiniDisc recorder, a separate amplifier and a 3-way loudspeaker system.



WIDEN YOUR OPTIONS

Not only is it fit, it's flexible. IS comes with a front panel connection port, letting you link to a games console, portable MD, CD or cassette recorder... making it easy to record your personal compilations.

CT-IS21

(optional)

Need a cassette deck? This is the one that fits the look.



AC-IS21

(optional)

A cool compartment for your CDs, cassettes and remote control. Slide it under the main unit for a perfect compact look.



For full product features and specifications, please see pages 64 to 65.

HI-FI SYSTEMS

Big Power in One Package

Mini SYSTEMS

CLUBBING IN YOUR ROOM? EASY! PIONEER'S MINI-SYSTEMS ARE SMALL ENOUGH NOT TO TAKE UP ALL YOUR SPACE, BUT POWERFUL ENOUGH TO PUMP OUT THE BIG BEATS AND GROOVE MIXES YOU LOVE! WITH FLASHY DISPLAYS AND SPACE-AGE DESIGN, YOU'LL WANT TO SHARE IT. INVITE YOUR FRIENDS, HAVE A PARTY, AND SHOW OFF. OF COURSE, YOU MAY NOT HAVE ROOM FOR EVERYONE.



140 W x 2

N-A6800RDS



NEW

RDS SR

High-tech merges with power sound. Thanks to the 3-way, chrome-finished speakers, this hyper-modern system with a 3 CD player, cassette deck and RDS tuner makes a statement. Plus it's easy to connect an MP-3 player or any other digital component to add to the sound possibilities.

N-A4800RDS**100 W x 2**

Something slightly subtle? Maybe you'll want this tasty unit with a 3 CD player, cassette deck and RDS tuner. Its crisp 3-way speakers pour out pure sound while the cassette player features music search.

NEW

Micro SYSTEMS

THE X-MT2000 IS PURE CLASS WITH A LOT OF SOUND... A 3 CD PLAYER DESIGNED TO GIVE YOU EXTRA HOURS OF LISTENING PLEASURE. SMALL, BUT STYLISH, PERFECT FOR THE LIVING ROOM OR BEDROOM. WOOD-TONE SPEAKERS AND A SMART-LOOKING ALUMINIUM FRONT PANEL FULFIL YOUR STYLE REQUIREMENTS.

Compact Style With Expansive Sound

NEW**X-MT2000****20 W x 2**

Attention to detail. This stylish micro-system is just what you need for any room — from the office to the bedroom. Its 3 CD player and RDS tuner offer 2 x 20 watt output power. This quality unit is loaded with practical extras — like a CD wake-up and a snooze function. All we can say is... have fun!



For full product features and specifications, please see pages 64 to 65.

NS-DV55 Features

NS-DV55

SYSTEM	
Timer	Wake up/Sleep
Display	FL (Separate)
Dimmer	5 step (without Off)
Remote Control Unit	Preset, Learning & EL backlight
AMPLIFIER SECTION	
DIN Continuous Power Output (8 Ω)	
Front (1 kHz, 1 % THD)	30 W x 2
Centre (1 kHz, 1 % THD)	30 W
Rear (1 kHz, 1 % THD)	30 W x 2
Subwoofer (100 Hz, 1 % THD)	50 W
Number of Functions	6
DVD	•
Tuner	•
Video1	•
Video In/Out	RCA + S2
Audio In/Out	RCA
Video2	•
Video In	RCA+S2
Audio In	RCA+Coaxial (or Optical)
Audio1	•
Audio In/Out	RCA + Optical
Audio2	•
Audio In	RCA
Video Out	RCA + S2
P-Bass	•
Dolby Digital 5.1 ch	•
Dolby Pro Logic	•
DTS Surround 5.1 ch	•
DTS-CD	•
Surround mode	8
Auto	•
Standard	•
Musical	•
Drama	•
Action	•
Virtual Surround 1	•
Virtual Surround 2	•
Rear Wide	•
DSP mode	7
Hall 1	•
Hall 2	•
Jazz	•
Dance	•
Theatre 1	•
Theatre 2	•
Simulated Stereo	•
Midnight Mode	•
Bass & Treble Control	•
TUNER SECTION	
RDS Tuner	•
Auto Tuning	•
Presets	30
CD/VIDEO CD/DVD PLAYER SECTION	
Programmed Play	24
Random/Repeat Play	•/•
Last Memory	5 Discs
Condition	15 Discs
Time Search	•
Step/Slow	•/•
96kHz/24-bit D/A Converter	•
Video	1Vp-p
Video System	Auto/NTSC/PAL
SPEAKER SECTION	
Satellite	
Magnetically Shielded	•
Subwoofer	
Magnetically Shielded	•

NS-DV55 Specifications

NS-DV55

SYSTEM	
Cable length	
DVD Tuner—Display	1.5 m
DVD Tuner—Subwoofer	5 m x 2
Display Unit	
Dimensions	210 x 86 x 62 mm
Weight	0.23 kg
Remote Control Unit	
Dimensions	59 x 234 x 34 mm
Weight	0.15 kg (without battery)
Power Consumption	
On	173 W
Standby	1 W
Dimensions	280 x 82 x 240 mm
Weight	3.1 kg
AMPLIFIER SECTION	
DIN Continuous Power Output (8 Ω)	
Front (1 kHz, 1 % THD)	30 W x 2
Centre (1 kHz, 1 % THD)	30 W
Rear (1 kHz, 1 % THD)	30 W x 2
Subwoofer (100 Hz, 1 % THD)	50 W
CD/DVD PLAYER SECTION	
S/N Ratio (Audio)	115 dB
Dynamic Range	100 dB
Distortion	0.004 %
Frequency Response	
48 kHz Sampling	4 — 22,000 Hz
96 kHz Sampling	4 — 44,000 Hz
SPEAKER SECTION	
Front Satellite	8.7 cm
Impedance	8 Ω
Frequency Range	100 — 20,000 Hz
Maximum Input Power	40 W
Sensitivity (1 m/V)	86 dB
Dimensions (S-DV55ST-K) (W x H x D)	110 x 154 x 75 mm
Dimensions (S-DV55ST-Q) (W x H x D)	110 x 154 x 78 mm
Weight (S-DV55ST-K)	0.76 kg
Weight (S-DV55ST-Q)	0.81 kg
Centre Satellite	8.7 cm
Impedance	8 Ω
Frequency Range	100 — 20,000 Hz
Maximum Input Power	40 W
Sensitivity (1 m/V)	85.5 dB
Dimensions (S-DV55ST-K) (W x H x D)	210 x 110 x 75 mm
Dimensions (S-DV55ST-Q) (W x H x D)	210 x 110 x 78 mm
Weight (S-DV55ST-K)	0.83 kg
Weight (S-DV55ST-Q)	0.92 kg
Subwoofer	16 cm
Impedance	8 Ω
Frequency Range	25 — 300 Hz
Maximum Input Power	65 W
Sensitivity (1 m/V)	81.2 dB
Dimensions (W x H x D)	190 x 430 x 425 mm
Weight	13.8 kg

DVD Players Features - 1

	DVL-919E	DV-737/DV-737K	DV-636D	DV-535	DV-530	PDV-LC10	PDV-10
TECHNICAL FEATURES							
Playback Discs	DVD/LD/CD/ CD-R*1/VCD	DVD/CD/CD-R*1/ CD-RW*1/VCD	DVD/CD/CD-R*1/ CD-RW*1/VCD	DVD/CD/CD-R*1/ CD-RW*1/VCD	DVD/CD/CD-R*1/ CD-RW*1/VCD	DVD/CD/ CD-R*1/VCD	DVD/CD/ CD-R*1/VCD
Dual System (PAL/NTSC) (Video output)	• (DVD/LD/VCD)	•	•	•	•	•*2	•
Twin-Wave Laser Pick-up		•	•	•	•	•	•
Both-Side Play (LD)	•						
CONSTRUCTIONS							
Layered Chassis		• (Double)					
Acoustic Damper Tray		•	•				
AUDIO FEATURES							
Built-in Dolby Digital Decoder (5.1-channel)			•				
Built-in DTS Decoder			•				
96 kHz/24-bit D/A Converter	•	• (Twin)	•	•	•	•	•
Hi-bit Conversion	•						
Legato Link Conversion (H = Hi-bit)	• (H)					•	•
Digital Output							
Dolby Digital	•	•	•	•	•	•	•
Linear PCM	•	•	•	•	•	•	•
MPEG Audio	•	•	•	•	•	•	•
DTS (DVD)	•	•	•	•	•	•	•
Virtual Dolby Surround	•						
Virtual Dolby Digital		•	•				
Local regulator for Analogue Audio		•					
Symmetrical Audio Circuit		•					
VIDEO FEATURES							
10-bit Video Signal D/A Converter (DVD/VCD)	•	•	•	•	•	•	•
DVP (Digital Video Processing System) (LD)	•						
Component Frame DNR PRO		•					
PureCinema Progressive Scan (for NTSC)		•					
Mosquit Noise Reduction		•					
Block Noise Reduction		•					
High-Quality Circuits (LD)	•						
Horizontal Sharpness (DVD)	•						
Fine Focus Digital Filter		•					
8-bit Digital Field Memory (LD)	•						
CONVENIENCES							
GUI (Graphical User Interface)	•	• (Advanced)	• (Advanced)	• (Advanced)	• (Advanced)	• (Advanced)	• (Advanced)
Basic/Expert Mode Selection		•	•	•	•	•	•
Guide Indication		•	•	•	•	•	•
Set-Up Navigator		•	•	•	•	•	•
On-Screen Information		•	•	• (English Only)	• (English Only)	•	•
Jog & Joystick Remote control unit		•*3					
"Head-Up" Remote control unit	•		•	•	•		
32-Key Card-Type Remote Control						•	•
On-Screen Display On/Off	•	•	•	•	•	•	•
Large Screen 7-inch Wide LCD Display						•	
Reverse-Angle display						•	
Built-In Stereo Speaker						•	
Transfer Bit Rate Indicator	•	•	•	•	•	•	•
Accurate Digital Servo with Automatic Jitter Adjustment (DVD)	•	•	•	•	•	•	•
Viter-bi RF Decoding Process (DVD)	•	•	•	•	•	•	•
FL dimmer/off	•	•	•				
SPECIAL PLAY FUNCTIONS							
Program Memory (Title or Chapter) & Auto Play		•	•	•	•	•	•
TrickPlay Processor		•					
Resume Function (STOP Key)		•	•	•	•	•	•
Condition Memory (DVD)	• (30 discs)	• (15 discs)	• (15 discs)	• (15 discs)	• (15 discs)	• (15 discs)	• (15 discs)
Continue Play Memory	• (5 DVDs, 1 VCD & 1 LD)	• (5 DVDs, 1 VCD)	• (5 DVDs, 1 VCD)	• (5 DVDs, 1 VCD)	• (5 DVDs, 1 VCD)	• (5 DVDs, 1 VCD)	• (5 DVDs, 1 VCD)
Repeat Mode (All, Title/Chapter, A-B)	•	•	•	•	•	•	•
Programme Play (CD/Track, Video/Chapter, Title)	•	•	•	•	•	•	•
Still Play (Field/Frame/Auto)	• (DVD, Auto)	•	•	•	•	•	•
Still/Step Play	•	•	•	•	•	•	•
(Forward/Reverse, except VCD reverse)							
Slow Play (except VCD reverse)	•	•	•	•	•	•	•
Random Play	•	•	•	•	•	•	•
SCAN/SEARCH FUNCTIONS							
10-Key Direct Search and Play (Chapter/Track)	•	•	•	•	•	•	•
Title Search	•	•	•	•	•	•	•
Frame Search	• (LD)	• (DVD)					
Speaker Setting (Centre, Rear, Subwoofer)			•				

DVD Players Features - 2

	<i>DVL-919E</i>	<i>DV-737/DV-737-K</i>	<i>DV-636D</i>	<i>DV-535</i>	<i>DV-530</i>	<i>PDV-LC10</i>	<i>PDV-10</i>
TERMINALS							
Euro-Scart	2 (In/Out)	2 (In/Out)	2 (In/Out)	1	1		
RGB-Y/C Video Output (on Euro-Scart)		1	1	1	1		
S-video Output	1*4	2*4	2	1	1	1 (Mini Jack)	1 (Mini Jack)
Video Output	1*4	2*4	2	1	1		
Video Input						•	
5.1-Channel Audio Output			1				
Audio Output	1*4	2*4	2	1	1		
AV Output						1 (Mini Jack)	1 (Mini Jack)
AV Input						1 (w/AV Output)	
Optical Digital Output	1	1	1	1		1 (w/ Phones)	1 (w/ Phones)
Coaxial Digital Output	1*4	1*4	1	1	1		
Coaxial Digital Output (linear PCM)	1*4						
AC-3 RF Output (LD)	1*4						
Pioneer SR (System Remote) Terminal	2 (In/Out)	2 (In/Out)	2 (In/Out)	1 (IN)	1 (IN)		
PHONES						1	1

PHONES

*1) About reproduction of CD-R (recordable) disc and CD-RW (rewritable) disc.

* Both CD-R and CD-RW discs which are recorded by music CD format can be reproduced.

* Disc may not be reproduced because of following reasons: recording characteristics of recorder/characteristics of disc/scratch and dust on disc/dust and condensation on pickup lens

* Unfinalised disc can be reproduced (because of no TOC information, time display may not be shown) — DV-737, DV-737-K, DV-636D, DV-535, NS-DV55

* Unfinalised disc can be used only for normal reproduction (cannot work except normal reproduction such as forward, reverse and track search) — DV-919E

* Note: CD-R and CD-RW discs may be read on the condition that they comply to the applicable Orange Book Standards, and have been recorded with data that adhere to the applicable Red Book (CD-DA) or White Book (Video CD; version 2.0) formats.

*2) NTSC is converted into artificial PAL format for output. AV input only functions with PAL system.

*3) With Illumination

*4) Gold-plated

DVD Players Specifications

	<i>DVL-919E</i>	<i>DV-737/DV-737-K</i>	<i>DV-636D</i>	<i>DV-535</i>	<i>DV-530</i>	<i>PDV-LC10</i>	<i>PDV-10</i>
DVD VIDEO CHARACTERISTICS							
Horizontal Resolution	over 500 lines	over 500 lines	over 500 lines	over 500 lines	over 500 lines	over 500 lines	over 500 lines
DVD DIGITAL AUDIO CHARACTERISTICS							
Total Harmonic Distortion	0.002 %	0.0010 %	0.0018 %	0.002 %	0.002 %	0.03 %	0.03 %
Frequency Response							
48kHz	4 — 22,000 Hz	4 — 22,000 Hz	4 — 22,000 Hz	4 — 22,000 Hz	4 — 22,000 Hz	4 — 22,000 Hz	4 — 22,000 Hz
96kHz	4 — 44,000 Hz	4 — 44,000 Hz	4 — 44,000 Hz	4 — 44,000 Hz	4 — 44,000 Hz	4 — 44,000 Hz	4 — 44,000 Hz
Signal-to-Noise Ratio	115 dB	115 dB	115 dB	115 dB	115 dB	108 dB	108 dB
Dynamic Range	103 dB	109 dB	106 dB	102 dB	102 dB	88 dB	88 dB
LD VIDEO CHARACTERISTICS							
Horizontal Resolution							
PAL/NTSC	440 lines/425 lines						
Signal-to-Noise Ratio	60 dB (CX on)						
LD DIGITAL AUDIO CHARACTERISTICS							
Total Harmonic Distortion	0.002 %						
Frequency Response	4 — 20,000 Hz						
Signal-to-Noise Ratio	115 dB						
Dynamic Range	103 dB						
MISCELLANEOUS							
Power Requirements	220 — 240 V/ 50 — 60 Hz	220 — 240 V/ 50 — 60 Hz	220 — 240 V/ 50 — 60 Hz	220 — 240 V/ 50 — 60 Hz	220 — 240 V/ 50 — 60 Hz	100 — 240 V/ 50 — 60 Hz (AC Adaptor)	100 — 240 V/ 50 — 60 Hz (AC Adaptor)
Power Consumption	59 W	27 W	20W	12W	12W	20 W	8 W
Dimensions (W x H x D)	420 x 146 x 464 mm	420 x 128 x 370 mm	420 x 104 x 288 mm	420 x 104 x 281 mm	420 x 104 x 278 mm	190 x 28 x 142 mm	190 x 18 x 142 mm
Weight	9.1 kg	6.9 kg	3.0 kg	2.7 kg	2.7 kg	690 g	370 g

A/V Amplifiers & Receivers Features

	VSA-Eo8	VSX-909RDS/ VSX-909RDS-G	VSX-859RDS	VSX-839RDS	VSX-709RDS	VSX-609RDS	VSX-409RDS	M-10X
DIN CONTINUOUS POWER OUTPUT (1KHZ)								
Stereo (4 Ω)								120 W x 2
Stereo (6 Ω)	130 W x 2 (THD 1 %)							
Stereo (8 Ω)		110 W x 2 (THD 1 %)	100 W x 2 (THD 1 %)	100 W x 2 (THD 1 %)	80 W x 2 (THD 0.9 %)	80 W x 2 (THD 0.9 %)	80 W x 2 (THD 0.9 %)	75 W x 2
Surround								
Front	130 W x 2 (6 Ω, THD 1 %)	110 W x 2 (8 Ω, THD 1 %)	100 W x 2 (8 Ω, THD 1 %)	100 W x 2 (8 Ω, THD 1 %)	80 W/ch* x 2 (8 Ω, THD 0.9 %)	80 W/ch* x 2 (8 Ω, THD 0.9 %)	80 W/ch* x 2 (8 Ω, THD 0.9 %)	
Centre	130 W (6 Ω, THD 1 %)	110 W (8 Ω, THD 1 %)	100 W (8 Ω, THD 1 %)	100 W (8 Ω, THD 1 %)	80 W (8 Ω, THD 0.9 %)	80 W (8 Ω, THD 0.9 %)	80 W (8 Ω, THD 0.9 %)	
Rear	130 W x 2 (6 Ω, THD 1 %)	110 W x 2 (8 Ω, THD 1 %)	100 W x 2 (8 Ω, THD 1 %)	100 W x 2 (8 Ω, THD 1 %)	80 W/ch* x 2 (8 Ω, THD 0.9 %)	80 W/ch* x 2 (8 Ω, THD 0.9 %)	80 W/ch* x 2 (8 Ω, THD 0.9 %)	
SURROUND SOUND								
Dolby Pro Logic Surround	•	•	•	•	•	•	•	
Dolby Digital	•	•	•	•	•	•	Ready	
DTS Digital Surround	•	•	•	•	•	•		
MPEG	• (BC)	• (BC)	• (BC)	• (BC)				
THX	• (THX Ultra)	• (THX Ultra)	• (THX Select)	• (THX Select)				
Surround EX	•	•	•					
DTS-ES	• (Compatible)	• (Compatible)	• (Compatible)					
Digital Signal Processor (DSP)	•	•	•	•	•	•	•	
DSP Mode (** = Advanced Theatre)	7+4**	7+4**	7+4**	7+4**	6+4**	6+4**	5	
7-D Theatre	•	•	•					
5-D Theatre	•	•	•	•				
Accurate Imaging System (5-channel Equal Power)	•	•	•	•	•	•	•	
AUDIO FEATURES								
96 kHz/24-bit D/A Converter	•	•	•	•				
Direct Energy MOSFET Circuit	•	•	•	•				•
Digital Noise Reduction	•	•	•	•				
Midnight listening mode	•	•	•	•	•	•		
DIRECT Switch (Source Direct Switch)	•	•	•	•	•	•	•	
Motor-Driven Volume Control	•	• (Electronic)	• (Electronic)	• (Electronic)	• (Electronic)	• (Electronic)	• (Electronic)	
CONVENIENCES								
On-Screen Display (GUI)	•	•	•					
Remote Control	LCD touch panel	Presets & Smart	Presets & Smart	Presets & Smart	Presets & Smart	Presets	SR	
Multi Operation (Macro)	•	•	•					
Flexible Macro	•	•	•					
DVD Control	•	•	•	•	•	•	•	
Remote Key Illumination	LCD	All Key	All Key					
FL dimmer (steps)	• (4)	• (4)	• (4)	• (4)	•	•	•	
TUNER								
RDS (Radio Data System)		•	•	•	•	•	•	
EON Link		•	•	•	•	•	•	
Random Preset Stations		30	30	30	30	30	30	
3-Speed Accelerated Tuning		•	•	•	•	•	•	
TERMINALS								
5.1-channel Input	7.1-ch (External)	7.1-ch (External)	7.1-ch (External)	• (External)	• (DVD)	• (DVD)	• (DVD)	
RF Input for Dolby Digital (Demodulator)	•	•	•					
Digital Input	5 (assign)	5 (assign)	5 (assign)	4 (assign)	3	3		
Coaxial	2	2	2	2	1	1		
Optical	3	3	3 (incld front in)	2	2	2		
Digital Output	2	2	2	1	1			
Audio (Tuner Included)/Video Inputs	5/5	5/5	5/5	4/5	4/4	4/3	3/3	1/0
Audio/Video Output	2A/2AV+1V+1V	2A/2AV+1V+1V	2A/2AV+2V	2A/2AV+1V	2A/1AV+1V	2A/1AV+1V	1A/1AV+1V	
Phono Input	•	•	•					
S-Video Input/Output	5/3	5/3	5/3	5/3	4/2			
Component Input/Output	2/1	2/1	2/1 (assign)					
Preamp Output (Front/Centre/Rear/Subwoofer)	• All (7.1-ch)	• All (7.1-ch)	• All (7.1-ch)	• All (5.1-ch)	• (C/SW)	• (C/SW)	• (SW)	
A/V Input on Front	•	•	•	•	•	•		
SR (System Remote) Terminal	• (In/Out)	• (In/Out)	• (In/Out)	• (In/Out)	• (Out)	• (Out)	• (Out)	• (In)
Large Speaker Terminals	• (All)	• (All)	• (All)	• (All)	• (Front/Center)			• (All)
Speaker Outputs								
Discrete Outputs (All Channels)	•	•	•	•				
A+B (P = Parallel/S = Series)	• (P)	• (P)	• (P)	• (P)	• (independent)	• (independent)	(A only)	(A only)

*Total using one channel.

A/V Amplifiers & Receivers Specifications

	VSA-E08	VSX-909RDS/ VSX-909RDS-G	VSX-859RDS	VSX-839RDS	VSX-709RDS	VSX-609RDS	VSX-409RDS	M-10X
AMPLIFIER SECTION								
DIN Continuous Power Output (1 kHz)								
Stereo (4 Ω)								120 W x 2
Stereo (6 Ω)	130 W x 2							
Stereo (8 Ω)		110 W x 2 (THD 1 %)	100 W x 2 (THD 1 %)	100 W x 2 (THD 1 %)	80 W x 2 (THD 0.9 %)	80 W x 2 (THD 0.9 %)	80 W x 2 (THD 0.9 %)	75 W x 2
Surround								
Front Channels	130 W x 2 (6 Ω)	110 W x 2 (8 Ω, THD 1 %)	100 W x 2 (8 Ω, THD 1 %)	100 W x 2 (8 Ω, THD 1 %)	80 W/ch* x 2 (8 Ω, THD 0.9 %)	80 W/ch* x 2 (8 Ω, THD 0.9 %)	80 W/ch* x 2 (8 Ω, THD 0.9 %)	
Centre Channel	130 W (6 Ω)	110 W (8 Ω, THD 1 %)	100 W (8 Ω, THD 1 %)	100 W (8 Ω, THD 1 %)	80 W (8 Ω, THD 0.9 %)	80 W (8 Ω, THD 0.9 %)	80 W (8 Ω, THD 0.9 %)	
Rear Channels	130 W x 2 (6 Ω)	110 W x 2 (8 Ω, THD 1 %)	100 W x 2 (8 Ω, THD 1 %)	100 W x 2 (8 Ω, THD 1 %)	80 W/ch* x 2 (8 Ω, THD 0.9 %)	80 W/ch* x 2 (8 Ω, THD 0.9 %)	80 W/ch* x 2 (8 Ω, THD 0.9 %)	
Total Harmonic Distortion (20 — 20,000 Hz, 8 Ω)	0.09 %	0.09 %	0.09 %	0.09 %				0.05 %
Input (Sensitivity/Impedance)								
PHONO (MM)	4.7 mV/47 kΩ	4.7 mV/47 kΩ	4.7 mV/47 kΩ					
CD, TUNER, AUX, TAPE	335 mV/47 kΩ							
CD, LINE, TAPE, VCR, LD (LDP)		335 mV/47 kΩ	335 mV/47 kΩ	335 mV/47 kΩ	200 mV/47 kΩ	200 mV/47 kΩ	200 mV/47 kΩ	0.7 V / 50 kΩ
Frequency Response								
PHONO (MM)	20 — 20,000 Hz ±0.3 dB	20 — 20,000 Hz ±0.3 dB	20 — 20,000 Hz ±0.3 dB					
CD, TUNER, AUX, TAPE	5 — 100,000 Hz +0 dB, -3 dB							
CD, LINE, TAPE		5 — 100,000 Hz +0 dB, -3 dB	5 — 100,000 Hz +0 dB, -3 dB	5 — 100,000 Hz +0 dB, -3 dB	5 — 100,000 Hz +0 dB, -3 dB	5 — 100,000 Hz +0 dB, -3 dB	5 — 100,000 Hz +0 dB, -3 dB	5 — 100,000 Hz +0 dB, -3 dB
Signal-to-Noise Ratio (DIN; continuous rated power output/50mW)								
PHONO (MM)	68/61 dB	68/61 dB	68/61 dB					
CD, TUNER, AUX, TAPE	92/65 dB							
CD, LINE, TAPE		92/65 dB	92/65 dB	92/65 dB	88/64 dB	88/64 dB	88/64 dB	118 dB (IHF, A-network)
FM TUNER SECTION								
Usable Sensitivity (Mono)								
		15.2 dBf, IHF (1.6 μV/75 Ω)	15.2 dBf, IHF (1.6 μV/75 Ω)	15.2 dBf, IHF (1.6 μV/75 Ω)	15.2 dBf, IHF (1.6 μV/75 Ω)	15.2 dBf, IHF (1.6 μV/75 Ω)	15.2 dBf, IHF (1.6 μV/75 Ω)	
Sensitivity (DIN)								
Mono (26 dB S/N, 75 Ω)		1.1 μV	1.1 μV	1.1 μV	1.1 μV	1.1 μV	1.1 μV	
Stereo (46 dB S/N, 75 Ω)		50 μV	50 μV	50 μV	50 μV	50 μV	50 μV	
Signal-to-Noise Ratio								
Mono (DIN)		62 dB	62 dB	62 dB	62 dB	62 dB	62 dB	
Stereo (DIN)		58 dB	58 dB	58 dB	58 dB	58 dB	58 dB	
Stereo Separation (1 kHz)		40 dB (1 kHz)	40 dB (1 kHz)	40 dB (1 kHz)	40 dB (1 kHz)	40 dB (1 kHz)	40 dB (1 kHz)	
VIDEO SECTION								
Input (Sensitivity/Impedance)								
	1 V p-p/75 Ω	1 V p-p/75 Ω	1 V p-p/75 Ω	1 V p-p/75 Ω	1 V p-p/75 Ω	1 V p-p/75 Ω	1 V p-p/75 Ω	
MISCELLANEOUS								
Power Requirements								
	AC 220 — 230 V (UK 230 V)	AC 220 — 230 V (UK 230 V)	AC 220 — 230 V (UK 230 V)	AC 220 — 230 V (UK 230 V)	AC 220 — 230 V (UK 230 V)	AC 220 — 230 V (UK 230 V)	AC 220 — 230 V (UK 230 V)	AC 220 — 230 V (UK 230 V)
	50/60 Hz	50/60 Hz	50/60 Hz	50/60 Hz	50/60 Hz	50/60 Hz	50/60 Hz	50/60 Hz
Power Consumption	500 W	400 W	400 W	400 W	220 W	220 W	220 W	220 W
Dimensions (W x H x D)	420 x 173 x 470 mm	420 x 173 x 470 mm	420 x 173 x 463 mm	420 x 173 x 463 mm	420 x 158 x 401 mm	420 x 158 x 391 mm	420 x 158 x 391 mm	420 x 128 x 319 mm
Weight	18 kg	16.2 kg	17.6 kg	16.2 kg	8.4 kg	8.4 kg	8.4 kg	7.6 kg

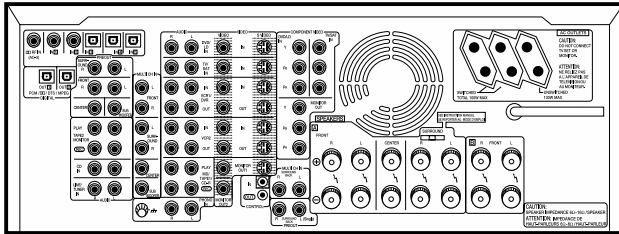
*Total using one channel.

A/V Amplifiers & Receivers Rear Panels - 1

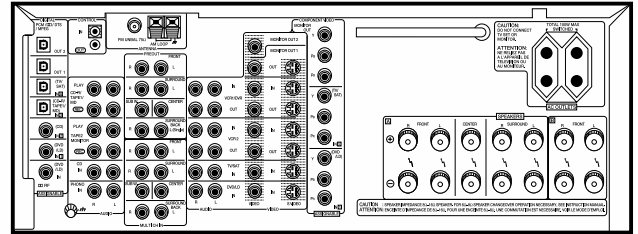


VSX-909RDS

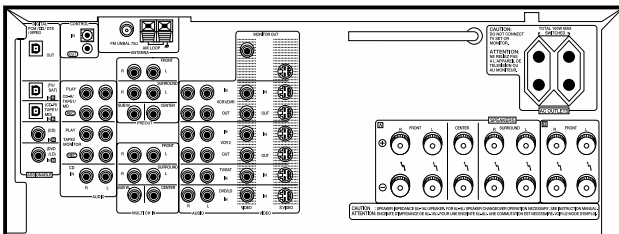
A/V Amplifiers & Receivers Rear Panels - 2



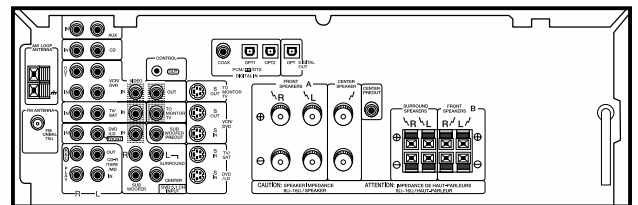
VSA-E08



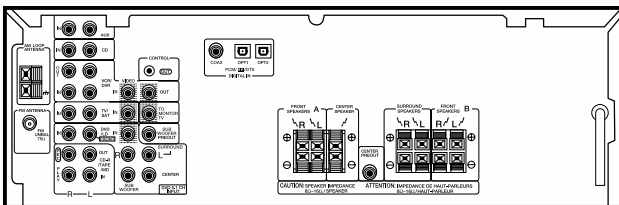
VSX-859RDS



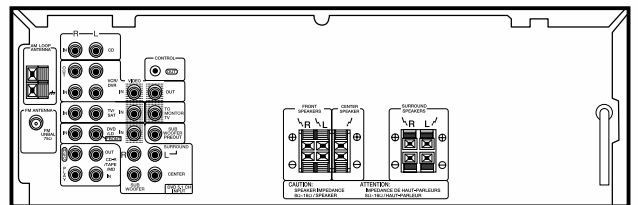
VSX-839RDS



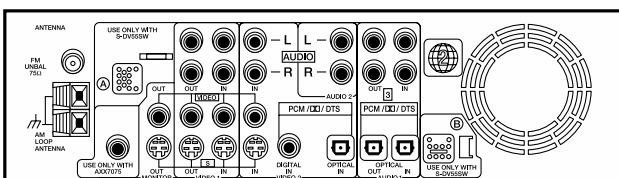
VSX-709RDS



VSX-609RDS



VSX-409RDS



NS-DV55

A/V Speakers Specifications

	S-V59T	S-V59	S-V39T	S-V39	S-V30T	S-V30	S-W80S
SYSTEM							
Centre speakers	compact	compact	compact	compact	compact	compact	
Front speakers	tall boy	satellite	tall boy	satellite	tall boy	satellite	
Rear speakers	satellite	satellite	satellite	satellite	satellite	satellite	
Magnetically shielded for video use	•	•	•	•	•	•	
Front	14 cm cone woofer (x3), 2.5 cm dome tweeter	10 cm dual-cone	14 cm cone woofer (x2), 2.5 cm dome tweeter	10 cm dual-cone	14 cm cone woofer (x2), 2.5 cm dome tweeter	10 cm cone woofer 2.5 cm dome tweeter	
Centre	10 cm cone woofer (x2), 2.5 cm dome tweeter	10 cm cone woofer (x2), 2.5 cm dome tweeter	10 cm dual-cone (x2)	10 cm dual-cone (x2)	8.3 cm cone woofer (x2), 2.5 cm dome tweeter	8.3 cm cone woofer (x2), 2.5 cm dome tweeter	
Rear	10 cm dual-cone	10 cm dual-cone	10 cm dual-cone	10 cm dual-cone	8.3 cm cone type	8.3 cm cone type	
Subwoofer Module		22 cm cone woofer		14 cm cone woofer (x2)		22 cm cone woofer	22 cm cone woofer
Enclosure							Front Bass-reflex type
Built-in Amplifier							•
Stereo (Screw Terminal)							•
Mono (Pin Jack)							•
Power Consumption							65.5 W
Power Requirements							AC 220 – 230 V 50/60 Hz
Input Sensitivity/Impedance (100 Hz)							Speaker level: 1.6 V + 1.6 V/15 kΩ* Line level (RCA Jack): 160 mV/50 kΩ
Impedance	8 Ω	8 Ω	8 Ω	8 Ω	8 Ω	8 Ω	
Frequency Range	30 – 35,000 Hz (front) 60 – 20,000 Hz (rear) 60 – 35,000 Hz (centre)	60 – 20,000 Hz (front) 60 – 20,000 Hz (rear) 60 – 35,000 Hz (centre) 50 – 200 Hz (subw)	35 – 35,000 Hz (front) 60 – 20,000 Hz (rear) 60 – 20,000 Hz (centre)	120 – 20,000 Hz (front) 60 – 20,000 Hz (rear) 60 – 35,000 Hz (centre) 50 – 200 Hz (subw)	35 – 35,000 Hz (front) 120 – 20,000 Hz (rear) 60 – 35,000 Hz (centre) 70 – 21,000 Hz (centre)	100 – 23,000 Hz (front) 120 – 20,000 Hz (rear) 70 – 21,000 Hz (centre) 50 – 200 Hz (subw)	50 – 200 Hz
Sensitivity (1m/W)	90 dB/W	90 dB/W	90 dB/W	90 dB/W (sat) 80 dB/W (subw)	90 dB/W	89 dB/W	
Music Power (DIN)	100 W	100 W (satellite) 110 W (subw)	80 W	80 W	80 W	80 W (satellite) 110 W (subw)	
DIMENSIONS (W x H x D)							
Front	251 x 1,039 x 422 mm (with base) 185 x 1,000 x 390 mm (without base)	150 x 190 x 90 mm	184 x 900 x 318 mm	158 x 202 x 140 mm	184 x 900 x 318 mm	140 x 155 x 200 mm	
Rear	150 x 190 x 90 mm	150 x 190 x 90 mm	158 x 202 x 140 mm	158 x 202 x 140 mm	126 x 126 x 141 mm	126 x 126 x 141 mm	
Centre	440 x 150 x 110 mm	440 x 150 x 110 mm	390 x 158 x 140 mm	390 x 158 x 140 mm	330 x 120 x 165 mm	330 x 120 x 165 mm	
Subwoofer		250 x 480 x 384 mm		185 x 400 x 256 mm		250 x 480 x 384 mm	250 x 480 x 384 mm
WEIGHT							
Front	18.5 kg	1.3 kg	10 kg	1.3 kg	10 kg	2 kg	
Rear	1.3 kg	1.3 kg	1.3 kg	1.3 kg	1.1 kg	1.1 kg	
Centre	3 kg	3 kg	2.4 kg	2.4 kg	2.8 kg	2.8 kg	
Subwoofer		14 kg		5 kg		14 kg	14 kg

* Both channel in phase



PDP-502MXE PAL/SECAM/NTSC
PLASMA DISPLAY PANEL



SD-T50W1 3-Line Digital Comb Filter PAL/SECAM/NTSC SR
PROJECTION TELEVISION

- 16:9 aspect ratio, 50-inch (diagonal) screen • High-resolution XGA picture: 1,280 horizontal x 768 vertical pixels • Superior brightness and contrast: Black stripes screen construction, waffle-structure barrier ribs • Outstanding colour: 256 grey-scale, 16.7 million colours • Clear sub-field drive: 8-fold density progressive #2 • 160° viewing angle • Input signal compatibility: PAL/NTSC/SECAM/HDTV • Versatile connections: Analogue RGB In/Out, RS-232C (D-Sub 9 pin), Combination In/Out, Control In/Out, Audio Input/Output • Personal Computer Input Resolution: VGA/SVGA/XGA/SXGA#1/UXGA#1 • Desktop feet included • Optional video box (PDA-5001) and 50-inch left/right speakers (PDP-504-LR) available
- Dimensions (W x H x D): 1,218 x 714 x 98 mm • Weight: 40.3 kg

#1 Compressed

#2 Clear: HI contrast & Low Energy Address & Reductions of False Contour Sequence

- 16:9 widescreen aspect ratio • Worldwide multi-system reception (PAL/SECAM/NTSC) • Wide 50° vertical/140° horizontal viewing angle • Multipoint digital convergence and remote convergence • High-contrast black screen with SLD (Surface Layer Diffusion) • High-Contrast Black Coupler • Stereo sound systems CCIR (A2), digital NICAM (I, B/G) and MTS (US) • Built-in stereo amplifier: 30 W x 2 (PMP) • Built-in 2-way stereo speakers • Front surround • Built-in teletext decoders (CEEFAX, FLOF [FASTEXT], TOP) with 16-page memory • Multilingual display • SR (System Remote) control unit
- Dimensions (W x H x D): 1,240 x 1,215 x 615 mm • Weight: 90 kg

CD Recorders Features - 1

	PDR-W839	X-MR7	PDR-609	PDR-F30	PDR-L77
DRIVE					
CD-R	Single-tray	Single-tray	Single-tray	Self Chuck type	Single-tray
CD	3-CD	3-CD	—	—	—
Applicable Discs	CD/CD-R/CD-RW	CD/CD-R/CD-RW	CD/CD-R/CD-RW	CD/CD-R/CD-RW	CD/CD-R/CD-RW
DIGITAL FEATURES					
D/A Converter	24-bit D/A Converter	Digital Filter D/A Converter	24-bit D/A Converter	Digital Filter D/A Converter	Digital Filter D/A Converter
A/D Converter	24-bit A/D Converter		24-bit A/D Converter		
Legato Link Conversion	•	•	•		
Sampling Rate Converter	•	•	•	•	•
STRUCTURAL FEATURES					
High Rigidity Chassis	•		•		
Clean Laser Pickup Circuit	•	•			•
Three-Beam Differential Push-Pull Pickup	•	•	•		•
RECORDING FEATURES					
Z-Concept	•	•	•	•	•
Erase (CD-RW disc)					
Last Track	•	•	•	•	•**
All-Track	•	•	•	•	•**
Multi Track	•	•	•	•	•**
Disc	•	•	•	•	•**
TOC (Unfinalise)	•	•	•	•	•**
Track Skip ID Input	•		•	•	•**
Digital Recording Level Control (dB)	• (-∞ ~ +20)	• (-48 ~ +12)	• (-∞ ~ +20)	• (-86 ~ +20)	• (-48 ~ +12)
Digital Recording Balance Control	•		•		
Digital Synchro Recording (Ext. Input)					
1-Track	•	•	•		•**
All-Track	•	•	•		•**
All-Track + Auto Finalise	•	•	•		•**
DAT ID Synchro	•	•	•		•
Category Code Display (Digital input)	•		•	•	•
Analogue Synchro Recording (Ext. Input)					
1-Track	•		•		
All-Track	•		•		
All-Track + Auto Finalise	•		•		
Auto Synchro Start Level Adjustment	•		•		
Audio Buffer	•	•	•	•	•
Auto Stop Delay	•	5 sec.	•	•	5 sec.
Rec Mute	•		•		•**
Auto Track Increment	•	•	•	•	•
Auto Track Increment Level Adjustment(Digital)	-24 ~ 78 dB (6 dB Step)		-24 ~ 78 dB (6 dB Step)		
Auto Track Increment Level Adjustment(Analogue)	-24 ~ 66 dB (6 dB Step)		-24 ~ 66 dB (6 dB Step)		
Auto Time Increment	• (1, 3, 5 Seconds)		• (1, 3, 5 Seconds)	• (1, 3, 5 Seconds)	
Manual Track Increment	•	•	•	•	•
Input Selector (Digital [Coaxial/Optical]/Analogue)	• (Coax/Opt/Analogue)	• (Optical/Analogue)	• (Coax/Opt/Analogue)	• (Optical/Analogue)	•** (Digital/Analogue)
Finalise (TOC Write)	•	•	•	•	•**
Sampling Monitor	•	•	•		•
Fade-in/Fade out	• (1 ~ 12sec)		• (1 ~ 12sec)		•**
SCMS (Serial Copy Management System)	•	•		•	•
Previous Monitor			•		
Copy (Internal)					
1 x Copy: Digital/Analogue	•/•	•/•			
2 x Copy: Digital/Analogue	•/•				
Auto SCMS Copy	•				
One Touch Copy	•	•			
1-Track	•	•			
1-Disc	•	•			
Program	•	•			
REC THIS	•				
Auto Space	•				
Rec Volume Control	•				
Rec Balance Control	•				
Playback Before Copy Executing	•				
CD Text Display	•		•	•	
CD Text Input					
Characters	Caps/Small/Mark/Numeric		Caps/Small/Mark/Numeric	Caps/Small/Mark/Numeric	
Disc Name	•		•	•	
Artist Name	•		•	•	
Track Name	•		•	•	
Name Clip	• (3 Names)		• (3 Names)		
Name Memory	• (3 Discs)		• (3 Discs)	• (3 Discs)	

CD-Recorders Features - 2

	PDR-W839	X-MR7	PDR-609	PDR-F10	PDR-L77
PLAYBACK FUNCTIONS					
Z-Concept	•	•	•	•	•
Direct Track Search	•	•	•	•	•
Manual/Track Search	•	•	•	•	•**
Index Search	•	•	•	•	•
Direct Song Selection	•	•	•	•	•**
Random Play	• (Multi Disc OK)	•	•	•	•**
Programmed Play	•	•	•	•**	•**
Talk-Back Input	•	•	•	•	•**
Direct Program	•	•	•	•	•
Programme Check	•	•	•	•	•**
Programme Clear	•	•	•	•	•**
Repeat Play	•	•	•	•	•
1-Track, All-Track	•	•	•	•	•**
Programmed, Random	•	•	•	•	•
Relay play	• (CD1/CD2/CD3/CD-R)	•	•	•	•
Skip Play	•	•	•	•	•**
Fade-In/Fade-Out	• (1 ~ 12sec)	•	• (1 ~ 12sec)	•	•**
Timer Play	•	•	•	•	•
DISPLAY					
Level Meter	• (14 seg/ch)	•	• (14 seg/ch)	•	•**
Remaining Recording Time	•	•	•	•	•**
Display On/Off (Dimmer)	•	•	•	•	•
Time Display Switching	•	•	•	•	•**
TERMINALS					
Optical Digital Input/Output	1/1	1/1	1/1	•	1/1
Coaxial Digital Input/Output	1/1	•	1/1	•	•
Line Input/Output	1/1	3/2	1/1	•	1/1
Headphone Jack	1	1	1	•	•
Keyboard Terminal	1	•	•	•	•
Control Input	1	•	1	•	•
TEXT Control	•	•	1	•	•
OTHERS					
Built-in Amplifier	•	•	•	•	•
Built-in RDS Tuner	•	•	•	•	•
Sound Field Control (DANCE, HALL, LIVE)	•	•	•	•	•
Bass Boost	•	•	•	•	•
2-Way Speaker System	•	•	•	•	•

* With Bypass function

** With Remote Control

CD-Recorders Specifications

	PDR-W839	X-MR7	PDR-609	PDR-F10	PDR-L77
COMPACT DISC RECORDER					
Number of Channels	2	2	2	2	2
Frequency Response	2 — 20,000 Hz	2 — 20,000 Hz	2 — 20,000 Hz	2 — 20,000 Hz	2 — 20,000 Hz
Sampling Frequency (Recording/Playback)	44.1 kHz	44.1 kHz	44.1 kHz	44.1 kHz	44.1 kHz
Signal-to-Noise Ratio					
Recording	92 dB	92 dB	92 dB	92 dB	88 dB
Playback	112 dB	110 dB	112 dB	110 dB	110 dB
Dynamic Range (EIAJ)					
Recording	92 dB	92 dB	92 dB	92 dB	88 dB
Playback	98 dB	96 dB	98 dB	98 dB	98 dB
Total Harmonic Distortion (1 kHz)					
Recording	0.004 %	0.006 %	0.004 %	0.005 %	0.005 %
Playback	0.0017 %	0.002 %	0.0017 %	0.002 %	0.002 %
MISCELLANEOUS					
Power Requirements					
Power Consumption	17 W	98 W	13 W	•	18 W
Dimensions (W x H x D)	420 x 128 x 380 mm	210 x 260 x 392 mm	420 x 105 x 295 mm	205.5 x 68 x 268 mm	220 x 75 x 310 (334 with adapter) mm
Weight	5.7 kg	8.4 kg (net)	3.5 kg	2 kg	3 kg
COMPACT DISC PLAYER					
Frequency Response	2 — 20,000 Hz	4 — 20,000 Hz	•	•	•
Signal-to-Noise Ratio	112 dB	100 dB	•	•	•
AMPLIFIER					
Continuous Power Output DIN (1 kHz) (THD 1 %, 6 Ω)	•	35 W + 35 W (1 kHz, 6 Ω)	•	•	•
Power Output (RMS) (1 kHz, THD 10 %, 6 Ω)	•	50 W + 50 W (1 kHz, 6 Ω)	•	•	•
TUNER					
Signal-to-Noise Ratio (Mono/Stereo, DIN)	•	60/56	•	•	•
SPEAKER SYSTEM					
Enclosure	•	Rear Bass-Reflex	•	•	•
Speakers	•	14 cm cone woofer 2.5 cm semi-dome tweeter	•	•	•
Impedance	•	6 Ω	•	•	•
Frequency Range	•	45 — 60,000 Hz	•	•	•
Sensitivity (dB/W/m)	•	86	•	•	•
Dimensions (W x H x D)	•	182 x 320 x 232.5 mm	•	•	•
Weight	•	4 kg (net)	•	•	•

CD File-Type Players & Multi CD Players Features

	PD-F1009	PD-F1007	PD-F958	PD-F706	PD-F607	PD-M426	PD-M406	PD-M603 (UK only)
FORMAT								
Separate Single-Disc Slot (S = Single Loader)	• (S)	• (S)	• (S)	•				
Disc Capacity	301	301	101	25+1	25	6	6	6
WIDE-RANGE TECHNOLOGY								
Legato Link Conversion	•	•						
DIGITAL FEATURES								
1-Bit DLC with Pulseflow D/A Converter	•**	•**	•	•	•	•	•	•
LOW-NOISE DESIGN								
Low-Loss Laser Pickup	•	•	•	•	•	•	•	•
PLAYBACK OPTIONS								
Playback Modes								
Single Disc	•	•	•	•	•			
All Discs	•	•	•	•	•	•	•	•
"Custom File" Discs	•	•	•	•	•			
Random Play Modes						•	•	• (2)
Single Disc	•	•	•	•	•			
All Discs	•	•	•	•	•			
"Custom File" Discs	•	•	•	•	•			
Programmed Play (Tracks/Discs)	36	36	36	24	32	32	32	32
Total Time Display	•	•	•	•	•			
Repeat Modes	8	8	8	8	8	4	4	7
Single Track	•	•	•	•	•	•	•	
Single Disc	•	•	•	•	•			
All Discs	•	•	•	•	•	•	•	
"Custom File" Discs	•	•	•	•	•			
Single Disc Random	•	•	•	•	•			
All Discs Random	•	•	•	•	•	•	•	
"Custom File" Discs Random	•	•	•	•	•			
Programmed Tracks	•	•	•	•	•	•	•	
CONVENIENCES								
"Custom Filing"	• (5)	• (10)	• (3)	• (3)	• (3)			
CD Text	•	•	•		•			
Title Input		•	•					
CD-Deck Synchro		•	•	•				•
Full Function Remote Control with Power On/Off	•	•	•	•	•	•		•
Previous Disc Scan	• (20)	• (20)	• (20)	• (15)	• (15)			
Best Selection Memory	• (20)	• (50)	• (20)	• (15)	• (15)			
Hi-Lite Scan with Programmed Play	•	•	•	•	•			
Memory Backup		•	•					
Memory Hold	•		•	•	•	•	•	•
Last Disc Memory	•	•	•	•	•	•	•	•
Magazine Hi-Lite Scan						•	•	•
Jog Dial	•	•						
Powered Door	•	•	•					
Direct Track Access by Number Keypad	•	•*	•*	•*	•*			•
Timer Play (Timer Optional)						•	•	•
Auto Power-On/Power-Down Eject (Single Disc Slot)				•				
Liner-Notes File			1	1	1			
TERMINALS								
Optical Digital Output	•	•	•	•	•			•
SR (System Remote) Terminal	• (In)		• (In)				•	
One More 300CD's Connect		•						
I/O Interface Terminals			•					
Headphone Output with Volume Control		•	•	•	•			•
Keyboard Input		•						
ANTI-RESONANCE AND ANTI-VIBRATION DESIGNS								
Honeycomb Chassis						•	•	•
Large Insulators	•	•	•	•	•	•	•	•

* Remote control

** Without pulseflow

CD File-Type Players & Multi CD Players Specifications

	PD-F1009	PD-F1007	PD-F958	PD-F706	PD-F607	PD-M426	PD-M406	PD-M603 (UK only)
Frequency Response	2 — 20,000 Hz	2 — 20,000 Hz	2 — 20,000 Hz	2 — 20,000 Hz	2 — 20,000 Hz	2 — 20,000 Hz	2 — 20,000 Hz	2 — 20,000 Hz
Signal-to-Noise Ratio (EIAJ)	105 dB	98 dB	98 dB	98 dB	98 dB	98 dB	98 dB	102 dB
Dynamic Range (EIAJ)				96 dB	96 dB	95 dB	95 dB	96 dB
Channel Separation (EIAJ)								95 dB
Distortion (EIAJ)				0.003 %	0.003 %	0.005 %	0.005 %	0.003 %
Power Requirements				220 — 240 V, 50 — 60 Hz	220 — 240 V, 50 — 60 Hz	220 — 240 V, 50 — 60 Hz	220 — 240 V, 50 — 60 Hz	220 — 240 V, 50 — 60 Hz
Power Consumption	12 W			14 W	13 W	12 W	12 W	13 W
Dimensions (W x H x D)	420 x 193 x 433 mm	420 x 193 x 433 mm	420 x 193 x 402 mm	420 x 190 x 316 mm	420 x 193 x 312 mm	420 x 105 x 294 mm	420 x 105 x 294 mm	420 x 105 x 299 mm
Weight	7.5 kg	8 kg	6.5 kg	5 kg	4.8 kg	3.7 kg	3.7 kg	3.8 kg

CD-Players Features

	PD-S06	PD-S707	PD-S507	PD-207
FORMAT				
Disc Capacity	1	1	1	1
WIDE-RANGE TECHNOLOGY				
Hi-bit Legato Link Conversion S	•			
Hi-bit Legato Link Conversion		•	•	
DIGITAL FEATURES				
Jitter Proof Wide-Range D/A Converter	•			
DAC 24 (Jitter Proof 24-bit D/A Converter)		•	•	
1-Bit DLC with Pulseflow D/A Converter				•
STRUCTURAL DESIGNS				
Stable Platter Mechanism	•	•	•	
Acoustic Damper Mechanism	•			
Centre Tray Mechanism	•	•	•	•
LOW-NOISE DESIGNS				
Separate Analogue/Digital Transformer	•			
Accurate Transmission System	•	•	•	
Low-Loss Laser Pickup	•	•	•	•
Display Off Switch	•	•	•	•
PLAYBACK OPTIONS				
Edit Modes				
Compu-PGM		•	•	•
Auto Programme		•	•	•
Random Play Modes	•	•*	•*	•
Programmed Play (Tracks/Discs)	24	24	24	24
Repeat Modes	• (5)	• (6)	• (6)	• (6)
CONVENIENCES				
Time Location	•	•*	•*	
CD-Deck Synchro	•	•	•	•
Remote Control Unit with Power On/Off		•	•	•
Talk-Back Input			•	•
Memory Hold			•	•
Digital Level Control		•*	•*	•
Hi-Lite Scan		•	•	•
Jog Dial Track Search		•		
Index Search	•*			
Direct Track Access by Number Keypad	•*	•*	•*	•
Timer Play (Timer Optional)	•	•	•	•
Music Calendar	•	•	•	•
TERMINALS				
Digital Output (O = Optical/C = Coaxial)	O/C	O	O	O
Output Selector (Digital/Analogue)	•	•		
Headphone Output with Volume Control	•	•	•	•
ANTI-RESONANCE AND ANTI-VIBRATION DESIGNS				
Triple Layered Chassis	•			
Double Layered Chassis		•		
Honeycomb Chassis			•	
Large Insulators	•	•	•	•

* Remote control

CD-Players Specifications

	PD-S06	PD-S707	PD-S507	PD-207
Frequency Response	4 — 20,000 Hz	2 — 20,000 Hz	2 — 20,000 Hz	2 — 20,000 Hz
Frequency Range Capability	2 — 50,000 Hz*	2 — 40,000 Hz**	2 — 40,000 Hz**	
Signal-to-Noise Ratio (EIA)	113 dB	110 dB	110 dB	98 dB
Dynamic Range (EIA)	100 dB	99 dB	99 dB	96 dB
Channel Separation (EIA)	108 dB			
Distortion (EIA)	0.0013 %	0.002 %	0.002 %	0.003 %
Power Requirements	220 — 230 V, 50 — 60 Hz	220 — 230 V, 50 — 60 Hz	220 — 230 V, 50 — 60 Hz	220 — 230 V, 50 — 60 Hz
Power Consumption	19 W	14 W	13 W	12 W
Dimensions (W x H x D)	420 x 128 x 374 mm	420 x 128 x 374 mm	420 x 112 x 283 mm	420 x 267 x 103 mm
Weight	10 kg	7.2 kg	3.8 kg	2.7 kg

*With Hi-bit Legato Link Conversion S

**With Hi-bit Legato Link Conversion

Integrated Amplifiers & Receivers Features

	A-607R	A-509R	A-307R	A-209R	A-109	SX-209RDS
POWER OUTPUT						
DIN Continuous Power Output (1 kHz)						
4 Ω	120 W x 2	90 W x 2	80 W x 2	60 W x 2		50 W x 2
8 Ω	75 W x 2	60 W x 2	55 W x 2	45 W x 2	40 W x 2	
WIDE-RANGE TECHNOLOGY						
Wide-Range Linear Circuit	•	•	•	•	•	•
High Channel Separation Design	•	•	•	•	•	•
AUDIO FEATURES						
Direct Energy MOSFET Circuit	•	•	•	•	•	•
Low-Impedance Driving Capability	•	•	•	•	•	•
Muting	•	•	•	•	•	•
Tone Controls	•	•	•	•	•	•
Loudness	•	•	•	•	•	•
ALL SOURCE DIRECT Switch						•
Large Insulators						•
CONSTRUCTION						
Advanced Direct Connection	•	•	•	•	•	•
Symmetrical Construction	•	•	•	•	•	•
Sound Stabilisers	•	•	•	•	•	•
LOW-NOISE DESIGNS						
Toroidal Transformer	•	•	•	•	•	•
Aero Wing Chassis	•	•	•	•	•	•
"Silent" Microprocessor System	•	•	•	•	•	•
"DIRECT" Switch	•	•	•	•	•	•
Local Off Circuit (Tone/Phono)	•	•	• (Phono)	• (Phono)	• (Phono)	•
HIGH-QUALITY PARTS						
Complementary Capacitor Pair	•	•	•	•	•	•
Speaker A/B Switching Relay	•	•	•	•	• (only A)	•
Motor-Driven Volume Control	•	•	•	•	•	•
Input Switching Relay	CD, TAPE 1/MD	TAPE1/ CD-R/MD				
Gold-Plated CD/Phono Inputs	•	•	•	•	•	•
RDS (RADIO DATA SYSTEM)						
EON information						•
TUNER						
Random Preset Stations						30
Direct Access Tuning						•
3-Speed Accelerated Tuning						•
CONVENIENCES						
SR (System Remote) Control Unit	•	•	•	•	•	•
Record Selector	•	•	•	•	•	•
Two-Way Dubbing	•	•	•	•	•	•
4-letter Station Memory						•
TERMINALS						
Audio Inputs	6	6	6	6	6	5
SR (System Remote) Terminal	•	•	•	•	•	•
Headphone Output	•	•	•	•	•	•
Speaker Outputs	2	2	2	2	1	•
Discrete Outputs (All Channels)	•	•	•	•	•	•
A+B (Parallel)	•	•	•	•	•	•
A/B or A+B						•

Integrated Amplifiers & Receivers Specifications

	A-607R	A-509R	A-307R	A-209R	A-109	SX-209RDS
AMPLIFIER SECTION						
Power Output						
DIN (1 kHz, 4 Ω)	120 W x 2	90 W x 2	80 W x 2	60 W x 2		50 W x 2
DIN (1 kHz, 8 Ω)	75 W x 2	60 W x 2	55 W x 2	45 W x 2	40 W x 2	
Continuous Power Output						
20 — 20,000 Hz, 4 Ω	90 W x 2*	65 W x 2*	65 W x 2*	45 W x 2*		
20 — 20,000 Hz, 8 Ω	80 W x 2*	45 W x 2*	45 W x 2*	35 W x 2*	30 W x 2*	40 W x 2
Dynamic Power Output (4/8 Ω)						80 W/50 W
Total Harmonic Distortion (20 — 20,000 Hz, 8 Ω, at —3 dB)	0.06 %*	0.05 %*	0.08 %*	0.08 %*	0.08 %*	0.09 %
Input (Sensitivity/Impedance)						
PHONO (MM)	2.8 mV/50 kΩ	2.8 mV/50 kΩ	2.8 mV/50 kΩ	2.8 mV/50 kΩ	2.8 mV/50 kΩ	2.5 mV/47 kΩ
CD, TUNER, AUX, TAPE	200 mV/50 kΩ	200 mV/50 kΩ	200 mV/50 kΩ	200 mV/50 kΩ	200 mV/50 kΩ	
CD, LINE, TAPE, VCR, LD (LDP)						200 mV/47 kΩ
Frequency Response						
CD, TUNER, AUX, TAPE	5 — 100,000 Hz* +0 dB, —3 dB	5 — 100,000 Hz* +0 dB, —3 dB	5 — 100,000 Hz* +0 dB, —3 dB	5 — 100,000 Hz* +0 dB, —3 dB	5 — 100,000 Hz* +0 dB, —3 dB	
CD, LINE, TAPE						5 — 100,000 Hz +0 dB, —3 dB
Signal-to-Noise Ratio (DIN; continuous rated power output/50 mW)						
PHONO (MM)	71 dB/67 dB*	71 dB/67 dB*	71 dB/67 dB*	71 dB/67 dB*	71 dB/67 dB*	67 dB/61 dB*
CD, TUNER, AUX, TAPE	95 dB/71 dB*	95 dB/71 dB*	91 dB/71 dB*	91 dB/71 dB*	91 dB/71 dB*	
CD, LINE, TAPE						82 dB/62 dB
FM TUNER SECTION						
Usable Sensitivity (Mono)						14.2 dBf (1.4 μV, 75 Ω)
Sensitivity (DIN)						
Mono (26 dB S/N, 75 Ω)						1.0 μV
Stereo (46 dB S/N, 75 Ω)						50 μV
Signal-to-Noise Ratio						
Mono/Stereo (DIN)						62 dB/58 dB
Stereo Separation (1 kHz)						40 dB
MISCELLANEOUS						
Power Requirements	220 — 230 V, 50 — 60 Hz	220 — 230 V, 50 — 60 Hz	220 — 230 V, 50 — 60 Hz	220 — 230 V, 50 — 60 Hz	220 — 230 V, 50 — 60 Hz	220 — 230 V, 50 — 60 Hz
Power Consumption	220 W	160 W	140 W	130 W	80 W	370 W (max)
Dimensions (W x H x D)	420 x 128 x 335 mm	420 x 128 x 335 mm	420 x 114 x 307 mm	420 x 114 x 307 mm	420 x 114 x 307 mm	420 x 140 x 313 mm
Weight	7 kg	6.9 kg	5.9 kg	4.7 kg	4.3 kg	5.4 kg

* Direct switch on

** On EIA test signal

Cassette Decks Features

	CT-W806DR	CT-W706DR	CT-W606DR	CT-W505R	CT-W208R	CT-S230
WIDE-RANGE TECHNOLOGY						
20-bit A/D-D/A Converter	•	•	•			
Legato Link Conversion	•	•				
MECHANICAL FEATURES						
Centre Mount Design						•
AUDIO FEATURES						
Digital Noise Reduction	•	•	•			
FLEX (Frequency Level Expander)	• (digital)	• (digital)	• (digital)	•		•
ALCA (Auto Level Control with Tape Analysis)	• (digital)			•		
TDNS (Tape Duplication Noise Suppressor)	• (digital)	• (digital)	• (digital)	•		
Super Auto BLE XD	• (digital)	• (digital)	• (digital)			
Auto BLE				•		
Dolby Noise Reduction	B/C	B/C	B/C	B/C	B/C	B/C
Dolby HX Pro	•	•	•	•		
LOW-NOISE FEATURES						
Display Off Switch						•
ANTI-RESONANCE AND ANTI-VIBRATION DESIGNS						
Honeycomb Chassis	•	•	•	•	•	•
CONVENIENCES						
Double Cassette Conveniences	•	•	•	•	•	
Auto-Reverse (R = Record, P = Play)	Deck I/II (R/P)	Deck II (R/P)/I (P)	Deck II (R/P)/I (P)	Deck II (R/P)/I (P)	Deck II (R/P)/I (P)	
Digital Synchro (O = Optical)	• (O)					
CD-Deck Synchro	•	•	•	•		
Powered Loading/Eject	•	•				
Timer Record/Play (Timer Optional)	•					
Relay Record/Play (R = Record, P = Play)	• (R/P)	• (P)	• (P)	• (P)	• (P)	
Parallel Recording	•					
Normal/High-Speed Dubbing	•	•	•	•	•	
Last Memory	•	•	•	•		
Music/Skip Search	•	•	•	•	•	•
Auto Space Rec Mute	•	•	•	•	•	•
Headphone Output (V = with Volume Control)	•	•	•	•		
SR (System Remote) Terminal	•	•	•	•	•	•
Microphone Input	•					
DISPLAY						
Electronic Counter	2-Mode	2-Mode	2-Mode	2-Mode		2-Mode
Fluorescent Peak-Hold Level Meter	•	•	•	•	• (LED)	•

Cassette Decks Specifications

	CT-W806DR	CT-W706DR	CT-W606DR	CT-W505R	CT-W208R	CT-S230
Number of Motors	4	4	2	2	2	1
Type of Heads						
Playhead Head		1	1	1	1	
Recording/Playhead Head	2	1	1	1	1	1
Erasing Head	2	1	1	1	1	1
Wow and Flutter	WRMS DIN					
	0.09 % ±0.19 %	0.09 % ±0.19 %	0.09 % ±0.19 %	0.09 % ±0.19 %	0.09 % ±0.19 %	0.07 % ±0.18 %
Frequency Response (–20 dB)						
Type IV (Metal Tape)	2 – 20,000 Hz	20 – 20,000 Hz	20 – 20,000 Hz	20 – 16,500 Hz	20 – 16,500 Hz	20 – 18,000 Hz
Type II (Chrome Tape)	20 – 19,000 Hz	20 – 19,000 Hz	20 – 19,000 Hz	20 – 16,000 Hz	20 – 16,000 Hz	20 – 17,000 Hz
Type I (Normal Tape)	20 – 18,000 Hz	20 – 18,000 Hz	20 – 18,000 Hz	20 – 16,000 Hz	20 – 16,000 Hz	20 – 17,000 Hz
Signal-to-Noise Ratio						
Digital NR (with Dolby B/C NR)	90 dB	90 dB	90 dB			
Digital NR (without Dolby NR)	82 dB	82 dB	82 dB			
Digital NR/Dolby NR Off	57 dB	57 dB	57 dB	57 dB	57 dB	57 dB
Power Requirements	220 – 230 V, 50 – 60 Hz	220 – 230 V, 50 – 60 Hz	220 – 230 V, 50 – 60 Hz	220 – 230 V, 50 – 60 Hz	220 – 230 V, 50 – 60 Hz	220 – 230 V, 50 – 60 Hz
Power Consumption	25 W	19 W	19 W	17 W	16 W	16 W
Dimensions (W x H x D)	420 x 125 x 250 mm	420 x 125 x 250 mm	420 x 125 x 250 mm	420 x 125 x 250 mm	420 x 125 x 250 mm	420 x 125 x 280 mm
Weight	4.7 kg	4.4 kg	4.4 kg	4 kg	3.8 kg	3.5 kg



PL-990

FULL AUTOMATIC STEREO TURNTABLE

• Full automatic operation : To provide easy hands-off operation • Low-mass straight tone arm : Highly sensitive and resistant to resonance, track records better • Precision DC servo motor : Pioneer Stable Hanging Rotor ends spindle wobble for smoother and more accurate platter rotation • Universal-type cartridge connector • Phono EQ included • Dimensions (W X H x D) : 420 x 100 x 342 mm • Weight : 2.65kg



GR-209

7-BAND GRAPHIC EQUALISER

• 7-band equalisation • LEDs in slider tips • Equalisation on/off switch • Dimensions (W X H x D): 420 x 60 x 221 mm • Weight: 2.2 kg

MiniDisc Features

	MJ-D508
DIGITAL FEATURES	
Legato Link Conversion	•
RECORDING FUNCTIONS	
Recording Volume Control	
Analogue	• (single)
Digital	• (full fs)
Fader (5 sec.)	• (full fs)
Digital REC Volume Memory	•
Sampling Rate Converter	•
Advanced Parameter Processing	•
Digital NR (Noise Reduction)	•
Monaural Long Time Mode	•
Level Synchro Recording (1-Track/All)	•
Space Cut	•
Automark (3-step)	•
Recovery Recording (6 sec.)	•
Timer Recording	•
PLAYBACK FUNCTIONS	
Digital NR (Noise Reduction)	•
Fader (5 sec.)	•
DAC Mode (Digital Volume/Digital NR)	•
Monaural x 2 Playback	•
Time Skip (60/15 sec.)	•
Medley Playback (Fade-out: 2 sec/Cut: 10 sec.)	•
Programme Play (30-Track)	•
Random Play	•
Repeat Play (1/All/A-B)	•
A-B Repeat	•
Timer Play (Fader/Programme)	•
EDIT FUNCTIONS	
Title Input (Name Input)	• (40 x 3 names)
Move (Track/Programme)	•
Combine (Track/A-B)	•
Divide	•
Erase (All/1-track/A-B)	•
Undo	•
UTOC Write	•
TERMINALS	
Analogue Input (RCA Pin Jack)	1
Digital Input (Optical/Coaxial)	1/1
Analogue Output (RCA Pin Jack)	1
Digital Output (Optical)	1
Headphone Output (with Volume)	1

Tuners Features

	F-208RDS	F-104
AUDIO FEATURES		
RF Attenuator	•	•
FM Mono/Stereo Switch	•	•
ANTI-RESONANCE AND ANTI-VIBRATION DESIGNS		
Large Insulators	•	•
CONVENIENCES		
Rotary Tuning	•	
Random Preset Stations	30	36
Class Memory	•	
Memory Scan	•	
4-Letter Station Name Memory	• (30)	
Direct Access Tuning	•	
SR (System Remote) Terminal	•	•

Tuners Features

	F-208RDS	F-104
FM TUNER SECTION		
Usable Sensitivity (Mono)	14.2 dBf (1.4 µV, 75 Ω)	12.7 dBf (1.2 µV, 75 Ω)
Sensitivity (DIN)		
Mono (26 dB S/N 75 Ω)	1.0 µV	1.0 µV
Stereo (46 dB S/N 75 Ω)	35 µV	35 µV
Signal-to-Noise Ratio		
Mono/Stereo (DIN)	62 dB/58 dB	62 dB/60 dB
Alternate Channel Selectivity		
±400 Hz	70 dB	
±300 Hz		60 dB
Stereo Separation (1 kHz)	40 dB	40 dB
MISCELLANEOUS		
Power Requirements	220 — 230V, 50 — 60Hz	220 — 230 V, 50 — 60 Hz
Power Consumption	15W	10 W
Dimensions (W x H x D)	420 x 105 x 294 mm	420 x 75.5 x 284 mm
Weight	3.5 kg	2.6 kg

MiniDisc Specifications

JD-M300 CD MAGAZINE



- 12 cm CD Multi-Disc Magazine

	MJ-D508
Frequency Response	8 — 20,000 Hz
Signal-to-Noise Ratio (EIAJ)	100 dB
Power Requirements	220 — 230 V 50 — 60 Hz
Power Consumption	15 W
Dimensions (W x H x D)	420 x 105 x 294 mm
Weight	3.5 kg

Speakers Features

	S-H509V	S-H309V	S-H309V-W	S-H210V	CS-9070	CS-7070	CS-5070	CS-3070
Enclosure	Rear-duct bass-reflex tall boy type	Front-duct bass-reflex tall boy type	Front-duct bass-reflex tall boy type	Enclosed bookshelf type	Rear-duct bass-reflex bookshelf type	Rear-duct bass-reflex bookshelf type	Rear-duct bass-reflex bookshelf type	Rear-duct bass-reflex bookshelf type
Speakers	Woofer	14 cm cone type (x3)	14 cm cone type (x2)	13 cm cone type (x2)	30 cm cone type	25 cm cone type	20 cm cone type	20 cm cone type
	Midrange				7.7 cm cone type	7.7 cm cone type	7.7 cm cone type	7.7 cm cone type
	Tweeter	2.5 cm dome type	2.5 cm dome type	2.5 cm dome type	6.6 cm cone type	6.6 cm cone type	6.6 cm cone type	6.6 cm cone type
Impedance	8 Ω	8 Ω	8 Ω	8 Ω	8 Ω	8 Ω	8 Ω	8 Ω
Frequency Range	30 — 35,000 Hz	35 — 35,000 Hz	35 — 35,000 Hz	50 — 20,000 Hz	33 — 20,000 Hz	35 — 20,000 Hz	40 — 20,000 Hz	45 — 20,000 Hz
Sensitivity (1 m/W)	90 dB/W	90 dB/W	90 dB/W	90 dB/W	92 dB/W	90 dB/W	90 dB/W	90 dB/W
Operation power to get 96 dB SPL at 1 m distance (DIN)	4 W	4 W	4 W	4 W	2.5 W	4 W	4 W	4 W
Music Power (DIN)	100 W	80 W	80 W	80 W	220 W	190 W	140 W	120 W
Dimensions (W x H x D)	251 x 1039 x 422 mm (with base) 185 x 1000 x 390 mm (without base)	184 x 900 x 318 mm	184 x 900 x 318 mm	166 x 612 x 188 mm	385 x 748 x 287 mm	334 x 695 x 273 mm	298 x 624 x 243 mm	258 x 540 x 234 mm
Weight	18.5 kg	10 kg	10 kg	4.2 kg	12 kg	10.5 kg	8.3 kg	6.1 kg

NS Series Features

	NS-F10	NS-9	NS-8
SYSTEM			
"One-Touch Play"			
STEREO CD RECEIVER (CD TUNER, POWER AMPLIFIER)	XC-F10/M-F10	XC-L77	XC-L77
Amplifier section	M-F10		
Power [Front (RMS)]	30 W x 2	30 W x 2	30 W x 2
Power [Subwoofer (RMS, 70 Hz)]	50 W	50 W	50 W
Subwoofer level control	• (3-step)	• (3-step)	• (3-step)
Bass/Treble control	•	•	•
L/R balance control	•	•	•
Tuner section	XC-F10		
RDS tuner	•	•	•
Band (FM/AM)	•	•	•
Presets	30	24	24
Timer	• (3-mode)	• (3-mode)	• (3-mode)
CD Player section	XC-F10		
Mechanism	Self-chuck Type	Single tray	Single tray
Random/Repeat Play	•	•	•
PGM No.	24	24	24
Optical digital output	•	•	•
Separate Display		•	•
Main operation buttons		•	•
Dimmer control		•	•
Remote control sensor		•	•
CD RECORDER	PDR-F10	PDR-L77	PDR-L77
Applicable Discs	CD/CD-R/CD-RW	CD/CD-R/CD-RW	CD/CD-R/CD-RW
D/A Converter	Digital Filter DAC	Digital Filter DAC	Digital Filter DAC
Sampling Rate Converter	•	•	•
Erase CD-RW disc with 5 erase modes	•	•	•
Digital Recording Level Control (dB)	• (-86 ~ +20)	• (-48 ~ +12)	• (-48 ~ +12)
Programmed Play	• (24-step)	•* (24-step)	•* (24-step)
Manual/Track Search	•	•*	•*
MINIDISC RECORDER		MJ-L77	MJ-L77
Mechanism		Single slot-in	Single slot-in
Disc and song title input		•	•
Edit modes		•	•
CD/MD Synchro		•	•
Random/Repeat Play		•	•
PGM No.		24	24
Optical digital input		•	•
CASSETTE DECK	CT-F10	CT-L77	CT-L77
Horizontal loading	Slot-in	•	•
Single Auto-Reverse	•	•	•
Dolby B NR	•	•	•
CD/Tape Synchro Rec	•	•	•
Auto-tape selector (Normal/Chrome)	•	•	•
Music Search	•	•	•
SATELLITE AND SUBWOOFER SPEAKER SYSTEM	S-F10-LRW	S-L9-LRW	S-L8-LRW
System	3D speaker system	3D speaker system	3D speaker system
Frequency Range			
Satellite	125 — 20,000 Hz	125 — 20,000 Hz	125 — 20,000 Hz
Subwoofer	22 — 3,000 Hz	25 — 3,000 Hz	25 — 3,000 Hz
Music Power (DIN)			
Satellite	30 W	30 W	30 W
Subwoofer	50 W	50 W	50 W

* With remote control

NS Series Specifications

	NS-F10	NS-9	NS-8
STEREO CD RECEIVER			
STEREO CD TUNER/STEREO POWER AMPLIFIER	XC-F10/M-F10	XC-L77	XC-L77
Amplifier section	M-F10		
Continuous power output			
Stereo			
(RMS)	30 W x 2	30 W x 2	30 W x 2
(DIN)	23 W x 2	22 W x 2	22 W x 2
(DIN MUSIC)		40 W x 2	40 W x 2
Subwoofer (RMS) (DIN)	50/43 W	50/- W	50/- W
Power consumption: In use/standby	127/0.9 W	98/- W	98/- W
Dimensions (W x H x D)	190 x 80 x 267 mm		
Net weight	4 kg		
Tuner section	XC-F10		
FM Usable Sensitivity (IHF Mono)	18.3 dBf (2.2 µV, 75 Ω)		
FM S/N ratio (DIN) (Mono/Stereo)	66/60 dB		
CD Player section	XC-F10		
Frequency Response	4 — 20,000 Hz	4 — 20,000 Hz	4 — 20,000 Hz
S/N ratio (EIAJ)	110 dB	110 dB	110 dB
Dimensions (W x H x D)	170 x 268 x 66 mm	220 x 75 x 318 mm	220 x 75 x 318 mm
Net weight	1.5 kg	4 kg	4 kg
Separate Display			
Cable		1.5 m	1.5 m
CD RECORDER	PDR-F10	PDR-L77	PDR-L77
Frequency Response	2 — 20,000 Hz	2 — 20,000 Hz	2 — 20,000 Hz
S/N ratio: Rec/Play (EIAJ)	92/110 dB	88/110 dB	88/110 dB
Dynamic Range: Rec/Play	92/98 dB		
Dimensions (W x H x D)	205.5 x 268 x 68 mm	220 x 70 x 310 (334 with adapter) mm	220 x 70 x 310 (334 with adapter) mm
Net weight	2 kg	3 kg	3 kg
MINIDISC RECORDER			
Frequency Response		20 — 20,000 Hz	20 — 20,000 Hz
S/N Ratio (EIAJ)		98 dB	98 dB
Power consumption		18 W	18 W
Dimensions (W x H x D)		220 x 75 x 310 mm	220 x 75 x 310 mm
Net weight		2.6 kg	2.6 kg
CASSETTE DECK	CT-F10	CT-L77	CT-L77
Wow & Flutter (WRMS)	0.07 % (WRMS), ± 0.14 (DIN)	0.08 % (WRMS)	0.08 % (WRMS)
Frequency Response			
Type I (Normal) (± 6 dB)	20 — 16,000 Hz	20 — 16,000 Hz	20 — 16,000 Hz
Type II (Chrome) (± 6 dB)	20 — 16,000 Hz	20 — 16,000 Hz	20 — 16,000 Hz
S/N ratio			
Dolby NR OFF	56 dB	56 dB	56 dB
Dolby B NR ON (at 5 kHz)	improved by 10 dB	improved by 10dB	improved by 10dB
Dimensions (W x H x D)	170 x 268 x 66 mm	220 x 75 x 310 mm	220 x 75 x 310 mm
Net weight	1.5 kg	2.2 kg	2.2 kg
SATELLITE AND SUBWOOFER SPEAKER SYSTEM	S-F10-LRW	S-L9-LRW	S-L8-LRW
Speakers	Satellite & subwoofer system	Satellite & subwoofer system	Satellite & subwoofer system
Frequency Range			
Satellite	125 — 20,000 Hz	125 — 20,000 Hz	125 — 20,000 Hz
Subwoofer	22 — 3,000 Hz	25 — 3,000 Hz	25 — 3,000 Hz
Sensitivity (1 m/W)			
Satellite	87 dB	87 dB	87 dB
Subwoofer	83 dB	83 dB	83 dB
Music Power (DIN)			
Satellite	30 W	30 W	30 W
Subwoofer	50 W	50 W	50 W
Dimensions (W x H x D)			
Satellite	130 x 265 x 65 mm	126 x 250 x 68.5 mm	123 x 240 x 70 mm
Subwoofer	190 x 282.5 x 253 mm	150 x 340 x 304.5 mm	150 x 340 x 304.5 mm
Net weight (kg)			
Satellite	0.7 kg	0.8 kg	0.6 kg
Subwoofer	3.5 kg	4.7 kg	4.7 kg
OPTIONAL CABLE	JC-F10	JC-L7	JC-L7
Cable Length	5 m	5 m	5 m

Hi-Fi Systems Features

	<i>IS-21T</i>	<i>IS-21MD</i>	<i>N-A6800RDS</i>	<i>N-A4800RDS</i>	<i>X-MT2000</i>
Timer	• (3-mode)	• (3-mode)	• (3-mode)	• (3-mode)	• (2-mode)
Auto Function	•	•	•	•	•
A.S.E.S. (Auto Synchro Editing System)	•	•	•	•	•
AMPLIFIER SECTION	M-IS21	M-IS21			
Power (RMS, 1 kHz, 6 Ω)	100 W x 2	100 W x 2	140 W x 2	100 W x 2	20 W x 2
Stereo Wide	•	•			
Sound Morphing			•	•	
Bass/Treble Control	• (± 4-step)	• (± 4-step)			• (± 8-step)
L/R Balance Control	•	•			
Analogue Power Output Meter	•	•			
TUNER SECTION	XC-IS21T	XC-IS21MD			
RDS Tuner	•	•	•	•	•
Band (FM/AM)	•	•	•	•	•
Presets	24	24	24	24	24
Auto Tuning	•	•	•	•	•
CD PLAYER SECTION	XC-IS21T	XC-IS21MD			
Mechanism	Vertical	Vertical	3-disc	3-disc	3-disc
Motorised Door	•	•			
Random/Repeat Play	•/•	•/•	•/•	•/•	•/•
PGM No.	24	24	32	32	32
Optical Digital Output	•		•		
CASSETTE DECK SECTION	XC-IS21T				
Horizontal Loading	•				
Single Auto-Reverse	•				
Double Auto-Reverse			•	•	
Reverse Mode Select	•				
Dolby B NR	•		•		
Music Search	•		•	•	
Tape Selector (CrO2)	•		•		
Tape Counter	•		•	•	
Auto Record Level Control	•		•	•	
MINI DISC RECORDER SECTION		XC-IS21MD			
Mechanism		Slot-in			
Disc Title Memory		•			
Edit modes		•			
Mono LP		•			
Random/Repeat Play		•/•			
PGM No.		24			
Auto Record Level Control		•			
Digital/Analogue Input Selector		•			
FS Converter		•			
Optical Digital Input		•			
SPEAKERS	S-IS21	S-IS21	S-A6800	S-A4800	
3-Way Speaker	•	•	•	•	
Full-Range Speaker					•
Woofer/Midrange/Tweeter Size	17/6.6/2 cm	17/6.6/2 cm	20/6.6/2 cm	16/5.2/2 cm	8.7 cm
Maximum Power	100 W	100 W	150 W	100 W	20 W
OPTIONAL CASSETTE DECK	CT-IS21	CT-IS21			
Horizontal Loading	•	•			
Single Auto-Reverse	•	•			
Reverse Mode Select	•	•			
Dolby B NR	•	•			
Music Search	•	•			
Auto Record Level Control	•	•			
Timer (3-mode)	•*	•*			
A.S.E.S. (Auto Synchro Editing System)	•*	•*			
Tape Selector (Cr O2)	•	•			

* When connected to IS-21T/IS-21MD

Hi-Fi Systems Specifications

	IS-21T	IS-21MD	N-A6800RDS	N-A4800RDS	X-MT2000
AMPLIFIER SECTION					
Continuous Power Output	M-IS21	M-IS21			
Front RMS (1 kHz, 10 %, 6 Ω)	100 W x 2	100 W x 2	140 W x 2	100 W x 2	20 W x 2
DIN (1 kHz, 1 %, 6 Ω)	65 W x 2	65 W x 2	85 W x 2	65 W x 2	15 W x 2
DIN Music	150 W	150 W	220 W	146 W	36 W
Power Consumption: In use/standby	120/1 W	120/1 W	165/1 W	125/1 W	52/1 W
Dimensions (W x H x D)	150 x 300 x 233 mm	150 x 300 x 233 mm	270 x 320 x 339 mm	270 x 320 x 339 mm	160 x 170 x 323.5 mm
Net Weight	4 kg	4 kg	8.8 kg	8.3 kg	4.8 kg
TUNER SECTION					
FM Usable Sensitivity (IHF Mono) (1.4 μV, 75 Ω)	XC-IS21T	XC-IS21MD			
S/N ratio (DIN) (Mono)	14.3 dBf	14.3 dBf	14.3 dBf	14.3 dBf	14.3 dBf
S/N ratio (DIN) (Mono)	60 dB	60 dB	60 dB	60 dB	60 dB
CD PLAYER SECTION					
Frequency Response	XC-IS21T	XC-IS21MD			
S/N ratio (EIAJ)	20 — 20,000 Hz	20 — 20,000 Hz	20 — 20,000 Hz	20 — 20,000 Hz	20 — 20,000 Hz
S/N ratio (EIAJ)	96 dB	96 dB	96 dB	96 dB	90 dB
Dimensions (W x H x D)	205 x 300 x 237 mm				
Net Weight	2.9 kg				
CASSETTE DECK SECTION					
Wow & Flutter (WRMS)	XC-IS21T				
Frequency Response (-20 dB)	0.1 %				
Type I (Normal) (± 6 dB)	35 — 14,000 Hz		35 — 14,000 Hz	35 — 14,000 Hz	
Type II (Chrome) (± 6 dB)	35 — 15,000 Hz		35 — 15,000 Hz		
S/N ratio Dolby NR OFF	56 dB		56 dB		
Dolby NR ON (B-type at 5 kHz)	improved by 10 dB		improved by 10 dB		
MINI DISC RECORDER SECTION					
Frequency Response		XC-IS21MD			
S/N ratio (EIAJ)		20 — 20,000 Hz			
Dimensions (W x H x D)		90 dB			
Net weight		205 x 300 x 237 mm			
SPEAKERS					
Cone Size: Woofer/Midrange/Tweeter	S-IS21	S-IS21	S-A6800	S-A4800	
Frequency Range	17/6.6/2 cm	17/6.6/2 cm	20/6.6/2.4 cm	16/5.2/2 cm	8.7 cm
Sensitivity (1 m/W)	38 — 20,000 Hz	38 — 20,000 Hz	38 — 20,000 Hz	40 — 20,000 Hz	70 — 20,000 Hz
Maximum Power	85 dB/W	85 dB/W	87 dB/W	85 dB/W	82 dB/W
Dimensions (W x H x D)	100 W	100 W	150 W	100 W	20 W
Net Weight	210 x 366.5 x 265 mm	210 x 366.5 x 265 mm	265 x 320 x 280 mm	230 x 320 x 253.5 mm	130 x 170 x 194 mm
	4 kg	4 kg	5.1 kg	3.7 kg	1.4 kg
OPTIONAL CASSETTE DECK					
Wow & Flutter (WRMS)	CT-IS21	CT-IS21			
Frequency Response (-20 dB)	0.1 %	0.1 %			
Type I Normal (± 6 dB)	35 — 14,000 Hz	35 — 14,000 Hz			
Type II (Chrome) (± 6 dB)	35 — 15,000 Hz	35 — 15,000 Hz			
S/N ratio Dolby NR OFF	56 dB	56 dB			
Dolby NR ON (B-type at 5 kHz)	improved by 10 dB	improved by 10 dB			
Dimensions (W x H x D)	210 x 75 x 270 mm	210 x 75 x 270 mm			
Net Weight	2.6 kg	2.6 kg			
OPTIONAL ACCESSORY CASE					
Dimensions (W x H x D)	AC-IS21	AC-IS21			
Net Weight	165 x 85 x 300 mm	165 x 85 x 300 mm			
	1 kg	1 kg			

WE TAKE FUN SERIOUSLY...

DIGITAL BROADCASTING RECEIVERS



Pioneer has been producing Digital Set Top Boxes since 1996 for both OEM (Original Equipment Manufacturer) and Retail markets. These have been supplied to the **CANAL+** group, including such countries as France, Spain, Italy, Poland, The Netherlands and some French Island Territories. Pioneer will also start to supply UK digital terrestrial service provider, **ON DIGITAL**, during the course of year 2000. Pioneer's Digital Broadcasting Receivers (DBR series) have already obtained a reputation for high quality and proven reliability within the industry.



More details? Check out: www.pioneer-eur.com

DVD-ROM



Pioneer

- leads the European market in DVD-ROM drives for PC manufacturers with over 1.4 million drives sold in 1999. This equals a 23% market share*.
- is market leader in DVD-R technology for industrial applications.

*Source: IDC.



More details?
Check out: www.pioneer-eur.com

IN-CAR ENTERTAINMENT PRODUCTS

Pioneer

- is the clear market leader in the car speaker after market with more than 30% market share in several European countries.
- leads the European market in the car CD/Tuner category, the most important growing product category.



More details? Check out: www.pioneer-eur.com

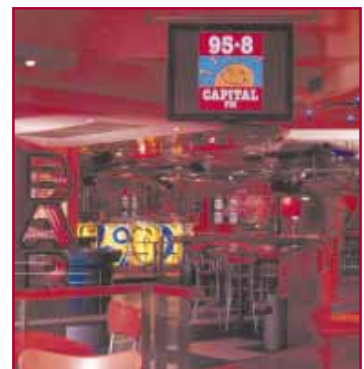
PLASMA SCREENS

Pioneer

- leads the European plasma display market with a 19% market share* in 1999.
- is among the first and one of the few plasma display manufacturers in the world.
- offers the only 50" XGA resolution plasma screen - ideal for displaying detailed data as well as superb quality video.
- offers one of the few 40" 4:3 aspect ratio plasma screens available - ideal for displaying computer-generated content.

*Source: DTC

More details? Check out: www.pioneer-plasma.com



Pioneer

With Pioneer, fun is serious business. Since 1938 we've proven true to our name, as our leadership has kept us at the forefront of breaking developments. Pioneer standouts range from car audio products, the professional DJ series, plasma screens and DVD-ROM drives that lead the European market, to the production of set top boxes enabling reception of digital broadcasting. Pioneer is also often recognised for their outstanding products with prestigious awards from EISA and ECAP. Be it for home entertainment, in-car or industrial applications, Pioneer's imagination takes you to new levels of fun and excitement.

DJ PRODUCTS

The Pioneer DJ series is the equipment of choice for many of the world's top DJs. The range offers an array of innovative features with products that widen the creative scope of the DJ's set.

Pioneer introduced some of the industry's first DJ features such as Master Tempo, Fader Start and Back Cue, Digital Jog Break, Beat Sampling and Auto Mixing which have stretched the boundaries of DJ creativity.



More details? Check out: www.djsounds.com

AWARDS



EISA AUDIO RECORDER OF THE YEAR 2000-2001

"The Pioneer PDR-W739 includes a CD recorder and CD changer in one single unit. It allows you to choose your favourite songs from three CDs and make your own compilations on a CD-R or CD-RW. Program tracks from three CDs, and then, at the press of a button, the PDR-W739 records at double speed. It features a digital level control, a very informative display and remote control. Extremely easy to operate, the Pioneer PDR-W739 should ensure that those who have never used a CD-R player will make light work of it."



ECAP INNOVATION OF THE YEAR 1999-2000



The OEL display won the In Car Audio Innovation of the Year award in 1999 - 2000. In 2000, Pioneer has introduced more of these unique displays.



ECAP CD RECEIVER OF THE YEAR 1999-2000

The DEX-P99R won the Car Audio CD Receiver of the Year award for 1999-2000.



GREAT BRITAIN: PIONEER GB Limited
Pioneer House, Hollybush Hill
Stoke Poges, Slough
Buckinghamshire SL2 4QP.
Tel. +44/1753 789 789

<http://www.pioneer.co.uk>

ICELAND: BRÆDURNIR ORMSSON HF
Lágmúli 8, P.O. Box 8760
128 Reykjavik.
Tel. +354/55 32 800

IRELAND: AUDIO VISION IMPORT
John F. Kennedy Drive
Dublin 12.
Tel. +353/1 45 04 855

MALTA: CACHIA & GALEA Ltd.
Standard Bldgs., C. De Brockdorf Street
Msida MSD-02
Malta.
Tel. +356/33 38 61

REPUBLIC OF CYPRUS: KH. PAPASIAN (DISTRIBUTORS) Ltd.
240 Ledra Str.
P.O. Box 21607
1511 Nicosia.
Tel. +357/2 663 795

MILITARY: PIONEER ELECTRONICS DEUTSCHLAND GmbH
Military Sales Dept.
Hanns-Martin-Schleyer-Str. 35
47877 Willich
Germany.
Tel. +49/21 54 91 34 22

LATVIA: BALTIC MULTI MEDIA SIA
Kr Barona Iela 16/18
1050 Riga.

Tel. +371/761 01 11 (new office +371/728 62 96)

"Dolby", the double-D symbol, "Dolby Surround", "Pro Logic", "AC-3" and "Dolby Digital", are trademarks of Dolby Laboratories Licensing Corporation. "DTS" and "DTS Digital Surround" are trademarks of Digital Theater Systems, Inc. TruSurround Pioneer's Virtual Dolby Surround incorporates TruSurround technology under license from SRS Labs, Inc. Lucasfilm and THX are registered trademarks of Lucasfilm Ltd.

Infringement of copyright: Copying of prerecorded copyright material without appropriate authorisation or licence may be unlawful and you are advised to check the laws applicable in the jurisdiction to which you are subject.

Published by:

PIONEER EUROPE N.V.
HAVEN 1087, KEETBERGLAAN 1, B-9120 MELSELE
TEL. + 32(0) 3 570 05 11
Copyright 2000 by Pioneer Europe N.V.
All rights reserved.

<http://www.pioneer-eur.com>

Trade descriptions act:

Products offered for sale may differ from those described or illustrated in this brochure due to later production changes in specifications, components or place of manufacture. The contents of this general brochure are therefore not to be treated as representations as to the current availability of products as described. All products in this catalogue are not necessarily available in your country.

Your local Pioneer dealer

Pioneer

... i presume