

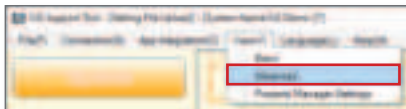
IXGW-LC-RY20

Programming Guide

The IXGW-LC-RY20 is a relay adaptor for the IXG Series IP multi-tenant system. This adaptor provides a Form C dry contact closure used for door release when paired with an IXG-DM7-HID entrance station. The programmed relay output will activate when door release is activated on the paired IXG-DM7-HID entrance station. This relay will not pair with a standard IX Series door station. This document covers programming the IXGW-LC-RY20.

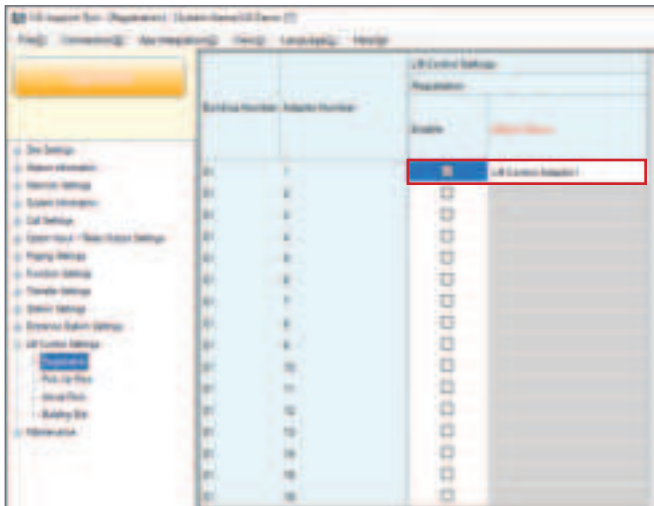
Registering and assigning outputs for the IXGW-LC-RY20

Open the IXG Support Tool, and open an existing system. Under **View(V)** change to **Advanced**.



1.1 - Select Advanced View

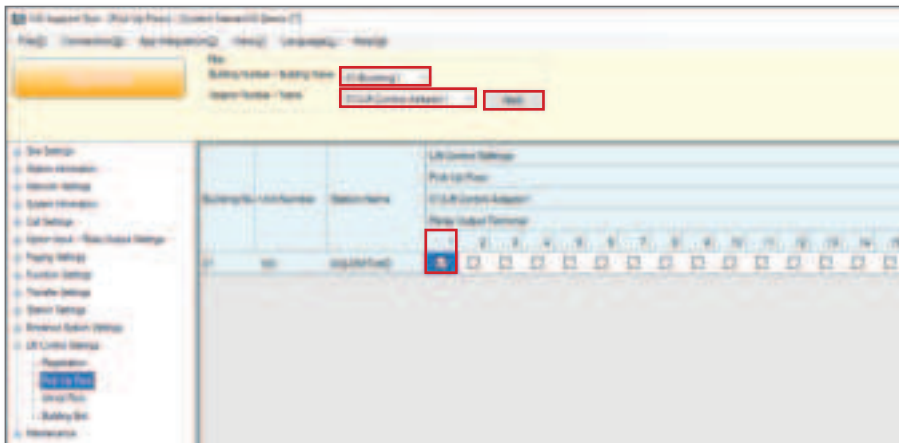
Click **View(V)** and click **Advanced**.



1.2 - Register Lift Control

Open **Lift Control Settings** and, click **Registration**.

Click the **Enable** check box for each IXGW-LC-RY20 that will be used. **Station Name** can be changed at this time.

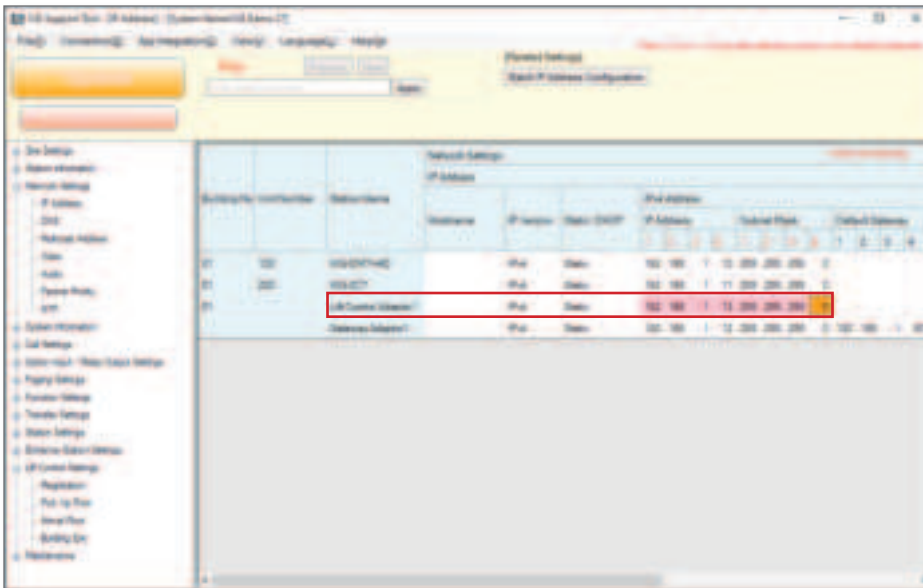


1.3 - Assigning Relay Output

Click **Pick Up Floor**.

In the **Filter** section, select the **Building Number / Building Name** from the drop down. Then select the **Adaptor Number / Name** from the drop down. Click **Apply**.

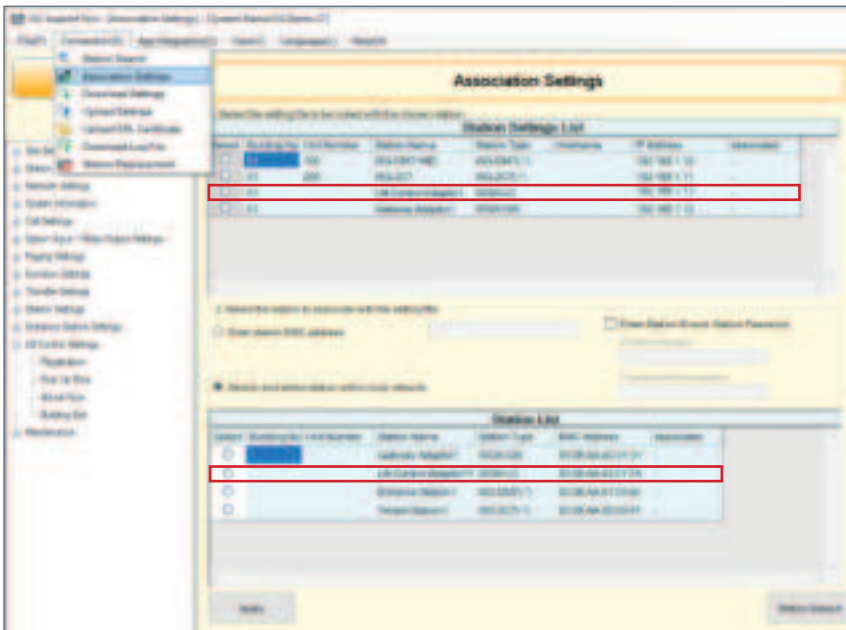
The relay section will appear. Click the desired **Relay Output Terminal** check box for each IXG-DM7-HID station.



1.4 - Assign IP Address

Open **Network Settings** and, click **IP Address**.

Enter the **IP Address** and **Subnet Mask**. Then click **Update**.



1.5 - Associate Station

Open **Connection** and click **Association Settings**.

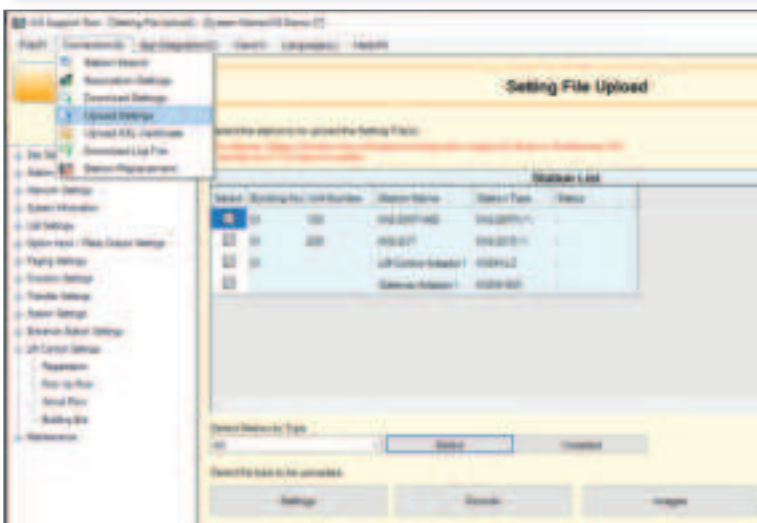
Select the Lift Control Adaptor from the **Station Settings** List and select the Lift Control Adaptor from the **Station List**. Then click **Apply**.

Repeat for remaining stations.

Note:



After Associating, the stations will reboot. This could take between 3 and 5 minutes depending on the station.



1.6 - Upload Settings

Open **Connection** and click **Upload Settings**.

Select all stations by clicking their respective check box in the **Select** column. Click **Settings**.

The **Status** column will verify if the upload was successful.