

A black and white photograph of a person from the chest down, wearing a dark sweater and dark pants. They are holding a white cane in their right hand. The background is blurred, suggesting an outdoor setting.

WeWALK

USER MANUAL

WeWALK



INTRODUCTION 2

FEATURES AT A GLANCE 2

WHAT’S INSIDE THE BOX? 2

COMPONENTS OF THE WEWALK SMART CANE 3

 ULTRASONIC SENSOR 4

 TACTILE BUTTONS 4

 SPEAKER AND MICROPHONE 4

 POWER BUTTON 4

 TOUCHPAD 4

 FRONT LED 4

 MICRO USB INPUT 4

GETTING STARTED 5

HOLDING AND USING THE WEWALK SMART CANE 6

 WALKING WITH WEWALK 6

FREQUENTLY ASKED QUESTIONS 8

SAFETY INFORMATION 10

 GENERAL SAFETY 10

 OPERATIONAL SAFETY 10

 BATTERY SAFETY 11

 MAINTENANCE 11

 POINTS TO BE CONSIDERED DURING TRANSPORT 12

 LIABILITY LIMITATION 12

 INTENDED USE 12

 COUNTRY RESTRICTIONS 13

 TROUBLESHOOTING 13

PRODUCT SPECIFICATIONS 14

 HARDWARE SPECIFICATIONS 14

 ELECTRICAL VALUES 14

 OTHER SPECIFICATIONS 15

 ENVIRONMENTAL CONDITION 15

 INPUTS/OUTPUTS 15

 SOFTWARE UPDATE 15

 POWER CONSUMPTION 16

WELCOME TO WeWALK

INTRODUCTION

At WeWALK, our mission is to provide our visually impaired community with a tool to get them anywhere, safely, effectively, and independently. Congratulations on your purchase of WeWALK Smart Cane and we thank you for joining us on this journey. We hope that it proves to be a valuable aid to your mobility. With care, your WeWALK will give you many years of trouble-free use. Please read this user guide carefully as it explains how to operate your WeWALK effectively.

We also strongly recommend orientation and mobility training to achieve the safety and independence you need before using your WeWALK,

You can reach the latest instructions from support.wewalk.io or write to us via info@wewalk.io.

FEATURES AT A GLANCE

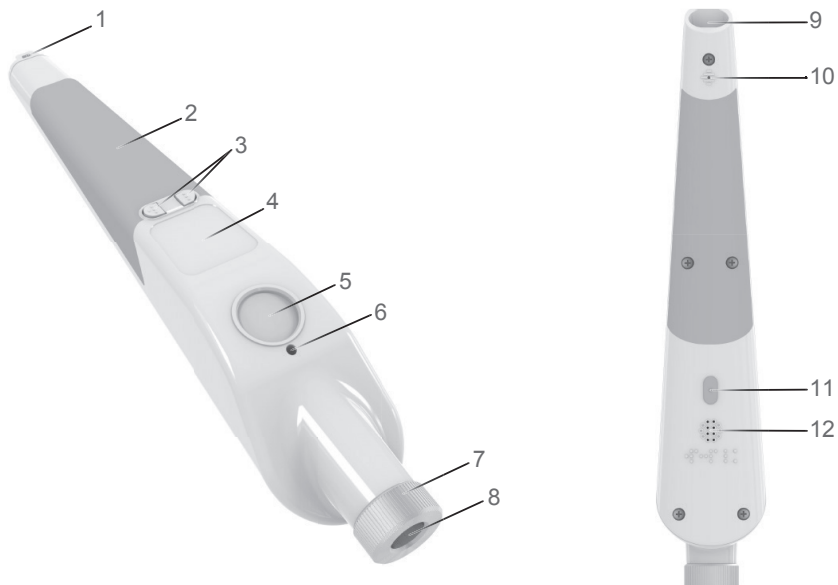
- 1. DETECT OBSTACLES:** WeWALK detects obstacles at head and chest level (such as low hanging tree branches and light poles) with its onboard ultrasonic sensor, warning you through vibrations.
- 2. GET NAVIGATION:** Get accessible and customizable turn-by-turn navigation.
- 3. LEARN WHAT'S AROUND YOU:** Quickly find, save, and navigate to new places around you.
- 4. ACCESS PUBLIC TRANSPORTATION INFORMATION:** Learn about nearby stops and timetables.
- 5. VOICE COMMANDS WITH AMAZON ALEXA (BETA):** Use Alexa with voice commands. You can ask for information on the weather, add something to your to-do list, or do anything that Alexa can do on an Alexa-enabled device.

WeWALK's capabilities are growing rapidly. You can always check our application and support.wewalk.io for new features!

WHAT'S INSIDE THE BOX?

- WeWALK's smart handle
- Folding white cane (with an adaptor to attach the handle)
- Charger (Adaptor and USB Cable)
- WeWALK bag
- A quick start guide in braille
- User manual
- Wrist strap

COMPONENTS OF THE WeWALK SMART CANE



1. Wrist strap hole
2. Soft-touch grip
3. Tactile buttons
4. Touchpad
5. Ultrasonic sensor
6. Front LED
7. White cane adaptor
8. Cane rest
9. Micro USB input
10. Microphone
11. Power button
12. Speaker

ULTRASONIC SENSOR

Your WeWALK uses an ultrasonic system to detect obstacles. Do not press on the ultrasonic sensor positioned at the front of the handle or try to manipulate it in any way. Any damage to this sensor may cause the product to perform poorly.

TACTILE BUTTONS

When the WeWALK is switched on and obstacles are detected, the two buttons will vibrate. It is important that you do not press hard on the buttons as this will reduce the vibration intensity. You should experiment with positioning your hands to get maximum sensitivity. The wearing of thick gloves is not recommended as this will also reduce the intensity of vibration feedback.

SPEAKER AND MICROPHONE

WeWALK has a speaker and microphone for audio feedback and voice commands.

POWER BUTTON

Use the power button to turn the WeWALK on or off.

TOUCHPAD

The touchpad works by sensing your finger movements and pressure. The touchpad is used to control the connected WeWALK smartphone app. Usage with gloves is not recommended as this may decrease the performance of the touchpad.

More information on gestures can be found in a separate section. To see other supported gestures and their functionalities, check support.wewalk.io or the tutorial tab on the WeWALK smartphone app.

FRONT LED

The front LED is used to improve your visibility to others in the dark and can be enabled or disabled as required. Additionally, the LED can be used as a visual reference to show that WeWALK is turned on.

MICRO USB INPUT

The micro USB input is used to charge the battery of your WeWALK device.

GETTING STARTED

1. CHARGE YOUR DEVICE:

Charge the WeWALK device for about 2 hours to ensure that you get started with a full charge. To charge WeWALK, plug the supplied cable's micro USB end into the micro USB input on the cane. Plug the USB end of the cable into the USB input on the power adapter. Then, plug the adapter into the mains socket. If there is not a suitable adaptor for your country inside the box, you can use any USB adaptor or micro USB charger (such as a smartphone charger) to charge WeWALK.

2. ATTACH THE DEVICE TO THE CANE:

Position the WeWALK device on top of the white cane with the adaptor, press down and rotate clockwise until tight, as if tightening a screw.

3. DOWNLOAD THE WEWALK APP:

To get started, download the WeWALK app from the App Store or Play Store. You can also use this link: www.wewalk.io/app

4. LOW VISION SETTINGS:

In the WeWALK app, customize settings like background color and text size to suit your accessibility preferences.

5. USE THE SERVICES THAT WEWALK OFFERS:

WeWALK app for the first time, you will be asked to grant permission for notification, Bluetooth, and location access. This will appear as a dialog box. We recommend enabling all of them to benefit from all features.

6. SIGN UP IN THE APP:

We will use the information you provide to learn your preferences for WeWALK Smart Cane and to keep you updated on the latest improvements. This is optional and none of your data will be shared with any other parties.

7. SWITCH ON WEWALK:

To switch your WeWALK on or off, press the power button and hold it down until the cane vibrates and plays the turning on-off sound. The power button is located underneath the device. Refer to the Components of the WeWALK section to check the exact position of this button.

8. CONNECT YOUR WEWALK SMART CANE TO YOUR SMARTPHONE:

a. Switch on WeWALK. WeWALK stays in pairing mode for 120 seconds and the LED blinks during this period. After this period, the device goes into standby mode and will need to be switched off and on again to pair.

b. Ensure your smartphone's Bluetooth is enabled. Then, launch the app and establish the Bluetooth connection with the WeWALK device by tapping on the "Connect WeWALK" button.

c. You will hear a sound after a successful connection.

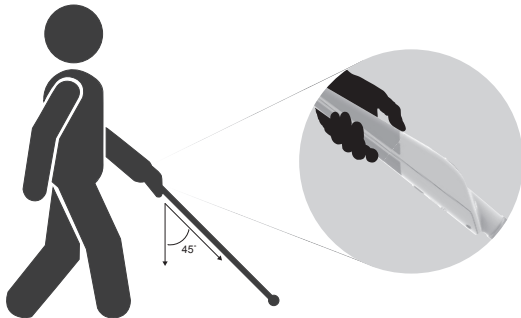
9. BEGIN WITH THE "TRAINING MODE":

We designed a training mode for you to learn how to use WeWALK. With this training, you will be able to practice using and holding the WeWALK Smart Cane.

HOLDING AND USING THE WeWALK SMART CANE

WeWALK should be held and used using regular cane technique and is not a replacement for good cane technique. WeWALK should be held in the 'handshake' hand position with the rounder part of the device sitting in the palm of the hand, and the thumb resting on the tactile buttons on top of the device. The tactile buttons, touchpad, and ultrasonic sensor should face forward and always be on top.

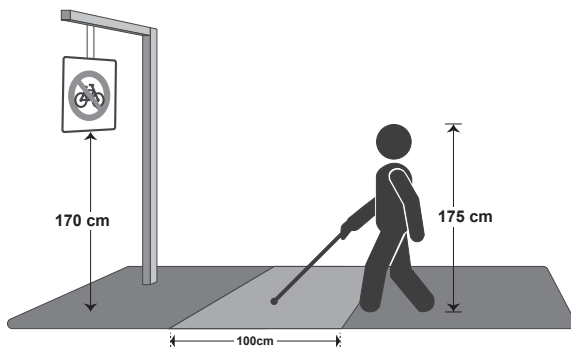
WALKING WITH WEWALK



The traditional white cane is used by moving the cane from side to side in a tapping or sliding motion where the next footstep will fall. This ensures that obstacles can be detected in the user's immediate vicinity by utilizing the tip of the cane to touch the obstacle. Additional obstacle detection is obtained via the ultrasonic sensors incorporated into the handle, thus giving more advanced warning to the user of obstacles in their path and between head and waist level.

When using WeWALK, it is imperative to use traditional white cane skills especially for locating drops such as curbs and steps, or tactile paving. Before you start using WeWALK, experiment with the various obstacle detection range options to find out the limits and capabilities of the product. Choose the length of the white cane according to your height.

WeWALK is designed to detect the obstacles between your head and waist level, so the obstacles in this range should be detected at a distance of at least 1 meter before hitting the obstacle. For example, a low-hanging sign is at a height of 170 cm and the user is 175 cm tall, so they might hit the obstacle. The green area indicates the detection area, at these distances the Smart Cane vibrates and warns the user about the obstacle.



When your WeWALK gives you an obstacle warning during normal use, you can gently swipe your device to the left and right to detect exactly where the obstacle is located, how wide the obstacle is and where the obstacle stops blocking your path. When you move your WeWALK to the right and left, you can perceive the objects that are in front of you and you can confirm the accuracy of the obstacle detection signal.

In the unlikely event that WeWALK's electronics fail while you are out, you will still be able to use it as a traditional white cane to reach your destination.

FREQUENTLY ASKED QUESTIONS

Can I fold and collapse my WeWALK Smart Cane like my regular cane?

Yes, you can also attach the supplied wrist strap to your WeWALK and place it in its carry bag to protect and transport it. As with regular cane technique, we do not recommend using WeWALK to walk with the wrist strap around your wrist. If the cane were to suddenly collide with an obstacle, this may exert excess force on your wrist.

1. Thread the thin loop of string through the wrist strap attachment hole.
2. After the loop is fully threaded, open it and pass the strap handle through the loop. Pull the remainder of the strap handle upwards to secure the wrist strap to the unit.
3. You can fold the cane and use the wrist strap of your WeWALK to bind them together. Be careful when folding/unfolding the cane because of the tension in the elastic cord.

Are there any obstacles/objects that WeWALK cannot detect?

It is not possible for WeWALK's ultrasonic sensor to detect drops at ground level such as stairs, curbs, and holes. It is therefore important to maintain good traditional cane skills when using WeWALK to locate drops. WeWALK may not detect soft fabrics or small obstacles at the limit of the range setting. WeWALK works best with hard surfaces as these provide a stronger ultrasonic echo. WeWALK can detect objects at a distance of between 80 and 165 cm from the ultrasonic sensor.

Is WeWALK suitable for use in rainy weather?

Heavy or torrential rain will stop your WeWALK from working properly and should be avoided. Prolonged or repeated exposure to water or heavy rain must be prevented as it may cause permanent water-damage to your WeWALK. If you are out with your WeWALK and are caught in heavy rain, you should immediately switch the cane off and cover it to protect it from heavy rain.

You can continue to use the WeWALK as a traditional white cane to navigate during the rain, but the obstacle detection functions will not be available whilst the device is covered. You can remove the cover, switch on your WeWALK and continue your journey as normal once the rain stops. If your cane does get wet, allow it to dry naturally in the open air at room temperature.

Which smartphones do you support?

The WeWALK App Runs on Android and iOS-based smartphones. Android based devices should have Android version 5.0 and above, iOS devices should have iOS version 10 and above. To learn more about the WeWALK app and its features, view the mobile application user guide at www.support.wewalk.io or check the training screen of the WeWALK app.

Which languages are available?

WeWALK supports English, Spanish, French, Arabic, Italian and Portuguese. Other languages will be added with updates. When a new language package is released, WeWALK will be updated over wireless connection via the mobile application.

What do the WeWALK Smart Cane sounds mean?

You can listen to all the WeWALK sounds and learn what they mean in the WeWALK app.

FREQUENTLY ASKED QUESTIONS

How can I manage WeWALK's services through the cane? What is the voice menu?

The voice menu allows you to use many of WeWALK's functions such as starting navigation and changing obstacle detection distance without touching your phone. The voice menu can only be used when WeWALK is connected to your phone. To access it, simply double-tap WeWALK's touchpad. You can then swipe left or right on the touchpad to access different settings. To enter or select a setting, double tap the touchpad again. To go back or exit the voice menu, swipe the touchpad forward (swipe away from you and towards the ground).

How can I start navigation through the smart cane?

You can easily get navigation to previously saved locations via the voice menu. Double-tap on WeWALK's touchpad to open the voice menu then double-tap on 'Navigation'.

The following items are located under the navigation menu:

Start: Clicking on this will list the previously saved locations.

Clicking on one of the listed locations starts navigation to that location.

Where am I? Announces your current location.

Save location: Instantly saves the current location.

Software features are continually being updated and improved. Please check support.wewalk.io for more information on how to use the WeWALK smartphone app.

How do I clean and maintain my WeWALK?

Do not leave your smart cane in extremely low or high temperatures as this reduces the lifespan of its electronic components. Handle your smart cane with care and do not throw it around or shake it aggressively, otherwise internal circuit boards may be damaged.

Turn the device off before cleaning and use a damp and anti-static cloth.

Do not use chemical agents such as detergents.

Do not attempt to modify or disassemble your product. If the internal seal is damaged or wet, the manufacturer's quality assurance may not be warranted by the after-sales service provider even if your product is still under the warranty period.

What should I do if my white cane part is worn out or broken?

You can replace the damaged cane with any white cane that is compatible with our adaptors. More information can be found on our website (www.wewalk.io).

To replace the cane and attached adaptor:

1. Unscrew and remove the WeWALK device from the old cane.
2. Untie the knot in the elastic cord holding the adaptor to the old cane.
3. On the new cane, untie the knot in the elastic chord and remove the cane's existing rubber handle. Replace this with the adaptor by passing both ends of the elastic cord through the adaptor and tying a knot to secure it. You can cut the rest of the cord off if necessary but do leave some cord past the knot to allow for ease of untying in the future.
4. Attach WeWALK to the new cane with the adaptor.

SAFETY INFORMATION

GENERAL SAFETY

- The product must be charged with a 5V-1A adapter having IEC/EN 60950-1 approval.
- The instructions and warnings that the product bears on the labels attached to the product and packaging must be strictly followed.
- Do not expose the product to liquids such as water. If liquids are leaked into the product it may cause malfunction in the product or produce electric shock. In this case turn the device off immediately and consult the authorized service center for inspection and/or repair.
- Keep the product away from excessive heat sources.
- In order to prevent the risk of electric shock disconnect the product from the power source in extreme weather (storms, lightning, etc.).
- Do not drop the product or place any other objects on the product.
- To avoid danger, keep plastic bags out of the reach of infants and pets.

OPERATIONAL SAFETY

- This product must not replace good orientation and mobility skills. This product only notifies you about the obstacles between the head and waist level of your body. Please do not use the product except for its intended use.
- Before using WeWALK, the user should receive training on the limits/capabilities of the white cane.
- WeWALK must be used with a white cane with the proper alignment of the length according to the height of the user. The length of the cane should be at least the same as chest level or higher.
- Take care when unpacking as the folded sections of the white cane are held together under tension by an elastic bungee in a similar manner to a traditional white cane, and they will snap together when unfolded.
- In order to avoid malfunctions, use only recommended accessories.
- A round shaped and mesh covered ultrasonic sensor is posted at the front of the handle. Do not press on it or try to manipulate it in anyway. Any damage to the sensor may cause the product to perform poorly.
- Do not use the product in humid or rainy weather conditions which could deteriorate the performance of the ultrasonic sensor and might cause a malfunction.
- Some obstacles may not reflect ultrasonic waves and therefore may not be detected by WeWALK. The object must have a strong ultrasonic echo back to the sensor to be detected. Large targets such as a liquid surface in a tank are detected at the maximum range. Curved objects or sound absorbing materials such as fabrics reflect less energy directly back to the sensor. Granular materials may absorb sound energy from the sensor due to surface variation and/or angle of repose.
- Optimum operating temperatures are between 0 and 40 degrees Celsius.
- Ultrasonic functionality should be regularly tested to ensure correct functionality.
- Use this product at an altitude of less than 2000 meters above sea level.

BATTERY SAFETY

The device has an embedded, non-user-replaceable battery. If your device no longer works properly, refer to an authorized service provider for battery replacement or contact technical support. Do not leave the device charging for extended periods of time.

MAINTENANCE

Do not attempt to repair or modify the device yourself or attempt any servicing unless it is in any instructional document prepared by the technical division of the manufacturer. The repair and servicing must be carried out by technical personnel only. Otherwise, your warranty may become void and you may risk your health or your product.

When one or more of the below-listed circumstances occur, do not continue to operate the device, turn it off and refer to the nearest authorized service provider:

- If the product is dropped or its case is damaged.
- If the performance of the product has changed or needs to be repaired.
- If the product does not operate properly as described in the operating instructions.
- If a liquid was spilled on the product or when objects have fallen into the product.
- If the product has been exposed to rain or water.
- If an unexpected mechanical noise is coming from the product

FORESEEABLE MISUSE

Usage except 'intended use' can be unsafe. The following improper usage can inhibit the performance and safe operation of WeWALK:

- Untrained usage
- Using without a white cane
- Misalignment of the length of the white cane
- Charging with an adaptor of output greater than 5V 1A and/or no IEC/EN 60950-1 approval
- Using under heavy rain
- Using while running
- Holding WeWALK in the wrong position

POINTS TO BE CONSIDERED DURING TRANSPORT

Do not drop the device during transport and protect it against impact. Damages and faults that occur during transport after the delivery of the device to the customer are not included in the warranty coverage.

LIABILITY LIMITATION

Manufacturing company does not assume any responsibility for damages and injuries that may occur due to not observing the instructions in this user manual, using the device outside its intended use, unauthorized repairs, unauthorized modifications on the device and using spare parts not approved by the manufacturer.

INTENDED USE

The WeWALK Smart Cane helps visually impaired people walk more confidently for non-commercial use. This product includes a white cane and a control center that communicates with the companion smartphone application. It can direct the user via an array of sensor systems such as vibration motors and ultrasonic sensors.

This product is equipped with commercially available components. It is designed to provide comfort and ease of use which creates a preferable advantage compared to the legacy white cane design. In case there is a problem with the device, the user has the option to use the WeWALK Smart Cane as a legacy white cane. Thus, the design still has the regular legacy white cane functionality.

The device contains navigation functionality not only with its built-in compass but also with its special interactive navigation software for visually impaired people on mobile devices which wirelessly connect with the WeWALK Smart Cane. Compass calibration should be done prior to using the navigation functionality. The software structure is constructed in the manner of an open platform which promotes continuous software development. Therefore, it is designed as a wearable product which is an add-on of mobile phones for visually impaired people.

Wireless LAN Transmitter Specifications

Frequency Ranges	Max Output Power
2.400 GHz - 2.4835 GHz	7.1 dBm

COUNTRY RESTRICTIONS

This device is intended for home and use in all EU countries (and other countries following the relevant EU directive) without any limitation except for the countries mentioned below.

The requirements for any country may change at any time. It's recommended that user checks with local authorities for the current status of their national regulations for both 2.4 GHz and 5 GHz wireless LAN's.

TROUBLESHOOTING

When you detect an abnormal condition on your device, you may try to resolve the issue as per the descriptions specified.

TROUBLE	POSSIBLE CAUSES	SOLUTION
Does not open	The battery may be exhausted	Charge the product.
	The button may not have been pressed long enough	Press long to the button i.e. more than 3 seconds.
Does not connect to the smart phone	May not be in pairing mode	The product stays in pairing mode for 120 seconds when first turned on. A connection is required within the specified time.
	The phone ID may not be visible	Select your phone's visibility from the setting menu.
Can not detect obstacle	Ultrasonic feature may be off	See the Ultrasonic Activation / Deactivation section in the Touch Panel title in the manual.
	It may not be in the right grip	Look at the title of Holding Your WeWALK in the manual.
	Some surface types may be unstable	See the FAQ in the manual.
It's not charging	The adapter may not have a plug installed	Make sure the plug is plugged into a power source.
	There may not be electricity at the plug	Make sure there is electricity at the plug.
The device does not respond to any commands	The device's software may be locked.	Switch off and on again with the On / Off button.

PRODUCT SPECIFICATIONS

HARDWARE SPECIFICATIONS

Flash Memory	16Mbit
Ultrasonic Sensor	16mm open enclosure, 40kHz, directivity 55°
Touchpad	Multi-touch custom module
Vibration Motors	Left and Right vibrating buttons
Battery	1000mAh Li-ion with on package protection circuit
Battery Charger	Battery Charger
Speaker	Class D power amplifier + 0.5W smartphone speaker
Microphone	MEMS digital microphone
Gyro, Compass	3Axis Gyro
	3Axis Accelerometer
	3 Axis Magnetic Compass
Connectivity	Wireless

ELECTRICAL VALUES

Power input	USB Micro-B plug 5VDC 0.5A (max.)
Power supply	Input 100-240VAC 50/60Hz 0.2A, output 5VDC 1A (max) USB Type A
Industrial protection	IP20 (no protection against ingress of water)

OTHER SPECIFICATIONS

Altitude	max. 2000m
Weight	280 gr (without power supply)
Dimensions (Width x Length x Height)	25 mm x 289 mm x 44 mm
Obstacle detection distance	80cm - 170cm
Resolution	5 cm

ENVIRONMENTAL CONDITION

For operation

Ambient temperature range	-10oC to +40oC
Relative humidity range	%30 to %75
Atmospheric pressure range	70 kPa to 106 kPa

For transport and storage

Ambient temperature range	-40oC to +70oC
Relative humidity range	%10 to %100
Atmospheric pressure range	50 kPa to 106 kPa