

## TROUBLESHOOTING

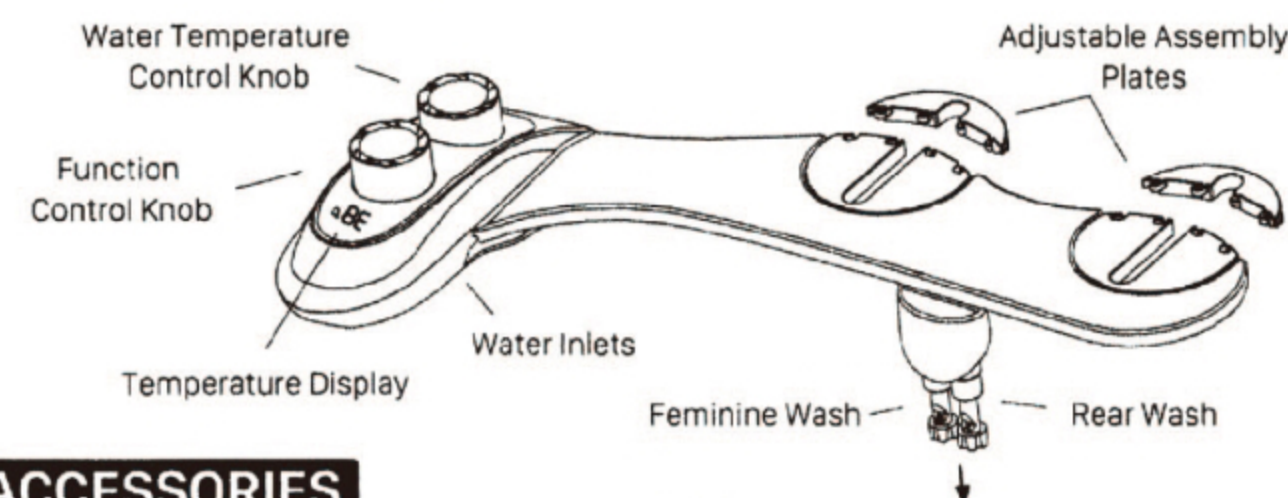
Problem	Possible Solutions
The water flow from the bidet is too strong.	Turn the water supply valve counter-clockwise to decrease the water flow. Or install a T-adapter with Shut-off Valve to reduce the water flow going into the bidet.
The nozzle gets stuck or does not extend/retract properly.	Gently pull the nozzle up and down a few times to loosen it, or you can also try cleaning it with paper towels soaked in vinegar to safely dissolve any hard water build up.
The nozzle is spraying off-center or to the side.	Adjust the positioning of the bidet on the toilet by a few degrees.
The nozzle sprays too far forward.	Reposition the bidet by pushing it back, towards the toilet tank.
The temperature doesn't display.	Install or exchange the battery.
The temperature display is fixed when adjusting the water temperature knob.	Make sure having hot water supply, rotate the 'Function Control Knob' to 'Water Preset'.

# USER MANUAL

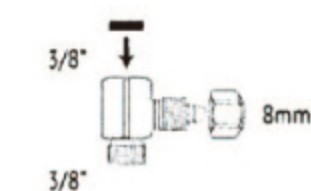
## Thermo Toilet Bidet

- ✓ Dual Nozzle Sprayer
- ✓ Hot and Cold Water Inlets
- ✓ Adjustable Water Temperature
- ✓ Eco-friendly Design
- ✓ Quick Installation Design
- ✓ Self-cleaning Nozzles
- ✓ Temperature Display
- ✓ Adjustable Water Pressure
- ✓ Elegant Design
- ✓ High Quality Material

## PRODUCT INTRODUCTION



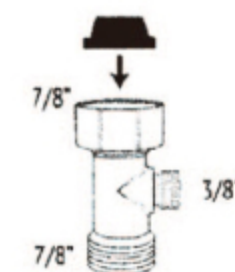
## ACCESSORIES



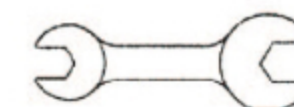
Hot Water T-adapter  
(3/8" x 3/8" x 8mm)



Water Inlet Cap  
(3/8")



Cold Water T-adapter  
(7/8" x 7/8" x 3/8")



Wrench



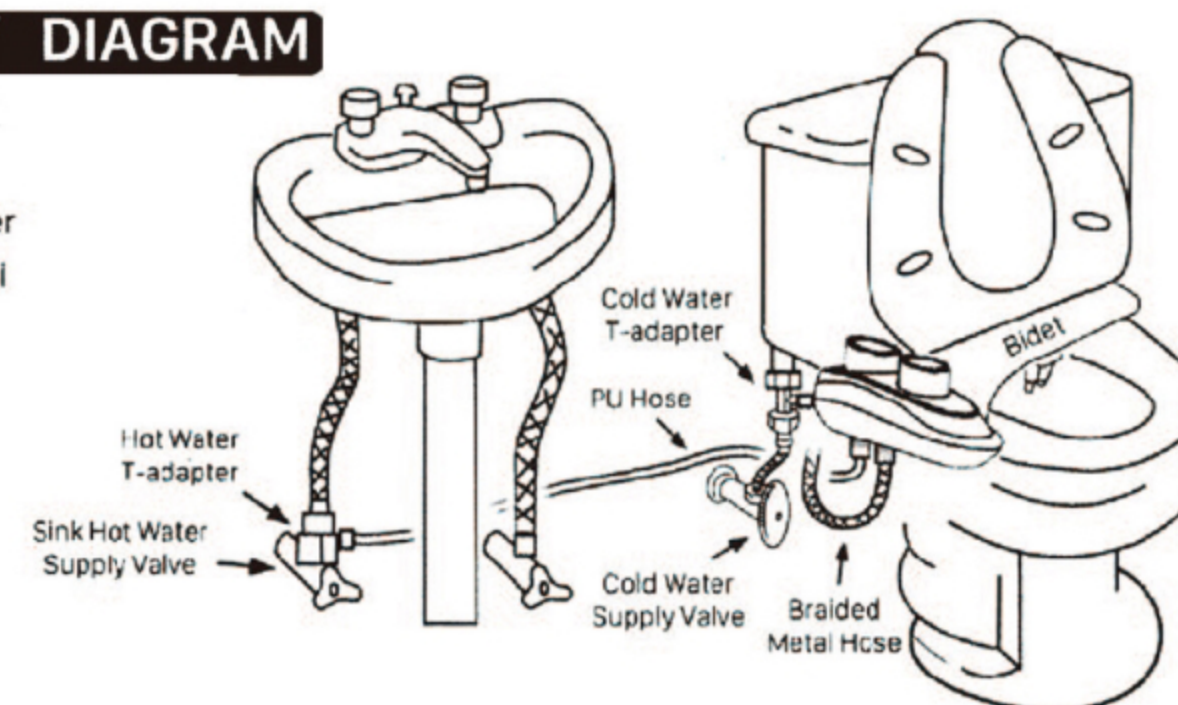
25.6' Cold Water Braided Metal Hose  
(3/8" x 3/8")



7.8' Hot Water PU Hose  
(3/8" x 8mm)

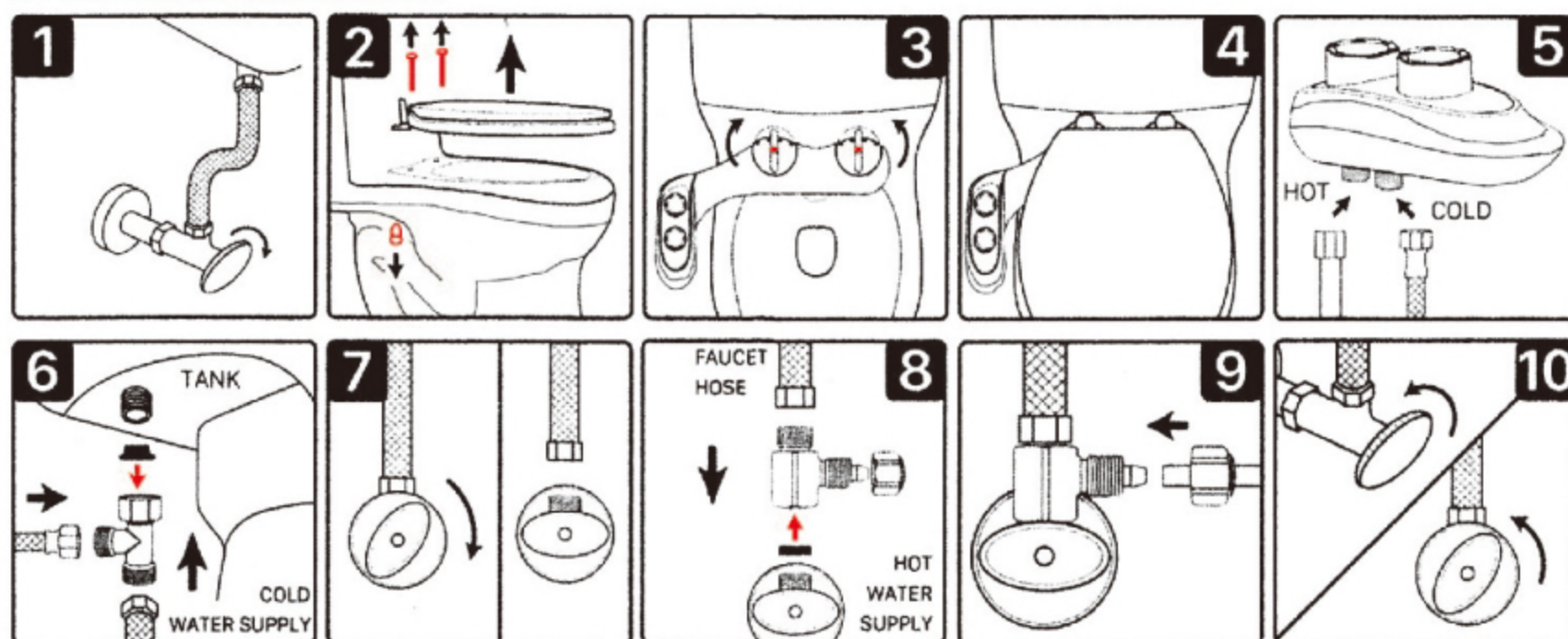
## ASSEMBLY DIAGRAM

**NOTE:** Working Water  
Pressure: 50 ± 20 psi





## INSTALLATION



### Step 1 - Turn Off Water Supply and Empty the Toilet Tank

Turn off the toilet tank water supply. Flush toilet and hold down the handle to completely empty the toilet tank.

### Step 2 - Remove the Toilet Seat

Lift the hinge tabs and use a flathead screwdriver to unscrew the toilet seat bolts while holding the nuts on the underside of the bolts in place.

### Step 3 - Mount Your Bidet on the Toilet

Place the bidet attachment on the toilet. Rotate the adjustment plates accordingly to line up properly with the holes on the toilet bowl.

### Step 4 - Reattach Your Toilet Seat

Reattach the toilet seat on top of the bidet attachment and secure it using the original toilet seat hardware.

### Step 5 - Connect the Hot and Cold Water Hose to the Bidet Water Inlets

Connect the cold water braided metal hose to the cold water bidet inlet. Connect the 3/8" end of the hot water PU hose to the hot water bidet inlet.

**NOTE:** If you do not need hot water temporarily, please seal the hot water inlet with the Water Inlet Cap.

### Step 6 - Install the Cold Water T-adapter to the Toilet Tank and Connect the Braided Metal Hose

Disconnect the water supply hose from the toilet tank.

Insert the black cone washer at the top of the cold water T-adapter. Connect the top of the cold water T-adapter to the toilet tank and the bottom of the T-adapter to the toilet tank water supply hose. Connect the braided metal bidet hose to the cold water T-adapter.

### Step 7 - Turn off the Sink Hot Water Supply

Turn off the sink hot water supply (located underneath or near the sink) to stop the flow of water.

### Step 8 - Install the Hot Water T-adapter to the Hot Water Sink Valve

Disconnect the sink hot water supply hose from the sink valve.

Insert the black rubber washer at the bottom of the hot water T-adapter. Connect the bottom of the hot water T-adapter to the hot water sink valve and the top of the T-adapter to the sink hot water supply hose.

### Step 9 - Connect the Hot Water PU Hose to the Hot Water T-adapter

Evaluate the right length of PU hose you need, and cut off the spare. Connect the 8mm end of the PU hose to the 8mm barb of the hot water T-adapter.

### Step 10 - Turn on the Toilet Tank Water Supply and Sink Hot Water Supply

Turn on the water supply, make sure there are no leaks. Now, you are ready to use the bidet for the first time.

## PREPARATION BEFORE INSTALLATION

### Install Batteries Before Install the Bidet Attachment

The bidet attachment requires 2 AA 1.5 volt batteries to activate the temperature display function. (Not included in the package) Rotate the 'Function Control Knob', make sure the temperature is displayed.

**NOTE:** This product does not have heating function, it just displays the temperature. It's safe. (36°C=97°F, 38°C=100°F, 40°C=104°F)

## FUNCTION OPERATION

### Warm Water Preset

Rotate the 'Function Control Knob' clockwise from 'OFF' to 'WATER PRESET', the mix water is flowing out while the water temperature displays. When the temperature display keeps stable and reaches your desired, it is ready for your rear wash or frontal feminine wash.

### Adjust Water Temperature

While the 'Function Control Knob' set to 'WATER PRESET', the mix water is flowing out, you can rotate slowly the 'Water Temperature Control Knob' to adjust the temperature displayed you desired.

When the water temperature reaches your desired temperature, it is ready for your rear wash or frontal feminine wash.

### NOTE:

1. You don't need to adjust it every time, it defaults at your last setting.
2. In order to get a better wash experience, please perform 'Warm Water Preset' before wash, that is, empty the cold water from the hose at first.
3. While adjust water temperature, the temperature display does not change, what is the problem?
  - a. The hot water is not connected or the valve doesn't turn on.
  - b. There is a problem with the hot water supply.

### Rear Wash

Rotate the 'Function Control Knob' clockwise from 'OFF' to 'WATER PRESET', then to 'Rear Wash' (90-180 degrees). Please rotate slowly, the water pressure can be controlled.

### Feminine Wash

Rotate the 'Function Control Knob' anticlockwise from 'OFF' to 'Feminine Wash'. Please rotate slowly, the water pressure can be controlled.

**NOTE:** If you need warm water, please perform 'Warm Water Preset' first.

