

Lomota

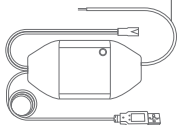
User Manual

Safety Information

- Keep the device away from water, fire, humidity or hot environments.
- Please plug in the socket in proper condition and away from children.
- Do not attempt to disassemble, repair, or modify the device.
- For indoor use only.
- This product should not be exposed to direct sunlight.
- When you leave the product unused for a long time unplug the product from the power outlet.
- Please contact seller for replacement if there is any damage caused by transportation.

Package Contents

1 x Signal Control Cable



1 x USB Adapter



4 x Screws

1 x Smart Garage Door Opener



1 x Door Sensor with Cable



1 x Test Wire

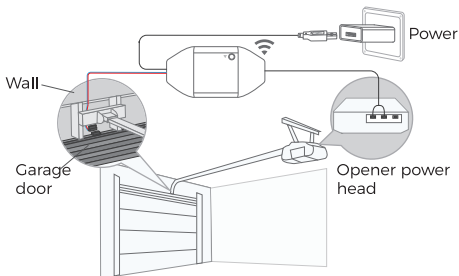


1 x Double-sided
Adhesive Tapes

* If you find any part is missing in the package, please contact support@lomota.net, we will provide proper solution for you.

Installation Guide

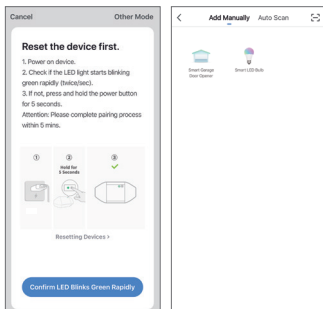
1. Lomota smart garage door opener is the companion device of your existing garage door opener. Its main working principle is as follows.



2. Download the eWiseHome app and choose Smart Garage Door Opener to get start.



3. Power on the device. Open eWiseHome app and simply follow the inbuild setup wizard for configuration.*



*Lomota smart garage door openers only support 2.4GHz networks.

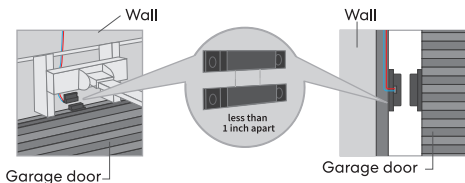
4. Connect the device to your home WiFi with eWiseHome app.

5. Connect the sensor cable. Move the sensor to check if it is functional*.



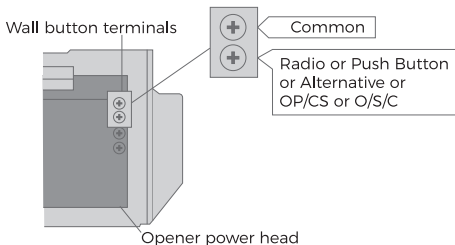
* Please contact support@lomota.net for help if the sensor is not functional.

- 6. Find a proper position on the garage door to mount the sensors*. Please make sure the distance between the two sensors is less than 1 inch when the garage door is closed, and the two sensors are well separated when the garage door is open.**



*You can use the included double-sided adhesive tapes or screws or sensor fixation.

- 7. Power off your existing garage door opener.**
Connect the other end of the signal control cable to the two terminals that connects to the wall button.
Wire order does not matter here.

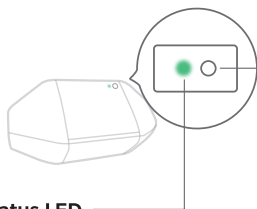


8. Deploy the device. We recommend to deploy it on the top of your existing garage door opener. Use the provided double-sided adhesive tapes for the fixation if necessary.



9. Power on both existing garage door opener and smart garage door opener. The smart garage door opener will reconnect to Lomota cloud service automatically. Congratulations! You have completed all installation steps.

LED and Button Rules



Reset

Hold for 5 seconds to enter Wi-Fi configuration mode or switch pairing mode.

Status LED

Flashing green rapidly(twice/sec): Smart mode for Wi-Fi connecting.

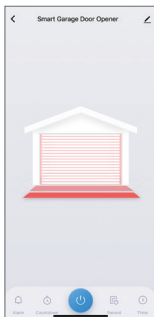
Flashing green slowly(once/3 sec): AP mode for Wi-Fi connecting.

Flashing green once: Open or close action is triggered by App or button, or the third-party control.

Off: Successfully connected/Powered OFF/No Wi-Fi connecting for 3 minutes.

How to Use

1. Operation Page



Power button:

Click to open or close the door.

Alarm:

Set notification, opening time and PIN code.

Countdown:

Set the countdown time to close the door.

Record:

Check operation history.

Timer:

Set the schedule to open or close the door automatically.

2. Voice Control



Amazon Alexa Voice Control :

1. Add smart device in the eWiseHome app.
2. Change device name in eWiseHome app so that Alexa can easily recognize, such as Garage door, Garage one, etc.
3. Launch the Alexa app and sign in your Alexa account and make sure you have at least one Alexa voice-controlled device installed like Echo, Echo dot, etc.
4. Tap on "Skill & Games" in the Alexa app menu.
5. Search for "eWiseHome". Tap "Enable" to enable the skill.
6. Enter the eWiseHome app account and password to link your eWiseHome account. Now you can enjoy the Alexa voice control now.

Common commands:

- "Alexa, open garage door."
- "Alexa, close garage door."
- "Alexa, is garage door closed?"

Google Assistant Voice Control :



1. Add smart device in the eWiseHome app.
2. Change device name in eWiseHome app so that Google Home can easily recognize, such as Garage door, Garage one, etc.
3. Launch the Google Home app and sign in your Google Home account and make sure you have Google Home device setup finished.
4. On the main page of the Google Home app, tap the sidebar menu in the top left corner and select "Home Control".
5. Tap the plus sign in the lower right corner and search for "eWiseHome".
6. Select the country where your eWiseHome app account is located, enter the eWiseHome app account and password to link your eWiseHome account. Now you can enjoy the Google Assistant voice control now.

Common commands:

- "Hey Google, open garage door."
- "Hey Google, close garage door."
- "Hey Google, is garage door closed?"

FAQ

At Lomota we strive to assure your satisfaction. Any questions about Smart Garage Door Opener please feel free to contact support@lomota.net.

1. Can I manage multiple smart garage door openers within eWiseHome app?

One smart garage door opener is for one garage door only, you can configure multiple smart garage door openers within the app.

2. What shall I do when my eWiseHome app is unable to control the added smart garage door opener?

Please check the followings:

- Check the main Wi-Fi's internet connection.
- Make sure that main Wi-Fi's password hasn't been changed.
- Factory reset the device and try to configure its Wi-Fi part again.

Warranty

Lomota products are covered by a 12 months limited warranty from the date of its original purchase. If any problems occur, please contact support@lomota.net for help.

We can only provide aftersales service for products that are sold by Lomota or Lomota authorized retailers and distributors.

FCC Compliance Information Statement

Changes or modifications not expressly approved by the party responsible for compliance could void the user's authority to operate the equipment.

This device complies with Part 15 of the FCC Rules.

Operation is subject to the following two conditions:

- (1) this device may not cause harmful interference, and
- (2) this device must accept any interference received, including interference that may cause undesired operation.

Note:

This equipment has been tested and found to comply with the limits for a Class B digital device, pursuant to Part 15 of the FCC Rules. These limits are designed to provide reasonable protection against harmful interference in a residential installation. This equipment generates, uses, and can radiate radio frequency energy, and if not installed and used in accordance with the instructions, may cause harmful interference to radio communications. However, there is no guarantee that interference will not occur in a particular installation. If this equipment does cause harmful interference to radio or television reception, which can be determined by turning the equipment off and on, the user is encouraged to try to correct the interference by one or more of the following measures:

- Reorient or relocate the receiving antenna.
- Increase the separation between the equipment and receiver.
- Connect the equipment into an outlet on a circuit different from that to which the receiver is connected.
- Consult the dealer or an experienced radio/TV technician for help.

This equipment complies with FCC radiation exposure limits set forth for an uncontrolled environment. This equipment should be installed and operated with a minimum distance of 20cm between the radiator & your body. This transmitter must not be co-located or operating in conjunction with

Canadian Compliance Statement —

This device contains licence-exempt transmitter(s)/receiver(s) that comply with Innovation, Science and Economic Development Canada's licence-exempt RSS(s). Operation is subject to the following two conditions:

- (1) This device may not cause interference.
- (2) This device must accept any interference, including interference that may cause undesired operation of the device.

L'émetteur/récepteur exempt de licence contenu dans le présent appareil est conforme aux CNR d'Innovation, Sciences et Développement économique Canada applicables aux appareils radio exempts de licence. L'exploitation est autorisée aux deux conditions suivantes :

- 1) L'appareil ne doit pas produire de brouillage;
- 2) L'appareil doit accepter tout brouillage radioélectrique subi, même si le brouillage est susceptible d'en compromettre le fonctionnement.

The device meets the exemption from the routine evaluation limits in section 2.5 of RSS 102 and compliance with RSS-102 RF exposure, users can obtain Canadian information on RF exposure and compliance.

Le dispositif rencontre l'exemption des limites courantes d'évaluation dans la section 2.5 de RSS 102 et la conformité à l'exposition de RSS-102 rf, utilisateurs peut obtenir l'information canadienne sur l'exposition et la conformité de rf.

This transmitter must not be co-located or operating in conjunction with any other antenna or transmitter. This equipment should be installed and operated with a minimum distance of 20 centimeters between the

radiator and your body. Cet émetteur ne doit pas être Co-placé ou ne fonctionnant en même temps qu'aucune autre antenne ou émetteur. Cet équipement devrait être installé et actionné avec une distance minimum de 20 centimètres entre le radiateur et votre corps.

Disclaimer

- 1. The function of this smart device is tested under a typical circumstance described in our specifications. Meross does NOT guarantee that the smart device shall perform exactly the same as described under all circumstances.**
- 2. By using third-party services including but not limited to Amazon Alexa, Google Assistant, Apple Homekit and SmartThings, customers acknowledge that Meross shall not be held liable in any way for the data and private information collected by such parties. Meross's total liability is limited to what is expressly covered in its Privacy Policy.**
- 3. Damages arising from ignorance of the SAFETY INFORMATION shall not be covered by Meross aftersales service, nor does Meross take any legal responsibility therefrom.**

Customers acknowledge understanding of these articles clearly by reading this manual.

SIMPLE DEVICE SIMPLIFY YOUR LIFE

Email: support@lomota.net

Manufacturer: Chengdu Meross Technology Co., Ltd.
Address: No. 1312, Building E6-1, Tianfu Software Park,
Chengdu, China.
MADE IN CHINA INDOOR USE ONLY
CAN ICES-3(B)/NMB-3(B)

