



Quick Start Guide ion4i Access Point

ANYWHERE EVERYWHERE

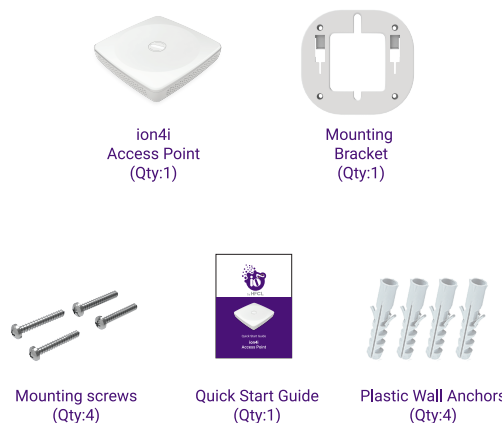


2

Introduction

Thank you for choosing ion4i Wireless Access Point with 2x2:2 Multi-User MIMO and 802.11ac Wave 2 compliance.

Packaging Content



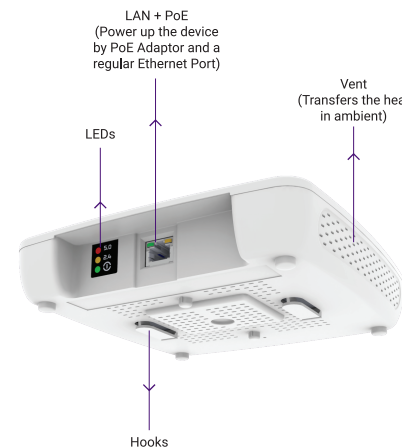
3

ion4i Specifications

Peak Throughput(aggregate)	Up to 1.27 Gbps (867 Mbps for 5 GHz and 400 Mbps for 2.4 GHz)
Wi-Fi Standard Support	802.11a/b/g/n/ac/ac Wave 2
Interface	1 X 10/100/1000 BASE-T Ethernet
Radio Mode	2x2 MU-MIMO with 2 spatial streams
Mesh Support	Self-creating, Self-healing Mesh
Maximum number of SSID (per radio)	16
Maximum User Support	128 on 5 GHz and 64 on 2.4 GHz
Power Supply	IEEE 802.3af PoE
Power Consumption (Max)	12 W (approx.)
Max Transmit Power	23 dBm for 2.4 GHz , 27 dBm for 5 GHz (will depend on country specific guidelines)
Antenna Type	Integrated Omnidirectional Antennas
Antenna Gain	4.5 dBi for 5 GHz, 4 dBi for 2.4 GHz
Management	Standalone (via GUI) or through on-premise based solution or cloud-based
Enclosure Dimensions	175 x 175 x 37 mm or 6.89 x 6.89 x 1.46 inches
Weight	0.35 kg
Operating Temperature	0°C to 50°C
Certifications	FCC Class B, CE, Passpoint 2.0, RoHS 3.0

4

Product Overview



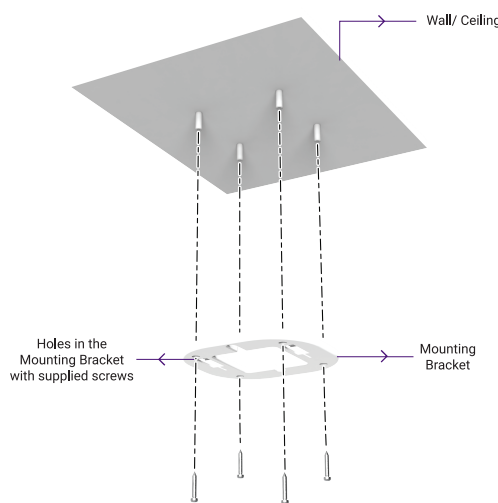
5

Mounting of ion4i Access Point

1. Place the Mounting Bracket which came with the package on a wall or ceiling and mark holes with a marker where you will insert the screws. Drill holes in the marked points and insert the plastic wall anchors.

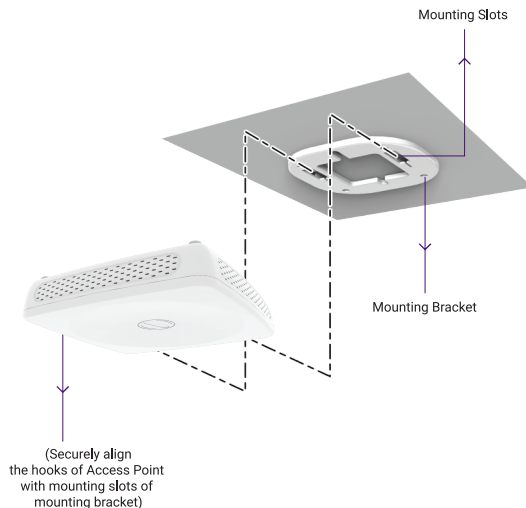
2. Use supplied screws and attach mounting bracket on the wall.

Note: Make sure that mounting bracket is tightly installed before mounting the Access Point on the wall or ceiling.



6

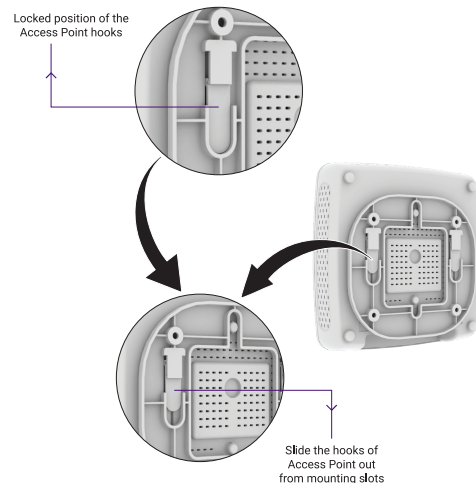
3. Align the hooks of Access Point with the mounting slots of the mounting bracket, ensure that it is properly hinged.



7

Unmounting of ion4i Access Point

1. Slide the hooks of Access Point out from the mounting slots of mounting bracket.



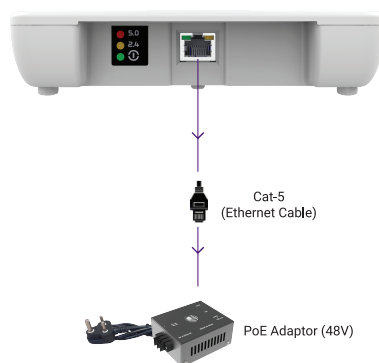
WARNING: HFCL is not held liable for any damages incurred during the process.

8

Getting the ion4i Online

Step 1: Power up

The Access Point can be powered up using PoE adaptor (48V) as shown below:



Note: Plug and Adaptor will vary by country/ region

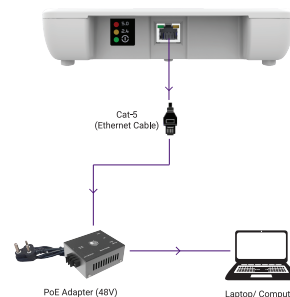
9

Step 2: Connect to the network

Section 1: Standalone AP

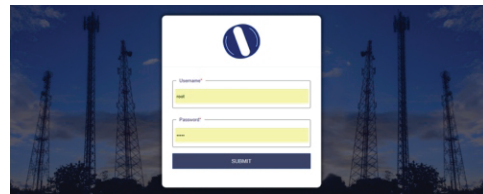
Follow the steps mentioned below and connect the Access Point to a network :

1. Connect an ethernet cable to the computer.
2. Connect the other end of the ethernet cable to the LAN port on the ion4i Access Point or use a PoE adaptor (48V) to do so.



3. Open the web browser and enter the Access Point static IP address in the address bar: 192.168.1.1
4. A login screen will appear.
5. Enter the default login credential details: User- root, Password- hfcl!@ion

10



Section 2: Controller Managed AP

Follow the steps mentioned to connect Access Point to a network :

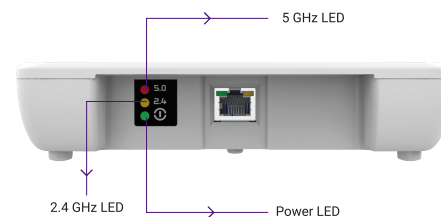
1. Connect an Ethernet cable to the computer.
2. Power-up the AP through PoE adaptor or PoE switch
3. Connect the AP to DHCP network and Internet
4. Login to HFCL IO cloud controller (cNMS) iocloud.hfcl.com with credentials provided.
- 4a. To get cNMS login credential, please send request email to iosupport@hfcl.com with below details

Customer Name	Customer email address	Customer address	Customer contact number	Distributor/ Retailer Name	No. of AP Purchased	Country

5. Add AP group under configuration
6. Add APs in the AP group
7. Create SSID in the AP group
8. Refer our website io.hfcl.com for detailed information to configure AP through cNMS

11

Step 3: Check the LED status



LED Color	Status
Power LED Green	Green color notifies the user that the device is powered ON
2.4 GHz Status LED	Solid yellow color notifies the user that the 2.4 GHz radio is active and blinks while data is being transmitted on 2.4 GHz radio
5 GHz Status LED	Solid red color notifies the user that the 5 GHz radio is active and blinks while data is being transmitted on 5 GHz radio

12

Safety Precautions

Observe the following safety precautions to avoid damage to the ion4i Access Point:

! Do not subject the device to high temperatures

! Keep away from high voltage cables

! Disconnect the device before cleaning it

! Do not wipe the device with a damp cloth

! Do not open the enclosure of the Access Point

! Fasten the device tightly with the mount

13

Part Number: QSG-01-0016
Revision: A



Contact Us:
Email: iosupport@hfcl.com
Website: www.hfcl.com
www.io.hfcl.com
8, Commercial Complex, Masjid Moth,
Greater Kailash-II, New Delhi- 110048

HFCL Limited All Rights Reserved. IO Networks and the IO logo are registered trademarks of HFCL Limited. Specifications are subject to change without notice.