

8-Sheet Strip-Cut Compact Shredder, No Basket
Déchiqueteuse à Coupe en Bandes, Compacte, 8 Feuilles, Sans Bac
Destructora Compacta de Corte en Tiras, 8 Hojas, Sin Cesto
B0C2CJV745

EN Page	2
FR Page	18
ES Página	33

Table of Contents

1. Important Safety Instructions	3
2. Symbols Explanation	4
3. Intended Use	5
4. Before First Use	5
5. Product Description	6
6. Assembly	7
7. Operation	8
7.1 Do not shred	8
7.2 Switching on/off	8
7.3 Control slider	9
7.4 Shredding	10
7.5 Status indicators	12
8. Emptying the Bin (not provided)	12
9. Cleaning and Maintenance	13
9.1 Cleaning	13
9.2 Storage	13
9.3 Maintenance	13
10. FCC – Supplier's Declaration of Conformity	14
10.1 FCC Compliance Statement	14
10.2 FCC Interference Statement	14
11. Canada IC Notice	14
12. Frequently Asked Questions	15
13. Specifications	16
14. Feedback and Help	17

1. Important Safety Instructions



Read these instructions carefully and retain them for future use. If this product is passed to a third party, then these instructions must be included.

When using electrical products, basic safety precautions should always be followed to reduce the risk of fire, electric shock, and/or injury to persons including the following:

⚠ DANGER Risk of electric shock!

Do not attempt to repair the product yourself. In case of malfunction, repairs are to be conducted by qualified personnel only.

⚠ CAUTION Risk of fire!

Never use any petroleum-based or flammable oils or lubricants in or around the machine as some oils can combust, causing serious injuries.

⚠ CAUTION Risk of injury!

- ▶ Do not hold CD/DVD with finger through the center ring while feeding into the shredder. Serious injury may occur.
- ▶ The product has very sharp blades that are encased on the underside. Do not open the product as not to expose the blades.
- ▶ Always switch the product off and unplug the power supply cord from the socket-outlet when not in use, before cleaning, moving or emptying the paper bin.
- ▶ Never dispose of flammable chemicals or materials that have come into contact with flammable chemicals (for example, nail polish, acetone and gasoline) in the paper bin.
- ▶ The ventilation should not be impeded by covering the ventilation openings with items, such as newspapers, table-cloths, curtains, etc.
- ▶ The minimum distances of 5 cm around the product is required for sufficient ventilation.
- ▶ Never shred large paper clips, metal credit cards, window or insulated envelopes, continuous forms, continuous computer paper, newsprint, bound pages (for example: notepads, checkbooks, magazines, etc.), transparencies, laminated documents, cardboard, any items with adhesives, hard materials or plastic (except plastic credit cards and CDs).
- ▶ The socket-outlet shall be installed near the product and shall be easily accessible.
- ▶ Empty the bin regularly. An overfilled bin might lead to jams.
- ▶ The product shall not be exposed to dripping or splashing and no objects filled with liquids, such as vases, shall be placed on the product.
- ▶ Regularly check the power plug and power supply cord for damage. If the power supply cord is damaged, it must be replaced by a qualified person in order to avoid a hazard.
- ▶ Never try to clean or clear the shredder cutters.
- ▶ Never shred beyond the specified sheet capacity. This may result in product damage.
- ▶ This product should be used in moderate climates only.

- This appliance has a polarized plug (one blade is wider than the other). To reduce the risk of electric shock, this plug will fit outlet only one way. If the plug does not fit fully in the outlet, reverse the plug. If it still does not fit, contact a qualified electrician. Do not modify the plug in any way.

SAVE THESE INSTRUCTIONS

2. Symbols Explanation



WARNING: Read and understand all instructions before using this product. Save these instructions for later use, and follow all warnings and instructions marked on the product.



Do not touch the cutters, be aware of the sharp edges.



This equipment is not intended for use by children. Avoid touching the media feed opening with hands, clothing or hair. Unplug this equipment when not in use for an extended period of time. Hazardous moving part is in this equipment, keep body parts away from moving parts.



Read the instructions before use.



Avoid touching the document/media feed opening with the hands.



Avoid clothing touching the document/media feed opening.



Product is not intended for use by children (product is not a toy).



Avoid hair touching the document/media feed opening.



Keep aerosol products away.



CD/DVD destroyer location



Maximum number of sheet capacity.



Plastic card position guide for shredding.



This appliance is classified as protection class II. This means the appliance is equipped with reinforced or double insulation between the mains supply circuit and the output voltage or the casing. Therefore it does not require a safety connection to an electrical earth (ground).



Alternating current (AC).

3. Intended Use

- ▶ This product is intended for shredding paper, CDs, DVDs, plastic credit cards and similar materials only. Do not shred greeting cards with sound chips or batteries.
- ▶ This product is intended for office and private use.
- ▶ This product is intended to be used in dry indoor areas only.

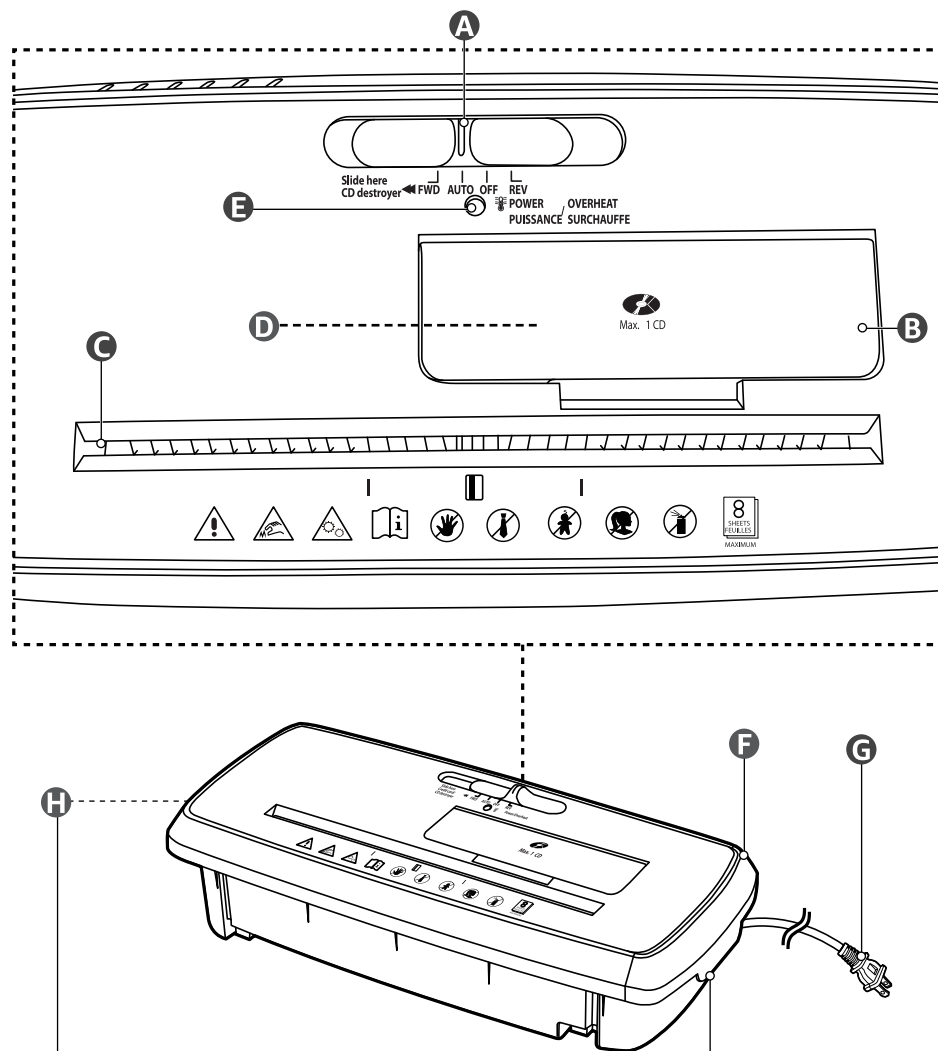
4. Before First Use

⚠ DANGER Risk of suffocation!

Keep any packaging materials away from children and pets – these materials are a potential source of danger, e.g. suffocation.

- ▶ Remove all the packing materials.
- ▶ Remove and review all components before assembly.
- ▶ Check the product for transport damages.
- ▶ Before connecting the product to the power supply, check that the power supply voltage and current rating corresponds with the power supply details shown on the product rating label.

5. Product Description



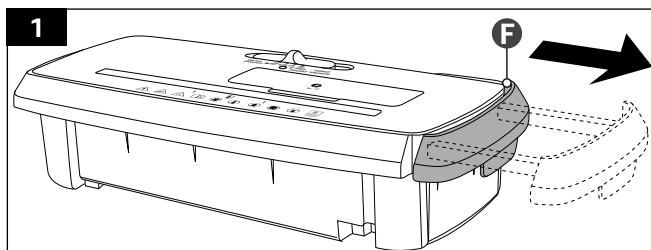
- | | |
|----------------------------------|--|
| A Control slider | E Power/Overheat indicator |
| B CD destroyer slot cover | F Pullout handle |
| C Paper/card feed slot | G Power cord with plug |
| D CD destroyer slot | H Bin anchor (on both sides) |

6. Assembly

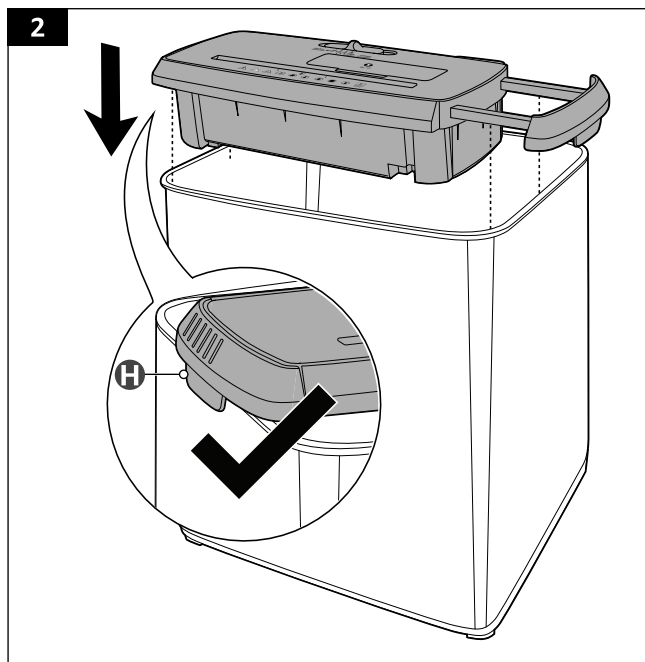
NOTICE

- ▶ Keep a minimum distance of 5 cm between the product and any walls for sufficient ventilation.
- ▶ The product can be placed on different bins of other sizes (not provided) as long as the pullout handle (F) can fit over the edges of the selected bin.
- ▶ Remove any plastic bags from the selected bin. This may cause the product not to operate properly.

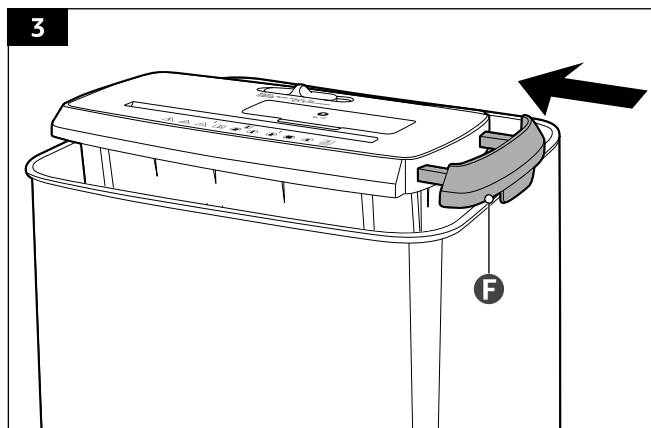
1. Adjust the pullout handle (F) in the product to fit the selected bin (Fig. 1).



2. Use the bin anchor (H) to position and secure the product on the selected bin (Fig. 2).



3. Push the pullout handle (F) back to secure the product to the rim of the selected bin (Fig. 3).



7. Operation

7.1 Do not shred



Paper clips



Insulated envelopes



Adhesive materials



Newspapers



Continuous
computer paper



Metal credit cards




Cardboard





Laminated
documents

NOTICE

- ▶ Always unplug the product when not in use.
- ▶ The  indicator (E) steadily lits once the product is switched on.

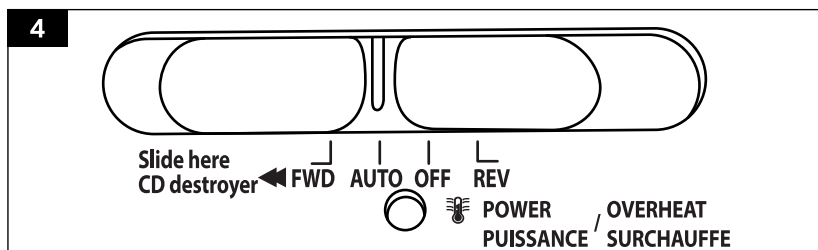
7.2 Switching on/off

1. Connect the power plug (G) to a suitable socket-outlet.
2. Switch the product on by sliding the control slider (A) to **AUTO** mode position. The  indicator (E) steadily lits.
3. Switch the product off by sliding the control slider (A) to **OFF** mode position. The  indicator (E) goes off.

7.3 Control slider

NOTICE


- Shredding CDs can only be performed in **FWD** mode as there is no sensor in the CD destroyer slot (D).
- The sensors for **AUTO** mode is installed only at the paper/card feed slot (C). Inserting a CD into the CD destroyer slot (D) in **AUTO** mode will not trigger the motor to run.



Set the control slider (A) to the mode desired.


FWD

Forward: The **FWD** mode allows to manually start the shredding mode. While in **FWD** mode the product continues to shred even without any paper or items placed in it.

The  indicator (E) steadily lits.

AUTO

Auto: While in **AUTO** mode, the motor does not start running until paper is inserted into the feed slot (C). Always feed the paper in as straight as possible. When the paper or card has passed through, the motor stops after 2-5 seconds.

The  indicator (E) steadily lits.


OFF

Off: While in **OFF** mode, the product is connected to power, but is not switched on for shredding. To switch the product on, slide the control slider (A) to the mode desired.

The  indicator (E) goes off.

REV

Reverse: In an unlikely event of a paper jam, the reverse setting can be used to help clear the cutters of material that did not pass through. Before clearing a jam by using the REV mode, empty the selected bin.

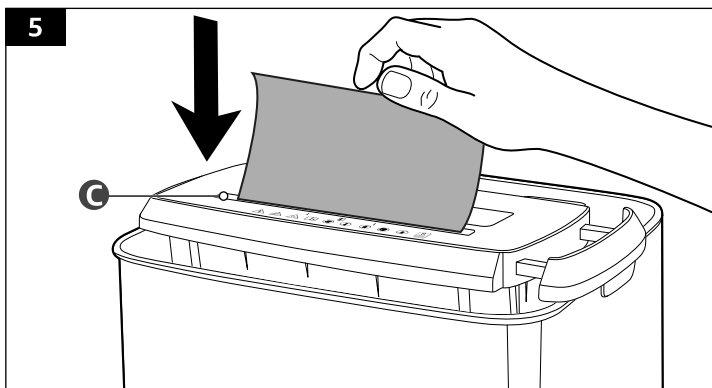
The  indicator (E) steadily lits.

7.4 Shredding

NOTICE

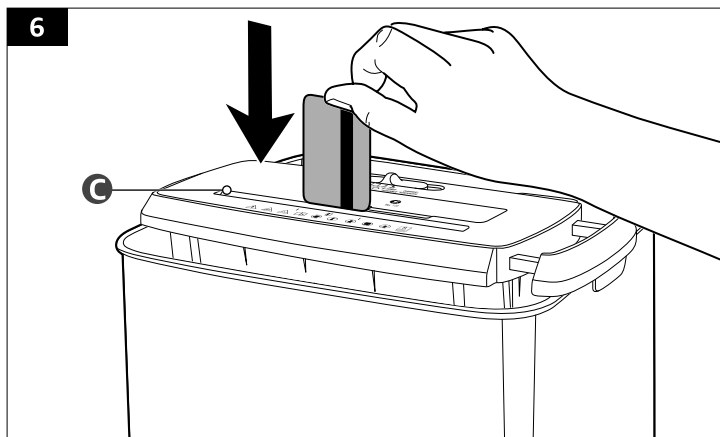
A sensor is located in the center of the paper/card feed slot (C). In **AUTO** mode, always insert the item into the center of the feed slot (C).

7.4.1 Paper



- Do not exceed the sheet count per pass (8 sheets max.). The paper weight, humidity levels and voltage rating may impact paper shredder's capacity. It is recommended to not exceed 85% of the maximum sheets per pass.
- One folded sheet of paper equates to 2 sheets of paper. Heavier paper, humidity or a supply voltage lower than the rated voltage may reduce shredding capacity.

7.4.2 Credit card



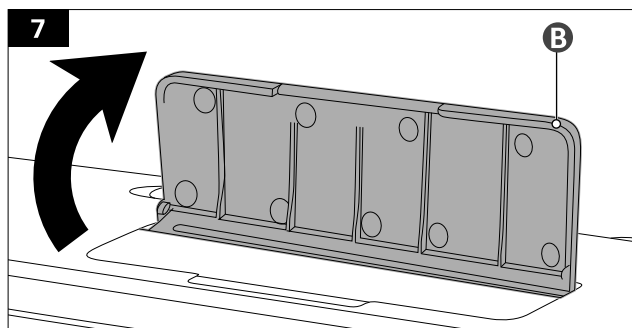
- Only shred credit cards by feeding them vertically into the center of the paper/card feed slot (C). Release the card when shredding begins.
- The sensor is located in the center of the paper/card feed slot (C). Do not insert credit cards at the sides of the paper/card feed slot (C).
- Only feed in one credit card at a time.

7.4.3 CD/DVD

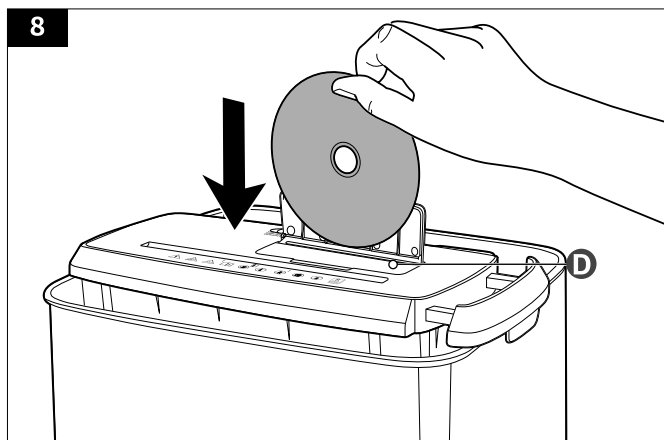
⚠ DANGER Risk of injury!

Do not hold a CD/DVD with finger through the center ring while feeding into the CD destroyer slot (D).

1. Set the control slider (A) to **FWD** mode.
2. Lift the CD destroyer cover (B) to begin shredding (Fig. 7).



3. Hold a CD/DVD by its edge and position it in the middle of the CD destroyer slot (D) (Fig. 8).



4. Release the CD/DVD when shredding begins.
5. Only feed in one CD/DVD at a time.

7.5 Status indicators

9



POWER / OVERHEAT
PUISSANCE / SURCHAUFFE



Power/Overheat

This indicator (E) goes off when the control slider (A) is set to **OFF**.

When set in other modes, the blue  indicator (E) steadily lits.

This indicator (E) lights up red when the product has shredded continuously beyond the maximum running time of 2 minutes and 30 seconds, and has overheated.

The product automatically shuts off. If this happens, switch the shredder off for 15 minutes or longer before resuming normal operation.

8. Emptying the Bin (not provided)

WARNING Risk of injury!

- ▶ It is recommended to switch to **OFF** mode when lifting the product. The blades on the shredder slots (C/D) may cause hair or clothes to accidentally go through the slots and cause injuries.
- ▶ The blades on the bottom of the product are enclosed however, exercise caution when removing papers that are stuck when emptying the bin.

NOTICE

- ▶ There is no sensor to indicate if the selected bin at full capacity. It is recommended to check if the bin is full from time to time.
- ▶ The product continues shredding process even when lifted from the bin. There is no sensor to stop the shredding process.

1. Set the control slider (A) to **OFF** mode.
2. Carefully lift the product from the selected bin (not provided).
3. Empty the bin and carefully remove paper on the bottom of the product.
4. Reassemble the product following assembly steps 1 to 3.

9. Cleaning and Maintenance

⚠ WARNING Risk of electric shock!

- ▶ To prevent electric shock, unplug the product before cleaning.
- ▶ During cleaning do not immerse the electrical parts of the product in water or other liquids. Never hold the product under running water.

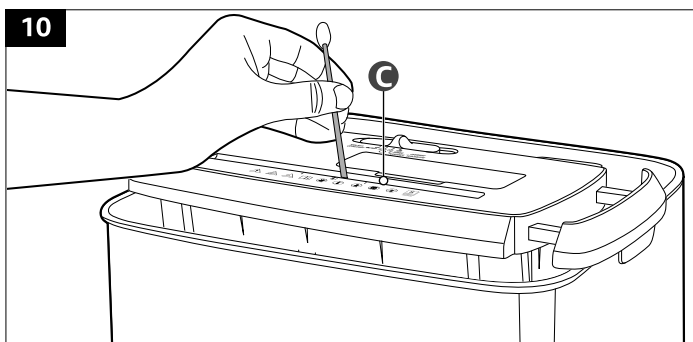
⚠ WARNING Risk of explosion!

Do not spray or keep any aerosol products in or around the product.

9.1 Cleaning

- ▶ To clean the product, wipe with a soft, slightly damp cloth.
- ▶ Wipe the product dry after cleaning.
- ▶ Never use corrosive detergents, wire brushes, abrasive scourers, metal or sharp utensils to clean the product.
- ▶ Do not try to clean or clear the shredder cutters on the feeding slots (C/D).

9.1.1 Cleaning the sensor



1. Unplug the product from the power supply.
2. Using a Q-tip, gently wipe away dust and buildup from the sensor (Fig. 10).

9.2 Storage

Store the product in its original packaging in a dry area. Keep away from children and pets.

9.3 Maintenance

- ▶ The product does not require to be oiled or lubricated.
- ▶ Any other servicing than mentioned in this manual should be performed by a professional repair center.

10. FCC – Supplier's Declaration of Conformity

Unique Identifier	B0C2CJV745-8-Sheet Strip-Cut Compact Shredder, No Basket
Responsible Party	Amazon.com Services LLC.
U.S. Contact Information	410 Terry Ave N. Seattle, WA 98109 USA
Telephone Number	(206) 266-1000

10.1 FCC Compliance Statement

1. This device complies with Part 15 of the FCC Rules. Operation is subject to the following two conditions:
 - (1) this device may not cause harmful interference, and
 - (2) this device must accept any interference received, including interference that may cause undesired operation.
2. Changes or modifications not expressly approved by the party responsible for compliance could void the user's authority to operate the equipment.

10.2 FCC Interference Statement

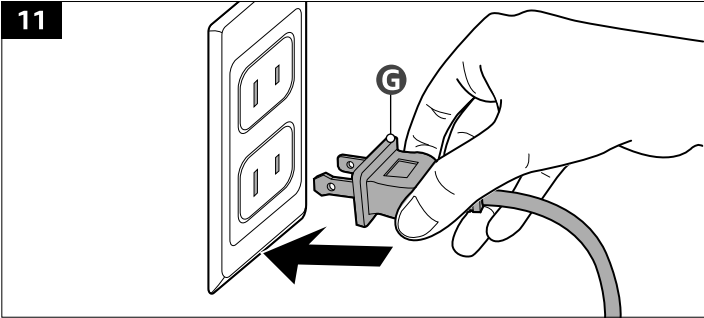
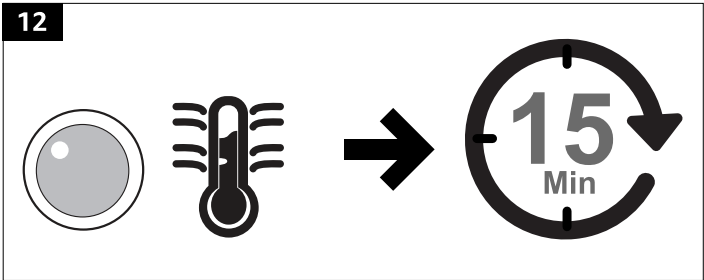
This equipment has been tested and found to comply with the limits for a Class B digital device, pursuant to part 15 of the FCC Rules. These limits are designed to provide reasonable protection against harmful interference in a residential installation. This equipment generates, uses and can radiate radio frequency energy and, if not installed and used in accordance with the instructions, may cause harmful interference to radio communications. However, there is no guarantee that interference will not occur in a particular installation. If this equipment does cause harmful interference to radio or television reception, which can be determined by turning the equipment off and on, the user is encouraged to try to correct the interference by one or more of the following measures:

- ▶ Reorient or relocate the receiving antenna.
- ▶ Increase the separation between the equipment and receiver.
- ▶ Connect the equipment into an outlet on a circuit different from that to which the receiver is connected.
- ▶ Consult the dealer or an experienced radio / TV technician for help.

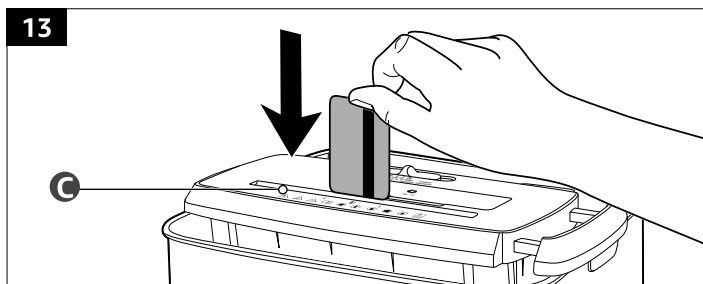
11. Canada IC Notice

This Class B digital apparatus complies with Canadian CAN ICES-003(B) / NMB-003(B) standard.

12. Frequently Asked Questions

Problem	Possible cause	Solution
The product does not switch on.	The socket outlet does not have power or the voltage is too low.	Check if the plug (G) is connected to the socket outlet. Use voltage tester to verify if the socket outlet is powered (Fig. 11).
<div>11</div> 		
The product is not switched on.	The product is not switched on.	Primarily, set the control slider (A) to AUTO mode.
The product shuts off.	Motor has overheated due to extended operation longer than 2 minutes and 30 seconds.	Stop using the product but do not switch it off. Wait for 15 minutes or longer to cool down before resuming normal operation (Fig. 12).
<div>12</div> 		
The motor is constantly operating while in AUTO mode.	The sensor(s) is/are dirty.	<ol style="list-style-type: none"> 1. Set the control slider (A) to OFF. 2. Empty the selected bin and set the control slider (A) to REV to eject the paper. 3. Set the control slider (A) to OFF, use cotton swab or needle nosed pliers to take out the paper scraps through the feed slot (C), never through the blades. Do not use any cleaner or water (Fig. 10).

Problem	Possible cause	Solution
The product does not feed or shred credit card or small pieces of paper.	The sensor is not activated.	<p>The sensor of the product is located near the center of the feed slot (C/D). Feed directly into the center area to activate the motor, especially for smaller pieces of paper or credit cards (Fig. 13).</p> <p>Take note and follow the guide icon on the panel for correct positioning.</p>



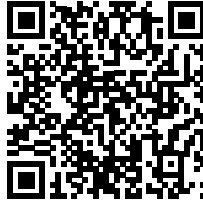
13. Specifications

Model number	S120-E
Rated voltage	120 V AC, 60 Hz
Rated current consumption	1.5 A
Noise emission	≤75 dB
Protection class	Class II
Sheet capacity	max. 8 sheets of 75 gsm paper
Shredded paper size	≤0.26" (0.65 cm) pieces
Shred type	Strip cut
Paper shredding slot width	8.7" (22 cm)
Credit card and CD/DVD capacity	1 at a time
Security level	P-2

14. Feedback and Help

We would love to hear your feedback. To ensure we are providing the best customer experience possible, please consider writing a customer review.

Scan QR Code below with your phone camera or QR reader:



If you need help with your Amazon Basics product, please use the website or number below.



amazon.com/gp/help/customer/contact-us



+1 877-485-0385

amazon basics

amazon.com/AmazonBasics

MADE IN VIETNAM
FABRIQUÉ AU VIETNAM
GEMAAKT IN VIETNAM

V03-08/23