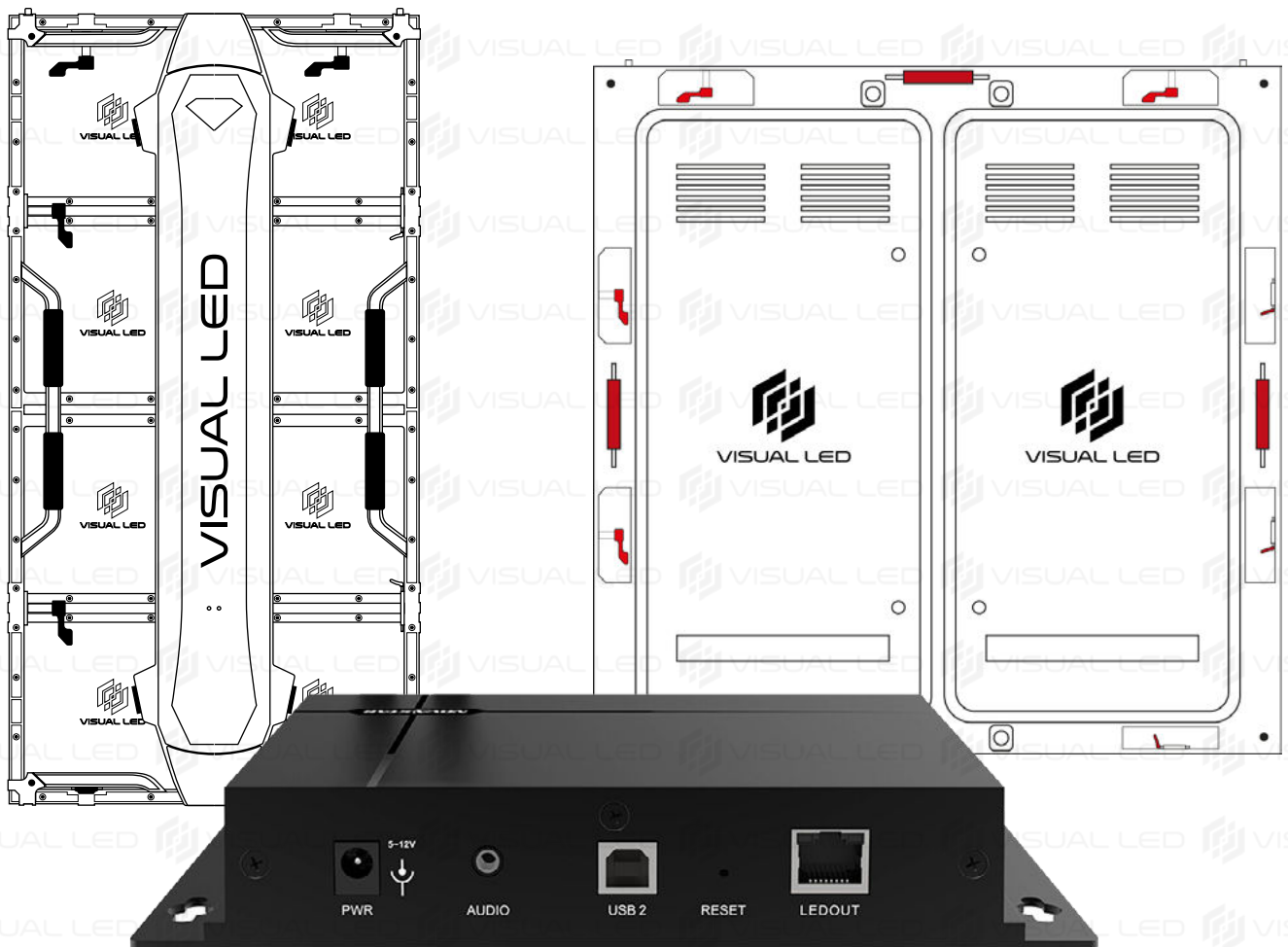




# WINDOWS PC SCREEN CONFIGURATION MANUAL WITH NOVA LCT



NovaLCT



ENGLISH

# INDEX - CONFIGURATION STEPS

READ THIS MANUAL AND FOLLOW THIS STEPS IN ORDER

1

## WIRING AND CONNECTIONS

- 1.A NETWORK CONNECTION WITH ETHERNET CABLES
- 1.B WI-FI ACCESS POINT CONNECTION

2

## SOFTWARE DOWNLOAD AND INSTALLATION

- 2.1 DOWNLOAD AND INSTALL NOVALCT

3

## LOGIN TO THE CONTENT PLAYER FROM NOVALCT

- 3.1 LOGIN TO THE CONTENT PLAYER
- 3.2 ACCESS TO SCREEN CONFIGURATION

4

## RECEIVING CARD CONFIGURATION

- 4.1 IDENTIFY THE POSITION OF YOUR LED CABINETS
- 4.2 LOADING THE CONFIGURATION FILE
- 4.3 SENDING THE NEW CONFIGURATION TO THE SCREEN

5

## SCREEN CONNECTION CONFIGURATION

- 5.1 EXAMPLE OF CONNECTION SETTINGS
- 5.2 SETTING THE NUMBER OF CABINETS FOR YOUR DISPLAY
- 5.3 CONFIGURE DATA WIRING CONNECTIONS
- 5.4 SENDING THE CONFIGURATION TO THE SCREEN
- 5.5 BACKUP FILE OF THE SCREEN CONNECTION

## STEP 1: WIRING AND CONNECTIONS



THERE ARE 2 WAYS TO CONNECT YOUR LED DISPLAY WITH THE CONTENT PLAYER AND YOUR PC. **CHOOSE ONE OF THE FOLLOWING CONNECTION METHODS (A OR B).**

VISUAL LED DISPLAY

### 1.A - NETWORK CONNECTION WITH ETHERNET CABLES (RECOMMENDED)



STANDARD NETWORK CABLE STRAIGHT FROM THE LED OUT PORT OF THE CONTROLLER TO THE FIRST LED DISPLAY FRAME

THERE MUST NOT BE ANY ROUTER OR SWITCH BETWEEN THE PLAYER AND THE SCREEN

CONTENT PLAYER

WINDOWS PC WITH WINDOWS 10 OR HIGHER

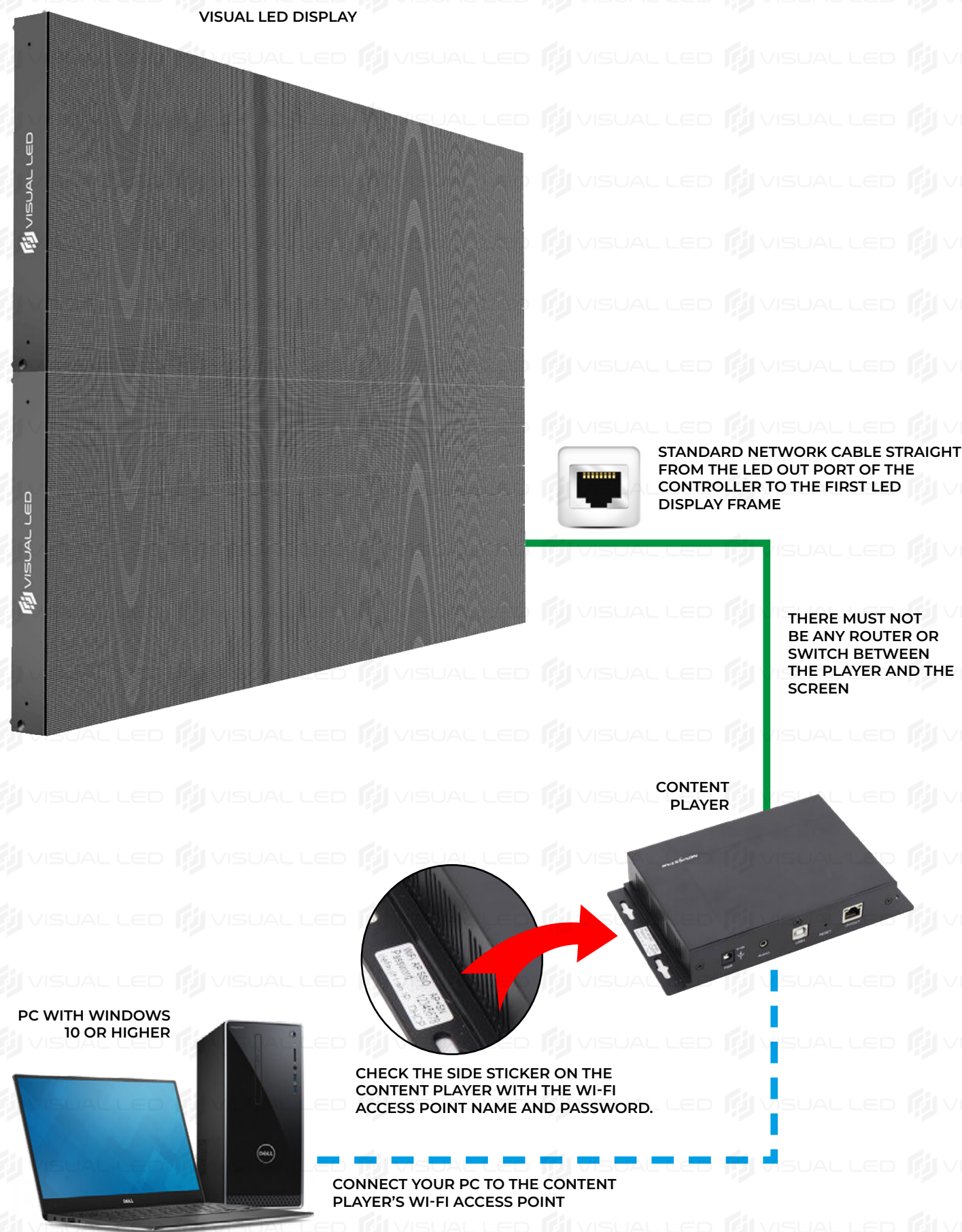


STANDARD NETWORK CABLE FROM YOUR PC TO YOUR ROUTER



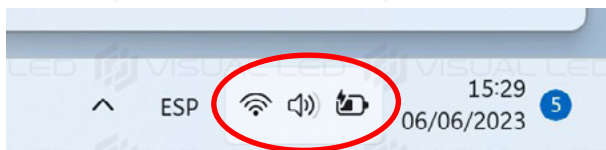
STANDARD NETWORK CABLE FROM YOUR ROUTER TO THE ETHERNET PORT OF THE CONTENT PLAYER

## 1.B - WI-FI ACCESS POINT CONNECTION

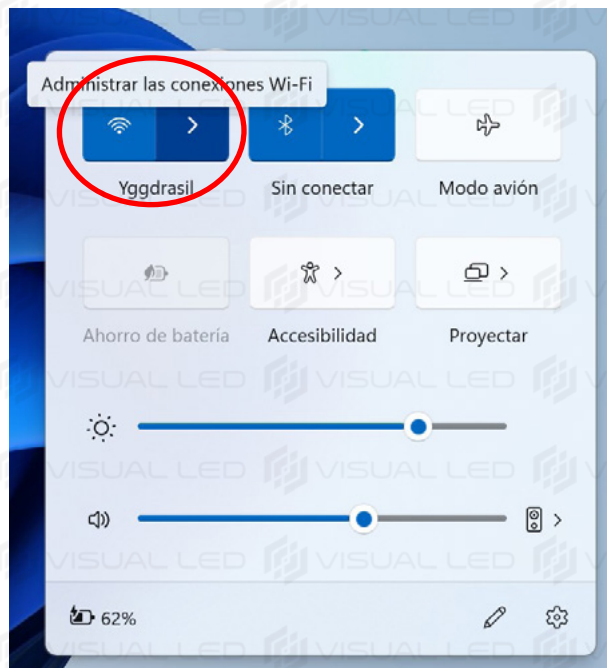




**1: CLICK ON THE WIRELESS NETWORKS ICON IN THE LOWER RIGHT CORNER OF YOUR PC'S DESKTOP.**



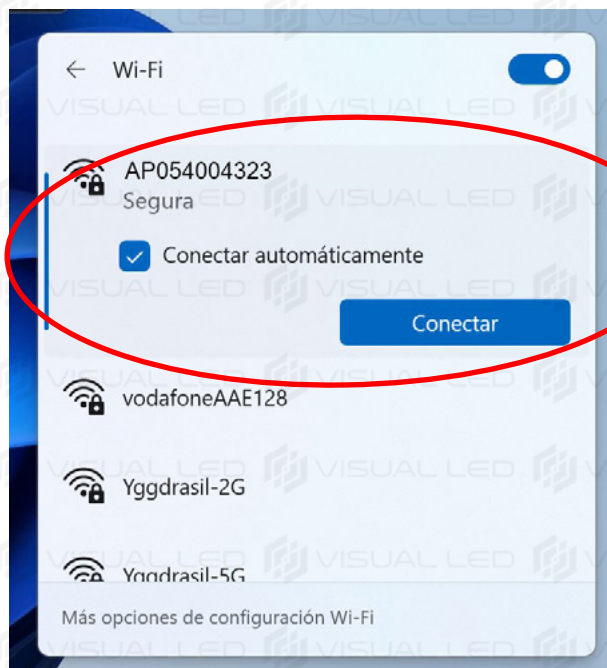
**2: SELECT THE BUTTON TO MANAGE WIFI CONNECTIONS**



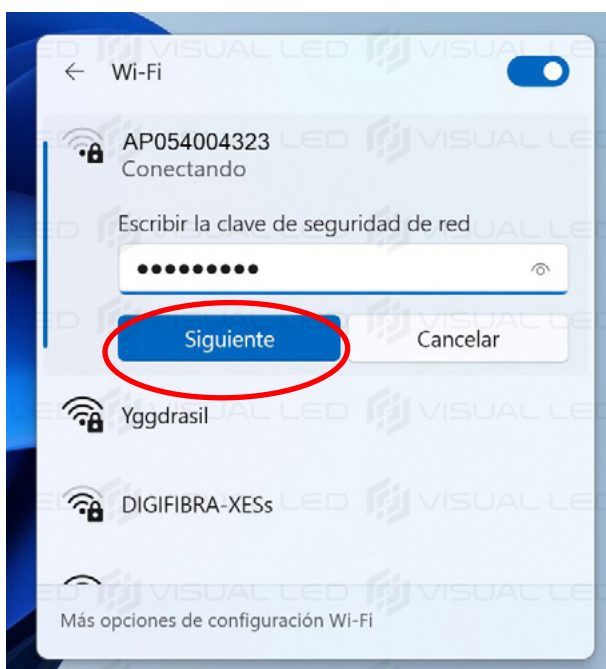
**3: A LIST OF WI-FI NETWORKS DETECTED BY YOUR PC WILL BE DISPLAYED.**



**4: CHECK FOR THE NETWORK CALLED APXXXXXXX (THE EXACT NAME IS ON THE STICKER ON THE SIDE OF THE CONTENT PLAYER) AND CLICK ON "CONNECT"**



**5: TYPE THE WI-FI PASSWORD (12345678 BY DEFAULT) AND CLICK "NEXT".**

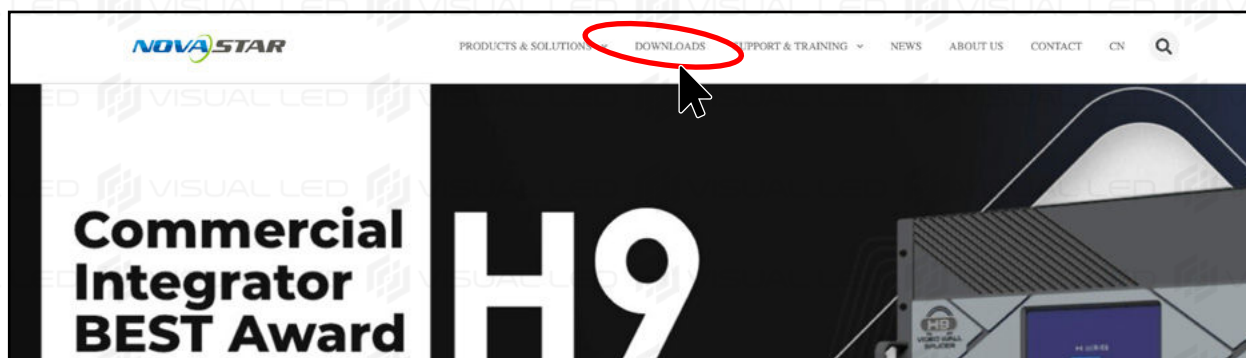


**6: NOW YOU ARE DIRECTLY CONNECTED TO THE CONTENT PLAYER OF YOUR LED DISPLAY**

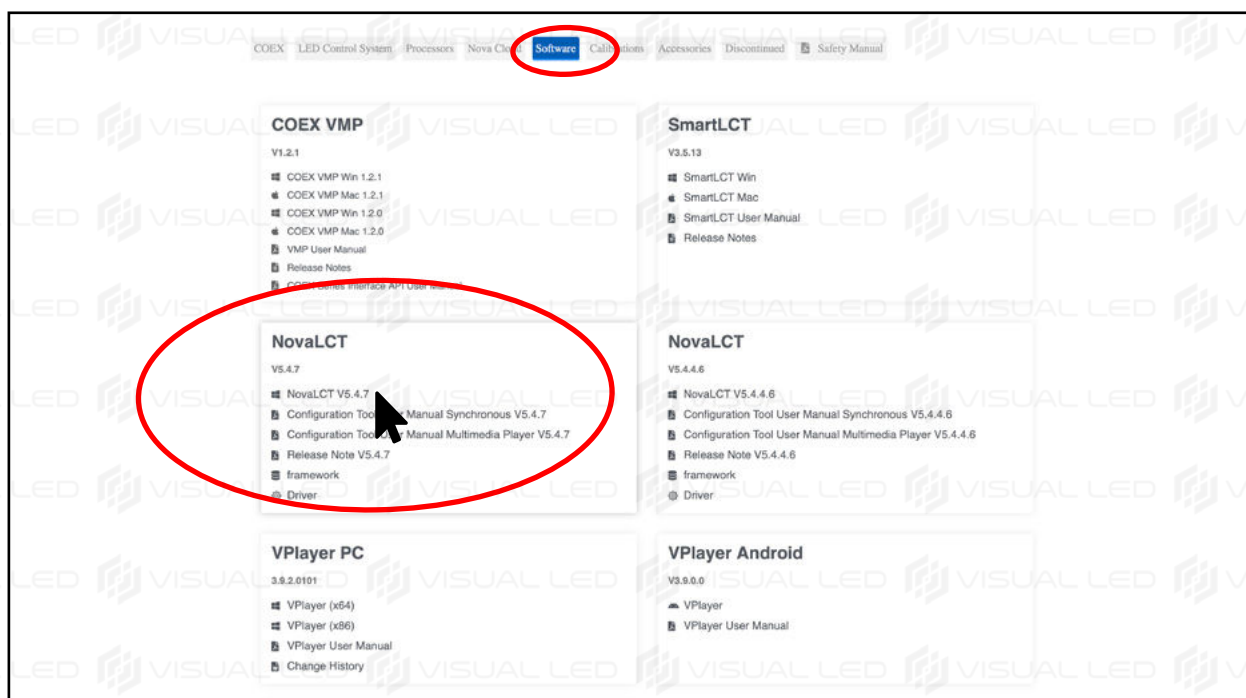
## STEP 2: SOFTWARE DOWNLOAD AND INSTALLATION

### 2.1 DOWNLOAD AND INSTALL NOVALCT

VISIT NOVASTAR'S WEBSITE ([HTTPS://WWW.NOVASTAR.TECH](https://www.novastar.tech)) AND GET TO THE DOWNLOADS SECTION



DOWNLOAD THE LATEST VERSION OF NOVALCT FROM THE "SOFTWARE" TAB IN THE DOWNLOAD SECTION.



INSTALL NOVALCT FOLLOWING ALL DEFAULT INSTRUCTIONS.

THE INSTALLATION OF NOVALCT MAY TRIGGER ADDITIONAL SOFTWARE AND DRIVERS INSTALLATIONS FOR A CORRECT DETECTION OF THE LED DISPLAY. ALLOW EVERY STEP.

## STEP 3: LOGIN TO THE CONTENT PLAYER FROM NOVALCT

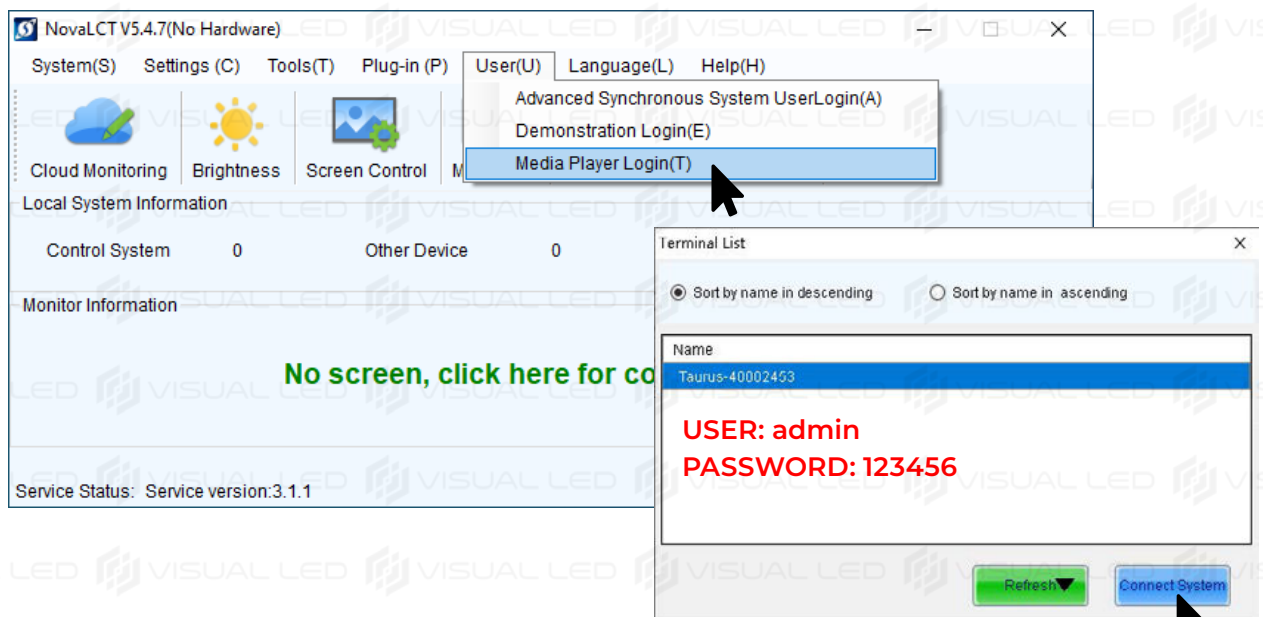
### 3.1 - LOGIN TO THE CONTENT PLAYER



**RUN NOVALCT AND ALLOW ANY NETWORK ACCESS PERMISSION.**



**CLICK ON THE "USER" MENU AND SELECT "MEDIA PLAYER LOGIN".**



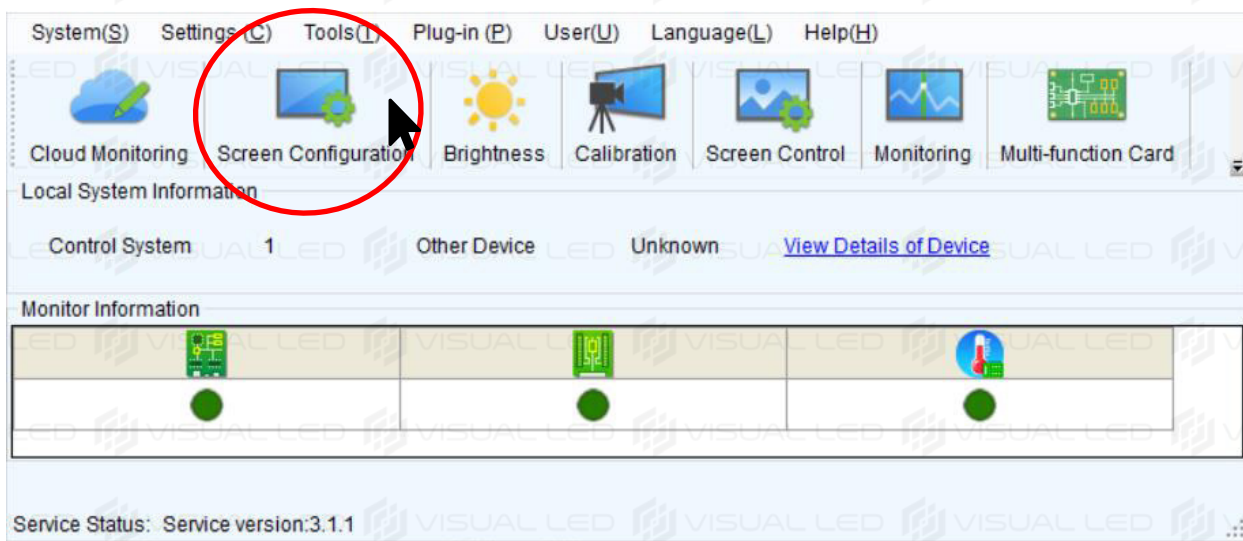
**YOUR PLAYER WILL APPEAR IN THE TERMINALS LIST AS TAURUS-XXXXXXXXXX. SELECT THE PLAYER AND CLICK ON "CONNECT SYSTEM" USING THESE CREDENTIALS: ADMIN / 123456**



**IF THE PLAYER DOES NOT APPEAR, PLEASE NOTE THAT IT MAY TAKE 1 OR 2 MINUTES FOR THE PLAYER TO BE DETECTABLE AFTER IT IS TURNED ON. IF IT STILL DOES NOT APPEAR, CHECK ALL CONNECTIONS, UNPLUG THE PLAYER AND PLUG IT AGAIN. WAIT 2 MINUTES AND CLICK "REFRESH" TO FORCE DETECTION.**



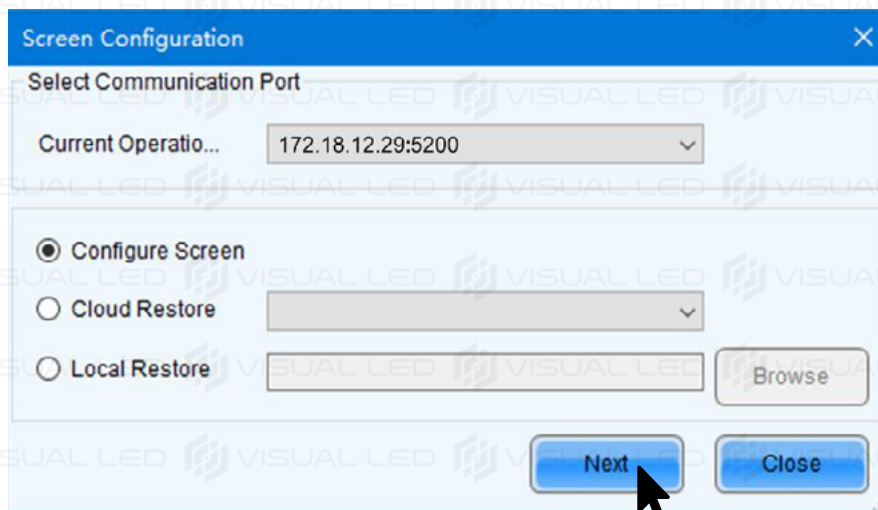
IF THE LOGIN TO THE PLAYER IS CORRECT THE SOFTWARE WILL SHOW NEW BUTTONS LOOKING LIKE THE IMAGE BELOW.



### 3.2 - ACCESS TO SCREEN CONFIGURATION



CLICK ON "SCREEN CONFIGURATION" AND SELECT THE COMMUNICATION PORT CORRESPONDING TO YOUR PLAYER AND THEN CLICK ON NEXT

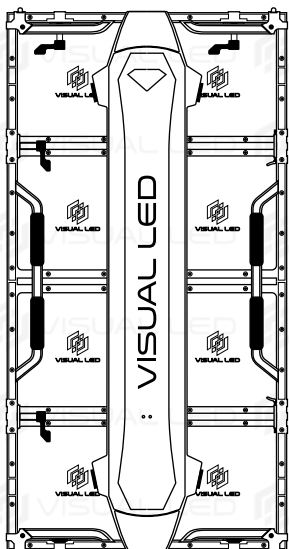




## STEP 4: RECEIVING CARD CONFIGURATION

### 4.1 - IDENTIFY THE POSITION OF YOUR LED CABINETS

#### SCREENS ASSEMBLED WITH CABINETS IN THE VERTICAL POSITION



VERTICAL CABINET



**IF YOUR DISPLAY IS ASSEMBLED WITH VERTICAL CABINETS FOLLOW THESE STEPS:**

A screenshot of a software window titled 'Configuración de la pantalla de visualización-COM99'. It has three tabs: 'Tarjeta de envío', 'Tarjeta receptora' (which is selected and circled in red), and 'Conexión de la pantalla de visualización'. Under the 'Tarjeta receptora' tab, there is a section 'Información del panel de lámparas' with fields for 'Chip' (Chip común), 'Medida' (32W×16H), 'Dirección' (Horizontal), and 'Número de g...' (2). Below this is a section 'Información del cuerpo de caja' with a radio button for 'Regular' (selected) and another for 'Irregular'. There are also input fields for 'Ancho(númer...' (32), 'Altura(númer...' (16), and a dropdown for 'Dirección de ...' (Desde derech). To the right of the 'Regular' radio button, there are partially visible options for 'Ancho' and 'No s'.

**1: GO TO THE “RECEIVING CARD” TAB**

A screenshot of the bottom section of the configuration window. It contains several buttons: 'Cargar desde...', 'Archivo del di...', 'Guardar en el...', 'Leer desde la...' (circled in red with a '2' above it), 'Enviar a la tarj...', 'Restaurar la c...', 'Exportar datos d...', 'Guardar el archi...', 'Solidificar', and 'Cerrar'. There are also some text labels like 'guració...' and 'mación actual...'.

**2: CLICK ON THE “READ FROM RECEIVING CARD” BUTTON.**

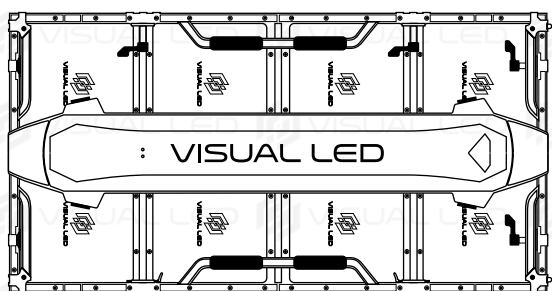
**3: A CARD SELECTION WINDOW WILL APPEAR. LEAVE THE DEFAULT OPTIONS AND CLICK OK.**

**WAIT FOR SOME SECONDS. A MESSAGE WILL APPEAR WHEN THE RECEIVING CARD INFORMATION IS READ. THE FIELDS IN THIS TAB WILL BE AUTOMATICALLY UPDATED WITH THE CORRECT INFORMATION.**

**NOW YOU CAN SKIP THE REST OF THIS SECTION AND GO TO STEP 5.**

A screenshot of a dialog box titled 'Please Select Receiving Card'. It contains the text 'Please Set the Receiving Card Address'. Below this is a section 'Receiving Card Position' with three input fields: 'Sending ...' (containing '1'), 'Port Nu...' (containing '1'), and 'Receivin...' (containing '1'). At the bottom, there are two buttons: 'OK' (circled in red with a '3' above it) and 'Cancel'.

## SCREENS ASSEMBLED WITH CABINETS IN THE HORIZONTAL POSITION



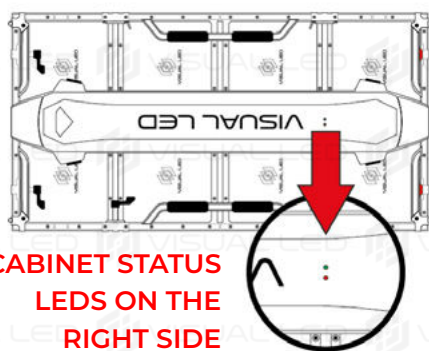
HORIZONTAL CABINET



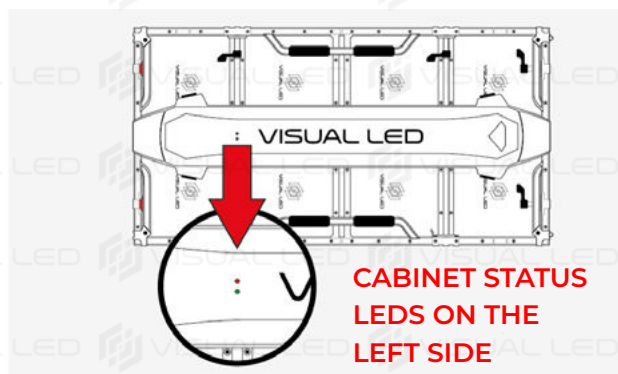
IF YOUR DISPLAY IS ASSEMBLED WITH HORIZONTAL CABINETS, YOU MUST REQUEST YOUR CONFIGURATION FILE BY EMAIL AT [SOPORTE@VISUALLED.COM](mailto:SOPORTE@VISUALLED.COM) AND FOLLOW THE STEPS IN SECTION 4.2

YOU WILL HAVE TO CHOOSE ONE OF THE 2 FILES DEPENDING ON HOW YOU HAVE MOUNTED YOUR CABINETS HORIZONTALLY:

### 90 DEGREES



### 270 DEGREES



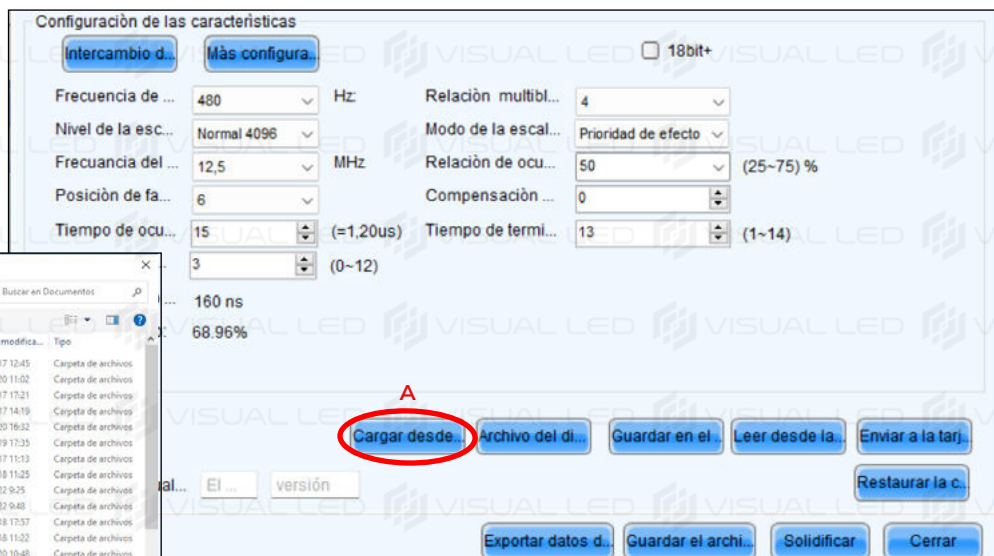
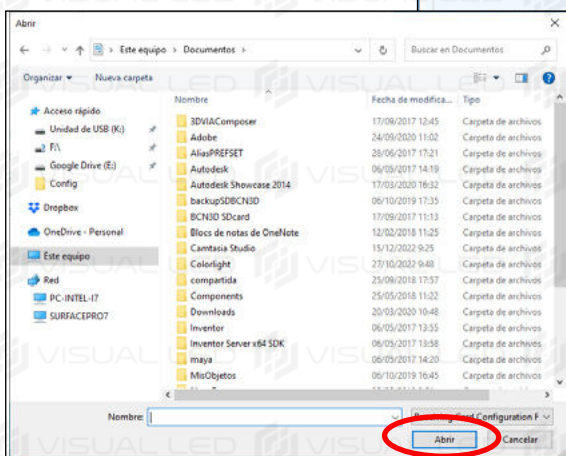
THE DEGREES OF ROTATION OF THE CABINETS ARE ALWAYS COUNTED CLOCKWISE AND FROM A FRONT VIEW OF THE DISPLAY

## 4.2 - LOADING THE RECEIVING CARD CONFIGURATION FILE FOR HORIZONTAL CABINETS



USE THE FILE PROVIDED BY VISUAL LED ACCORDING TO THE ROTATION (90° / 270°) OF THE CABINETS ON YOUR DISPLAY.

**A:** AT THE BOTTOM OF THE WINDOW, CLICK ON THE “LOAD FROM FILE” BUTTON. A WINDOW TO OPEN AN RCFGX FILE WILL APPEAR.



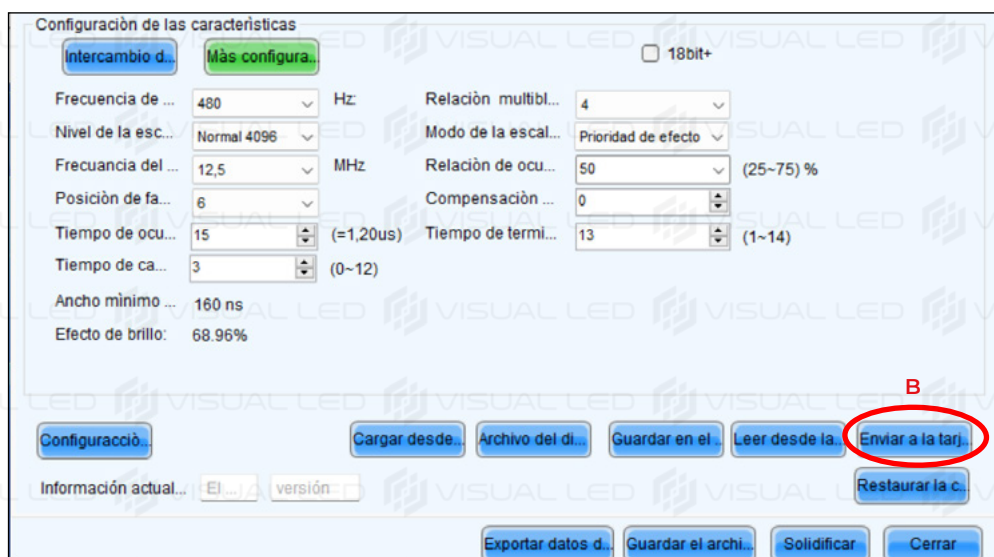
SELECT THE RCFGX FILE SUPPLIED FOR YOUR SCREEN AND CLICK ON OPEN

AFTER LOADING THE FILE, THE RESOLUTION IN PIXELS OF A CABINET WILL BE UPDATED IN THE WIDTH AND HEIGHT SECTION. IT IS INDIFFERENT WHETHER IT APPEARS AS “REGULAR” OR “IRREGULAR”.

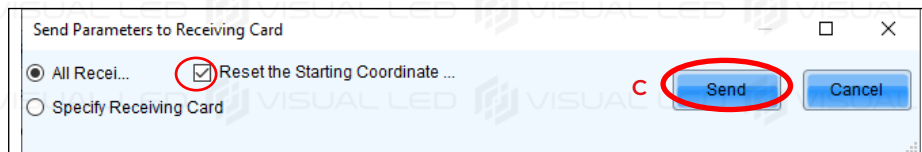


## 4.3 - SENDING THE NEW CONFIGURATION TO THE SCREEN

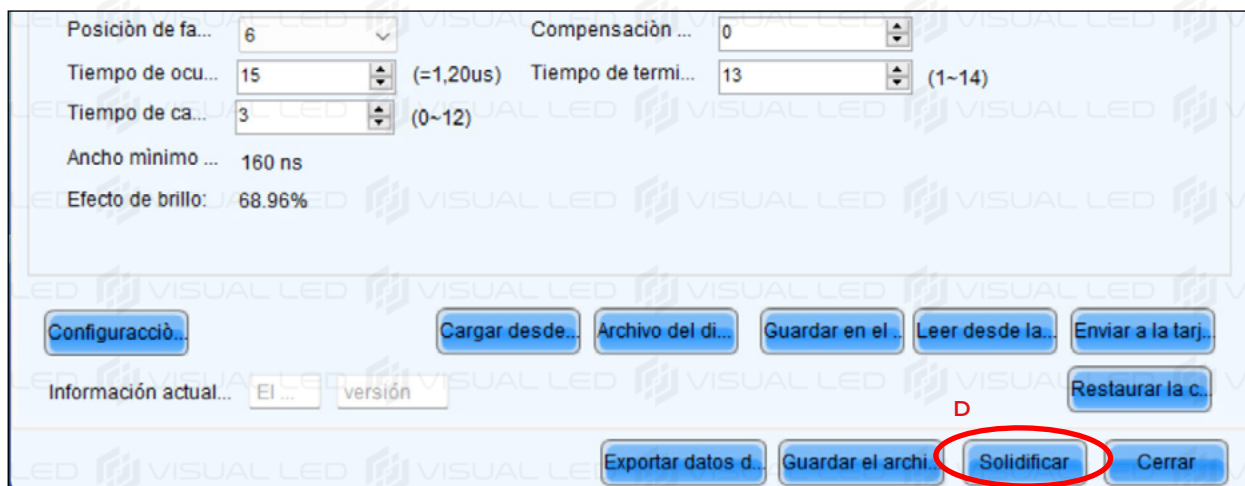
**B:** AT THE BOTTOM, CLICK ON THE “SEND TO RECEIVING CARD” BUTTON. THE “SEND PARAMETERS” WINDOW WILL APPEAR



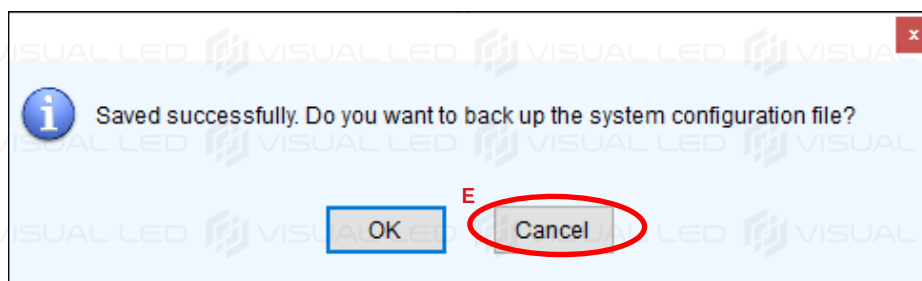
**C:** SELECT THE CHECKBOX “RESET STARTING COORDINATE...” AND CLICK ON SEND. WAIT UNTIL YOU RECEIVE A CONFIRMATION MESSAGE.



**D:** CLICK ON SAVE, WAIT FOR ANOTHER CONFIRMATION MESSAGE.



**E:** CANCEL THE BACK UP





## STEP 5: SCREEN CONNECTION CONFIGURATION

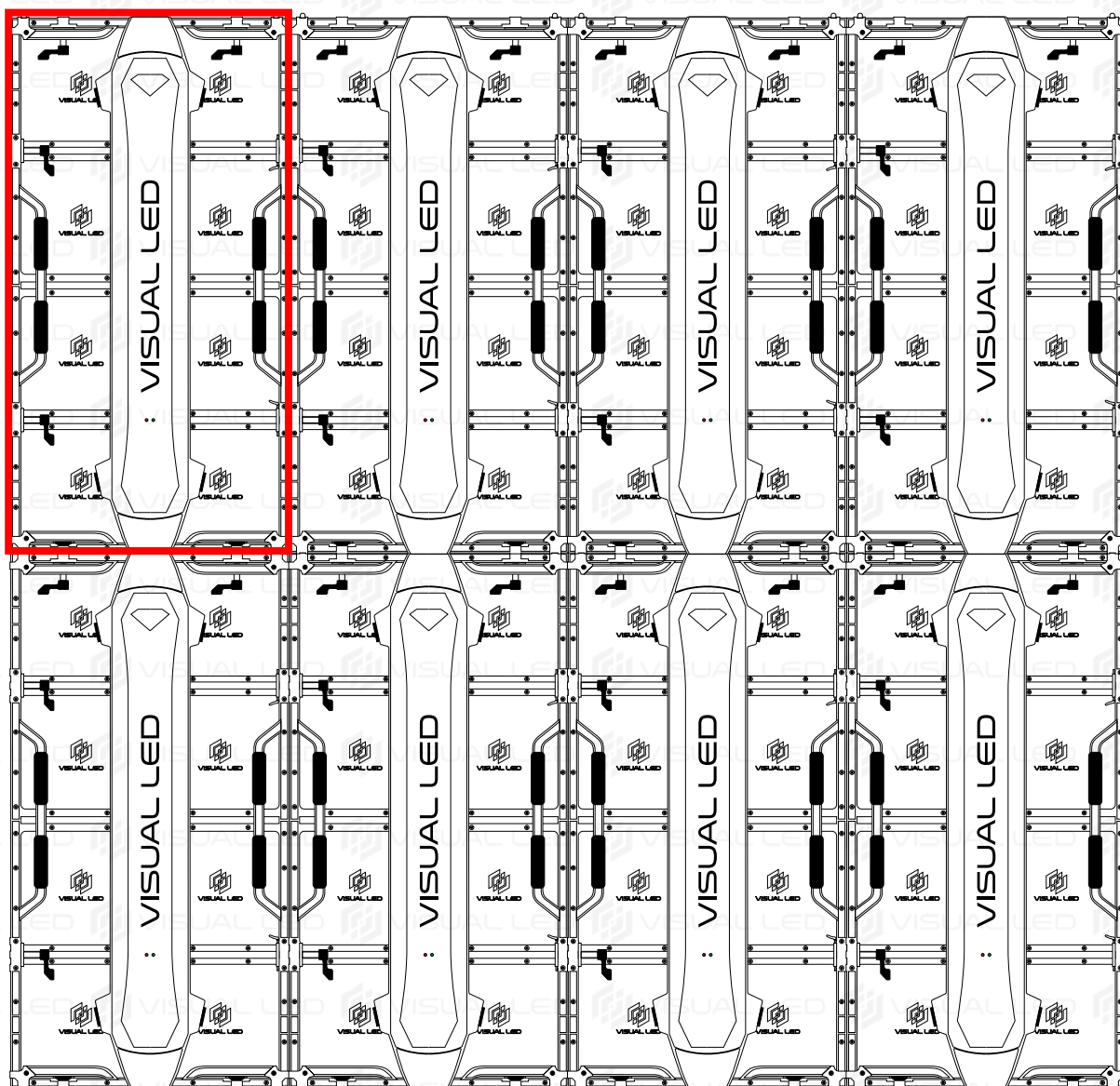
### 5.1 - EXAMPLE OF CONNECTION SETTINGS (CONNECTION TAB OF THE DISPLAY...)



IN THIS SECTION WE CONFIGURE THE POSITION OF THE CABINETS AND THE THE DATA WIRING OF THE SCREEN.

AS AN EXAMPLE WE ARE GOING TO CONFIGURE A SCREEN WITH 8 CABINETS POSITIONED IN 2 ROWS OF 4.

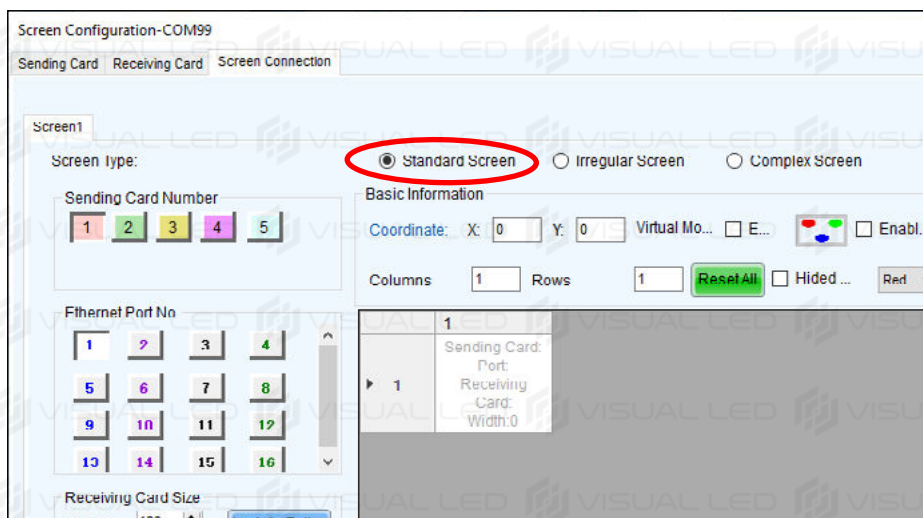
**SINGLE CABINET**



**BASED ON THIS EXAMPLE YOU CAN CONFIGURE THE NUMBER OF CABINETS CORRESPONDING TO THE SIZE OF YOUR SCREEN.**

## 5.2 - SETTING THE NUMBER OF CABINETS FOR YOUR DISPLAY

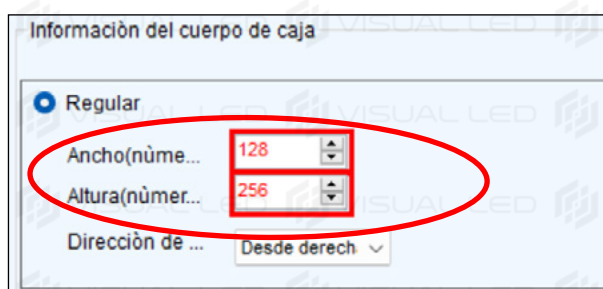
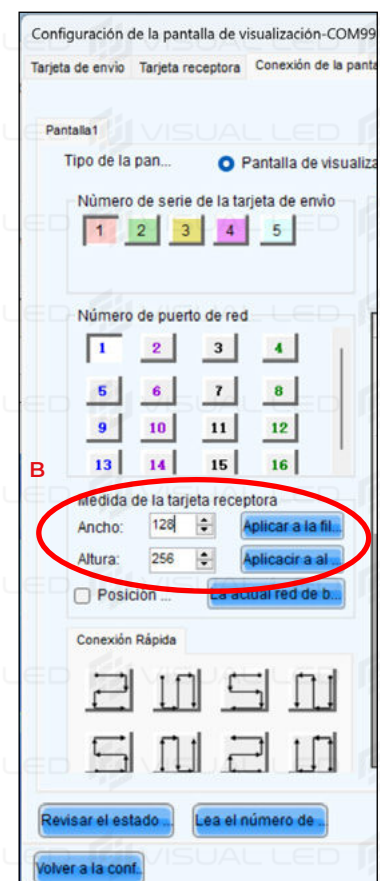
IN THE “SCREEN CONNECTION” TAB, CLICK ON THE “CONFIGURE” BUTTON IN THE UPPER RIGHT CORNER.



**A:** SELECT THE “STANDARD SCREEN” OPTION AT THE TOP OF THE SCREEN.

**B:** ON RECEIVING CARD SIZE, CHECK THAT THE WIDTH AND HEIGHT NUMBERS ARE THE SAME THAT APPEAR ON THE SENDING CARD TAB: CABINET INFORMATION. IF THEY ARE NOT TYPE IN THE PIXEL WIDTH AND HEIGHT TO MATCH IT.

IN CASE THEY DO NOT MATCH, MODIFY THESE NUMBERS AND CLICK ON THE “APPLY TO ROW” AND “APPLY TO COLUMN” BUTTONS.



**C:** GO TO THE “COLUMNS” BOX AND TYPE IN THE NUMBER OF COLUMNS CORRESPONDING TO HOW YOUR SCREEN IS SET UP. ACCORDING TO OUR EXAMPLE WE WILL ENTER 4.

**D:** GO TO THE “ROWS” BOX AND TYPE IN THE NUMBER OF ROWS CORRESPONDING TO HOW YOUR SCREEN IS SET UP. ACCORDING TO OUR EXAMPLE WE WILL ENTER 2.



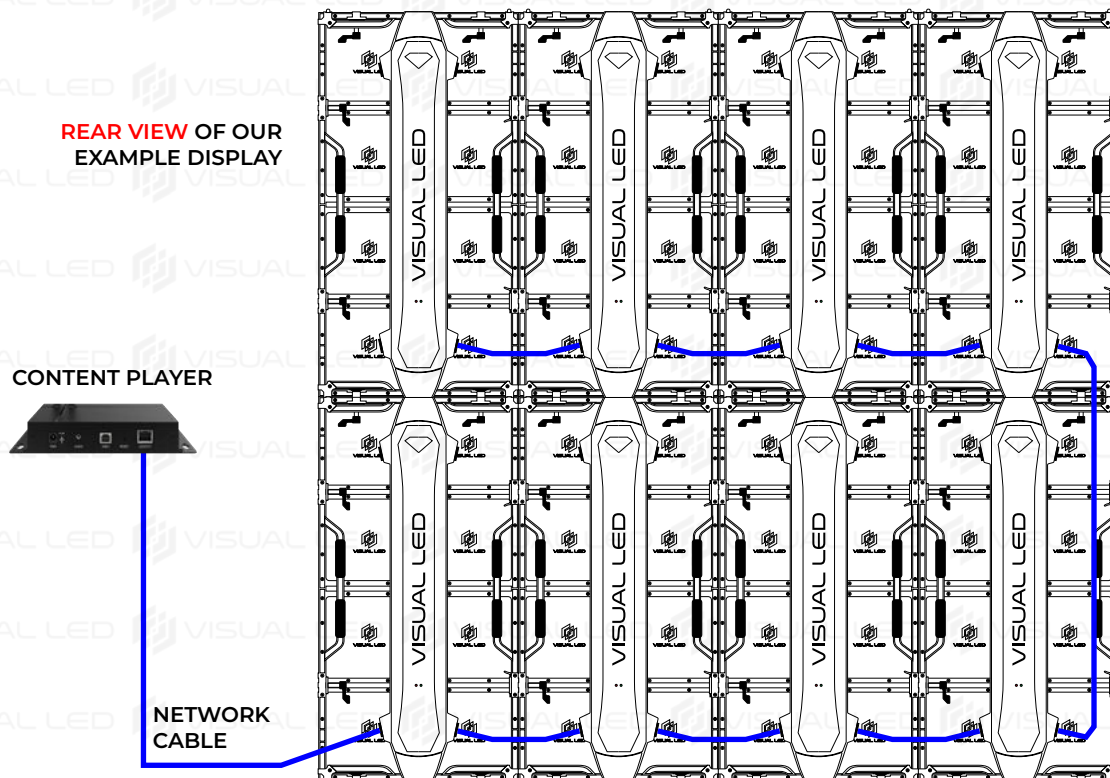
AFTER ENTERING THE NUMBERS OF COLUMNS AND ROWS, WHITE RECTANGLES WILL APPEAR REPRESENTING THE CABINETS THAT MAKE UP OUR DISPLAY. **ADAPT THE NUMBER OF ROWS AND COLUMNS TO FIT YOUR OWN LED DISPLAY.**



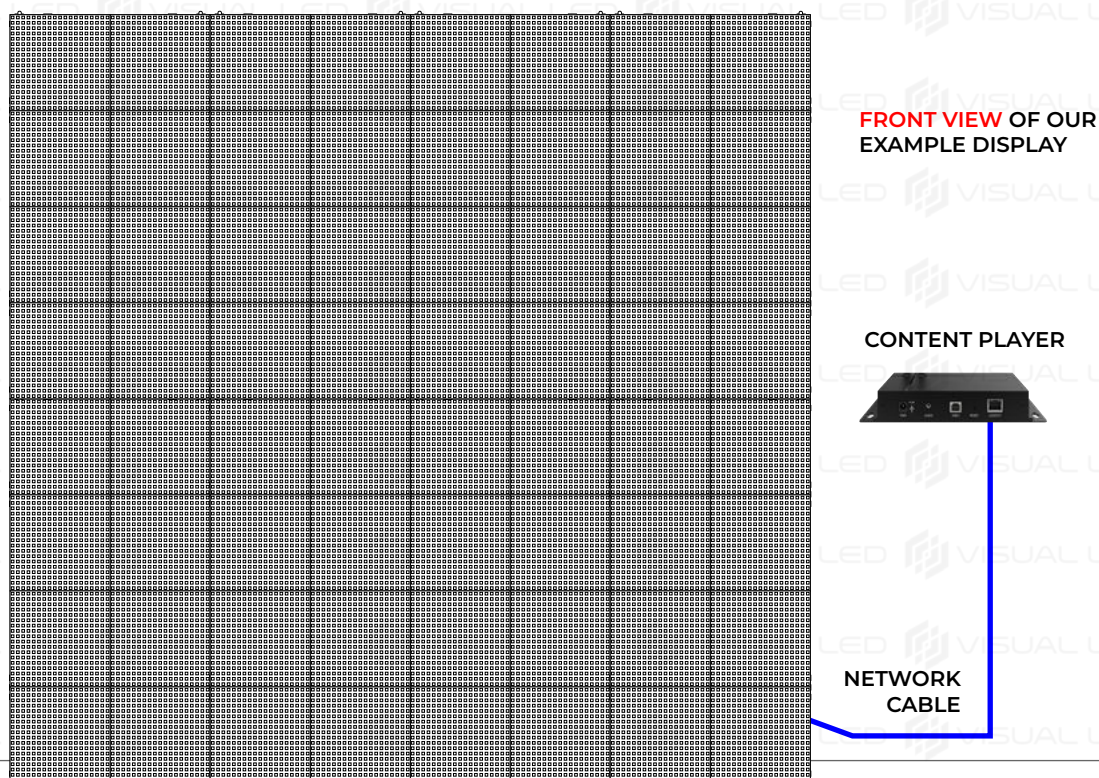
### 5.3 - CONFIGURE DATA WIRING CONNECTIONS



BEFORE WE BEGIN, LET'S TAKE A LOOK AT THE BACK VIEW OF THE DATA WIRING OF OUR EXAMPLE DISPLAY. THE DATA ENTERS THROUGH THE LOWER LEFT CABINET.



**IMPORTANT: IN NOVALCT WE WILL SHOW THE DISPLAY DATA WIRING FROM A FRONT VIEW. THEREFORE, THE DATA WIRING ENTERS FROM THE LOWER RIGHT FRAME.**





NOW WE WILL SET HOW THE SCREEN IS WIRED. WE WILL WORK WITH THE MOUSE BY CLICKING ON THE WHITE FRAMES TO SET THE PATH OF THE SCREEN DATA WIRES.

Columns	4	Rows	2	ResetAll	<input type="checkbox"/> Hidden ...	Red
	1	2	3	4		
1	Sending Card: Port: Receiving Card: Width:0	Sending Card: Port: Receiving Card: Width:0	Sending Card: Port: Receiving Card: Width:0	Sending Card: Port: Receiving Card: Width:0		
2	Sending Card: Port: Receiving Card: Width:0	Sending Card: Port: Receiving Card: Width:0	Sending Card: Port: Receiving Card: Width:0	Sending Card: Port: Receiving Card: Width:0		

**IMPORTANT: THIS CONFIGURATION SCREEN REPRESENTS THE CABINETS FROM A FRONT VIEW.**

IF AT ANY TIME DURING THIS PROCESS WE MAKE A MISTAKE, WE CAN UNDO THE WIRING ORDER BY CLICKING ON THE FRAMES WITH THE RIGHT MOUSE BUTTON. THERE IS ALSO A "RESET" BUTTON TO RESTART THE WIRING.



**WE MUST ALWAYS START BY CLICKING ON THE CABINET WHERE THE DATA ENTERS THE SCREEN FROM A FRONT VIEW.**

IN OUR EXAMPLE IS THE LOWER RIGHT OF THE DIAGRAM. IT WILL LIGHT UP IN PINK.

	1	2	3	4
1	Sending Card: Port: Receiving Card: Width:0	Sending Card: Port: Receiving Card: Width:0	Sending Card: Port: Receiving Card: Width:0	Sending Card: Port: Receiving Card: Width:0
2	Sending Card: Port: Receiving Card: Width:0	Sending Card: Port: Receiving Card: Width:0	Sending Card: Port: Receiving Card: Width:0	Sending Card:1 Port:1 Receiving Card:1 Width:128

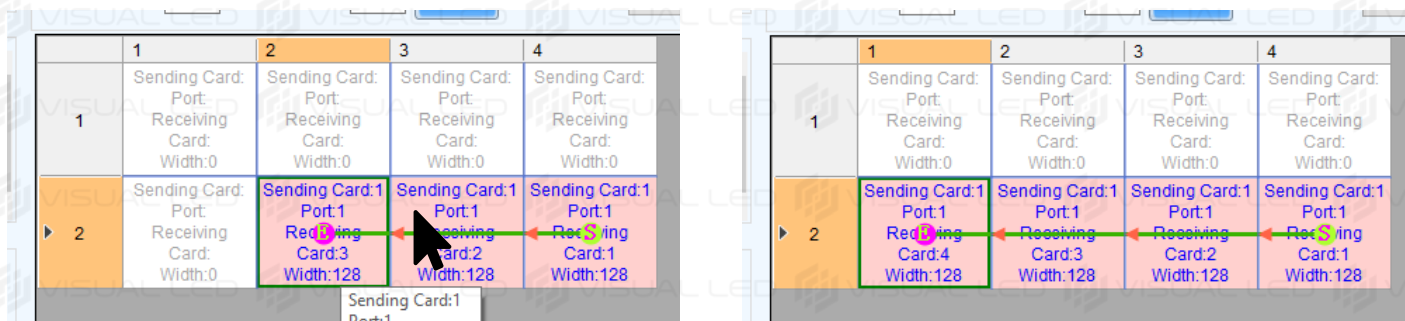
THEN WE CLICK ON THE NEXT CABINET OF THE SAME ROW FOLLOWING THE PATH OF THE DATA CABLES ON THE SCREEN

	1	2	3	4
1	Sending Card: Port: Receiving Card: Width:0	Sending Card: Port: Receiving Card: Width:0	Sending Card: Port: Receiving Card: Width:0	Sending Card: Port: Receiving Card: Width:0
2	Sending Card: Port: Receiving Card: Width:0	Sending Card: Port: Receiving Card: Width:0	Sending Card:1 Port:1 Receiving Card:2 Width:128	Sending Card:1 Port:1 Receiving Card:1 Width:128

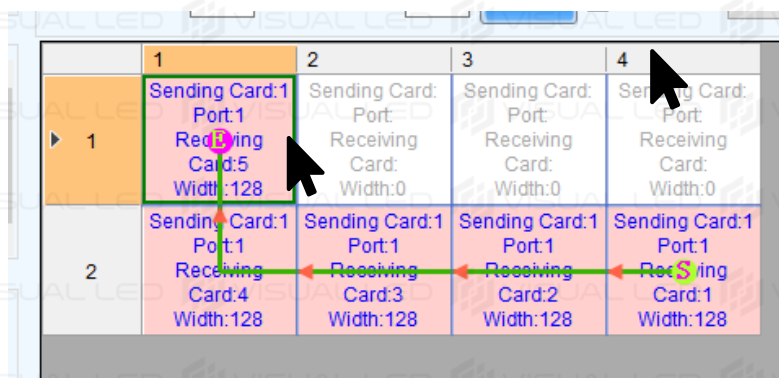
THIS WILL ALSO LIGHT UP PINK AND A LETTER E (END) WILL APPEAR INDICATING THAT IT IS THE LAST CABINET IN THE CIRCUIT AT THIS TIME. A LETTER S (START) WILL APPEAR ON THE FIRST CABINET INDICATING THAT IT IS THE FIRST CABINET IN THE CIRCUIT.



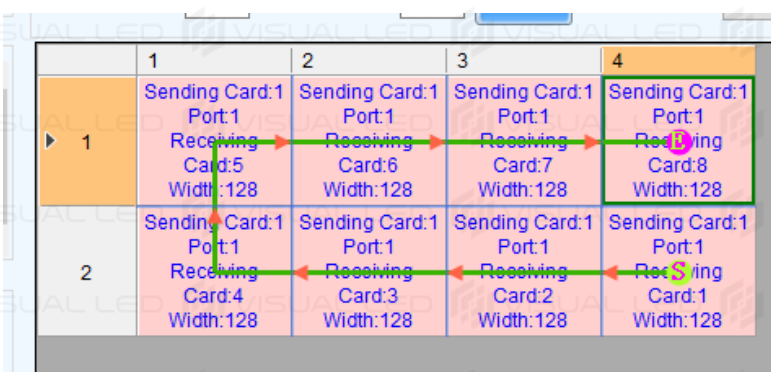
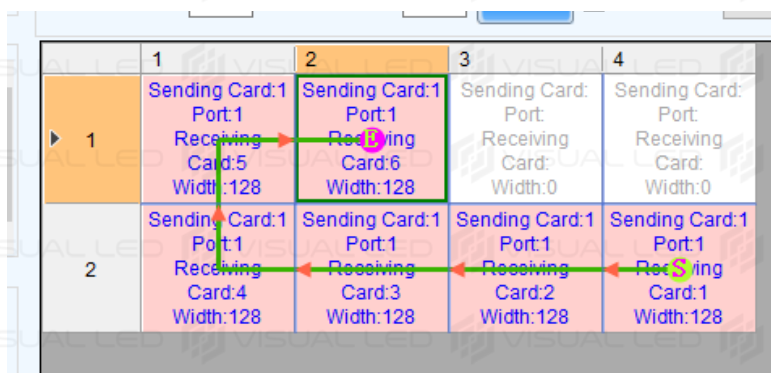
**NOTE THAT IN A HORIZONTALLY ASSEMBLED DISPLAY THE WIRING CIRCUIT WILL BE DIFFERENT (IT WILL PROBABLY GO FROM BOTTOM TO TOP IN COLUMNS). WE CLICK IN ORDER ON THE CABINETS OF THE LOWER ROW FOLLOWING THE WIRING.**



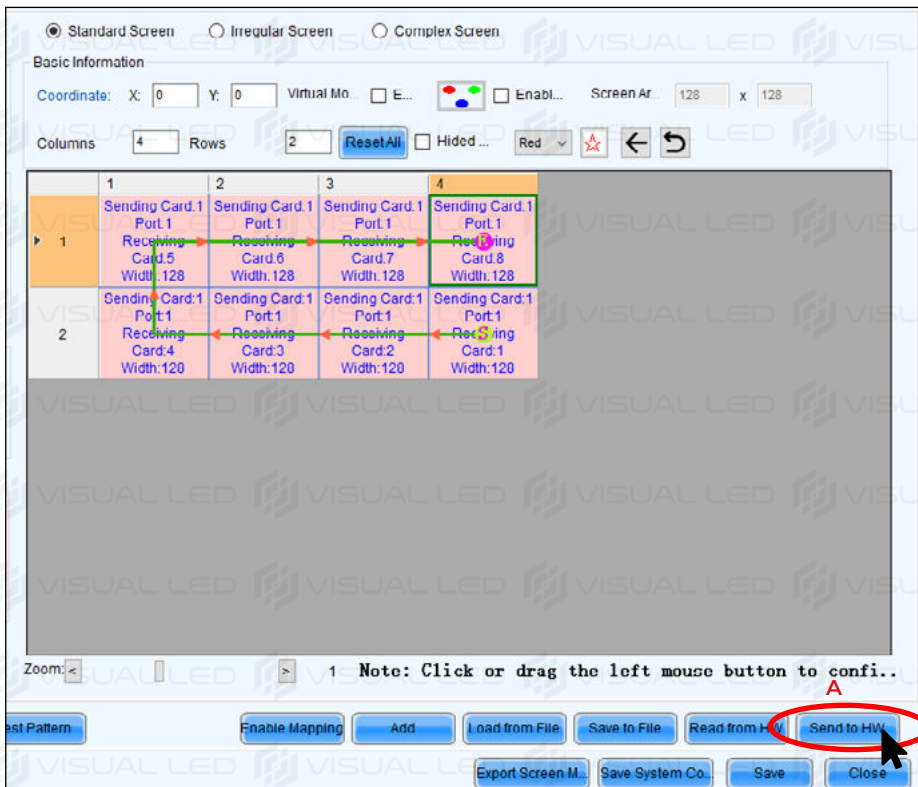
**WHEN WE REACH THE END OF THE ROW WE CLICK ON THE TOP CABINET FOLLOWING THE PATH OF THE NETWORK CABLES ON THE SCREEN.**



**CONTINUE CLICKING IN ORDER ON THE CABINETS UNTIL THE TOP ROW IS COMPLETED.**



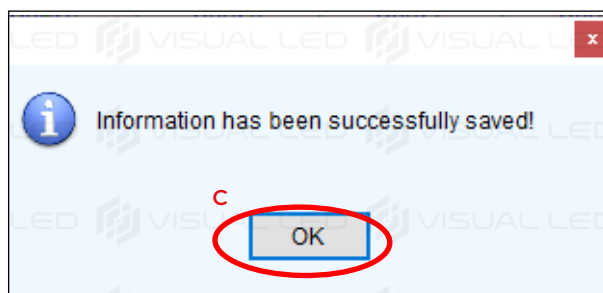
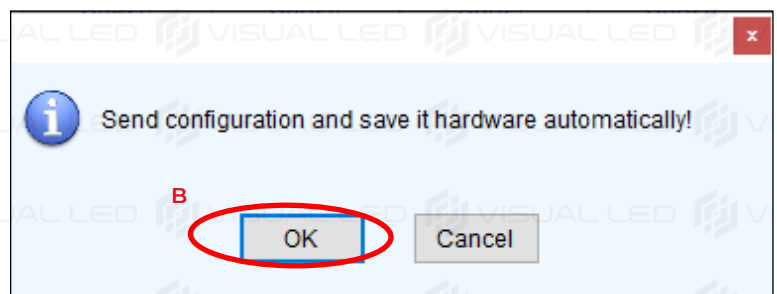
## 5.4 - SENDING THE CONFIGURATION TO THE SCREEN



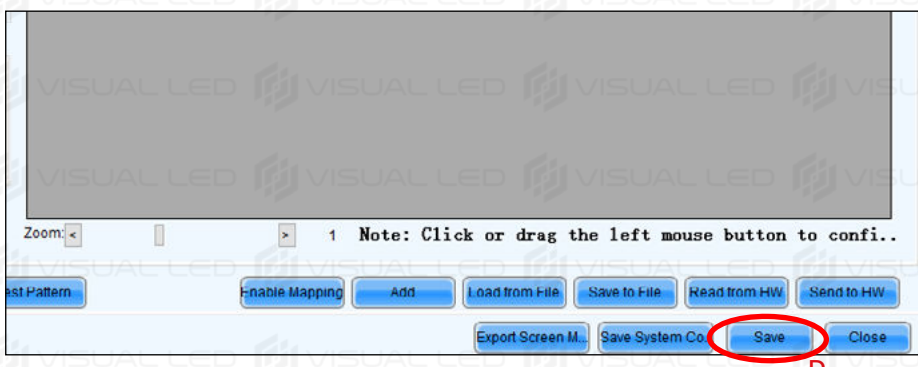
**AFTER DRAWING THE DATA WIRING ON THE CABINETS, WE WILL SEND THIS CONFIGURATION TO THE SCREEN.**

**A: CLICK ON THE “SEND TO HW” BUTTON.**

**B: A CONFIRMATION WINDOW WILL APPEAR: CLICK OK**



**C: WHEN THE CONNECTIONS MAP IS SENT, A CONFIRMATION MESSAGE WILL POP UP. CLICK OK**



**D: CLICK ON THE “SAVE” BUTTON AND WAIT FOR ANOTHER CONFIRMATION MESSAGE**

**ACCEPT THE CREATION OF A CONFIGURATION BACKUP**

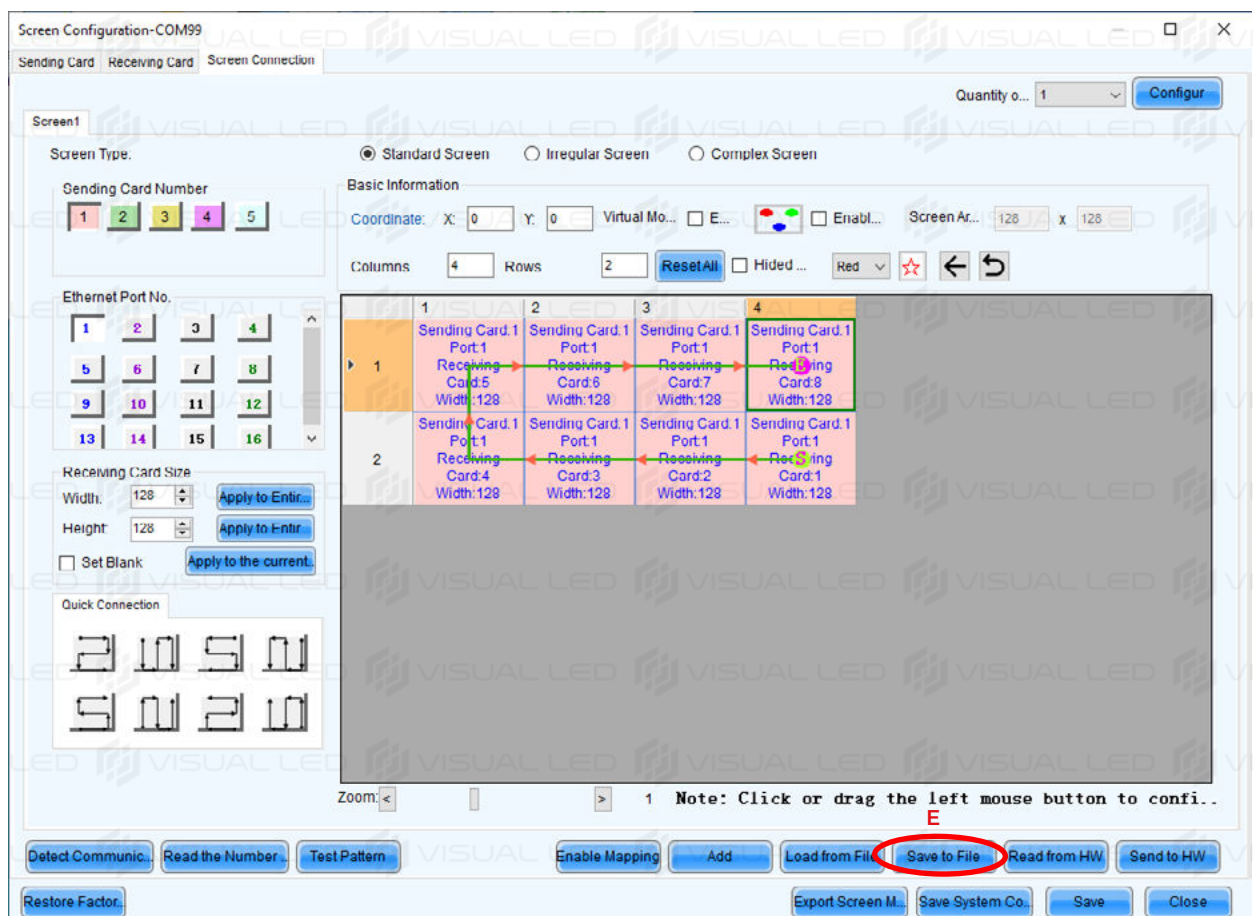


**AFTER THIS STEP YOU SHOULD BE ABLE TO CORRECTLY VIEW THE DEFAULT CONTENTS LOADED IN THE NOVASTAR PLAYER.**

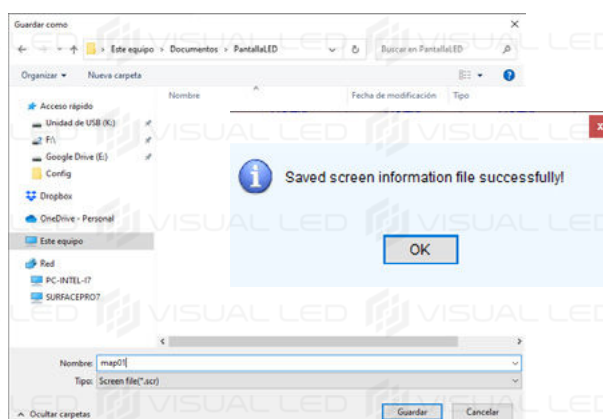
## 5.5 - BACKUP FILE OF THE SCREEN CONNECTION CONFIGURATION



**FINALLY WE WILL MANUALLY SAVE A BACKUP FILE OF THE DATA WIRING CONFIGURATION**



**E: CLICK ON THE “SAVE TO FILE” BUTTON. A WINDOW TO SAVE THE WIRING BACKUP FILE WITH .MAP EXTENSION WILL APPEAR. SAVE IT IN THE SAME FOLDER AS YOUR RECEIVING CARD FILE**



**YOU HAVE NOW SUCCESSFULLY CONFIGURED YOUR LED DISPLAY. YOU CAN CLOSE THIS CONFIGURATION WINDOW AND THE NOVALCT PROGRAM,**

**THIS SOFTWARE IS ONLY USED FOR THE CONFIGURATION OF THE DISPLAY. NOT ALL FUNCTIONS OF THIS SOFTWARE ARE COMPATIBLE WITH ALL DISPLAYS. AFTER A CORRECT CONFIGURATION YOU CAN UNINSTALL IT FROM YOUR SYSTEM.**