








Haltech

ENGINE MANAGEMENT SYSTEMS

PRODUCT CATALOGUE



[Performance Chips](#)

ECU	INJECTION OUTPUTS	IGNITION OUTPUTS	INJECTION STAGES	LOW Q INJECTOR CONTROL	USER INPUTS	USER OUTPUTS	DBW THROTTLE	KNOCK CONTROL	DATA LOGGING	VARIABLE CAMs	WATER PROOFING
 SPRINT 500	4	4	1	✗	2	5	✗	✗	LAPTOP ONLY	✗	IP41
 SPRINT RE	4	4	2	✗	2	5	✗	✗	LAPTOP ONLY	N/A	IP41
 SPORT 1000	4	4	2	✓	9	UP TO 10	✗	✗	LAPTOP & ONBOARD (10 CHANNELS)	2	IP41
 SPORT 2000	UP TO 12	UP TO 6	2	✓	12	UP TO 14	✗	✗	LAPTOP & ONBOARD (10 CHANNELS)	2	IP41
 PRO PLUG-IN	AS PER OEM	AS PER OEM	AS PER OEM	✓	4	4	AS PER OEM	✓	LAPTOP, USB & ONBOARD (20 CHANNELS)	UP TO 4 AS PER OEM	IP41
 ELITE 1500	4	4	4	✓	16	20	✓	SINGLE	USB & ONBOARD (40 CHANNELS)	4	IP67
 ELITE 2500	8	8	4	✓	16	28	✓	DUAL	USB & ONBOARD (40 CHANNELS)	4	IP67

* Some models require an I/O Expander 12

THE FUTURE OF ENGINE MANAGEMENT IS HERE!



Haltech Elite series ECUs take the art of engine management to a whole new level. With a waterproof (IP67) case, drive by wire throttle control, quad variable cam timing control, intuitive self learning software and a host of new features the Elite Series ECUs provide cutting edge technology to tuners and performance enthusiasts worldwide.

Hidden within the Elite's waterproof casing is a sealed compartment with USB ports and a Deutsch DTM4 fully sealed autosport connector.



The Elite connector pinout uses pin locations similar to the Sport range of ECUs, with the addition of more pins controlling all the new features.

ESP SOFTWARE

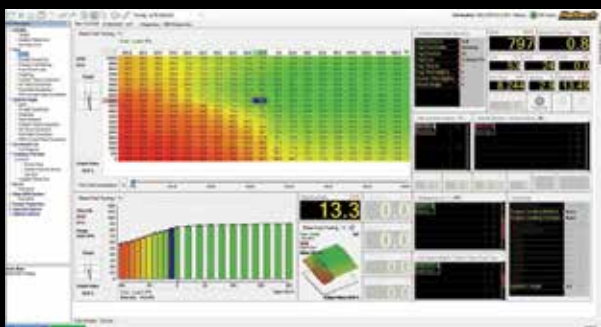
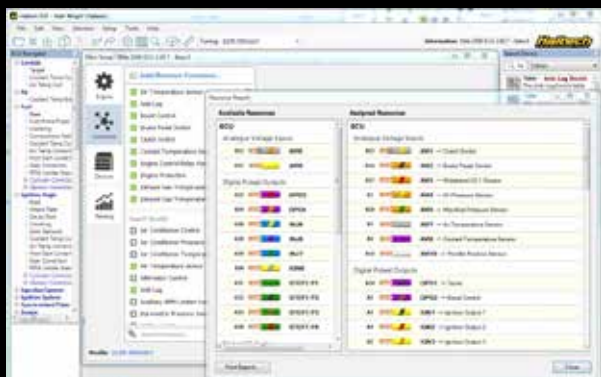
More functions, more flexible maps, upgraded data logging, self learning, and a host of additional features are all contained in the new Elite Series ECUs, but to access them you will need to use the all new ESP software.

ESP which incorporates many industry leading tuning techniques, cutting edge customisable learning features and a user friendly control panel. It also includes ESP Online which helps you stay up-to-date with all the latest software and firmware updates.

ESP Online has been created because the Elite ECU and ESP software are fundamentally different to any of our previous ECUs in that a lot more information is now stored in the unit itself. This speeds up the ESP software, makes it more portable and puts less emphasis on your laptop's specs.

When tuning an Elite ECU, if for whatever reason you don't have all the latest definition files saved on your laptop, your ESP online account will automatically search our servers, find the correct definition file, download it and load it up in the ESP software automatically.

ESP software also makes wiring your ECU a lot easier with its ability to create easy to read wiring diagrams.



ELITE 1500

Part No: HT150900

- 4 x Fuel Injection Outputs
- 4 x Ignition Outputs
- 20 x Digital Outputs
- 10 x Analogue Voltage Inputs
- 6 x Engine Position Inputs
- User definable 5D Tuning
- Programmable Injector Peak and Hold Currents
- Variable cam control
- Dual CAN Bus communication for OEM and Haltech CAN Expansion
- OBDII Capable - Set and clear diagnostic trouble codes, view live engine data
- Auto tune capabilities - Short/Long term fuel, ignition, boost and idle control learning
- Single Channel Knock Control - with high speed digital filtering
- Multi-fuel Support - Support for Petrol (Gasoline), LPG, Methanol and Ethanol
- Closed Loop Boost Control – Multiple Modes – Tune by gear, wheel speed or time
- Closed Loop Idle Control – With learning for consistent idle stability
- Closed Loop O2 Control – Dual bank control for precise tuning
- Anti-Lag and Launch Control – Drag and Rally modes
- Data logging – Up to 40 channels of logging. Sampling rates up to 200Hz (5ms)
- Multi Level Engine Protection – Set limits for sensors and protect your engine



ELITE 2500

Part No: HT151300

- 8 x Fuel Injection Outputs
- 8 x Ignition Outputs
- 28 x Digital Outputs
- 10 x Analogue Voltage Inputs
- 6 x Engine Position Inputs
- User definable 5D Tuning
- Programmable Injector Peak and Hold Currents
- Variable cam control
- Dual CAN Bus communication for OEM and Haltech CAN Expansion
- OBDII Capable - Set and clear diagnostic trouble codes, view live engine data
- Auto tune capabilities - Short/Long term fuel, ignition, boost and idle control learning
- Dual Channel Knock Control - with high speed digital filtering
- Multi-fuel Support - Support for Petrol (Gasoline), LPG, Methanol and Ethanol
- Closed Loop Boost Control – Multiple Modes – Tune by gear, wheel speed or time
- Closed Loop Idle Control – With learning for consistent idle stability
- Closed Loop O2 Control – Dual bank control for precise tuning
- Anti-Lag and Launch Control – Drag and Rally modes
- Data logging – Up to 40 channels of logging. Sampling rates up to 200Hz (5ms)
- Multi Level Engine Protection – Set limits for sensors and protect your engine



PLATINUM SERIES OVERVIEW

The Platinum series of ECUs offer a proven reliable solution for every application from plug and play street cars through to record breaking race cars.

- Intuitive tuning software for faster configuration and tuning.
- One programming software for all Platinum products.
- Volumetric efficiency (VE) based tuning.
- Quick & easy USB connectivity.
- On board CAN port for quick plug'n'play expansion.
- Improved data logging capability on all models using new Data Log Viewer software.

ECU MANAGER

Integrated Tuning Environment

ECU Manager integrates management of your maps, sensor calibration files, laptop data-logging, on-board data-logging retrieval and device firmware in the one neat package, allowing full control of your ECU.

Extensive Help pages are accessible from within ECU Manager to provide convenient access to information required for installing, setting up and tuning your ECU.

Real Time Tuning

ECU Manager maintains the simple increment and decrement interface that many of our customers have grown accustomed to, but adds additional tuning tools such as linearization of regions in two dimensions. The expanded tuning tools enable quick and efficient tuning of your engine management tables. All tuning tables utilize the Haltech patented real time tuning technology.

Customizable Displays

ECU Manager allows you to tune your ECU with ease while monitoring all the vital parameters of your engine on easy to read gauges and displays. The intuitive interface, is not only functional, but can be fully customized with multiple user definable display pages that you can create to suit your individual needs.

- Numeric, 2D and 3D views for 3D maps
- Simple drag and drop actions allow gauges to be moved and resized
- Gauges can be added with a few clicks of the mouse
- Tuning pages can be saved and loaded and even e-mailed to share your pages with other Haltech ECU Manager users.



PLATINUM SPORT SERIES

Features and user definable outputs common to both ECUs are available as standard and include, but are not limited to:

Features:

- Flex Fuel Ready. 0-100% Ethanol blending with fuel, ignition and boost corrections.
- Custom sensor calibration to use your own sensors
- Onboard and laptop data logging with Data Viewer software
- Wideband "auto tuning" using user definable target AFR table
- Narrow and Wideband closed loop O2 control
- Staged injection control for multiple injectors per cylinder (inc rotary)
- 3D mapped rotary engine ignition split
- Soft and hard cut rev limiter
- Tuning via T.P.S. with manifold pressure correction
- EGT fuel correction
- Dual map switching for fuel/ignition/boost
- Rally style Anti-lag
- Launch control Anti-lag
- Rotational idle
- "In the Field" updatable Firmware provides all the new features as soon as they are available

User-definable outputs:

- VTEC cam timing control
- VANOS cam control (intake cam only)
- Variable intake cam control
- Dual intake runner control
- Thermo-fan control (Duty cycle or on/off)
- Intercooler fan/spray
- Engine control relay function
- Aux fuel pump control
- Open or Closed loop boost control (Road speed, RPM or gear based mapping)
- Closed loop idle control (Stepper motor and BAC type)
- Extra Injector control
- Alternator control
- Nitrous switching with fuel/ignition correction
- Staged shift lights
- Tacho output (5v,8v,12v)
- Turbo timer
- Torque converter lock up
- Air con request/idle up

Supported CAN devices: (Add up to 24 more I/O channels)

- Racepak Dash data acquisition systems
- I/O Expander 12
- TC Amplifier 2, TC Amplifier 4
- CAN Hub
- Wideband O2, WB1 and WB2



PLATINUM SPORT 1000

With 8 channels capable of controlling injection and ignition duties, the Platinum Sport 1000 can support most modern engines (including 2 Rotor engines) with multi-coil or conventional distributor ignition systems as well as Haltech and aftermarket CDI systems.

It is capable of controlling sequential fuel injection and direct fire ignition on engines up to 4 cylinders, or semi-sequential fuel injection and waste spark ignition up to 8 cylinders.

- Supports Hall effect , Optical and Inductive Magnetic Reluctor Trigger types
- Tuning via Volumetric Efficiency (VE) or Injection Time - 32 x 32 mapping
- Built in MAP Sensor rated to 150kPa (up to 1.5 Bar or 22psi boost)
- Up to 10 additional user-definable auxiliary outputs
- 9 additional user-definable auxiliary inputs
- USB and CAN communication ports



Part No: HT051300

PLATINUM SPORT 2000

With 14 channels capable of controlling injection and ignition duties, the Platinum Sport 2000 can support most modern engines (including 3 and 4 Rotor engines) with multi-coil or conventional distributor ignition systems as well as Haltech and aftermarket CDI systems.

It is capable of controlling sequential fuel injection on 4, 6, 8, 10 and 12 cylinder engines and direct fire ignition on engines up to 6 cylinders, or waste spark ignition on engines up to 10 cylinders.

- Supports Hall effect , Optical and Inductive Magnetic Reluctor Trigger types
- Tuning via Volumetric Efficiency (VE) or Injection Time - 32 x 32 mapping
- Built in MAP Sensor rated to 150kPa (up to 1.5 Bar or 22psi boost)
- Up to 14 additional user-definable auxiliary outputs
- 12 additional user-definable auxiliary inputs
- USB and CAN communication ports

Part No: HT051400



PLATINUM SPORT GM

Supported Models: (please consult with Haltech for your specific application)

- Holden Commodore VN-VP (auto and manual), VR-VS (manual only)
- Camaro, Firebird, Corvette 86-89 (V8 TBI and TPI)
- Chev Truck/Van and S10 Pickup 87-92 (TBI and TPI)

Features:

- Direct plug and play replacement of the OEM ECU, no rewiring necessary
- Uses the car's factory sensors
- Real time programming, instant hesitation free adjustment
- Fully user definable 32 x 32 mapping
- Tuning via Volumetric Efficiency (VE) or Injection time
- Selectable onboard internal MAP sensor rated to 150kPa (up to 1.5 Bar or 22psi)
- Wideband "auto tuning" using user definable target AFR table
- USB and CAN Communication Port supporting the following CAN devices:
 - Racepak Dash data acquisition systems
 - I/O Expander 12
 - TC Amplifier 2, TC Amplifier 4
 - CAN Hub

Part No: HT051100



Included in the Kit:

Sport GM ECU, USB Cable, Programming Software and Instruction CD, Quick Start Guide, Haltech Sticker Sheet.



I/O Box Required



Platinum Sport Series ECUs offer proven performance and are ideal for builders and tuners looking for powerful yet easy to use engine management solution.



PLATINUM SPRINT SERIES

Platinum Sprint ECUs are entry level ECUs ideal for builders and tuners looking for great value for money. Sprint ECUs offer many features found on the top of the range ECUs:

Features:

- "In the Field" updatable Firmware provides all the new features as soon as they are available
- Laptop data logging with Data Log Viewer software
- Custom sensor calibration to use your own sensors
- Fully user-definable 16x16 mapping
- Launch control via Auxiliary Rev Limiter
- Wideband "auto tuning" using user definable target AFR table
- Narrow and Wideband closed loop O2 control
- Staged injection control (Sprint RE only)
- 3D mapped rotary engine ignition split (Sprint RE only)
- Soft and hard cut rev limiter
- Tuning via T.P.S. with manifold pressure correction
- Engine Protection

User-definable outputs:

- VTEC cam timing control
- Dual intake runner control
- Open loop boost control (Road speed or RPM based mapping)
- Open loop idle control (BAC type)
- Thermo-fan control (Duty cycle or on/off)
- Intercooler fan/spray
- Engine control relay function
- Aux fuel pump control

Supported CAN devices: (Add up to 18 more I/O channels)

- Racepak Dash data acquisition systems
- I/O Expander 12
- TC Amplifier 2, TC Amplifier 4
- CAN Hub



PLATINUM SPRINT 500

With 8 channels capable of controlling injection and ignition duties, the Platinum Sprint 500 can support most modern piston engines with multi-coil or conventional distributor ignition.

- Built in MAP Sensor rated to 150kPa (Up to 1.5 Bar or 22psi boost)
- Tuning via Volumetric Efficiency (VE) or Injection Time - 16 x 16 mapping
- Supports sequential, semi-sequential, batch or multi-point injection patterns
- Supports Hall effect, Optical and Inductive Magnetic Reluctor Trigger types
- Custom Sensor Calibrations allows for most factory sensors to be used
- USB and CAN communication ports
- Tacho, Thermo Fan and Fuel Pump Output
- 2 x User Programmable Outputs



Part No: HT050700

PLATINUM SPRINT RE

Optimized specifically for 2 Rotor Engines - 2nd Generation RX7 (FC3S)/Turbo II, 3rd Generation RX7 (FD3S) and RX8 (SE3P)

- Built in MAP Sensor rated to 150kPa (Up to 1.5 Bar or 22psi boost)
- Tuning via Injection Time - 16 x 16 mapping
- Supports staged injection
- Supports factory Mazda Inductive Magnetic Reluctor Trigger types
- Custom Sensor Calibrations allows for most factory sensors to be used
- USB and CAN communication ports
- Tacho, Thermo Fan and Fuel Pump Output
- 2 x User Programmable Outputs



Part No: HT050900

PLATINUM PRO PLUG-IN SERIES

Specifically engineered to replace the OEM ECU in your vehicle, the Pro Plug-In ECU range offers maximum flexibility whilst retaining critical factory functions.

Features:

- Direct plug and play replacement of the OEM ECU, no re-wiring necessary.
- Uses the vehicle's OEM sensors and engine hardware
- Flex Fuel Ready. 0-100% Ethanol blending with fuel, ignition and boost corrections. Some models may require an I/O Expander 12.
- Custom sensor calibration to use your own sensors if required
- Supports Sequential Injection (peak and hold) and direct fire ignition
- Fully user definable 32 x 32 mapping
- Onboard and laptop data logging with Data Log Viewer software
- Tuning via Volumetric Efficiency (VE), Injection time or Lambda Correction (MAF)
- Diagnostic trouble code storing and Check Engine light control
- Selectable onboard internal MAP sensor rated to 150kPa (up to 1.5 Bar or 22psi)
- Wideband "auto tuning" using user definable target AFR table
- "In the Field" updatable firmware provides all the new features as soon as they are available
- USB and CAN communication port
- Knock control
- Closed loop O2 control
- Long term fuel and ignition trims
- Soft and hard cut rev limiter
- Closed and Open Loop Boost Control
- Over 30 user definable correction tables
- Overboost Protection
- Fuel Composition (E85/Flex Fuel support - requires I/O Expander 12)
- Speed Limiter
- Rally style Anti-lag and Launch control
- Rotational idle
- Decel Fuel Cut
- Engine Protection

Expansion I/O: (via an on-board auxiliary connector)

• 2 x Analogue Voltage inputs configurable for:

Aux Rev Limiter, Flat Shift, NOS Enable, Fuel Pressure Sensor, External Map Sensor (Up to 5 Bar), Oil Pressure Sensor, Wideband O2 Sensors etc.

• 2 x Analogue Temperature inputs configurable for:

Exhaust Gas Temperature Sensors, Fuel Temperature Sensors, Oil Temperature Sensors, Diff Temperature Sensor, Gearbox Temperature Sensor, Generic Temperature Sensors etc.

• 4 x Digital outputs configurable for:

Air Temperature Switch, Aux Fuel Pump, Boost Control, Battery Light, Generic Duty Output, Nitrous Activation Switch, Discrete ON/OFF Switches etc.

Supported CAN devices: (Add up to 36 more I/O channels)

- Racepak Dash data acquisition systems
- I/O Expander 12
- TC Amplifier 2, TC Amplifier 4
- CAN Hub
- Wideband O2, WB1 and WB2

PLATINUM PRO PLUG-IN Nissan Skyline R32/33

Applications:

Nissan Skyline R32, Nissan Skyline R33 Variations: GT-R, GTS-t
RB25DET, RB26DETT engines. Manual only.

Included in the Kit:

Pro Plug-in ECU, USB Cable, Programming Software and Instruction CD,
Quick Start Guide, Haltech Sticker Sheet.



Part No: HT055001

PLATINUM PRO PLUG-IN Nissan Skyline R34 GTR

Applications:

Nissan Skyline R34 GT-R. RB26DETT engine.

Included in the Kit:

Pro Plug-in ECU, USB Cable, Programming Software and Instruction CD,
Quick Start Guide, Haltech Sticker Sheet.



Part No: HT055006

PLATINUM PRO PLUG-IN Nissan 300ZX Z32

Applications:

Nissan 300ZX. VG30DETT
and VG30DE engines. Manual Only.

Included in the Kit:

Pro Plug-in ECU, USB Cable, Programming
Software and Instruction CD, Quick Start Guide,
Haltech Sticker Sheet.



Part No: HT055007

PLATINUM PRO PLUG-IN Nissan 350Z Z33

Applications:

Nissan 350Z, Nissan Skyline V35,
Infiniti G35. VQ35DE engine
(Does not suit VQ35HR).
Supports OEM DBW single throttle.
Manual Only.

Included in the Kit:

Pro Plug-in ECU, USB Cable, Programming
Software and Instruction CD, Quick Start Guide,
Haltech Sticker Sheet, ECU Mounting Kit.



Part No: HT055016

PLATINUM PRO PLUG-IN Nissan R34 GT-T

Applications:

Nissan Skyline R34 GT-t
WC34 Series Stagea
RB25DET, RB25DE, RB20DE
Manual Transmission only

Part No: HT055105

Included in the Kit:

Pro Plug-in ECU, USB Cable,
Programming Software and Instruction CD,
Quick Start Guide, Haltech Sticker Sheet.



PLATINUM PRO PLUG-IN Nissan Patrol Y61 TB48

Applications:

Nissan Patrol Y61. TB48DE engine. Manual Only.

Included in the Kit:

Pro Plug-in ECU, USB Cable, Programming Software and Instruction CD,
Quick Start Guide, Haltech Sticker Sheet.

Part No: HT055014



PLATINUM PRO PLUG-IN Nissan Silvia S15

Applications:

Nissan Silvia S15 (ADM & JDM). SR20DET engine. Manual only.
Nissan Silvia S14 Series 2. SR20DET engine. Manual only.

Included in the Kit:

Pro Plug-in ECU, USB Cable, Programming Software and Instruction CD,
Quick Start Guide, Haltech Sticker Sheet.

Part No: HT055012



PLATINUM PRO PLUG-IN Subaru WRX 01-05

Applications:

Subaru WRX & STi 01-05 version 7-9. (non USA). EJ205 engine. Manual only.
Subaru WRX 01-05 version 7-9. (USA only). EJ205 engine.

Included in the Kit:

Pro Plug-in ECU, USB Cable, Programming Software and Instruction CD,
Quick Start Guide, Haltech Sticker Sheet.

Part No: HT055174



PLATINUM PRO PLUG-IN Hyundai Genesis BK Theta

Applications:

Hyundai Genesis (USA only). 2.0L turbo Theta engine. Manual only. Supports OEM DBW throttle.

Included in the Kit:

Pro Plug-in ECU, USB Cable, Programming Software and Instruction CD, Quick Start Guide, Haltech Sticker Sheet, ECU Mounting Kit.

Part No: HT055045



PLATINUM PRO PLUG-IN

Honda Integra DC5

Applications:

Honda DC5 / Acura RSX 2005 – 2006. K20Z1 engine. Manual Only.

Included in the Kit:

Pro Plug-in ECU, USB Cable, Programming Software and Instruction CD, Quick Start Guide, Haltech Sticker Sheet.

Part No: HT055048



PLATINUM PRO PLUG-IN

Mitsubishi Evo 9

Applications:

Mitsubishi Evolution 9 (JDM, USA, AUS & RHD Euro models only)

Mitsubishi Evolution 8 MR (JDM, AUS & RHD Euro models only)

4G63 engine. Manual Only. Not suitable for USA Spec Evolution 8 MR

Included in the Kit:

Pro Plug-in ECU, USB Cable, Programming Software and Instruction CD, Quick Start Guide, Haltech Sticker Sheet.

Part No: HT055064



PLATINUM PRO PLUG-IN Honda S2000 AP1

Applications:

Honda S2000 AP1. F20C engine.

Honda S2000 AP2 F22C engine (non drive-by-wire models only).

Included in the Kit:

Pro Plug-in ECU, USB Cable, Programming Software and Instruction CD,
Quick Start Guide, Haltech Sticker Sheet.



Part No: HT055050

PLATINUM PRO PLUG-IN Honda Civic EP3

Applications:

Honda Civic EP3 2002 – 2005. K20A3 / K20A engines.

Honda Integra DC5 / Acura RSX 2002 – 2004. K20A engine. Manual Only.

Included in the Kit:

Pro Plug-in ECU, USB Cable, Programming Software and Instruction CD,
Quick Start Guide, Haltech Sticker Sheet.

Part No: HT055047



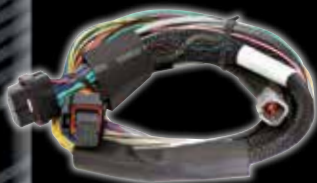
ECU HARNESSSES

Wiring up your race car or doing an engine transplant? Look no further, Haltech offers a comprehensive range of Platinum and Elite harnesses that will help you wire in your stand-alone Haltech ECU to just about any popular performance engine.

Elite Wire-in Harness - Premium

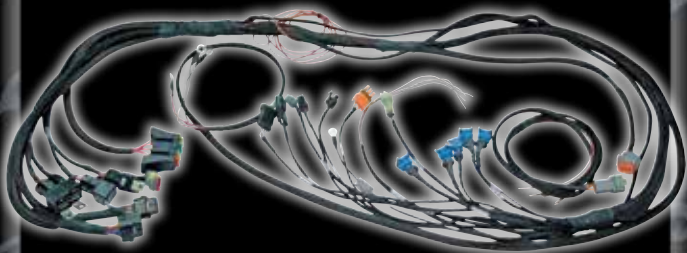


Elite Wire-in Harness - Basic



Universal Wire-in Harnesses

Haltech's Universal Wire-in Harnesses are ideal for applications where custom wiring on the engine's end is required.



Terminated Engine Harnesses

All Haltech Terminated Engine Harnesses come complete with clearly marked OEM connectors and are the most time and cost effective way to wire your Elite or Platinum Series to your race car or engine conversion.



Plug'n'Play Adaptor Harnesses

Plug'n'Play Adaptor Harnesses provide a plug-in solution for engines not supported by Haltech Pro Plug-in range. Plug'n'Play Adaptor Harnesses plug in directly into the factory harness and connects it with a Haltech ECU. Ideal solution for builders and tuners who want a quick and easy install without the need to rewire the whole system.

UNIVERSAL WIRE-IN HARNESSES

Universal Wire-in Harnesses	Part Number
Platinum Sprint 500 Autospec Long Loom 2.5m (8ft)	HT-040702
Platinum Sprint RE Autospec Long Loom 2.5m (8ft)	HT-040902
Platinum Sport 1000 Autospec Short Loom 1.2m (4ft)	HT-041301
Platinum Sport 1000 Autospec Long Loom 2.5m (8ft)	HT-041302
Platinum Sport 2000 Autospec Short Loom 1.2m (4ft)	HT-041401
Platinum Sport 2000 Autospec Long Loom 2.5m (8ft)	HT-041402
Elite 1500 Universal Wiring Harness - Basic 1.2m (4ft)	HT-140901
Elite 1500 Universal Wiring Harness - Premium 2.5m (8ft)	HT-140904
Elite 2500 Universal Wiring Harness - Basic 1.2m (4ft)	HT-141301
Elite 2500 Universal Wiring Harness - Premium 2.5m (8ft)	HT-140304

PLUG'N'PLAY ADAPTOR HARNESSES

Platinum Sport 1000 Plug'n'Play Adaptor Harnesses	Part Number
Nissan N14 GTIR (90-95)	HT-051310
Nissan S13 CA18	HT-051311
Nissan S13 SR20 DET	HT-051312
Nissan S14s1 "Zenki"	HT-051313
Mazda RX7 FC3S-S4	HT-051320
Mazda RX7 FC3S-S5	HT-051321
Mazda RX7 FD3S-S6 (92-95) (2 row ECU plug - single turbo conv only)	HT-051322
Mazda RX7 FD3S-S7&8 (96-02) (4 row ECU plug - single turbo conv only)	HT-051329
Mazda MX5 NB 1.8 SP (factory turbo) (3 Plug / 3 Row ECU)	HT-051319
Mazda MX5 NA 1.6 (2 Plug ECU)	HT-051323
Mazda MX5 NA 1.8 (2 Plug ECU)	HT-051324
Mazda MX5 NB 1.8 (99 Model) (3 Plug/2 Row ECU)	HT-051325
Mazda MX5 NA 1.8 Special & Anniversary Models (3 Plug ECU)	HT-051326
Mazda MX5 NB 1.8 Non VCT (00-04) (3 Plug / 3 Row ECU)	HT-051327
Mazda MX5 NB 1.8 VCT (00-04) (3 Plug / 3 Row ECU)	HT-051328
Honda OBD-1	HT-051332
EVO 1,2,3,GSR and RVR	HT-051340
EVO 4,5,6	HT-051341
EVO 6.5	HT-051342
EVO 7 (Manual transmission only)	HT-051347
EVO 8 (5-speed)	HT-051344
Mitsubishi Galant VR4/1G DSM (89-94)	HT-051343
Mitsubishi 2G DSM (95-99)	HT-051346
Subaru RS Liberty & WRX MY93-96	HT-051350
Subaru WRX MY97-98	HT-051352
Subaru WRX MY99-00	HT-051353
Toyota Celica GT-FOUR ST185 (3S-GTE)	HT-051360

Platinum Sport 2000 Plug'n'Play Adaptor Harnesses	Part Number
Ford Mustang 89-93 (V8 5.0L/5.8L)	HT-051470
Ford Mustang 94-95 (V8 5.0L/5.8L manual trans only)	HT-051471
Toyota Supra (JZA80/2JZ manual trans only)	HT-051460

Elite 1500 Plug'n'Play Adaptor Harnesses	Part Number
Yamaha WaveRunner (2008 onwards. 1.8L high output marine engine)	HT-150980
Yamaha WaveRunner Wideband Expansion Kit	HT-010730

TERMINATED ENGINE HARNESSES

Platinum Sport 1000 Terminated Engine Harness ECU kits

Part Number

Mazda 13B - Includes flying lead ignition harness.

Suits Square Bosch EV1 injector connectors..... HT-051202

Mazda 13B - Includes pre-wired LS1 ignition coil harness.

Suits Square Bosch EV1 injector connectors..... HT-051203

Mazda 13B - Includes pre-wired HPI4 15AMP 4CH Ignition Module with flying lead

ignition harness. Suits Square Bosch EV1 injector connectors. HT-051204

Platinum Sport 2000 Terminated Engine Harness ECU Kits

Part Number

Ford 89-95, 5.0. Suits Square Bosch EV1 injector connectors - Includes PS2000 ECU, Engine Harness and Fuse Block Kit. Full Sequential Injection..... HT-051476

Toyota 2JZ - Includes pre-wired HPI6 15AMP 6CH Ignition Module with factory coil

ignition harness. Suits Square Bosch EV1 injector connectors..... HT-051462

Toyota 2JZ - Includes pre-wired M&W Pro-16b 6-wire CDI with factory coil ignition

harness. Suits Square Bosch EV1 injector connectors. HT-051464

GM GEN III LS1 & LS6 Non DBW . Suits Square Bosch EV1 injector connectors.

Includes ECU, Engine Harness, & Fuse Block Kit. HT-051455

GM GEN III LS1 & LS6 Non DBW . Suits Square Bosch EV1 injector connectors.

Includes ECU, Engine Harness, & Fuse Block Kit. Pre-wired to connect directly to OEM 7 Pin Coil Harness Connector. HT-045657

GM GEN IV LS2 & LS3 Non DBW. Requires retrofit of cable operated throttle body.

Suits Square Bosch EV1 injector connectors. Includes ECU, Engine Harness, Fuse Block Kit. Pre-wired to connect to OEM 7 Pin Connector. HT-051457

GM GEN IV LS2 & LS3 Non DBW . Requires retrofit of cable operated throttle body.

Factory EV6 injector connectors. Includes ECU, Engine Harness, & Fuse Block Kit. Pre-wired to connect to OEM 7 Pin Connector. HT-051459

Elite 1500 Terminated Engine Harness ECU Kits

Part Number

Mitsubishi 4G63. Suits 1G CAS and Square Bosch EV1 injector connectors. Includes

ECU, Engine Harness with fuse block kit and flying lead ignition harness..... HT-150930

Mitsubishi 4G63 . Suits 2G CAS and Square Bosch EV1 injector connectors. Includes

ECU, Engine Harness with fuse block kit and flying lead ignition harness..... HT-150931

Mitsubishi 4G63 . Suits 1G CAS and Square Bosch EV1 injector connectors. Includes

ECU, Engine Harness with fuse block kit and pre-wired HPI4 15AMP 4CH Ignition Module and C.O.P. Ignition Harness. HT-150932

Mitsubishi 4G63. Suits 2G CAS and Square Bosch EV1 injector connectors. Includes

ECU, Engine Harness with fuse block kit and pre-wired HPI4 15AMP 4CH Ignition Module and C.O.P. Ignition Harness. HT-150933

Mitsubishi 4G63. Suits 1G CAS and Square Bosch EV1 injector connectors. Includes

ECU, Engine Harness with fuse block kit and pre-wired Power Select 4 CDI - Dual Power Output 115mJ/150mJ CDI and C.O.P. Ignition Harness..... HT-150934

Mitsubishi 4G63. Suits 2G CAS and Square Bosch EV1 injector connectors. Includes

ECU, Engine Harness with fuse block kit and pre-wired Power Select 4 CDI - Dual Power Output 115mJ/150mJ CDI and C.O.P. Ignition Harness..... HT-150935

Elite 2500 Terminated Engine Harness ECU Kits

Part Number

GM GEN IV LSx (LS2/LS3 etc) DBW Ready (suit factory EV6 injector connectors).

Includes ECU, Engine Harness, fuse block Kit. Pre-wired to connect to

OEM 7 Pin Connector. HT-151367

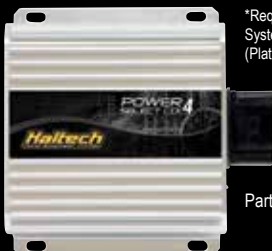
Ford Coyote 5.0L. Suits factory injector connectors and early style cam solenoid - small

single offset keyed connector. Supports DBW and Quad Cam Timing. Kit includes HPI8 15amp high power ignition module. (Requires modification for fitment to supercharged

Cobra Jet version)..... HT-151381

POWER SELECT 4 CDI

Dual Power Output 115mJ/150mJ. Can be used to convert to direct fire ignition on EVO 8MR & EVO 9 using a Haltech Pro Plug-in ECU. Selectable dual power output 115mJ/150mJ spark energy allows your ECU to automatically switch output power on the fly under high load conditions. Control 4 channels of direct fire ignition using only one ignition output. Re-use your unused ignition outputs to control other functions (Sport ECUs only).



*Requires Haltech IMS – (Ignition Multiplex System) single wire ignition trigger output. (Platinum Sport & Pro Plug-in ECUs Only)

Part No: HT-020203

POWER SELECT 6 CDI

Dual Power Output 115mJ/150mJ. Selectable dual power output 115mJ/150mJ spark energy allows your ECU to automatically switch output power on the fly under high load conditions. Control 6 channels of direct fire ignition using only one ignition output. Re-use your unused ignition outputs to control other functions (Sport ECUs only).



*Requires Haltech IMS – (Ignition Multiplex System) single wire ignition trigger output. (Platinum Sport & Pro Plug-in ECUs Only)

Part No: HT-020207

POWER SELECT 8 CDI

Dual Power Output 115mJ/150mJ. Can be used to convert to direct fire ignition on 8 cylinder engines using a Haltech Sport ECU. Selectable dual power output 115mJ/150mJ spark energy allows your ECU to automatically switch output power on the fly under high load conditions. Control 8 channels of direct fire ignition using only one ignition output. Re-use your unused ignition outputs to control other functions (Sport ECUs only).



*Requires Haltech IMS – (Ignition Multiplex System) single wire ignition trigger output. (Platinum Sport & Pro Plug-in ECUs Only)

Part No: HT-020211

IGNITION COILS



High Output IGBT
Inductive Coil
suit HPI modules
Part Number: HT-020112



High Output ICDI Coil
Part Number: HT-020132



LS1 Coil with built-in ignitor
Part No: HT-020100



Dual Post Coil
Part No: HT-020100



High Output IGBT
Inductive Coil with built-in ignitor
Part Number: HT-020114

OEM IGNITION MODULES

All modules include plugs, pins, mounting bracket and paste.

Dual Channel Igniter (DUMB): HT-020002

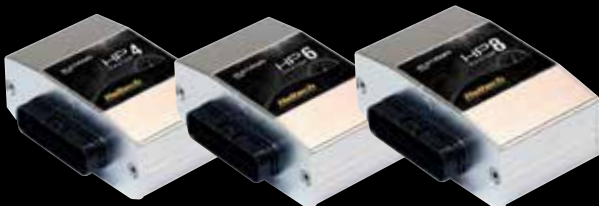
Triple Channel Igniter (DUMB): HT-020004

Quad Channel Igniter (DUMB): HT-020006



HP IGNITER

The Haltech High Power Igniter is capable of driving up to 15 Amps per channel, allowing ignition coils to reach their maximum coil energy. Available in 4, 6 and 8 channel packages, the HPI is an ideal upgrade for any transistor ignition system. When used in conjunction with a Haltech Platinum ECU, the HPI provides the perfect ignition system for any high performance engine.



CAN SYSTEM OVERVIEW

Good management is all about communication. Engine Management is no different. Haltech's IQ3 Dashes can communicate with Haltech (as well as many other brands) devices via a CAN network.

Need to connect more devices? Simply add Haltech CAN Hub!

The Haltech CAN system allows for simple and effective expansion in ECU capability and functionality without having to go to the trouble of wiring in a new ECU.

Expansion is made possible by the addition of multiple expansion devices that communicate to the main ECU via a Control Area Network (CAN).

Installation time and costs are kept to a minimum as all expansion devices are powered up from the main ECU via the pre-terminated connection cable that comes with each expansion device.

Each expansion device is pre-programmed with a unique ID code which allows it to be recognised on the network and work correctly first time every time.





SmartWire

HT06-500-KT-SW30

Solving the wiring complexity of a modern race car, the Racepak SmartWire is a fully programmable power control module. While traditional wiring provides control of vehicle electronic components through the routing of single, or multi-fuse, relay, and circuit breaker panels, the Racepak SmartWire functions as a central "command center" for all vehicle wiring.

The Racepak SmartWire unit is the electronic "starting point", with a direct main power connection from the vehicle battery to the SmartWire unit. Each output is user defined, both in function, current requirement and current limit via a USB connection to the user's PC. The design of the SmartWire unit will reduce overall installation weight / clutter, while contributing to a quicker reacting electronic system, through the solid state switching design.

SmartWire Kit *

30 output channels in total.
8 channels 20 amp max,
22 channels 10 amp max &
12 hardwired switch input channels. Kit includes SmartWire module, connector kit, software and USB programming cable.



SmartWire Switch Panel**

Optional Aluminium Switch Panel - 8 input channels via 7 rocker switches and 1 push button.

SmartWire Switch Module**

Optional Aluminium Switch Module - 16 input channels to integrate your existing switches via screw terminal block.

Simple plug-n-play connection

With an on-board CAN port, the Haltech Platinum Series ECUs provide both power and CAN communication to the Racepak IQ3 dash, allowing the user to monitor and log ECU channels as well as additional external Racepak V-Net sensors.



* Requires additional cabling and/or an external CAN Interface Module to read VNet Sensors and/or ECU information

**Requires additional cabling for connection.

DATA ACQUISITION

In conjunction with global data acquisition giant Racepak, Haltech has released the co-branded Haltech IQ3 display and logging dashes. These powerful, professional high-tech systems allow the user to sample and display both raw and calculated engine data that the Haltech ECU has on board.



Haltech IQ3 Display Dash
Part No: HT060100

Haltech IQ3 Display Dash

Haltech IQ3 display dash replaces all your gauges with one single digital display panel. Sourcing all its information directly from the Haltech ECU via a simple 2 wire CAN connection the Haltech IQ3 is the perfect data centre for any race enthusiast. The IQ3 display dash is fully user configurable in its display properties and warning lamp illumination - a must have for that serious racing look.



Haltech IQ3 Logger Dash
Part No: HT060101

Haltech IQ3 Logging Dash

The Haltech IQ3 dash represents an entirely new concept in data logging dashes. By placing the 32 channel data logger, 4GB memory card, GPS and 3 axis G meter inside the dash, every feature of the data system is now located in one central location. Combine 32 external channels of data with quick 2 wire CAN connection to a Haltech ECU and you have a virtually limitless amount of data available for collection and analysis. The Haltech IQ3 data logger dash is designed to be a complete data center. All data is stored in a 4GB Micro SD memory card, located in the front of the dash between the programmable shift lights. This design ensures easy access to the memory card for data download.

gaugeART CAN to VGA ADAPTER

The gaugeART Video Gauge Adapter allows real time monitoring of vehicle engines. The system interfaces with Haltech's ECU and produces a video signal which can then be displayed on a video monitor such as an in-car navigation system, aftermarket double DIN stereo or a separate LCD display.

The system is unique not only in its ability to display on any monitor with a video input available but also in its ability to allow you to completely customize the design of the gauges displayed.

An unlimited number of designs can be created, shared, and saved to the included microSD card using the included microSD adapter which is inserted in to the gaugeART Video Gauge Adapter.



Part No. HT-061000

I/O EXPANDER 12

The I/O Expander 12 instantly makes available 12 additional user configurable inputs and outputs. Simply plug in the CAN cable and start using your extra I/O.

Features:

- 4 x AVI – Analogue Voltage Inputs (0-5V)
- 4 x DPI – Digital Pulsed Inputs (0-5V – Max Freq 300Hz)
- 4 x DPO – Digital Pulsed Outputs (5V / 12V Pull ups – Max 1A)
- Broadcast rate of 20mS to the Haltech ECU for each channel.
- User definable "Safe State" for each output in case of loss of communications/error.
- Switchable pull up resistors on AVI channels for use with temperature sensors.
- Power and Status LEDs
- Powered by CAN bus. External power only required if DPOs are to be used.
- Multiple I/O Expander Boxes can be used on certain Haltech ECUs

Included in the Kit:

Haltech I/O Expander 12.
CAN direct connection cable
(600mm)

Please refer to the product specification sheet for full details of available functions for your ECU model.



Part No: HT059900

TC AMPLIFIER 2 & 4

The Thermocouple Amplifier Box instantly makes available multiple temperature inputs (K Type only) (0-1250 deg C) for monitoring, tuning and logging. Simply plug in the CAN cable and start using your thermocouple inputs. The Haltech Thermocouple Amplifier is available in a 2 Channel or 4 Channel Configuration

Features:

- Broadcast rate of 20mS to the Haltech ECU for each channel.
- +/- 2deg accuracy via CAN.
- Powered by CAN System when used with Haltech Platinum Series ECUs.
- Analogue Voltage Outputs (0.5 – 4.5V) for each channel.
- Multiple Thermocouple Amplifier Boxes can be used to add up to 12 Channels.
Refer to the product specification sheet for full details.

Included in the Kit:

Haltech Thermocouple Amplifier Box. CAN direct connection cable (600mm)



Part No: HT059920

Part No: HT059940

CAN HUB

The Haltech CAN Hub is a plug and play product which allows you to expand the functionality of your ECU by allowing the connection of multiple CAN based expansion devices.

Part No: HT059990

CAN HUB Mini HT059991

3 Port - for use with up to two CAN devices
(includes 1 x White 300mm/12" CAN cable)

CAN HUB HT059990

6 Port - for use with up to five CAN devices
(includes 4 x White 300mm/12" CAN cables)



Part No: HT059991

CAN WIDEBAND

The Haltech CAN Wideband Controller allows the user to accurately measure air/fuel ratios over a wide range from rich to lean via the Haltech CAN system for precise engine tuning. Available in single and dual channel.

Included in the Kit:

- Haltech CAN Wideband Controller
- Wiring harness
- CAN Connection Cable (600mm)
- Wideband Sensor – Bosch LSU 4.2
- Weldable fitting bungs and blanking plugs
- Quick Start Guide

Part No: HT059970



Part No: HT059980

ECU OUTPUT DEVICES

Haltech can control an array of outputs devices, offering complete solutions and maximum flexibility for your installation.



Injector ballast resistor pack



Boost control solenoid



Idle air control motor



Device Emulator 8:

Provides the OEM ECU emulated signals to stop fault codes in "piggy back" style installations.

ECU INPUT SENSORS

Haltech can interface with most OEM and aftermarket sensors, offering complete solutions and maximum flexibility for your installation.

Flex Fuel Sensor

A Flex Fuel Sensor is a device that measures the ethanol content in the car's fuel system.

The sensor is installed between the fuel pressure regulator and the fuel tank, where it monitors the ethanol content of the fuel returning to the tank.

That information is then passed onto the Haltech ECU which applies fuel, ignition and boost corrections to make the best power for the ethanol content available.

The Haltech Flex Fuel Sensor allows the driver to add any mixture of ethanol/petrol (from 0-100% ethanol content) without the need to swap tunes or use a laptop.



Methanol Wideband Kit

DR Adaptor 2:

Converts retractor signals into ECU compatible digital signals.



Hall Effect Sensors

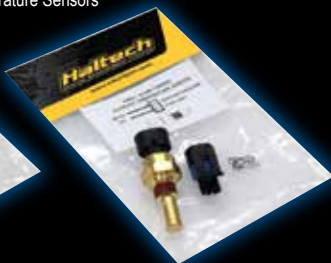


ECU INPUT SENSORS

Air Temperature Sensors



Coolant Temperature Sensors



MAP Sensors



Oil/Fuel Pressure Sensors



Throttle Position Sensors



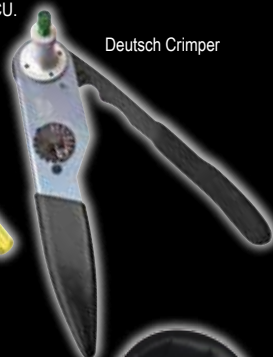
TOOLS & DIAGNOSTICS

Haltech can supply a range of equipment to assist in the installation and tuning of your ECU.

Dual Crimper Set



Deutsch Crimper



Pro Tuner
Two Channel
Knock Box Kit



Two Channel
USB Scope Kit



Haltech
ENGINE MANAGEMENT SYSTEMS