

正面

120mm

momcozy

Wearable Breast Pump

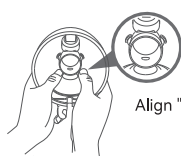
Installation guidelines (please refer to the user manual for further details)

*Make sure your hands are clean before installation.

1. Connect the diaphragm and valve to the linker.

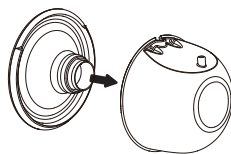


2. Connect the assembled linker to the milk collector.

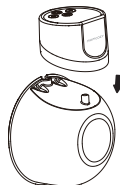


Align "ear" with groove

3. Connect the flange to the milk collector.

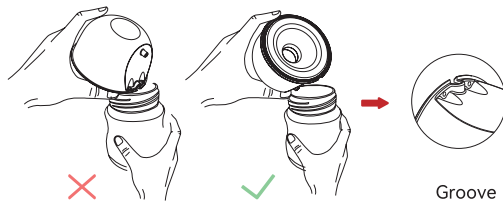


4. Assemble the pump and milk collector.

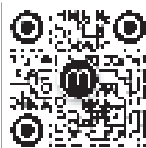


Pouring milk

Hold the breast milk collector in the correct direction when pouring milk.



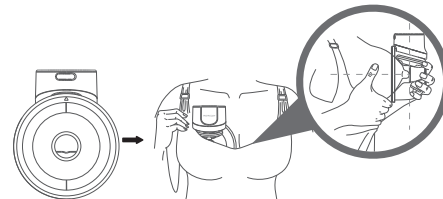
Please refer to the troubleshooting video for further solutions, if any product problems occur during the installation or your pumping session. Access to the troubleshooting video, scan the QR code.



反面

How to prevent milk leakage & Pumping tips for more breast milk

1. Bend forward to make sure your nipple is centered in the flange tunnel. The breast pump should be firmly against your breast.



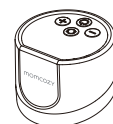
2. We recommend users wear a full coverage nursing bra to form a tight seal between their breasts and flange.

3. Make sure the pump is well assembled.

4. When pumping, sit or stand up straight, not lying down.

Cleaning & Sterilization

***Non-washable parts:**



Pump Motor

***Washable parts:**



Milk Collector



Flange



Diaphragm



Linker



Valve

We recommend using soapy water (40-60°C) to clean washable parts for 3-5 minutes.

Please use boiling water / steam / sterilization pot for sterilization, with temperature not exceeding 100 °C (212 °F). Boil and sterilize the parts within 5-10 minutes.

*It's not recommended to sterilize your breast pump accessories in a microwave, which will shorten the life of the accessories.

Tips:

- The expected service life of the washable parts is 1-3 months. It is recommended to replace the washable parts after long-term storage or before pumping for your next child.
- The breast pump will shut off automatically after pumping for 30 minutes. If irritation or discomfort occurs, discontinue use and see a healthcare provider.

If you have any questions, please contact us by email.
support@momcozy.com