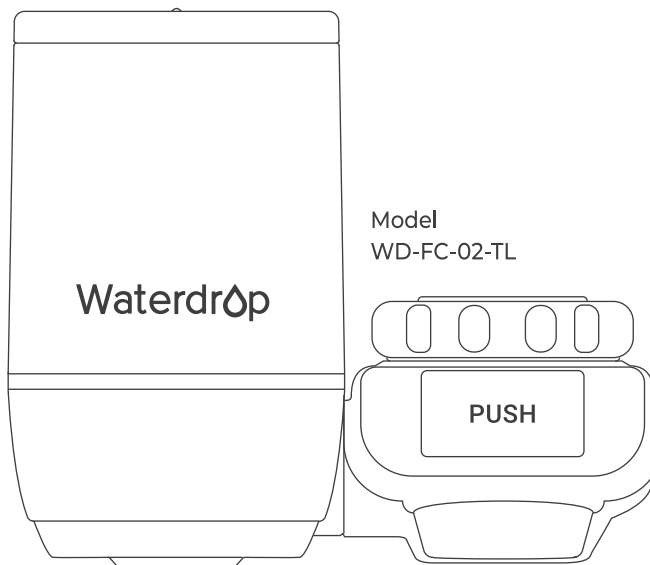




Alkaline Faucet Filtration System

OWNER'S MANUAL



About the System

Thank you for choosing the Waterdrop Alkaline Faucet Filtration System. This filtration system utilizes advanced alkaline mineralization technology, featuring a high-precision composite filter cartridge made of activated carbon block and PP cotton. It provides you with clean and healthy water by improving taste and effectively removing harmful substances such as chlorine, discoloration, odors, sediment, rust, suspended particles, and colloids. At the same time, it adds beneficial minerals to the water, increases the pH level, and perfectly meets your needs for clean and healthy water.

System Specifications

To achieve optimal performance, it is recommended to use the system within the system specifications.

System Model No.	WD-FC-02-TL
------------------	-------------

Replacement Model No.	WD-FF-05
-----------------------	----------

Rated Capacity	3 months or 320 gallons
----------------	-------------------------

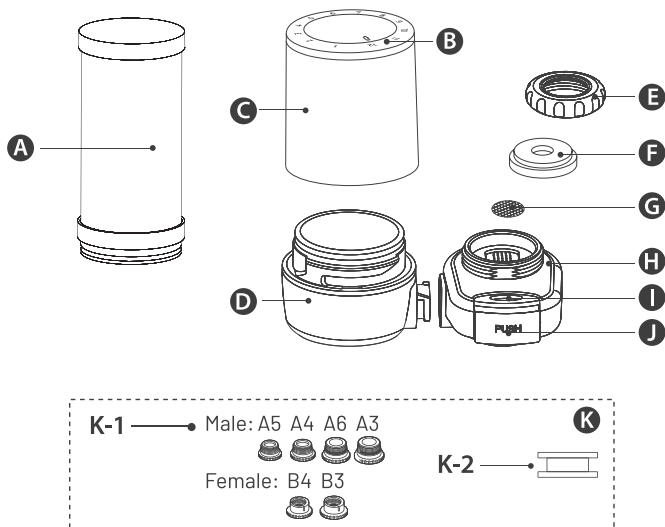
Rated Flow	0.5 gpm/1.89 lpm
------------	------------------

Operating Temperature	41-100 ° F/5-38 ° C
-----------------------	---------------------

Operating Working Pressure	15-100 psi/100-689 kPa
----------------------------	------------------------

NOTE: Do not use with water that is microbiologically unsafe or of unknown quality without adequate disinfection before or after the system.

Parts List



(A) Alkaline Activated Carbon Block Filter

(B) Mechanical Life Reminder Device

(C) Filter Top Cover

(D) Filter Base

(E) Mounting Nut

(F) Silicone Washer

(G) Steel Mesh

(H) Mounting Base

(I) Display Area

(J) PUSH Button

(K) Accessories

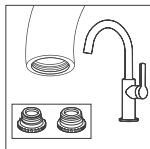
(K-1) 6x Adapter

M18.5(A5), 13/16"(A4), M21.5(A6),
15/16"(A3), M18.5(B4), 55/64"(B3)

(K-2) 1x Teflon Tape

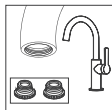
Note: When the display area is set to "PURE," the faucet provides filtered purified water; when it is set to "TAP," the faucet supplies unfiltered tap water.

Installation Instructions



Step 1

Remove your original faucet aerator if there is an aerator in your faucet. Choose the right adapter to match your faucet threading.

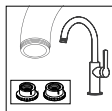


How to Choose the Right Adapter

Male: A5 A4 A6 A3



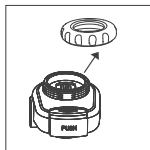
For internal threaded faucets,
choose from A5, A4, A6 or A3.



Female: B4 B3

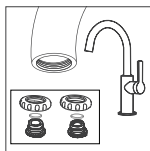


For external threaded faucets,
choose B4 or B3.



Step 2

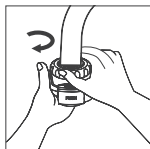
Unscrew the Mounting Nut (E) from the Mounting Base (H) by turning counter-clockwise. Then put the Mounting Nut (E) on faucet.



Step 3

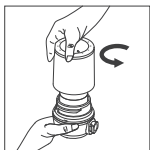
Wrap Teflon Tape (K-2) around the joint of mounting base and the faucet. You can hand-tighten the adapter and do not over-tighten it.

NOTE: The silicone washers have been installed into the adapters, and be careful not to omit the washer during the installation. Otherwise, this may cause water leakage.



Step 4

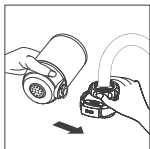
Screw the Mounting Base (H) onto the Mounting Nut (E) firmly by turning clockwise.



Step 5

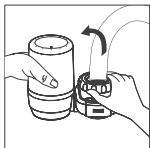
Unscrew the Filter Top Cover (C) from the Filter Base (D). Take out the filter from package and remove the protective film. Insert the filter into Filter Base (D). Twist the Filter Top Cover (C) back to Filter Base (D) securely.

NOTE: Please insert the filter firmly until it sits.



Step 6

Align the slot of Filter Base (D) with the slot of Mounting Base (H).



Step 7

Insert the Filter Base (D) into the Mounting Base (H) and rotate 90° upward.

How to Use

After installation, open faucet. Press the "PUSH" button to "pure" position, and the filtered water will run through. Press the "PUSH" button to "tap" position, and unfiltered water will run through.

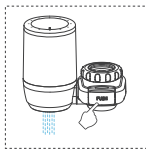
NOTE:

1. Before first use, run tap water for 1 minute in "pure" position. Do not run hot water above 100°F/38°C through the filter. During flush, it is normal to see cloudy water and hear the sound of water pushing air out of the filter.
2. Check for leaks. If there is any leak, please refer to FAQ or contact customer service staff.
3. Filter Replacement For optimum performance, it is highly recommended you use genuine Waterdrop faucet replacement water filter. And it is also advisable to change your filter every 3 months or 320 gallons to keep water fresh, whichever comes first. This will vary based on water usage and water quality.
4. The faucet head comes with Mechanical Life Reminder Device that you can twist to align the scale with the month of use, making it convenient to keep track of when you started using it so that you can replace the filter on time.

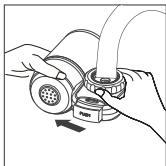
Tap Water



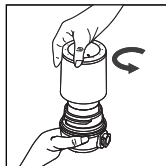
Pure Water



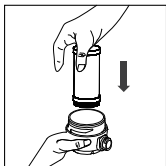
Filter Replacement



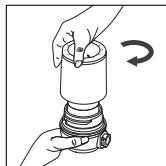
1. Twist the Filter Base (D) from the Mounting Base (H).



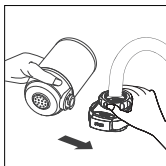
2. Twist the Filter Top Cover (C) off and take out the old filter.



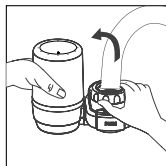
3. Remove the protective film and insert the new filter into the Filter Base (D).



4. Twist the Filter Top Cover (C) on.



5. Align the slot of Filter Base (D).



6. Insert Filter Base (D) into Mounting with the slot of Mounting Base (H). Base (H) and rotate 90° upward

Warnings

1. Do not use with water temperatures exceeding 100°F (38°C).
2. Flush the system for 1 minute before use if it has been unused for an extended period.
3. Before each use, run water through the filter for 5 to 10 seconds to activate it.
4. The filter system must be protected from freezing temperatures, frost, snow, sleet, and ice. Exposure to these elements may cause cracks or product failure.
5. Do not touch the filtered water outlet to prevent bacterial contamination.
6. Do not use a steel wire brush or corrosive liquids to clean the product.
7. Replace the filter every 3 months or after filtering 320 gallons to maintain optimal performance.

Frequently Asked Questions

Q: Why does water leak between the mounting base and the faucet?

A: Please check if the Teflon Tape is wrapped properly. If not, bind the tape again around the joint of mounting base and the faucet. If there is still water leakage, check whether the silicone washer is installed. Make sure that the silicone washer is installed in place.

Q: Why does the filtered water run quite slowly?

A: The filter may be clogged. Replace the filter.

Q: Why does the unfiltered water run quite slowly?

A: There may be dirt in filter steel mesh. Clean the filter steel mesh.

Q: Why does the water taste funny?

A: The filter is not installed appropriately, or it should be replaced. Please reinstall it in a correct way. If there is still bad taste, please replace it.

Q: Why hasn't the TDS value of the water decreased after filtration?

A: The Waterdrop Alkaline Faucet Filtration System uses an alkaline composite activated carbon block filter. While it effectively removes harmful substances from water, it also adds beneficial minerals that are good for your health. These added minerals may result in a higher TDS value after filtration, but this does not indicate a lack of filtration effectiveness. If you require a filtration system that reduces TDS, we recommend the Waterdrop Reverse Osmosis System.

Limited Warranty

The Waterdrop Alkaline Filter Faucet Filtration System (Model No.:WD-FC-02-TL) offers 1-year warranty, which covers defects in materials and workmanship from original date of purchase.

If the product proves to be defective within 1 year from the date of purchase, please call our technical support hotline.

During the warranty period, we will replace or repair any part which is deemed to be defective, if product has not been subjected to tampering, alteration or improper use after delivery, and has not been repaired by the manufacturer. The product is not warranted against misuse, use in abnormal operation temperature conditions, conditions outside listed operating parameter, use in commercial operations or any other manner outside the "System Specifications" set forth in the user manual.

Our obligation does not include the cost of transportation. We are not responsible for damage in transit, and claims for such damage should be presented to the carrier by the customer.

NOTE: It does NOT apply to any filters, which has a life expectancy that varies based on incoming water quality.

Qingdao Ecopure Filter Co., Ltd.

Tel: 1-888-352-3558 (U.S.)

E-mail: CT@waterdropfilter.com

Add.: No.13, Yishengbai Road, Jimo, Qingdao, China



Made in China P001