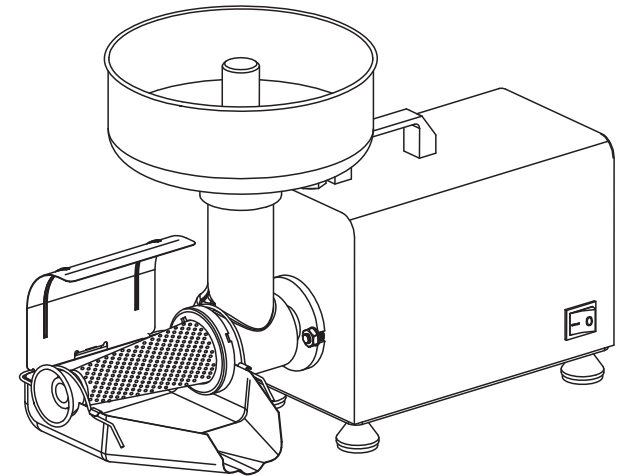


# VEVOR®

## TOMATO SAUCE MAKER ETC-1C



**This is the original instruction, please read all manual instructions carefully before operating.**

**VEVOR reserves clear interpretation of our user manual.**

**The appearance of the product shall be subject to the product you received. Please forgive us that we won't inform you again if there is any technology or software updates on our product.**

**EU Importer:WAITCHX**  
**Address: 250 bis boulevard Saint-Germain 75007 Paris**  
**UK importer:FREE MOOD LTD**  
**Address: 2 Holywell Lane, London, England, EC2A 3ET**

**Manufacture:ZHEJIANG YANGMEI INDUSTRY AND TRADE CO.,LTD**  
**Address:Shentang industrial area,Wuyi country,Jinhua city,Zhejiang, China**



EUREP GmbH  
Unterlettenweg 1a,85051  
Ingolstadt,Germany



Acumen IBC Ltd  
Ground Floor, 94 Ock Street,  
Abingdon, OX14 5DH



## Technical Specifications

Style	TOMATO SAUCE MAKER
Nominal power, HP	370W
Gearing	2 - speed gearbox
Dimensions WxHxD, cm	490 x 230 x 345
Rated voltage	120V/220V-240V~50/60Hz
Gross weight, kg	ETC-1: 9.0KG; ETC-1C: 10.6KG

## Safety notices

- Please read these instructions carefully and use the device only for food processing.
- Persons with physical, sensory or mental abilities may not use the device unless they are supervised and instructed by a person responsible for your safety.
- Only place the unit out of the reach of children.
- To prevent hair, clothing or chains from getting into the moving parts, do not wear jewelry or tie long hair together while working. Always work in a concentrated manner.
- Keep all parts of the unit and accessories clean as they come into contact with food. Thoroughly clean all parts of the unit before each use.
- Do not use solvents, benzene or alcohol to clean the unit.
- Please note the maximum operating time (without interruption) of 15 minutes. Allow the unit to cool down for 5 minutes before further use.

## Intended use

### IMPORTANT:

**! If you forget to turn off the unit before unplugging the power cord, wait at least 10 seconds before restoring power.**

**! Never leave the unit unattended when the power plug is plugged in.** Always unplug the power cord if you do not use the unit, move the unit, remove individual components or clean the unit.

## Cleaning and care instructions

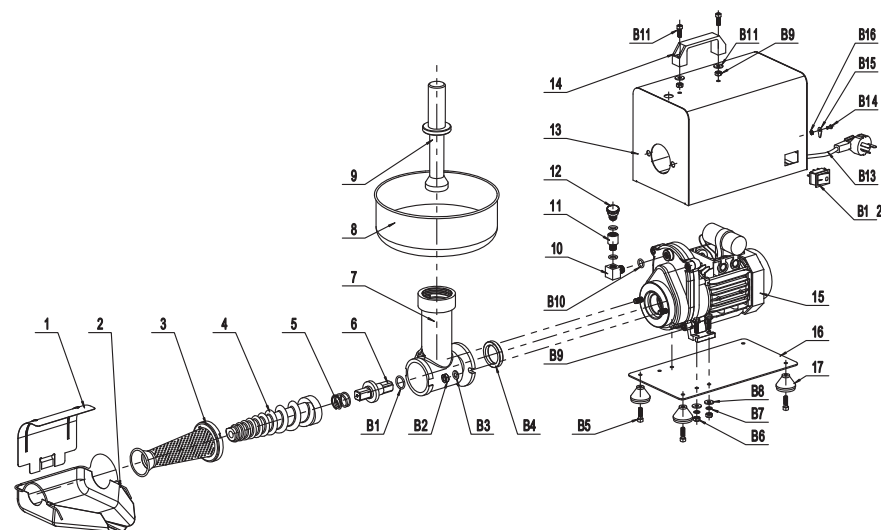
The machine must be thoroughly cleaned before first use. Pay particular attention to cleaning the parts that come into direct contact with food.

After use, the machine must be thoroughly cleaned to prevent the formation of bacteria.

We recommend that the gears, gasket and cylinder interior are lightly moistened with cooking oil after each cleaning.

**Always disconnect the mains plug before cleaning.**

## ETC-1C PART LIST



NO.	DES.	QTY	NO.	DES.	QTY
1	Trough Brace	1	B1	O Ring	1
2	Trough	1	B2	Hex Nut M8	2
3	Filter	1	B3	Flat Washer 8	2
4	Screw Feeder	1	B4	Oil Seal	1
5	Drive Spring	1	B5	Hexagon Screw	4
6	Drive Shaft	1	B6	Hex Nut M6	4
7	Body	1	B7	Standard Spring Washer	4
8	Funnel	1	B8	Flat Washer 6	6
9	Pestle	1	B9	Hexagon Bolt with Flange	4
10	Conector1	1	B10	O Ring	3
11	Conector2	1	B11	Hexagon Screw	6
12	Oil Hole Bolt	1	B12	Switch	1
13	Motor Cover	1	B13	Power Line	1
14	Square Handle	1	B14	Hexagon Screw M14×10	1
15	Gearbox Assembly	1	B15	Card	1
16	Bottom Panel	1	B16	Hex Nut M4	1
17	Rubber Feet	4			