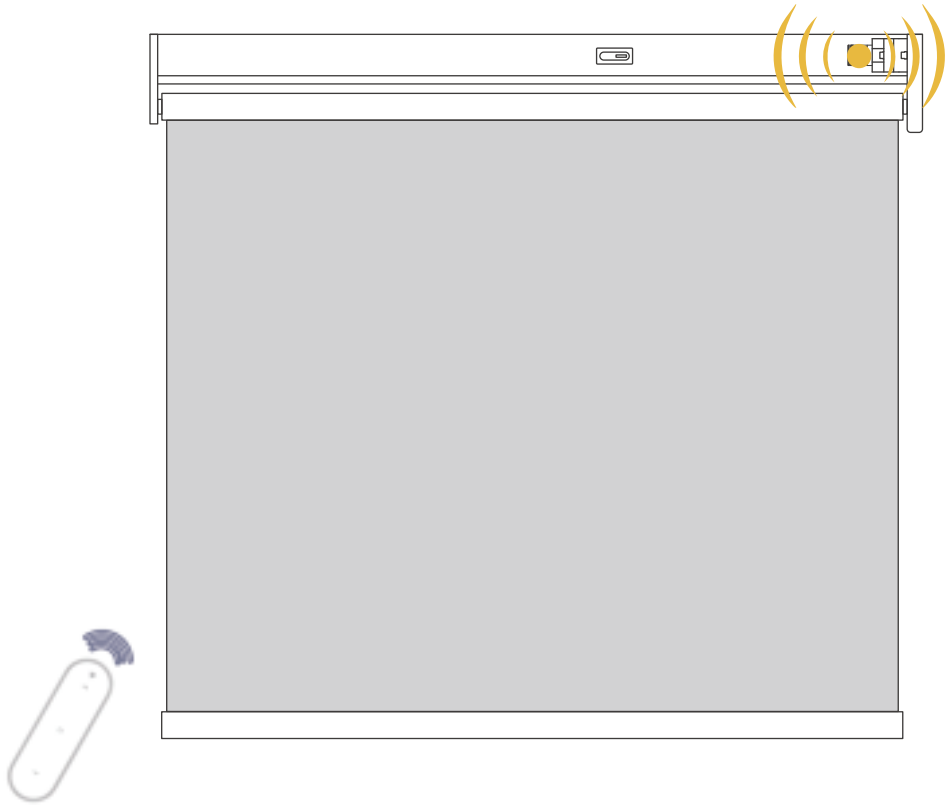


Motorized Roller Blinds Series

Installation Instructions



Advanced Settings



"admin" mode

Emitter channel shows slow flash

1.Motor rotation direction adjustment
The running direction of the blinds is opposite to that of the emitter button, performing this operation.

2.Delete emitter matches
(1) The switch selects "admin" mode
(2) Press "S" 5 times, motor rotates once. The match is deleted.



"user" mode

In user mode,you can operate and use this product normally without worrying about any misoperation with the motor.

Add a new emitter

A motor can match one or more emitters
Emitters need to be matched. See "emitter quick matching"

There's a quick way to copy it

(1) The switch selects "user" mode.
(2) Operate matched emitter.(Select the channel you want to copy.)
Press"S" once, motor rotates once.
Press"S" once again, motor rotates once.
(3) Operate emitter to be added.(Select the channel you want to add)
Press"S" once, motor rotates once.
Copy complete. Repeat 1-2, delete emitter.



Method 1

Press both together until the motor rotates once



Method 2

Press the "M" key 10"
Motor turns three times



Motor"M"Key

Operation	The motor feedback	Function
Repeated short press	Rotate-Stop , Reverse rotation-Stop , Cycle rotation	Emergency switch
Press for 2"	Motor rotates once	The motor enters the matching state
Press for 5"	Motor rotates twice	/
Press for 10"	Motor rotates three times	Motor reversing
Press for 15"	Motor rotates four times	Reset



Motor Indicator Light

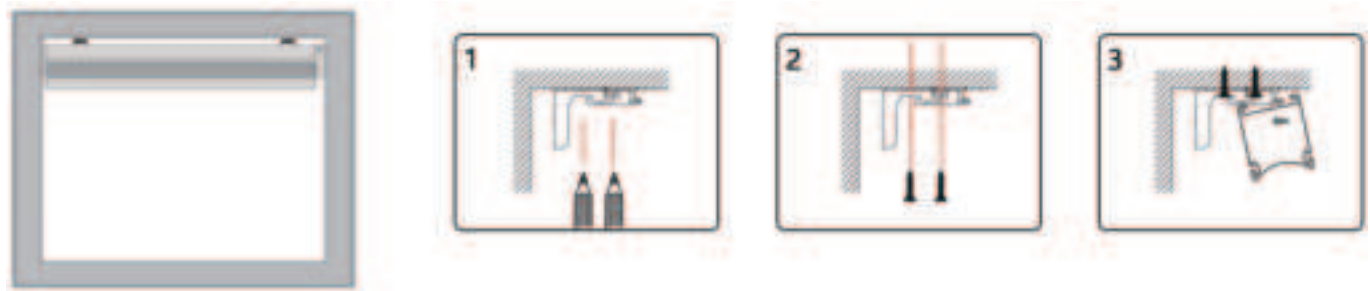
Indicator Status	Reason
Slow Flash	Low battery warning

Details of Parts Included in Package

A 1 x Motorized Shade	B 2 × Brackets	C 4 x Screws	D 1 x Emitter
------------------------------	-----------------------	---------------------	----------------------

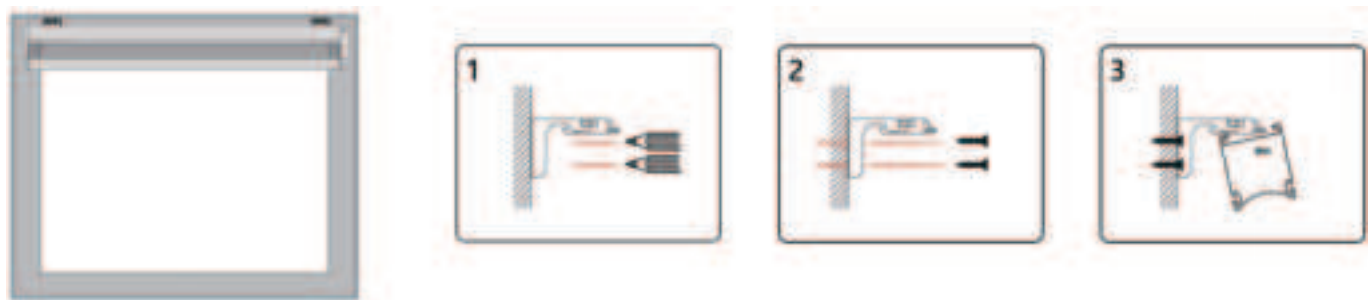
How to install

Inside Mount



1.Decide on and mark the position of the two brackets with a pencil, using pencil marks as a guide, start the screw hole by drilling.
2.Install the two brackets to the window frame with screws or the inner wall.
3.Hook the headrail of the shade into the front of the bracket. Rotate the headrail until the back of it securely snaps into place. (When you hear "Click")

Outside Mount



- 1.Decide on and mark the position of the two brackets with a pencil, using pencil marks as a guide, start the screw hole by drilling (wood and plasterboard and concrete surfaces only); There are two mounting holes on each bracket. It can be installed with one screw. If you want to install it more firmly, you can also install two screws.
- 2.Install the two brackets to the window frame with screws or the outer wall.
- 3.Hook the headrail of the shade into the front of the bracket. Rotate the headrail until the back of it securely snaps into place. (When you hear "Click")

Install the battery

Battery Version

1. Roll up the blinds, lay it flat on the table.

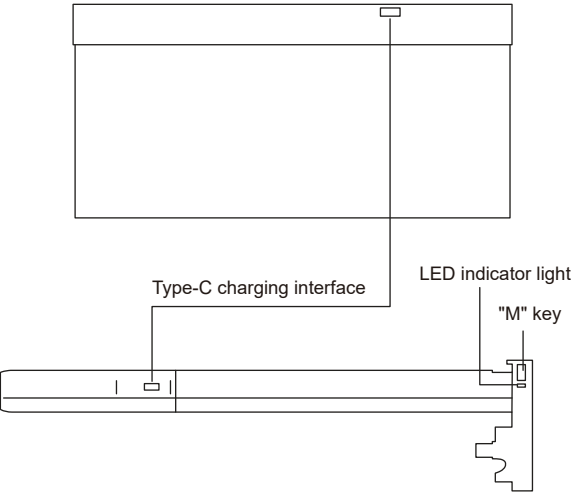
2. Remove the top screw, pull out the battery box. (Be careful, not to pull it hard to prevent the power cord connector from loosening.)

3. According to the battery box tips, correctly install 6 AA dry batteries.

4. Install the battery box into the upbeat and install the blinds.

Built-in Lithium Battery

Rechargeable Version type ① (Width<=47" & Height<=78 1/2")



This motor is equipped with built-in lithium batteries and does not require external power supply.

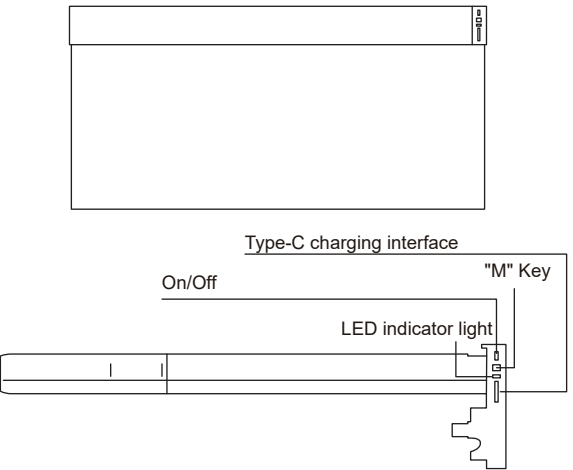
Before using the motor for the first time, please fully charge the motor once. During the process of charging, the LED charging light on the motor flashes red.

When the batteries are fully charged, the LED will turn pure red and the motor is ready for use.

Use the separately available cable (Type-C port at one end, USB port at one end) with three meters long. Connect the cable to the Type-C port on the motor.

You can change the motor with any commercially available Type-C power supply.

Rechargeable Version type ② (Width>47" OR Height>78 1/2")



This motor is equipped with built-in lithium batteries and does not require external power supply.

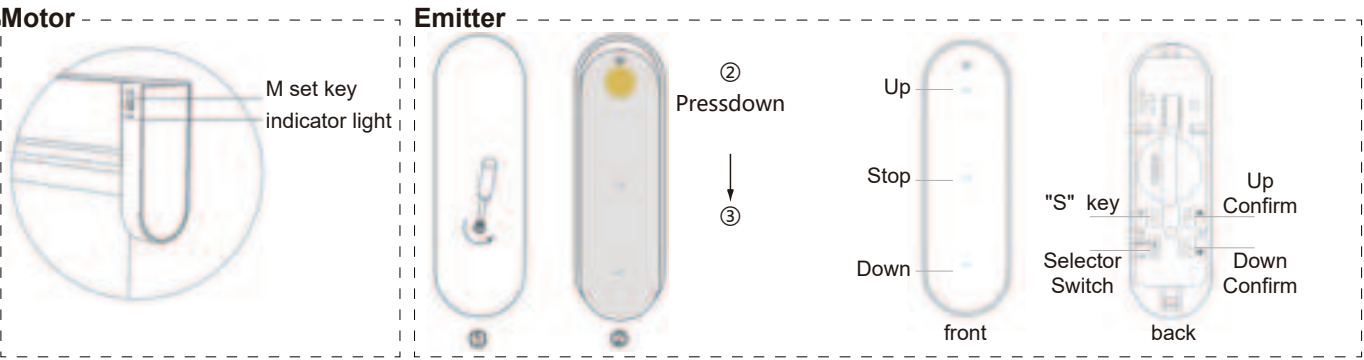
Before using the motor for the first time, please fully charge the motor once. During the process of charging, the LED charging light on the motor flashes red.

When the batteries are fully charged, the LED will turn pure red and the motor is ready for use.

Use the separately available cable (Type-C port at one end, USB port at one end) with three meters long. Connect the cable to the Type-C port on the motor.

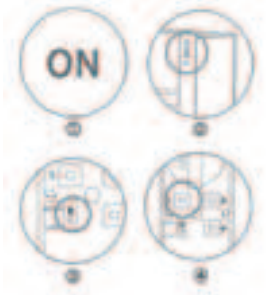
You can change the motor with any commercially available Type-C power supply.

Function Key Description



Quick Matching

- STEP 1: (1) Battery Version-Install the dry battery OR (2) Rechargeable Version-Make sure the motor is energized
- STEP 2: Press the motor "M" button for 2", the motor rotates back and forth once. The motor enters the matching state, (Valid for 60 seconds)
- STEP 3: The switch selects "admin" mode
- STEP 4: Long press "S" for 2" The motor will rotate back and forth once. Match successfully
- The running direction of the blinds is opposite to that of the emitter button. Refer to "motor reversing"



"admin" mode

- STEP 1: Set Highest Point
- Use the button on the front to adjust the shade to the position you want. Press [Up] for 2 seconds, the motor rotates once. This position is set as the highest point.
- STEP 2: Set Lowest Point
- Use the button on the front to adjust the shade to the position you want. Press [Down] for 2 seconds, the motor rotates once. Then this position is set as the lowest point.
- In Admin mode, you can switch between inching operation and continuous operation, to adjust it more accurately . Press once, the shades will be in inching operation. Press 2 times, the shades will be in continuous operation.



NOTICE

Thank you for purchasing our products.

Please read the installation instructions carefully to familiarize yourself with safe and effective usage before use. In addition, keep the installation instructions handy when using the product.

The brackets and screws apply to the wooden window frames, plasterboard walls and concrete walls, but they cannot be installed onto the window frames or ceiling which is not made up of wood, plasterboard and concrete.

Please check the materials and hardness of the window frames or ceiling before installation.

Make sure to comply with the number of brackets and installation location required in the installation instructions when installing the products. Improper installation could cause the shades to drop and bring damage to health or property.

Please do not hang any items on the product or pull the product roughly or fiercely.

The product is only suitable for indoor use and not for outdoor use.

Please do not use the product in a high heat or humid environment (such as saunas or furnace), or near an open flame.

Please close the window or push the shades up during high winds, otherwise the strong winds could cause the damage to the product or an accident.

Please do not place any items which can interfere with operating the shades within a range of moving up and down.

Please feel free to email us if you have any questions : collab@grandekorshop.com