

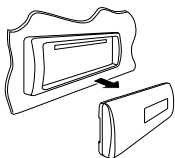
# JVC

ENGLISH

ไทย

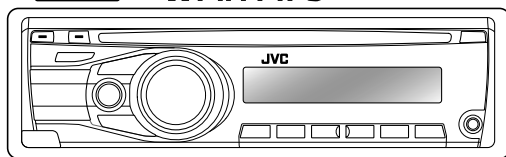
## KD-R326/KD-R325

CD RECEIVER / เครื่องเล่น CD



COMPACT  
disc  
DIGITAL AUDIO  
TEXT

WMA MP3



For canceling the display demonstration, see page 4. / ดูที่หน้า 4 เพื่อยกเลิกการสาธิตภาพประกอบ

For installation and connections, refer to the separate manual.

กรุณาดูคู่มือที่แยกต่างหาก ในการติดตั้งและการเชื่อมต่อ

## INSTRUCTIONS คำแนะนำ

GET0675-001A  
[U/UH]

Get other manuals <https://www.bkmanuals.com>

Thank you for purchasing a JVC product.

Please read all instructions carefully before operation, to ensure your complete understanding and to obtain the best possible performance from the unit.

## **IMPORTANT FOR LASER PRODUCTS**

### **1. CLASS 1 LASER PRODUCT**

**2. CAUTION:** Do not open the top cover. There are no user serviceable parts inside the unit; leave all servicing to qualified service personnel.

**3. CAUTION:** Visible and/or invisible class 1M laser radiation when open. Do not view directly with optical instruments.

### **4. REPRODUCTION OF LABEL: CAUTION LABEL, PLACED OUTSIDE THE UNIT.**

<b>CAUTION</b> VISIBLE AND/OR INVISIBLE CLASS 1M LASER RADIATION WHEN OPEN. DO NOT VIEW DIRECTLY WITH OPTICAL INSTRUMENTS. IEC00025-1:2001 (ENG)	<b>ATTENTION</b> RAYONNEMENT LASER VISIBLE ET/OU INVISIBLE DE CLASSE 1M UNE FOIS OUVERT, NE PAS REGARDER DIRECTEMENT AVEC DES INSTRUMENTS OPTIQUES. (FRA)	<b>AVISO</b> RADIACION LASER DE CLASE 1M VISIBLE Y/O INVISIBLE CUANDO ESTA ABIERTO. NO MIRAR DIRECTAMENTE CON INSTRUMENTAL OPTICO. (ESP)	<b>VARNING</b> SYNLIG OCH/ELLER OSYNLIG LASERSTRÅLNING, KLASS 1M, NÄR DENNA DEL ÄR ÖPPNAD. BETRÄKTA EJ STRÅLEN MED OPTISKA INSTRUMENT. (SWE)	<b>注意</b> ここを開くと可視 及び/または不可視 のクラス1M レーザー放射が 出ます。 光学観望で直接 見ないでください。 (JPN)	<b>CAUTION</b> VISIBLE AND/OR INVISIBLE CLASS II LASER RADIATION WHEN OPEN. DO NOT STARE INTO BEAM. FDA 21 CFR (ENG)
--	---	--	--	--	--



[European Union only]

## **WARNING:**

Stop the car before operating the unit.

## **Caution:**

Adjust the volume so that you can hear sounds outside the car. Driving with the volume too high may cause an accident.

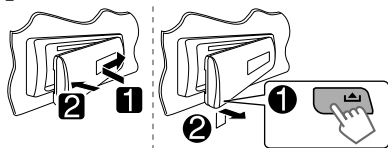
## **Caution on volume setting:**

Discs produce very little noise compared with other sources. Lower the volume before playing a disc to avoid damaging the speakers by the sudden increase of the output level.

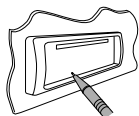
## **Caution for DualDisc playback:**

The Non-DVD side of a "DualDisc" does not comply with the "Compact Disc Digital Audio" standard. Therefore, the use of Non-DVD side of a DualDisc on this product may not be recommended.

## How to attach/detach the control panel



## How to reset your unit



Your preset adjustments will also be erased.

## How to forcibly eject a disc



- Be careful not to drop the disc when it ejects.
- If this does not work, reset your unit.

## Maintenance

### Cleaning the unit

Wipe off the dirt on the panel with a dry silicon or soft cloth. Failure to observe this precaution may result in damage to the monitor or unit.

### Cleaning the connector

Wipe off dirt on the connector of the unit and panel. Use a cotton swab or cloth.

## CONTENTS

- 3 How to attach/detach the control panel
- 3 How to reset your unit
- 3 How to forcibly eject a disc
- 3 Maintenance
- 4 **Canceling the display demonstration**
- 4 **Setting the clock**
- 5 **Preparing the remote controller**
- 5 **About discs**
- 6 **Basic operations**
- 7 **Listening to the radio**
- 8 **Listening to a disc**
- 9 **Connecting the other external components**
- 9 **Listening to the other external components**
- 10 **Selecting a preset sound mode**
- 10 **Menu operations**
- 13 **Troubleshooting**
- 14 **Using Bluetooth® devices**
- 15 **Specifications**

**Condensation :** When the car is air-conditioned, moisture may collect on the laser lens. This may cause disc read errors. In this case, remove the disc and wait for the moisture to evaporate.

**Temperature inside the car :** If you have parked the car for a long time in hot or cold weather, wait until the temperature in the car becomes normal before operating the unit.

# Canceling the display demonstration

Display demonstration will be activated automatically if no operation is done for about 20 seconds.

## 1 Turn on the power.



## 2 MENU [Hold]



## 4 Select <DEMO OFF>.



## 6 Finish the procedure.



# Setting the clock

## 1 Turn on the power.



## 2 MENU [Hold]



## 3 Select <CLOCK>.



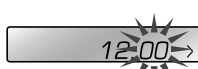
## 4 Select <CLOCK SET>.



## 5 Adjust the hour.



## 6 Adjust the minute.



## 7 Finish the procedure.



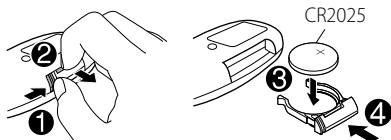
# Preparing the remote controller

When you use the remote controller for the first time, pull out the insulation sheet.



If the effectiveness of the remote controller decreases, replace the battery.

## Replacing the lithium coin battery



## Caution:

- Danger of explosion if battery is incorrectly replaced. Replace only with the same or equivalent type.
- Battery shall not be exposed to excessive heat such as sunshine, fire, or the like.

## Warning (to prevent accidents and damage):

- Do not install any battery other than CR2025 or its equivalent.
- Do not leave the remote controller in a place (such as dashboards) exposed to direct sunlight for a long time.
- Store the battery in a place where children cannot reach.
- Do not recharge, short, disassemble, heat the battery, or dispose of it in a fire.
- Do not leave the battery with other metallic materials.
- Do not poke the battery with tweezers or similar tools.
- Wrap the battery with tape and insulate when throwing away or saving it.

# About discs

This unit can only play the CDs with:



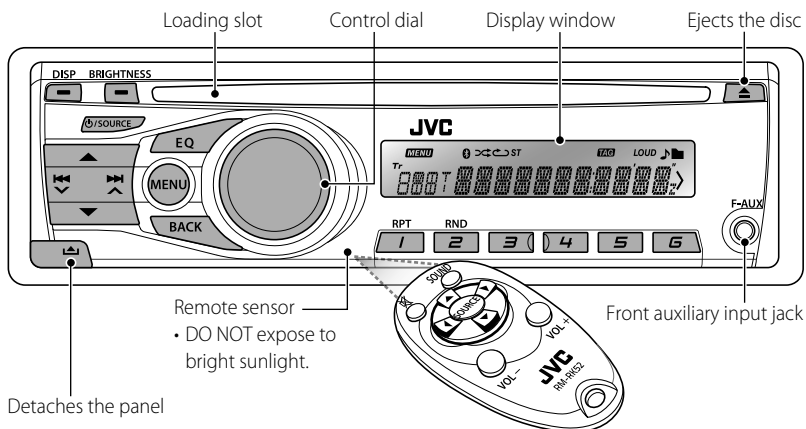
## Discs that cannot be used:

- Discs that are not round.
- Discs with coloring on the recording surface or discs that are dirty.
- You cannot play a Recordable/ReWritable disc that has not been finalized. (For the finalization process refer to your disc writing software, and your disc recorder instruction manual.)
- 3-inch CD cannot be used. Attempt to insert using an adapter can cause malfunction.

## Handling discs:

- Do not touch the recording surface of the disc.
- Do not stick tape etc. on the disc, or use a disc with tape stuck on it.
- Do not use any accessories for the disc.
- Clean from the center of the disc and move outward.
- Clean the disc with a dry silicon or soft cloth. Do not use any solvents.
- When removing discs from this unit, pull them out horizontally.
- Remove the rims from the center hole and disc edge before inserting a disc.

# Basic operations



When you press or hold the following button(s)...

Main unit	Remote controller	General operation
<b>⏻ / SOURCE</b>	—	<ul style="list-style-type: none"> <li>Turns on.</li> <li>Turns off [Hold].</li> </ul>
	<b>SOURCE</b>	Selects the sources (FM, CD, F-AUX, BT AUDIO or R-AUX or BT PHONE, AM). • "CD" is selectable only when a disc is loaded.
Control dial (turn)	<b>VOL - / +</b>	Adjusts the volume level.
	—	Selects items.
Control dial (press)		Mutes the sound during playback. If the source is "CD," playback pauses. • Press the button again to cancel muting or resume playback.
	—	Confirms selection.
<b>EQ</b>	<b>SOUND</b>	Selects the sound mode. • Hold the <b>EQ</b> button on the main unit to enter tone level adjustment directly. (page 10)
Number buttons (1 – 6)	—	• Selects preset stations. • Stores the current station into the selected number button [Hold]. • Press number button <b>1 (RPT)</b> or <b>2 (RND)</b> to enter REPEAT/ RANDOM setting directly. (page 8)
<b>BRIGHTNESS</b>	—	Enters <BRIGHTNESS> menu directly. (page 11)
<b>BACK</b>	—	• Returns to the previous menu. • Exit from the menu [Hold].
<b>DISP</b>	—	• Changes the display information. • Scrolls the display information [Hold].

# Listening to the radio



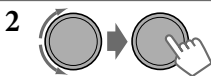
⇒ "FM" or "AM"



- Auto search [Press].
  - Manual search [Hold].
- "M" flashes, then press the button repeatedly.

"ST" lights up when receiving an FM stereo broadcast with sufficient signal strength.

## Improving the FM reception



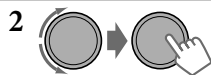
⇒ <TUNER> ⇒ <MONO ON> ⇒ <MONO ON>  
Reception improves, but stereo effect will be lost.

**To restore the stereo effect**, repeat the same procedure to select <MONO OFF>.

## Automatic presetting (FM)—SSM (Strong-station Sequential Memory)

You can preset up to 18 stations for FM.

While listening to a station...



⇒ <TUNER> ⇒ <SSM> ⇒  
<SSM 01 – 06 / 07 – 12 / 13 – 18>  
"SSM" flashes and local stations with the strongest signal are searched and stored automatically.

**To preset another 6 stations**, repeat the above procedure by selecting one of the other 6 SSM setting ranges.

## Changing the display information

DISP



Frequency ↔ Clock

## Manual presetting (FM/AM)

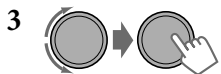
You can preset up to 18 stations for FM and 6 stations for AM.



⇒ Tune in to a station you want to preset.



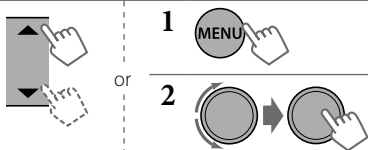
"PRESET MODE" flashes.



⇒ Selects preset number.  
Preset number flashes and "MEMORY" appears.

- Pressing and holding the number buttons (1 – 6) can also store the current station to the selected number buttons (1 – 6).

## Selecting a preset station

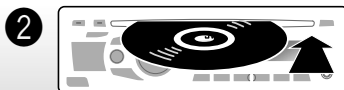


- Pressing the number buttons (1 – 6) can also select the preset stations (1 – 6).

## Using the remote controller

- ▲/▼ : Changes the preset stations.
- ◀/▶ : Searches for stations.

# Listening to a disc



Playback starts automatically.

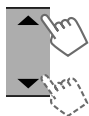
All tracks will be played repeatedly until you change the source or eject the disc.

## Stopping playback and ejecting the disc



If the ejected disc is not removed within 15 seconds, it is automatically inserted into the loading slot.

## Selecting a track/folder



Selects folder of the MP3/WMA



[Press] Selects track.  
[Hold] Fast-forwards or reverses the track.

## Using the remote controller

▲/▼ : Selects folder of the MP3/WMA.

◀/▶ : [Press] Selects track.

[Hold] Fast-forwards or reverses the track.

## Changing the display information



Disc title/Album name/performer (folder name)\* → Track title (file name)\* → Current track number with the elapsed playing time → Current track number with the clock time → (back to the beginning)

\* "NO NAME" appears for conventional CDs or if not recorded.

## Selecting a track/folder from the list



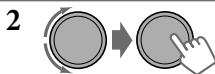
- If the MP3/WMA disc contains many tracks, you can fast search ( $\pm 10, \pm 100$ ) through the disc by turning the control dial quickly.
- To return to the previous menu, press **BACK**.

## Selecting the playback modes

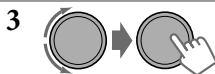
You can use only one of the following playback modes at a time.



- Pressing number button **1 (RPT)** or **2 (RND)** can enter REPEAT/RANDOM setting directly. Then, perform step 3.



⇒ "REPEAT" ↔ "RANDOM"



REPEAT ↺

TRACK RPT : Repeats current track

FOLDER RPT : Repeats current folder

RANDOM ⇄

FOLDER RND : Randomly plays all tracks of current folder, then tracks of next folders

ALL RND : Randomly plays all tracks

**To cancel repeat play or random play**, select "RPT OFF" or "RND OFF."



# Connecting the other external components

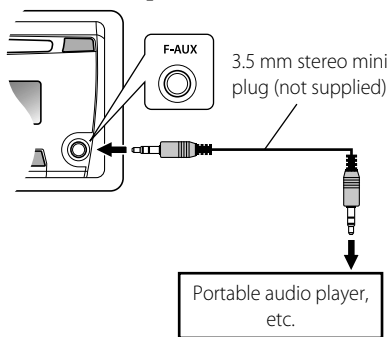
You can connect an external component to the auxiliary input jack on the control panel (F-AUX) and/or on the rear side of the unit (R-AUX).

Summary of using the external components through the auxiliary input jacks:

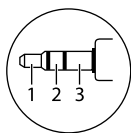
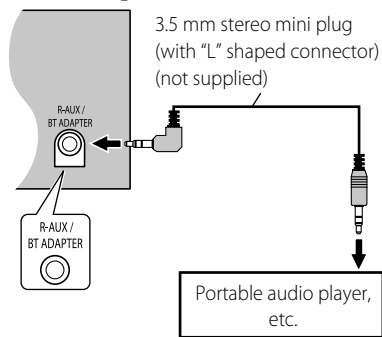
External component	Auxiliary input jack	Preparation			Source name	Connecting cable/device (not supplied)
		Menu setting item	Sub-item	Setting		
Portable audio player	Front	SRC SELECT	F-AUX	ON	F-AUX	See below.
	Rear	SRC SELECT	R-AUX	ON	R-AUX	
Bluetooth device	Rear	SRC SELECT	R-AUX	BT ADAPTER	BT AUDIO/ BT PHONE*	KS-BTA100 (page 14)

\* "BT PHONE" appears when a Bluetooth phone is in use.

## On the control panel (F-AUX):



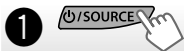
## On the rear panel (R-AUX):



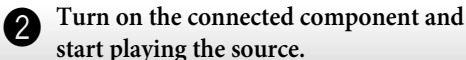
Recommended to use a 3-terminal plug head stereo mini plug for optimum audio output.

# Listening to the other external components

For details, refer also to the instructions supplied with the external components.



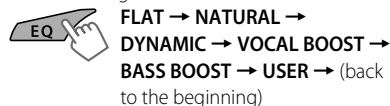
⇒ "F-AUX" or "R-AUX"



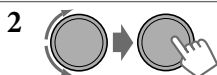
Turn on the connected component and start playing the source.

# Selecting a preset sound mode

You can select a preset sound mode suitable for the music genre.



While listening, you can adjust the tone level of the selected sound mode.

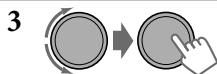


Adjust the level (–06 to +06) of the selected tone (BASS/ MID/ TRE).

The sound mode is automatically stored and changed to “USER.”

## Storing your own sound mode

You can store your own adjustments in memory.



Adjust the sound elements of the selected tone.

**BASS** [Initial: 80 Hz, 00, Q1.0]

Frequency: 60/ 80/ 100/ 200 Hz

Level: –06 to +06

Q: Q1.0/ 1.25/ 1.5/ 2.0

**MIDDLE** [Initial: 1.0 kHz, 00, Q1.25]

Frequency: 0.5/ 1.0/ 1.5/ 2.5 kHz

Level: –06 to +06

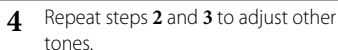
Q: Q0.75/ 1.0/ 1.25

**TREBLE** [Initial: 10.0 kHz, 00, Q FIX]

Frequency: 10.0/ 12.5/ 15.0/ 17.5 kHz

Level: –06 to +06

Q: Q FIX

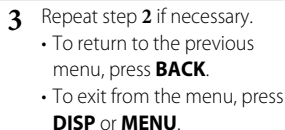
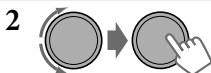


The adjustments made is automatically stored and changed to “USER.”

## Menu operations



If no operation is done for about 60 seconds, the operation will be canceled.



Menu item	Selectable setting, [Initial: <u>Underlined</u> ]
DEMO	For settings, see page 4.
CLOCK	

Menu item		Selectable setting, [Initial: <u>Underlined</u> ]
DIMMER	DIMMER SET	<u>AUTO</u> : Dims the display to the previous setting when you turn on the car headlights. * <sup>1</sup> / <b>ON</b> : Dims the display and button illumination (50% of the selected brightness level). / <b>OFF</b> : Cancels (100% of the selected brightness level).
	BRIGHTNESS	<b>DAY</b> [ <u>31</u> ] / <b>NIGHT</b> [ <u>15</u> ] : Selects the display and button illumination brightness level [00 — 31] for day and night.
DISPLAY	SCROLL * <sup>2</sup>	<b>ONCE</b> : Scrolls the displayed information once. / <b>AUTO</b> : Repeats scrolling (at 5-second intervals). / <b>OFF</b> : Cancels. (Pressing <b>DISP</b> for more than one second can scroll the display regardless of the setting.)
	TAG DISPLAY	<u>ON</u> : Shows the Tag information while playing MP3/WMA tracks. / <b>OFF</b> : Cancels.
PRO EQ		See page 10.
AUDIO	FADER * <sup>3</sup> , * <sup>4</sup>	<b>R06 — F06</b> [ <u>00</u> ] : Adjusts the front and rear speaker output balance.
	BALANCE * <sup>4</sup>	<b>L06 — R06</b> [ <u>00</u> ] : Adjusts the left and right speaker output balance.
	LOUD	<b>ON</b> : Boost low and high frequencies to produce a well-balanced sound at a low volume level. / <b>OFF</b> : Cancels.
	VOL ADJUST	<b>-05 — +05</b> [ <u>00</u> ] : Presets the volume adjustment level of each source (except "FM"), compared to the FM volume level. The volume level will automatically increase or decrease when you change the source. Before adjustment, select the source you want to adjust. ("VOL ADJ FIX" appears on the display if "FM" is selected as the source.)
	L/O MODE	<b>SUB.W</b> : Selects if the REAR/SW terminals are used for connecting a subwoofer (through an external amplifier). / <b>REAR</b> : Selects if the REAR/SW terminals are used for connecting the speakers (through an external amplifier).
	SUB.W LPF * <sup>5</sup>	<b>LOW 55Hz / LOW 85Hz / LOW 120Hz</b> : Frequencies lower than 55 Hz/85 Hz/120 Hz are sent to the subwoofer.
	SUB.W LEVEL * <sup>5</sup>	<b>00 — 08</b> [ <u>04</u> ] : Adjusts the subwoofer output level.
	HPF	<b>ON</b> : Activates the High Pass Filter. The unit selects the cutoff frequency to the rear speakers. / <b>OFF</b> : Deactivates (all signals are sent to the rear speakers).
	BEEP	<u>ON</u> / <b>OFF</b> : Activates or deactivates the keypress tone.
	TEL MUTING * <sup>6</sup>	<b>ON</b> : Mutes the sounds while using the cellular phone (not connected through KS-BTA100). / <b>OFF</b> : Cancels.

\*<sup>1</sup> The illumination control lead connection is required. (See "Installation/Connection Manual.") This setting may not work correctly on some vehicles (particularly on those having a control dial for dimming). In this case, change the setting to any other than <DIMMER AUTO>.

\*<sup>2</sup> Some characters or symbols will not be shown correctly (or will be blanked) on the display.

\*<sup>3</sup> If you are using a two-speaker system, set the fader level to "00."

\*<sup>4</sup> This adjustment will not affect the subwoofer output.

\*<sup>5</sup> Displayed only when <L/O MODE> is set to <SUB.W>.

\*<sup>6</sup> This setting does not work if <BT ADAPTER> is selected for <R-AUX> of the <SRC SELECT>.

Continued...

ENGLISH | 11

Menu item		Selectable setting, [Initial: <u>Underlined</u> ]
AUDIO	<b>AMP GAIN</b> *7	<b>LOW POWER</b> : VOLUME 00 – VOLUME 30 (Selects if the maximum power of each speaker is less than 50 W to prevent damaging the speakers.) / <b>HIGH POWER</b> : VOLUME 00 – VOLUME 50
	<b>SSM</b> *8	See page 7.
TUNER	<b>MONO</b> *8	See page 7.
	<b>IF BAND</b>	<b>AUTO</b> : Increases the tuner selectivity to reduce interference noises between adjacent stations. (Stereo effect may be lost.) / <b>WIDE</b> : Subject to interference noises from adjacent stations, but sound quality will not be degraded and the stereo effect will remain.
SRC SELECT	<b>AM</b> *9	<b>ON</b> / <b>OFF</b> : Enable or disable “AM” in source selection.
	<b>F-AUX</b> *9	<b>ON</b> / <b>OFF</b> : Enable or disable “F-AUX” in source selection.
	<b>R-AUX</b> *9	<b>ON</b> / <b>OFF</b> : Enable or disable “R-AUX” in source selection. / <b>BT ADAPTER</b> *10 : Selects if the rear auxiliary input jack is connected to the Bluetooth adapter, KS-BTA100. (page 9)

\*7 The volume level automatically changes to “VOLUME 30” if you change to <LOW POWER> with the volume level set higher than “VOLUME 30.”

\*8 Displayed only when the source is “FM.”

\*9 Displayed only when any source other than “AM/ F-AUX/ R-AUX/ BT AUDIO” is selected separately.

\*10 When <BT ADAPTER> is selected, source name is changed to “BT AUDIO” from “R-AUX.”

### **Additional information**

- This unit can play back multi-session discs; however, unclosed sessions will be skipped while playing.
- This unit can play back files with the extension code <.mp3> or <.wma> (regardless of the letter case—upper/lower).
- This unit can play back the files meeting the conditions below:
  - Bit rate: MP3/WMA: 8 kbps — 320 kbps
  - Sampling frequency:
    - MP3: 48 kHz, 44.1 kHz, 32 kHz
    - 24 kHz, 22.05 kHz, 16 kHz
    - WMA: 48 kHz, 44.1 kHz, 32 kHz, 22.05 kHz
- This unit can show WMA Tag and ID3 Tag Version 1.0/1.1/2.2/3/2.4 (for MP3).
- The search function works but search speed is not constant.
- The maximum number of characters for file/folder names vary depending on the disc format used (includes 4 extension characters—<.mp3> or <.wma>).
  - ISO 9660 Level 1 and 2, Romeo: 64 characters, Joliet: 32 characters, Windows long file name: 64 characters
- This unit can play back files recorded in VBR (variable bit rate). (Files recorded in VBR have a discrepancy in elapsed time indication.)
- This unit cannot play back the following files:
  - MP3 files: encoded in MP3i and MP3 PRO format; an inappropriate format; layer 1/2.
  - WMA files: encoded in lossless, professional, and voice format; not based upon Windows Media® Audio; copy-protected with DRM.
  - Files which have data such as AIFF, ATRAC3, etc.

# Troubleshooting

	Symptom	Remedy/Cause
General	Sound cannot be heard from the speakers.	<ul style="list-style-type: none"> <li>Adjust the volume to the optimum level.</li> <li>Make sure the unit is not muted/paused. (page 6)</li> <li>Check the cords and connections.</li> </ul>
	"MISWIRING CHK WIRING THEN RESET UNIT" appears on the display and no operations can be done.	Check to be sure the terminals of the speaker leads are covered with insulating tape properly, then reset the unit. (page 3) If the message does not disappear, consult your JVC car audio dealer or a company supplying kits.
	The unit does not work at all.	Reset the unit. (page 3)
	"F-AUX" or "R-AUX" cannot be selected.	Check the <SRC SELECT> → <F-AUX / R-AUX> setting. (page 12)
	Sound is sometimes interrupted while listening to an external component connected to the auxiliary input jack.	Check to be sure the recommended stereo mini plug is used for connection. (page 9)
FM/AM	SSM automatic presetting does not work.	Store stations manually.
	Static noise while listening to the radio.	Connect the antenna firmly.
	"AM" cannot be selected.	Check the <SRC SELECT> → <AM> setting. (page 12)
Disc playback	Disc cannot be played back.	Insert the disc correctly.
	CD-R/CD-RW cannot be played back and track cannot be skipped.	Insert a finalized CD-R/CD-RW (finalize with the component which you used for recording).
	Disc sound is sometimes interrupted.	Stop playback while driving on rough roads. / Change the disc. / Check the cords and connections.
	"NO DISC" appears on the display.	Insert a playable disc into the loading slot.
	"PLEASE" and "EJECT" appear alternately on the display.	Press ▲, then insert a disc correctly.
	"IN DISC" appears on the display.	The disc cannot be ejected properly. Make sure nothing is blocking the loading slot.
MP3/WMA playback	Disc cannot be played back.	<ul style="list-style-type: none"> <li>Use a disc with MP3/WMA tracks recorded in a format compliant with ISO 9660 Level 1, Level 2, Romeo, or Joliet.</li> <li>Add the extension code &lt;.mp3&gt; or &lt;.wma&gt; to the file names.</li> </ul>
	Noise is generated.	Skip to another track or change the disc.
	"READING" keeps flashing on the display.	A longer readout time is required. Do not use too many hierarchical levels and folders.
	Tracks do not play back in the order you have intended them to play.	The playback order is determined when the files are recorded.
	The elapsed playing time is not correct.	This sometimes occurs during playback. This is caused by how the tracks are recorded on the disc.
	The correct characters are not displayed (e.g. album name).	This unit can only display letters (upper case), numbers, and a limited number of symbols.

# Using Bluetooth® devices

For Bluetooth operations, it is required to connect the Bluetooth adapter, KS-BTA100 (not supplied) to the auxiliary input jack (R-AUX/BT ADAPTER) on the rear of the unit. (page 9)

- For details, refer also to the instructions supplied with the Bluetooth adapter and the Bluetooth device.

## Preparation

### 1 Register (pair) a Bluetooth device with KS-BTA100.

Refer to the instructions manual supplied with KS-BTA100.

### 2 Change the <SRC SELECT> settings of this unit.



## Using the Bluetooth mobile phone

(Low) (High)

### Adjusting the microphone volume

Volume level: High/ Normal (initial)/ Low

KS-BTA100

Microphone

- **Receiving a call**  
When a call comes in...
- **Making a call**  
Making a call to the last connected number from your phone.
- **Switching between handsfree and phone**  
While talking...
- **Ends/rejects call**
- **Voice dialing**  
Voice dialing is available only when the connected mobile phone has the voice recognition system. To use this, speak the name you want to call clearly.

[Hold]  
( < 5 seconds)

## Using the Bluetooth audio device

1 => "BT AUDIO"  
(CD receiver)

2 If playback does not start, operate the Bluetooth audio player to start playback.

[Press] Selects track.  
[Hold] Fast-forwards or reverses the track.

### About microphone volume:

- When you turn off the power of the CD receiver, the volume level changes to Normal.

# Specifications

## AUDIO AMPLIFIER SECTION

**Maximum Power Output** : 50 W per channel

**Continuous Power Output (RMS)** : 20 W per channel into 4  $\Omega$ , 40 Hz to 20 000 Hz at no more than 1% total harmonic distortion.

**Signal-to-Noise Ratio** : 70 dB

**Load Impedance** : 4  $\Omega$  (4  $\Omega$  to 8  $\Omega$  allowance)

**Frequency Response** : 40 Hz to 20 000 Hz

**Line-Out or Subwoofer-Out Level/**

**Impedance** : 2.5 V/20 k $\Omega$  load (full scale)

**Output Impedance** : 1 k $\Omega$

**Other Terminal** : Antenna input, Front auxiliary input jack, Rear auxiliary/Bluetooth adapter input jack

## TUNER SECTION

**Frequency Range** :

**FM** : 87.5 MHz to 108.0 MHz

**AM** : 531 kHz to 1 611 kHz

**FM Tuner** :

**Usable Sensitivity** : 9.3 dBf (0.8  $\mu$ V/75  $\Omega$ )

**50 dB Quieting Sensitivity** : 16.3 dBf (1.8  $\mu$ V/75  $\Omega$ )

**Alternate Channel Selectivity (400 kHz)** : 65 dB

**Frequency Response** : 40 Hz to 15 000 Hz

**Stereo Separation** : 40 dB

**AM Tuner** :

**Sensitivity/Selectivity** : 20  $\mu$ V/40 dB

## CD PLAYER SECTION

**Type** : Compact disc player

**Signal Detection System** : Non-contact optical pickup (semiconductor laser)

**Number of Channels** : 2 channels (stereo)

**Frequency Response** : 5 Hz to 20 000 Hz

**Signal-to-Noise Ratio** : 98 dB

**Wow and Flutter** : Less than measurable limit

**MP3 Decoding Format (MPEG1/2 Audio Layer 3)** : Max. Bit Rate: 320 kbps

**WMA (Windows Media® Audio) Decoding**

**Format** : Max. Bit Rate: 192 kbps

## GENERAL

**Power Requirement** : Operating Voltage :

DC 14.4 V (11 V to 16 V allowance)

**Grounding System** : Negative ground

**Allowable Operating Temperature** : 0°C to +40°C

**Dimensions (W × H × D) : (approx.)**

– Installation Size :

182 mm × 52 mm × 159 mm

– Panel Size :

188 mm × 59 mm × 9 mm

**Mass** : 1.2 kg (excluding accessories)

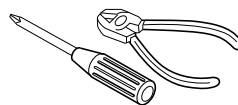
Subject to change without notice.

Microsoft and Windows Media are either registered trademarks or trademarks of Microsoft Corporation in the United States and/or other countries.

# JVC KD-R326/KD-R325

## Installation/Connection Manual

การติดตั้ง/คู่มือการติดตั้ง



GET0675-006A  
[U/UH]

0910DTSMDTJEIN  
EN, TH

© 2010 Victor Company of Japan, Limited

ENGLISH / ไทย

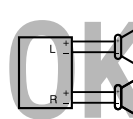
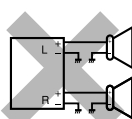
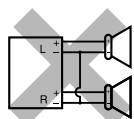
### WARNINGS / คำเตือน

- You need the installation kits which corresponds to your car.
- If you have any questions or require information regarding installation kits, consult your JVC car audio dealer or a company supplying kits.
- The unit can only be installed in a car with a 12 V DC power supply, negative ground.
- Disconnect the battery's negative terminal and make all electrical connections before installing the unit.
- Connect speakers with a maximum power of more than 50 W (impedance of 4 Ω to 8 Ω). Otherwise, change the <AMP GAIN> setting. (See page 12 of the INSTRUCTIONS.)
- Insulate unconnected wires with vinyl tape or other similar material. To prevent a short circuit, do not remove the caps on the ends of the unconnected wires or the terminals.
- If the fuse blows, first make sure the wires are not touching to cause a short circuit, then replace the old fuse with one that has the same rating.
- Install this unit in the console of your vehicle.
- Mount the unit so that the mounting angle is 30° or less.
- Be sure to ground this unit to the car's chassis again after installation.
- After the unit is installed, check whether the brake lamps, blinkers, wipers, etc. on the car are working properly.
- Do not touch the metal part of this unit during and shortly after the use of the unit. Metal part such as the heat sink and enclosure become hot.

- ต้องใช้ชุดติดตั้งที่เหมาะสมกับรถของท่าน
- หากท่านมีคำถามหรือต้องการข้อมูลเกี่ยวกับชุดติดตั้ง โปรดปรึกษาตัวแทนจำหน่ายเครื่องเสียงติดรถยนต์ JVC ของท่านหรือบริษัทที่จัดหาชุดอุปกรณ์ให้
- เครื่องสามารถติดตั้งในรถยนต์ที่มีแหล่งจ่ายไฟ DC 12 V และต่อกราวด์ลบเท่านั้น
- ถอดขั้วลบของแบตเตอรี่ออก และเชื่อมต่อไฟทั้งหมดก่อนติดตั้งเครื่อง
- ต่อลำโพงเข้ากับแหล่งจ่ายไฟที่ไม่เกิน 50 W (ค่าความต้านทาน 4 Ω ถึง 8 Ω) หรือเปลี่ยนการตั้งค่า <AMP GAIN> (ดูหน้า 12 คำแนะนำ)
- หุ้มสายไฟที่ไม่ได้เชื่อมต่อด้วยเทปไวน์ลหรือวัสดุอื่นที่ใกล้เคียงกันนี้ เพื่อป้องกันไม่ให้เกิดไฟลัดวงจร
- อย่าถอดฝาครอบที่ปลายสายไฟหรือขั้วต่อที่ยังไม่ได้เชื่อมต่อออก
- หากฟิวส์ขาด ก่อนอื่นตรวจสอบดูว่าสายไฟไม่ได้สัมผัสกันจนเป็นเหตุให้เกิดการลัดวงจร แล้วเปลี่ยนฟิวส์เก่าด้วยฟิวส์ใหม่ที่ค่าสัณไฟเดียวกัน
- ติดตั้งเครื่องนี้ในแผงหน้าปัดของรถยนต์
- ติดตั้งเครื่องโดยให้เครื่องทำมุม 30° หรือน้อยกว่า
- ตรวจสอบให้แน่ใจว่าติดตั้งเครื่องกับโครงรถก่อนการติดตั้ง
- หลังจากติดตั้งเครื่องแล้ว ให้ตรวจสอบดูว่าไฟเบรก ไฟกะพริบ ที่ปัดน้ำฝน ฯลฯ ในรถยนต์ทำงานอย่างเหมาะสม
- ไม่สัมผัสกับส่วนที่เป็นโลหะของตัวเครื่องในระหว่างการใช้งานและหลังจากที่ปิดเครื่องได้ไม่นาน
- ชิ้นส่วนโลหะอย่างเช่นแผ่นระบายความร้อนและตัวเครื่อง อาจร้อนจัด

### PRECAUTIONS on power supply and speaker connections

- DO NOT connect the speaker leads of the power cord to the car battery; otherwise, the unit will be seriously damaged.
- BEFORE connecting the speaker leads of the power cord to the speakers, check the speaker wiring in your car.



### ข้อควรระวังเกี่ยวกับการเชื่อมต่อแหล่งจ่ายไฟและลำโพง

- อย่าต่อสายลำโพงที่เป็นสายไฟกับแบตเตอรี่รถยนต์ ไม่เช่นนั้นเครื่องอาจได้รับความเสียหายร้ายแรง
- ก่อนต่อสายลำโพงที่เป็นสายไฟกับลำโพง ควรตรวจสอบการเดินสายลำโพงในรถของท่าน

### INSTALLATION / การติดตั้ง

#### In-dash mounting / การติดตั้งจอแบบ In-dash

**1**

**2**

**3**

Do the required electrical connections. / เชื่อมต่อไฟที่จำเป็น

Install the unit at an angle of less than 30°. / ติดตั้งเครื่องในมุมน้อยกว่า 30°

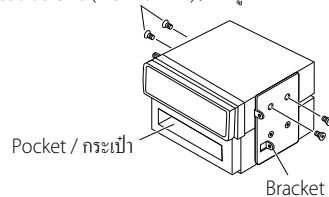
Bend the appropriate tabs to hold the sleeve firmly in place. / บิดแถบล็อกเพื่อรองรับปลอกหุ้มให้เข้าที่อย่างแน่นหนา

#### Part list / รายการอุปกรณ์

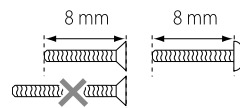
- (A) Hard case / โครงแบบหนา (x1)
- (B) Control panel / แผงควบคุม (x1)
- (C) Sleeve / ปลอกหุ้ม (x1)
- (D) Trim plate / ทริมเพลท (x1)
- (E) Power cord / สายไฟ (x1)
- (F) Handles / ที่จับ (x2)

#### When installing the unit without using the sleeve / เมื่อติดตั้งเครื่องโดยไม่ใช้ปลอกหุ้ม

Flat head screws (M5 × 8 mm) / ตะปูคางหัวแบน (M5 × 8 mm) \*



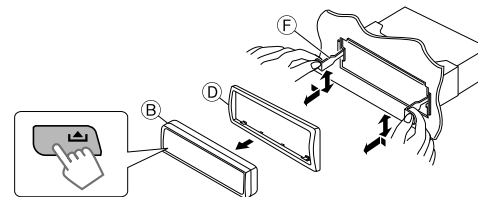
Bracket / ขาแขวน \*



\* Not supplied for this unit.  
\* ไม่ได้จัดส่งให้สำหรับเครื่องนี้

#### Removing the unit / การถอดเครื่อง

Release the rear section first... / ปลดส่วนหลังก่อน...



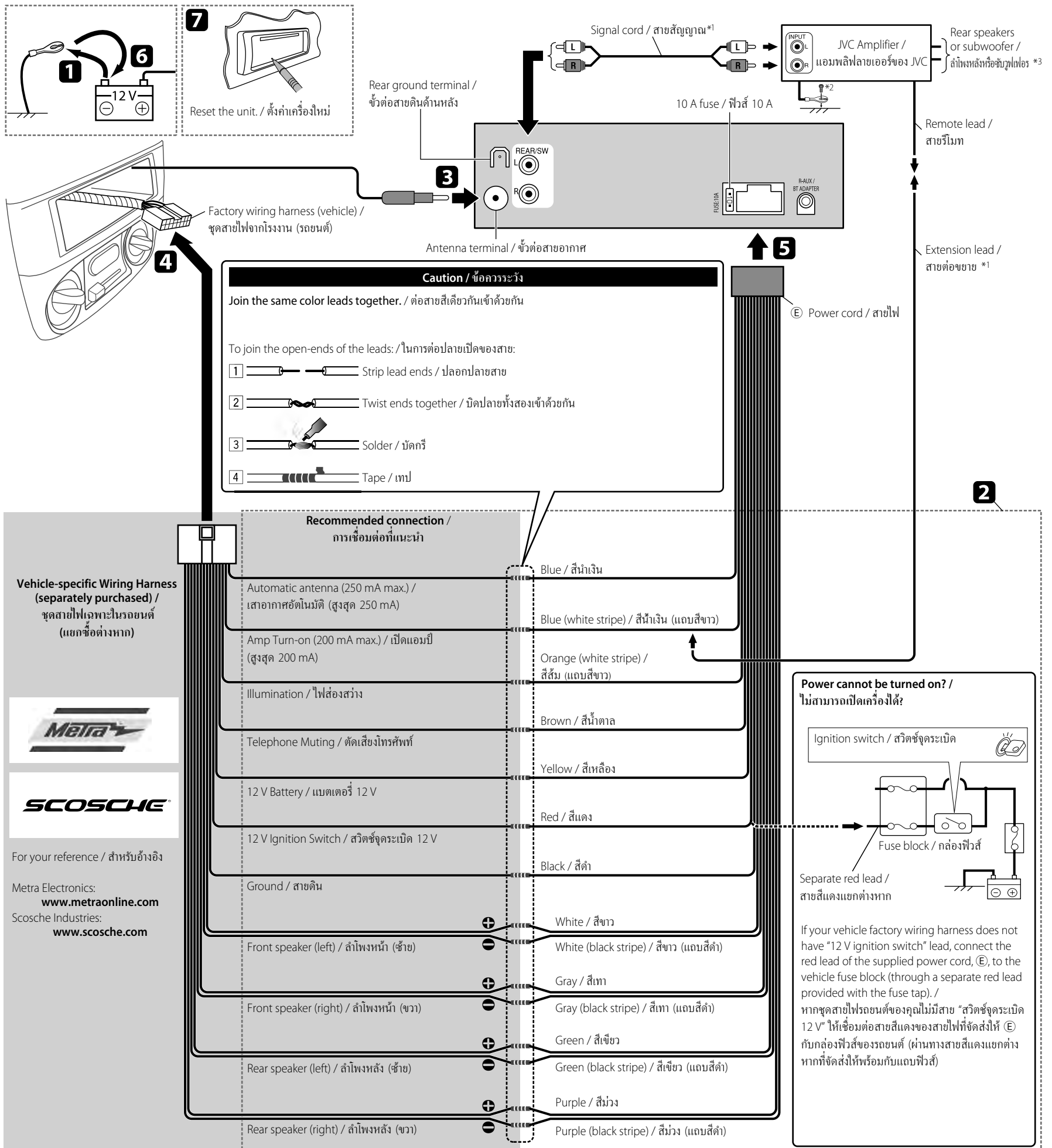
### TROUBLESHOOTING / การแก้ไขปัญหาเบื้องต้น

- The fuse blows.** ⇒ Are the red and black leads connected correctly?
- Power cannot be turned on.** ⇒ Is the yellow lead connected?
- No sound from the speakers.** ⇒ Is the speaker output lead short-circuited?
- "MISWIRING CHK WIRING THEN RESET UNIT" appears on the display and no operation can be done.** ⇒ Is the speaker output lead short-circuited or touches the chassis of the car/head unit? ; Have you reset your unit?
- Sound is distorted.** ⇒ Is the speaker output lead grounded? ; Are the "-" terminals of L and R speakers grounded in common?
- Noise interfere with sounds.** ⇒ Is the rear ground terminal connected to the car's chassis using shorter and thicker cords?
- This unit becomes hot.** ⇒ Is the speaker output lead grounded? ; Are the "-" terminals of L and R speakers grounded in common?
- This unit does not work at all.** ⇒ Have you reset your unit?

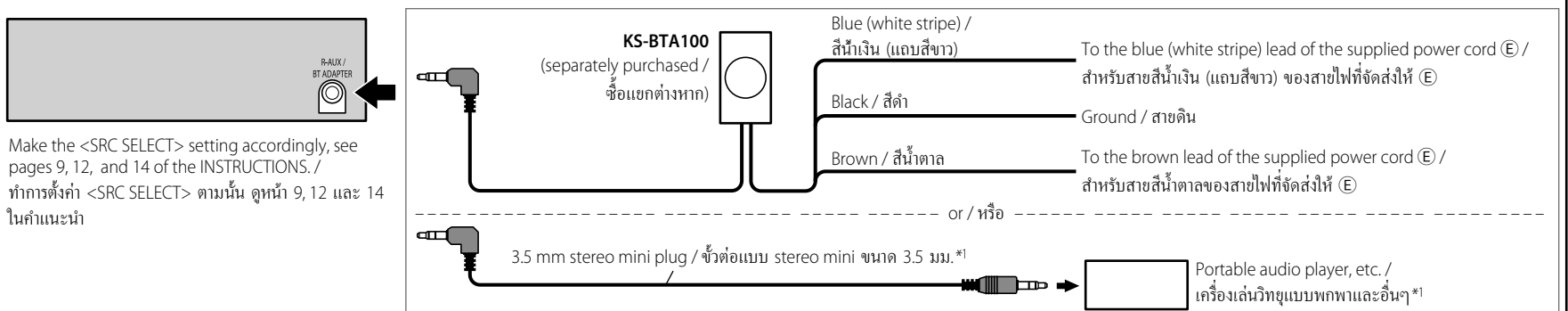
- ฟิวส์ขาด ⇒ ต่อสายสีแดงและสีดำถูกต้องหรือไม่?
- ไม่สามารถเปิดเครื่องได้ ⇒ ต่อสายสีเหลืองแล้วหรือไม่?
- ไม่ได้ยินเสียงจากลำโพง ⇒ สายสัญญาณออกของลำโพงลัดวงจรหรือไม่?
- ข้อความ "MISWIRING CHK WIRING THEN RESET UNIT" ปรากฏขึ้นบนหน้าจอและเครื่องไม่สามารถทำงานได้ ⇒ สายสัญญาณออกของลำโพงลัดวงจรหรือสัมผัสกับโครงรถ/ตัวเครื่องหลักหรือไม่? ; ท่านตั้งเครื่องใหม่ใช้หรือไม่?
- เสียงผิดเพี้ยน ⇒ สายสัญญาณออกของลำโพงต่อกับสายดินหรือไม่? ; ขั้วต่อ "-" ของลำโพง L (ซ้าย) และ R (ขวา) ต่อสายดินไว้ด้วยกันหรือไม่?
- มีเสียงรบกวน ⇒ ขั้วต่อสายดินด้านหลังต่อกับโครงรถใช้สายที่สั้นและหนากว่าหรือไม่?
- เครื่องร้อน ⇒ สายสัญญาณออกของลำโพงต่อกับสายดินหรือไม่? ; ขั้วต่อ "-" ของลำโพง L (ซ้าย) และ R (ขวา) ต่อสายดินไว้ด้วยกันหรือไม่?
- เครื่องใช้งานไม่ได้เลย ⇒ ท่านตั้งเครื่องใหม่ใช้หรือไม่?



# ELECTRICAL CONNECTIONS / การเชื่อมต่อไฟฟ้า



## Connecting the Bluetooth adapter or portable audio player / การเชื่อมต่ออะแดปเตอร์ Bluetooth หรือเครื่องเล่นเพลงขนาดเล็กพกพา



\*1 Not supplied for this unit.

\*2 Firmly attach the ground wire to the metallic body or to the chassis of the car—to the place uncoated with paint.

\*3 Make the <L/O MODE> setting accordingly, see page 11 of the INSTRUCTIONS.

\*1 ไม่ได้จัดส่งให้สำหรับเครื่องนี้

\*2 ติดสายดินกับตัวเครื่องที่เป็นโลหะหรือโครงรถให้แน่นหนา—ในส่วนที่ไม่ได้พ่นสี

\*3 ตั้งค่า <L/O MODE> ให้สอดคล้อง ดูหน้า 11 ในคำแนะนำ

# Having TROUBLE with operation? Please reset your unit

Refer to page of How to reset your unit

หากมีปัญหาในการใช้งาน  
กรุณากดปุ่มตั้งค่าเริ่มต้นใหม่  
กรุณาดูหน้าวิธีตั้งค่าเครื่องใหม่

# JVC



EN, TH

© 2010 Victor Company of Japan, Limited

0910DTSMDTJEIN

[Get other manuals https://www.bkmanuals.com](https://www.bkmanuals.com)