

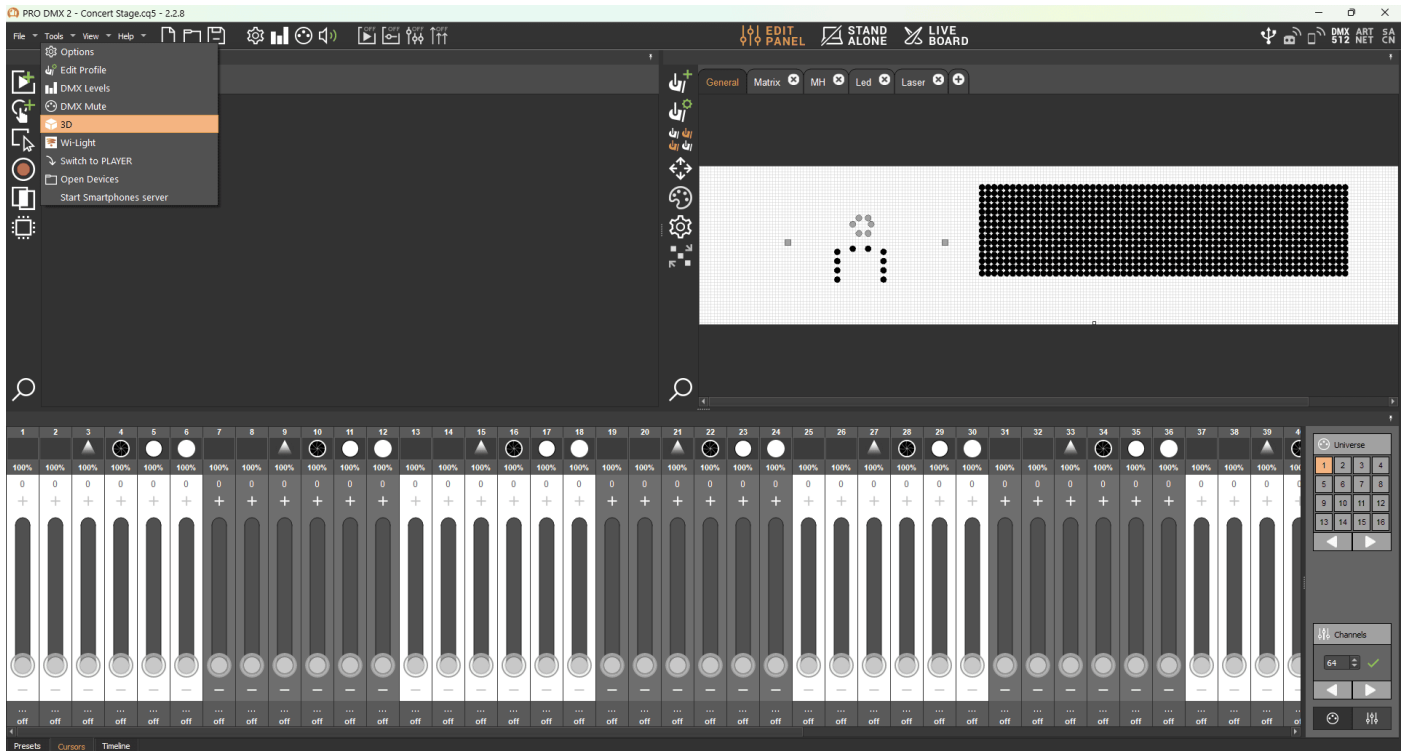
# Control Studio DMX via Art-Net or sACN input

To control Studio DMX you have to create a ProDMX 2 patch with all the fixtures you want to see in the 3D.

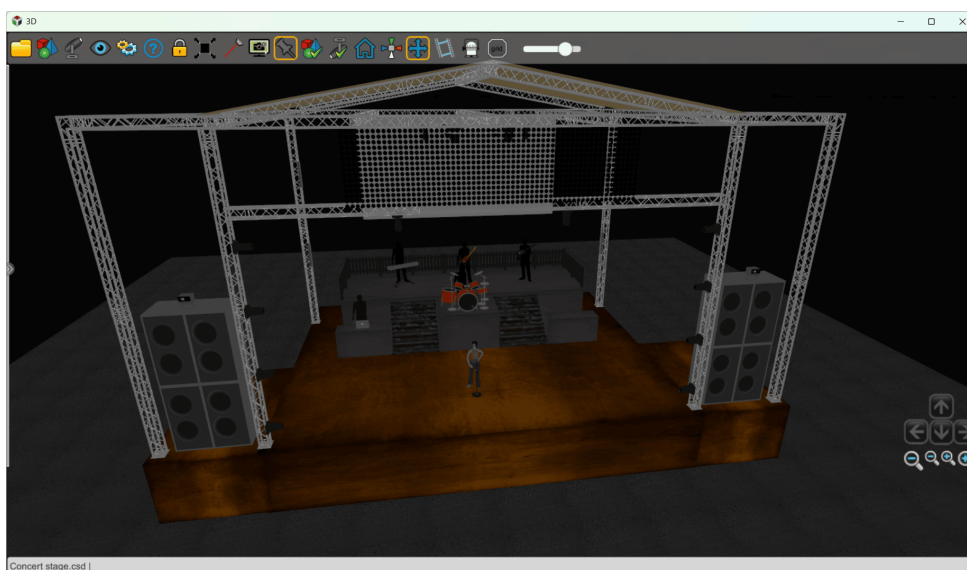
Refer to Pro DMX 2 manuals.

Then start Studio DMX to create the 3D show :

-> Click to "Tools" and "3D"



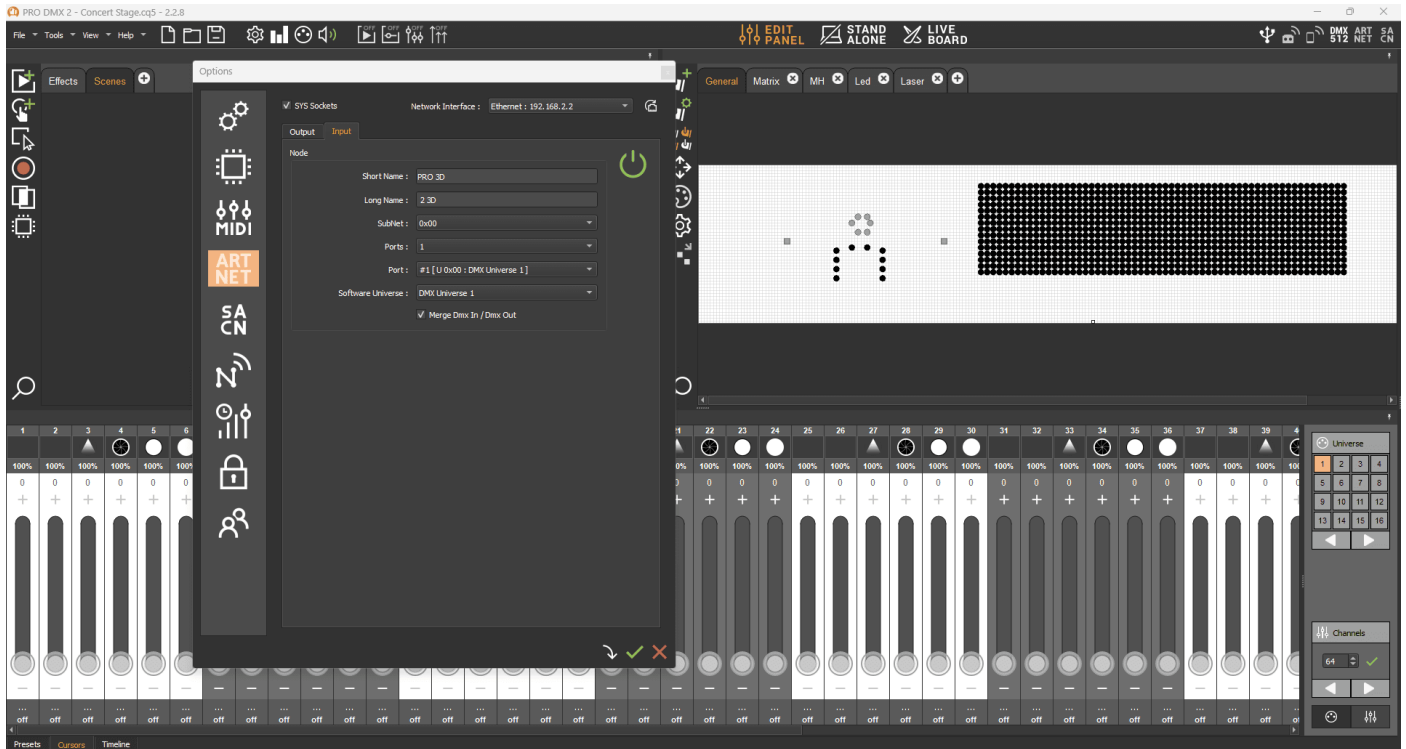
Refer to Studio DMX manual to create the show.



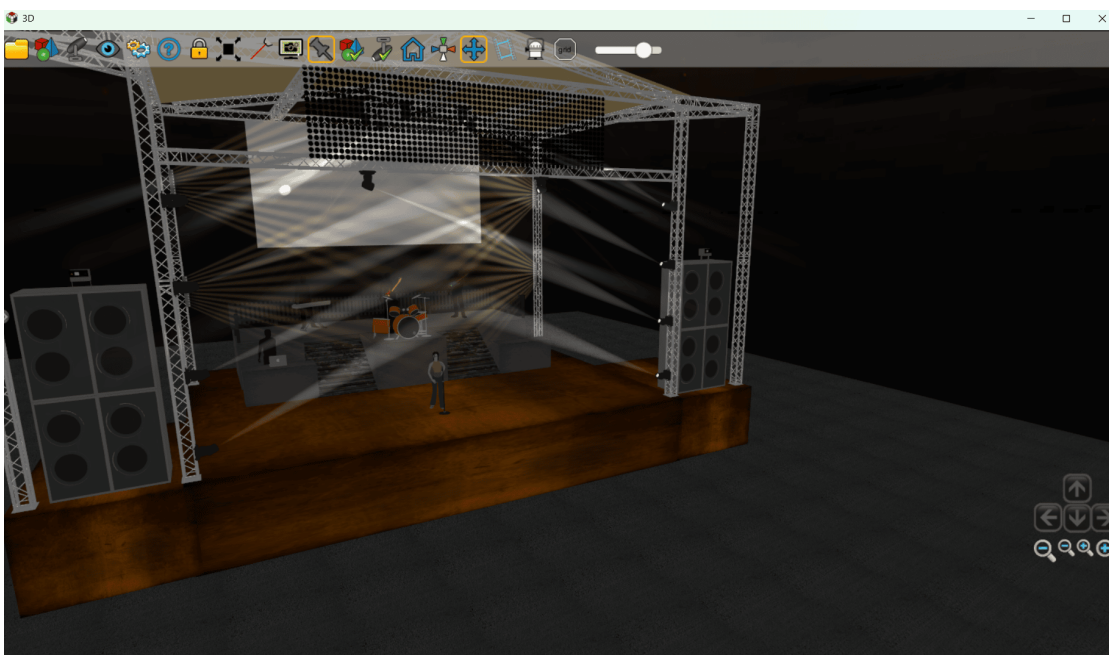
## By Art-Net

Once the show is created set Pro DMX 2 Art-Net input settings :

- > Click to "Tools" -> "Options"-> ARTNET
- > Select the network card corresponding to your Art-Net installation
- > Activate the "Merge Dmx In / Dmx Out" option
- > Activate Art-net Input



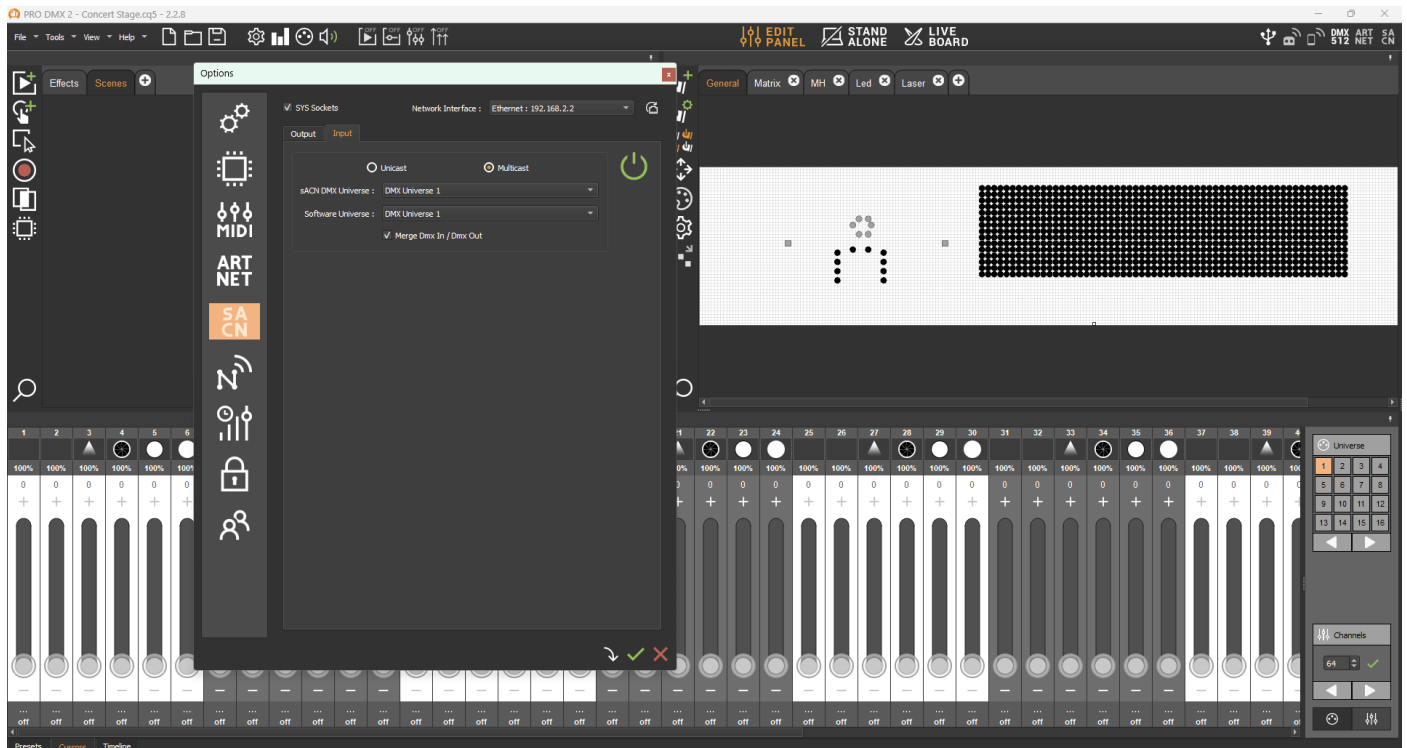
Now you can send Art-Net from your external source and see the result in Studio DMX



## By sACN

Once the show is created set Pro DMX 2 Art-Net input settings :

- > Click to "Tools" -> "Options"-> SACN
- > Select the network card corresponding to your Art-Net installation
- > Select "Unicast" or "Multicast"
- > Activate the "Merge Dmx In / Dmx Out" option
- > Activate sACN Input



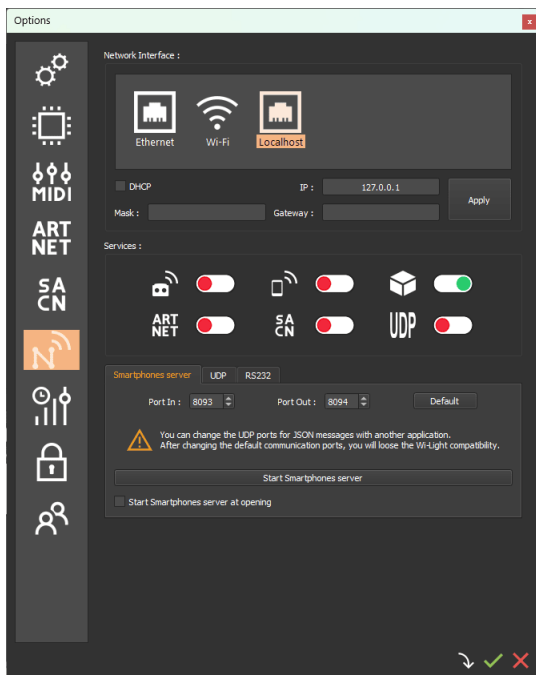
Now you can send sACN from your external source and see the result in Studio DMX

# Troubleshooting

- If you don't see your fixtures patched in Pro DMX 2 in Studio DMX check the Network part in Options :

-> Click to "Tools" -> "Options"-> Network

-> Select "Localhost" network card and activate cube icon (Studio DMX)



- If Art-Net or sACN signal is not received in ProDMX 2 check the firewall settings to allows corresponding UDP ports :

Art-Net : port 6454

sACN : port 5568