

SP13BB | SP13GG | SP13WW

User Manual

**iTouchless Prime™ 13.2 Gallon Plastic Sensor Kitchen Trash Can
(Black, Gray, or White)**



SP13BB
(Black)

SP13GG
(Gray)

SP13WW
(White)

ABOUT THE COMPANY

iTouchless is the "Touch less, live more!" company.

Our technologically advanced waste receptacles and housewares are with you throughout your day – at home and at work – making daily chores quicker, easier, and more hygienic, so you can focus on the things that matter most. Our products are designed by industry professionals who have been inventing innovative smart housewares for decades. Everything we make is rigorously tested to ensure you're getting a high quality product that will work perfectly for years of use.

We also design our products to be as attractive as they are dependable, so you can get the perfect look to match any décor.

#TouchLessLiveMore

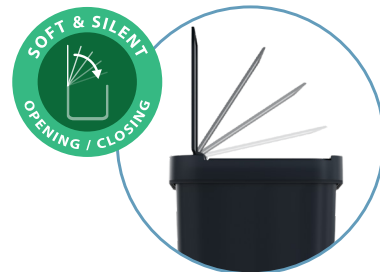
FEATURES



Motion Activated
Touchless Sensor

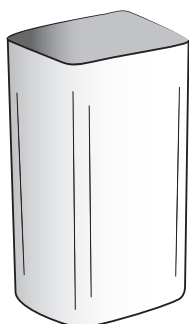


Trash Bag
Retainer Ring



Soft & Silent
Opening / Closing

CONTENTS OF THE BOX



Trash Can
Body



Lid



Trash Bag
Retainer Ring

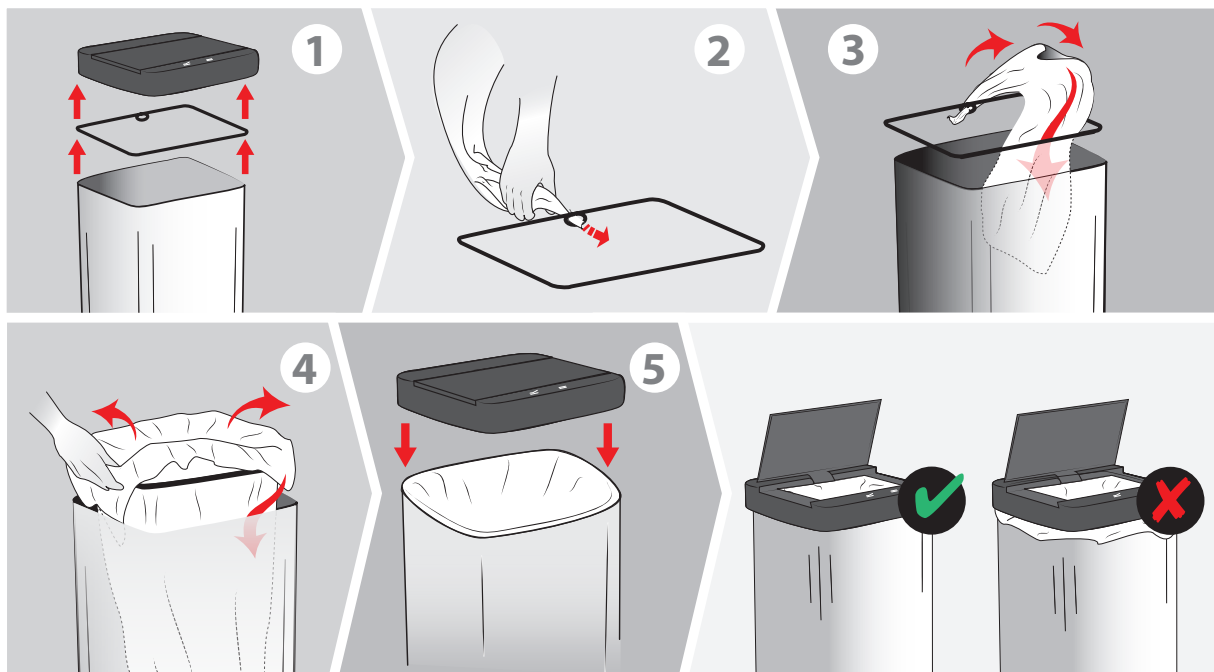


User
Manual

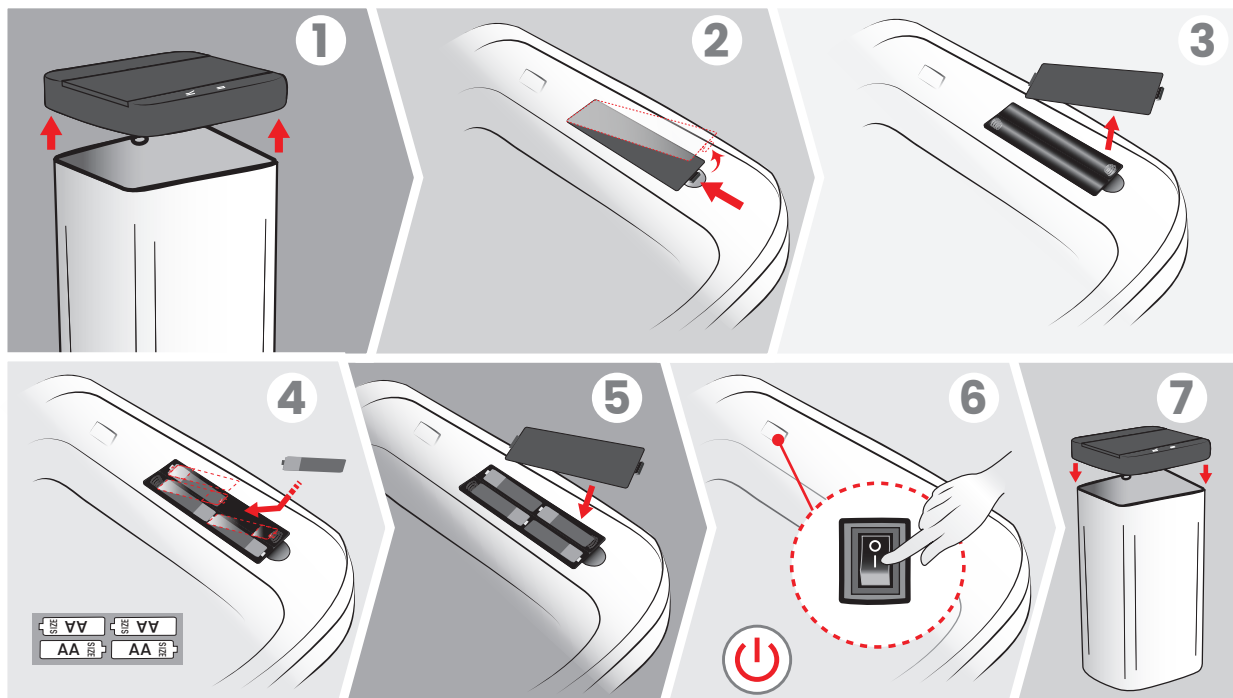
Replacement Parts & Optional Accessories: www.itouchless.com

Set-Up and Use

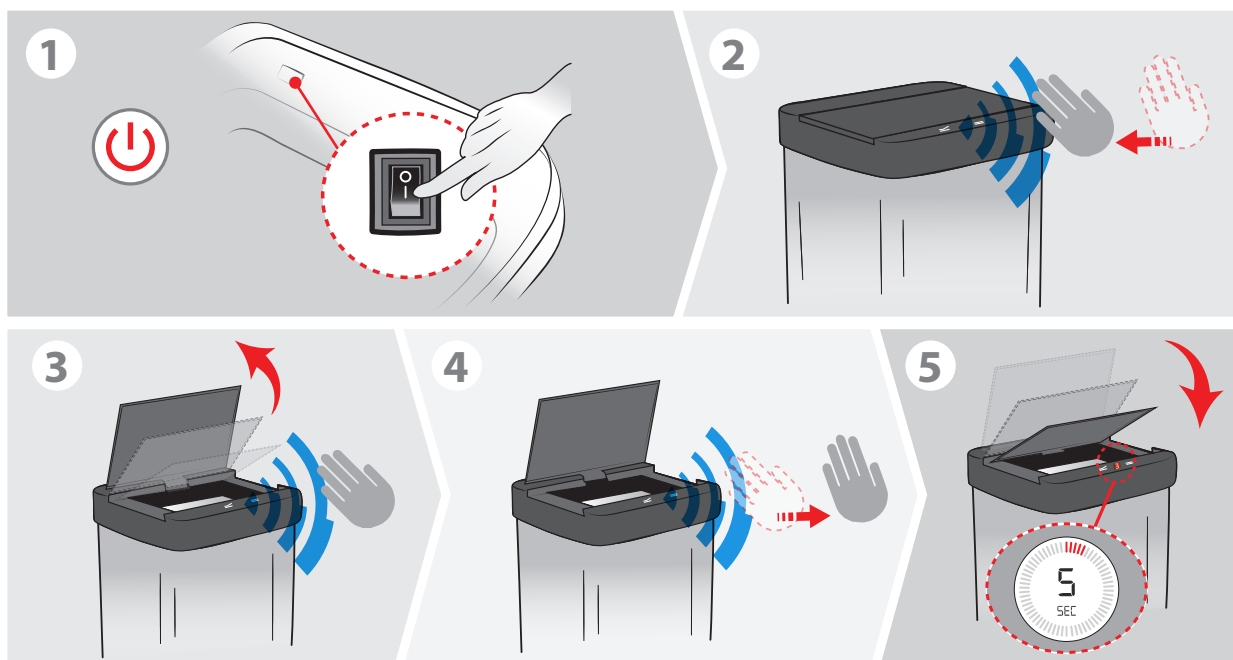
INSERT TRASH BAG USING RETAINER RING



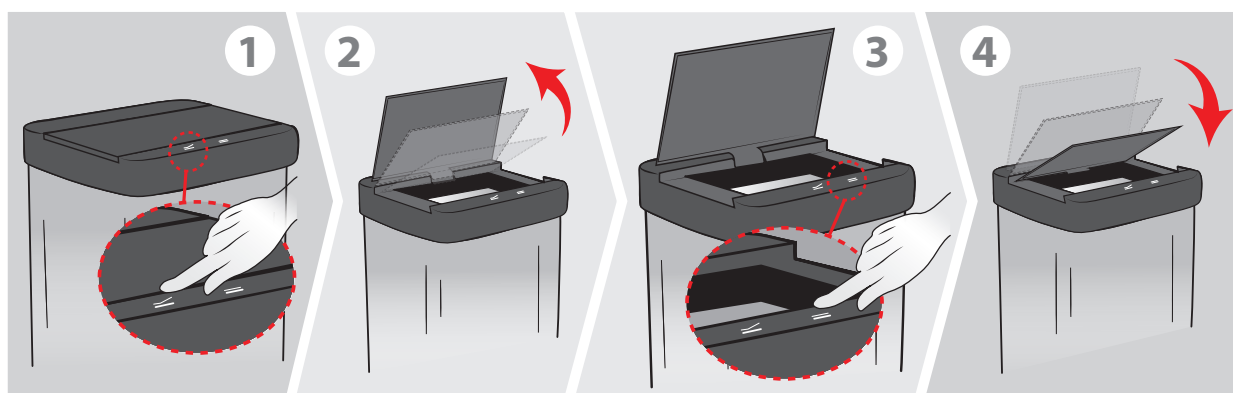
www.itouchless.com/retainer_ring_video



BATTERY POWER



OPERATING SENSOR-ACTIVATED LID

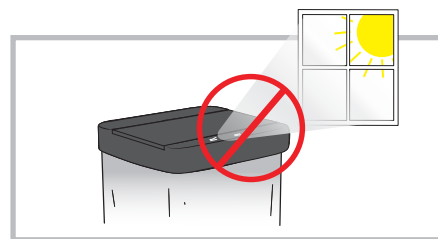
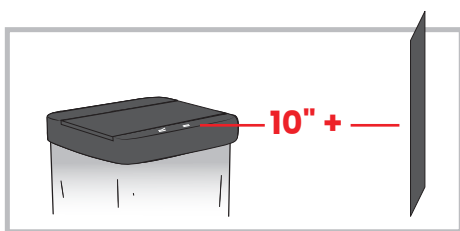


OPERATING LID MANUALLY

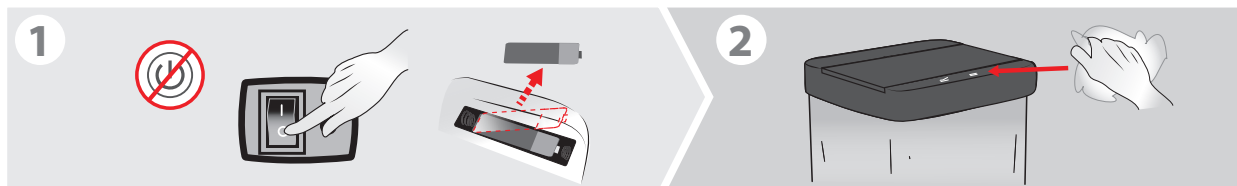
ATTENTION

1. This appliance is not intended for use by persons (including children) with reduced physical, sensory or mental capabilities, or lack of experience and knowledge, unless they have been given supervision or instruction concerning use of the appliance by a person responsible for their safety. Children should be supervised to ensure that they do not play with the appliance.
2. Non-rechargeable batteries are not to be recharged.
3. Different types of batteries or new and used batteries are not to be mixed.
4. Exhausted batteries are to be removed from the appliance and safely disposed of.
5. If the appliance is to be stored unused for a long period, the batteries should be removed.
6. The supply terminals are not to be short-circuited.
7. Do not submerge the lid in water as it houses the electronic control. You may clean it with a lightly dampened cloth.
8. Do not overstuff trash can bag. It may cause tearing or difficulty removing.
9. Automatic parts may not be suitable for small children or pets.

CARE & MAINTENANCE



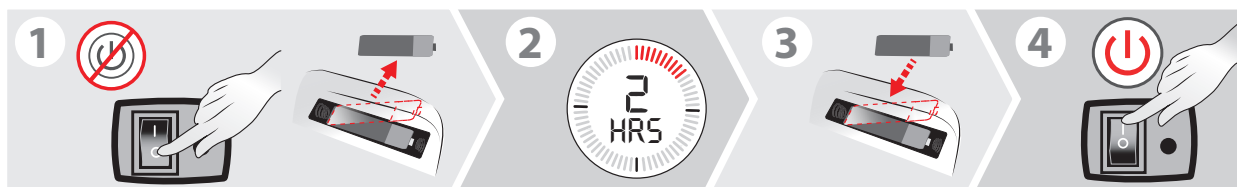
Maintain at least 10 inches between sensor and wall. Keep sensor out of direct sunshine.



Turn off power and remove batteries, then clean the sensor area with a soft, damp cloth and dry immediately.

TROUBLE-SHOOTING

For troubleshooting steps, visit www.itouchless.com



TO RESET: Turn off power and remove batteries. Let trash can sit for at least 2 hours, then replace batteries, power on, and attempt to operate lid.



Authorized Representative
AR Experts
P.O. Box 5047
3620 AA Breukelen
The Netherlands

UK Responsible Person
UKCA Experts Ltd.
Dept 302, 43 Owston Road
Carcroft, Doncaster, DN6 8DA
United Kingdom

One (1) Year Limited Warranty

iTouchless® Products are distributed by iTouchless Housewares & Products, Inc. (iTouchless) with the highest quality components and most advanced technologies available. This iTouchless product is warranted to be free from defects in material and workmanship, given normal use and care, for 365 days from the date of the original purchase with proof of purchase within the United States. iTouchless will only honor warranty requests from orders placed with our authorized dealers. Items sold as used, floor sample or refinished are sold solely under the terms and conditions of the selling party; the Manufacturer will not warrant such purchase. iTouchless will repair or replace a working condition unit thereof which fails as the result of such a defect during the warranty period; an administrative service fee will apply to warranty service. For administrative fee, warranty process, warranty exclusions, and other details, visit www.itouchless.com/SP13-warranty.

© 2023 All Rights Reserved. iTouchless Housewares & Products, Inc. | San Mateo, California, 94404 U.S.A.